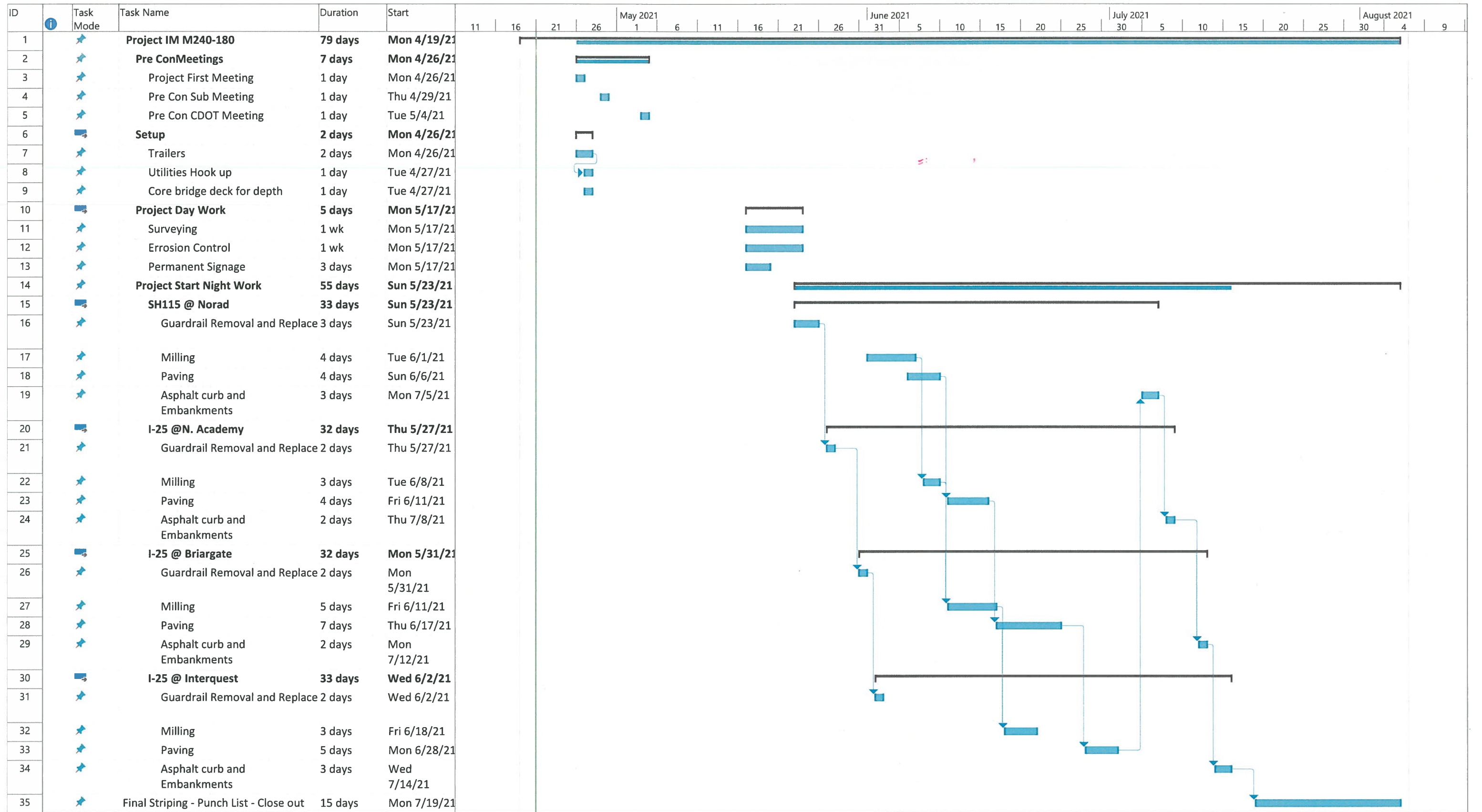


TU218
 PLAT 13997
 CS
 TEMPORARY USE FOR
 CONSTRUCTION EQUIPMENT
 STORAGE AND FIELD
 OFFICES FROM 4/29/21 -
 8/29/21

Approved
 By: Petra Rangel
 Date: 05/03/2021
 El Paso County Planning & Community Development





Project: CDOT Schedule 2.0 Date: Wed 4/21/21	Task		Project Summary		Manual Task		Start-only		Deadline	
	Split		Inactive Task		Duration-only		Finish-only		Progress	
	Milestone		Inactive Milestone		Manual Summary Rollup		External Tasks		Manual Progress	
	Summary		Inactive Summary		Manual Summary		External Milestone			



April 29, 2021

TO:

EPCD Plan Review

ATTN:

249 GLENEAGLE GATE VW

Zone: CS Plat: 13997

Parcel ID: 6206306003

Legal Description: TR C ACADEMY GATEWAY SUB FIL NO 1 IMP
ONLY

PROJECT:

I-25 Ramps in COS Resurfacing-IM M240-180 PCN- 23540

MESSAGE:

I am writing to you regarding the I-25 Ramps in COS Resurfacing-IM M240-180 PCN- 23540 Project starting Mid to late May, depending on temperatures and conditions. This is a 60 working day project.

Schmidt is temporarily leasing the above land from Academy Gateway II LLC for a 90 to a 120-day duration and expects to be off the property by mid-August.

At the time the lease comes to term, Schmidt will have all equipment, temporary buildings and materials removed from the site and returned to previous condition.

Thank you for your time in this matter.

FROM:

Jim Stewart

Schmidt Construction - PM