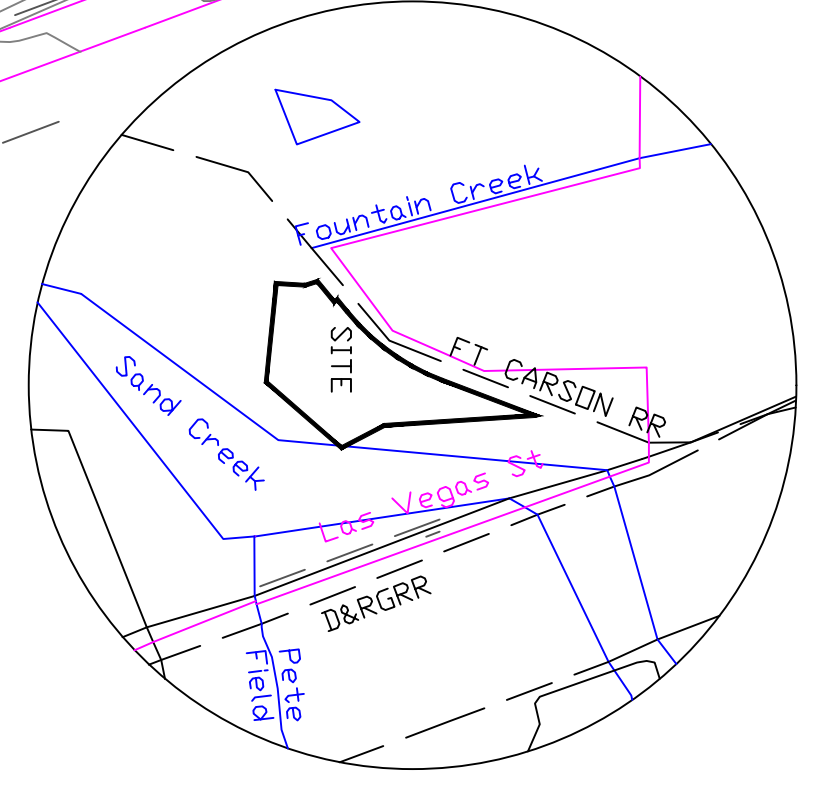


Scale 1" = 100'
 Contour Interval: 2'
 Contour Interval: 1' on top

BENCH MARK:
 FIMS MONUMENT # 220, NE COR LAS VEGAS ST. &
 WABASH STREET, 3-1/4" BRASS CAP, EL. 5816.116
 NGVD, 1929 ADJUSTMENT

LEGEND

- ⊗ FOUND 3-1/4" AL CAP #9853 CONTROL POINT
- ▣ FOUND YELLOW #17496 CAP DN #4 REBAR
- ▣ FOUND RED #19625 CAP DN #5 REBAR
- ◇ FOUND YELLOW #3854 CAP DN #4 REBAR
- FOUND 3-1/4" BC CITY FIMS BENCH MARK
- ◇ FOUND #4 REBAR
- 5802 — LIMIT OF 100-YEAR FLOOD PLAIN AND FLOOD ELEVATION
- ▨ AREA OF ACTIVE AND RECENT EROSION



Prepared by the office of:
 Oliver E. Watts, Consulting Engineer, Inc.
 614 Elkton Drive
 Colorado Springs, CO 80907
 719-593-0173
 olliewatts@aol.com
 Celebrating over 36 years in business

DRAWN BY: O.E. WATTS DATE: 12-27-01 DWG. NO.: 99-2916-07 B TOPOGRAPHY BY: CITY FIMS, 1986 SURVEYED BY: DEW, ESW, 12-27-01 THRU 8-18-15	APPROVED BY: PROJ. NO.: DWG.:	REVISIONS 1-2-14 AS-BUILT TOPOGRAPHY DEW 10-13-23 NO-BUILD AREA DEW 5-21-09 SHOW AREAS OF ACTIVE EROSION DEW	OLIVER E. WATTS CONSULTING ENGINEER COLORADO SPRINGS	PROJECT MARTIN PROPERTY PART SE1/4 SEC. 33, T.14S., R.66W. 6TH P.M. EL PASO COUNTY	SHEET NO. <h1 style="color: red; margin: 0;">GRADING PLAN</h1> 1 OF 2
--	-------------------------------------	--	--	---	--