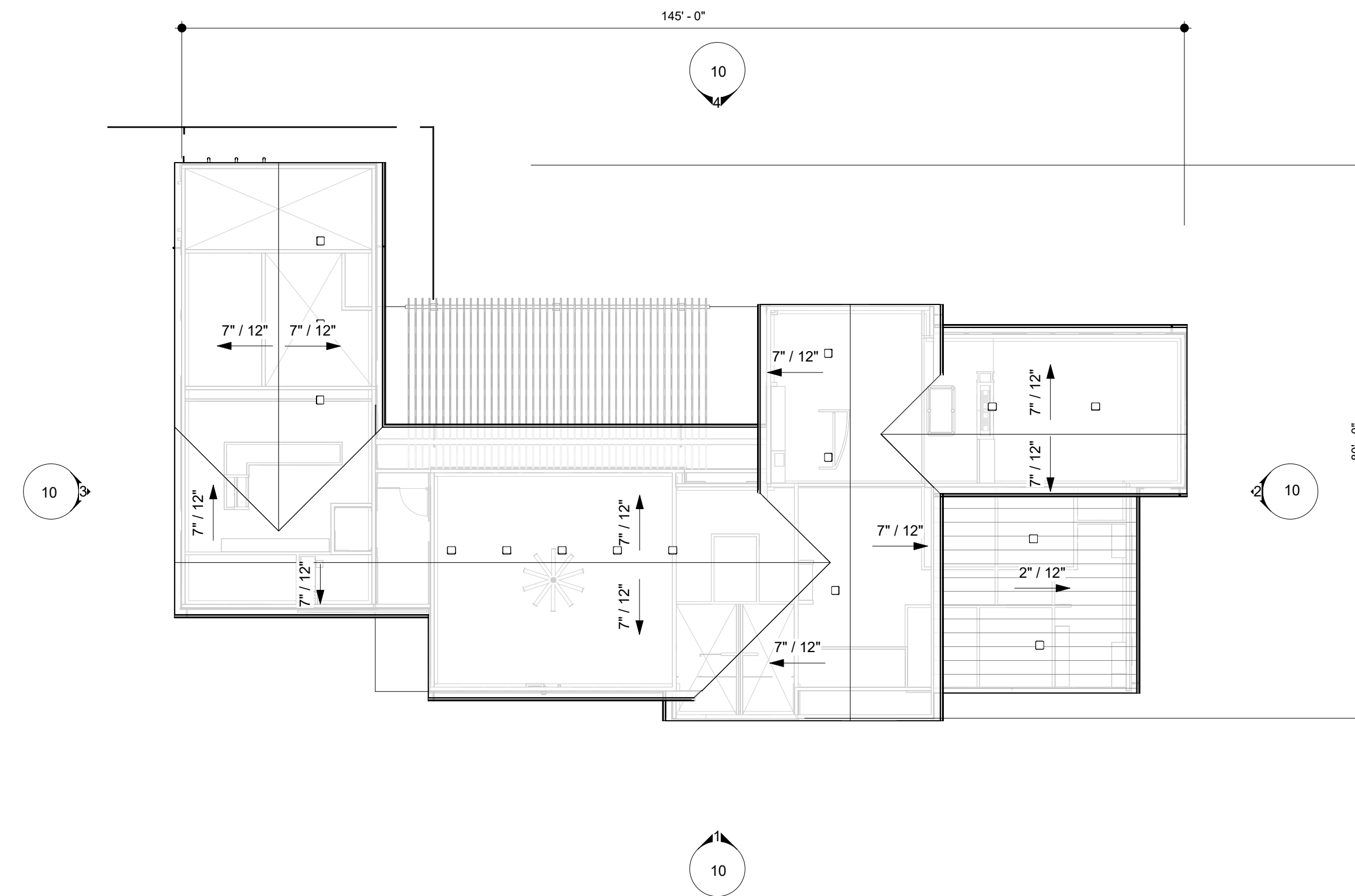


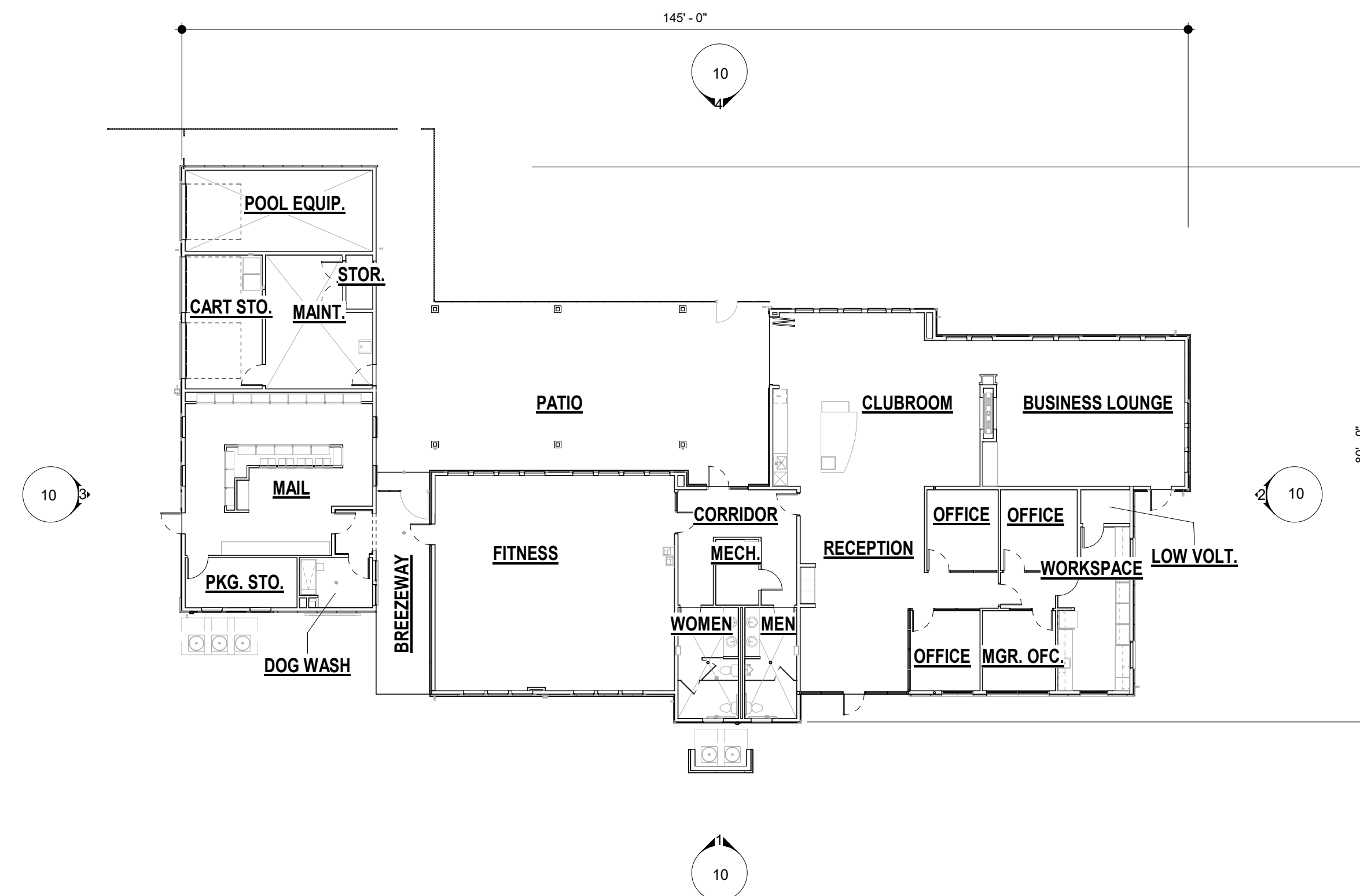
# OUTLOOK POWERS & GRINNELL

## EL PASO COUNTY, COLORADO

### SITE DEVELOPMENT PLAN

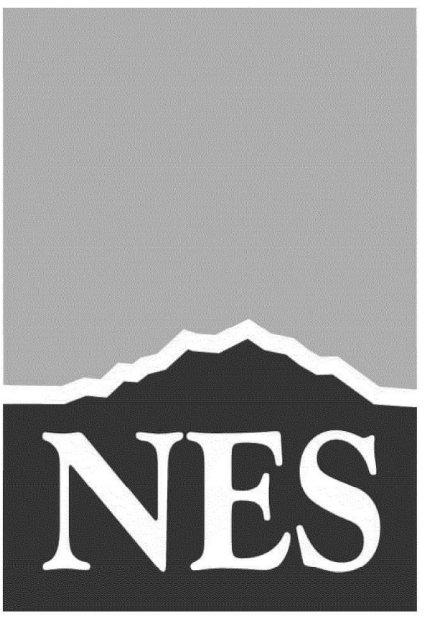


**2** ROOF COMPOSITE PLAN  
1/16" = 1'-0"



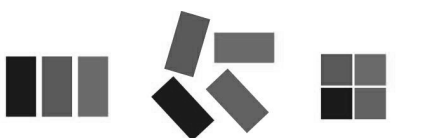
**1** CLUBHOUSE FLOOR PLAN  
1/16" = 1'-0"

P:\Evergreen Drawings and Grinnell\Drawings\Planning\Outlook Powers Grinnell\_SDP\_TITLEBLOCK.dwg [COUNTY\_COVER] 3/29/2021 2:10:39 PM Bowman



N.E.S. Inc.  
619 N. Cascade Avenue, Suite 200  
Colorado Springs, CO 80903  
Tel. 719.471.0073  
Fax 719.471.0267  
www.nescolorado.com  
© 2012. All Rights Reserved.

PLANNER / LANDSCAPE ARCHITECT



**KEPHART**  
community ■ planning ■ architecture

IN ASSOCIATION WITH

### OUTLOOK POWERS & GRINNELL

SITE DEVELOPMENT  
PLAN  
EL PASO COUNTY, COLORADO

PROJECT INFO DATE: 05/08/2023  
PROJECT MGR: JS  
PREPARED BY: AA

STAMP

### ENTITLEMENT

ISSUE INFO

ISSUE	BY	DESCRIPTION

ISSUE / REVISION

SHEET TITLE

FLOOR PLAN -  
CLUBHOUSE

SHEET NUMBER

# 11

11 26

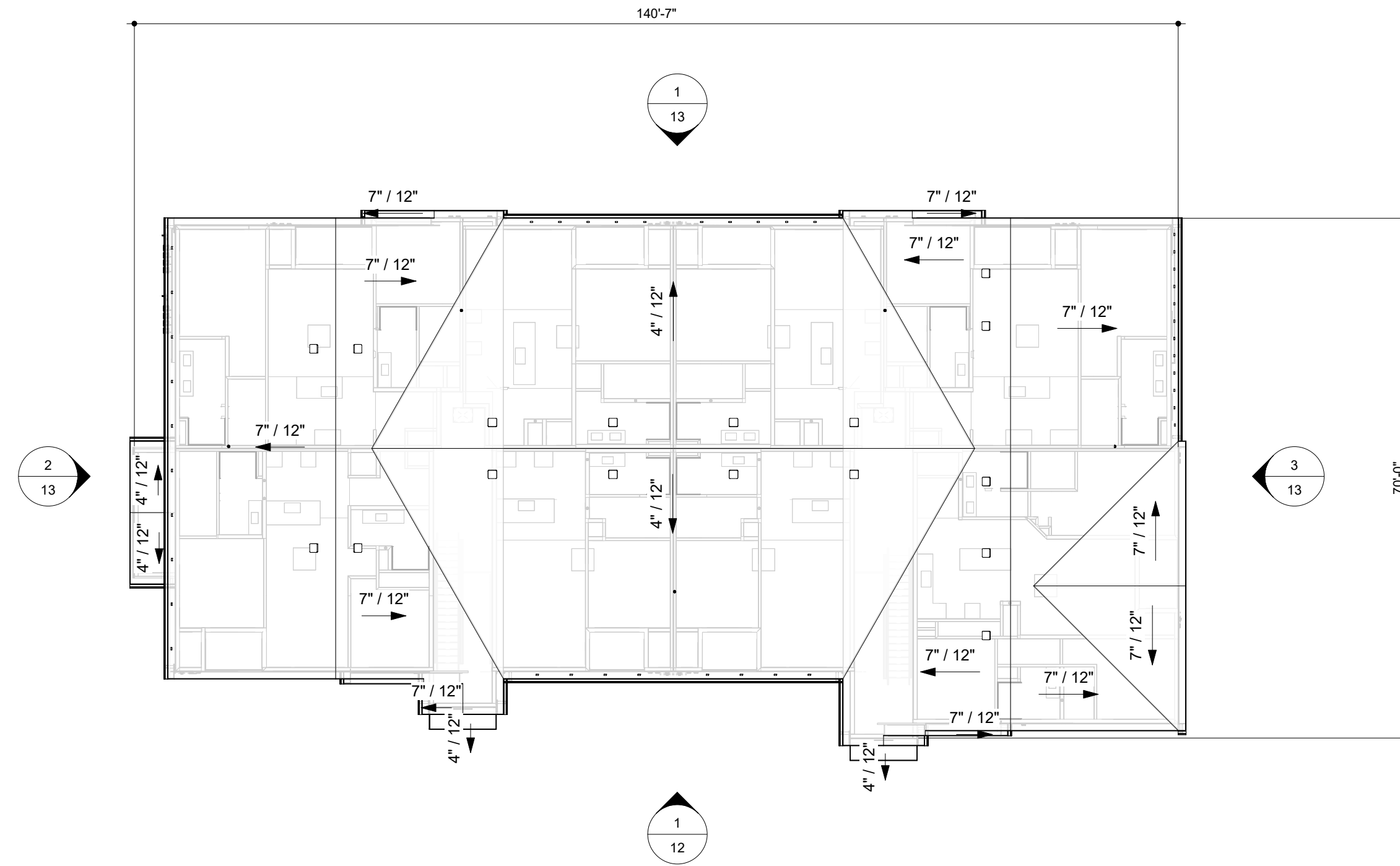
PLAN FILE #

221206

# OUTLOOK POWERS & GRINNELL

## EL PASO COUNTY, COLORADO

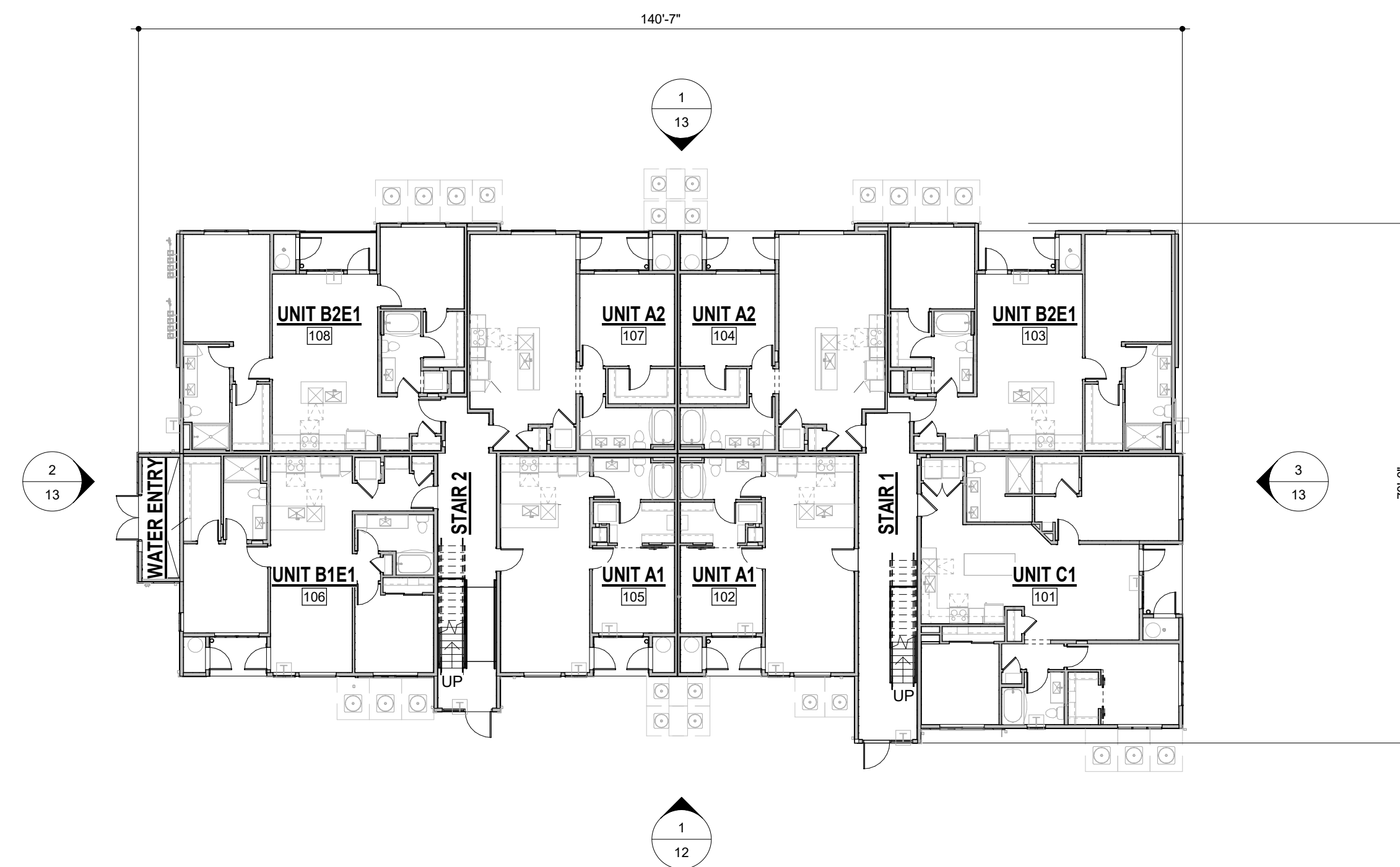
### SITE DEVELOPMENT PLAN



**3** ROOF COMPOSITE PLAN - 24 PLEX  
1/16" = 1'-0"



**2** 2ND/3RD TYPICAL FLOOR COMPOSITE PLAN - 24 PLEX  
1/16" = 1'-0"



**1** 1ST FLOOR COMPOSITE PLAN - 24 PLEX  
1/16" = 1'-0"



N.E.S. Inc.  
619 N. Cascade Avenue, Suite 200  
Colorado Springs, CO 80903  
Tel. 719.471.0073  
Fax 719.471.0267  
www.nescolorado.com  
© 2012. All Rights Reserved.



IN ASSOCIATION WITH

### OUTLOOK POWERS & GRINNELL

SITE DEVELOPMENT  
PLAN  
EL PASO COUNTY, COLORADO

PROJECT INFO  
DATE: 05/08/2023  
PROJECT MGR: JS  
PREPARED BY: AA

STAMP

### ENTITLEMENT

ISSUE INFO

ISSUE	BY	DESCRIPTION

SHEET TITLE

COMPOSITE PLANS  
- 24 PLEX

SHEET NUMBER

**14**

14 26

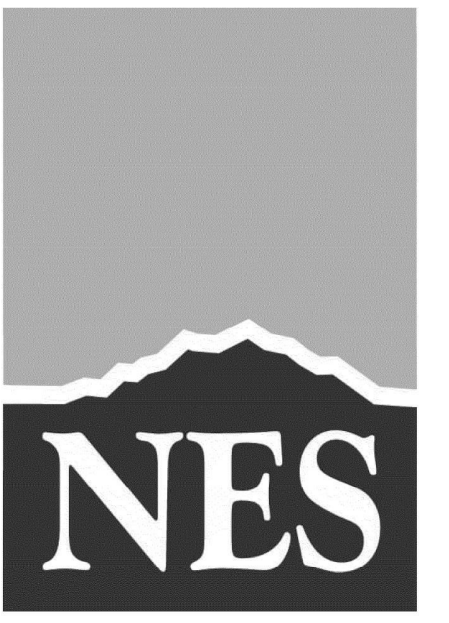
PLAN FILE #

221206

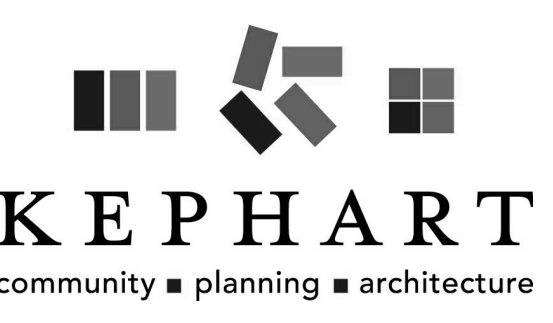
# OUTLOOK POWERS & GRINNELL

## EL PASO COUNTY, COLORADO

### SITE DEVELOPMENT PLAN



N.E.S. Inc.  
 619 N. Cascade Avenue, Suite 200  
 Colorado Springs, CO 80903  
 Tel. 719.471.0073  
 Fax 719.471.0267  
 www.nescolorado.com  
 © 2012. All Rights Reserved.

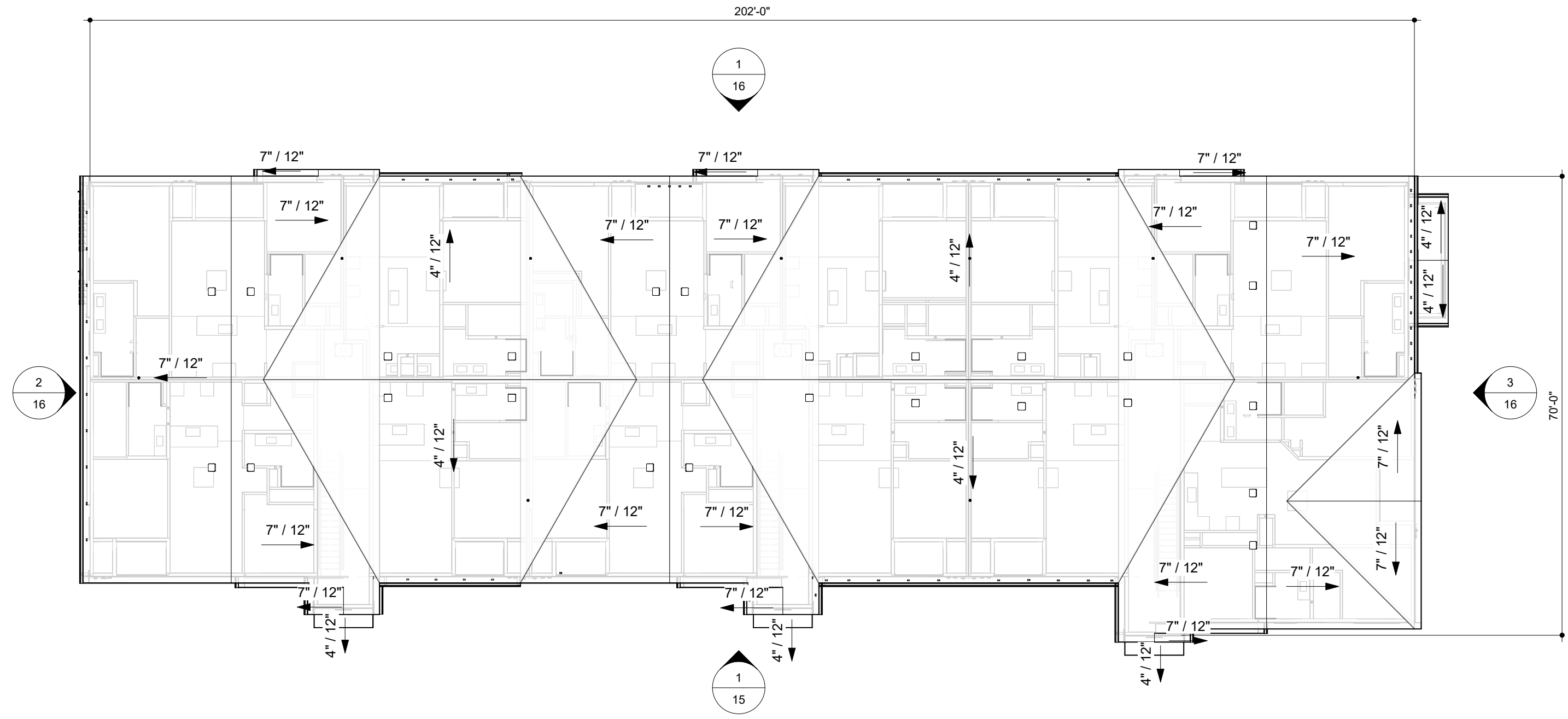


IN ASSOCIATION WITH

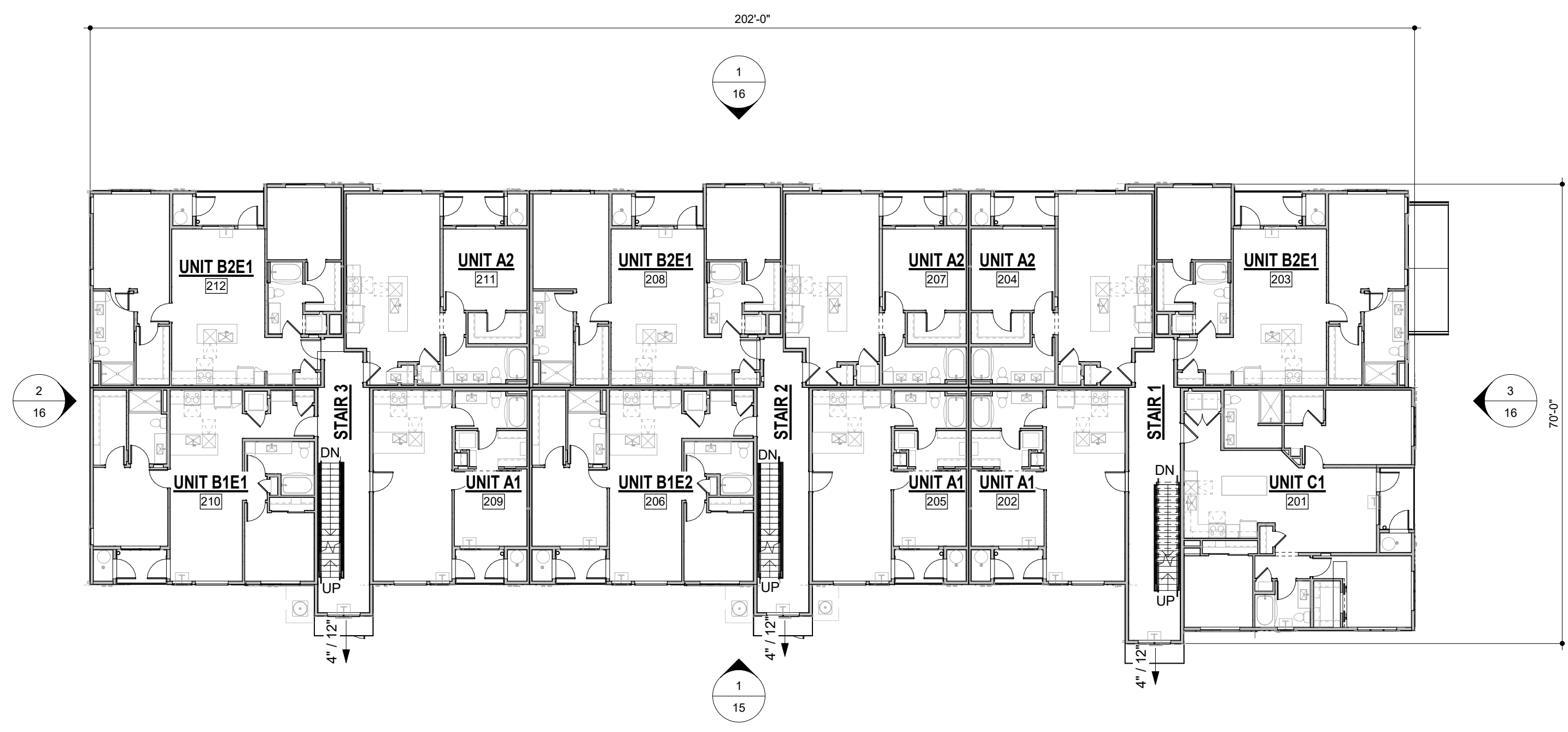
### OUTLOOK POWERS & GRINNELL

SITE DEVELOPMENT PLAN  
 EL PASO COUNTY, COLORADO

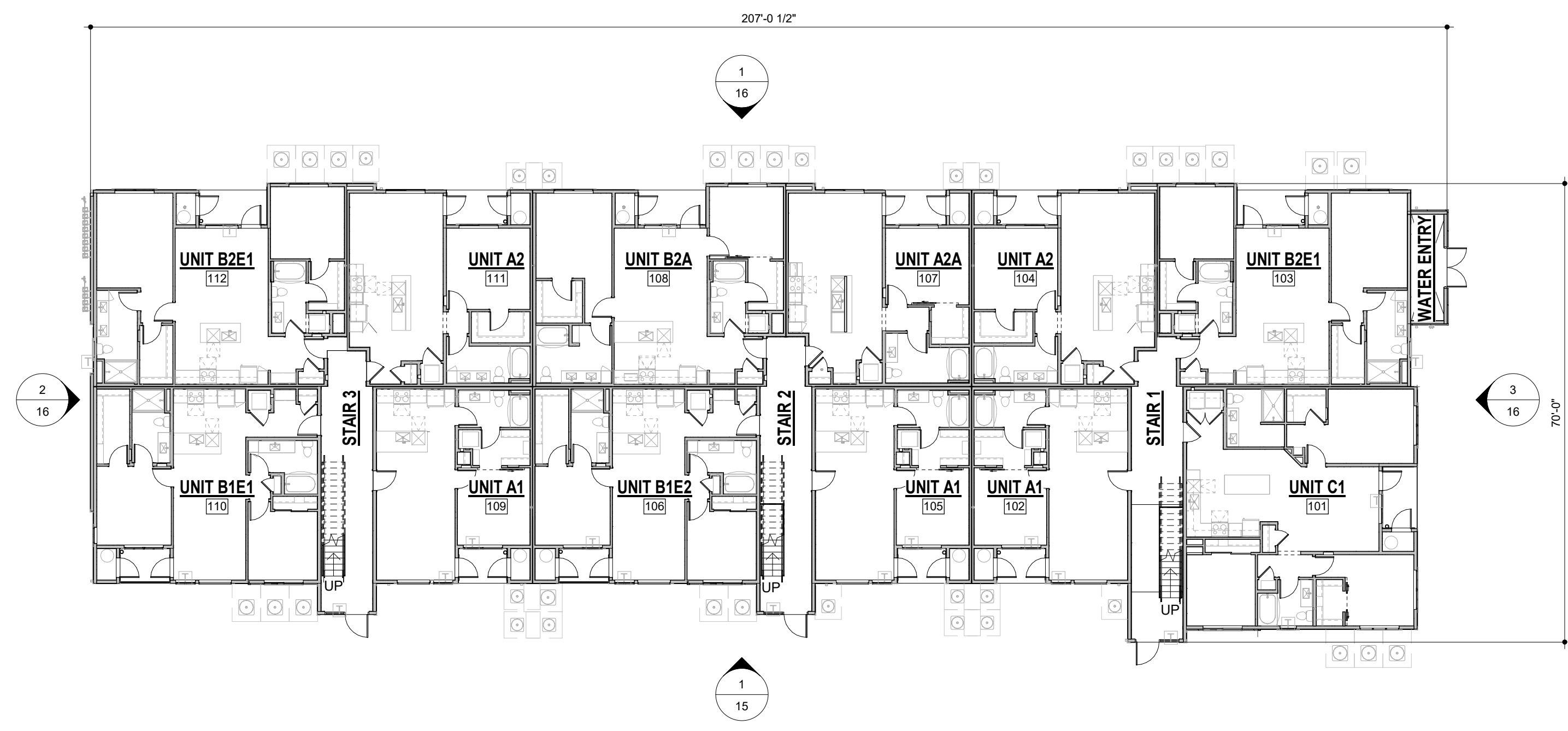
PROJECT INFO  
 DATE: 05/08/2023  
 PROJECT MGR: JS  
 PREPARED BY: AA



**3** ROOF COMPOSITE PLAN - 36 PLEX  
 1/16" = 1'-0"



**2** 2ND/3RD TYPICAL FLOOR COMPOSITE PLAN - 36 PLEX  
 1/16" = 1'-0"



**1** 1ST FLOOR COMPOSITE PLAN - 36 PLEX  
 1/16" = 1'-0"

P:\Energy\Drawings\OutlookPowers and Grinnell\Drawings\OutlookPowers and Grinnell\SDP\_TITLEBLOCK.dwg [COUNTY COVER] 3/29/2023 2:10:39 PM Downson

STAMP

ENTITLEMENT

ISSUE INFO

ISSUE #	BY	DESCRIPTION

COMPOSITE PLANS - 36 PLEX

**17**

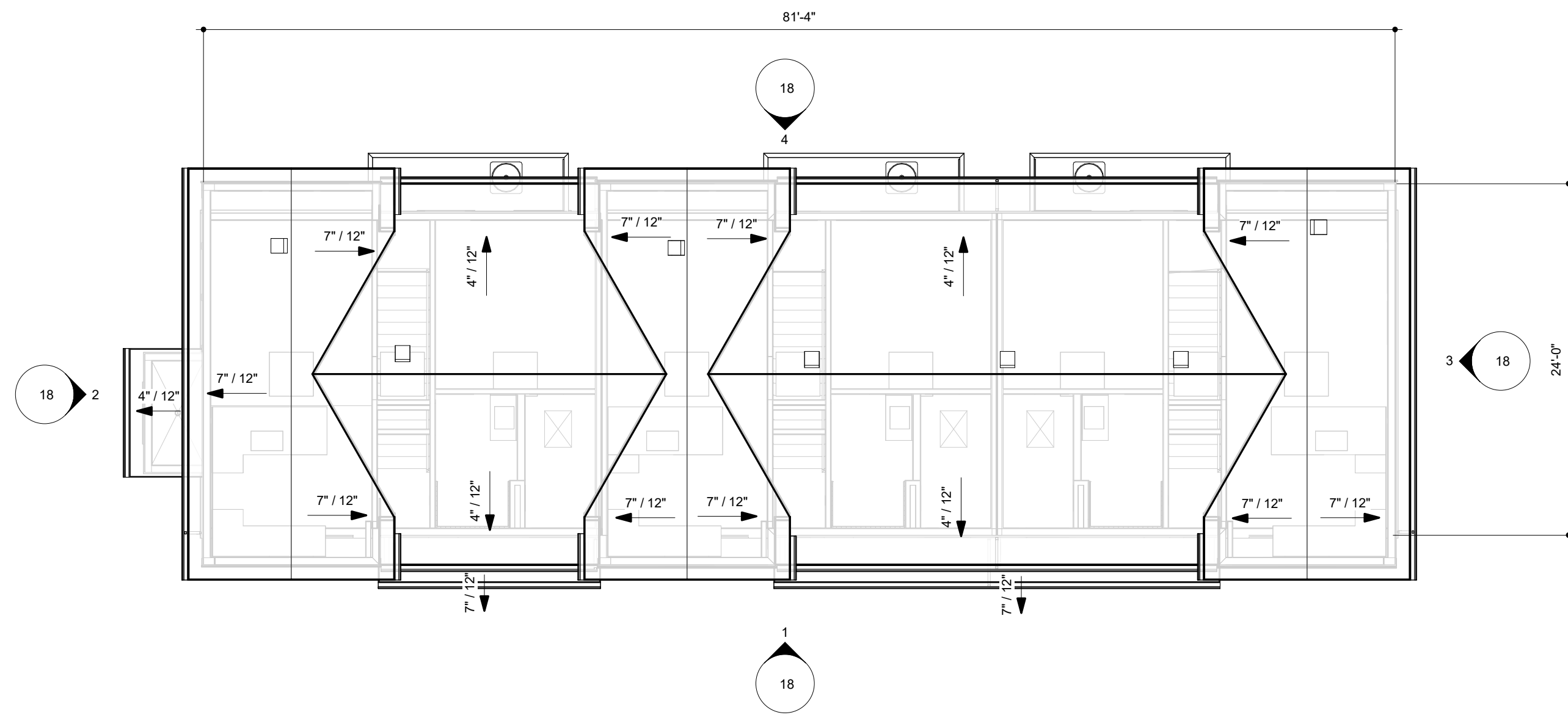
17 26

PLAN FILE # 221206

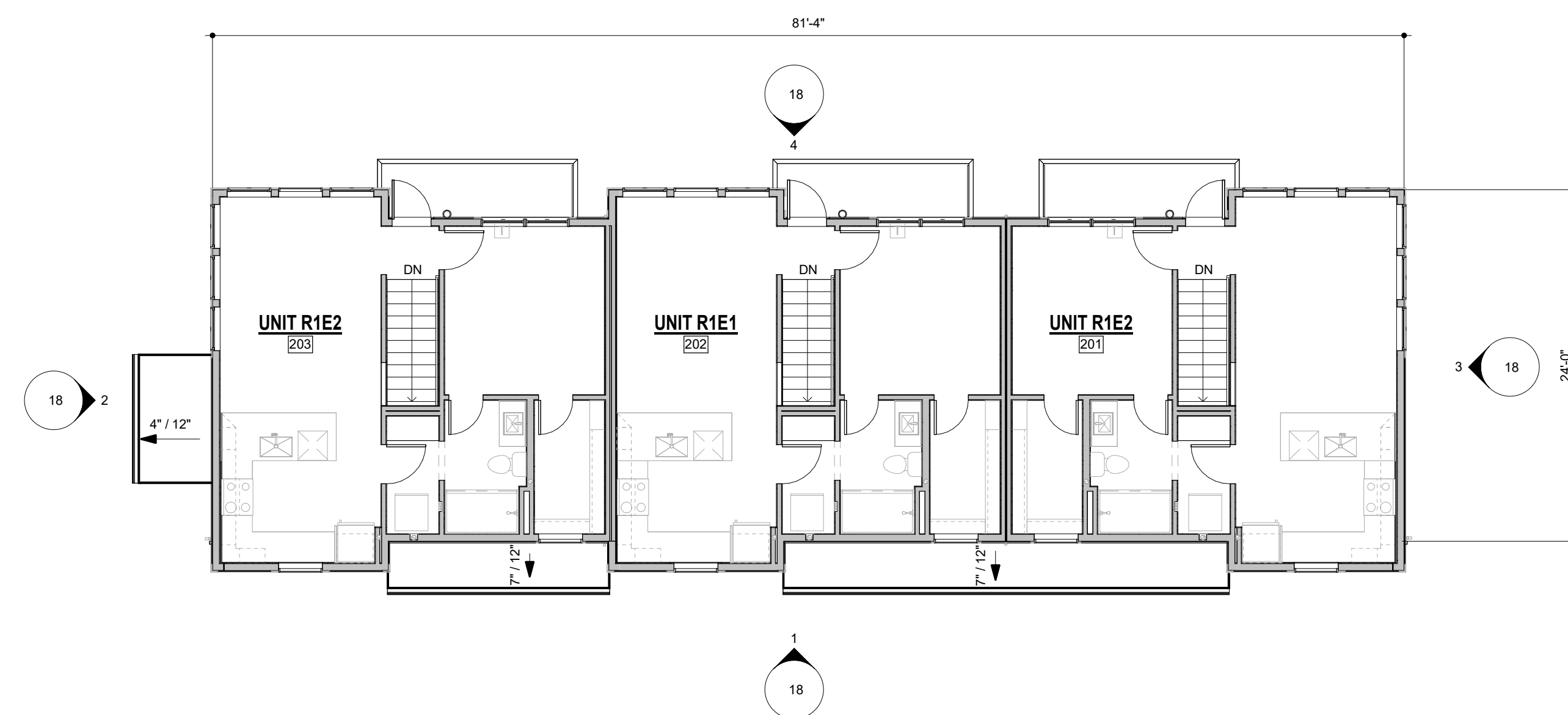
# OUTLOOK POWERS & GRINNELL

## EL PASO COUNTY, COLORADO

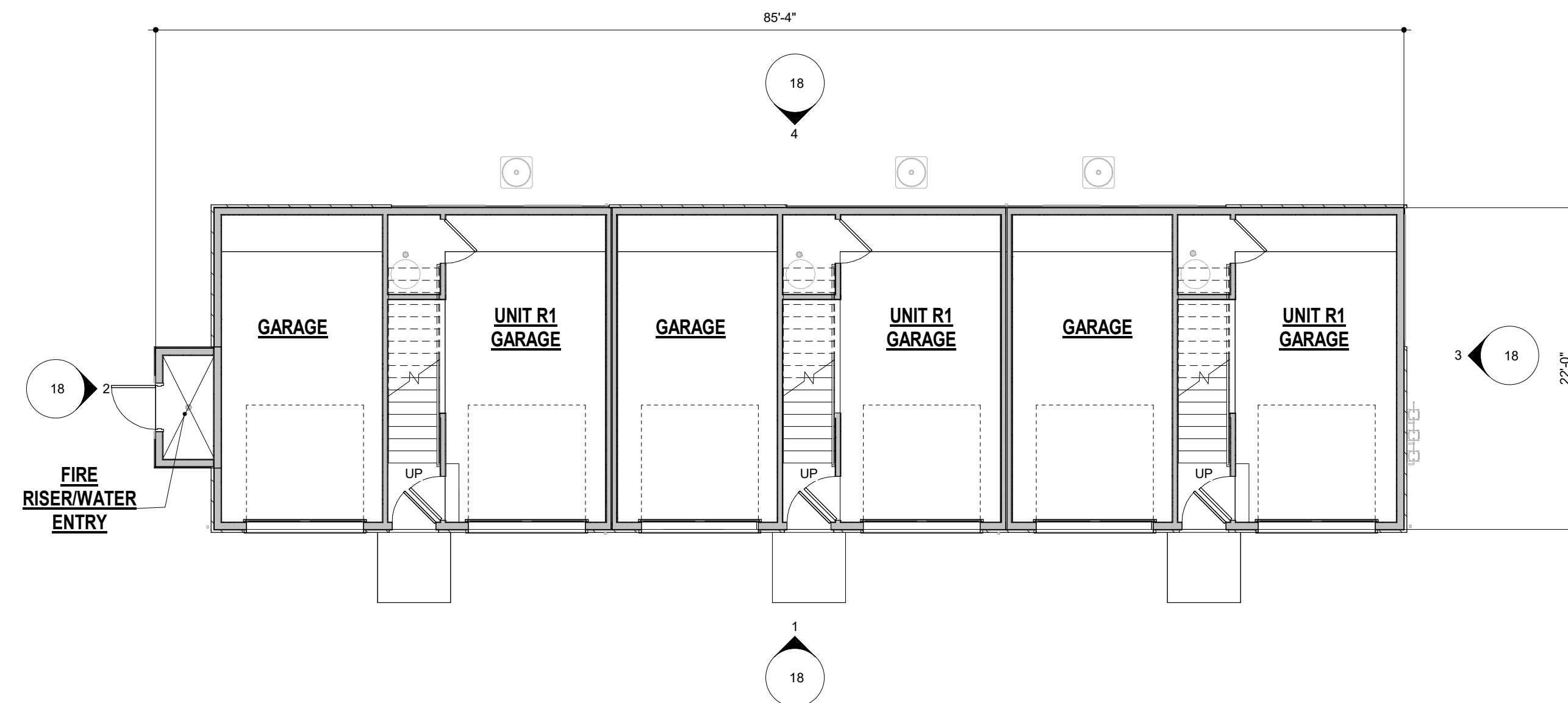
### SITE DEVELOPMENT PLAN



**3 ROOF COMPOSITE PLAN**  
1/8" = 1'-0"



**2 2ND FLOOR COMPOSITE PLAN**  
1/8" = 1'-0"

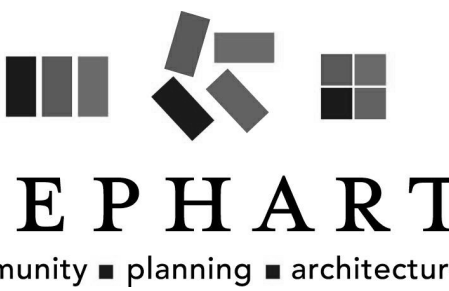


**1 1ST FLOOR COMPOSITE PLAN**  
1/8" = 1'-0"



N.E.S. Inc.  
619 N. Cascade Avenue, Suite 200  
Colorado Springs, CO 80903  
Tel. 719.471.0073  
Fax 719.471.0267  
www.nescolorado.com  
© 2012. All Rights Reserved.

PLANNER / LANDSCAPE ARCHITECT



IN ASSOCIATION WITH

### OUTLOOK POWERS & GRINNELL

SITE DEVELOPMENT PLAN  
EL PASO COUNTY, COLORADO

PROJECT INFO: DATE: 05/08/2023  
PROJECT MGR: JS  
PREPARED BY: AA

STAMP

### ENTITLEMENT

ISSUE INFO

ISSUE	BY	DESCRIPTION

ISSUE / REVISION

### COMPOSITE PLANS - CARRIAGES

SHEET TITLE

SHEET NUMBER

# 19

19 26

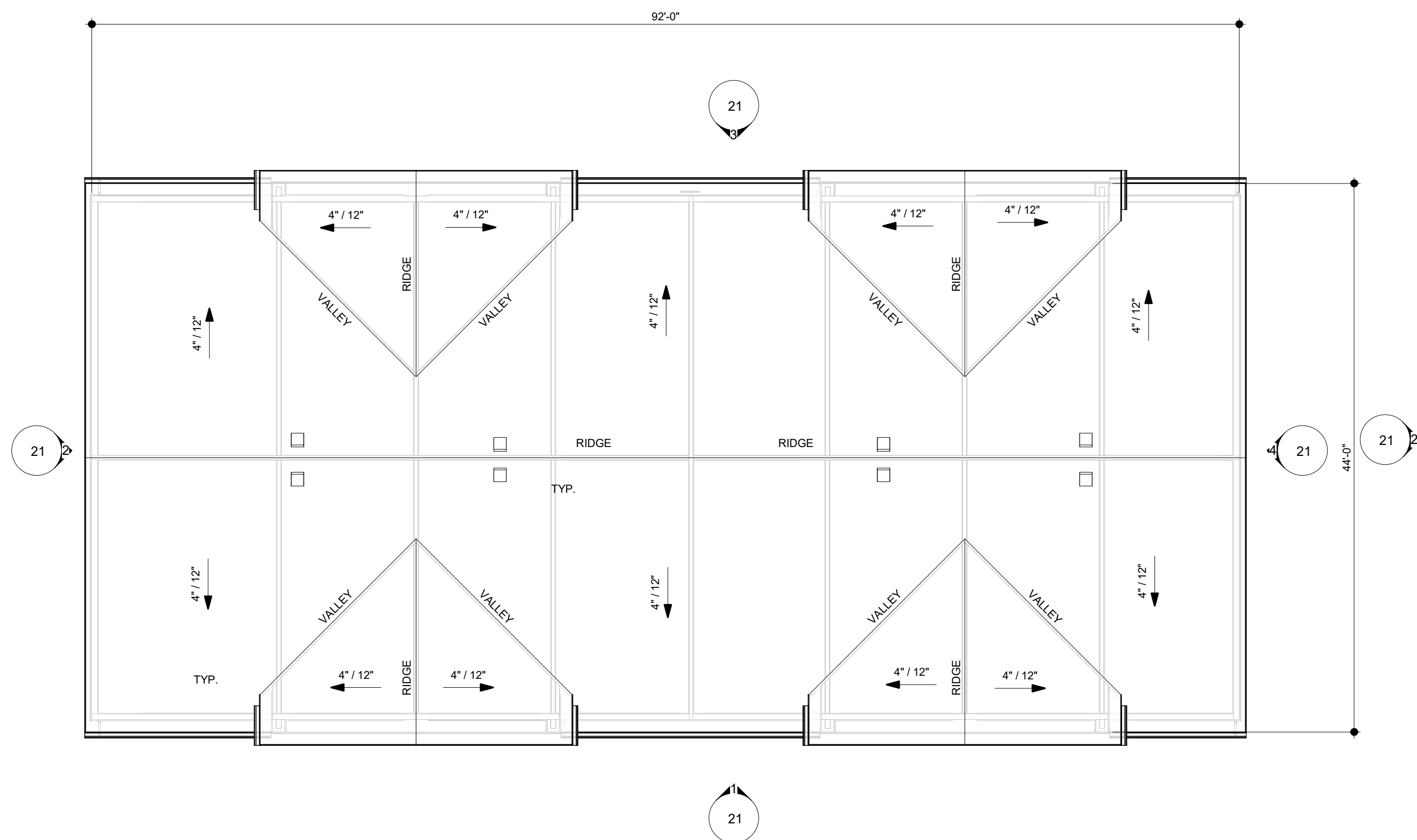
PLAN FILE #

221206

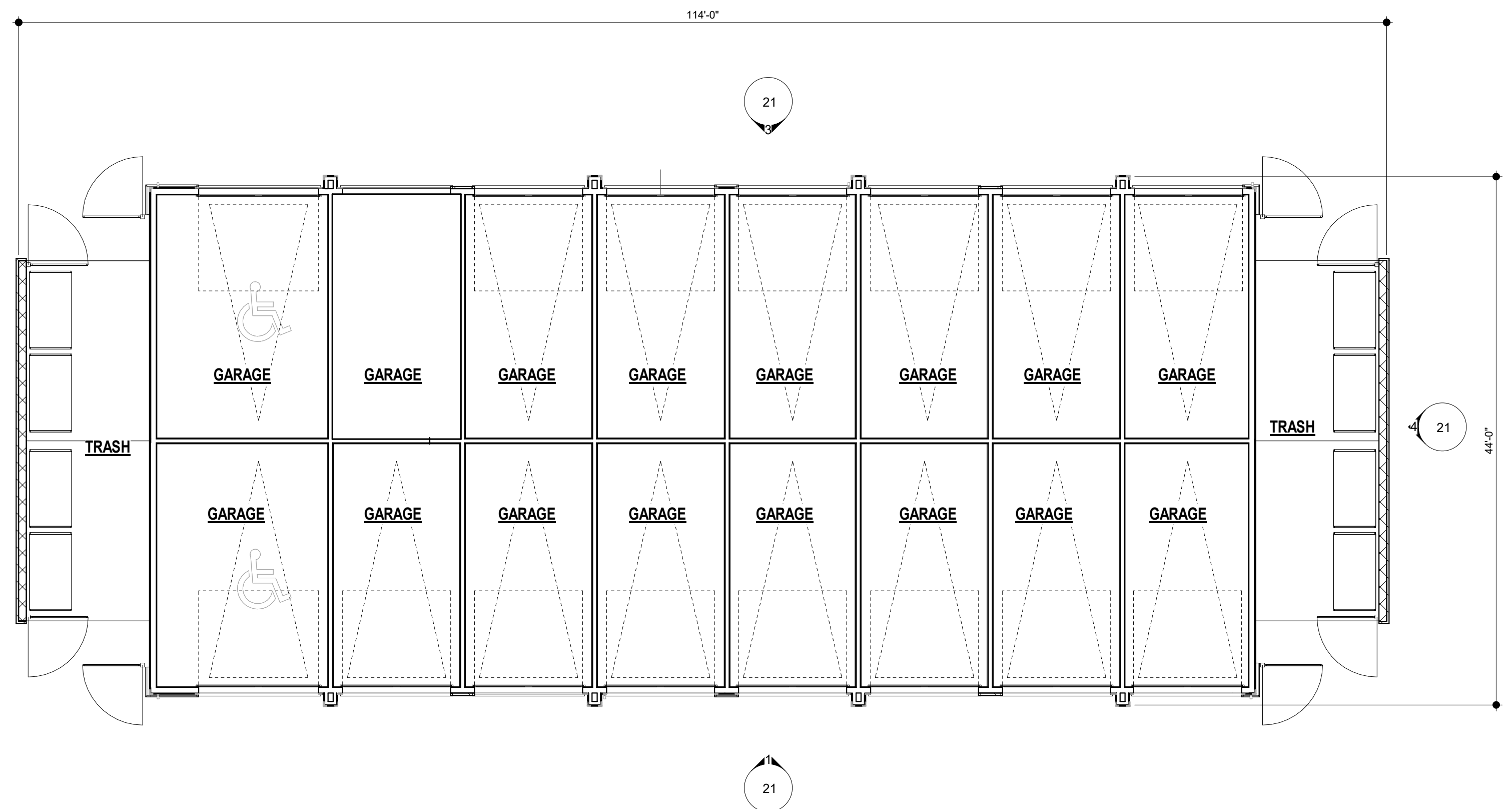
# OUTLOOK POWERS & GRINNELL

## EL PASO COUNTY, COLORADO

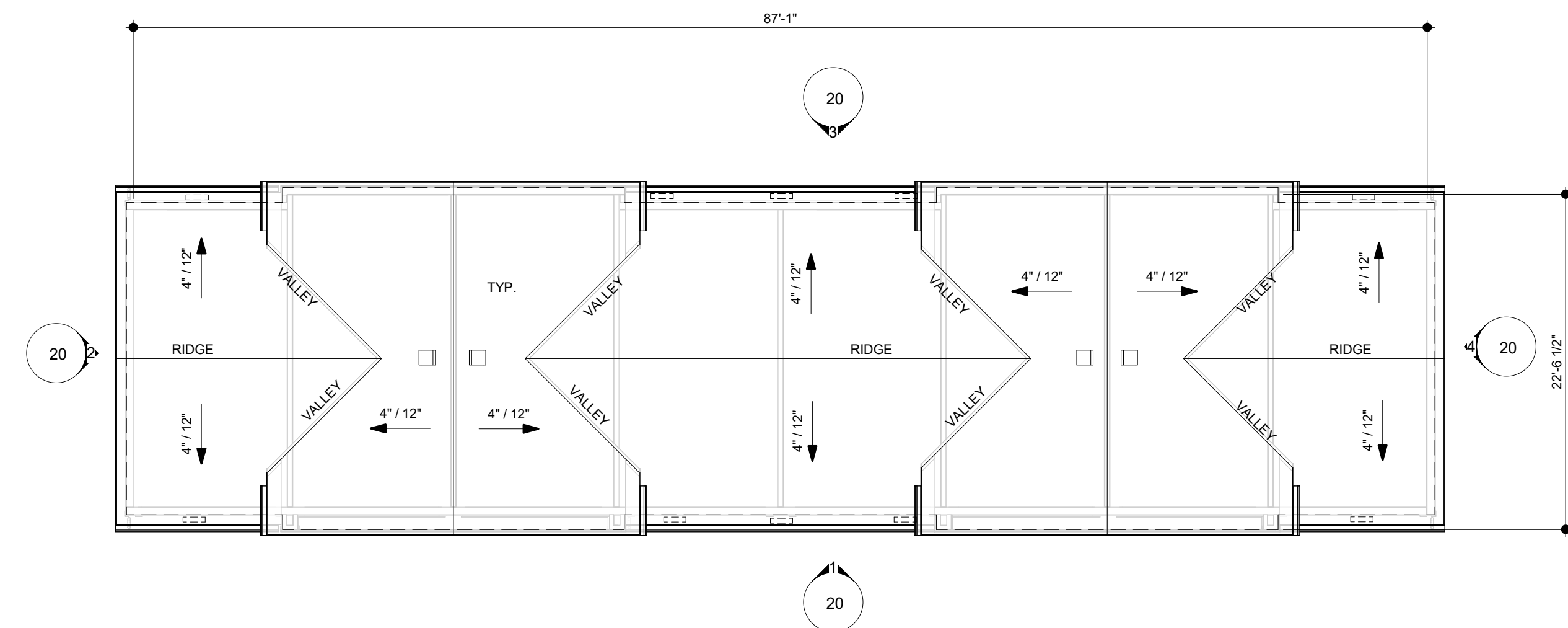
### SITE DEVELOPMENT PLAN



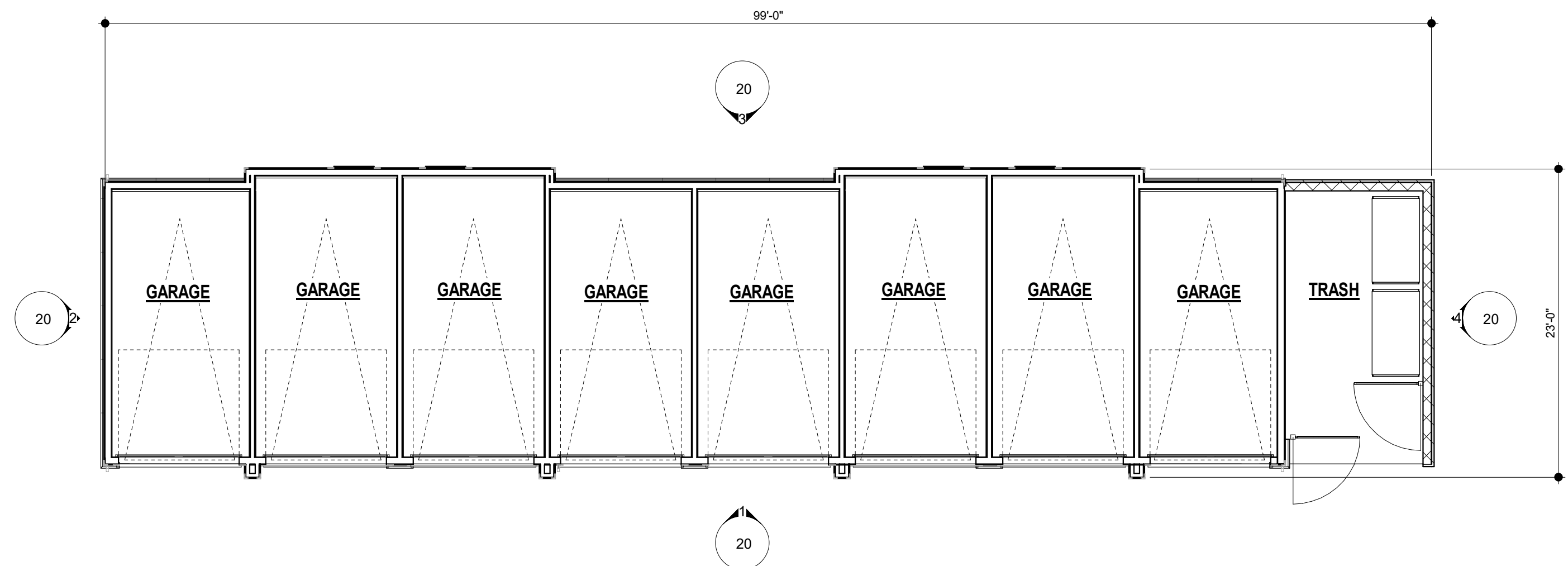
**4** ROOF PLAN - DOUBLE GARAGE  
1/8" = 1'-0"



**3** FLOOR PLAN - DOUBLE GARAGE  
1/8" = 1'-0"



**2** ROOF PLAN - SINGLE GARAGE  
1/8" = 1'-0"



**1** FLOOR PLAN - SINGLE GARAGE  
1/8" = 1'-0"



N.E.S. Inc.  
619 N. Cascade Avenue, Suite 200  
Colorado Springs, CO 80903  
Tel. 719.471.0073  
Fax 719.471.0267  
www.nescolorado.com  
© 2012. All Rights Reserved.



PLANNER / LANDSCAPE ARCHITECT  
IN ASSOCIATION WITH

### OUTLOOK POWERS & GRINNELL

SITE DEVELOPMENT  
PLAN  
EL PASO COUNTY, COLORADO

PROJECT INFO DATE: 05/08/2023  
PROJECT MGR: JS  
PREPARED BY: AA

STAMP

### ENTITLEMENT

ISSUE INFO

ISSUE	BY	DESCRIPTION

ISSUE / REVISION

### FLOOR PLANS - SINGLE GARAGE & DOUBLE GARAGE

SHEET TITLE

SHEET NUMBER

PLAN FILE #

# 22

22 26

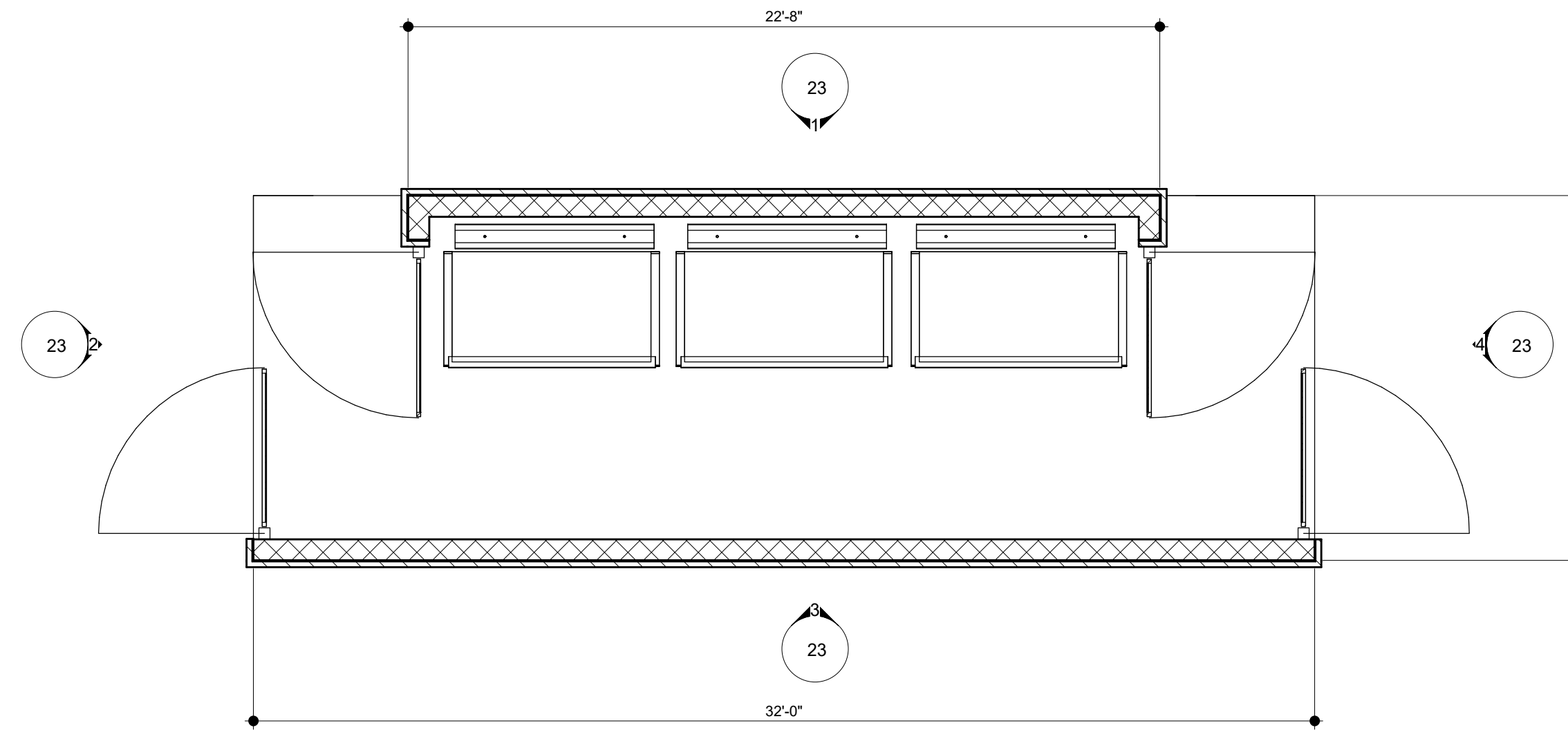
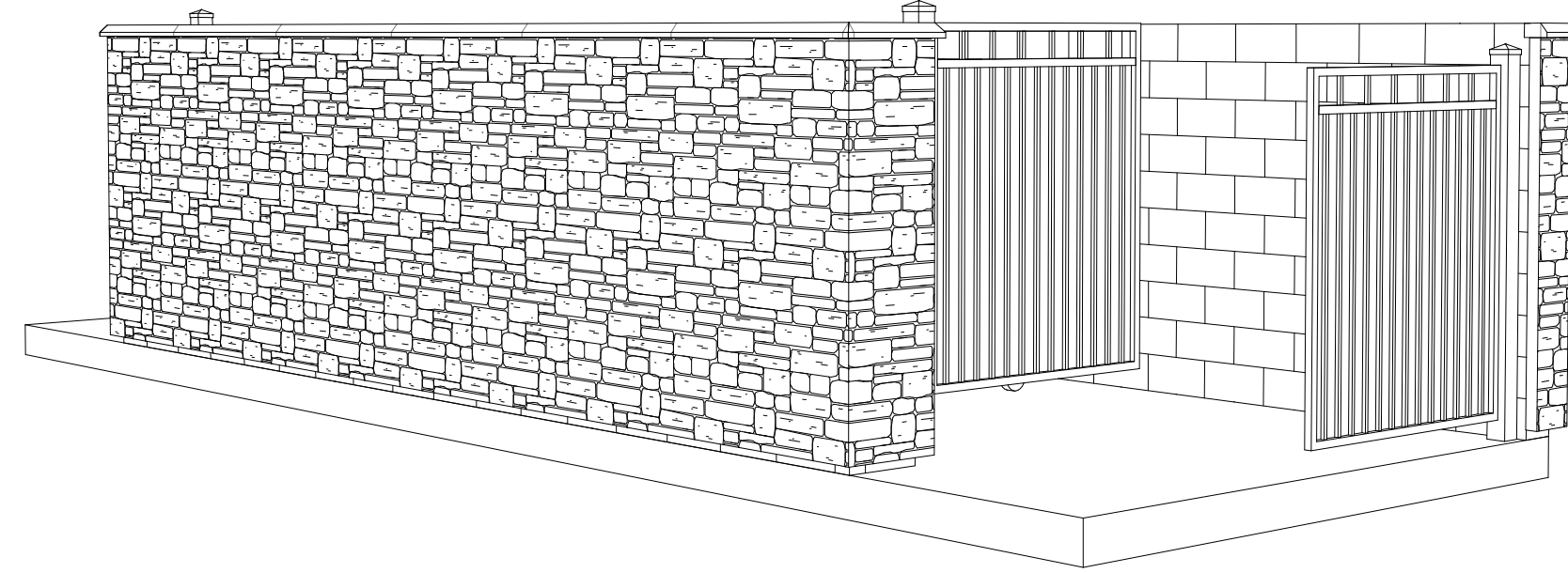
221206

# OUTLOOK POWERS & GRINNELL

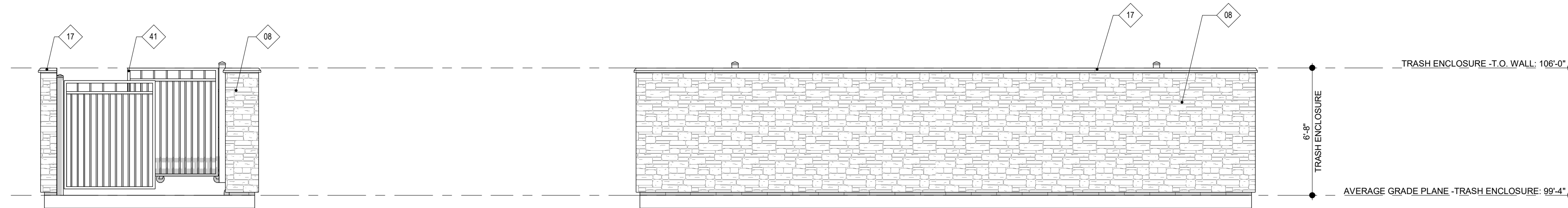
## EL PASO COUNTY, COLORADO

### SITE DEVELOPMENT PLAN

KEYNOTES	
#	DESCRIPTION
08	SYNTHETIC STONE VENEER SYSTEM
17	STONE SILLCAP
41	METAL TRASH ENCLOSURE GATE

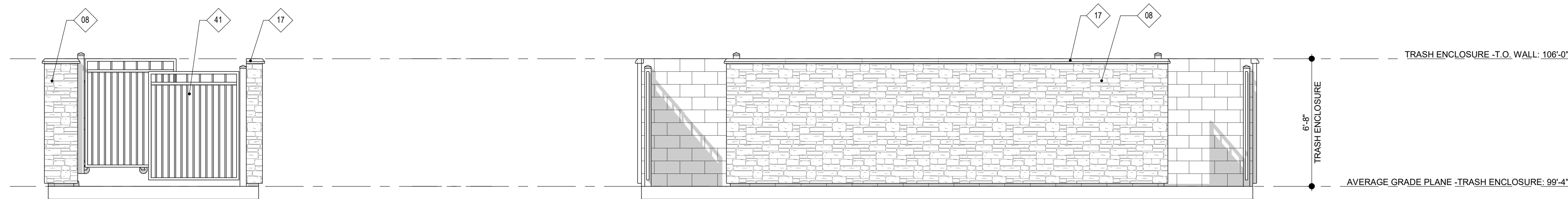


**5 FLOOR PLAN -TRASH ENCLOSURE**  
1/4" = 1'-0"



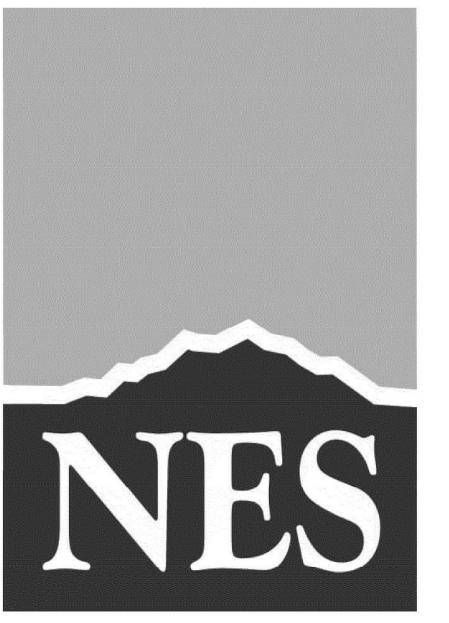
**4 RIGHT ELEVATION -TRASH ENCLOSURE**  
1/4" = 1'-0"

**3 REAR ELEVATION -TRASH ENCLOSURE**  
1/4" = 1'-0"

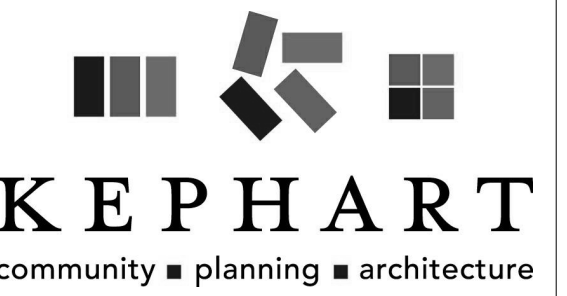


**2 LEFT ELEVATION -TRASH ENCLOSURE**  
1/4" = 1'-0"

**1 FRONT ELEVATION -TRASH ENCLOSURE**  
1/4" = 1'-0"



N.E.S. Inc.  
619 N. Cascade Avenue, Suite 200  
Colorado Springs, CO 80903  
Tel. 719.471.0073  
Fax 719.471.0267  
www.nescolorado.com  
© 2012. All Rights Reserved.



IN ASSOCIATION WITH

### OUTLOOK POWERS & GRINNELL

SITE DEVELOPMENT PLAN  
EL PASO COUNTY, COLORADO

PROJECT INFO  
DATE: 05/08/2023  
PROJECT MGR: JS  
PREPARED BY: AA

STAMP

### ENTITLEMENT

ISSUE INFO

ISSUE #	BY	DESCRIPTION

SHEET TITLE

ELEVATIONS AND FLOOR PLAN - TRASH ENCLOSURE

SHEET NUMBER

23

23 26

PLAN FILE #

221206