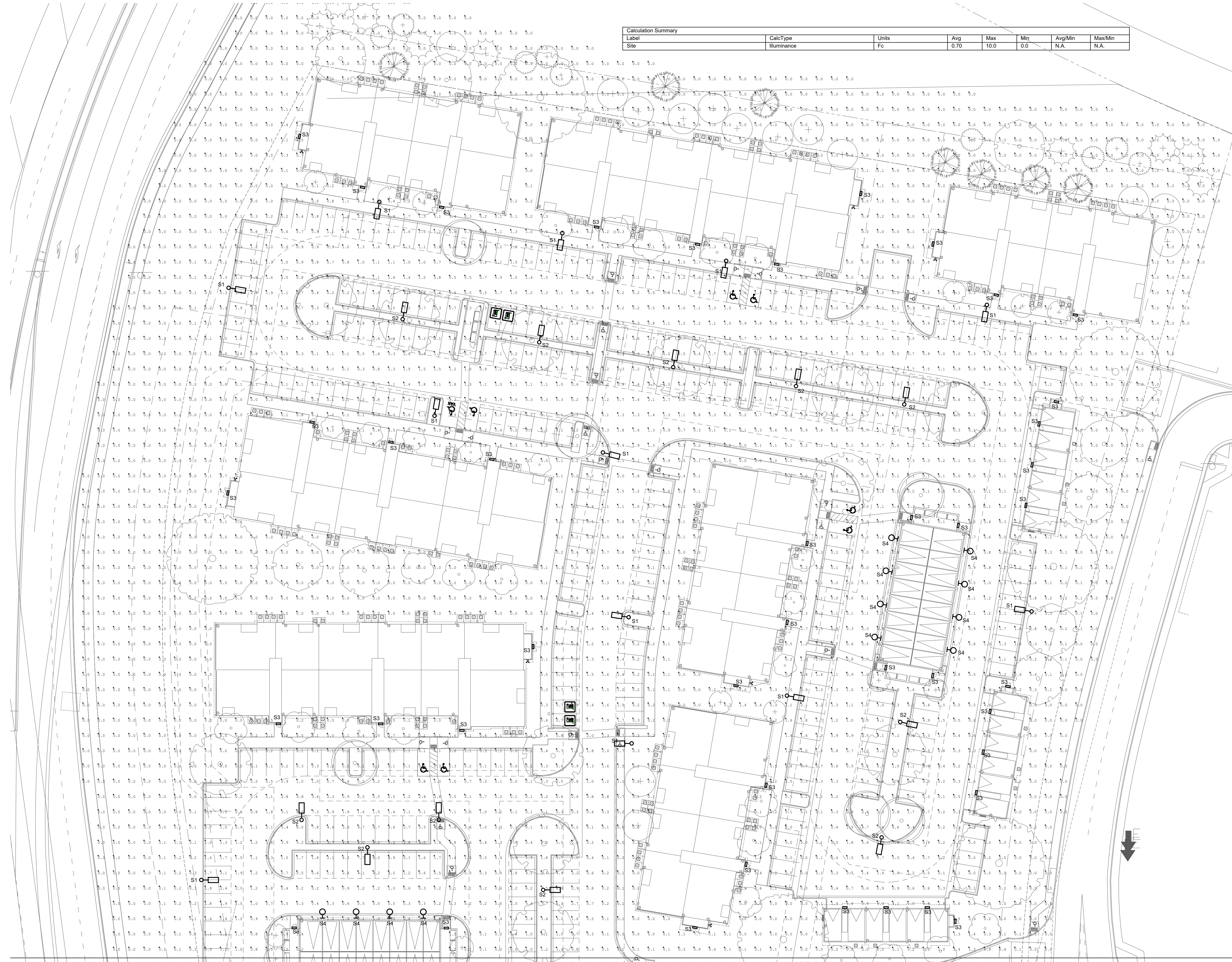


You need to provide a legend on each page of the Site development plan . That needs to include all of the symbology depicted in the images provided with this application .

OUTLOOK POWERS & GRINNELL

EL PASO COUNTY, COLORADO

SITE DEVELOPMENT PLAN



Label	CalcType	Units	Avg	Max	Min	Avg/Min	Max/Min
Site	Illuminance	Fc	0.70	10.0	0.0	N.A.	N.A.

1 SITE PHOTOMETRIC PLAN - 1
SCALE: 1/8" = 1'-0"



N.E.S. Inc.
619 N. Cascade Avenue, Suite 200
Colorado Springs, CO 80903
Tel. 719.471.0073
Fax 719.471.0267
www.nescolorado.com
© 2012. All Rights Reserved.



OUTLOOK POWERS & GRINNELL

SITE DEVELOPMENT PLAN
EL PASO COUNTY, COLORADO

DATE: 05/08/2023
PROJECT MGR: LL
PREPARED BY: MA

ENTITLEMENT

DATE:	BY:	DESCRIPTION:

SHEET TITLE

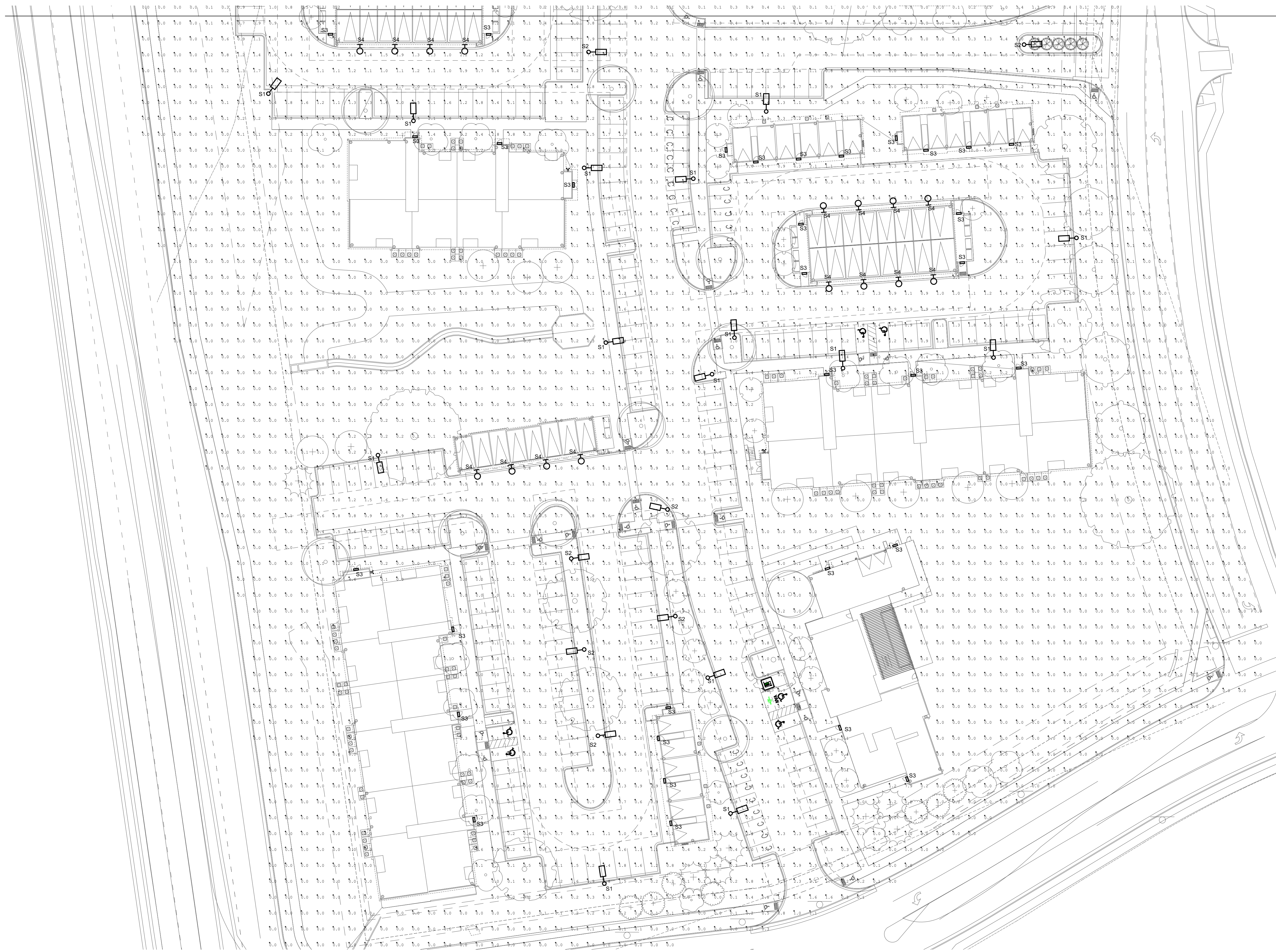
SITE PHOTOMETRICS

24
24 OF 26

221206

OUTLOOK POWERS & GRINNELL

EL PASO COUNTY, COLORADO
SITE DEVELOPMENT PLAN



1 SITE PHOTOMETRIC PLAN - 2
SCALE 1/8" = 1'-0"



N.E.S. Inc.
619 N. Cascade Avenue, Suite 200
Colorado Springs, CO 80903
Tel. 719.471.0073
Fax 719.471.0267
www.nescolorado.com
© 2012. All Rights Reserved.



OUTLOOK POWERS & GRINNELL

SITE DEVELOPMENT
PLAN
EL PASO COUNTY, COLORADO

DATE: 05/08/2023
PROJECT MGR: LL
PREPARED BY: MA

ENTITLEMENT

DATE:	BY:	DESCRIPTION:

SHEET TITLE SITE PHOTOMETRICS

25
25 OF 26

221206

PLANNER / LANDSCAPE ARCHITECT
 IN ASSOCIATION WITH
 STAMP
 ISSUE INFO
 SHEET NUMBER
 PLAN FILE #

OUTLOOK POWERS & GRINNELL

EL PASO COUNTY, COLORADO

SITE DEVELOPMENT PLAN



N.E.S. Inc.
619 N. Cascade Avenue, Suite 200
Colorado Springs, CO 80903

Tel. 719.471.0073
Fax 719.471.0267

www.nescolorado.com

© 2012. All Rights Reserved.



PLANNER / LANDSCAPE ARCHITECT
IN ASSOCIATION WITH

OUTLOOK POWERS & GRINNELL

SITE DEVELOPMENT PLAN
EL PASO COUNTY, COLORADO

PROJECT INFO

DATE: 05/08/2023
PROJECT MGR: LL
PREPARED BY: MA

STAMP

ENTITLEMENT

ISSUE INFO

DATE: BY: DESCRIPTION:

ISSUE / REVISION

SHEET TITLE

SHEET TITLE PHOTOMETRIC CUT SHEETS

SHEET NUMBER

26

26 OF 26

PLAN FILE #

221206

TECHLIGHT
INNOVATION IN ILLUMINATION

Catalog Number: _____
Project: _____ Type: _____

FEATURES & SPECIFICATIONS

APPLICATION – The Cutlass Series of high output LED luminaires are designed for new outdoor parking area lighting and to be replacement for HID area lights. They are optimal for lighting applications where long life, low maintenance, and consistent color rendering is required. The high efficiency luminaire allows the fixture to be used for parking, restaurant, quick service, shopping centers, or general area lighting applications.

CONSTRUCTION – The heavy-duty housing is constructed of cast aluminum with heat dissipating fins. The optical assemblies are sealed in place using a silicone gasket for weather tight protection. ETL listed for wet locations (IP66). Each fixture can accommodate advanced wireless control, management and reporting systems for outdoor lighting when ordered with the optional accessories (verify compatibility if using controls supplied by others) such as CTLARM mounting (required).

FINISH – A corrosion-resistant epoxy E-Coat layer that forms a uniform and all-encompassing protective barrier is applied to the luminaire prior to electrostatically applying a super durable powder coat finish. Standard colors available: Black, Bronze, US Green, White. Custom colors available upon request.

OPTICAL SYSTEM – Made with a state of the art UV stabilized acrylic high performance reflective optical assemblies that use high transmissivity materials to achieve precise photometric distributions. Available in Type III, IV, Automotive Frontside Wide, IV Tennis, V Medium and V Wide beam configurations. Star Light High Light (needs or exceeds Dark Sky requirements) in the horizontal position.

ELECTRICAL SYSTEM – Available in up to a 45,000 LED lumens in most optical distributions with either 3000K Cool White (H=500K), 4000K Neutral White or 3000K Warm White color temperatures. LED's rated for over 50,000 hours at 25°C ambient temperature. Available with 120-277V 50/60 Hz power supply. 480V and 347V input option or 0-10V dimming. Built-in surge protection up to 10 kV. Built-in Active PFC Function LED driver conforms to UL8750 standards.

ORDERING INFORMATION

Choose the best face options for the appropriate luminaire configuration for your application and enter on the line above each fixture attribute. Accessories may be factory installed, depending on the particular accessory chosen, but still be ordered as a separate line item.

CTL	COLOR TEMP	NOMINAL LUMENS	OPTICS	VOLTAGE	FINISH	OPTIONING
SERIES	C = Cool White (5000K) N = Neutral White (4000K) W = Warm White (3000K)	5L = 5,000 Lumens 8L = 8,000 Lumens 10L = 10,000 Lumens 12L = 12,000 Lumens 15L = 15,000 Lumens 20L = 20,000 Lumens 25L = 25,000 Lumens 30L = 30,000 Lumens 35L = 35,000 Lumens 40L = 40,000 Lumens 45L = 45,000 Lumens	T2 = Type II T3 = Type III T4 = Type IV FAM = Frontside Auto Wide T4T = Type IV Tennis TSM = Type V Medium TSM = Type V Wide	1 = Multi-Volt 2 = 347-480V(N)	BZ = Bronze BK = Black GR = US Green WH = White SP = Special ¹	PCR7 = 7 Pin Twist-Lock Photocell/Receptacle ANSI C136.41 & Receptacle Shrouding Cap 2AP = 2" Adjustable Slip Filter DLP = Dimming Leads Pooled HOEB = LED Battery Pack, 90 min

ACCESSORIES (Order as separate line items. Specify finish for accessories.)

PC2 480V Twist-Lock Photocell
PC7 Multi-Tap (120-277V) Twist-Lock Photocell
CTL5M Side Mount Adapter
CTL5L Adjustable Pole Mount with Side Adapter
CTL ARM Decorative Arm Mount (0.3 EPA, 3.7 lbs)
CTL ARM R Decorative Arm Mount for Round Poles (0.3 EPA, 3.7 lbs)
CTL ARM FSP Arm with Integrated PIR Motion Sensor for Square Pole
CTL ARM R FSP Arm with Integrated PIR Motion Sensor for Round Pole
S215 Angled Back Light Shield
TLWFSH-100 Remote Handheld Sensor Configuration Tool
TLWFSFP-L2 300° lens, maximum coverage 40' diameter from 8' height
TLWFSFP-L3 300° lens, maximum coverage 40' diameter from 20' height
TLWFSFP-L4 300° lens, maximum coverage 80' diameter from 40' height
TLWFSFP-L7 300° lens, maximum coverage 100' diameter from 40' height
CTLT230 Horizontal 2-3/8" OD Terom Mount
VBWM Wall Mount Adapter

NOTES

- Multi-Volt is an auto ranging power supply from 100V to 300V input.
- Custom RAL color matching is available. Contact your sales representative for additional info.
- Slide mount adapter for direct pole mounts cannot be used when mounting fixtures at 90° increments.
- Requires one S215 for 8'-20L units, two S215 for 20L-45L units.
- PCR7 photocell receptacle must be oriented in the field so that the light sensor on the control is facing North. When used with the CTL2AF, the fixture must be in a downward facing position (>90° tilt). Use of the PCR7 with a fixture in an upward facing position will void warranty.
- Accessory mounting device must be ordered for each cutlass luminaire to provide mounting means.
- Do not tilt the CTL more than 45 degrees toward horizontal when using the CTL2AF & CTL2B.
- Only available in certain optics and wattages. See LUMINAIRE CHARACTERISTICS chart for details.
- DLP Option Required for Arms with Integrated PIR Motion Sensors.
- Only available in 5L, 8L, 10L, 12L and 15L.

DesignLight Consortium[®] Qualified. Please go to www.designlight.org for the current Qualified Products List. Further details about qualified models may be found under Family Models.

© 2021 Techlight Inc. www.techlight.com REV: 2022101-07

CTL SERIES

High Lumen Output Cutlass LED Area Light

Picture shows: CTL 45L w/ CTLARM

SERIES	HOUSING HEIGHT	LENGTH & WIDTH	EPA (FT ²)
CTL	4.44'	17.25' x 12.00'	See Chart

MOUNTING – Proprietary slide-on mounting system allows for quick installation. The CTL can be ordered with an aesthetically pleasing arm mount (CTLARM – required for integrating dynamic control systems), a 2" adjustable slip filter (CTL2AF) for mounting on a standard 2-3/8" OD Terom and an entire complement of pole brackets with integrated quick mount technology CTLSM for direct mounting to poles in angles(1 @ 90° or 0/180 (2 @ 180°).

LISTINGS – Complies with UL8750, ETL listed for wet locations. Meets US and Canadian safety standards. 40°C to 50°C ambient operation. RoHS Compliant.

WARRANTY – The complete luminaire is covered by a 5-year limited warranty.

TYPE S1& S2

WDGE1 LED
Architectural Wall Sconce

Specifications

Depth (D1): 5.5"
Depth (D2): 1.5"
Height: 8"
Width: 9"
Weight: 9 lbs (without options)

Catalog Number: _____
Notes: _____
Type: _____

Hit the Tab key or mouse over the page to see all interactive elements.

Introduction

The WDGE LED family is designed to meet specifier's every wall-mounted lighting need in a widely accepted shape that blends with any architecture. The clean rectilinear design comes in four sizes with lumen packages ranging from 1,200 to 25,000 lumens, providing true site-wide solution.

WDGE1 delivers up to 2,000 lumens with a soft, non-pivotal light source, creating a visually comfortable environment. The compact size of WDGE1, with its integrated emergency battery backup option, makes it an ideal over-the-door wall-mounted lighting solution.

WDGE LED Family Overview

Luminaire	Standard Fm, 9°C	Cold Fm, -20°C	Sensor	P1	P2	P3	P4	P5	P6
WDGE1 LED	4W	--	--	1,200	2,000	--	--	--	--
WDGE2 LED	10W	18W	Standard / nLight	1,200	2,000	3,000	4,500	6,000	--
WDGE3 LED	15W	18W	Standard / nLight	7,500	8,500	10,000	12,000	--	--
WDGE4 LED	--	--	Standard / nLight	12,000	16,000	18,000	22,000	22,000	25,000

Ordering Information

EXAMPLE: WDGE1 LED P2 40K 80CRI VF MVOLT SRM PE DDBXD

Series	Package	Color Temperature	CR	Distribution	Voltage	Mounting
WDGE1 LED	P1	27K 2700K	80CRI	VF	Visual comfort forward throw	MVOLT
	P2	30K 3000K	90CRI	VW	Visual comfort wide	347 ²

Options

Options	Finish
E48W ³ Emergency battery backup, (Certified in CA Title 20 MAE48S (4W, 0°C min))	DDBXD Dark bronze
PE Photocell, Battery Type	DBLXD Black
D5 Dual switching comes with 2 drivers and 2 light engines; see page 3 for details	DNAXD Natural aluminum
D4G 0-10V dimming wires pulled outside fixture (for use with an external control, ordered separately)	DWHXD White
BKE Bottom conduit entry for back box (P89W), total of 4 entry points.	DSSXD Sandstone
BAA Bay Emergency AC Compliant	

Accessories
Control and Report Systems

WDGEARS 0080 WDGE Black Architectural Wall Sconce (specify finish)
WDGE1P8W 0080D WDGE1 surface-mounted back box (specify finish)

NOTES

- 50K not available in 90CRI.
- 347V not available with E48W, D5 or PE.
- E48W not available with PE or D5.
- PE not available with D5.
- Not qualified for D.L.C. Not available with E48W.

LITHONIA LIGHTING COMMERCIAL OUTDOOR One Lithonia Way • Conyers, Georgia 30012 • Phone: 1-800-755-SERV (2378) • www.lithonia.com
© 2019-2022 Acuity Brands Lighting, Inc. All rights reserved. WDGE1 LED Rev. 11/21/22

TYPE S3

WAC LIGHTING

Block
Outdoor Wall Sconce 3000K

Model & Size	Color Temp & CRI	Finish	Watt	LED Lumens	Delivered Lumens	Title 24
WS-W61806 6"	3000K 90	AL Brushed Aluminum BK Black BZ Bronze	9W	615	540	Yes

Example: **WS-W61806-BZ**
For custom requests please contact customs@wacighting.com

DESCRIPTION

Sometimes the simplest forms are the most sophisticated, like this clean, effortless block design featuring eye-catching die-cast glass accents and weather-resistant finishes in aluminum and black.

FEATURES

- Weather-resistant finish
- Driver concealed within the fixture
- 5-year warranty

SPECIFICATIONS

Color Temp: 3000K
Input: 120-277 VAC, 50/60Hz
CRI: 90
Dimming: ELV: 100-10%, 0-10V: 100-5%
Rated Life: 50000 Hours
Mounting: Can be mounted on wall in all orientations
Standards: ETL, cETL, IP65, Title 24 JAB-2019 Compliant
Wet Location Listed

Construction: Aluminum body with die-cast glass diffuser

REPLACEMENT PARTS

Glass - _____

Fixture Type: _____
Catalog Number: _____
Project: _____
Location: _____

FINISHES:

Bronze Black Brushed Aluminum

LINE DRAWING:

WS-W61806

wacighting.com | Phone (800) 526-2588 | Fax (800) 526-2585 | Headquarters/Eastern Distribution Center 44 Harbor Park Drive Port Washington, NY 11050
WAC Lighting reserves the right to modify the design of our products at any time as part of the company's continuous improvement program. April 2021

TYPE S4

LUMINAIRE SCHEDULE							
TYPE	KELVIN	DESCRIPTION	MOUNTING HEIGHT	LUMENS	LOAD (VA)	VOLTS	MANUFACTURER/CAT. NO.
S1	4000K LED	SINGLE HEAD LED AREA LIGHT, TYPE 3 DISTRIBUTION, INTEGRAL HOUSE SIDED SHIELD	20' ABOVE GRADE	7796	68	MVOLT	TECH LIGHTING CTLN8LT3-1-BZ-S215 CTL ARMFSP-BZ
S2	4000K LED	SINGLE HEAD LED AREA LIGHT, TYPE 5 DISTRIBUTION	20' ABOVE GRADE	10,110	93 / EACH	MVOLT	TECH LIGHTING CTLN10LT5M-1-BZ CTL ARMFSP-BZ, TLWFSFP-L3
S3	3500K LED	SMALL SIZED WALL MOUNTED LED SCONCE, FORWARD THROW WITH INTEGRAL 90 MINUTE BATTERY BACKUP	8' ABOVE GRADE	1194	10	120	LITHONIA LIGHTING WDGE1LED-P2-35K-80CRI-VF-MVOLT-E4WH
S4	3000K LED	WET LISTED LED TRELIS SCONCE	7.5' ABOVE GRADE	615	9	120	WAC LIGHTING WS-W61806-3000K-90-9W

GENERAL NOTES:

- VERIFY EXACT FIXTURE'S CATALOG NUMBER, FINISH, LAMP(S), LENGTHS AND OPTIONS WITH ARCHITECT/INTERIORS/OWNER PRIOR TO ORDERING.
- CONTRACTOR TO VERIFY DIMMING CONTROLS ARE COMPATIBLE WITH LIGHT FIXTURE'S PURCHASED.
- CONTRACTOR TO PROVIDE ALL PARTS AND ACCESSORIES FOR A COMPLETE, AND FUNCTIONING SYSTEM.

NOTES:

A. SPARE