

OUTLOOK POWERS & GRINNELL

EL PASO COUNTY, COLORADO

SITE DEVELOPMENT PLAN

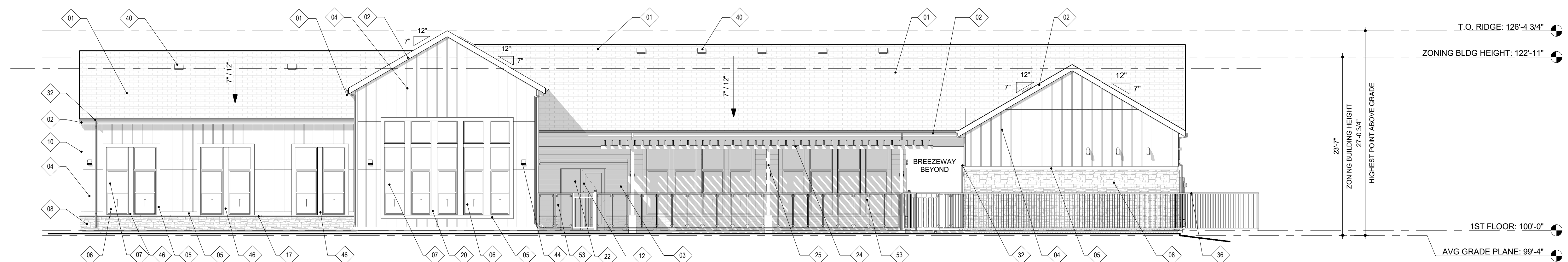


MATERIAL & FINISH LEGEND		
	ARCHITECTURAL COMPOSITE ROOF	TAMKO RUSTIC BLACK
	FIBER CEMENT TRIM	SHERWIN WILLIAMS SW 7069, IRON ORE
	FIBER CEMENT BOARD & BATTEN SIDING	SHERWIN WILLIAMS SW 7063, NEBULOUS WHITE
	8" FIBER CEMENT LAP SIDING	SHERWIN WILLIAMS SW 6012, BROWSE BROWN
	FIBER CEMENT BOARD & BATTEN SIDING	SHERWIN WILLIAMS SW 7674, PEPPERCORN
	ADHEARED SYNTHETIC STONE VENEER	SUNSET MASONRY LEDGE, WINTERSKY

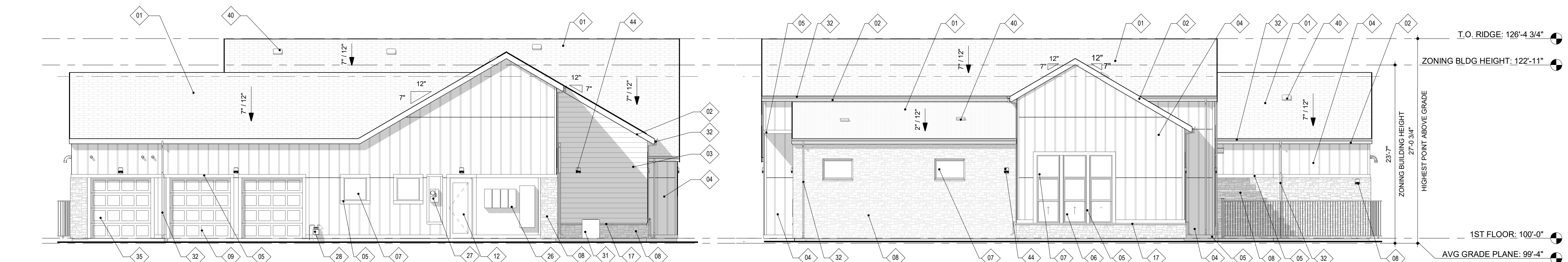
NOTE: CLUBHOUSE WILL BE PROVIDED WITH NFPA 13 AUTOMATIC SPRINKLER FIRE PROTECTION

OUTLOOK AT POWER AND GRINNELL: EVERGREEN DEVELOPMENT			
STELLA COLOR SCHEMES			
CLUBHOUSE			
ROOF	TAMKO RUSTIC BLACK	BODY 3	SHERWIN WILLIAMS SW 7674 PEPPERCORN
TRIM + GARAGE	SHERWIN WILLIAMS SW 7069 IRON ORE	STONE	SUNSET MASONRY LEDGE WINTERSKY
BODY 1	SHERWIN WILLIAMS SW 7063 NEBULOUS WHITE	RAILINGS	CARDINAL POWDER COAT P004-BR23 BRONZE 40% GLOSS
BODY 2	SHERWIN WILLIAMS SW 6012 BROWSE BROWN	WINDOWS	BRONZE

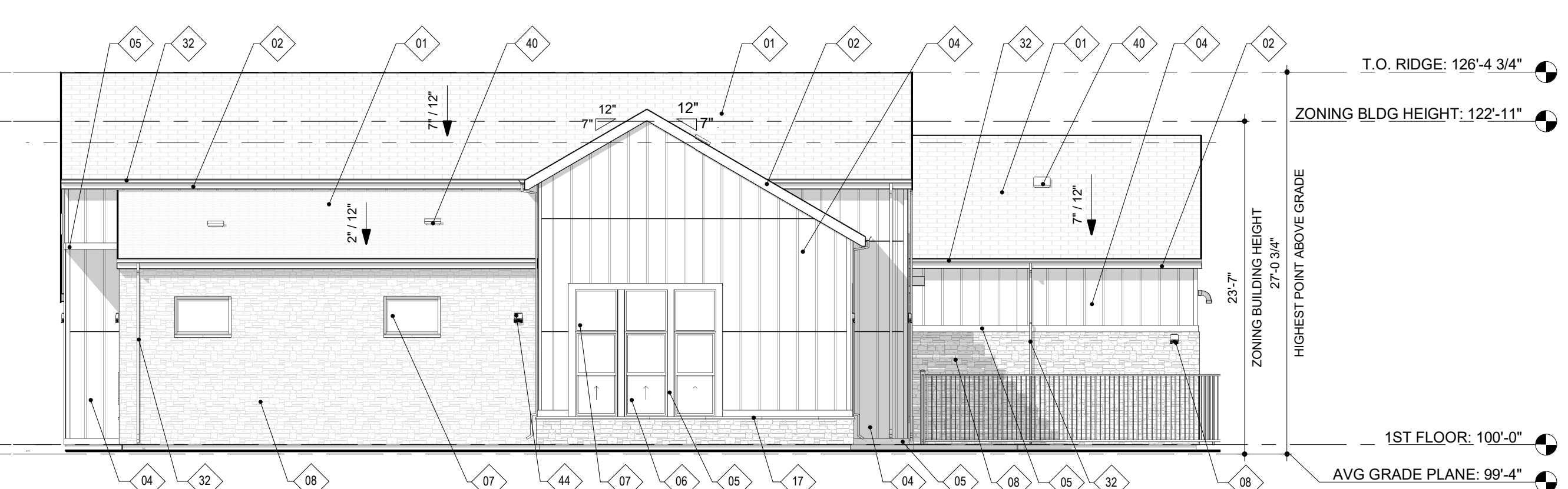
KEYNOTES	
01	ARCHITECTURAL COMPOSITE SHINGLE ROOF
02	5/4" X 1/2" PAINTED FIBER CEMENT FASCIA
03	8" FIBER CEMENT LAP SIDING
04	FIBER CEMENT BOARD & BATTEN PANEL SIDING
05	5/4" X 6" PAINTED FIBER CEMENT ACCENT TRIM
06	VINYL SINGLE-HUNG WINDOW
07	VINYL FIXED WINDOW
08	ADHEARED STONE VENEER
09	OVERHEAD GARAGE DOOR: STEEL
10	5/4" X 4" PAINTED FIBER CEMENT ACCENT TRIM
12	BUILDING ENTRY DOOR, MAINTAIN ACCESSIBLE ROUTE TO THIS LOCATION
17	STONE SILLCAP
20	5/4" X 1/2" PAINTED FIBER CEMENT ACCENT TRIM
22	ALUMINUM STOREFRONT SYSTEM
24	PAINTED METAL TRELLIS
25	PAINTED METAL COLUMN
26	ELECTRICAL EQUIPMENT
27	ELECTRICAL METER
28	GAS METER
29	FIRE DEPARTMENT CONNECTION
31	GROUND-MOUNTED A/C CONDENSING UNIT RE: LANDSCAPE SHEETS FOR SCREENING
32	PREFINISHED METAL GUTTER AND DOWNSPOUT
34	BARN DOOR
35	POOL EQUIPMENT ROOM DOOR
36	60" TALL METAL POOL BARRIER FENCE & GATE
40	ROOF VENT; MATCH ROOF COLOR
44	EXTERIOR LIGHTING; RE: PHOTOMETRIC PLAN
46	5/4" X 6" FIBER CEMENT ACCENT TRIM
49	BUILDING ADDRESS
53	60" TALL GLASS POOL BARRIER FENCE & GATE



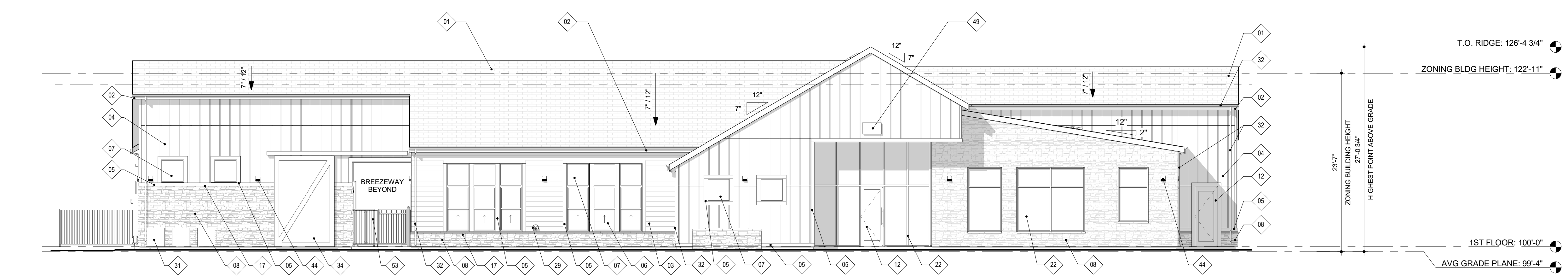
4 REAR ELEVATION - CLUBHOUSE
1/8" = 1'-0"



3 RIGHT ELEVATION - CLUBHOUSE
1/8" = 1'-0"



2 LEFT ELEVATION - CLUBHOUSE
1/8" = 1'-0"



1 FRONT ELEVATION - CLUBHOUSE
1/8" = 1'-0"

N.E.S. Inc.
619 N. Cascade Avenue, Suite 200
Colorado Springs, CO 80903
Tel. 719.471.0073
Fax 719.471.0267
www.nescolorado.com
© 2012. All Rights Reserved.

community ■ planning ■ architecture

OUTLOOK POWERS & GRINNELL
SITE DEVELOPMENT PLAN
EL PASO COUNTY, COLORADO

DATE:	05/08/2023
PROJECT MGR:	J5
PREPARED BY:	AA

ENTITLEMENT

ISSUE	BY	DESCRIPTION
4.26.21		PER CITY COMMENTS

ELEVATIONS - CLUBHOUSE

10
10 26
221206

P:\Evergreen Devco, Inc\Drawings\Planning\DP\Powers_Grinnell_SDP_TITLEDLOCK.dwg [COUNTY_COVER] 3/29/2023 2:10:39 PM D:\mason

OUTLOOK POWERS & GRINNELL

EL PASO COUNTY, COLORADO

SITE DEVELOPMENT PLAN



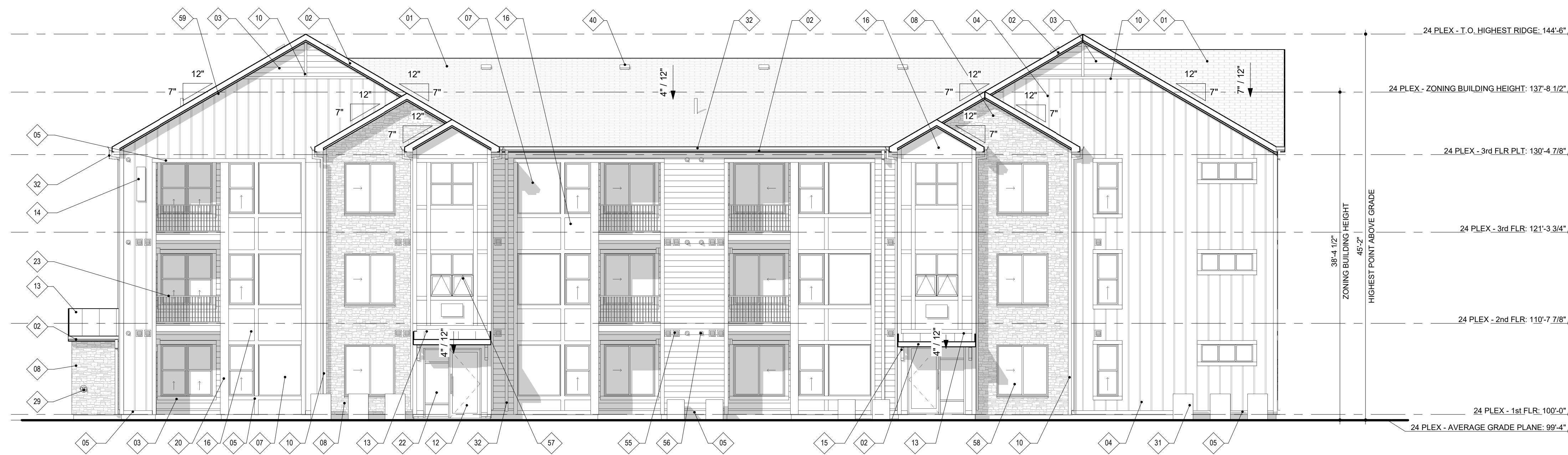
MATERIAL & FINISH LEGEND	
[Symbol]	8" FIBER CEMENT LAP SIDING
[Symbol]	FIBER CEMENT BOARD & BATTEN SIDING
[Symbol]	FIBER CEMENT TRIM
[Symbol]	ADHEARED SYNTHETIC STONE VENEER
[Symbol]	METAL STANDING SEAM ROOF
[Symbol]	ARCHITECTURAL COMPOSITE ROOF

OUTLOOK AT POWERS AND GRINNELL: EVERGREEN DEVELOPMENT

STELLA COLOR SCHEMES			
	SCHEME 1	SCHEME 2	SCHEME 3
ROOF	TAMKO RUSTIC BLACK	TAMKO RUSTIC BLACK	TAMKO RUSTIC BLACK
METAL ROOF	MATTE BLACK	MATTE BLACK	MATTE BLACK
BODY 1 + TRIM	SHERWIN WILLIAMS SW 7069 IRON ORE	SHERWIN WILLIAMS SW 7069 IRON ORE	SHERWIN WILLIAMS SW 7069 IRON ORE
BODY 2	SHERWIN WILLIAMS SW 7019 GAUNTLET GRAY	SHERWIN WILLIAMS SW 2836 QUARTERSAWN OAK	SHERWIN WILLIAMS SW 6012 BROWSE BROWN
BODY 3	SHERWIN WILLIAMS SW 7063 NEBULOUS WHITE	SHERWIN WILLIAMS SW 7063 NEBULOUS WHITE	SHERWIN WILLIAMS SW 7063 NEBULOUS WHITE
STONE	SUNSET MASONRY LEDGE WINTERSKY	SUNSET MASONRY LEDGE WINTERSKY	SUNSET MASONRY LEDGE WINTERSKY
RAILINGS	CARDINAL POWDER COAT P004-BR23 BRONZE 40% GLOSS	CARDINAL POWDER COAT P004-BR23 BRONZE 40% GLOSS	CARDINAL POWDER COAT P004-BR23 BRONZE 40% GLOSS
TRIM + GARAGE	CLOPAY VALUE PLUS SERIES WHITE	CLOPAY VALUE PLUS SERIES WHITE	CLOPAY VALUE PLUS SERIES WHITE
WINDOWS	WHITE	WHITE	WHITE

NOTE: ALL BUILDINGS WILL BE PROVIDED WITH NFPA 13R AUTOMATIC FIRE SPRINKLER PROTECTION AT ALL LEVELS

KEYNOTES	
NO.	NOTE
01	ARCHITECTURAL COMPOSITE SHINGLE ROOF
02	5/4" X 8" PAINTED FIBER CEMENT FASCIA
03	8" FIBER CEMENT LAP SIDING
04	FIBER CEMENT BOARD & BATTEN PANEL SIDING
05	5/4" X 6" PAINTED FIBER CEMENT ACCENT TRIM
07	VINYL FIXED WINDOW
08	SYNTHETIC STONE VENEER SYSTEM
10	5/4" X 4" PAINTED FIBER CEMENT ACCENT TRIM
12	BUILDING ENTRY DOOR, MAINTAIN ACCESSIBLE ROUTE TO THIS LOCATION
13	STANDING SEAM METAL ROOF
14	BUILDING ADDRESS SIGNAGE
15	DECORATIVE ROOF BRACKET
16	FIBER CEMENT PANEL SIDING
20	5/4" X 12" PAINTED FIBER CEMENT ACCENT TRIM
22	ALUMINUM STOREFRONT SYSTEM W/ INSULATED, LOW-E GLAZING
23	42" TALL PAINTED METAL RAILING AT UNIT BALCONY
29	FIRE DEPARTMENT CONNECTION
31	GROUND-MOUNTED A/C CONDENSING UNIT
32	PREFINISHED METAL GUTTER AND DOWNSPOUT
40	ROOF VENT, MATCH ROOF COLOR
55	MECHANICAL VENT
56	CONCENTRIC VENT
57	AWNING WINDOW
58	SILDER WINDOW
59	FREIZE BOARD



1 FRONT ELEVATION - 24 PLEX
1/8" = 1'-0"

N.E.S. Inc.
619 N. Cascade Avenue, Suite 200
Colorado Springs, CO 80903
Tel. 719.471.0073
Fax 719.471.0267
www.nescolorado.com
© 2012. All Rights Reserved.

community ■ planning ■ architecture

OUTLOOK POWERS & GRINNELL

SITE DEVELOPMENT PLAN

EL PASO COUNTY, COLORADO

DATE: 05/08/2023
PROJECT MGR: JS
PREPARED BY: AA

ENTITLEMENT

ISSUE 1	BY	DESCRIPTION

ELEVATIONS - 24 PLEX

12
12 26

221206

P:\Evergreen Devcs, Inc\Drawings\Planning\Outlook Powers, Grinnell - SD - TITLE BLOCK.dwg [COUNTY COVER] 3/29/2021 2:10:39 PM Bowman

OUTLOOK POWERS & GRINNELL

EL PASO COUNTY, COLORADO

SITE DEVELOPMENT PLAN

MATERIAL & FINISH LEGEND	
	8" FIBER CEMENT LAP SIDING
	FIBER CEMENT BOARD & BATTEN SIDING
	FIBER CEMENT TRIM
	ADHEARED SYNTHETIC STONE VENEER
	METAL STANDING SEAM ROOF
	ARCHITECTURAL COMPOSITE ROOF

OUTLOOK AT POWERS AND GRINNELL: EVERGREEN DEVELOPMENT

STELLA COLOR SCHEMES			
	SCHEME 1	SCHEME 2	SCHEME 3
ROOF	TAMKO RUSTIC BLACK	TAMKO RUSTIC BLACK	TAMKO RUSTIC BLACK
METAL ROOF	MATTE BLACK	MATTE BLACK	MATTE BLACK
BODY 1 + TRIM	SHERWIN WILLIAMS SW 7069 IRON ORE	SHERWIN WILLIAMS SW 7069 IRON ORE	SHERWIN WILLIAMS SW 7069 IRON ORE
BODY 2	SHERWIN WILLIAMS SW 7019 GAUNTLET GRAY	SHERWIN WILLIAMS SW 2836 QUARTERSAWN OAK	SHERWIN WILLIAMS SW 6012 BROWSE BROWN
BODY 3	SHERWIN WILLIAMS SW 7063 NEBULOUS WHITE	SHERWIN WILLIAMS SW 7063 NEBULOUS WHITE	SHERWIN WILLIAMS SW 7063 NEBULOUS WHITE
STONE	SUNSET MASONRY LEDGE WINTERSKY	SUNSET MASONRY LEDGE WINTERSKY	SUNSET MASONRY LEDGE WINTERSKY
RAILINGS	CARDINAL POWDER COAT P004-BR23 BRONZE 40% GLOSS	CARDINAL POWDER COAT P004-BR23 BRONZE 40% GLOSS	CARDINAL POWDER COAT P004-BR23 BRONZE 40% GLOSS
TRIM + GARAGE	CLOPAY VALUE PLUS SERIES WHITE	CLOPAY VALUE PLUS SERIES WHITE	CLOPAY VALUE PLUS SERIES WHITE
WINDOWS	WHITE	WHITE	WHITE

NOTE: ALL BUILDINGS WILL BE PROVIDED WITH NFPA 13R AUTOMATIC FIRE SPRINKLER PROTECTION AT ALL LEVELS

KEYNOTES	
NO.	NOTE
01	ARCHITECTURAL COMPOSITE SHINGLE ROOF
02	5/4" X 8" PAINTED FIBER CEMENT FASCIA
03	8" FIBER CEMENT LAP SIDING
04	FIBER CEMENT BOARD & BATTEN PANEL SIDING
05	5/4" X 6" PAINTED FIBER CEMENT ACCENT TRIM
06	VINYL SINGLE-HUNG WINDOW
07	VINYL FIXED WINDOW
08	SYNTHETIC STONE VENEER SYSTEM
10	5/4" X 4" PAINTED FIBER CEMENT ACCENT TRIM
11	FULL-LITE EXTERIOR DOOR
13	STANDING SEAM METAL ROOF
15	DECORATIVE ROOF BRACKET
16	FIBER CEMENT PANEL SIDING
23	42" TALL PAINTED METAL RAILING AT UNIT BALCONY
27	ELECTRICAL METER
28	GAS METER
29	FIRE DEPARTMENT CONNECTION
31	GROUND-MOUNTED A/C CONDENSING UNIT
32	PREFINISHED METAL GUTTER AND DOWNSPOUT
33	WATER ROOM AND FIRE ROOF VENT; MATCH ROOF COLOR
40	EXTERIOR LIGHTING, RE: PHOTOMETRIC PLAN
44	MECHANICAL VENT
56	CONCENTRIC VENT
58	SILDER WINDOW
59	FREIZE BOARD

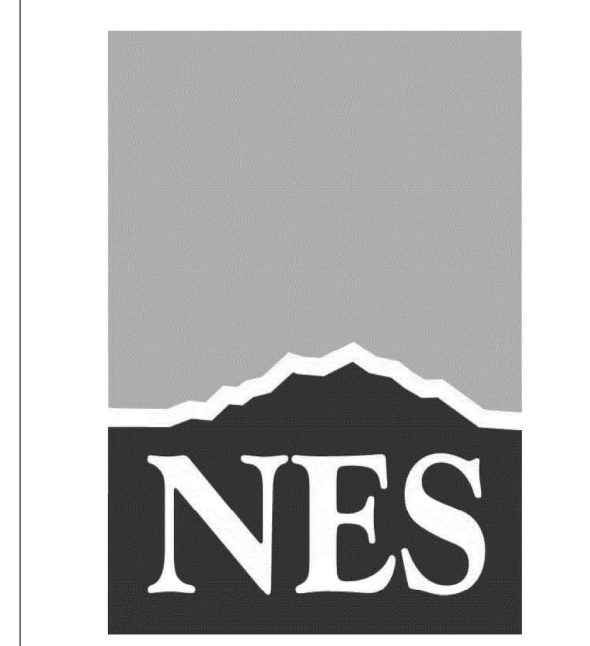


3 RIGHT ELEVATION - 24 PLEX
1/8" = 1'-0"

2 LEFT ELEVATION - 24 PLEX
1/8" = 1'-0"



1 REAR ELEVATION - 24 PLEX
1/8" = 1'-0"



N.E.S. Inc.
619 N. Cascade Avenue, Suite 200
Colorado Springs, CO 80903
Tel. 719.471.0073
Fax 719.471.0267
www.nescolorado.com
© 2012. All Rights Reserved.



community ■ planning ■ architecture

OUTLOOK POWERS & GRINNELL

SITE DEVELOPMENT PLAN
EL PASO COUNTY, COLORADO

DATE: 05/08/2023
PROJECT MGR: JS
PREPARED BY: AA

ENTITLEMENT

ISSUE	BY	DESCRIPTION

ELEVATIONS - 24 PLEX

13
13 26

221206

P:\Evergreen Devcs, Inc\Drawings\Planning\DP\Outlook Powers, Grinnell - SD - TITLEBLOCK.dwg [COUNTY COVER] 3/29/2021 2:10:39 PM bawson

OUTLOOK POWERS & GRINNELL

EL PASO COUNTY, COLORADO

SITE DEVELOPMENT PLAN



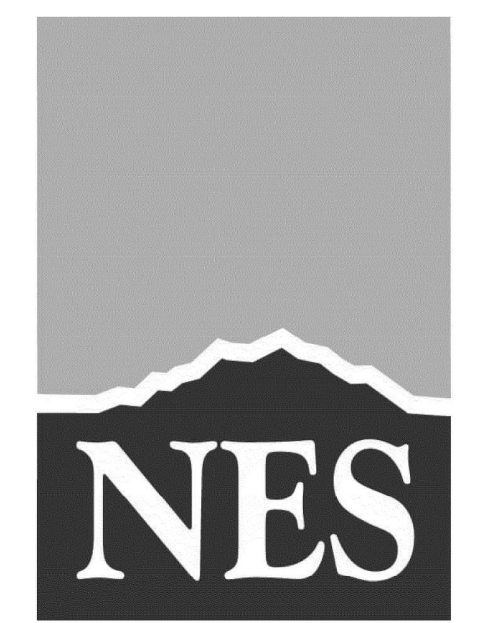
MATERIAL & FINISH LEGEND	
	8" FIBER CEMENT LAP SIDING
	FIBER CEMENT BOARD & BATTEN SIDING
	FIBER CEMENT TRIM
	ADHERED SYNTHETIC STONE VENEER
	METAL STANDING SEAM ROOF
	ARCHITECTURAL COMPOSITE ROOF

OUTLOOK AT POWERS AND GRINNELL: EVERGREEN DEVELOPMENT

STELLA COLOR SCHEMES			
	SCHEME 1	SCHEME 2	SCHEME 3
ROOF	TAMKO RUSTIC BLACK	TAMKO RUSTIC BLACK	TAMKO RUSTIC BLACK
METAL ROOF	MATTE BLACK	MATTE BLACK	MATTE BLACK
BODY 1 + TRIM	SHERWIN WILLIAMS SW 7069 IRON ORE	SHERWIN WILLIAMS SW 7069 IRON ORE	SHERWIN WILLIAMS SW 7069 IRON ORE
BODY 2	SHERWIN WILLIAMS SW 7019 GAUNTLET GRAY	SHERWIN WILLIAMS SW 2836 QUARTERSAWN OAK	SHERWIN WILLIAMS SW 6012 BROWSE BROWN
BODY 3	SHERWIN WILLIAMS SW 7063 NEBULOUS WHITE	SHERWIN WILLIAMS SW 7063 NEBULOUS WHITE	SHERWIN WILLIAMS SW 7063 NEBULOUS WHITE
STONE	SUNSET MASONRY LEDGE WINTERSKY	SUNSET MASONRY LEDGE WINTERSKY	SUNSET MASONRY LEDGE WINTERSKY
RAILINGS	CARDINAL POWDER COAT P004-BR23 BRONZE 40% GLOSS	CARDINAL POWDER COAT P004-BR23 BRONZE 40% GLOSS	CARDINAL POWDER COAT P004-BR23 BRONZE 40% GLOSS
TRIM + GARAGE	CLOPAY VALUE PLUS SERIES WHITE	CLOPAY VALUE PLUS SERIES WHITE	CLOPAY VALUE PLUS SERIES WHITE
WINDOWS	WHITE	WHITE	WHITE

NOTE: ALL BUILDINGS WILL BE PROVIDED WITH NFPA 13R AUTOMATIC FIRE SPRINKLER PROTECTION AT ALL LEVELS

KEYNOTES	
NO.	NOTE
01	ARCHITECTURAL COMPOSITE SHINGLE ROOF
02	5/4" X 8" PAINTED FIBER CEMENT FASCIA
03	8" FIBER CEMENT LAP SIDING
04	FIBER CEMENT BOARD & BATTEN PANEL SIDING
05	5/4" X 6" PAINTED FIBER CEMENT ACCENT TRIM
06	VINYL SINGLE-HUNG WINDOW
07	VINYL FIXED WINDOW
08	SYNTHETIC STONE VENEER SYSTEM
10	5/4" X 4" PAINTED FIBER CEMENT ACCENT TRIM
12	BUILDING ENTRY DOOR, MAINTAIN ACCESSIBLE ROUTE TO THIS LOCATION
13	STANDING SEAM METAL ROOF
14	BUILDING ADDRESS SIGNAGE
15	DECORATIVE ROOF BRACKET
16	FIBER CEMENT PANEL SIDING
20	5/4" X 12" PAINTED FIBER CEMENT ACCENT TRIM
22	ALUMINUM STOREFRONT SYSTEM W/ INSULATED, LOW-E GLAZING
23	42" TALL PAINTED METAL RAILING AT UNIT BALCONY
29	FIRE DEPARTMENT CONNECTION
32	PREFINISHED METAL GUTTER AND DOWNSPOUT
49	BUILDING TENANT SIGNAGE
55	MECHANICAL VENT
56	CONCENTRIC VENT
57	AWNING WINDOW
58	SILDER WINDOW



N.E.S. Inc.
619 N. Cascade Avenue, Suite 200
Colorado Springs, CO 80903
Tel. 719.471.0073
Fax 719.471.0267
www.nescolorado.com
© 2012. All Rights Reserved.



community ■ planning ■ architecture

OUTLOOK POWERS & GRINNELL

SITE DEVELOPMENT PLAN
EL PASO COUNTY, COLORADO

DATE: 05/08/2023
PROJECT MGR: JS
PREPARED BY: AA



1 FRONT ELEVATION - 36 PLEX
1/8" = 1'-0"

ENTITLEMENT

ISSUE	BY	DESCRIPTION

ELEVATIONS - 36 PLEX

15
15 26
221206

P:\Evergreen Devs, Inc\Drawings\Planning\DP\Outlook Powers, Grinnell - SD - TITLE BLOCK.dwg [COUNTY COVER] 3/29/2023 2:10:39 PM bdominion

OUTLOOK POWERS & GRINNELL

EL PASO COUNTY, COLORADO

SITE DEVELOPMENT PLAN

MATERIAL & FINISH LEGEND	
	8" FIBER CEMENT LAP SIDING
	FIBER CEMENT BOARD & BATTEN SIDING
	FIBER CEMENT TRIM
	ADHEARED SYNTHETIC STONE VENEER
	METAL STANDING SEAM ROOF
	ARCHITECTURAL COMPOSITE ROOF

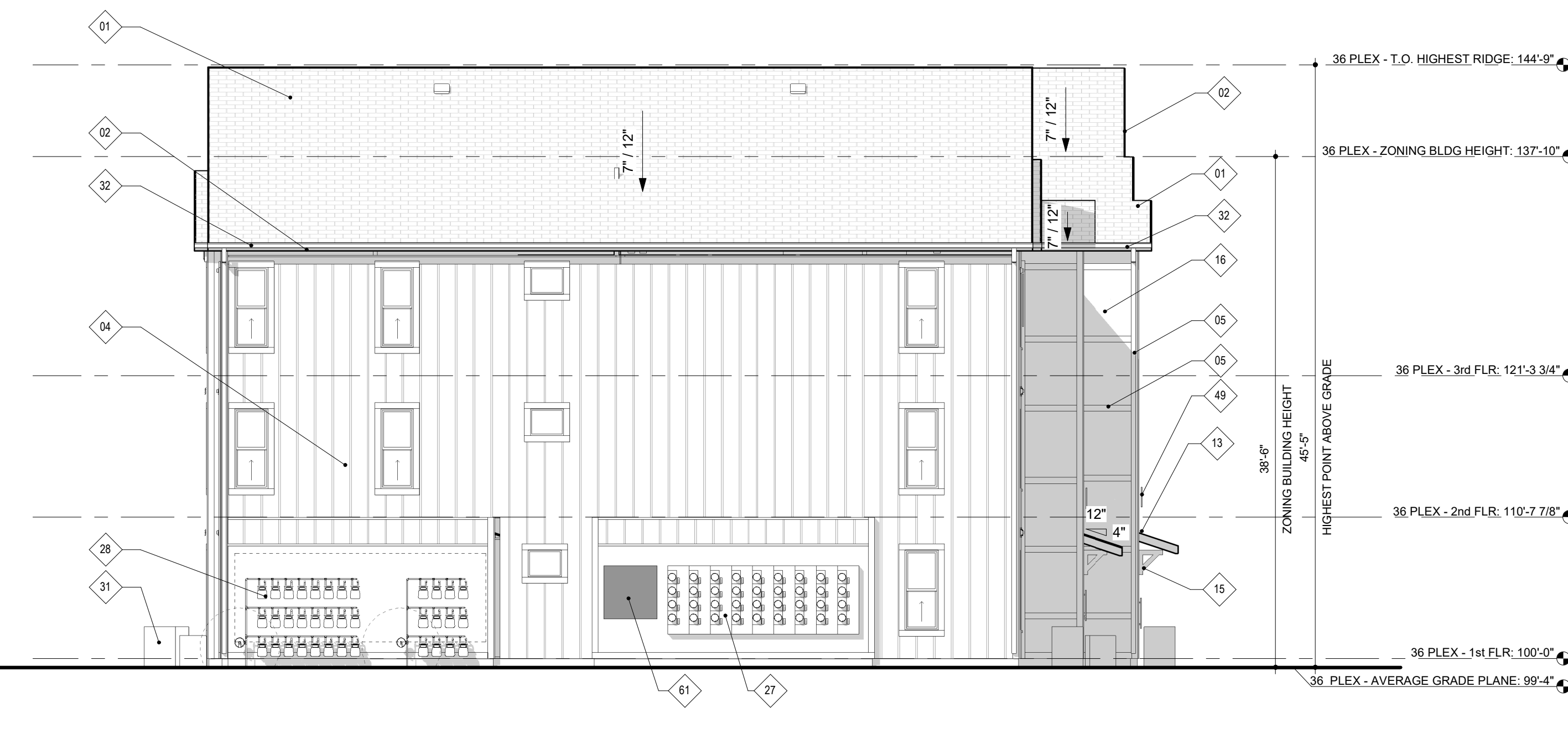
OUTLOOK AT POWERS AND GRINNELL: EVERGREEN DEVELOPMENT			
STELLA COLOR SCHEMES			
	SCHEME 1	SCHEME 2	SCHEME 3
ROOF	TAMKO RUSTIC BLACK	TAMKO RUSTIC BLACK	TAMKO RUSTIC BLACK
METAL ROOF	MATTE BLACK	MATTE BLACK	MATTE BLACK
BODY 1 + TRIM	SHERWIN WILLIAMS SW 7069 IRON ORE	SHERWIN WILLIAMS SW 7069 IRON ORE	SHERWIN WILLIAMS SW 7069 IRON ORE
BODY 2	SHERWIN WILLIAMS SW 7019 GAUNTLET GRAY	SHERWIN WILLIAMS SW 2836 QUARTERSAWN OAK	SHERWIN WILLIAMS SW 6012 BROWSE BROWN
BODY 3	SHERWIN WILLIAMS SW 7063 NEBULOUS WHITE	SHERWIN WILLIAMS SW 7063 NEBULOUS WHITE	SHERWIN WILLIAMS SW 7063 NEBULOUS WHITE
STONE	SUNSET MASONRY LEDGE WINTERSKY	SUNSET MASONRY LEDGE WINTERSKY	SUNSET MASONRY LEDGE WINTERSKY
RAILINGS	CARDINAL POWDER COAT P004-BR23 BRONZE 40% GLOSS	CARDINAL POWDER COAT P004-BR23 BRONZE 40% GLOSS	CARDINAL POWDER COAT P004-BR23 BRONZE 40% GLOSS
TRIM + GARAGE	CLOPAY VALUE PLUS SERIES WHITE	CLOPAY VALUE PLUS SERIES WHITE	CLOPAY VALUE PLUS SERIES WHITE
WINDOWS	WHITE	WHITE	WHITE

NOTE: ALL BUILDINGS WILL BE PROVIDED WITH NFPA 13R AUTOMATIC FIRE SPRINKLER PROTECTION AT ALL LEVELS

KEYNOTES	
NO.	NOTE
01	ARCHITECTURAL COMPOSITE SHINGLE ROOF
02	5/4" X 8" PAINTED FIBER CEMENT FASCIA
03	8" FIBER CEMENT LAP SIDING
04	FIBER CEMENT BOARD & BATTEN PANEL SIDING
05	5/4" X 6" PAINTED FIBER CEMENT ACCENT TRIM
06	VINYL SINGLE-HUNG WINDOW
07	VINYL FIXED WINDOW
08	SYNTHETIC STONE VENEER SYSTEM
10	5/4" X 4" PAINTED FIBER CEMENT ACCENT TRIM
11	FULL-LITE EXTERIOR DOOR
13	STANDING SEAM METAL ROOF
15	DECORATIVE ROOF BRACKET
16	FIBER CEMENT PANEL SIDING
23	42" TALL PAINTED METAL RAILING AT UNIT BALCONY
27	ELECTRICAL METER
28	GAS METER
29	FIRE DEPARTMENT CONNECTION
31	GROUND-MOUNTED A/C CONDENSING UNIT
32	PREFINISHED METAL GUTTER AND DOWNSPOUT
33	WATER ROOM AND FIRE
40	ROOF VENT: MATCH ROOF COLOR
44	EXTERIOR LIGHTING, RE: PHOTOMETRIC PLAN
49	BUILDING TENANT SIGNAGE
55	MECHANICAL VENT
56	CONCENTRIC VENT
58	SILDER WINDOW
59	FREIZE BOARD
60	
61	



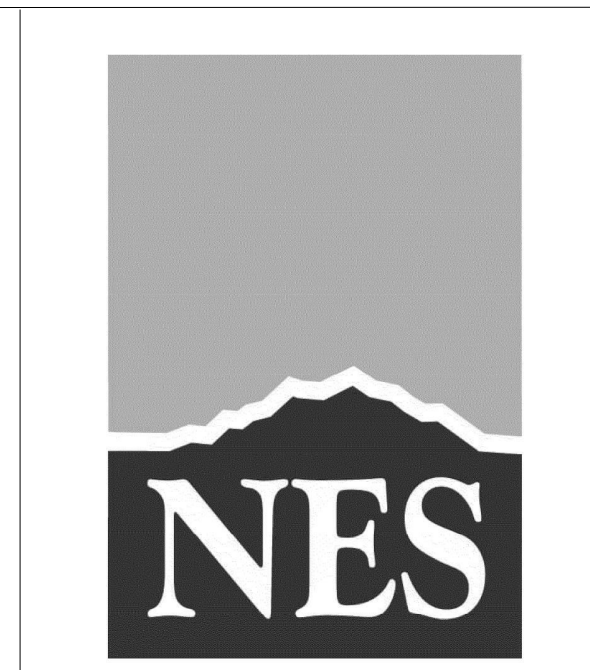
3 RIGHT ELEVATION - 36 PLEX
1/8" = 1'-0"



2 LEFT ELEVATION - 36 PLEX
1/8" = 1'-0"



1 REAR ELEVATION - 36 PLEX
1/8" = 1'-0"



N.E.S. Inc.
619 N. Cascade Avenue, Suite 200
Colorado Springs, CO 80903
Tel. 719.471.0073
Fax 719.471.0267
www.nescolorado.com
© 2012. All Rights Reserved.



community ■ planning ■ architecture

OUTLOOK POWERS & GRINNELL

SITE DEVELOPMENT PLAN
EL PASO COUNTY, COLORADO

DATE: 05/08/2023
PROJECT MGR: JS
PREPARED BY: AA

ENTITLEMENT

ISSUE	BY	DESCRIPTION

ELEVATIONS - 36 PLEX

16
16 26

221206

P:\Evergreen Devcs, Inc\Drawings\Planning\DP\Outlook Powers, Grinnell_SDP_TITLEDLOCK.dwg [COUNTY COVER] 3/29/2023 2:10:39 PM bdownson

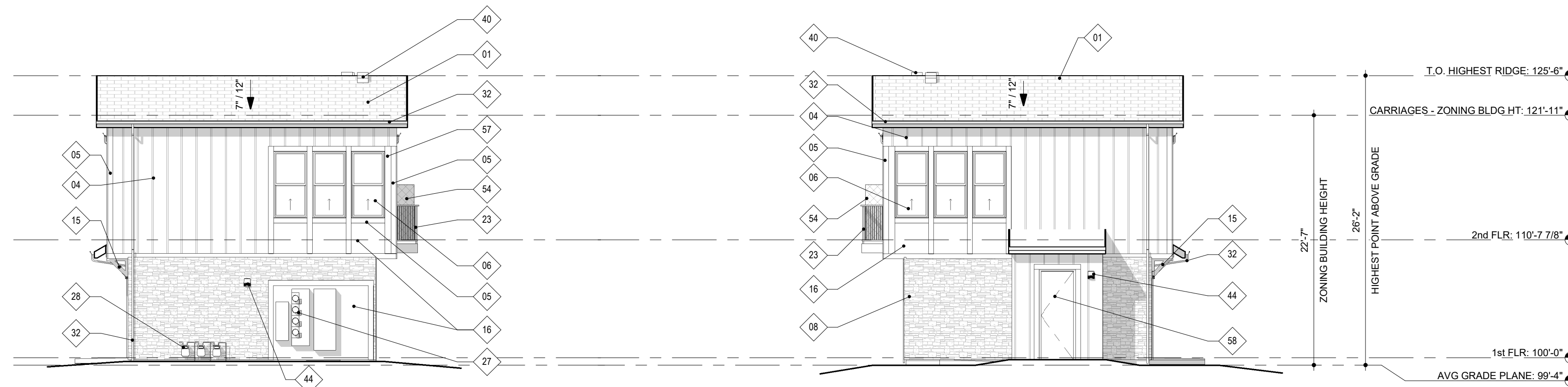
OUTLOOK POWERS & GRINNELL

EL PASO COUNTY, COLORADO

SITE DEVELOPMENT PLAN

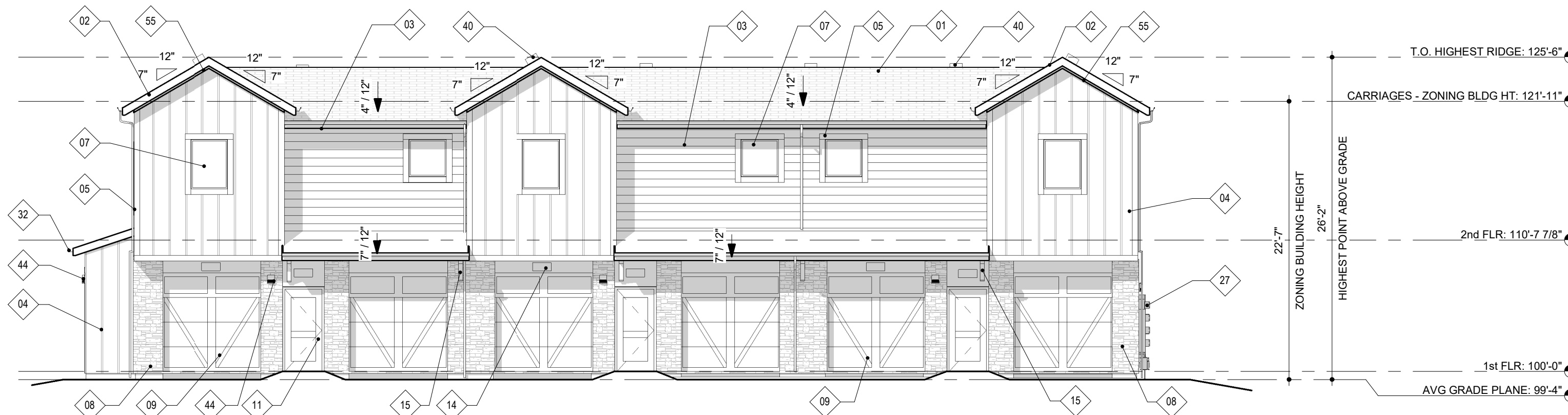


4 REAR ELEVATION - CARRIAGE HOUSE
1/8" = 1'-0"



3 RIGHT ELEVATION - CARRIAGE HOUSE
1/8" = 1'-0"

2 LEFT ELEVATION - CARRIAGE HOUSE
1/8" = 1'-0"



1 FRONT ELEVATION - CARRIAGE HOUSE
1/8" = 1'-0"

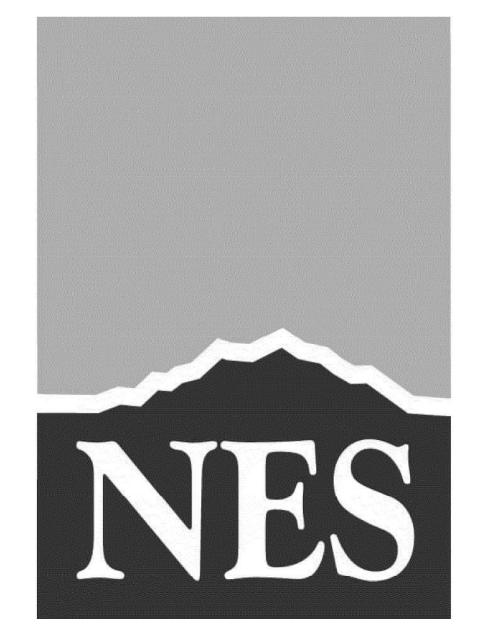
MATERIAL & FINISH LEGEND	
	8" FIBER CEMENT LAP SIDING
	FIBER CEMENT BOARD & BATTEN SIDING
	FIBER CEMENT TRIM
	ADHERED SYNTHETIC STONE VENEER
	METAL STANDING SEAM ROOF
	ARCHITECTURAL COMPOSITE ROOF

OUTLOOK AT POWERS AND GRINNELL: EVERGREEN DEVELOPMENT

	SCHEME 1	SCHEME 2	SCHEME 3
ROOF	TAMKO RUSTIC BLACK	TAMKO RUSTIC BLACK	TAMKO RUSTIC BLACK
METAL ROOF	MATTE BLACK	MATTE BLACK	MATTE BLACK
BODY 1 + TRIM	SHERWIN WILLIAMS SW 7069 IRON ORE	SHERWIN WILLIAMS SW 7069 IRON ORE	SHERWIN WILLIAMS SW 7069 IRON ORE
BODY 2	SHERWIN WILLIAMS SW 7019 GAUNTLET GRAY	SHERWIN WILLIAMS SW 2638 QUARTERSAWN OAK	SHERWIN WILLIAMS SW 6912 BROWSE BROWN
BODY 3	SHERWIN WILLIAMS SW 7063 NEBULOUS WHITE	SHERWIN WILLIAMS SW 7063 NEBULOUS WHITE	SHERWIN WILLIAMS SW 7063 NEBULOUS WHITE
STONE	SUNSET MASONRY LEDGE WINTERSKY	SUNSET MASONRY LEDGE WINTERSKY	SUNSET MASONRY LEDGE WINTERSKY
RAILINGS	CARDINAL POWDER COAT P004-BR23 BRONZE 40% GLOSS	CARDINAL POWDER COAT P004-BR23 BRONZE 40% GLOSS	CARDINAL POWDER COAT P004-BR23 BRONZE 40% GLOSS
TRIM + GARAGE	CLOPAY VALUE PLUS SERIES WHITE	CLOPAY VALUE PLUS SERIES WHITE	CLOPAY VALUE PLUS SERIES WHITE
WINDOWS	WHITE	WHITE	WHITE

NOTE: ALL BUILDINGS WILL BE PROVIDED WITH FIRE SPRINKLER PROTECTION AT ALL LEVELS

#	DESCRIPTION
01	ARCHITECTURAL COMPOSITE SHINGLE ROOF
02	5/4" X 8" PAINTED FIBER CEMENT FASCIA
03	8" FIBER CEMENT LAP SIDING
04	FIBER CEMENT BOARD & BATTEN PANEL SIDING
05	5/4" X 8" PAINTED FIBER CEMENT ACCENT TRIM
06	VINYL SINGLE-HUNG WINDOW
07	VINYL FIXED WINDOW
08	SYNTHETIC STONE VENEER SYSTEM
09	OVERHEAD GARAGE DOOR: STEEL
11	FULL-LITE EXTERIOR DOOR
14	BUILDING ADDRESS SIGNAGE
15	DECORATIVE ROOF BRACKET
16	FIBER CEMENT PANEL SIDING
23	42" TALL PAINTED METAL RAILING AT UNIT BALCONY
27	ELECTRICAL METER
28	GAS METER
31	GROUND-MOUNTED A/C CONDENSING UNIT
32	PREFINISHED METAL GUTTER AND DOWNSPOUT
40	ROOF VENT: MATCH ROOF COLOR
44	EXTERIOR LIGHTING: RE: PHOTOMETRIC PLAN
54	60" TALL PAINTED PRIVACY SCREEN AT UNIT BALCONY
55	MECHANICAL VENT
57	AWNING WINDOW
58	SILDER WINDOW



N.E.S. Inc.
619 N. Cascade Avenue, Suite 200
Colorado Springs, CO 80903
Tel. 719.471.0073
Fax 719.471.0267
www.nescolorado.com
© 2012. All Rights Reserved.



community ■ planning ■ architecture

OUTLOOK POWERS & GRINNELL

SITE DEVELOPMENT PLAN

EL PASO COUNTY, COLORADO

DATE: 05/08/2023
PROJECT MGR: JS
PREPARED BY: AA

ENTITLEMENT

ISSUE	BY	DESCRIPTION

ELEVATIONS - CARRIAGES

18
18 26

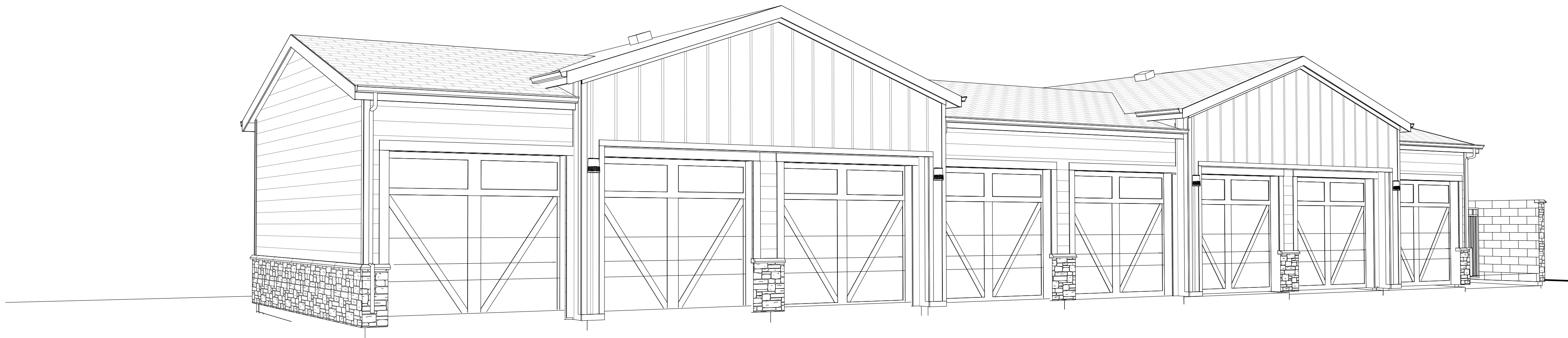
221206

P:\Evergreen Devcs, Inc\Drawings\Planning\DP\Powers_Grinnell_SDP_TITLEDLOCK.dwg [COUNTY_COVER] 3/29/2021 2:10:39 PM bowman

OUTLOOK POWERS & GRINNELL

EL PASO COUNTY, COLORADO

SITE DEVELOPMENT PLAN

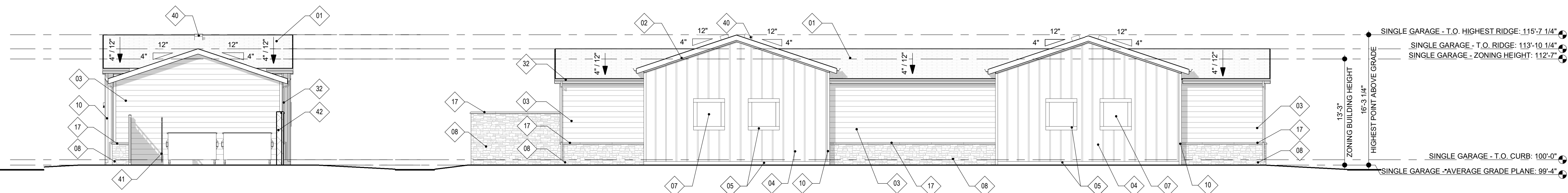


MATERIAL & FINISH LEGEND		
	ARCHITECTURAL COMPOSITE ROOF	TAMKO RUSTIC BLACK
	FIBER CEMENT TRIM	SHERWIN WILLIAMS SW 7096, IRON ORE
	FIBER CEMENT BOARD & BATTEN SIDING	SHERWIN WILLIAMS SW 7096, IRON ORE
	8" FIBER CEMENT LAP SIDING	SHERWIN WILLIAMS SW 7063, NEBULOUS WHITE
	ADHEARED SYNTHETIC STONE VENEER	SUNSET MASONRY LEDGE, WINTERSKY

OUTLOOK AT POWER AND GRINNELL: EVERGREEN DEVELOPMENT

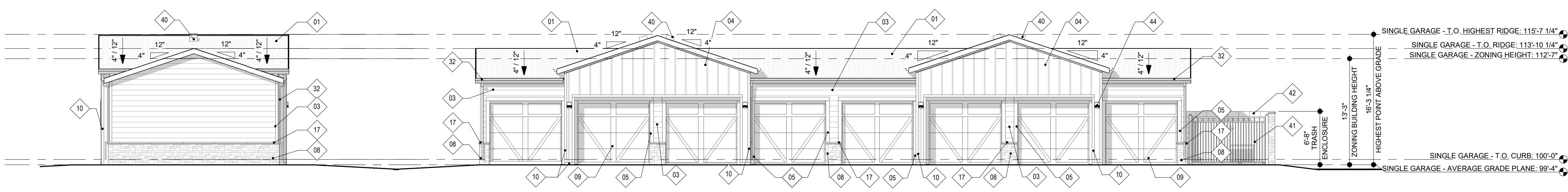
STELLA COLOR SCHEMES			
GARAGES			
ROOF	TAMKO RUSTIC BLACK	RAILINGS	CARDINAL POWDER COAT P004-BR23 BRONZE 40% GLOSS
BODY 1 + TRIM	SHERWIN WILLIAMS SW 7096 IRON ORE	GARAGE	CLOPAY VALUE PLUS SERIES WHITE
BODY 2	SHERWIN WILLIAMS SW 7063 NEBULOUS WHITE	WINDOWS	BRONZE
STONE	SUNSET MASONRY LEDGE WINTERSKY		

KEYNOTES	
#	DESCRIPTION
01	ARCHITECTURAL COMPOSITE SHINGLE ROOF
02	54" X 8" PAINTED FIBER CEMENT FASCIA
03	8" FIBER CEMENT LAP SIDING
04	FIBER CEMENT BOARD & BATTEN PANEL SIDING
05	54" X 6" PAINTED FIBER CEMENT ACCENT TRIM
07	VINYL FIXED WINDOW
08	SYNTHETIC STONE VENEER SYSTEM
09	OVERHEAD GARAGE DOOR: STEEL
10	54" X 4" PAINTED FIBER CEMENT ACCENT TRIM
17	STONE SILLCAP
32	PREFINISHED METAL GUTTER AND DOWNSPOUT
40	ROOF VENT: MATCH ROOF COLOR
41	METAL TRASH ENCLOSURE GATE
42	CMU BLOCK WALL
44	EXTERIOR LIGHTING: RE: PHOTOMETRIC PLAN



4 RIGHT ELEVATION - SINGLE GARAGE
1/8" = 1'-0"

3 REAR ELEVATION - SINGLE GARAGE
1/8" = 1'-0"



2 LEFT ELEVATION - SINGLE GARAGE
1/8" = 1'-0"

1 FRONT ELEVATION - SINGLE GARAGE
1/8" = 1'-0"

N.E.S. Inc.
619 N. Cascade Avenue, Suite 200
Colorado Springs, CO 80903
Tel. 719.471.0073
Fax 719.471.0267
www.nescolorado.com
© 2012. All Rights Reserved.

community ■ planning ■ architecture

OUTLOOK POWERS & GRINNELL

SITE DEVELOPMENT PLAN

EL PASO COUNTY, COLORADO

DATE:	05/08/2023
PROJECT MGR:	J5
PREPARED BY:	AA

ENTITLEMENT

ISSUE	BY	DESCRIPTION

SINGLE GARAGE ELEVATIONS

SHEET NUMBER

20

20 26

PLAN FILE # 221206

P:\Evergreen Devco, Inc\Drawings\Planning\DP\Outlook Powers, Grinnell - SD3 - TITLE BLOCK.dwg [COUNTY COVER] 3/29/2021 2:10:39 PM bawmson

OUTLOOK POWERS & GRINNELL

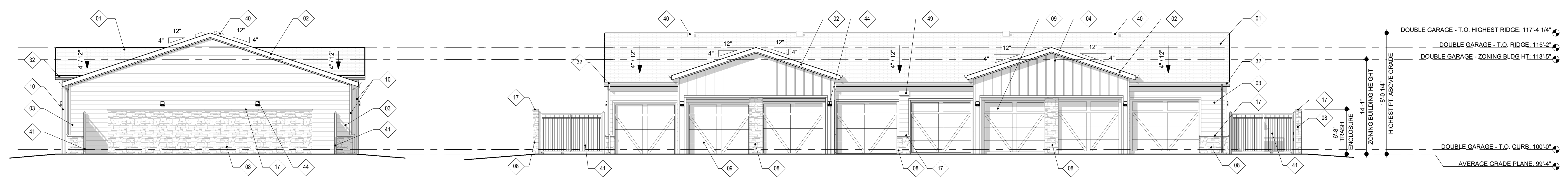
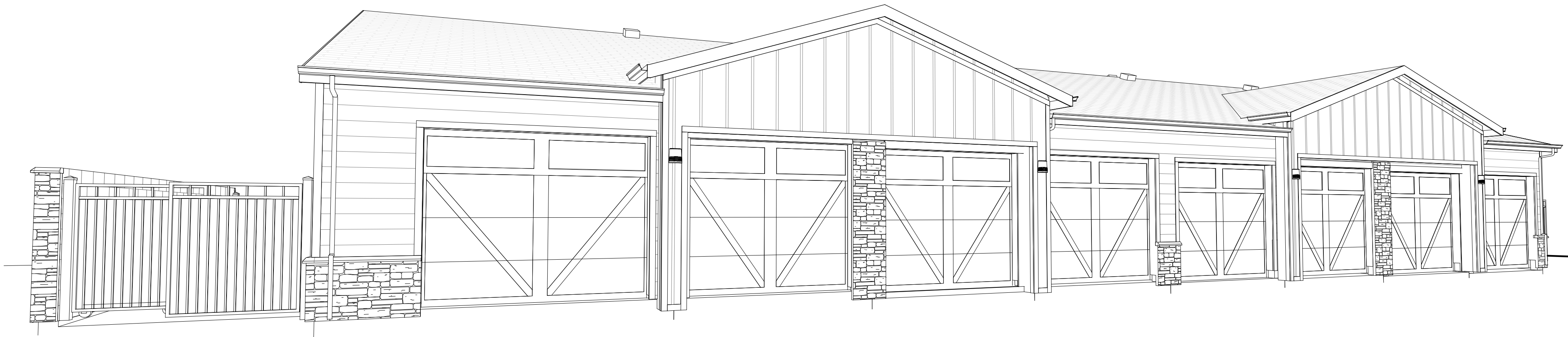
EL PASO COUNTY, COLORADO

SITE DEVELOPMENT PLAN

MATERIAL & FINISH LEGEND		
	ARCHITECTURAL COMPOSITE ROOF	TAMKO RUSTIC BLACK
	FIBER CEMENT TRIM	SHERWIN WILLIAMS SW 7096, IRON ORE
	FIBER CEMENT BOARD & BATTEN SIDING	SHERWIN WILLIAMS SW 7096, IRON ORE
	8' FIBER CEMENT LAP SIDING	SHERWIN WILLIAMS SW 7063, NEBULOUS WHITE
	ADHEARED SYNTHETIC STONE VENEER	SUNSET MASONRY LEDGE, WINTERSKY

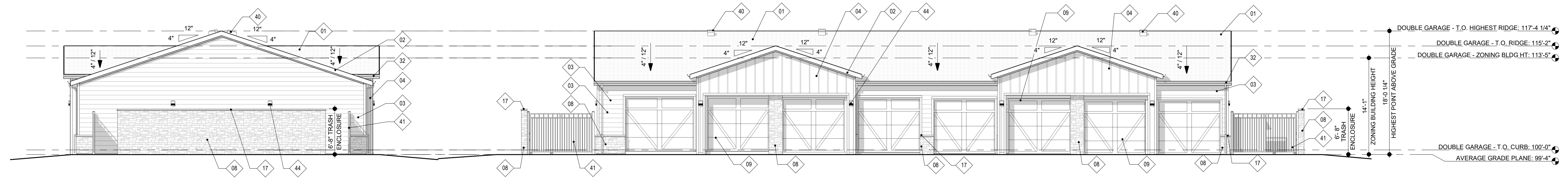
OUTLOOK AT POWER AND GRINNELL: EVERGREEN DEVELOPMENT			
STELLA COLOR SCHEMES			
GARAGES			
ROOF	TAMKO RUSTIC BLACK	RAILINGS	CARDINAL POWDER COAT P004-BR23 BRONZE 40% GLOSS
BODY 1 + TRIM	SHERWIN WILLIAMS SW 7096 IRON ORE	GARAGE	CLOPAY VALLIE PLUS SERIES WHITE
BODY 2	SHERWIN WILLIAMS SW 7063 NEBULOUS WHITE	WINDOWS	BRONZE
STONE	SUNSET MASONRY LEDGE WINTERSKY		

KEYNOTES	
#	DESCRIPTION
01	ARCHITECTURAL COMPOSITE SHINGLE ROOF
02	54" X 8" PAINTED FIBER CEMENT FASCIA
03	8' FIBER CEMENT LAP SIDING
04	FIBER CEMENT BOARD & BATTEN PANEL SIDING
08	SYNTHETIC STONE VENEER SYSTEM
09	OVERHEAD GARAGE DOOR: STEEL
10	54" X 4" PAINTED FIBER CEMENT ACCENT TRIM
17	STONE SILLCAP
32	PREFINISHED METAL GUTTER AND DOWNSPOUT
40	ROOF VENT; MATCH ROOF COLOR
41	METAL TRASH ENCLOSURE GATE
44	EXTERIOR LIGHTING; RE: PHOTOMETRIC PLAN
49	BUILDING TENANT SIGNAGE



4 RIGHT ELEVATION - DOUBLE GARAGE
1/8" = 1'-0"

3 REAR ELEVATION - DOUBLE GARAGE
1/8" = 1'-0"



2 LEFT ELEVATION - DOUBLE GARAGE
1/8" = 1'-0"

1 FRONT ELEVATION - DOUBLE GARAGE
1/8" = 1'-0"

N.E.S. Inc.
619 N. Cascade Avenue, Suite 200
Colorado Springs, CO 80903
Tel. 719.471.0073
Fax 719.471.0267
www.nescolorado.com
© 2012. All Rights Reserved.

community ■ planning ■ architecture

OUTLOOK POWERS & GRINNELL

SITE DEVELOPMENT PLAN

EL PASO COUNTY, COLORADO

DATE: 05/08/2023
PROJECT MGR: JS
PREPARED BY: AA

ENTITLEMENT

ISSUE #	BY	DESCRIPTION

DOUBLE GARAGE ELEVATIONS

21
21 26

PLAN FILE # 221206

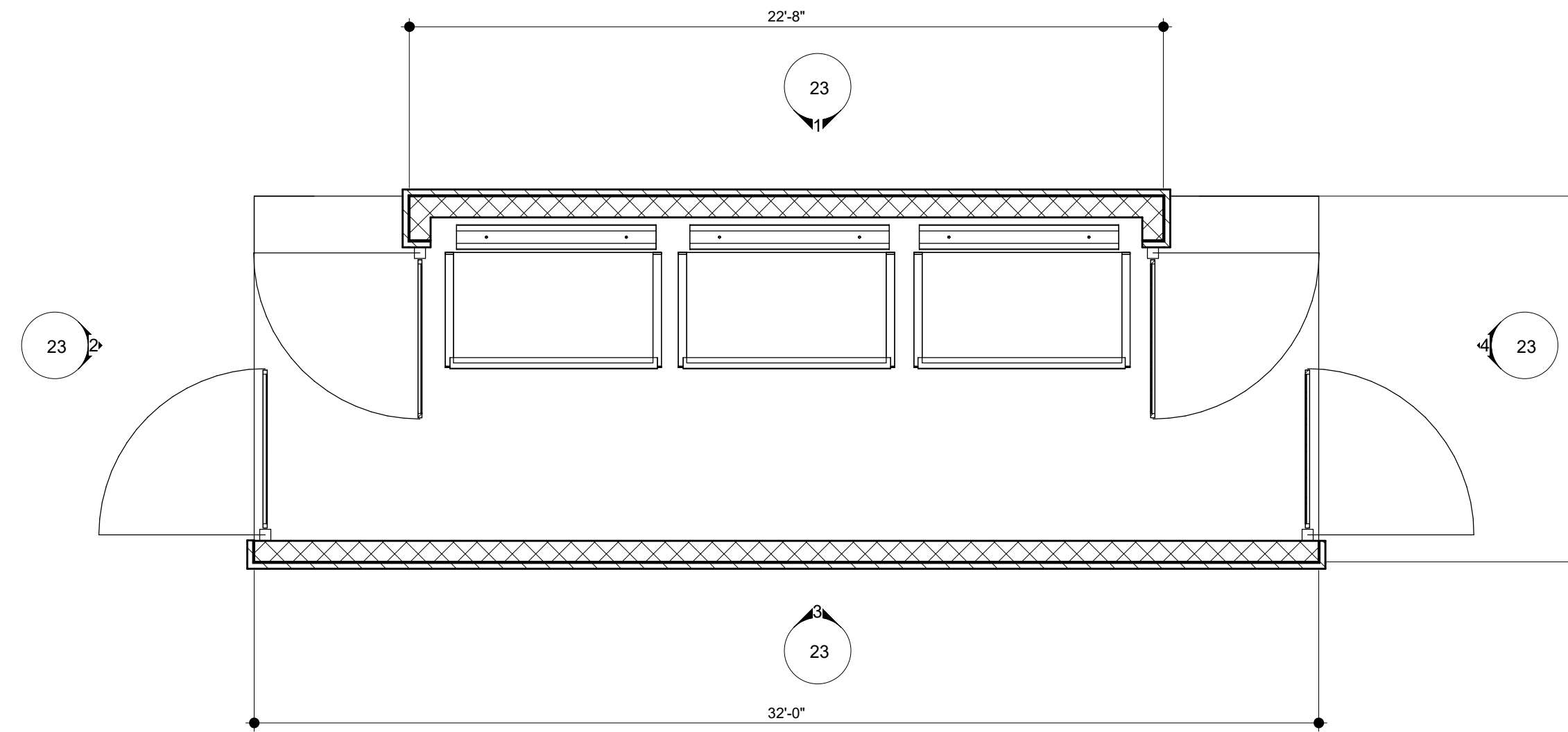
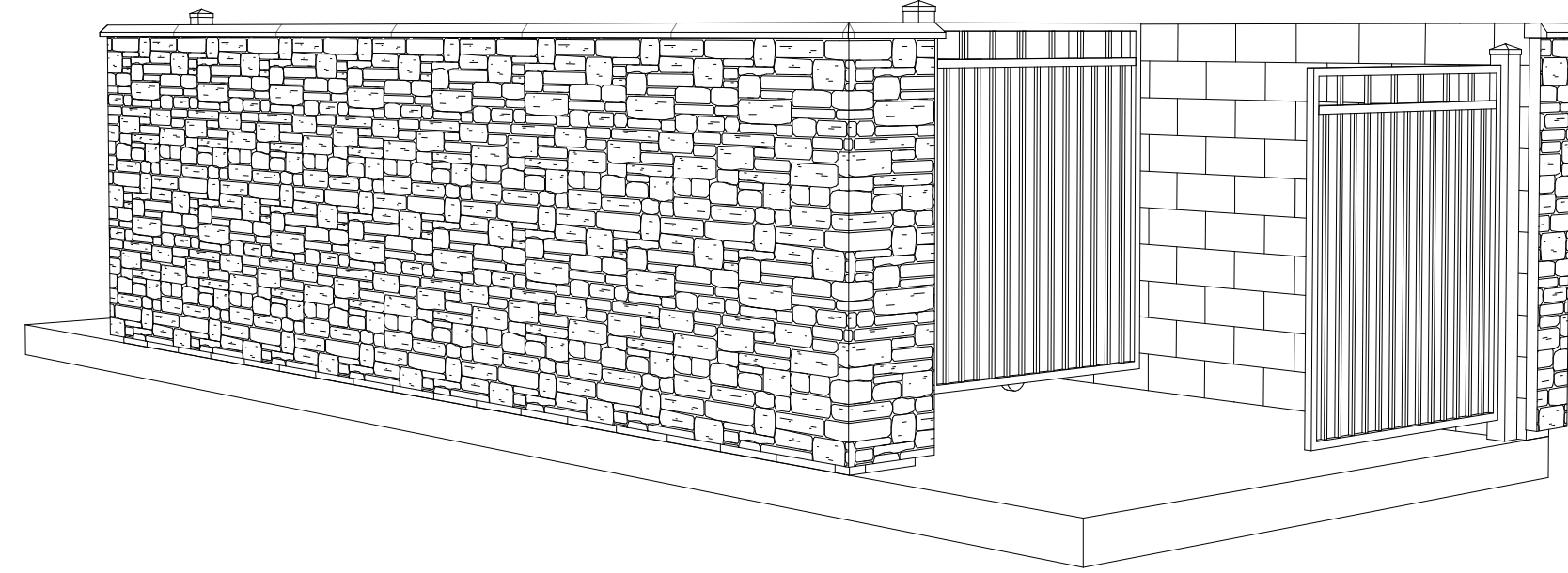
P:\Evergreen Devcs, Inc\Drawings\Planning\DP\Outlook Powers, Grinnell_SDP_TITLEDLOCK.dwg [COUNTY_COVER], 3/29/2021 2:10:39 PM bawmson

OUTLOOK POWERS & GRINNELL

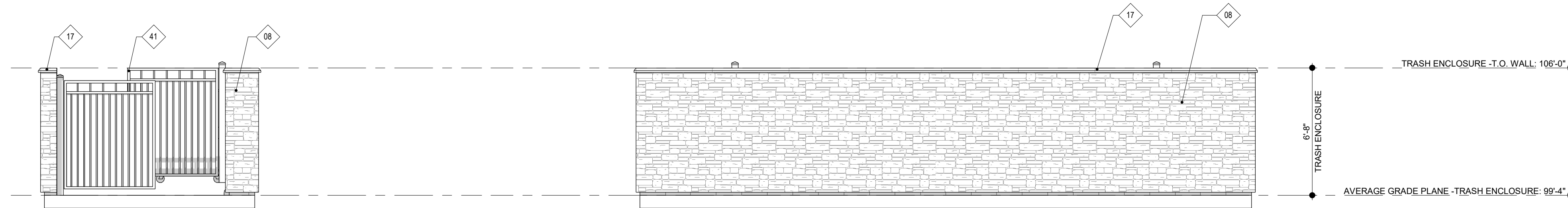
EL PASO COUNTY, COLORADO

SITE DEVELOPMENT PLAN

KEYNOTES	
#	DESCRIPTION
08	SYNTHETIC STONE VENEER SYSTEM
17	STONE SILLCAP
41	METAL TRASH ENCLOSURE GATE

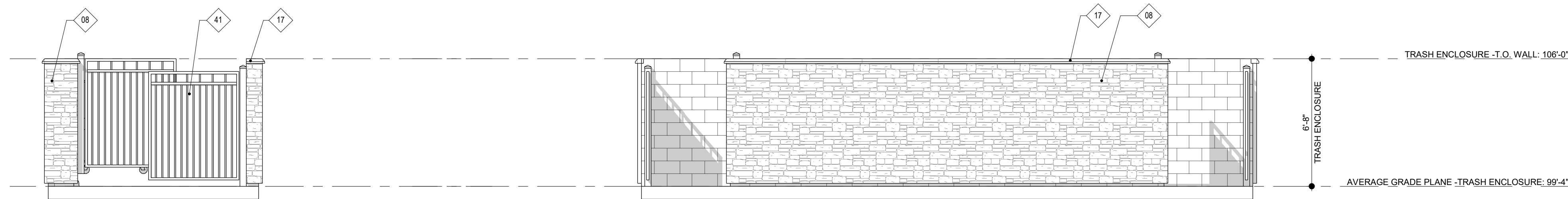


5 FLOOR PLAN -TRASH ENCLOSURE
1/4" = 1'-0"



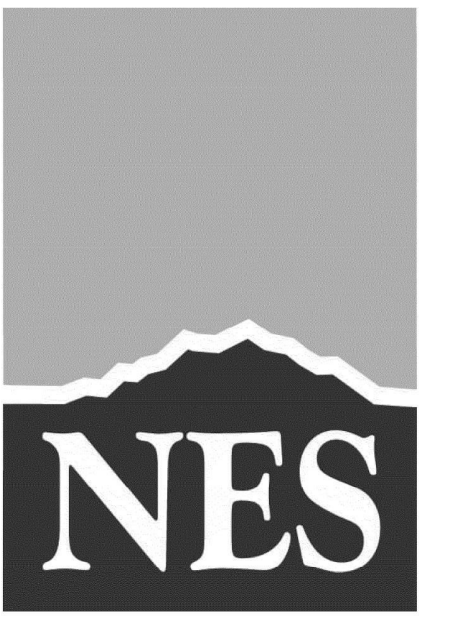
4 RIGHT ELEVATION -TRASH ENCLOSURE
1/4" = 1'-0"

3 REAR ELEVATION -TRASH ENCLOSURE
1/4" = 1'-0"

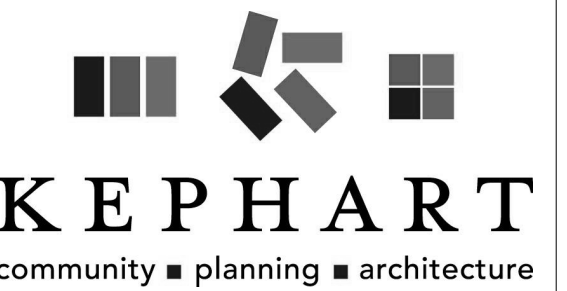


2 LEFT ELEVATION -TRASH ENCLOSURE
1/4" = 1'-0"

1 FRONT ELEVATION -TRASH ENCLOSURE
1/4" = 1'-0"



N.E.S. Inc.
619 N. Cascade Avenue, Suite 200
Colorado Springs, CO 80903
Tel. 719.471.0073
Fax 719.471.0267
www.nescolorado.com
© 2012. All Rights Reserved.



IN ASSOCIATION WITH

OUTLOOK POWERS & GRINNELL

SITE DEVELOPMENT PLAN
EL PASO COUNTY, COLORADO

PROJECT INFO DATE: 05/08/2023
PROJECT MGR: JS
PREPARED BY: AA

STAMP

ENTITLEMENT

ISSUE INFO

ISSUE	BY	DESCRIPTION
ISSUE.1		

ISSUE / REVISION

ELEVATIONS AND FLOOR PLAN - TRASH ENCLOSURE

SHEET TITLE

SHEET NUMBER

23

23 26

PLAN FILE #

221206