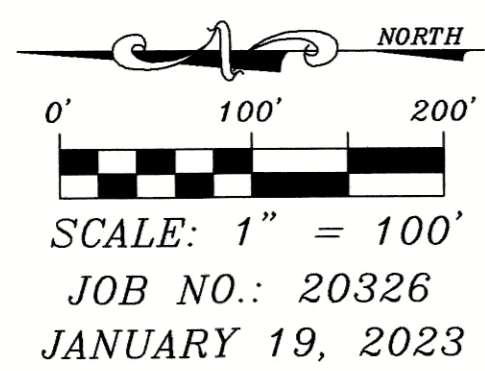
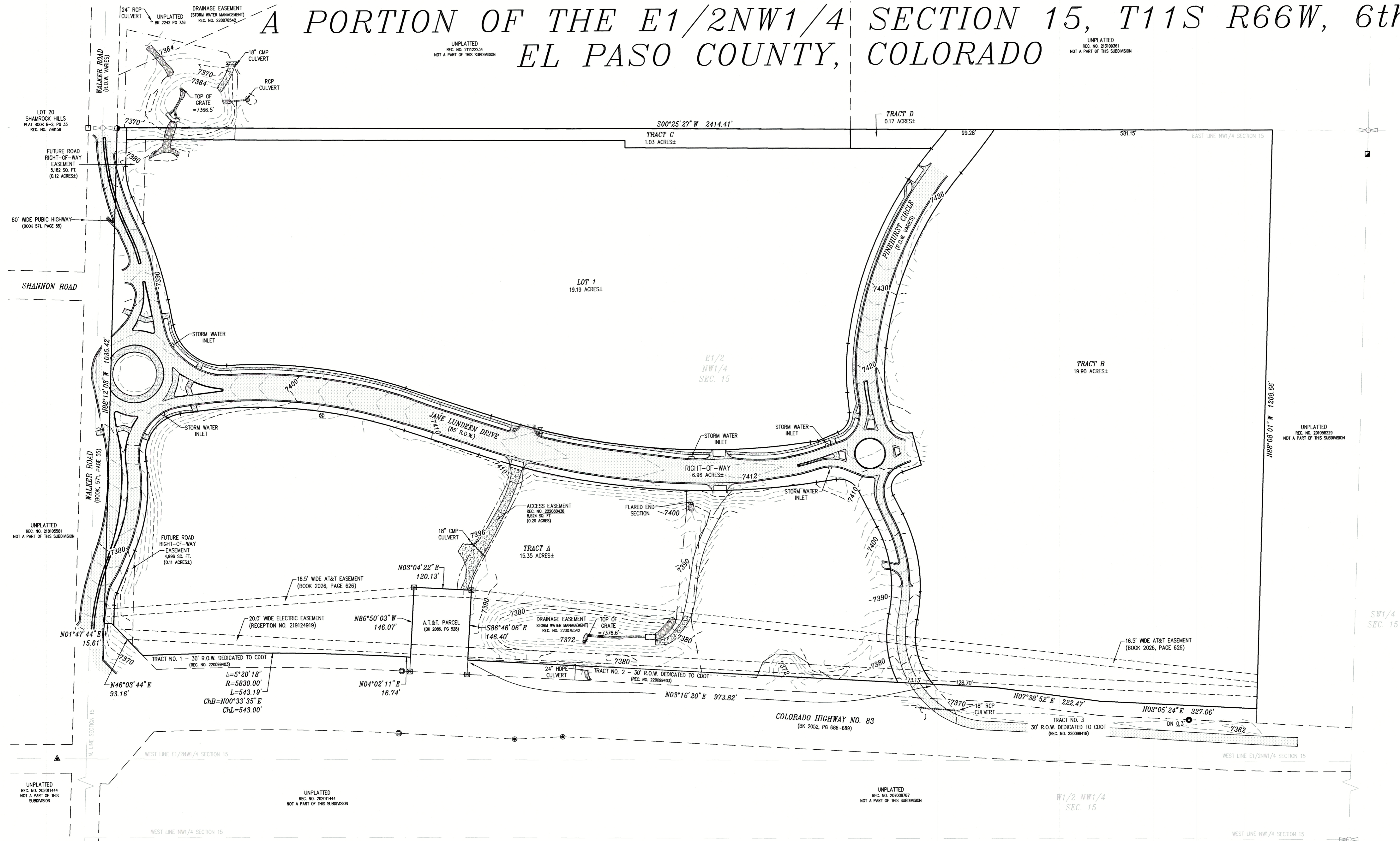


# AS BUILT

## MONUMENT ACADEMY ROAD AND DRAINAGE IMPROVEMENTS

### A PORTION OF THE E1/2NW1/4 SECTION 15, T11S R66W, 6th P.M.

### EL PASO COUNTY, COLORADO

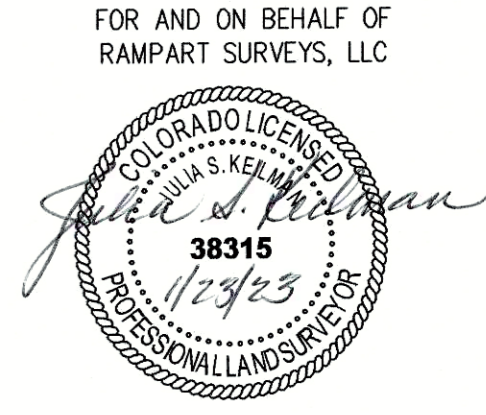


- LEGEND:**
- FOUND REBAR AND ORANGE CAP STAMPED "T WAGNER PLS 14666"
  - ⊙ FOUND 2-1/2" BRASS CAP C.D.O.T. R.O.W.
  - ⊠ FOUND 4"x4" CONCRETE POST
  - FOUND 3" BRASS CAP STAMPED "COLO. DEPT. OF HIGHWAYS R.O.W. MARKER STA. 143+57.2"
  - ▲ FOUND 2-1/2" ALUMINUM CAP STAMPED "60FT WC PLS 30118"
  - ⬆ FOUND 2-1/2" ALUMINUM CAP STAMPED "RAMPART PLS 38560 30FT WC"
  - FOUND 2-1/2" ALUMINUM CAP STAMPED "30FT WC PLS 30118"
  - FOUND 1" O.D. IRON PIPE
  - ⊕ FOUND 1/2" REBAR (NO CAP)
  - ⊖ FOUND 1/4" CORNER
  - ▨ RIP RAP
  - ▭ CONCRETE
  - ▭ ASPHALT
  - ▭ GRAVEL

PROJECT BENCHMARK: BENCHMARK 4 BB RESET 1984, NAVD 88 DATUM, ELEV.=7570.80'. FOUND BRASS CAP IN CONCRETE AT THE INTERSECTION OF HIGHWAY 83 AND HODGEN ROAD.

NOTE: ALL LINEAL UNITS DEPICTED ON THIS AS-BUILT ARE U.S. SURVEY FEET.

THIS PAGE IS FOR TOPOGRAPHIC INFORMATION ONLY. ALL OTHER INFORMATION IS FOR LOCATION REFERENCE.



**AS-BUILT MONUMENT ACADEMY ROAD AND DRAINAGE IMPROVEMENTS, EL PASO COUNTY, COLORADO**

---

DRAWING: 20326ASBT<sub>topo</sub>.DWG PAGE 1 OF 1

C:\Users\Rampart Surveys\Dropbox\2023\20326 ASB Topo.dwg, 1/23/2023 3:53:53 PM