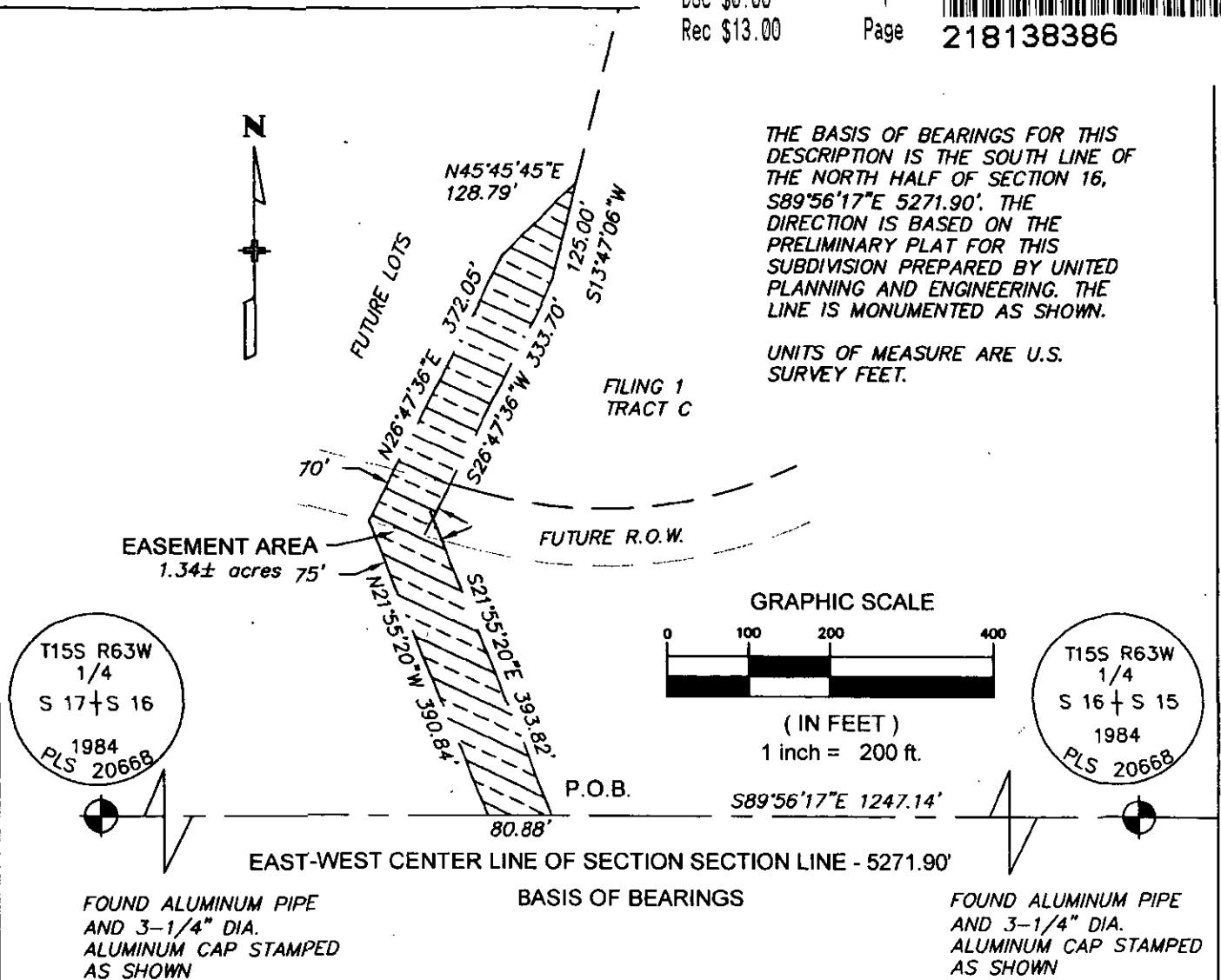




THE BASIS OF BEARINGS FOR THIS DESCRIPTION IS THE SOUTH LINE OF THE NORTH HALF OF SECTION 16, S89°56'17"E 5271.90'. THE DIRECTION IS BASED ON THE PRELIMINARY PLAT FOR THIS SUBDIVISION PREPARED BY UNITED PLANNING AND ENGINEERING. THE LINE IS MONUMENTED AS SHOWN.

UNITS OF MEASURE ARE U.S. SURVEY FEET.



**EASEMENT DESCRIPTION:**

A PORTION OF THE NORTH HALF OF SECTION 16, TOWNSHIP 15 SOUTH, RANGE 63 WEST OF THE 6TH P.M., EL PASO COUNTY, COLORADO BEING MORE PARTICULARLY DESCRIBED AS FOLLOWS:

BEGINNING AT A POINT ON THE SOUTH LINE OF THE NORTH HALF OF SAID SECTION 16, FROM WHENCE THE SOUTHEAST CORNER OF THE NORTH HALF BEARS S89°56'17"E A DISTANCE OF 1247.14 FEET;

THENCE N89°56'17"W ON SAID SOUTH LINE A DISTANCE OF 80.88 FEET;

THENCE N21°55'20"W A DISTANCE OF 390.84 FEET;

THENCE N26°47'36"E OF 372.05 FEET;

THENCE N45°45'45"E A DISTANCE OF 128.79 FEET;

THENCE S13°47'06"W A DISTANCE OF 125.00 FEET;

THENCE S26°47'36"E OF 333.70 FEET;

THENCE S21°55'20"W A DISTANCE OF 393.82 FEET TO THE POINT OF BEGINNING.

THE DESCRIBED TRACT CONTAINS 1.34 ACRES, MORE OR LESS.

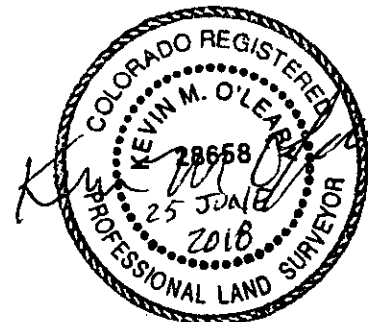


EXHIBIT A  
SILVERADO RANCH  
DRAINAGE OVERFLOW  
SILVERADO HILL LOOP

DRAWN BY  
SCALE 1"=200'  
DATE 4/25/18  
DRAWN BY  
CHECKED BY  
PROJECT 1000

LWA LAND SURVEYING, INC.  
953 E. FILLMORE STREET  
COLORADO SPRINGS, CO 80907  
TELEPHONE (719) 636-5179 FAX (719) 636-5199

REVISIONS: