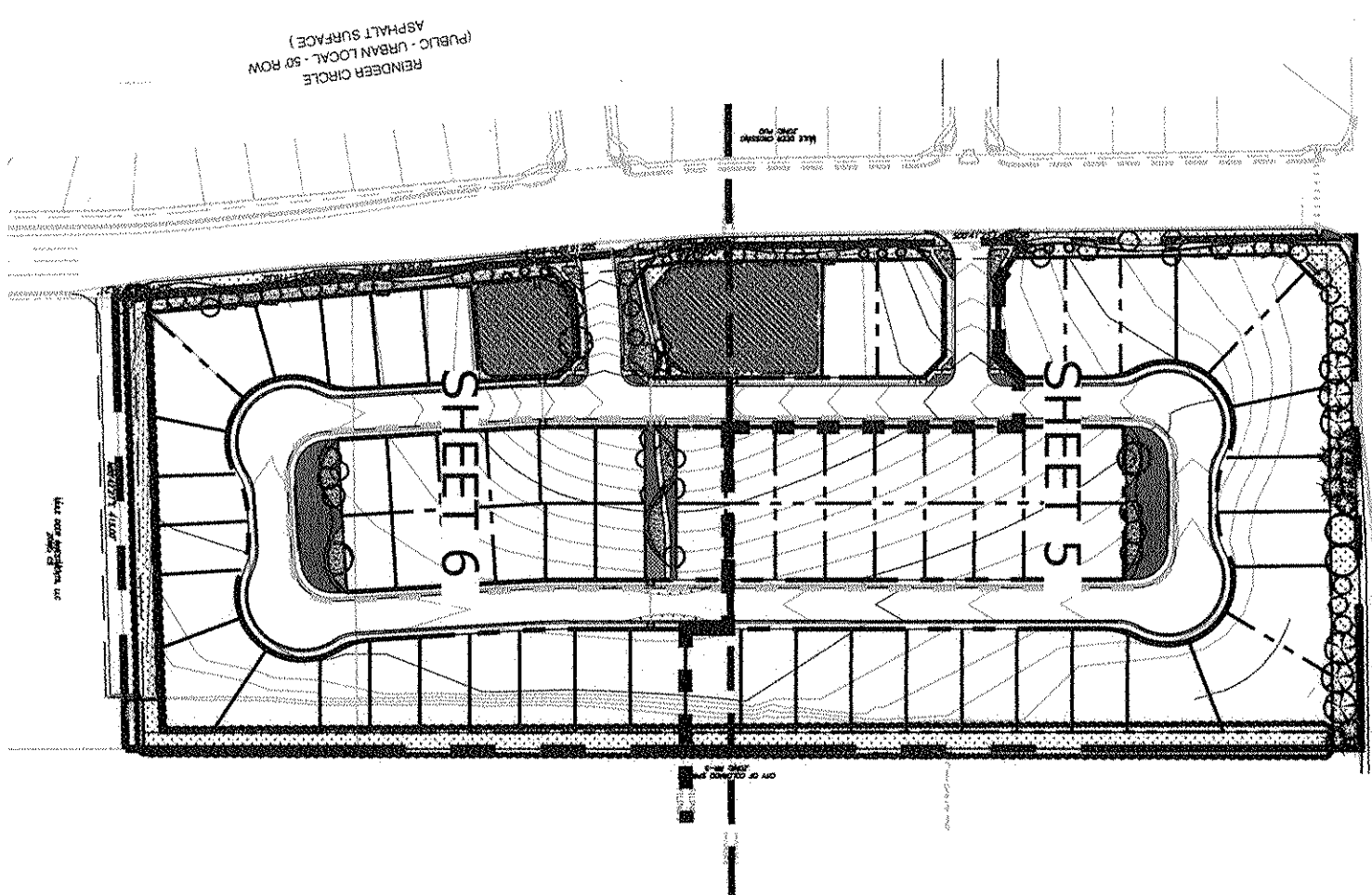




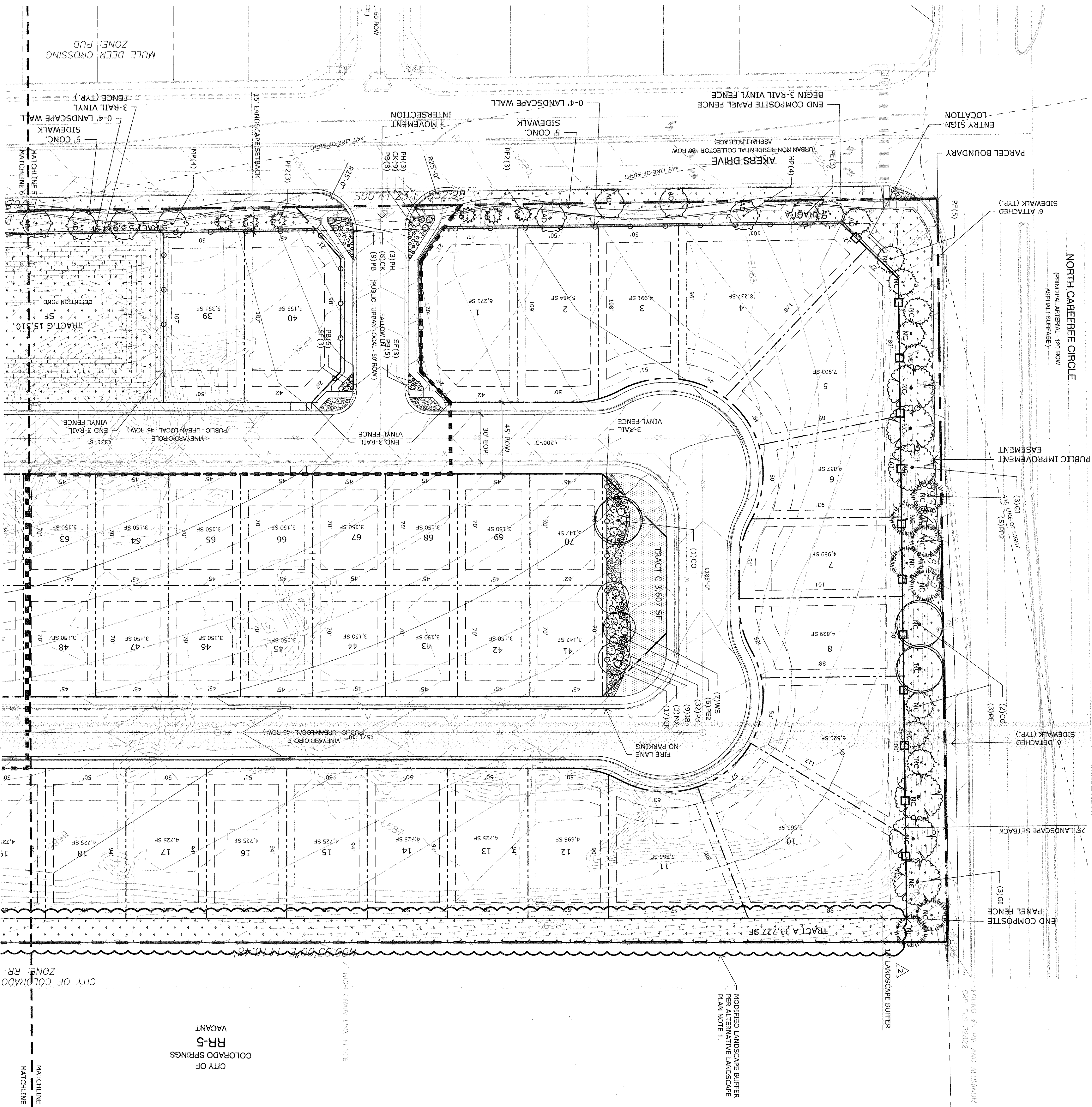


KEY MAP



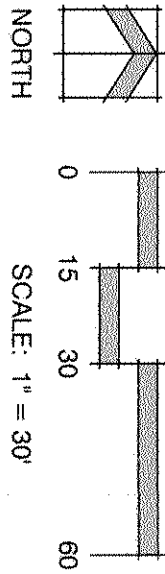
GROUNDPLANE LEGEND

- 2020-05-28 16:48
- 2-4" COBBLE
  - ARKANSAS TAN RIVER ROCK
  - NATIVE SEED MIX  
LOW GROWING SEED MIX  
SEEDING RATE: 50 lbs/acre
  - SOD
  - KENTUCKY BLUEGRASS
  - MULCH
  - SHREDED CEDAR MULCH
  - ROCKMULCH
  - 1-1.5" SADDLEBACK SWIRL

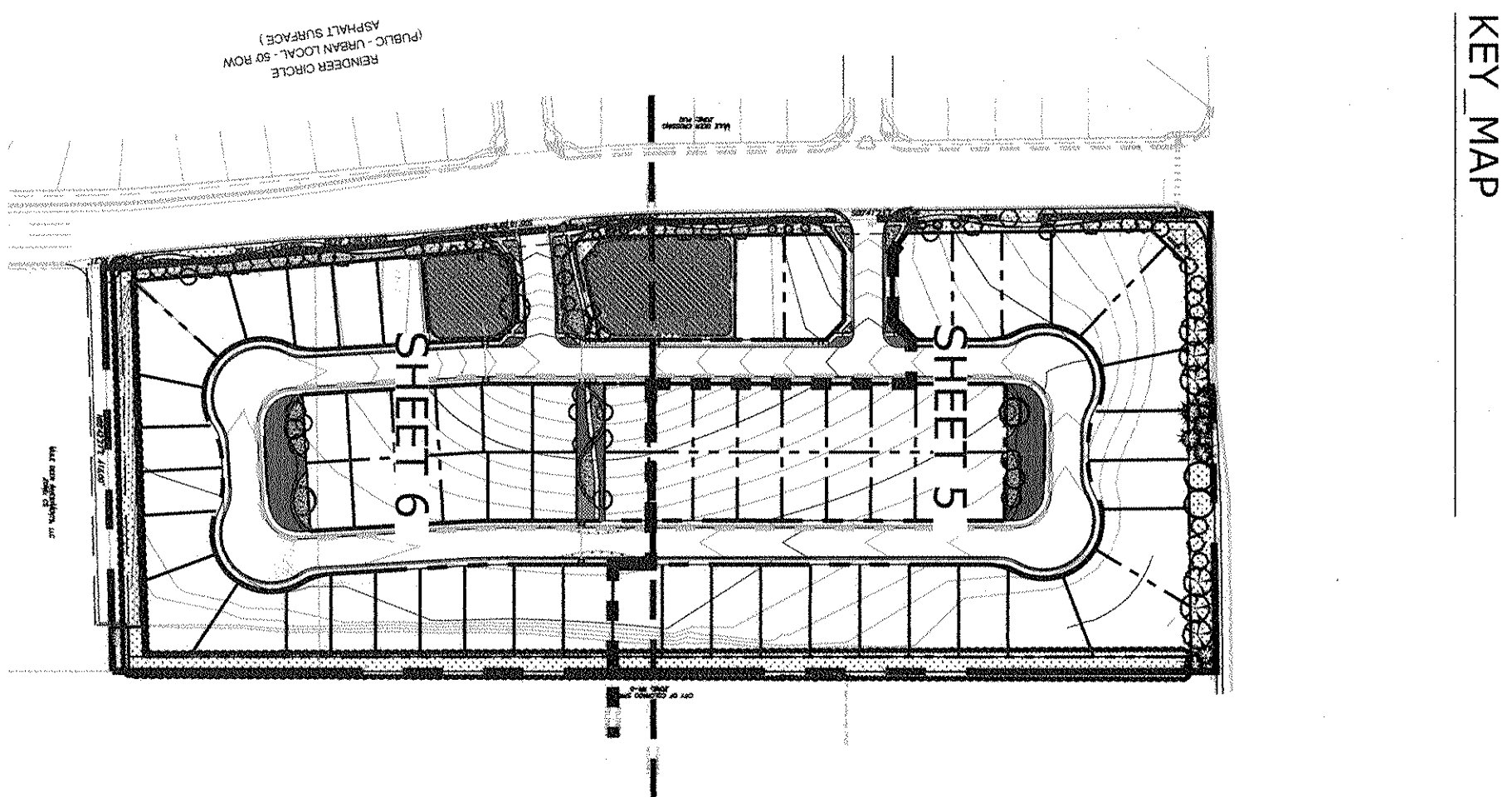
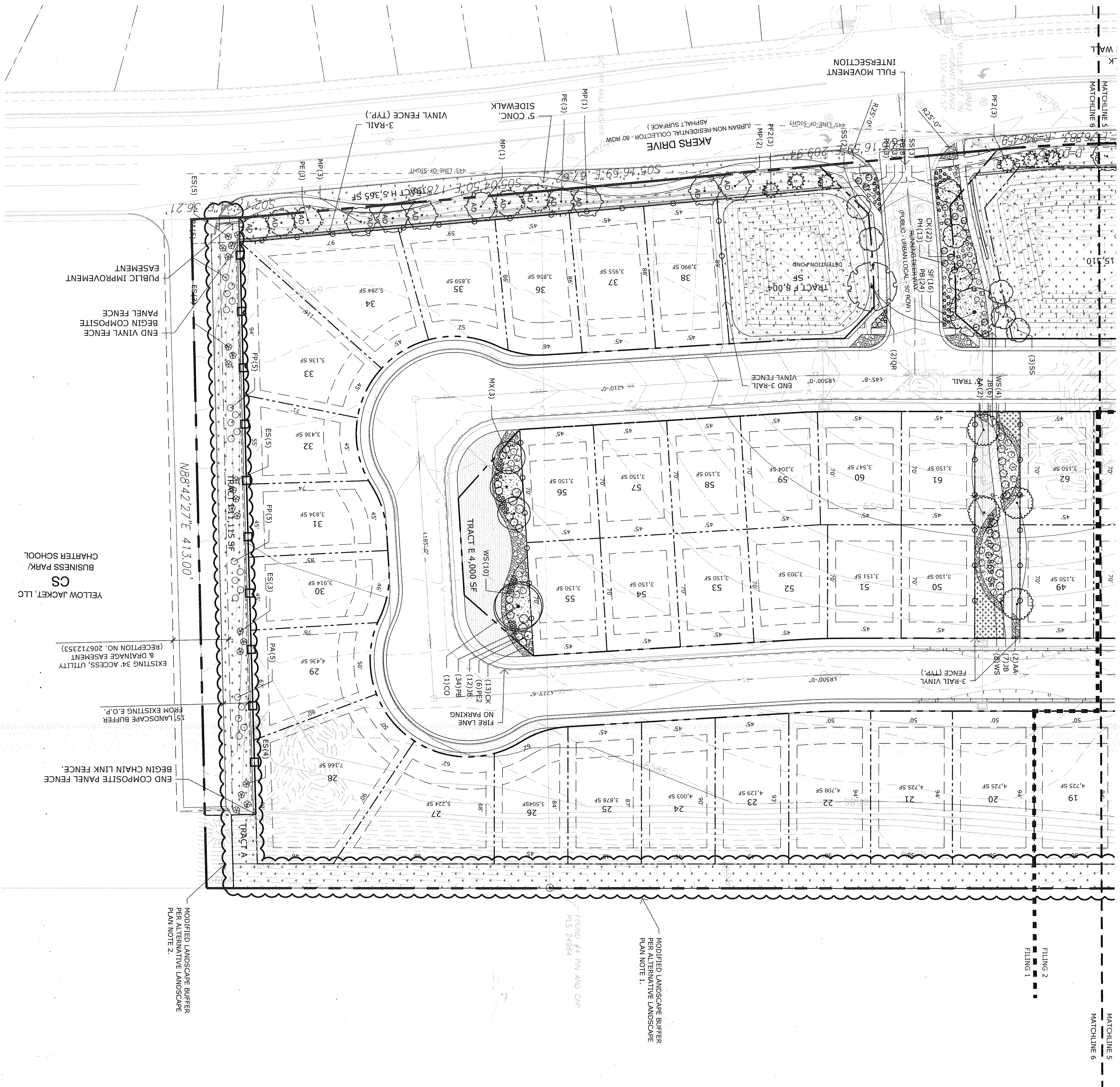



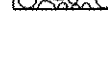
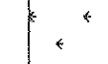
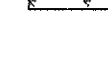

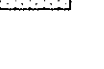



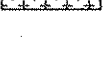

CITY OF  
COLORADO SPRINGS  
RR-5  
VACANT

220105071  
7-20-2020

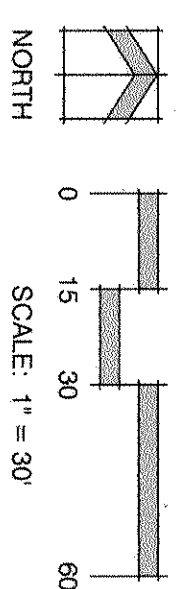







GROUNDPLANE LEGEND	
	2-4" COBBLE
	ARKANSAS TAN RIVER ROCK
	NATIVE SEED
	ARKANSAS VALLEY - LOW GROW SEED MIX
	SEEDING RATE: 50 lbs/acre
	SOD
	KENTUCKY BLUEGRASS
	MULCH
	SHREDED CEDAR MULCH
	ROCKMULCH
	1-1.5" SADDLEBACK SWIRL

220105691  
7-20-2020



<p><b>Land Planning Landscape Architecture Urban Design</b></p>  <p>N.E.S., Inc. 619 N. Cascade Avenue, Suite 200 Colorado Springs, CO 80903 Tel. 719.471.0073 Fax 719.471.0267 <a href="http://www.nescolorado.com">www.nescolorado.com</a> © 2012. All Rights Reserved.</p>						<p>PLANNER / LANDSCAPE ARCHITECT</p>						<p>IN ASSOCIATION WITH</p>						<p>THE GARDENS AT NORTH CAREFREE</p> <p>PUD DEVELOPMENT/ PRELIMINARY PLAN AMENDMENT</p> <p>El Paso County, CO</p>						<p>DATE: 5-28-20 PROJECT MGR: A. BARLOW PREPARED BY: B. SWENSON</p>						<p>SERIAL</p>						<p>ISSUE INFO</p>						<p>ISSUE / REVISION</p>						<p>SHEET TITLE</p> <p><b>FINAL LANDSCAPE PLAN</b></p>						<p>SHEET NUMBER</p> <p><b>6</b></p> <p>OF 8</p>						<p>PLAN FILE #</p> <p>PUDSP-18-004</p>					
--	--	--	--	--	--	--------------------------------------	--	--	--	--	--	----------------------------	--	--	--	--	--	---	--	--	--	--	--	---	--	--	--	--	--	---------------	--	--	--	--	--	-------------------	--	--	--	--	--	-------------------------	--	--	--	--	--	---	--	--	--	--	--	---	--	--	--	--	--	--	--	--	--	--	--