

INDEX OF SHEETS		SHEET No.
TS01	TITLE SHEET	1
GN01	GENERAL NOTES	2
GEC01	GRADING & EROSION CONTROL PLAN	3
ECN01-ECN02	EROSION CONTROL DETAILS	4-5



Know what's below.
Call before you dig.

TRAILS AT ASPEN RIDGE - STOCKPILE

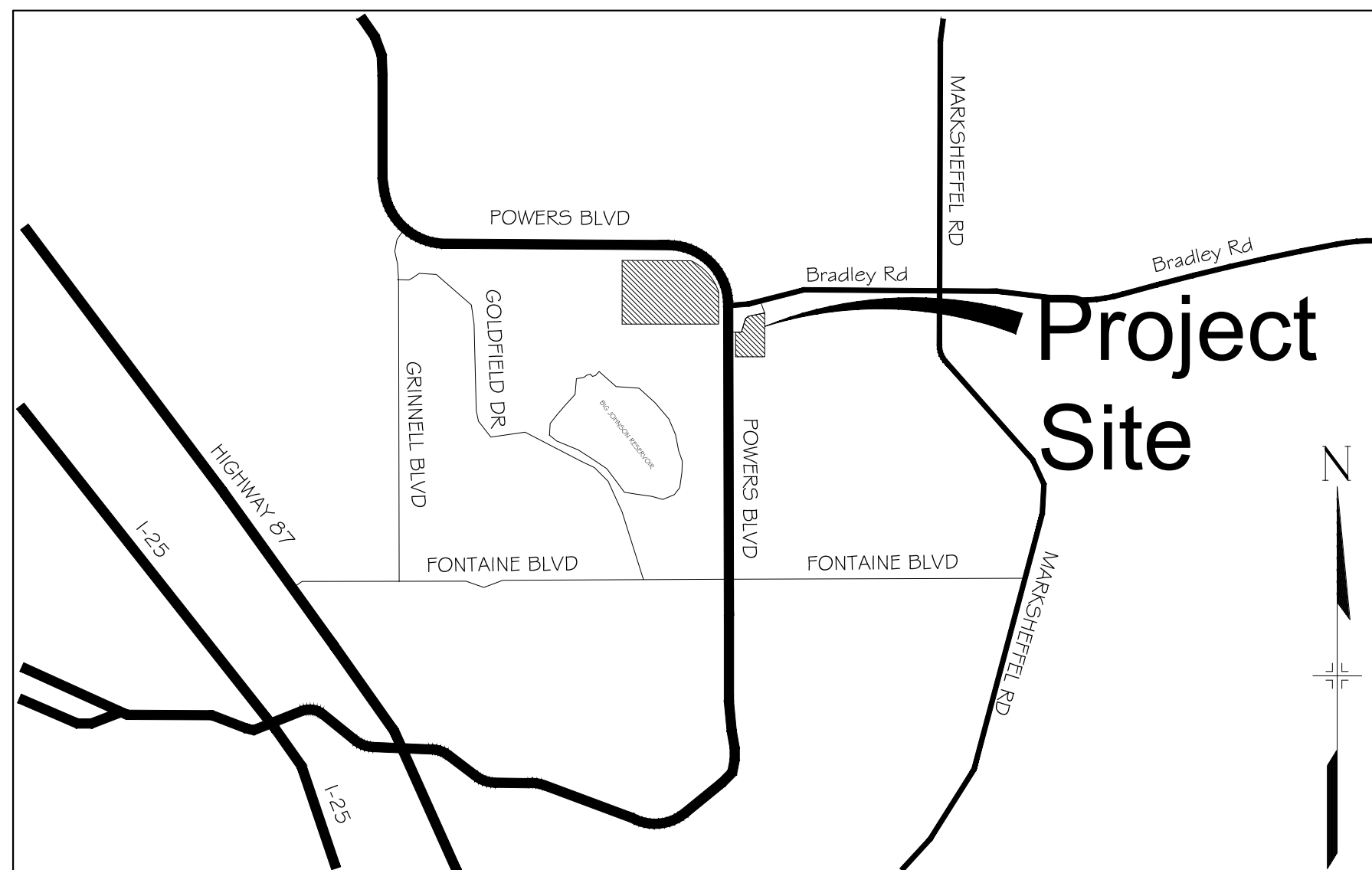
COLORADO SPRINGS, COLORADO

GRADING & EROSION CONTROL PLANS

MAY 2023

EPC STORMWATER REVIEW COMMENTS
IN ORANGE BOXES WITH BLACK TEXT

Will need signatures for commercial site and owners on west side of Powers, as grading operations will be taking part on their property.



VICINITY MAP

N.T.S.

OWNER/DEVELOPER	COLA, LLC 555 MIDDLE CREEK PARKWAY, SUITE 380 COLORADO SPRINGS, CO 80921 (719) 382-9433
CIVIL ENGINEER	MATRIX DESIGN GROUP 2435 RESEARCH PARKWAY, SUITE 300 COLORADO SPRINGS, CO 80920 NICOLE SCHANEL, (719) 659 6141
WATER & SANITARY SEWER	WIDEFIELD WATER AND SANITATION DISTRICT 8495 FONTAINE BOULEVARD COLORADO SPRINGS, CO 80925 ROBERT BANNISTER, (719) 390-7111
ELECTRIC	MOUNTAINVIEW ELECTRIC ASSOCIATION (719) 495-2283
GAS	COLORADO SPRINGS UTILITIES 1521 HANCOCK EXPRESSWAY COLORADO SPRINGS, CO MARY HOAGLUND (719) 668-4083
STREET	EL PASO COUNTY PUBLIC SERVICES DEPARTMENT (719) 520-6460
DRAINAGE	EL PASO COUNTY PUBLIC SERVICES DEPARTMENT (719) 520-6460
FIRE DEPARTMENT	SECURITY FIRE DEPARTMENT 400 SECURITY BOULEVARD SECURITY, CO 80911 (719) 392-7121

OWNER'S STATEMENT:

I, THE OWNER/DEVELOPER HAVE READ AND COMPLY WITH THE REQUIREMENTS OF THE GRADING AND EROSION CONTROL PLAN.

TIM BUSCHAR _____ DATE
DIRECTOR OF LAND ACQUISITION AND DEVELOPMENT

ENGINEER'S STATEMENT:

THIS GRADING AND EROSION CONTROL PLAN WAS PREPARED UNDER MY DIRECTION AND SUPERVISION AND IS CORRECT TO THE BEST OF MY KNOWLEDGE AND BELIEF. SAID PLAN HAS BEEN PREPARED ACCORDING TO THE CRITERIA ESTABLISHED BY THE COUNTY FOR GRADING AND EROSION CONTROL PLANS. I ACCEPT RESPONSIBILITY FOR ANY LIABILITY CAUSED BY ANY NEGLIGENT ACTS, ERRORS OR OMISSIONS ON MY PART IN PREPARING THIS REPORT.

NICOLE SCHANEL, PE #52434 _____ DATE

EL PASO COUNTY:

COUNTY PLAN REVIEW IS PROVIDED ONLY FOR GENERAL CONFORMANCE WITH COUNTY DESIGN CRITERIA. THE COUNTY IS NOT RESPONSIBLE FOR THE ACCURACY AND ADEQUACY OF THE DESIGN, DIMENSIONS, AND/OR ELEVATIONS WHICH SHALL BE CONFIRMED AT THE JOB SITE. THE COUNTY THROUGH THE APPROVAL OF THIS DOCUMENT ASSUMES NO RESPONSIBILITY FOR COMPLETENESS AND/OR ACCURACY OF THIS DOCUMENT.

FILED IN ACCORDANCE WITH THE REQUIREMENTS OF THE EL PASO COUNTY LAND DEVELOPMENT CODE, DRAINAGE CRITERIA MANUAL, VOLUMES 1 AND 2, AND ENGINEERING CRITERIA MANUAL AS AMENDED.

IN ACCORDANCE WITH ECM SECTION 1.12, THESE CONSTRUCTION DOCUMENTS WILL BE VALID FOR CONSTRUCTION FOR A PERIOD OF 2 YEARS FROM THE DATE SIGNED BY THE EL PASO COUNTY ENGINEER. IF CONSTRUCTION HAS NOT STARTED WITHIN THOSE 2 YEARS, THE PLANS WILL NEED TO BE RESUBMITTED FOR APPROVAL, INCLUDING PAYMENT OF REVIEW FEES AT THE PLANNING AND COMMUNITY DEVELOPMENT DIRECTORS DISCRETION.

JOSHUA PALMER, P.E. _____ DATE
COUNTY ENGINEER / ECM ADMINISTRATOR

Add text:
EPC's EDARP File Number: CDR2312

REFERENCE DRAWINGS	No.	DATE	DESCRIPTION	BY
X-Title-GEC	###	###	###	###
X-886-PR SITE-F2	###	###	###	###
10415-Ex-Base	###	###	###	###
X-886-PR SITE_F1	###	###	###	###
X-886-PR SITE_F3	###	###	###	###
X-886-EX-BASE	###	###	###	###
X-886-EX SURVEY	###	###	###	###
886-PR Legacy Drive-Roundabout				
886-PR Legacy Drive				
haul_route GEC				
X-Title-GEC-haul route				

SHEET KEY	DESCRIPTION
N	BENCHMARK
	COLORADO SPRINGS UTILITIES (FIMS) MONUMENT F206
	A BERNTSEN TOP SECURITY MONUMENT SYSTEM WITH A 3.5-INCH DIAMETER ALUMINUM CAP IN A ROAD BOX, LOCATED ON THE NORTHWEST CORNER OF FONTAINE BOULEVARD AND POWERS BOULEVARD.
	ELEVATION - 5897.89' U.S. SURVEY FT
	BASIS OF BEARING
	BEARINGS ARE BASED ON THE NORTH LINE OF THE NORTHWEST QUARTER OF SECTION 9, TOWNSHIP 15 SOUTH, RANGE 65 WEST OF THE 6TH P.M. SAID LINE BEARS S89°51'23"E FROM THE NORTHWEST CORNER OF SAID SECTION 9 (2 1/2" AULM. CAP PLS 17864) TO THE N 1/4 CORNER OF SAID SECTION 9 (3 1/2" AULM. CAP PLS 10377)

PREPARED BY:
Matrix

SEAL
PRELIMINARY
THIS DRAWING HAS NOT BEEN APPROVED BY GOVERNING AGENCIES AND IS SUBJECT TO CHANGE

FOR AND ON BEHALF OF
MATRIX DESIGN GROUP, INC.
PROJECT No. 23.886.078

TRAILS AT ASPEN RIDGE - STOCKPILE				
CONSTRUCTION DRAWINGS GRADING AND EROSION CONTROL PLANS				
TITLE SHEET				
DESIGNED BY:	NMS	SCALE	DATE ISSUED:	MAY 2023
DRAWN BY:	KGJ	HORIZ	N/A	DRAWING No.
CHECKED BY:	RA	VERT.	N/A	SHEET
				1 OF 5
				TS01



Know what's below.
Call before you dig.

GENERAL CONSTRUCTION NOTES:

- STORMWATER DISCHARGES FROM CONSTRUCTION SITES SHALL NOT CAUSE OR THREATEN TO CAUSE POLLUTION, CONTAMINATION, OR DEGRADATION OF STATE WATERS. ALL WORK AND EARTH DISTURBANCE SHALL BE DONE IN A MANNER THAT MINIMIZES POLLUTION OF ANY ON-SITE OR OFF-SITE WATERS, INCLUDING WETLANDS.
- NOTWITHSTANDING ANYTHING DEPICTED IN THESE PLANS IN WORDS OR GRAPHIC REPRESENTATION, ALL DESIGN AND CONSTRUCTION RELATED TO ROADS, STORM DRAINAGE AND EROSION CONTROL SHALL CONFORM TO THE STANDARDS AND REQUIREMENTS OF THE MOST RECENT VERSION OF THE RELEVANT ADOPTED EL PASO COUNTY STANDARDS, INCLUDING THE LAND DEVELOPMENT CODE, THE ENGINEERING CRITERIA MANUAL, THE DRAINAGE CRITERIA MANUAL, AND THE DRAINAGE CRITERIA MANUAL VOLUME 2. ANY DEVIATIONS FROM REGULATIONS AND STANDARDS MUST BE REQUESTED, AND APPROVED, IN WRITING.
- A SEPARATE STORMWATER MANAGEMENT PLAN (SMWP) FOR THIS PROJECT SHALL BE COMPLETED AND AN EROSION AND STORMWATER QUALITY CONTROL PERMIT (ESQCP) ISSUED PRIOR TO COMMENCING CONSTRUCTION. DURING CONSTRUCTION THE SWMP IS THE RESPONSIBILITY OF THE DESIGNATED QUALIFIED STORMWATER MANAGER OR CERTIFIED EROSION CONTROL INSPECTOR. THE SWMP SHALL BE LOCATED ON SITE AT ALL TIMES DURING CONSTRUCTION AND SHALL BE KEPT UP TO DATE WITH WORK PROGRESS AND CHANGES IN THE FIELD.
- ONCE THE ESQCP IS APPROVED AND A "NOTICE TO PROCEED" HAS BEEN ISSUED, THE CONTRACTOR MAY INSTALL THE INITIAL STAGE EROSION AND SEDIMENT CONTROL MEASURES AS INDICATED ON THE APPROVED GEC. A PRECONSTRUCTION MEETING BETWEEN THE CONTRACTOR, ENGINEER, AND EL PASO COUNTY WILL BE HELD PRIOR TO ANY CONSTRUCTION. IT IS THE RESPONSIBILITY OF THE APPLICANT TO COORDINATE THE MEETING TIME AND PLACE WITH COUNTY STAFF.
- CONTROL MEASURES MUST BE INSTALLED PRIOR TO COMMENCEMENT OF ACTIVITIES THAT COULD CONTRIBUTE POLLUTANTS TO STORMWATER. TEMPORARY SEDIMENT AND EROSION CONTROL MEASURES FOR ALL SLOPES, CHANNELS, DITCHES, AND DISTURBED LAND AREAS SHALL BE INSTALLED IMMEDIATELY UPON COMPLETION OF THE DISTURBANCE.
- ALL TEMPORARY SEDIMENT AND EROSION CONTROL MEASURES SHALL BE MAINTAINED AND REMAIN IN EFFECTIVE OPERATING CONDITION UNTIL PERMANENT SOIL EROSION CONTROL MEASURES ARE IMPLEMENTED AND FINAL STABILIZATION IS ESTABLISHED. ALL PERSONS ENGAGED IN LAND DISTURBANCE ACTIVITIES SHALL ASSESS THE ADEQUACY OF CONTROL MEASURES AT THE SITE AND IDENTIFY IF CHANGES TO THOSE CONTROL MEASURES ARE NEEDED TO ENSURE THE CONTINUED EFFECTIVE PERFORMANCE OF THE CONTROL MEASURES. ALL CHANGES TO TEMPORARY SEDIMENT AND EROSION CONTROL MEASURES MUST BE INCORPORATED INTO THE STORMWATER MANAGEMENT PLAN PRIOR TO IMPLEMENTATION.
- TEMPORARY STABILIZATION SHALL BE IMPLEMENTED ON DISTURBED AREAS AND STOCKPILES WHERE GROUND DISTURBING CONSTRUCTION ACTIVITY HAS PERMANENTLY CEASED OR TEMPORARILY CEASED FOR LONGER THAN 14 DAYS. AN AREA THAT IS GOING TO REMAIN IN AN INTERIM STATE FOR MORE THAN 60 DAYS SHALL ALSO BE STABILIZED.
- FINAL STABILIZATION MUST BE IMPLEMENTED AT ALL APPLICABLE CONSTRUCTION SITES. FINAL STABILIZATION IS ACHIEVED WHEN ALL GROUND DISTURBING ACTIVITIES ARE COMPLETE AND ALL DISTURBED AREAS EITHER HAVE A UNIFORM VEGETATIVE COVER WITH INDIVIDUAL PLAN DENSITY OF 70 PERCENT OF PRE-DISTURBANCE LEVELS ESTABLISHED OR EQUIVALENT PERMANENT ALTERNATIVE STABILIZATION METHOD IS IMPLEMENTED. ALL TEMPORARY SEDIMENT AND EROSION CONTROL MEASURES SHALL BE REMOVED UPON FINAL STABILIZATION AND BEFORE PERMIT CLOSURE.
- ALL PERMANENT STORMWATER MANAGEMENT FACILITIES SHALL BE INSTALLED AS DEFINED IN THE APPROVED PLANS. ANY PROPOSED CHANGES THAT EFFECT THE HYDROLOGY OR HYDRAULICS OF A PERMANENT STORMWATER MANAGEMENT STRUCTURES MUST BE APPROVED BY THE ECM ADMINISTRATOR PRIOR TO IMPLEMENTATION.
- ANY EARTH DISTURBANCE SHALL BE CONDUCTED IN SUCH A MANNER SO AS TO EFFECTIVELY MINIMIZE ACCELERATED SOIL EROSION AND RESULTING SEDIMENTATION. ALL DISTURBANCES SHALL BE DESIGNED, CONSTRUCTED, AND COMPLETED SO THAT THE EXPOSED AREA OF ANY DISTURBED LAND SHALL BE LIMITED TO THE SHORTEST PRACTICAL PERIOD OF TIME. PRE-EXISTING VEGETATION SHALL BE PROTECTED AND MAINTAINED WITHIN 50 HORIZONTAL FEET OF A WATERS OF THE STATE, UNLESS INFEASIBLE AND SPECIFICALLY REQUESTED AND APPROVED.

- COMPACTION OF SOIL MUST BE PREVENTED IN AREAS DESIGNATED FOR INFILTRATION CONTROL MEASURES OR WHERE FINAL STABILIZATION WILL BE ACHIEVED BY VEGETATIVE COVER. AREAS DESIGNATED FOR INFILTRATION CONTROL SHALL ALSO BE PROTECTED FROM SEDIMENTATION DURING CONSTRUCTION UNTIL FINAL STABILIZATION IS ACHIEVED.
- ANY TEMPORARY OR PERMANENT FACILITY DESIGNED AND CONSTRUCTED FOR THE CONVEYANCE OF STORMWATER AROUND, THROUGH, OR FROM THE EARTH DISTURBANCE AREA SHALL BE A STABILIZED CONVEYANCE DESIGNED TO MINIMIZE EROSION AND THE DISCHARGE OF SEDIMENT OFF SITE.
- CONCRETE WASH WATER SHALL BE CONTAINED AND DISPOSED OF IN ACCORDANCE WITH THE SWMP. NO WASH WATER SHALL BE DISCHARGED TO OR ALLOWED TO RUNOFF TO STATE WATERS, INCLUDING ANY SURFACE OR SUBSURFACE STORM DRAINAGE SYSTEM OR FACILITIES. CONCRETE WASHOUT SHALL NOT BE LOCATED IN AN AREA WHERE SHALLOW GROUNDWATER MAY BE PRESENT, OR WITHIN 50 FEET OF A SURFACE WATER BODY.
- DURING DEWATERING OPERATIONS OF UNCONTAMINATED GROUND WATER MAY BE DISCHARGED ON SITE, BUT SHALL NOT LEAVE THE SITE IN THE FORM OF SURFACE RUNOFF UNLESS AN APPROVED STATE DEWATERING PERMIT IS IN PLACE.
- EROSION CONTROL BLANKETING OR OTHER PROTECTIVE COVERING SHALL BE USED ON SLOPES STEEPER THAN 3:1.
- CONTRACTOR SHALL BE RESPONSIBLE FOR THE REMOVAL OF ALL WASTES FROM THE CONSTRUCTION SITE FOR DISPOSAL IN ACCORDANCE WITH LOCAL AND STATE REGULATORY REQUIREMENTS. NO CONSTRUCTION DEBRIS, TREE SLASH, BUILDING MATERIAL WASTES OR UNUSED BUILDING MATERIALS SHALL BE BURIED, DUMPED, OR DISCHARGED AT THE SITE.
- WASTE MATERIALS SHALL NOT BE TEMPORARILY PLACED OR STORED IN THE STREET, ALLEY, OR OTHER PUBLIC WAY, UNLESS IN ACCORDANCE WITH AN APPROVED TRAFFIC CONTROL PLAN. CONTROL MEASURES MAY BE REQUIRED BY EL PASO COUNTY ENGINEERING IF DEEMED NECESSARY, BASED ON SPECIFIC CONDITIONS AND CIRCUMSTANCES.
- TRACKING OF SOILS AND CONSTRUCTION DEBRIS OFF-SITE SHALL BE MINIMIZED. MATERIALS TRACKED OFF-SITE SHALL BE CLEANED UP AND PROPERLY DISPOSED OF IMMEDIATELY.
- THE OWNER/DEVELOPER SHALL BE RESPONSIBLE FOR THE REMOVAL OF ALL CONSTRUCTION DEBRIS, DIRT, TRASH, ROCK, SEDIMENT, SOIL, AND SAND THAT MAY ACCUMULATE IN ROADS, STORM DRAINS AND OTHER DRAINAGE CONVEYANCE SYSTEMS AND STORMWATER APPURTENANCES AS A RESULT OF SITE DEVELOPMENT.
- THE QUANTITY OF MATERIALS STORED ON THE PROJECT SITE SHALL BE LIMITED, AS MUCH AS PRACTICAL, TO THAT QUANTITY REQUIRED TO PERFORM THE WORK IN AN ORDERLY SEQUENCE. ALL MATERIALS STORED ON-SITE SHALL BE STORED IN A NEAT, ORDERLY MANNER, IN THEIR ORIGINAL CONTAINERS, WITH ORIGINAL MANUFACTURER'S LABELS.
- NO CHEMICAL(S) HAVING THE POTENTIAL TO BE RELEASED IN STORMWATER ARE TO BE STORED OR USED ONSITE UNLESS PERMISSION FOR THE USE OF SUCH CHEMICAL(S) IS GRANTED IN WRITING BY THE ECM ADMINISTRATOR. IN GRANTING APPROVAL FOR THE USE OF SUCH CHEMICAL(S), SPECIAL CONDITIONS AND MONITORING MAY BE REQUIRED.
- BULK STORAGE OF ALLOWED PETROLEUM PRODUCTS OR OTHER ALLOWED LIQUID CHEMICALS IN EXCESS OF 55 GALLONS SHALL REQUIRE ADEQUATE SECONDARY CONTAINMENT PROTECTION TO CONTAIN ALL SPILLS ONSITE AND TO PREVENT ANY SPILLED MATERIALS FROM ENTERING STATE WATERS, ANY SURFACE OR SUBSURFACE STORM DRAINAGE SYSTEM OR OTHER FACILITIES.
- NO PERSON SHALL CAUSE THE IMPEDIMENT OF STORMWATER FLOW IN THE CURB AND GUTTER OR DITCH EXCEPT WITH APPROVED SEDIMENT CONTROL MEASURES.
- OWNER/DEVELOPER AND THEIR AGENTS SHALL COMPLY WITH THE "COLORADO WATER QUALITY CONTROL ACT" (TITLE 25, ARTICLE 8, CRS), AND THE "CLEAN WATER ACT" (33 USC 1344), IN ADDITION TO THE REQUIREMENTS OF THE LAND DEVELOPMENT CODE, DCM VOLUME II AND THE ECM APPENDIX I. ALL APPROPRIATE PERMITS MUST BE OBTAINED BY THE CONTRACTOR PRIOR TO CONSTRUCTION (1041, NPDES, FLOODPLAIN, 404, FUGITIVE DUST, ETC.). IN THE EVENT OF CONFLICTS BETWEEN THESE REQUIREMENTS AND OTHER LAWS, RULES, OR REGULATIONS OF OTHER FEDERAL, STATE, LOCAL, OR COUNTY AGENCIES, THE MOST RESTRICTIVE LAWS, RULES, OR

REGULATIONS SHALL APPLY.

- ALL CONSTRUCTION TRAFFIC MUST ENTER/EXIT THE SITE ONLY AT APPROVED CONSTRUCTION ACCESS POINTS.
- PRIOR TO CONSTRUCTION THE PERMITTEE SHALL VERIFY THE LOCATION OF EXISTING UTILITIES.
- A WATER SOURCE SHALL BE AVAILABLE ON SITE DURING EARTHWORK OPERATIONS AND SHALL BE UTILIZED AS REQUIRED TO MINIMIZE DUST FROM EARTHWORK EQUIPMENT AND WIND.
- THE SOILS REPORT FOR THIS SITE HAS BEEN PREPARED BY ENTECH ENGINEERING, INC., DATED AUGUST 9, 2019 AND SHALL BE CONSIDERED A PART OF THESE PLANS.
- AT LEAST TEN (10) DAYS PRIOR TO THE ANTICIPATED START OF CONSTRUCTION, FOR PROJECTS THAT WILL DISTURB ONE (1) ACRE OR MORE, THE OWNER OR OPERATOR OF CONSTRUCTION ACTIVITY SHALL SUBMIT A PERMIT APPLICATION FOR STORMWATER DISCHARGE TO THE COLORADO DEPARTMENT OF PUBLIC HEALTH AND ENVIRONMENT, WATER QUALITY DIVISION. THE APPLICATION CONTAINS CERTIFICATION OF COMPLETION OF A STORMWATER MANAGEMENT PLAN (SWMP), OF WHICH THIS GRADING AND EROSION CONTROL PLAN MAY BE A PART. FOR INFORMATION OR APPLICATION MATERIALS CONTACT:

COLORADO DEPARTMENT OF PUBLIC HEALTH AND ENVIRONMENT
WATER QUALITY CONTROL DIVISION
WQCD - PERMITS
4300 CHERRY CREEK DRIVE SOUTH
DENVER, CO 80246-1530
ATTN: PERMITS UNIT

NRCS SOIL SURVEY FOR EL PASO COUNTY

SOIL ID NO.	SOIL TYPE	HYDROLOGIC CLASSIFICATION
8	BLAKELAND LOAMY SAND (1%-9% SLOPES)	A
52	MANZANST CLAY LOAM (0%-3% SLOPES)	C
56	NELSON-TASSEL FINE SANDY LOAM (3%-18% SLOPES)	D
108	WILEY SILT LOAM (3%-9% SLOPES)	B
86	STONEHAM SANDY LOAM (3%-8% SLOPES)	B

TIMING

ANTICIPATED STARTING AND COMPLETION TIME PERIOD OF SITE GRADING:
MAY 2023 THRU AUGUST 2023

EXPECTED DATE ON WHICH THE FINAL STABILIZATION WILL BE COMPLETED:
JUNE 2024

AREAS

TOTAL AREA: 38.5 ACRES

clarify that this is the proposed total disturbed area.

RECEIVING WATERS

NAME OF RECEIVING WATERS
BIG JOHNSON RESERVOIR

ENGINEER'S NOTES:

THE EXISTING VEGETATION CONSISTS OF NATIVE GRASSES AND SCRUB OAK. BASED ON SITE VISITS AND A REVIEW OF AERIAL PHOTOGRAPHY, THE VEGETATIVE COVER AT STOCK PILE SITE IS APPROXIMATELY 100%.

REFERENCE DRAWINGS	####	####	####	####
X-Title-GEC	####	####	####	####
X-Title-GEC-haul route	####	####	####	####
No.	DATE	DESCRIPTION		BY
REVISIONS				
COMPUTER FILE MANAGEMENT				
FILE NAME: S:\20.886.028 Trails PUDSP Major Amend\100 Dwg\104 Plan Sets\Construction Plans\GEC Plan\haul_route GN01.dwg				
CTB FILE: ---				
PLOT DATE: May 1, 2023 11:50:16 AM				
THIS DRAWING IS CURRENT AS OF PLOT DATE AND MAY BE SUBJECT TO CHANGE.				

SHEET KEY
N
E
S
W

BENCHMARK
COLORADO SPRINGS UTILITIES (FIMS) MONUMENT F206
A BERNTSEN TOP SECURITY MONUMENT SYSTEM WITH A 3.5-INCH DIAMETER ALUMINUM CAP IN A ROAD BOX, LOCATED ON THE NORTHWEST CORNER OF FONTAINE BOULEVARD AND POWERS BOULEVARD.
ELEVATION - 5897.89' U.S. SURVEY FT

BASIS OF BEARING
BEARINGS ARE BASED ON THE NORTH LINE OF THE NORTHWEST QUARTER OF SECTION 9, TOWNSHIP 15 SOUTH, RANGE 65 WEST OF THE 6TH P.M. SAID LINE BEARS S89°51'23"E FROM THE NORTHWEST CORNER OF SAID SECTION 9 (2 1/2" AULM. CAP PLS 17664) TO THE N 1/2 CORNER OF SAID SECTION 9 (3 1/2" AULM. CAP PLS 10377)

PREPARED BY:

SEAL
PRELIMINARY
THIS DRAWING HAS NOT BEEN APPROVED BY GOVERNING AGENCIES AND IS SUBJECT TO CHANGE

FOR AND ON BEHALF OF
MATRIX DESIGN GROUP, INC.
PROJECT No. 23.886.078

TRAILS AT ASPEN RIDGE - STOCKPILE				
CONSTRUCTION DRAWINGS GRADING AND EROSION CONTROL PLANS				
GENERAL NOTES				
DESIGNED BY:	NMS	SCALE	DATE ISSUED:	MAY 2023
DRAWN BY:	TRS	HORIZ N/A	SHEET	2 OF 5
CHECKED BY:	NMS	VERT. N/A	DRAWING No.	GN01

NPDES NOTES:

- THE CONTRACTOR SHALL REMOVE ALL SEDIMENT, MUD, AND CONSTRUCTION DEBRIS THAT MAY ACCUMULATE IN THE FLOWLINES AND PUBLIC RIGHTS OF WAYS AS A RESULT OF THIS CONSTRUCTION PROJECT. SAID REMOVAL SHALL BE CONDUCTED IN A TIMELY MANNER, OR AS DIRECTED BY THE ENGINEER.
- THIS CONSTRUCTION ACTIVITIES STORMWATER MANAGEMENT PLAN (SWMP) HAS BEEN SUBMITTED AS PART OF AN APPLICATION FOR AN EROSION AND SEDIMENT CONTROL PERMIT FILED WITH THE CITY OF COLORADO SPRINGS AND AS INCLUSION BY REFERENCE TO THE COPHE CONSTRUCTION ACTIVITY PERMIT. THE SWMP IS A LIVING DOCUMENT AND ADDITIONAL EROSION AND SEDIMENT CONTROL MEASURES MAY BE REQUIRED OF THE CONTRACTOR DUE TO UNFORESEEN EROSION PROBLEMS OR IF THE SUBMITTED PLAN DOES NOT FUNCTION AS INTENDED. THE REQUIREMENTS OF THIS PLAN SHALL BE THE OBLIGATION OF THE LAND OWNER AND/OR HIS SUCCESSORS OR HEIRS; UNTIL SUCH TIME AS THE PLAN IS PROPERLY COMPLETED, MODIFIED, OR VOIDED.
- THE CONTRACTOR SHALL BE HELD RESPONSIBLE FOR REMEDIATION OF ANY ADVERSE IMPACTS TO ADJACENT WATERWAYS, WETLANDS, ETC., RESULTING FROM WORK DONE AS PART OF THIS PROJECT.
- THE CONTRACTOR SHALL PREVENT SEDIMENT, DEBRIS AND ALL OTHER POLLUTANTS FROM ENTERING THE STORM SEWER SYSTEM DURING ALL DEMOLITION, EXCAVATION, TRENCHING, BORING, GRADING OR OTHER CONSTRUCTION OPERATIONS THAT ARE PART OF THIS PROJECT.
- A LAYER OF SUITABLE MULCH SHALL BE APPLIED TO ALL DISTURBED PORTIONS OF THE SITE WITHIN 21 DAYS OF THE COMPLETION OF GRADING. SAID MULCH SHALL BE APPLIED AT A RATE OF 2 TONS PER ACRE AND SHALL BE TACKED OR FASTENED BY AN APPROVED METHOD SUITABLE FOR THE TYPE OF MULCH USED. ROUGH-CUT STREETS SHALL BE MULCHED UNLESS A LAYER OF AGGREGATE ROAD BASE OR ASPHALT PAVING IS TO BE APPLIED TO SAID ROUGH-CUT STREETS WITHIN THE 21 DAY PERIOD AFTER COMPLETION OF OVERLOT GRADING. AN AREA THAT IS GOING TO REMAIN IN AN INTERIM STATE FOR MORE THEN SIXTY (60) DAYS SHALL ALSO BE SEEDED. ALL TEMPORARY SOIL EROSION CONTROL MEASURES AND BMP'S SHALL BE MAINTAINED UNTIL PERMANENT SOIL EROSION CONTROL MEASURES ARE IMPLEMENTED.
- THE CONTRACTOR SHALL LOCATE, INSTALL, AND MAINTAIN ALL EROSION CONTROL AND WATER QUALITY "BEST MANAGEMENT PRACTICES" AS INDICATED IN THE APPROVED CONSTRUCTION ACTIVITIES STORMWATER MANAGEMENT PLAN. BMP'S SHALL BE MAINTAINED AND KEPT IN GOOD REPAIR FOR THE DURATION OF THIS PROJECT.
- AT A MINIMUM, THE CONTRACTOR SHALL INSPECT, AND KEEP A LOG OF, ALL BMP'S WEEKLY AND AFTER SIGNIFICANT PRECIPITATION EVENTS. ALL NECESSARY MAINTENANCE AND REPAIR SHALL BE COMPLETED IN A TIMELY MANNER. ACCUMULATED SEDIMENT AND DEBRIS SHALL BE REMOVED FROM A BMP WHEN THE SEDIMENT LEVEL REACHES ONE-HALF THE HEIGHT OF THE BMP, OR, AT ANY TIME THAT SEDIMENT OR DEBRIS ADVERSELY IMPACTS THE FUNCTIONING OF THE BMP.
- THE CONTRACTOR SHALL PROPERLY COVER ALL LOADS OF CUT AND FILL MATERIAL IMPORTED TO OR EXPORTED FROM THIS SITE TO PREVENT LOSS OF THE MATERIAL DURING TRANSPORT WITHIN PUBLIC RIGHTS OF WAY.
- THE USE OF REBAR, STEEL STAKES, OR STEEL FENCE POSTS TO STAKE DOWN STRAW OR HAY BALES; OR TO SUPPORT SILT FENCING USED AS AN EROSION CONTROL MEASURE; IS PROHIBITED. THE USE OF OSHA APPROVED COLORED WARNING CAPS ON REBAR OR FENCE POSTS USED WITH EROSION CONTROL MEASURES IS NOT ACCEPTABLE.
- SOILS THAT WILL BE STOCKPILED FOR MORE THAN 30 DAYS SHALL BE MULCHED AND SEEDED WITH A TEMPORARY OR PERMANENT GRASS COVER WITHIN 21 DAYS OF STOCKPILE CONSTRUCTION. IF STOCKPILES ARE LOCATED WITHIN 100 FEET OF A DRAINAGEWAY, ADDITIONAL SEDIMENT CONTROLS SUCH AS TEMPORARY DIKES OR SILT FENCE SHALL BE REQUIRED.
- MODIFICATION OF AN ACTIVE EROSION AND SEDIMENT CONTROL PERMIT BY THE CONTRACTOR SHALL REQUIRE TIMELY NOTIFICATION OF AND APPROVAL BY THE CITY OF COLORADO SPRINGS. TERMINATION OF AN ACTIVE EROSION AND SEDIMENT CONTROL PERMIT UPON COMPLETION OF THE PROJECT REQUIRES NOTIFICATION OF AND APPROVAL BY THE CITY OF COLORADO SPRINGS.
- UNLESS CONFINED IN A PREDEFINED, BERMED CONTAINMENT AREA, THE CLEANING OF CONCRETE TRUCK DELIVERY CHUTES IS PROHIBITED AT THE JOB SITE. THE DISCHARGE OF WATER CONTAINING WASTE CEMENT TO THE STORM SEWER SYSTEM IS PROHIBITED.
- THE CONTRACTOR SHALL PROTECT ALL STORM SEWER FACILITIES ADJACENT TO ANY LOCATION WHERE PAVEMENT CUTTING OPERATIONS INVOLVING WHEEL CUTTING, SAW CUTTING OR ABRASIVE WATER JET CUTTING ARE TO TAKE PLACE. THE DISCHARGE OF ANY WATER CONTAMINATED BY WASTE PRODUCTS FROM CUTTING OPERATIONS TO THE STORM SEWER SYSTEM IS PROHIBITED. THE CONTRACTOR SHALL REMOVE AND PROPERLY DISPOSE OF ALL WASTE PRODUCTS GENERATED BY SAID CUTTING OPERATIONS ON A DAILY BASIS.
- LOCATION OF STAGING, STORAGE, EQUIPMENT MAINTENANCE, TEMPORARY DISPOSAL, VEHICLE TRACKING CONTROL AND CONCRETE TRUCK WASHOUT AREAS WILL BE DETERMINED IN THE FIELD AT THE START OF CONSTRUCTION ACTIVITY AND DELINEATED ON THIS PLAN.

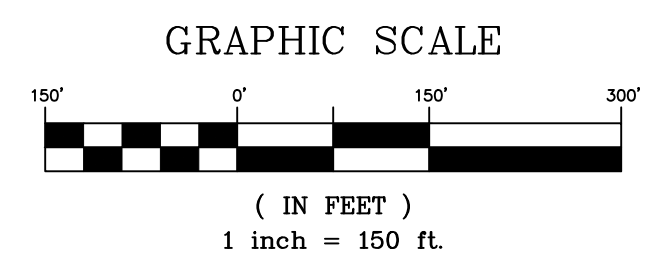


Know what's below.
Call before you dig.

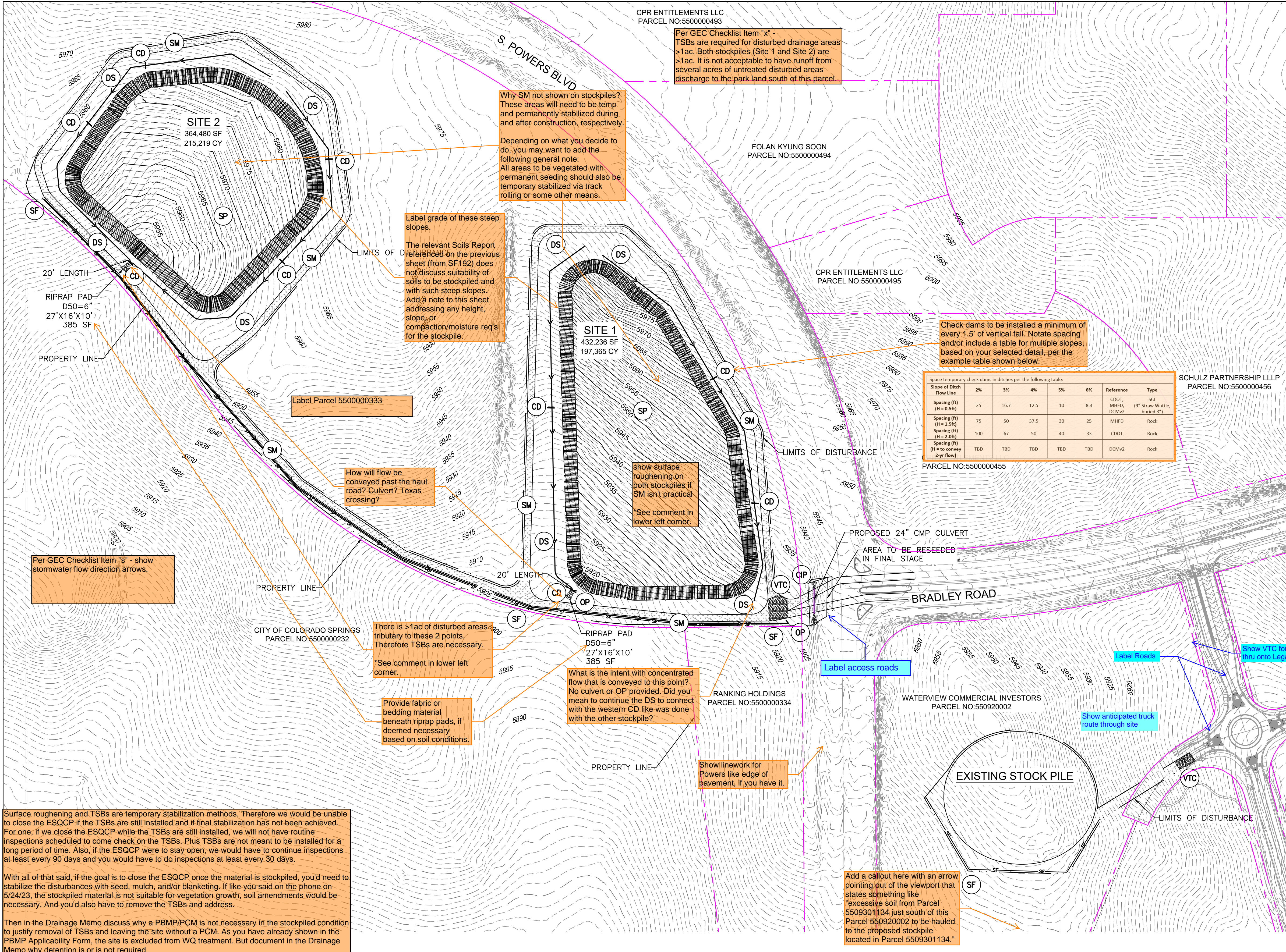
EROSION CONTROL LEGEND

- TEMPORARY MULCHING AND SEEDING IN FINAL STAGE
- STOCKPILE MANAGEMENT
- SILT FENCE
- CHECK DAM
- VEHICLE TRACKING CONTROL
- CULVERT INLET PROTECTION/ OUTLET PROTECTION
- PROPOSED CONTOURS
- EXISTING CONTOURS
- DRAINAGE SWALE SLOPE LABEL
- PROPERTY LINE
- LIMITS OF DISTURBANCE/ CONSTRUCTION SITE BOUNDARY
- PROPOSED TEMPORARY ROAD

Note: Will need agreement with Waterview Commercial Investors for use of their site for haul/truck route. Also, an official "haul route" may be needed for use of Bradley Road. Information is being forwarded to EPC Capital Projects and will let you know once we have received any additional information regarding this requirement.



- NOTES:
- ALL DRAINAGE SWALES SHALL HAVE A MINIMUM LONGITUDINAL SLOPE OF 0.5%, MINIMUM 1.5' DEPTH, AND MAXIMUM 3:1 SIDE SLOPES.
 - ALL EROSION CONTROL BLANKET SHALL BE INSPECTED 24-MONTHS AFTER INSTALLATION. EROSION CONTROL BLANKET MAY BE REQUIRED TO RE-INSTALLED PER MANUFACTURER SPECIFICATIONS. CONTRACTOR TO USE SLOPE TRACKING OR EROSION CONTROL BLANKET ON SLOPES 3:1 OR GREATER PER CITY STANDARDS.
 - ALL EROSION CONTROL MEASURES REQUIRED WITHIN THE INITIAL AND INTERIM PHASE OF THIS PLAN ARE TO REMAIN UNTIL FINAL STABILIZATION IS ACHIEVED UNLESS OTHERWISE NOTED.
 - REFERENCE THE CITY OF COLORADO SPRINGS STORMWATER CONSTRUCTION MANUAL, DECEMBER, 2020 FOR REQUIRED SEED MIX. AREAS WITHIN THE SITE THAT ARE INACTIVE FOR 30 DAYS OR GREATER TO BE STABILIZED WITH NATIVE SEED AS SHOWN OR ACCORDING TO AN APPROVED LANDSCAPE PLAN.
 - IN ADDITION TO FINAL EROSION CONTROL MEASURES SHOWN ON THIS PLAN, FINAL STABILIZATION WILL BE OBTAINED IN ACCORDANCE WITH THE FINAL LANDSCAPE PLAN.
 - AREAS WITHIN THE SITE THAT ARE INACTIVE FOR 60 DAYS OR GREATER TO BE STABILIZED WITH NATIVE SEED, AS SHOWN ACCORDING TO AN APPROVED LANDSCAPE PLAN.



Per GEC Checklist Item "X" - TSBs are required for disturbed drainage areas >1ac. Both stockpiles (Site 1 and Site 2) are >1ac. It is not acceptable to have runoff from several acres of untreated disturbed areas discharge to the park land south of this parcel.

Why SM not shown on stockpiles? These areas will need to be temp and permanently stabilized during and after construction, respectively.

Depending on what you decide to do, you may want to add the following general note: All areas to be vegetated with permanent seeding should also be temporarily stabilized via track rolling or some other means.

Label grade of these steep slopes. The relevant Soils Report referenced on the previous sheet (from SF192) does not discuss suitability of soils to be stockpiled and with such steep slopes. Add a note to this sheet addressing any height, slope, or compaction/moisture req's for the stockpile.

Check dams to be installed a minimum of every 1.5' of vertical fall. Note spacing and/or include a table for multiple slopes, based on your selected detail, per the example table shown below.

Slope of Ditch Flow Line	2%	3%	4%	5%	6%	Reference	Type
Spacing (ft) (H = 0.5ft)	25	16.7	12.5	10	8.3	CDOT, MHFD, DCMv2	SCS (9" Straw Wattle, buried 3")
Spacing (ft) (H = 1.5ft)	75	50	37.5	30	25	MHFD	Rock
Spacing (ft) (H = 2.0ft)	100	67	50	40	33	CDOT	Rock
Spacing (ft) (H = to convey 2-yr flow)	TBD	TBD	TBD	TBD	TBD	DCMv2	Rock

show surface roughening on both stockpiles if SM isn't practical. *See comment in lower left corner.

How will flow be conveyed past the haul road? Culvert? Texas crossing?

Per GEC Checklist Item "S" - show stormwater flow direction arrows.

There is >1ac of disturbed areas tributary to these 2 points. Therefore TSBs are necessary. *See comment in lower left corner.

Provide fabric or bedding material beneath riprap pads, if deemed necessary based on soil conditions.

What is the intent with concentrated flow that is conveyed to this point? No culvert or OP provided. Did you mean to continue the DS to connect with the western CD like was done with the other stockpile?

Show linework for Powers like edge of pavement, if you have it.

Add a callout here with an arrow pointing out of the viewport that states something like "excessive soil from Parcel 5509301134 just south of this Parcel 550920002 to be hauled to the proposed stockpile located in Parcel 5509301134."

Surface roughening and TSBs are temporary stabilization methods. Therefore we would be unable to close the ESQCP if the TSBs are still installed and if final stabilization has not been achieved. For one, if we close the ESQCP while the TSBs are still installed, we will not have routine inspections scheduled to come check on the TSBs. Plus TSBs are not meant to be installed for a long period of time. Also, if the ESQCP were to stay open, we would have to continue inspections at least every 90 days and you would have to do inspections at least every 30 days.

With all of that said, if the goal is to close the ESQCP once the material is stockpiled, you'd need to stabilize the disturbances with seed, mulch, and/or blanketing. If like you said on the phone on 5/24/23, the stockpiled material is not suitable for vegetation growth, soil amendments would be necessary. And you'd also have to remove the TSBs and address.

Then in the Drainage Memo discuss why a PBMP/PCM is not necessary in the stockpiled condition to justify removal of TSBs and leaving the site without a PCM. As you have already shown in the PBMP Applicability Form, the site is excluded from WQ treatment. But document in the Drainage Memo why detention is or is not required.

REFERENCE DRAWINGS	DESCRIPTION	BY
X-886-EX SURVEY		
886-PR legacy drive		
X-Title-GEC		
X-886-EX-BASE		
X-886-PR SITE_F1		
X-886-PR SITE_F2		
886-PR Legacy Drive-Roundabout		
X-Title-GEC-haul route		
Plans		

NO.	DATE	DESCRIPTION	BY

COMPUTER FILE MANAGEMENT

FILE NAME: S:\20.886.028 Trails PUDSP Major Amend\100 Dwg\104 Plan Sets\Construction Plans\GEC Plan\haul_route GEC.dwg
 CTB FILE: ---
 PLOT DATE: May 1, 2023 11:50:29 AM
 THIS DRAWING IS CURRENT AS OF PLOT DATE AND MAY BE SUBJECT TO CHANGE.

SHEET KEY	BENCHMARK	BASIS OF BEARING
	COLORADO SPRINGS UTILITIES (FIMS) MONUMENT F206 A BERNTSEN TOP SECURITY MONUMENT SYSTEM WITH A 3.5-INCH DIAMETER ALUMINUM CAP IN A ROAD BOX, LOCATED ON THE NORTHWEST CORNER OF FONTAINE BOULEVARD AND POWERS BOULEVARD. ELEVATION - 5897.89' U.S. SURVEY FT	BEARINGS ARE BASED ON THE NORTH LINE OF THE NORTHWEST QUARTER OF SECTION 9, TOWNSHIP 15 SOUTH, RANGE 65 WEST OF THE 6TH P.M. SAID LINE BEARS S89°51'23"E FROM THE NORTHWEST CORNER OF SAID SECTION 9 (2 1/2" AULM. CAP PLS 17864) TO THE N 1/4 CORNER OF SAID SECTION 9 (3 1/2" AULM. CAP PLS 10377)

PREPARED BY:

SEAL

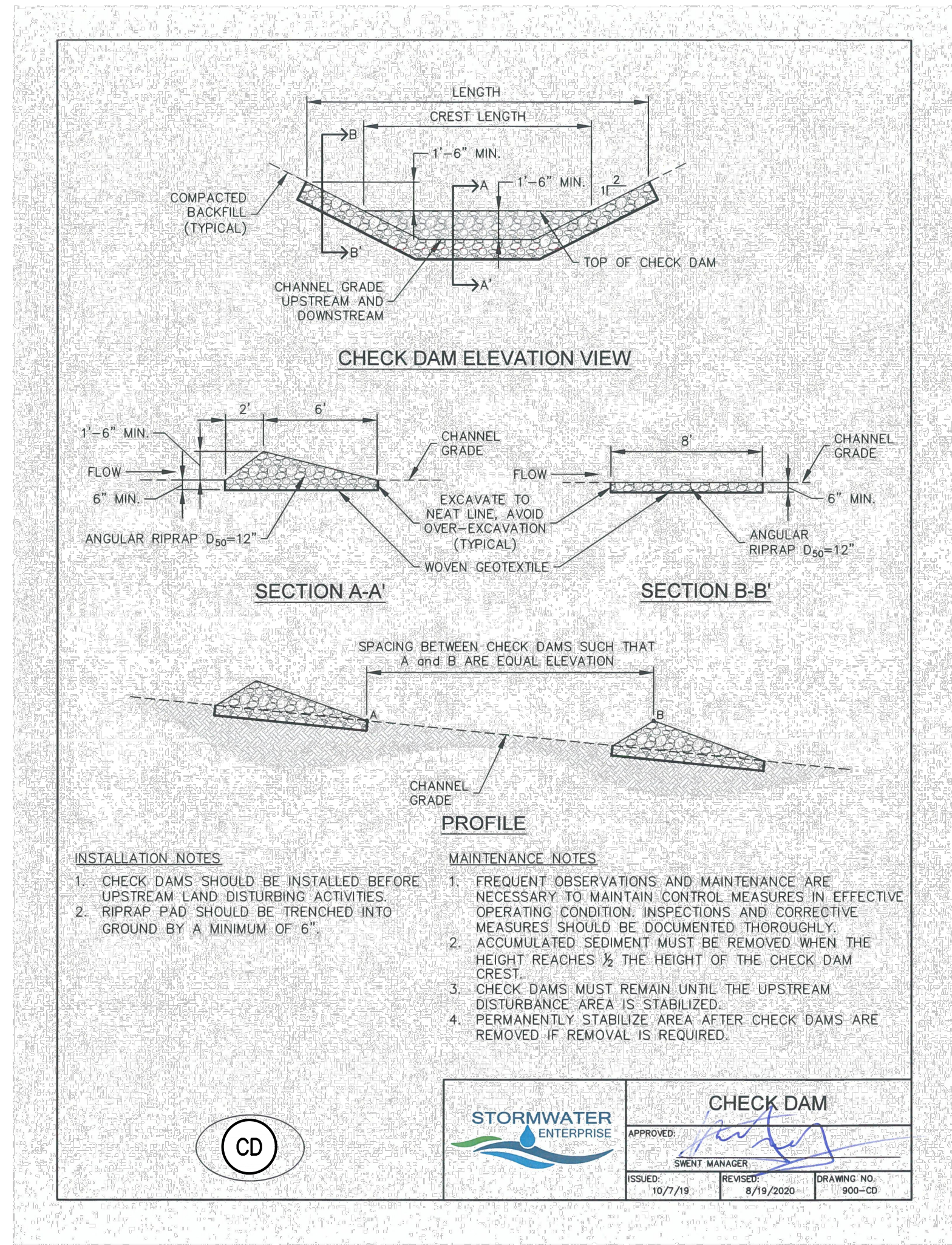
PRELIMINARY
THIS DRAWING HAS NOT BEEN APPROVED BY GOVERNING AGENCIES AND IS SUBJECT TO CHANGE

FOR AND ON BEHALF OF
MATRIX DESIGN GROUP, INC.
PROJECT No. 23.886.078

TRAILS AT ASPEN RIDGE - STOCKPILE			
CONSTRUCTION DRAWINGS GRADING AND EROSION CONTROL PLANS			
GRADING AND EROSION CONTROL PLANS			
DESIGNED BY: NMS	SCALE	DATE ISSUED: MAY 2023	DRAWING No.
DRAWN BY: TRS	HORIZ N/A		
CHECKED BY: NMS	VERT. N/A	SHEET 3 OF 5	GEC01



Know what's below.
Call before you dig.



STORMWATER ENTERPRISE		CHECK DAM	
APPROVED:		ISSUED:	10/7/19
DESIGNED BY:		REVISION:	9/19/2020
DRAWING NO.:	900-CD		

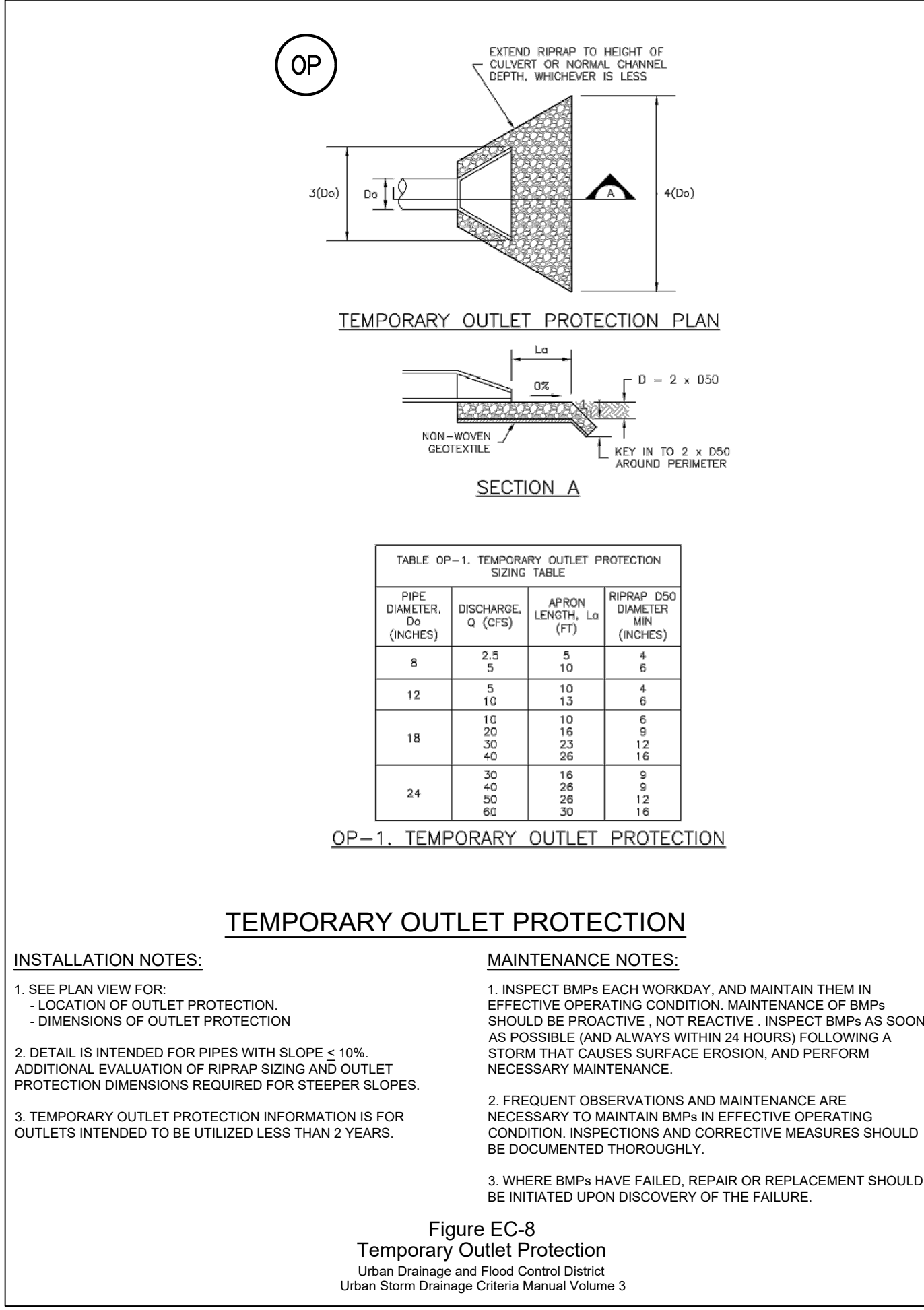


Figure EC-8
Temporary Outlet Protection
Urban Drainage and Flood Control District
Urban Storm Drainage Criteria Manual Volume 3

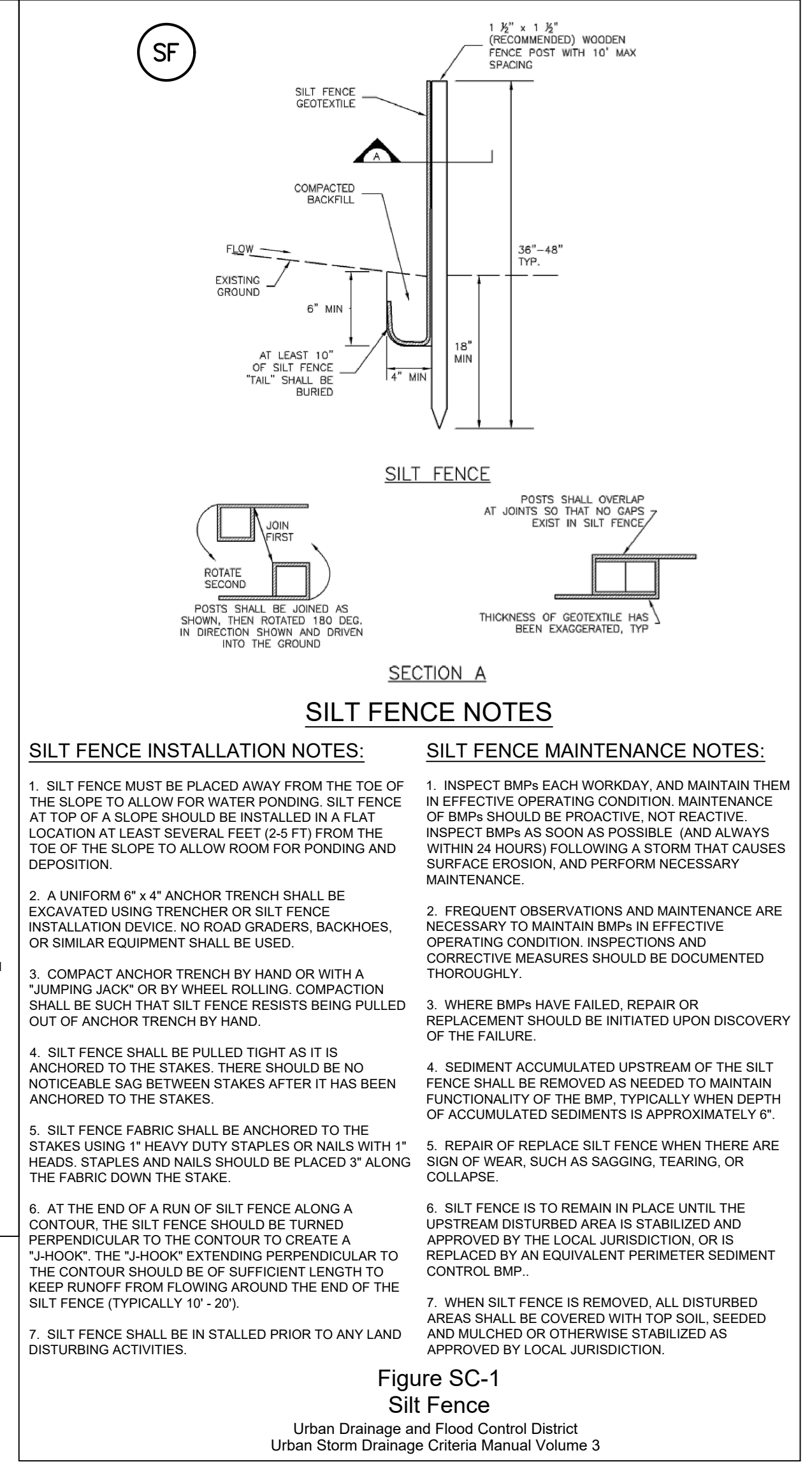
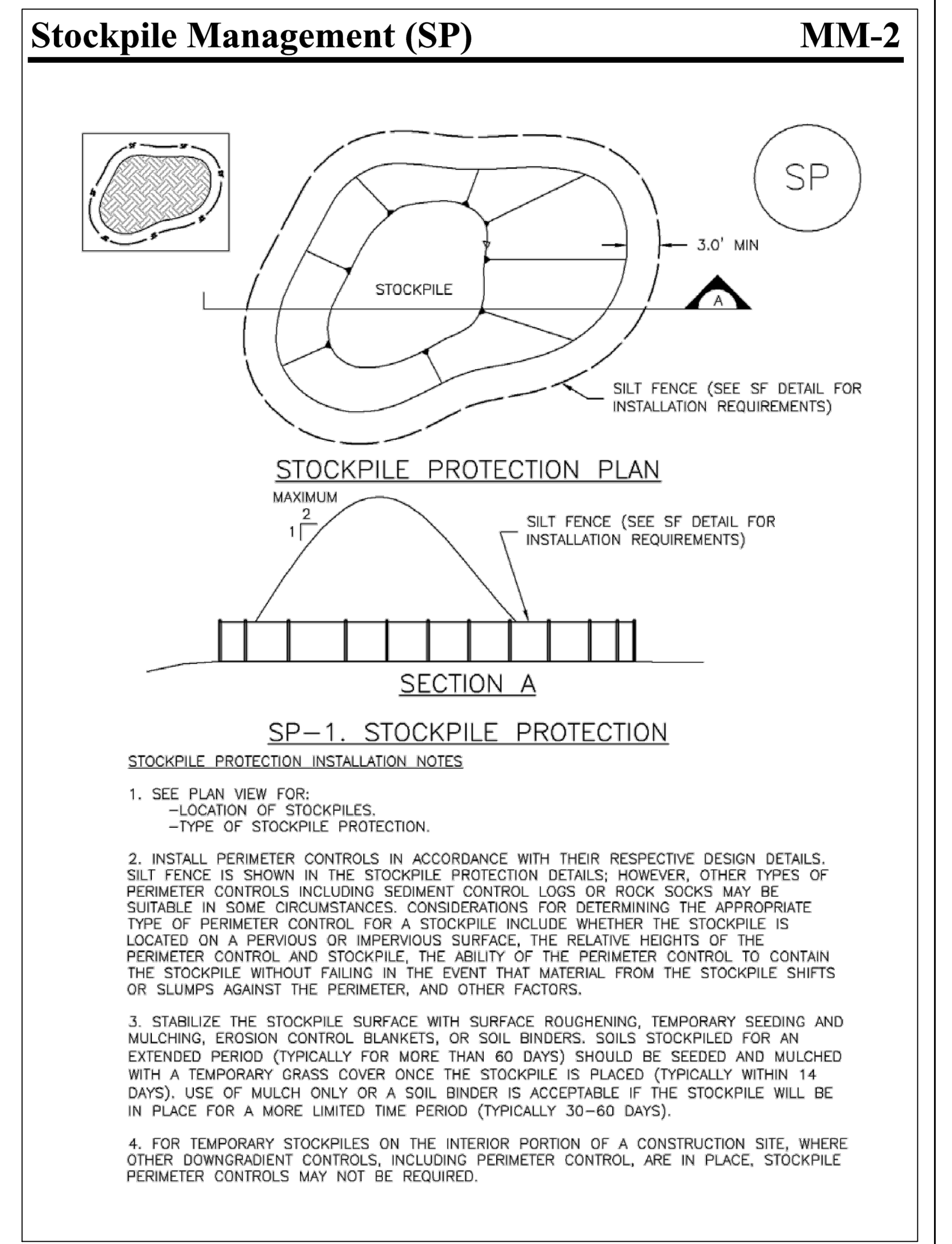


Figure SC-1
Silt Fence
Urban Drainage and Flood Control District
Urban Storm Drainage Criteria Manual Volume 3



TRAILS AT ASPEN RIDGE - STOCKPILE

CONSTRUCTION DRAWINGS
GRADING AND EROSION CONTROL PLANS

EROSION CONTROL DETAILS

PRELIMINARY
THIS DRAWING HAS NOT BEEN APPROVED BY GOVERNING AGENCIES AND IS SUBJECT TO CHANGE

DESIGNED BY: NMS SCALE: DATE ISSUED: MAY 2023 DRAWING No. ECN01
 DRAWN BY: KGI HORIZ N/A SHEET 4 OF 5
 CHECKED BY: NMS VERT. N/A

FOR AND ON BEHALF OF
MATRIX DESIGN GROUP, INC.
PROJECT No. 23.886.078

REFERENCE DRAWINGS	###	###	###	###
X-Title-GEC	###	###	###	###
X-Title-GEC-haul route	###	###	###	###
No.	DATE	DESCRIPTION	BY	
REVISIONS				
COMPUTER FILE MANAGEMENT				
FILE NAME: S:\20.886.028 Trails PUDSP Major Amend\100 Dwg\104 Plan Sets\Construction Plans\GEC Plan\haul_route ECN01.dwg				
CTB FILE: ---				
PLOT DATE: May 1, 2023 11:50:40 AM				
THIS DRAWING IS CURRENT AS OF PLOT DATE AND MAY BE SUBJECT TO CHANGE.				

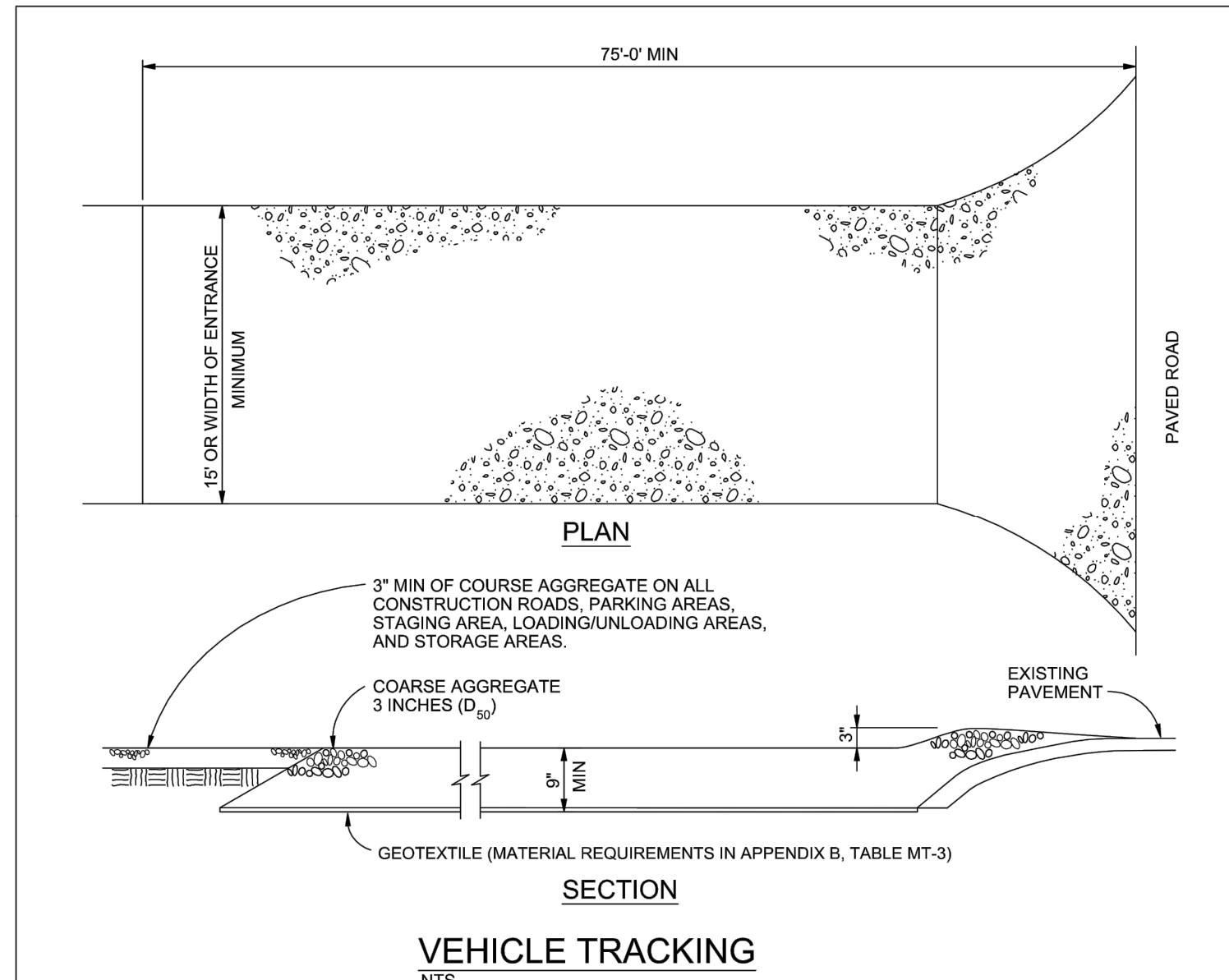
SHEET KEY	N
BENCHMARK	COLORADO SPRINGS UTILITIES (FIMS) MONUMENT F206
	A BERNTSEN TOP SECURITY MONUMENT SYSTEM WITH A 3.5-INCH DIAMETER ALUMINUM CAP IN A ROAD BOX, LOCATED ON THE NORTHWEST CORNER OF FONTAINE BOULEVARD AND POWERS BOULEVARD.
	ELEVATION - 5897.89' U.S. SURVEY FT
BASIS OF BEARING	BEARINGS ARE BASED ON THE NORTH LINE OF THE NORTHWEST QUARTER OF SECTION 9, TOWNSHIP 15 SOUTH, RANGE 65 WEST OF THE 6TH P.M. SAID LINE BEARS S89°51'23"E FROM THE NORTHWEST CORNER OF SAID SECTION 9 (2 1/2" AULM. CAP PLS 17664) TO THE N 1/2 CORNER OF SAID SECTION 9 (3 1/2" AULM. CAP PLS 10377)

PREPARED BY:



Know what's below.
Call before you dig.

Earth Dikes and Drainage Swales (ED/DS) EC-10



VEHICLE TRACKING NOTES

INSTALLATION REQUIREMENTS

1. ALL ENTRANCES TO THE CONSTRUCTION SITE ARE TO BE STABILIZED PRIOR TO CONSTRUCTION BEGINNING.
2. CONSTRUCTION ENTRANCES ARE TO BE BUILT WITH AN APRON TO ALLOW FOR TURNING TRAFFIC, BUT SHOULD NOT BE BUILT OVER EXISTING PAVEMENT EXCEPT FOR A SLIGHT OVERLAP.
3. AREAS TO BE STABILIZED ARE TO BE PROPERLY GRADED AND COMPACTED PRIOR TO LAYING DOWN GEOTEXTILE AND STONE.
4. CONSTRUCTION ROADS, PARKING AREAS, LOADING/UNLOADING ZONES, STORAGE AREAS, AND STAGING AREAS ARE TO BE STABILIZED.
5. CONSTRUCTION ROADS ARE TO BE BUILT TO CONFORM TO SITE GRADES, BUT SHOULD NOT HAVE SIDE SLOPES OR ROAD GRADES THAT ARE EXCESSIVELY STEEP.

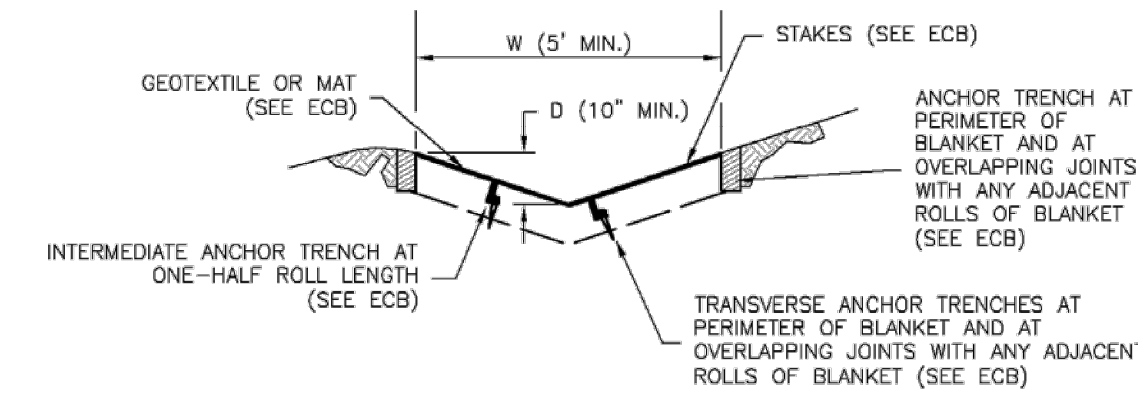
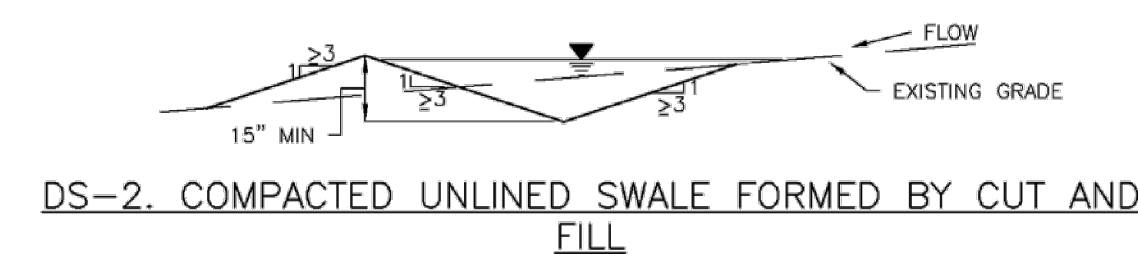
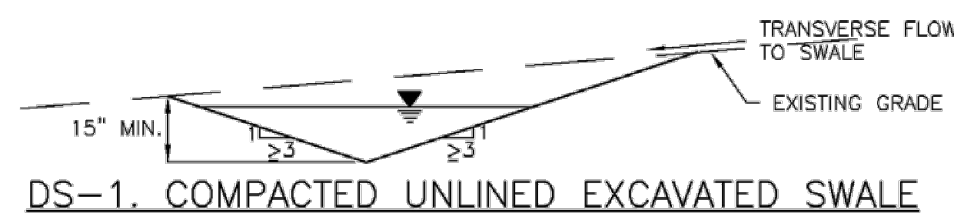
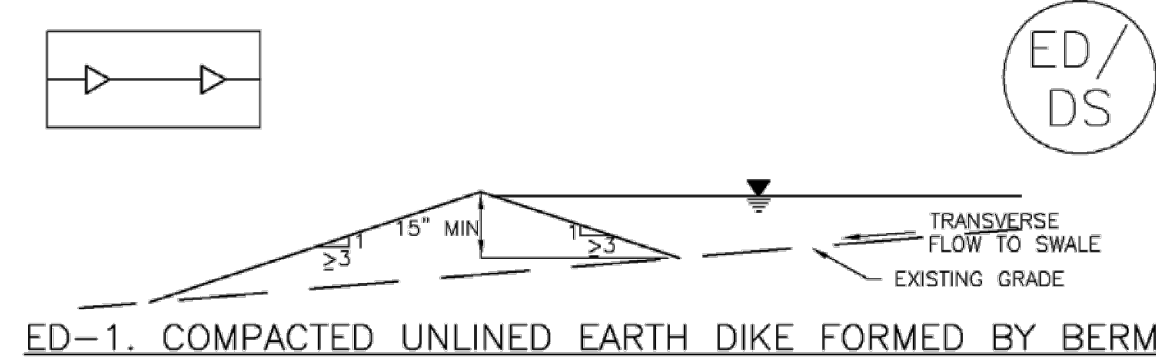
MAINTENANCE REQUIREMENTS

1. REGULAR INSPECTIONS ARE TO BE MADE OF ALL STABILIZED AREAS, ESPECIALLY AFTER STORM EVENTS.
2. STONES ARE TO BE REAPPLIED PERIODICALLY AND WHEN REPAIR IS NECESSARY.
3. SEDIMENT TRACKED ONTO PAVED ROADS IS TO BE REMOVED DAILY BY SHOVELING OR SWEEPING. SEDIMENT IS NOT TO BE WASHED DOWN STORM SEWER DRAINS.
4. STORM SEWER INLET PROTECTION IS TO BE IN PLACE, INSPECTED, AND CLEANED IF NECESSARY.
5. OTHER ASSOCIATED SEDIMENT CONTROL MEASURES ARE TO BE INSPECTED TO ENSURE GOOD WORKING CONDITION.

City of Colorado Springs
Stormwater Quality

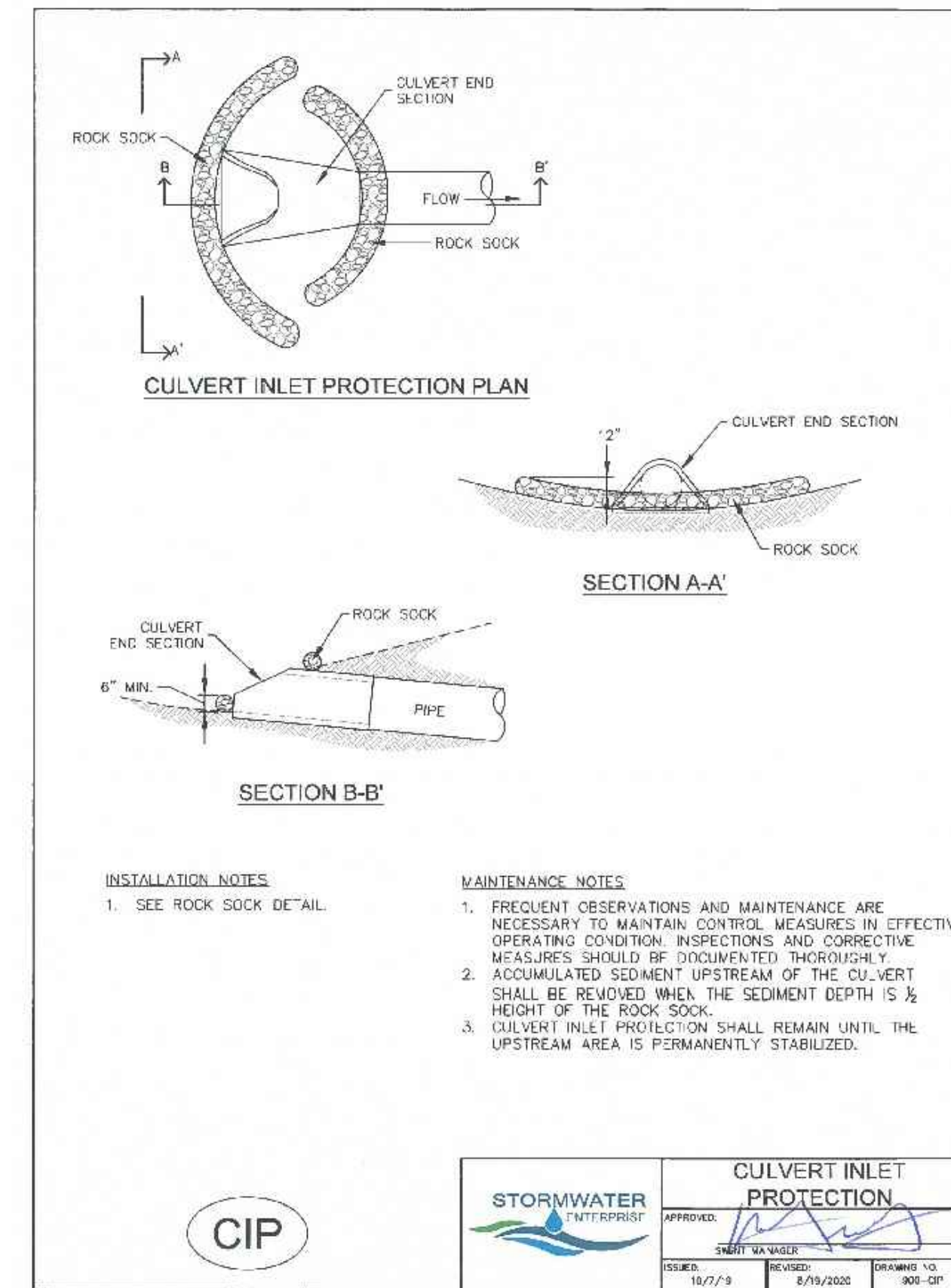
Figure VT-2
Vehicle Tracking
Application Examples

3-54



DS-3. ECB LINED SWALE (CUT AND FILL OR BERM)

November 2010 Urban Drainage and Flood Control District ED/DS-3
Urban Storm Drainage Criteria Manual Volume 3



GEC Checklist Item Z. Include details for the following BMP's. Examples of acceptable details for each are provided:

BMP	Detail # and Source		
	DCM (Vol 2: Chap 3.3)	MHFD (USDCM Vol 3: Chap 7)	COS - Stormwater Construction Manual (App E)
Mulching	MU-1	EC-4	X

SEED MIX NOTES:

DEVELOPED BY THE EL PASO COUNTY CONSERVATION DISTRICT

SEEDING RATE:
BROADCAST: 20-25 LBS/ACRE
DRILLED: 15-20 LBS/ACRE

MIX CONTAINS:

SPECIES	VARIETY	LBS. LIVE SEED PER ACRE
NATIVE BIG BLUESTEM	KAW, BISON, CHAMP	1.08
NATIVE LITTLE BLUESTEM	SCHIZACHYRIUM SCOPARIUM	0.12
NATIVE GREEN NEEDLEGRASS	LODROM	0.48
NATIVE WESTERN WHEATGRASS	ARRIBA, BARTON	1.60
NATIVE SIDEOATS GRAMA	VAUGHN, BUTTE, EL RENO, NINER	0.46
NATIVE SWITCHGRASS	BLACKWELL, GREENVILLE	0.20
NATIVE PRAIRIE SANDREED	GOSHEN, PRONGHORN	0.32
NATIVE YELLOW INDIANGRASS	CHEYENNE, HOLT, LLANO	0.51

REF. NO.	DATE	DESCRIPTION	BY

COMPUTER FILE MANAGEMENT

FILE NAME: S:\20.886.028 Trails PUDSP Major Amend\100 Dwg\104 Plan Sets\Construction Plans\GEC Plan\haul_route ECN01.dwg
 CTB FILE: ---
 PLOT DATE: May 1, 2023 11:50:44 AM
 THIS DRAWING IS CURRENT AS OF PLOT DATE AND MAY BE SUBJECT TO CHANGE.

SHEET NO.	TOTAL SHEETS	DESCRIPTION

BENCHMARK
 COLORADO SPRINGS UTILITIES (FIMS) MONUMENT F206
 A BERNTSEN TOP SECURITY MONUMENT SYSTEM WITH A 3.5-INCH DIAMETER ALUMINUM CAP IN A ROAD BOX, LOCATED ON THE NORTHWEST CORNER OF FONTAINE BOULEVARD AND POWERS BOULEVARD.
 ELEVATION - 5897.89' U.S. SURVEY FT

BASIS OF BEARING
 BEARINGS ARE BASED ON THE NORTH LINE OF THE NORTHWEST QUARTER OF SECTION 9, TOWNSHIP 15 SOUTH, RANGE 65 WEST OF THE 6TH P.M. SAID LINE BEARS S89°51'23"E FROM THE NORTHWEST CORNER OF SAID SECTION 9 (2 1/2" AULM. CAP PLS 17664) TO THE N 1/4 CORNER OF SAID SECTION 9 (3 1/2" AULM. CAP PLS 10377)

PREPARED BY:

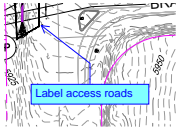
SEAL
PRELIMINARY
 THIS DRAWING HAS NOT BEEN APPROVED BY GOVERNING AGENCIES AND IS SUBJECT TO CHANGE

FOR AND ON BEHALF OF
 MATRIX DESIGN GROUP, INC.
 PROJECT NO. 23.886.078

TRAILS AT ASPEN RIDGE - STOCKPILE			
CONSTRUCTION DRAWINGS GRADING AND EROSION CONTROL PLANS			
EROSION CONTROL DETAILS			
DESIGNED BY: NMS	SCALE	DATE ISSUED: MAY 2023	DRAWING No.
DRAWN BY: KGI	HORIZ N/A	SHEET 5 OF 5	ECN02
CHECKED BY: NMS	VERT. N/A		

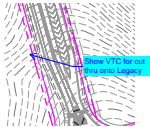
v1_Grading & Erosion Control Plan.pdf Markup Summary

Callout (3)



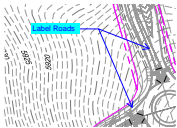
Subject: Callout
Page Label: [3] 3 GEC01
Author: Carlos
Date: 5/17/2023 5:06:32 PM
Status:
Color: ■
Layer:
Space:

Label access roads



Subject: Callout
Page Label: [3] 3 GEC01
Author: CDurham
Date: 5/24/2023 4:40:17 PM
Status:
Color: ■
Layer:
Space:

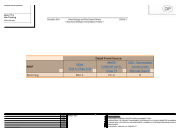
Show VTC for cut thru onto Legacy



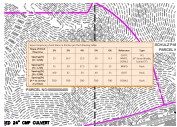
Subject: Callout
Page Label: [3] 3 GEC01
Author: CDurham
Date: 5/24/2023 4:40:45 PM
Status:
Color: ■
Layer:
Space:

Label Roads

Image (2)

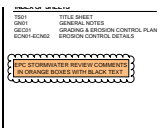


Subject: Image
Page Label: [5] 5 ECN02
Author: Glenn Reese - EPC Stormwater
Date: 5/16/2023 2:37:23 PM
Status:
Color: ■
Layer:
Space:



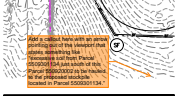
Subject: Image
Page Label: [3] 3 GEC01
Author: Glenn Reese - EPC Stormwater
Date: 5/16/2023 3:26:55 PM
Status:
Color: ■
Layer:
Space:

Stamp - Stormwater Comment Legend (1)



Subject: Stamp - Stormwater Comment Legend
Page Label: [1] 1 TS01
Author: Glenn Reese - EPC Stormwater
Date: 5/16/2023 2:45:47 PM
Status:
Color: ■
Layer:
Space:

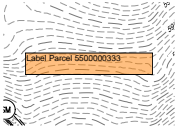
SW - Textbox with Arrow (1)



Subject: SW - Textbox with Arrow
Page Label: [3] 3 GEC01
Author: Glenn Reese - EPC Stormwater
Date: 5/16/2023 1:34:25 PM
Status:
Color: ■
Layer:
Space:

Add a callout here with an arrow pointing out of the viewport that states something like "excessive soil from Parcel 5509301134 just south of this Parcel 550920002 to be hauled to the proposed stockpile located in Parcel 5509301134."

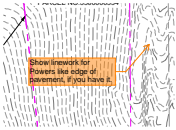
SW - Textbox (1)



Subject: SW - Textbox
Page Label: [3] 3 GEC01
Author: Glenn Reese - EPC Stormwater
Date: 5/16/2023 1:34:34 PM
Status:
Color: ■
Layer:
Space:

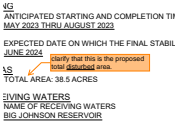
Label Parcel 5500000333

SW - Textbox with Arrow (3)



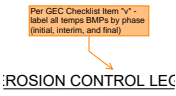
Subject: SW - Textbox with Arrow
Page Label: [3] 3 GEC01
Author: Glenn Reese - EPC Stormwater
Date: 5/16/2023 1:38:10 PM
Status:
Color: ■
Layer:
Space:

Show linework for Powers like edge of pavement, if you have it.



Subject: SW - Textbox with Arrow
Page Label: [2] 2 GN01
Author: Glenn Reese - EPC Stormwater
Date: 5/16/2023 2:34:09 PM
Status:
Color: ■
Layer:
Space:

clarify that this is the proposed total disturbed area.



Subject: SW - Textbox with Arrow
Page Label: [3] 3 GEC01
Author: Glenn Reese - EPC Stormwater
Date: 5/16/2023 2:34:57 PM
Status:
Color: ■
Layer:
Space:

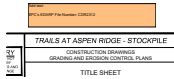
Per GEC Checklist Item "v" - label all temps BMPs by phase (initial, interim, and final)

SW - Textbox (2)



Subject: SW - Textbox
Page Label: [5] 5 ECN02
Author: Glenn Reese - EPC Stormwater
Date: 5/16/2023 2:38:13 PM
Status:
Color: ■
Layer:
Space:

GEC Checklist Item Z. Include details for the following BMP's. Examples of acceptable details for each are provided:

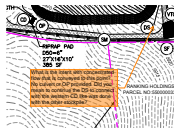


Subject: SW - Textbox
Page Label: [1] 1 TS01
Author: Glenn Reese - EPC Stormwater
Date: 5/16/2023 2:46:45 PM
Status:
Color: ■
Layer:
Space:

Add text:

EPC's EDARP File Number: CDR2312

SW - Textbox with Arrow (5)



Subject: SW - Textbox with Arrow
Page Label: [3] 3 GEC01
Author: Glenn Reese - EPC Stormwater
Date: 5/16/2023 3:24:52 PM
Status:
Color: ■
Layer:
Space:

What is the intent with concentrated flow that is conveyed to this point? No culvert or OP provided. Did you mean to continue the DS to connect with the western CD like was done with the other stockpile?



Subject: SW - Textbox with Arrow
Page Label: [3] 3 GEC01
Author: Glenn Reese - EPC Stormwater
Date: 5/16/2023 3:27:15 PM
Status:
Color: ■
Layer:
Space:

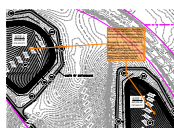
Check dams to be installed a minimum of every 1.5' of vertical fall. Notate spacing and/or include a table for multiple slopes, based on your selected detail, per the example table shown below.



Subject: SW - Textbox with Arrow
Page Label: [3] 3 GEC01
Author: Glenn Reese - EPC Stormwater
Date: 5/16/2023 3:30:14 PM
Status:
Color: ■
Layer:
Space:

Label grade of these steep slopes.

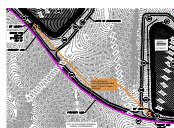
The relevant Soils Report referenced on the previous sheet (from SF192) does not discuss suitability of soils to be stockpiled and with such steep slopes. Add a note to this sheet addressing any height, slope, or compaction/moisture req's for the stockpile.



Subject: SW - Textbox with Arrow
Page Label: [3] 3 GEC01
Author: Glenn Reese - EPC Stormwater
Date: 5/16/2023 3:30:16 PM
Status:
Color: ■
Layer:
Space:

Why SM not shown on stockpiles? These areas will need to be temp and permanently stabilized during and after construction, respectively.

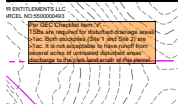
Depending on what you decide to do, you may want to add the following general note:
 All areas to be vegetated with permanent seeding should also be temporary stabilized via track rolling or some other means.



Subject: SW - Textbox with Arrow
Page Label: [3] 3 GEC01
Author: Glenn Reese - EPC Stormwater
Date: 5/16/2023 3:32:02 PM
Status:
Color: ■
Layer:
Space:

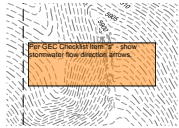
How will flow be conveyed past the haul road? Culvert? Texas crossing?

SW - Textbox (3)



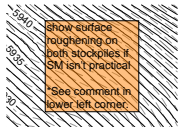
Subject: SW - Textbox
Page Label: [3] 3 GEC01
Author: Glenn Reese - EPC Stormwater
Date: 5/16/2023 3:34:59 PM
Status:
Color: ■
Layer:
Space:

Per GEC Checklist Item "x" - TSBs are required for disturbed drainage areas >1ac. Both stockpiles (Site 1 and Site 2) are >1ac. It is not acceptable to have runoff from several acres of untreated disturbed areas discharge to the park land south of this parcel.



Subject: SW - Textbox
Page Label: [3] 3 GEC01
Author: Glenn Reese - EPC Stormwater
Date: 5/24/2023 12:16:30 PM
Status:
Color: ■
Layer:
Space:

Per GEC Checklist Item "s" - show stormwater flow direction arrows.

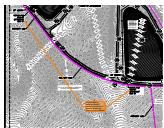


Subject: SW - Textbox
Page Label: [3] 3 GEC01
Author: Glenn Reese - EPC Stormwater
Date: 5/24/2023 12:17:28 PM
Status:
Color: ■
Layer:
Space:

show surface roughening on both stockpiles if SM isn't practical

*See comment in lower left corner.

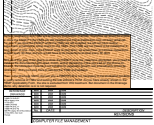
SW - Textbox with Arrow (1)



Subject: SW - Textbox with Arrow
Page Label: [3] 3 GEC01
Author: Glenn Reese - EPC Stormwater
Date: 5/24/2023 12:25:52 PM
Status:
Color: ■
Layer:
Space:

Provide fabric or bedding material beneath riprap pads, if deemed necessary based on soil conditions.

SW - Textbox (1)



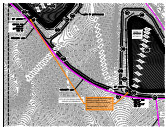
Subject: SW - Textbox
Page Label: [3] 3 GEC01
Author: Glenn Reese - EPC Stormwater
Date: 5/24/2023 12:28:03 PM
Status:
Color: ■
Layer:
Space:

Surface roughening and TSBs are temporary stabilization methods. Therefore we would be unable to close the ESQCP if the TSBs are still installed and if final stabilization has not been achieved. For one, if we close the ESQCP while the TSBs are still installed, we will not have routine inspections scheduled to come check on the TSBs. Plus TSBs are not meant to be installed for a long period of time. Also, if the ESQCP were to stay open, we would have to continue inspections at least every 90 days and you would have to do inspections at least every 30 days.

With all of that said, if the goal is to close the ESQCP once the material is stockpiled, you'd need to stabilize the disturbances with seed, mulch, and/or blanketing. If like you said on the phone on 5/24/23, the stockpiled material is not suitable for vegetation growth, soil amendments would be necessary. And you'd also have to remove the TSBs and address.

Then in the Drainage Memo discuss why a PBMP/PCM is not necessary in the stockpiled condition to justify removal of TSBs and leaving the site without a PCM. As you have already shown in the PBMP Applicability Form, the site is excluded from WQ treatment. But document in the Drainage Memo why detention is or is not required.

SW - Textbox with Arrow (1)



Subject: SW - Textbox with Arrow
Page Label: [3] 3 GEC01
Author: Glenn Reese - EPC Stormwater
Date: 5/24/2023 12:28:10 PM
Status:
Color: ■
Layer:
Space:

There is >1ac of disturbed areas tributary to these 2 points. Therefore TSBs are necessary.

*See comment in lower left corner.

Text Box (3)

FILE

S

OWNER'S STATEMENT:
I, THE OWNER/REGULATED PARTY, HAVE READ AND COMPLY WITH THE
THE GRADING AND EROSION CONTROL PLAN.

Subject: Text Box
Page Label: [1] 1 TS01
Author: CDurham
Date: 5/24/2023 4:36:08 PM
Status:
Color: ■
Layer:
Space:

Will need signatures for commercial site and owners on west side of Powers, as grading operations will be taking part on their property.



Subject: Text Box
Page Label: [3] 3 GEC01
Author: CDurham
Date: 5/24/2023 4:41:20 PM
Status:
Color: ■
Layer:
Space:

Show anticipated truck route through site

LIMITS OF DISTURBANCE/
CONSTRUCTION SITE BOUNDARY
PROPOSED TEMPORARY ROAD

Note: Will need agreement with Waterview Commercial Investors for use of their site for haul/truck route. Also, an official "haul route" may be needed for use of Bradley Road. Information is being forwarded to EPC Capital Projects and will let you know once we have received any additional information regarding this requirement.

Subject: Text Box
Page Label: [3] 3 GEC01
Author: CDurham
Date: 5/31/2023 10:14:09 AM
Status:
Color: ■
Layer:
Space:

Note: Will need agreement with Waterview Commercial Investors for use of their site for haul/truck route. Also, an official "haul route" may be needed for use of Bradley Road. Information is being forwarded to EPC Capital Projects and will let you know once we have received any additional information regarding this requirement.