

INDEX OF SHEETS	SHEET No.	
TS01	TITLE SHEET	1
GN01	GENERAL NOTES	2
GEC01	GRADING & EROSION CONTROL PLAN	3
HR01	HAULING ROUTE PLAN	4
ECN01-ECN03	EROSION CONTROL DETAILS	5-8



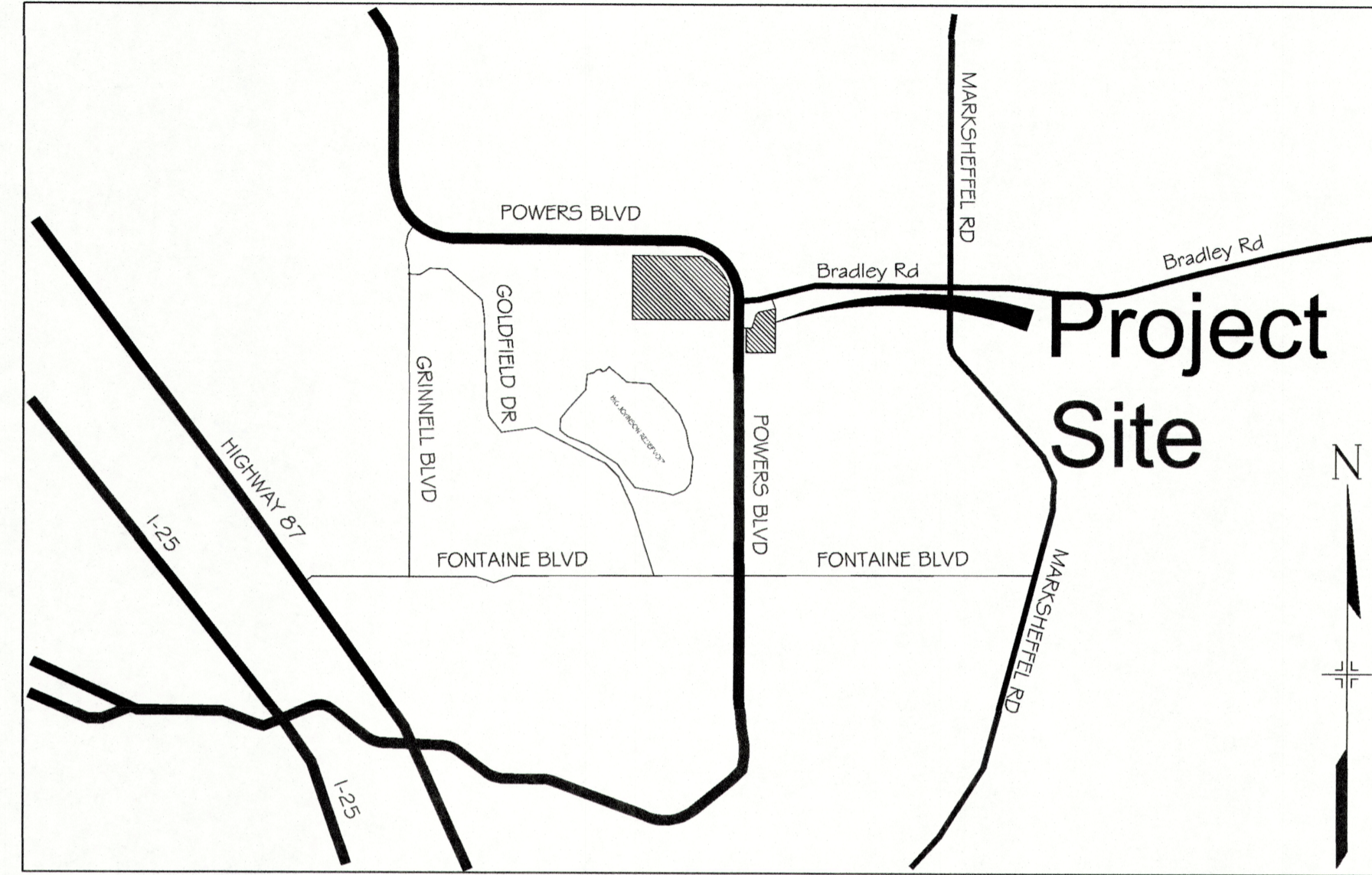
Know what's below.  
Call before you dig.

# TRAILS AT ASPEN RIDGE - STOCKPILE

COLORADO SPRINGS, COLORADO

## GRADING & EROSION CONTROL PLANS

MAY 2023



VICINITY MAP

N.T.S.

OWNER/DEVELOPER	COLA, LLC 555 MIDDLE CREEK PARKWAY, SUITE 380 COLORADO SPRINGS, CO 80921 (719) 382-9433
CIVIL ENGINEER	MATRIX DESIGN GROUP 2435 RESEARCH PARKWAY, SUITE 300 COLORADO SPRINGS, CO 80920 NICOLE SCHANEL, (719) 659 6141
WATER & SANITARY SEWER	WIDEFIELD WATER AND SANITATION DISTRICT 8495 FONTAINE BOULEVARD COLORADO SPRINGS, CO 80925 ROBERT BANNISTER, (719) 390-7111
ELECTRIC	MOUNTAINVIEW ELECTRIC ASSOCIATION (719) 495-2283
GAS	COLORADO SPRINGS UTILITIES 1521 HANCOCK EXPRESSWAY COLORADO SPRINGS, CO MARY HOAGLUND (719) 668-4083
STREET	EL PASO COUNTY PUBLIC SERVICES DEPARTMENT (719) 520-6460
DRAINAGE	EL PASO COUNTY PUBLIC SERVICES DEPARTMENT (719) 520-6460
FIRE DEPARTMENT	SECURITY FIRE DEPARTMENT 400 SECURITY BOULEVARD SECURITY, CO 80911 (719) 392-7121

OWNER'S STATEMENT:

I, THE OWNER/DEVELOPER HAVE READ AND COMPLY WITH THE REQUIREMENTS OF THE GRADING AND EROSION CONTROL PLAN.

*Tim Buschar*  
TIM BUSCHAR  
DIRECTOR OF LAND ACQUISITION AND DEVELOPMENT  
7/27/23  
DATE

*Randall R. Steichen*  
Randall R. Steichen  
CYGNET LAND, LLC  
7/27/2023  
DATE

*Heath A. Herber, Mgr*  
HEATH A. HERBER, MGR  
WATERVIEW COMMERCIAL INVESTORS, LLC  
7/27/2023  
DATE

ENGINEER'S STATEMENT:

THIS GRADING AND EROSION CONTROL PLAN WAS PREPARED UNDER MY DIRECTION AND SUPERVISION AND IS CORRECT TO THE BEST OF MY KNOWLEDGE AND BELIEF. SAID PLAN HAS BEEN PREPARED ACCORDING TO THE CRITERIA ESTABLISHED BY THE COUNTY FOR GRADING AND EROSION CONTROL PLANS. I ACCEPT RESPONSIBILITY FOR ANY LIABILITY CAUSED BY ANY NEGLIGENT ACTS, ERRORS OR OMISSIONS ON MY PART IN PREPARING THIS REPORT.

*Nicole Schanel*  
NICOLE SCHANEL, PE #52434  
08/15/2023  
DATE

EL PASO COUNTY:

COUNTY PLAN REVIEW IS PROVIDED ONLY FOR GENERAL CONFORMANCE WITH COUNTY DESIGN CRITERIA. THE COUNTY IS NOT RESPONSIBLE FOR THE ACCURACY AND ADEQUACY OF THE DESIGN, DIMENSIONS, AND/OR ELEVATIONS WHICH SHALL BE CONFIRMED AT THE JOB SITE. THE COUNTY THROUGH THE APPROVAL OF THIS DOCUMENT ASSUMES NO RESPONSIBILITY FOR COMPLETENESS AND/OR ACCURACY OF THIS DOCUMENT.

FILED IN ACCORDANCE WITH THE REQUIREMENTS OF THE EL PASO COUNTY LAND DEVELOPMENT CODE, DRAINAGE CRITERIA MANUAL, VOLUMES 1 AND 2, AND ENGINEERING CRITERIA MANUAL AS AMENDED.

IN ACCORDANCE WITH ECM SECTION 1.12, THESE CONSTRUCTION DOCUMENTS WILL BE VALID FOR CONSTRUCTION FOR A PERIOD OF 2 YEARS FROM THE DATE SIGNED BY THE EL PASO COUNTY ENGINEER. IF CONSTRUCTION HAS NOT STARTED WITHIN THOSE 2 YEARS, THE PLANS WILL NEED TO BE RESUBMITTED FOR APPROVAL, INCLUDING PAYMENT OF REVIEW FEES AT THE PLANNING AND COMMUNITY DEVELOPMENT DIRECTORS DISCRETION.

**Approved**  
By: **Gilbert LaForce, P.E.**  
Engineering Manager  
Date: **08/14/2023 1:49:43 PM**  
El Paso County Department of Public Works



JOSHUA PALMER, P.E.  
COUNTY ENGINEER / E

EPC'S EDARP FILE NUMBER: CDR2312

REFERENCE DRAWINGS	No.	DATE	DESCRIPTION	BY
X-Title-GEC	###	###		###
X-886-PR SITE-F2	###	###		###
10415-Ex-886	###	###		###
X-886-PR SITE-F1	###	###		###
X-886-PR SITE-F3	###	###		###
X-886-EX-BASE	###	###		###
X-886-EX-SURVEY	###	###		###
886-PR Legacy Drive-Roundabout				
886-PR Legacy Drive				
haul_route GEC				
X-Title-GEC-haul route				

**COMPUTER FILE MANAGEMENT**  
FILE NAME: S:\20.886.028 Trails PUDSP Major Amend\100 Dwg\104 Plan Sets\Construction Plans\GEC Plan\haul\_route TS01.dwg  
CTB FILE: ---  
PLOT DATE: July 27, 2023 11:14:03 AM  
THIS DRAWING IS CURRENT AS OF PLOT DATE AND MAY BE SUBJECT TO CHANGE.

SHEET KEY

**BENCHMARK**  
COLORADO SPRINGS UTILITIES (FIMS) MONUMENT F206  
A BERTNSEN TOP SECURITY MONUMENT SYSTEM WITH A 3.5-INCH DIAMETER ALUMINUM CAP IN A ROAD BOX, LOCATED ON THE NORTHWEST CORNER OF FONTAINE BOULEVARD AND POWERS BOULEVARD.  
ELEVATION - 5897.89' U.S. SURVEY FT

**BASIS OF BEARING**  
BEARINGS ARE BASED ON THE NORTH LINE OF THE NORTHWEST QUARTER OF SECTION 9, TOWNSHIP 15 SOUTH, RANGE 65 WEST OF THE 6TH P.M. SAID LINE BEARS S89°51'23"E FROM THE NORTHWEST CORNER OF SAID SECTION 9 (2 1/2' AULM. CAP PLS 17664) TO THE N 1/4 CORNER OF SAID SECTION 9 (3 3/4' AULM. CAP PLS 10377)

PREPARED BY:  
**Matrix**

FOR AND ON BEHALF OF  
MATRIX DESIGN GROUP, INC.  
PROJECT No. 23.886.078

TRAILS AT ASPEN RIDGE - STOCKPILE

CONSTRUCTION DRAWINGS  
GRADING AND EROSION CONTROL PLANS

TITLE SHEET

DESIGNED BY: NMS	SCALE:	DATE ISSUED:	MAY 2023	DRAWING No.	
DRAWN BY: KGI	HORIZ. N/A	SHEET	1 OF 8	TS01	
CHECKED BY: RA	VERT. N/A				

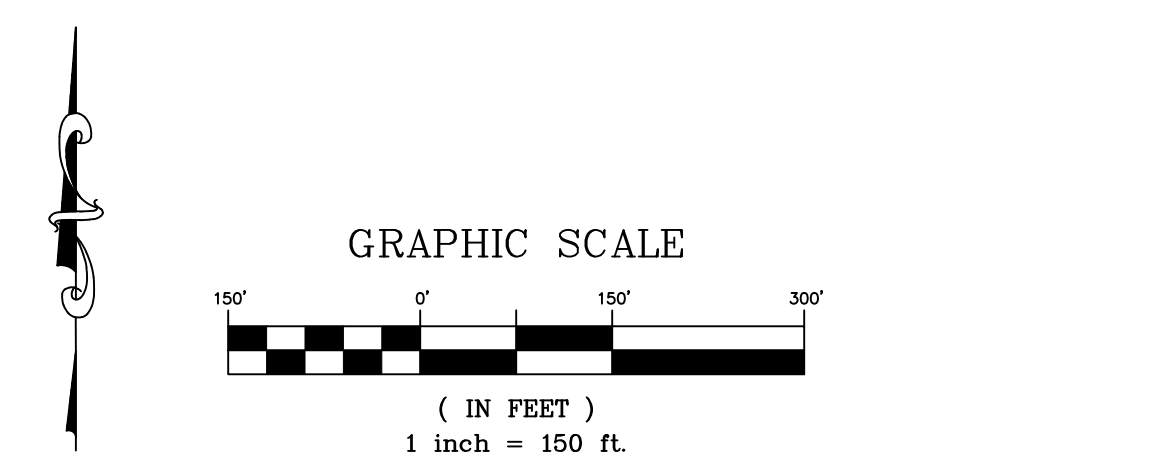




Know what's below.  
Call before you dig.

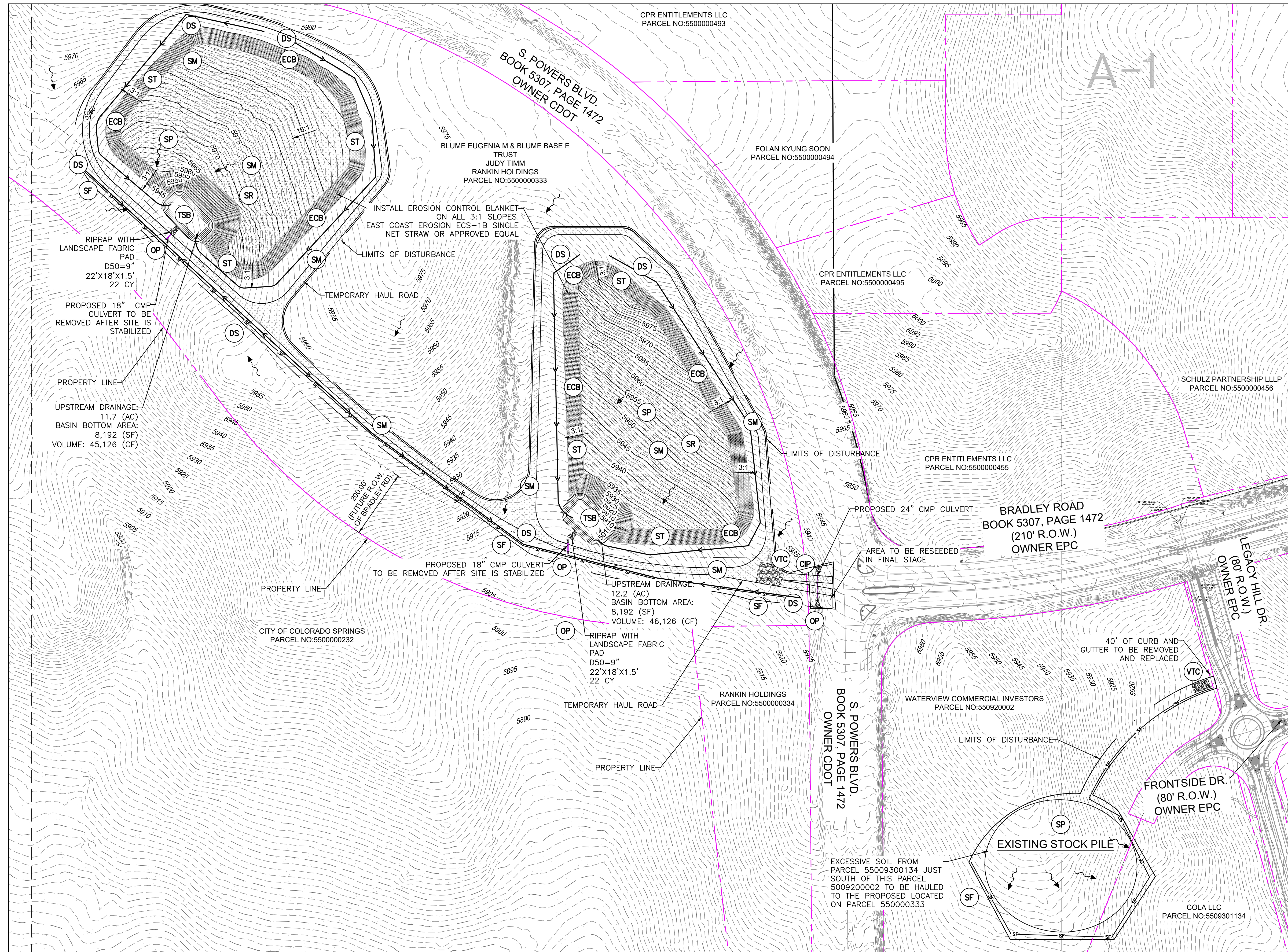
**EROSION CONTROL LEGEND**

INITIAL BMPs	
	SILT FENCE
	VEHICLE TRACKING CONTROL
	TEMPORARY SEDIMENT BASINS
INTERIM BMPs	
	DRAINAGE SWALE WITH EROSION CONTROL BLANKET
	STOCKPILE MANAGEMENT
	SURFACE ROUGHENING ON STOCKPILES SLOPES FLATTER THAN 3:1
	SLOPE TRACKING ON 3:1 SLOPES
FINAL BMPs	
	SEEDING AND MULCHING
	EROSION CONTROL BLANKET IN FINAL STAGE
	CULVERT INLET PROTECTION/ OUTLET PROTECTION
	(TEMPORARY) SEDIMENT BASINS TO BE LEFT IN PLACE
GENERAL ITEMS	
	PROPOSED CONTOURS
	EXISTING CONTOURS
	SLOPE LABEL
	PROPERTY LINE
	LIMITS OF DISTURBANCE/ CONSTRUCTION SITE BOUNDARY
	PROPOSED TEMPORARY ROAD



- NOTES:
- ALL DRAINAGE SWALES SHALL HAVE A MINIMUM LONGITUDINAL SLOPE OF 0.5%, MINIMUM 1.5' DEPTH, AND MAXIMUM 3:1 SIDE SLOPES. LINE SWALES WITH EAST COAST EROSION ECC-2B DOUBLE NET COCONUT BIODEGRADABLE ROLLED EROSION CONTROL PRODUCT OR APPROVED EQUAL.
  - ALL EROSION CONTROL BLANKET SHALL BE INSPECTED 24-MONTHS AFTER INSTALLATION. EROSION CONTROL BLANKET MAY BE REQUIRED TO RE-INSTALLED PER MANUFACTURER SPECIFICATIONS. CONTRACTOR TO USE SLOPE TRACKING OR EROSION CONTROL BLANKET ON SLOPES 3:1 OR GREATER PER CITY STANDARDS.
  - ALL EROSION CONTROL MEASURES REQUIRED WITHIN THE INITIAL AND INTERIM PHASE OF THIS PLAN ARE TO REMAIN UNTIL FINAL STABILIZATION IS ACHIEVED UNLESS OTHERWISE NOTED.
  - AREAS WITHIN THE SITE THAT ARE INACTIVE FOR 60 DAYS OR GREATER TO BE STABILIZED WITH NATIVE SEED, AS SHOWN ON SHEET ECN03.
  - CONTRACTOR TO PROVIDE DOCUMENTATION FROM GEOTECHNICAL ENGINEER TO CONFIRM STOCKPILES MAY HAVE 3:1 SIDE SLOPES WITH NO COMPACTION PRIOR TO PLACEMENT OF EROSION CONTROL BLANKET.

EPC'S EDARP FILE NUMBER: CDR2312



REFERENCE DRAWINGS	NO.	DATE	DESCRIPTION	BY
X-886-EX SURVEY	####	####	####	####
886-pr legacy drive	####	####	####	####
X-Title-GEC	####	####	####	####
X-886-EX-BASE	####	####	####	####
X-886-PR SITE_F1	####	####	####	####
X-886-PR SITE_F2	####	####	####	####
886-PR Legacy Drive-Roundabout	####	####	####	####
X-Title-GEC-haul route	####	####	####	####
Parade	####	####	####	####

COMPUTER FILE MANAGEMENT	
FILE NAME:	S:\20.886.028 Trails PUDSP Major Amend\100 Dwg\104 Plan Sets\Construction Plans\GEC Plan\haul_route GEC.dwg
CTB FILE:	---
PLOT DATE:	July 27, 2023 11:14:21 AM
THIS DRAWING IS CURRENT AS OF PLOT DATE AND MAY BE SUBJECT TO CHANGE.	

**SHEET KEY**

**BENCHMARK**  
COLORADO SPRINGS UTILITIES (FIMS) MONUMENT F206  
A BERNTSEN TOP SECURITY MONUMENT SYSTEM WITH A 3.5-INCH DIAMETER ALUMINUM CAP IN A ROAD BOX, LOCATED ON THE NORTHWEST CORNER OF FONTAINE BOULEVARD AND POWERS BOULEVARD.  
ELEVATION - 5897.89' U.S. SURVEY FT

**BASIS OF BEARING**  
BEARINGS ARE BASED ON THE NORTH LINE OF THE NORTHWEST QUARTER OF SECTION 9, TOWNSHIP 15 SOUTH, RANGE 65 WEST OF THE 6TH P.M. SAID LINE BEARS S89°51'23"E FROM THE NORTHWEST CORNER OF SAID SECTION 9 (2 1/2" AULM. CAP PLS 17664) TO THE N 1/4 CORNER OF SAID SECTION 9 (3 1/2" AULM. CAP PLS 10377)

PREPARED BY:

SEAL

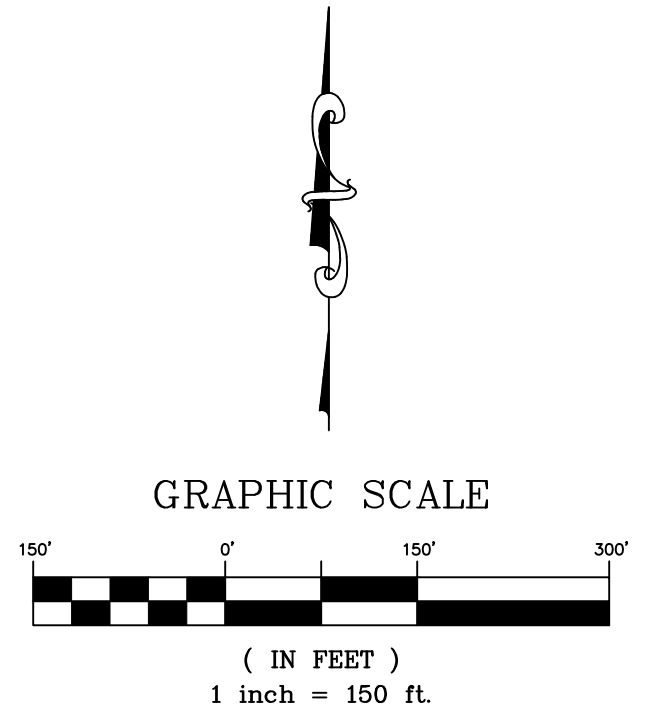
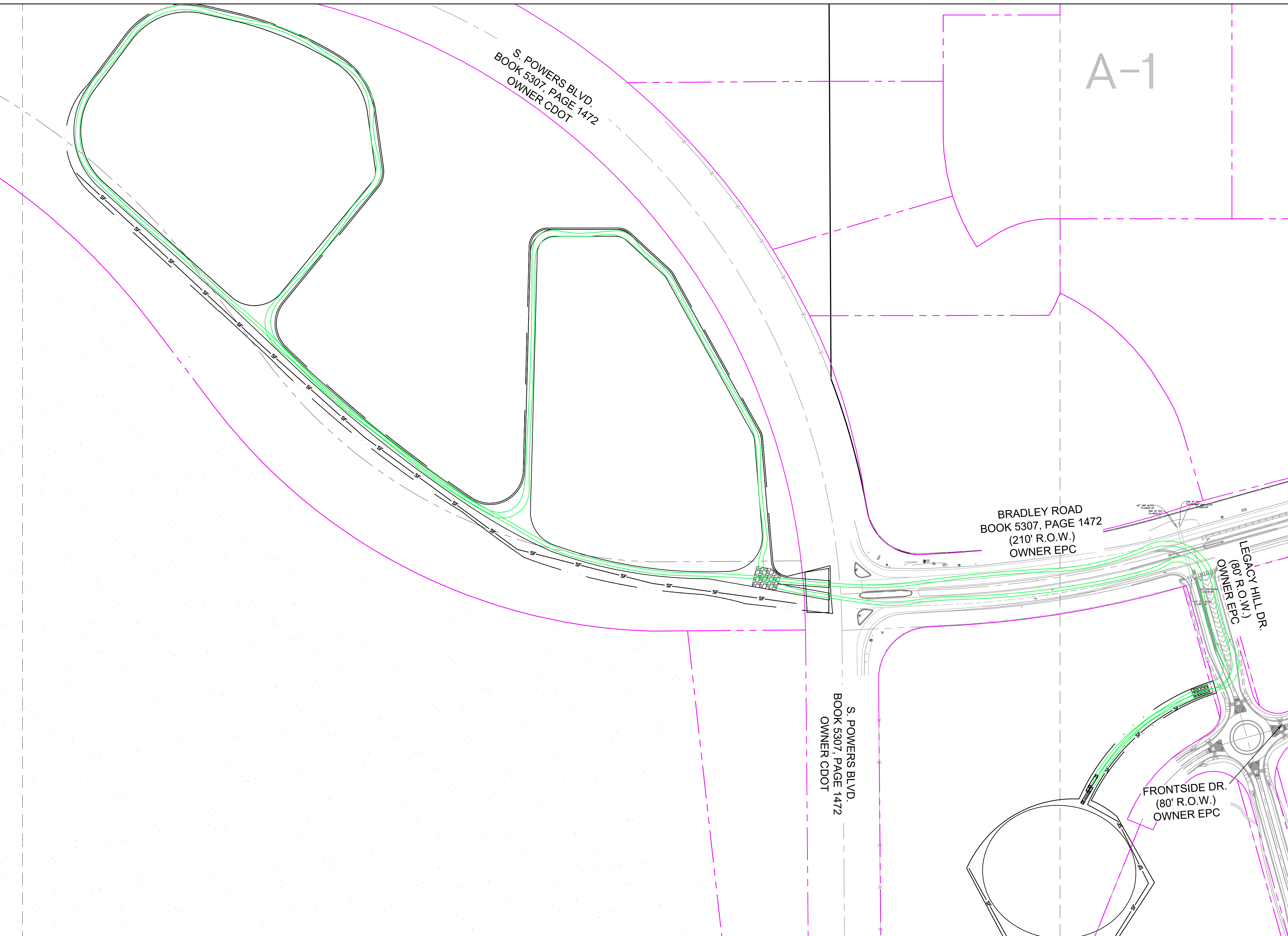
FOR AND ON BEHALF OF  
MATRIX DESIGN GROUP, INC.  
PROJECT No. 23.886.078

<b>TRAILS AT ASPEN RIDGE - STOCKPILE</b>			
CONSTRUCTION DRAWINGS GRADING AND EROSION CONTROL PLANS			
<b>GRADING AND EROSION CONTROL PLAN</b>			
DESIGNED BY:	NMS	SCALE	DATE ISSUED: MAY 2023
DRAWN BY:	TRS	HORIZ N/A	DRAWING No. GEC01
CHECKED BY:	NMS	VERT. N/A	SHEET 3 OF 8



Know what's below.  
Call before you dig.

A-1



EPC'S EDARP FILE NUMBER: CDR2312

REFERENCE DRAWINGS	NO.	DATE	DESCRIPTION	BY
X-886-EX SURVEY	###	###		###
886-pr legacy drive	###	###		###
X-Title-GEC	###	###		###
X-886-EX-BASE	###	###		###
X-886-PR SITE_F1	###	###		###
X-886-PR SITE_F2	###	###		###
886-PR Legacy Drive-Roundabout	###	###		###
X-Title-GEC-haul route	###	###		###
Parade	###	###		###

COMPUTER FILE MANAGEMENT	
FILE NAME:	S:\20.886.028 Trails PUDSP Major Amend\100 Dwg\104 Plan Sets\Construction Plans\GEC Plan\haul_route GEC.dwg
CTB FILE:	---
PLOT DATE:	July 27, 2023 11:14:23 AM
THIS DRAWING IS CURRENT AS OF PLOT DATE AND MAY BE SUBJECT TO CHANGE.	

SHEET KEY	
###	BY

**BENCHMARK**  
 COLORADO SPRINGS UTILITIES (FIMS) MONUMENT F206  
 A BERNTSEN TOP SECURITY MONUMENT SYSTEM WITH A 3.5-INCH DIAMETER ALUMINUM CAP IN A ROAD BOX, LOCATED ON THE NORTHWEST CORNER OF FONTAINE BOULEVARD AND POWERS BOULEVARD.  
 ELEVATION - 5897.89' U.S. SURVEY FT

**BASIS OF BEARING**  
 BEARINGS ARE BASED ON THE NORTH LINE OF THE NORTHWEST QUARTER OF SECTION 9, TOWNSHIP 15 SOUTH, RANGE 65 WEST OF THE 6TH P.M. SAID LINE BEARS S89°51'23"E FROM THE NORTHWEST CORNER OF SAID SECTION 9 (2 1/2" AULM. CAP PLS 17664) TO THE N 1/4 CORNER OF SAID SECTION 9 (3 1/2" AULM. CAP PLS 10377)

PREPARED BY:

SEAL

FOR AND ON BEHALF OF  
 MATRIX DESIGN GROUP, INC.  
 PROJECT No. 23.886.078

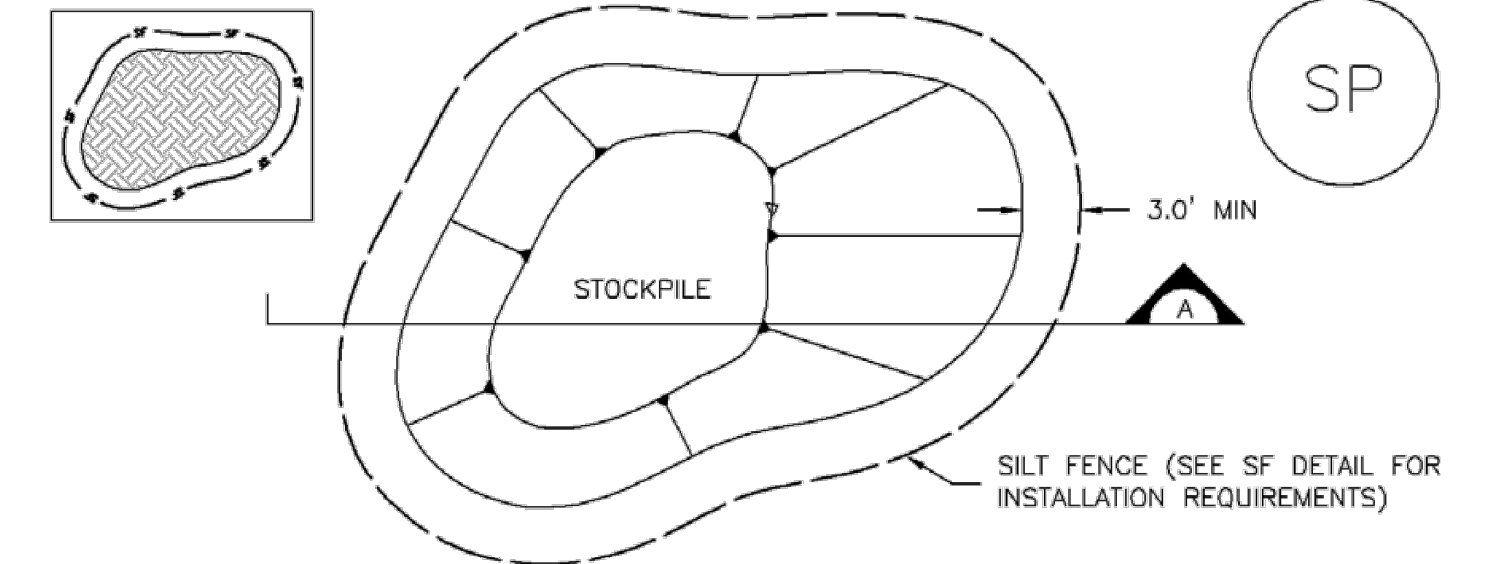
TRAILS AT ASPEN RIDGE - STOCKPILE					
CONSTRUCTION DRAWINGS GRADING AND EROSION CONTROL PLANS					
HAUL ROUTE PLAN					
DESIGNED BY:	NMS	SCALE	DATE ISSUED:	MAY 2023	DRAWING No.
DRAWN BY:	TRS	HORIZ	N/A		
CHECKED BY:	NMS	VERT.	N/A	SHEET	4 OF 8
					HR01



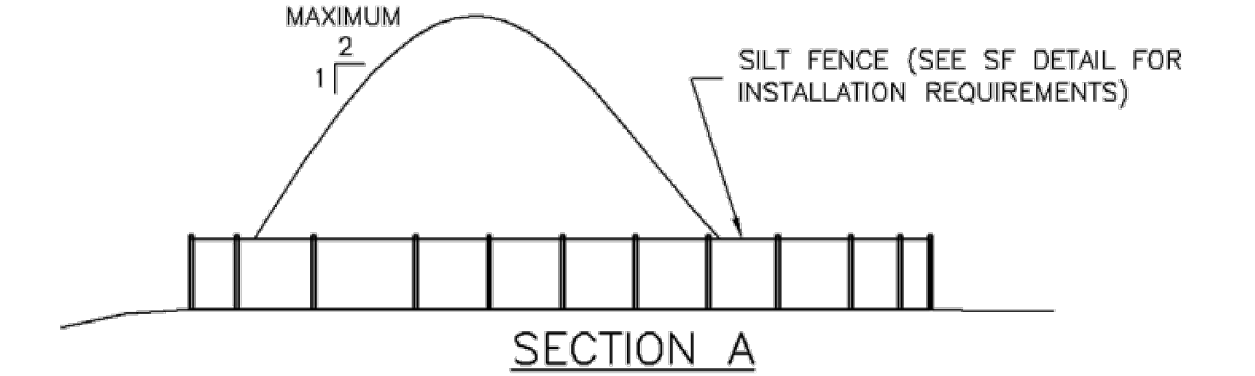
Know what's below.  
Call before you dig.

**Stockpile Management (SP)**

**MM-2**



**STOCKPILE PROTECTION PLAN**



**SP-1. STOCKPILE PROTECTION**

**STOCKPILE PROTECTION INSTALLATION NOTES**

- SEE PLAN VIEW FOR:
  - LOCATION OF STOCKPILES.
  - TYPE OF STOCKPILE PROTECTION.
- INSTALL PERIMETER CONTROLS IN ACCORDANCE WITH THEIR RESPECTIVE DESIGN DETAILS. SILT FENCE IS SHOWN IN THE STOCKPILE PROTECTION DETAILS; HOWEVER, OTHER TYPES OF PERIMETER CONTROLS INCLUDING SEDIMENT CONTROL LOGS OR ROCK SOCKS MAY BE SUITABLE IN SOME CIRCUMSTANCES. CONSIDERATIONS FOR DETERMINING THE APPROPRIATE TYPE OF PERIMETER CONTROL FOR A STOCKPILE INCLUDE WHETHER THE STOCKPILE IS LOCATED ON A PERVIOUS OR IMPERVIOUS SURFACE, THE RELATIVE HEIGHTS OF THE PERIMETER CONTROL AND STOCKPILE, THE ABILITY OF THE PERIMETER CONTROL TO CONTAIN THE STOCKPILE WITHOUT FAILING IN THE EVENT THAT MATERIAL FROM THE STOCKPILE SHIFTS OR SLUMPS AGAINST THE PERIMETER, AND OTHER FACTORS.
- STABILIZE THE STOCKPILE SURFACE WITH SURFACE ROUGHENING, TEMPORARY SEEDING AND MULCHING, EROSION CONTROL BLANKETS, OR SOIL BINDERS. SOILS STOCKPILED FOR AN EXTENDED PERIOD (TYPICALLY FOR MORE THAN 60 DAYS) SHOULD BE SEEDED AND MULCHED WITH A TEMPORARY GRASS COVER ONCE THE STOCKPILE IS PLACED (TYPICALLY WITHIN 14 DAYS). USE OF MULCH ONLY OR A SOIL BINDER IS ACCEPTABLE IF THE STOCKPILE WILL BE IN PLACE FOR A MORE LIMITED TIME PERIOD (TYPICALLY 30-60 DAYS).
- FOR TEMPORARY STOCKPILES ON THE INTERIOR PORTION OF A CONSTRUCTION SITE, WHERE OTHER DOWNGRADEMENT CONTROLS, INCLUDING PERIMETER CONTROL, ARE IN PLACE, STOCKPILE PERIMETER CONTROLS MAY NOT BE REQUIRED.

**SILT FENCE NOTES**

**SILT FENCE INSTALLATION NOTES:**

- SILT FENCE MUST BE PLACED AWAY FROM THE TOE OF THE SLOPE TO ALLOW FOR WATER PONDING. SILT FENCE AT TOP OF A SLOPE SHOULD BE INSTALLED IN A FLAT LOCATION AT LEAST SEVERAL FEET (2-5 FT) FROM THE TOE OF THE SLOPE TO ALLOW ROOM FOR PONDING AND DEPOSITION.
- A UNIFORM 6" x 4" ANCHOR TRENCH SHALL BE EXCAVATED USING TRENCHER OR SILT FENCE INSTALLATION DEVICE. NO ROAD GRADERS, BACKHOES, OR SIMILAR EQUIPMENT SHALL BE USED.
- COMPACT ANCHOR TRENCH BY HAND OR WITH A "JUMPING JACK" OR BY WHEEL ROLLING. COMPACTION SHALL BE SUCH THAT SILT FENCE RESISTS BEING PULLED OUT OF ANCHOR TRENCH BY HAND.
- SILT FENCE SHALL BE PULLED TIGHT AS IT IS ANCHORED TO THE STAKES. THERE SHOULD BE NO NOTICEABLE SAG BETWEEN STAKES AFTER IT HAS BEEN ANCHORED TO THE STAKES.
- SILT FENCE FABRIC SHALL BE ANCHORED TO THE STAKES USING 1" HEAVY DUTY STAPLES OR NAILS WITH 1" HEADS. STAPLES AND NAILS SHOULD BE PLACED 3" ALONG THE FABRIC DOWN THE STAKE.
- AT THE END OF A RUN OF SILT FENCE ALONG A CONTOUR, THE SILT FENCE SHOULD BE TURNED PERPENDICULAR TO THE CONTOUR TO CREATE A "J-HOOK" THE "J-HOOK" EXTENDING PERPENDICULAR TO THE CONTOUR SHOULD BE OF SUFFICIENT LENGTH TO KEEP RUNOFF FROM FLOWING AROUND THE END OF THE SILT FENCE (TYPICALLY 10' - 20').
- SILT FENCE SHALL BE IN STALLED PRIOR TO ANY LAND DISTURBING ACTIVITIES.

**SILT FENCE MAINTENANCE NOTES:**

- INSPECT BMPs EACH WORKDAY, AND MAINTAIN THEM IN EFFECTIVE OPERATING CONDITION. MAINTENANCE OF BMPs SHOULD BE PROACTIVE, NOT REACTIVE. INSPECT BMPs AS SOON AS POSSIBLE (AND ALWAYS WITHIN 24 HOURS) FOLLOWING A STORM THAT CAUSES SURFACE EROSION, AND PERFORM NECESSARY MAINTENANCE.
- FREQUENT OBSERVATIONS AND MAINTENANCE ARE NECESSARY TO MAINTAIN BMPs IN EFFECTIVE OPERATING CONDITION. INSPECTIONS AND CORRECTIVE MEASURES SHOULD BE DOCUMENTED THOROUGHLY.
- WHERE BMPs HAVE FAILED, REPAIR OR REPLACEMENT SHOULD BE INITIATED UPON DISCOVERY OF THE FAILURE.
- SEDIMENT ACCUMULATED UPSTREAM OF THE SILT FENCE SHALL BE REMOVED AS NEEDED TO MAINTAIN FUNCTIONALITY OF THE BMP. TYPICALLY WHEN DEPTH OF ACCUMULATED SEDIMENTS IS APPROXIMATELY 6".
- REPAIR OR REPLACE SILT FENCE WHEN THERE ARE SIGN OF WEAR, SUCH AS SAGGING, TEARING, OR COLLAPSE.
- SILT FENCE IS TO REMAIN IN PLACE UNTIL THE UPSTREAM DISTURBED AREA IS STABILIZED AND APPROVED BY THE LOCAL JURISDICTION, OR IS REPLACED BY AN EQUIVALENT PERIMETER SEDIMENT CONTROL BMP.
- WHEN SILT FENCE IS REMOVED, ALL DISTURBED AREAS SHALL BE COVERED WITH TOP SOIL, SEEDED AND MULCHED OR OTHERWISE STABILIZED AS APPROVED BY LOCAL JURISDICTION.

**Figure SC-1  
Silt Fence**  
Urban Drainage and Flood Control District  
Urban Storm Drainage Criteria Manual Volume 3

**TABLE OP-1. TEMPORARY OUTLET PROTECTION SIZING TABLE**

PIPE DIAMETER, Dp (INCHES)	DISCHARGE, Q (CFS)	APRON LENGTH, La (FT)	RIPRAP D50 DIAMETER MIN (INCHES)
8	2.5	5	4
	5	10	6
12	5	10	4
	10	13	6
18	10	10	6
	20	16	9
	30	23	12
	40	26	16
24	30	16	9
	40	26	9
	50	28	12
	60	30	16

**OP-1. TEMPORARY OUTLET PROTECTION**

**TEMPORARY OUTLET PROTECTION**

**INSTALLATION NOTES:**

- SEE PLAN VIEW FOR:
  - LOCATION OF OUTLET PROTECTION.
  - DIMENSIONS OF OUTLET PROTECTION.
- DETAIL IS INTENDED FOR PIPES WITH SLOPE ≤ 10%. ADDITIONAL EVALUATION OF RIPRAP SIZING AND OUTLET PROTECTION DIMENSIONS REQUIRED FOR STEEPER SLOPES.
- TEMPORARY OUTLET PROTECTION INFORMATION IS FOR OUTLETS INTENDED TO BE UTILIZED LESS THAN 2 YEARS.

**MAINTENANCE NOTES:**

- INSPECT BMPs EACH WORKDAY, AND MAINTAIN THEM IN EFFECTIVE OPERATING CONDITION. MAINTENANCE OF BMPs SHOULD BE PROACTIVE, NOT REACTIVE. INSPECT BMPs AS SOON AS POSSIBLE (AND ALWAYS WITHIN 24 HOURS) FOLLOWING A STORM THAT CAUSES SURFACE EROSION, AND PERFORM NECESSARY MAINTENANCE.
- FREQUENT OBSERVATIONS AND MAINTENANCE ARE NECESSARY TO MAINTAIN BMPs IN EFFECTIVE OPERATING CONDITION. INSPECTIONS AND CORRECTIVE MEASURES SHOULD BE DOCUMENTED THOROUGHLY.
- WHERE BMPs HAVE FAILED, REPAIR OR REPLACEMENT SHOULD BE INITIATED UPON DISCOVERY OF THE FAILURE.

**Figure EC-8  
Temporary Outlet Protection**  
Urban Drainage and Flood Control District  
Urban Storm Drainage Criteria Manual Volume 3

**INSTALLATION NOTES:**

- SURFACE ROUGHENING MAY BE USED IN AREAS FLATTER THAN 3:1. INSTALL FURROWS ALONG CONTOUR TO INTERCEPT SHEET FLOW.
- SURFACE ROUGHENING MAY BE ACCOMPLISHED BY FURROWING, SCARIFYING, RIPPING OR DISKING THE SOIL.
- FURROWS MUST BE A MINIMUM OF 4" IN DEPTH.
- SURFACE ROUGHENING SHALL NOT BE USED ON EXTREMELY SANDY OR ROCKY SOILS.

**MAINTENANCE NOTES:**

- FREQUENT OBSERVATIONS AND MAINTENANCE ARE NECESSARY TO MAINTAIN CONTROL MEASURES IN EFFECTIVE OPERATING CONDITION. INSPECTIONS AND CORRECTIVE MEASURES SHOULD BE DOCUMENTED THOROUGHLY.
- VEHICLES AND EQUIPMENT SHALL NOT BE DRIVEN OVER AREAS THAT HAVE BEEN SURFACE ROUGHENED.

**SURFACE ROUGHENING**

APPROVED: \_\_\_\_\_

ISSUED: 10/7/19    REVISED: 8/19/2020    DRAWING NO. 900-SR

REFERENCE DRAWINGS	NO.	DATE	DESCRIPTION	BY
X-Tile-GEC	###	###	###	###
X-Tile-GEC-haul route	###	###	###	###
<b>COMPUTER FILE MANAGEMENT</b>				
FILE NAME: S:\20.886.028 Trails PUDSP Major Amend\100 Dwg\104 Plan Sets\Construction Plans\GEC Plan\haul_route ECN01.dwg				
CTB FILE: ---				
PLOT DATE: July 27, 2023 11:14:35 AM				
THIS DRAWING IS CURRENT AS OF PLOT DATE AND MAY BE SUBJECT TO CHANGE.				

BENCHMARK	BENCHMARK
COLORADO SPRINGS UTILITIES (FIMS) MONUMENT F206	
A BERNTSEN TOP SECURITY MONUMENT SYSTEM WITH A 3.5-INCH DIAMETER ALUMINUM CAP IN A ROAD BOX, LOCATED ON THE NORTHWEST CORNER OF FONTAINE BOULEVARD AND POWERS BOULEVARD.	
ELEVATION - 5897.89' U.S. SURVEY FT	
<b>BASIS OF BEARING</b>	
BEARINGS ARE BASED ON THE NORTH LINE OF THE NORTHWEST QUARTER OF SECTION 9, TOWNSHIP 15 SOUTH, RANGE 65 WEST OF THE 6TH P.M. SAID LINE BEARS S89°51'23"E FROM THE NORTHWEST CORNER OF SAID SECTION 9 (2 1/2" AULM. CAP PLS 17664) TO THE N 1/2 CORNER OF SAID SECTION 9 (3 1/2" AULM. CAP PLS 10377)	

**Matrix**

PREPARED BY: \_\_\_\_\_

FOR AND ON BEHALF OF  
MATRIX DESIGN GROUP, INC.  
PROJECT No. 23.886.078

SEAL

**TRAILS AT ASPEN RIDGE - STOCKPILE**

CONSTRUCTION DRAWINGS  
GRADING AND EROSION CONTROL PLANS

**EROSION CONTROL DETAILS**

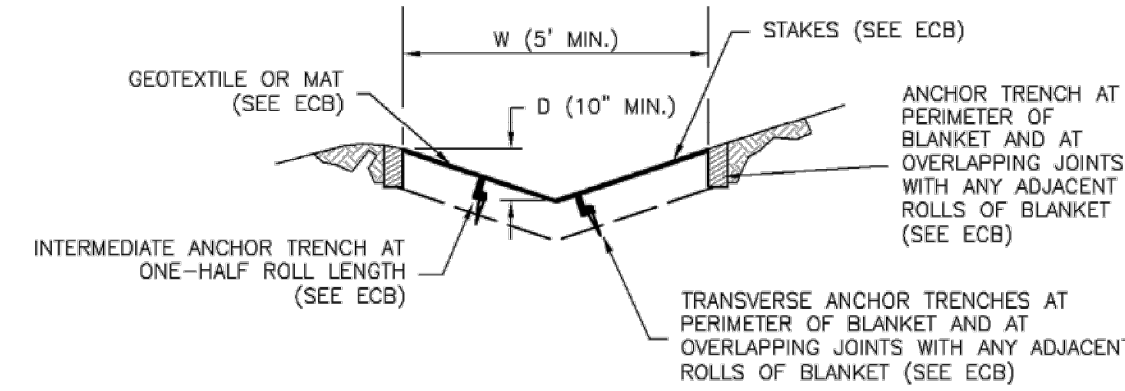
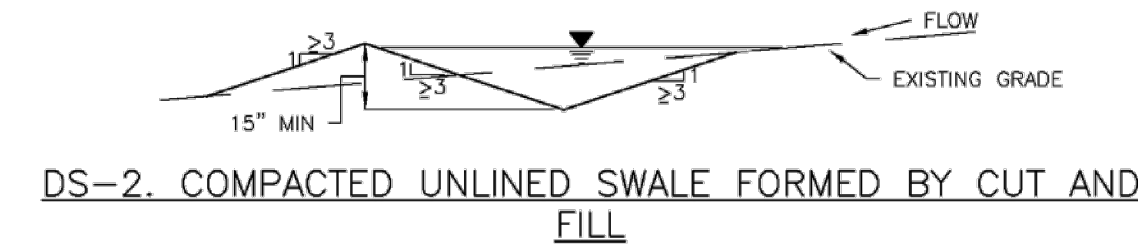
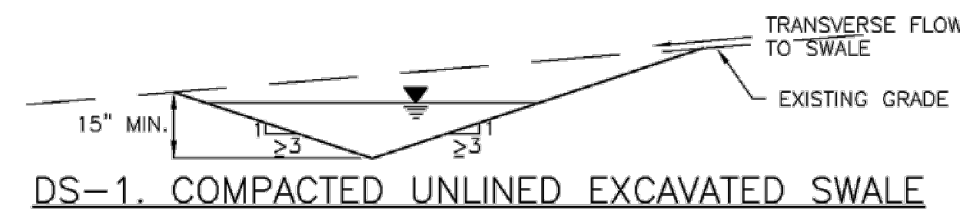
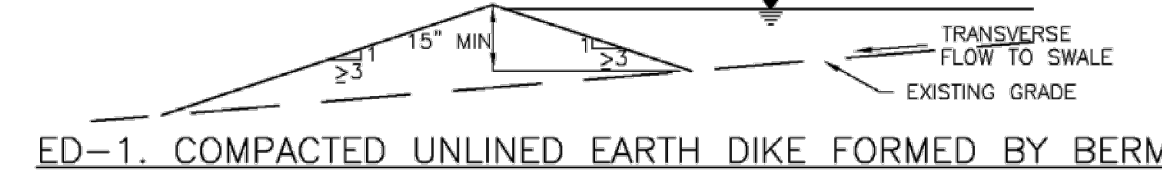
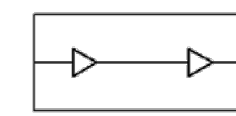
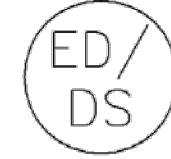
DESIGNED BY: NMS	SCALE:	DATE ISSUED: MAY 2023	DRAWING No. ECN01
DRAWN BY: KGI	HORIZ N/A		
CHECKED BY: NMS	VERT. N/A	SHEET 5 OF 8	

EPC'S EDARP FILE NUMBER: CDR2312

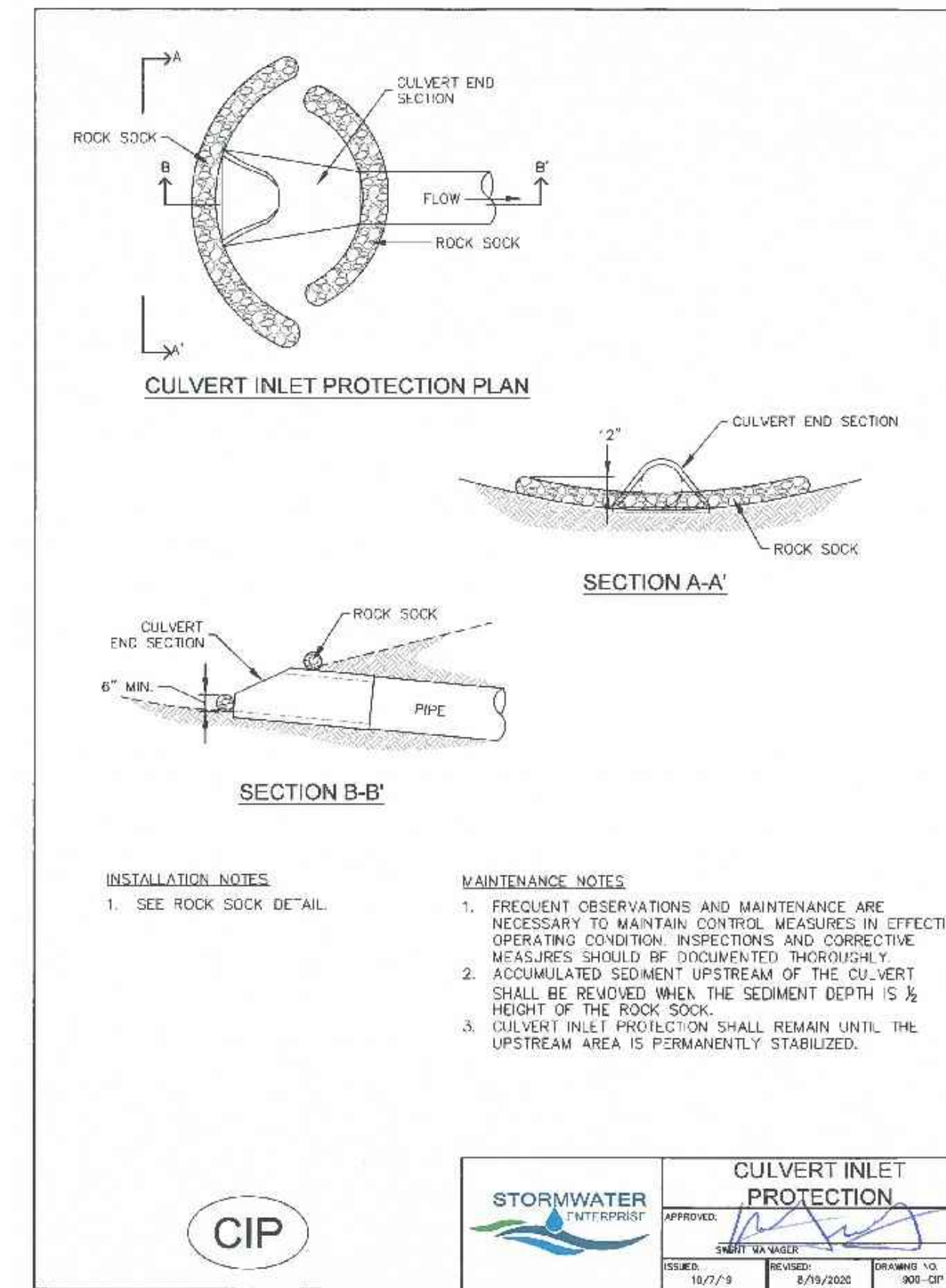


Know what's below.  
Call before you dig.

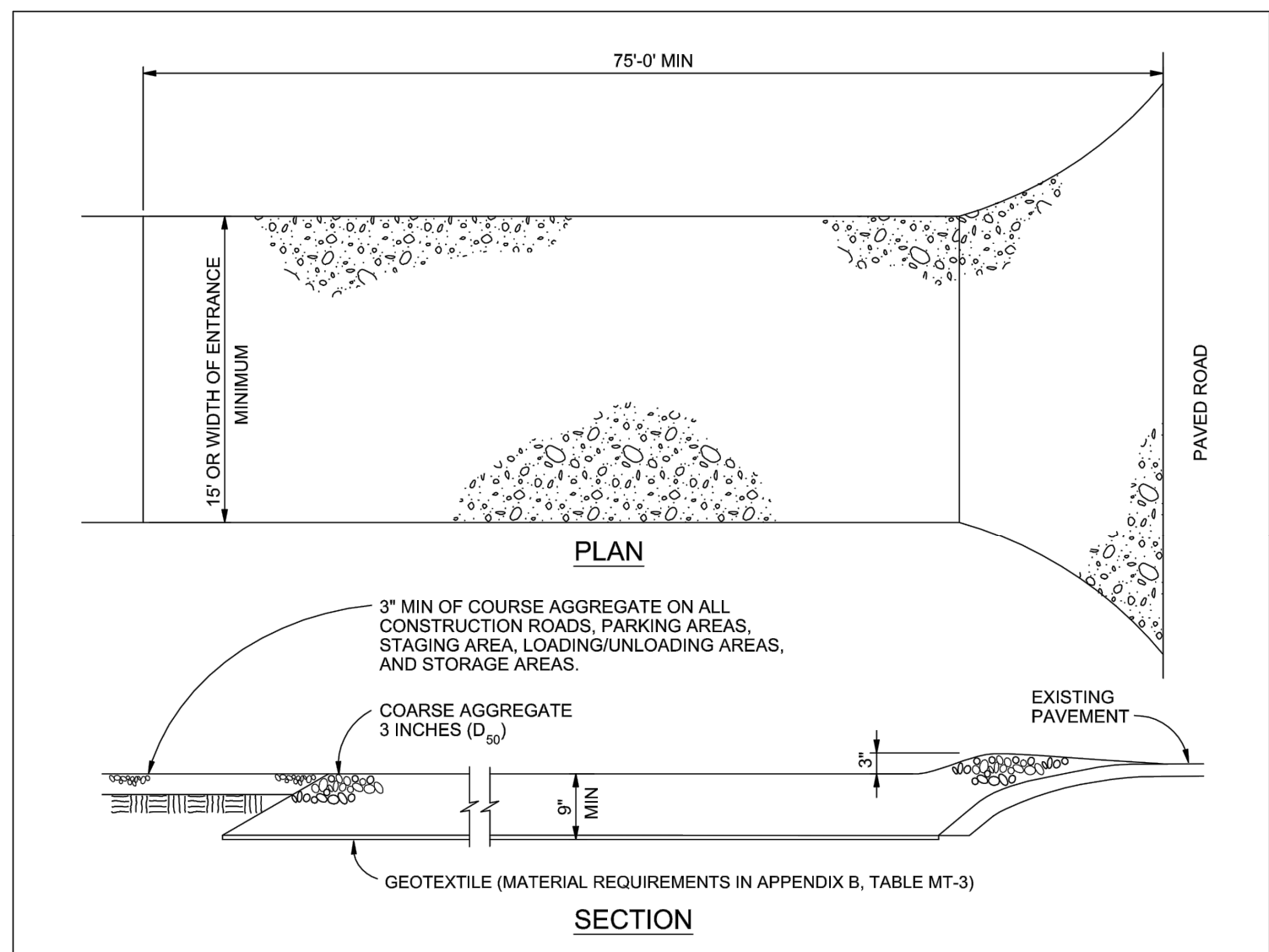
**Earth Dikes and Drainage Swales (ED/DS) EC-10**



November 2010 Urban Drainage and Flood Control District ED/DS-3  
Urban Storm Drainage Criteria Manual Volume 3



CULVERT INLET PROTECTION			
DESIGNED BY:	DATE:	REVISION:	DRAWING NO.
10/7/9	8/19/2006		900-CIP



**VEHICLE TRACKING NOTES**

**INSTALLATION REQUIREMENTS**

1. ALL ENTRANCES TO THE CONSTRUCTION SITE ARE TO BE STABILIZED PRIOR TO CONSTRUCTION BEGINNING.
2. CONSTRUCTION ENTRANCES ARE TO BE BUILT WITH AN APRON TO ALLOW FOR TURNING TRAFFIC, BUT SHOULD NOT BE BUILT OVER EXISTING PAVEMENT EXCEPT FOR A SLIGHT OVERLAP.
3. AREAS TO BE STABILIZED ARE TO BE PROPERLY GRADED AND COMPACTED PRIOR TO LAYING DOWN GEOTEXTILE AND STONE.
4. CONSTRUCTION ROADS, PARKING AREAS, LOADING/UNLOADING ZONES, STORAGE AREAS, AND STAGING AREAS ARE TO BE STABILIZED.
5. CONSTRUCTION ROADS ARE TO BE BUILT TO CONFORM TO SITE GRADES, BUT SHOULD NOT HAVE SIDE SLOPES OR ROAD GRADES THAT ARE EXCESSIVELY STEEP.

**MAINTENANCE REQUIREMENTS**

1. REGULAR INSPECTIONS ARE TO BE MADE OF ALL STABILIZED AREAS, ESPECIALLY AFTER STORM EVENTS.
2. STONES ARE TO BE REAPPLIED PERIODICALLY AND WHEN REPAIR IS NECESSARY.
3. SEDIMENT TRACKED ONTO PAVED ROADS IS TO BE REMOVED DAILY BY SHOVELING OR SWEEPING. SEDIMENT IS NOT TO BE WASHED DOWN STORM SEWER DRAINS.
4. STORM SEWER INLET PROTECTION IS TO BE IN PLACE, INSPECTED, AND CLEANED IF NECESSARY.
5. OTHER ASSOCIATED SEDIMENT CONTROL MEASURES ARE TO BE INSPECTED TO ENSURE GOOD WORKING CONDITION.

City of Colorado Springs Stormwater Quality  
Figure VT-2 Vehicle Tracking  
Application Examples

3-54

EPC'S EDARP FILE NUMBER: CDR2312

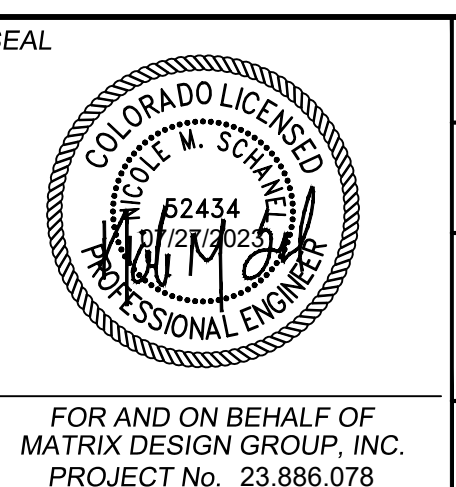
REFERENCE DRAWINGS	NO.	DATE	DESCRIPTION	BY
X-Title-GEC				
X-Title-GEC-haul route				
<b>COMPUTER FILE MANAGEMENT</b>				
FILE NAME: S:\20.886.028 Trails PUDSP Major Amend\100 Dwg\104 Plan Sets\Construction Plans\GEC Plan\haul_route ECN01.dwg				
CTB FILE: ---				
PLOT DATE: July 27, 2023 11:14:38 AM				
THIS DRAWING IS CURRENT AS OF PLOT DATE AND MAY BE SUBJECT TO CHANGE.				

SHEET KEY	NO.	DESCRIPTION	BY

**BENCHMARK**  
COLORADO SPRINGS UTILITIES (FIMS) MONUMENT F206  
A BERNTSEN TOP SECURITY MONUMENT SYSTEM WITH A 3.5-INCH DIAMETER ALUMINUM CAP IN A ROAD BOX, LOCATED ON THE NORTHWEST CORNER OF FONTAINE BOULEVARD AND POWERS BOULEVARD.  
ELEVATION - 5897.89' U.S. SURVEY FT

**BASIS OF BEARING**  
BEARINGS ARE BASED ON THE NORTH LINE OF THE NORTHWEST QUARTER OF SECTION 9, TOWNSHIP 15 SOUTH, RANGE 65 WEST OF THE 6TH P.M. SAID LINE BEARS S89°51'23"E FROM THE NORTHWEST CORNER OF SAID SECTION 9 (2 1/2" AULM. CAP PLS 17664) TO THE N 1/4 CORNER OF SAID SECTION 9 (3 1/2" AULM. CAP PLS 10377)

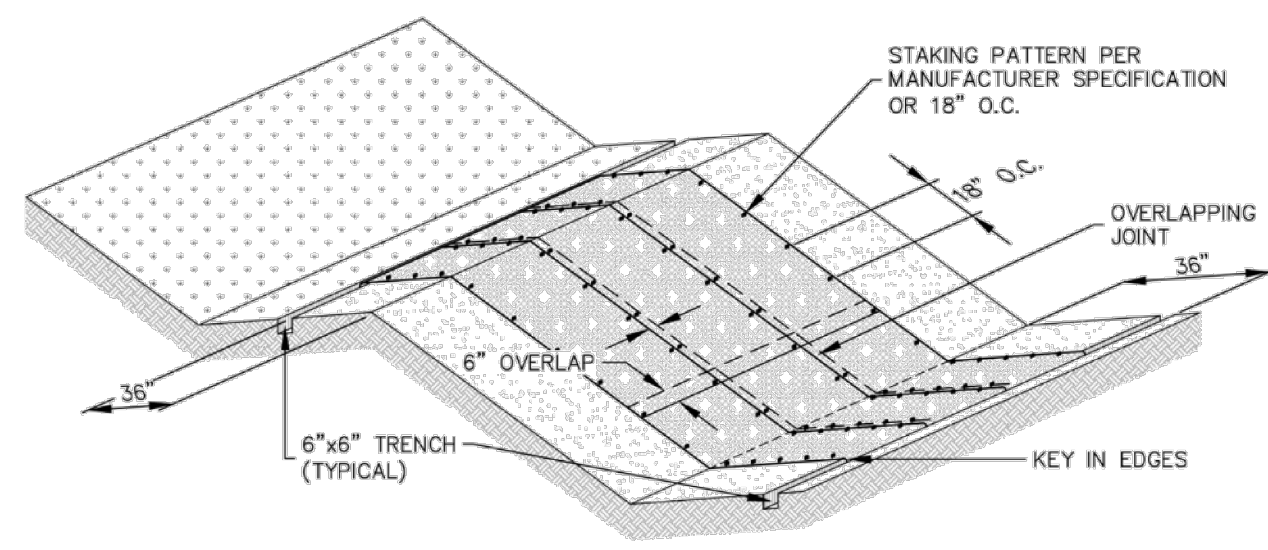
PREPARED BY:



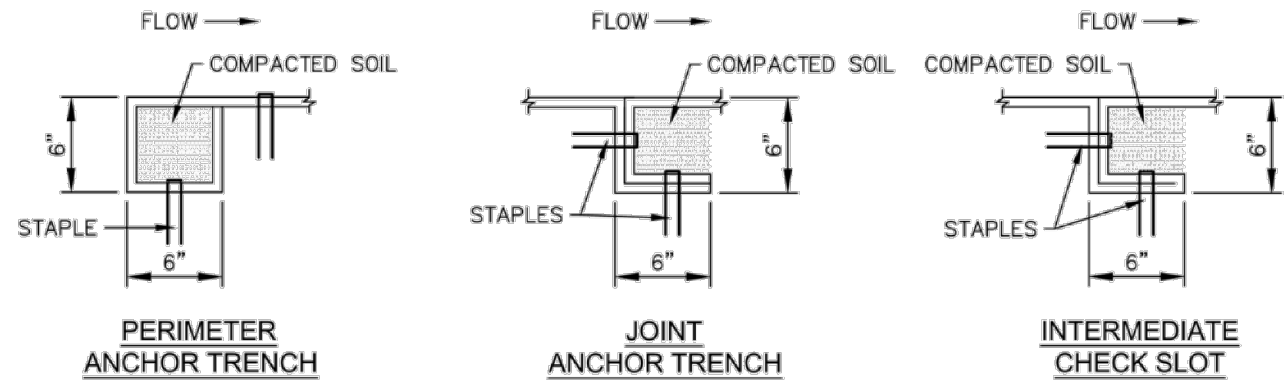
<b>TRAILS AT ASPEN RIDGE - STOCKPILE</b>			
CONSTRUCTION DRAWINGS GRADING AND EROSION CONTROL PLANS			
<b>EROSION CONTROL DETAILS</b>			
DESIGNED BY:	NMS	SCALE:	DATE ISSUED:
DRAWN BY:	KGI	HORIZ	MAY 2023
CHECKED BY:	NMS	VERT.	6 OF 8
			DRAWING No. <b>ECN02</b>



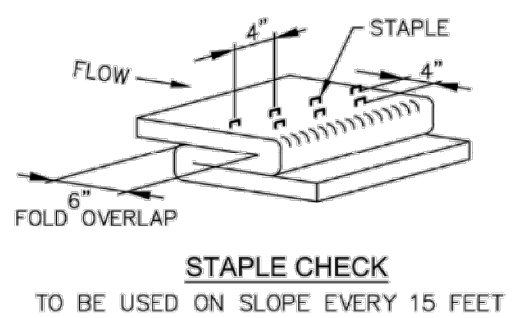
Know what's below.  
Call before you dig.



EROSION CONTROL BLANKET



OVERLAPPING JOINT



**EROSION CONTROL BLANKET**

APPROVED: *[Signature]*

ISSUED: 10/7/19 REVISED: 8/19/2020 DRAWING NO. 900-ECB-1

INSTALLATION NOTES

- 100% NATURAL AND BIODEGRADABLE MATERIALS ARE REQUIRED FOR EROSION CONTROL BLANKETS. TRM PRODUCTS MAY BE USED WHERE APPROPRIATE AS DESIGNATED BY THE ENGINEER.
- IN AREAS WHERE EROSION CONTROL BLANKETS ARE SHOWN ON THE PLANS, THE PERMITTEE SHALL PLACE TOPSOIL AND PERFORM FINAL GRADING, SURFACE PREPARATION, AND SEEDING AND MULCHING. SUBGRADE SHALL BE SMOOTH AND MOIST PRIOR TO EROSION CONTROL BLANKET INSTALLATION, AND THE EROSION CONTROL BLANKET SHALL BE IN FULL CONTACT WITH THE SUBGRADE. NO GAPS OR VOIDS SHALL EXIST UNDER THE BLANKET.
- PERIMETER ANCHOR TRENCH SHALL BE USED ALONG THE OUTSIDE PERIMETER OF ALL BLANKET AREAS.
- JOINT ANCHOR TRENCH SHALL BE USED TO JOIN ROLLS OF EROSION CONTROL BLANKETS TOGETHER (LONGITUDINALLY AND TRANSVERSELY) FOR ALL EROSION CONTROL BLANKETS.
- INTERMEDIATE CHECK SLOT OR STAPLE CHECK SHALL BE INSTALLED EVERY 15' DOWN SLOPES, IN DRAINAGEWAYS, INSTALL CHECK SLOTS EVERY 25' PERPENDICULAR TO FLOW DIRECTION.
- OVERLAPPING JOINT DETAIL SHALL BE USED TO JOIN ROLLS OF EROSION CONTROL BLANKETS TOGETHER FOR EROSION CONTROL BLANKETS ON SLOPES. MATERIAL SPECIFICATIONS OF EROSION CONTROL BLANKETS SHALL CONFORM TO TABLE ECB-1.
- ANY AREAS OF SEEDING AND MULCHING DISTURBED IN THE PROCESS OF INSTALLING EROSION CONTROL BLANKETS SHALL BE RESEEDED AND MULCHED.
- STRAW EROSION CONTROL BLANKETS SHALL NOT BE USED WITHIN STREAMS AND DRAINAGE CHANNELS.
- COMPACT ALL TRENCHES.

MAINTENANCE NOTES

- FREQUENT OBSERVATIONS AND MAINTENANCE ARE NECESSARY TO MAINTAIN CONTROL MEASURES IN EFFECTIVE OPERATING CONDITION. INSPECTIONS AND CORRECTIVE MEASURES SHOULD BE DOCUMENTED THOROUGHLY.
- EROSION CONTROL BLANKETS SHALL BE LEFT IN PLACE TO EVENTUALLY BIODEGRADE. TRM MUST BE REMOVED AT THE DISCRETION OF THE GEC INSPECTOR.
- ANY EROSION CONTROL BLANKET PULLED OUT, TORN, OR OTHERWISE DAMAGED SHALL BE REPAIRED OR REINSTALLED. ANY SUBGRADE AREAS BELOW GEOTEXTILE THAT HAVE ERODED TO CREATE A VOID UNDER THE BLANKET, OR THAT REMAIN DEVOID OF GRASS SHALL BE REPAIRED, RESEEDED AND MULCHED AND THE EROSION CONTROL BLANKET REINSTALLED.

TABLE ECB-1, EROSION CONTROL BLANKET MATERIAL SPECIFICATIONS

TYPE	COCONUT CONTENT	STRAW CONTENT	EXCELSIOR CONTENT	RECOMMENDED NETTING
STRAW	-	100%	-	DOUBLE/NATURAL
STRAW-COCONUT	30% MIN.	70% MAX.	-	DOUBLE/NATURAL
COCONUT	100%	-	-	DOUBLE/NATURAL
EXCELSIOR	-	-	100%	DOUBLE/NATURAL



**EROSION CONTROL BLANKET**

APPROVED: *[Signature]*

ISSUED: 10/7/19 REVISED: 8/19/2020 DRAWING NO. 900-ECB-2

SEEDING & MULCHING

ALL SOIL TESTING, SOILS AMENDMENT AND FERTILIZER DOCUMENTATION, AND SEED LOAD AND BAG TICKETS MUST BE ADDED TO THE CSWMP.

SOIL PREPARATION

- IN AREAS TO BE SEED, THE UPPER 6 INCHES OF THE SOIL MUST NOT BE HEAVILY COMPACTED, AND SHOULD BE IN FRIABLE CONDITION. LESS THAN 85% STANDARD PROCTOR DENSITY IS ACCEPTABLE. AREAS OF COMPACTION OR GENERAL CONSTRUCTION ACTIVITY MUST BE SCARIFIED TO A DEPTH OF 6 TO 12 INCHES PRIOR TO SPREADING TOPSOIL TO BREAK UP COMPACTED LAYERS AND PROVIDE A BLENDING ZONE BETWEEN DIFFERENT SOIL LAYERS.
- AREAS TO BE PLANTED SHALL HAVE AT LEAST 4 INCHES OF TOPSOIL SUITABLE TO SUPPORT PLANT GROWTH.
- THE CITY RECOMMENDS THAT EXISTING AND/OR IMPORTED TOPSOIL BE TESTED TO IDENTIFY SOIL DEFICIENCIES AND ANY SOIL AMENDMENTS NECESSARY TO ADDRESS THESE DEFICIENCIES. SOIL AMENDMENTS AND/OR FERTILIZERS SHOULD BE ADDED TO CORRECT TOPSOIL DEFICIENCIES BASED ON SOIL TESTING RESULTS.
- TOPSOIL SHALL BE PROTECTED DURING THE CONSTRUCTION PERIOD TO RETAIN ITS STRUCTURE AVOID COMPACTION, AND TO PREVENT EROSION AND CONTAMINATION. STRIPPED TOPSOIL MUST BE STORED IN AN AREA AWAY FROM MACHINERY AND CONSTRUCTION OPERATIONS, AND CARE MUST BE TAKEN TO PROTECT THE TOPSOIL AS A VALUABLE COMMODITY. TOPSOIL MUST NOT BE STRIPPED DURING UNDESIRABLE WORKING CONDITIONS (E.G. DURING WET WEATHER OR WHEN SOILS ARE SATURATED). TOPSOIL SHALL NOT BE STORED IN SWALES OR IN AREAS WITH POOR DRAINAGE.

SEEDING

- ALLOWABLE SEED MIXES ARE INCLUDED IN THE CITY OF COLORADO SPRINGS STORMWATER CONSTRUCTION MANUAL. ALTERNATIVE SEED MIXES ARE ACCEPTABLE IF INCLUDED IN AN APPROVED LANDSCAPING PLAN.
- SEED SHOULD BE DRILL-SEEDED WHENEVER POSSIBLE.
  - SEED DEPTH MUST BE 1/2 TO 3/4 INCHES WHEN DRILL-SEEDED IS USED.
- BROADCAST SEEDING OR HYDRO-SEEDED WITH TACKIFIER MAY BE SUBSTITUTED ON SLOPES STEEPER THAN 3:1 OR ON OTHER AREAS NOT PRACTICAL TO DRILL SEED.
  - SEEDING RATES MUST BE DOUBLED FOR BROADCAST SEEDING OR INCREASED BY 50% IF USING A BRILLIUM DRILL OR HYDRO-SEEDED.
  - BROADCAST SEEDING MUST BE LIGHTLY HAND-RAKED INTO THE SOIL.

MULCHING

- MULCHING SHOULD BE COMPLETED AS SOON AS PRACTICABLE AFTER SEEDING, HOWEVER PLANTED AREAS MUST BE MULCHED NO LATER THAN 14 DAYS AFTER PLANTING.
- MULCHING REQUIREMENTS INCLUDE:
  - HAY OR STRAW MULCH
    - ONLY CERTIFIED WEED-FREE AND CERTIFIED SEED-FREE MULCH MAY BE USED. MULCH MUST BE APPLIED AT 2 TONS/ACRE AND ADEQUATELY SECURED BY CRIMPING AND/OR TACKIFIER.
    - CRIMPING MUST NOT BE USED ON SLOPES GREATER THAN 3:1 AND MULCH FIBERS MUST BE TUCKED INTO THE SOIL TO A DEPTH OF 3 TO 4 INCHES.
    - TACKIFIER MUST BE USED IN PLACE OF CRIMPING ON SLOPES STEEPER THAN 3:1.
  - HYDRAULIC MULCHING
    - HYDRAULIC MULCHING IS AN OPTION ON STEEP SLOPES OR WHERE ACCESS IS LIMITED.
    - IF HYDRO-SEEDED IS USED, MULCHING MUST BE APPLIED AS A SEPARATE, SECOND OPERATION.
    - WOOD CELLULOSE FIBERS MIXED WITH WATER MUST BE APPLIED AT A RATE OF 2,000 TO 2,500 POUNDS/ACRE, AND TACKIFIER MUST BE APPLIED AT A RATE OF 100 POUNDS/ACRE.
  - EROSION CONTROL BLANKET
    - EROSION CONTROL BLANKET MAY BE USED IN PLACE OF TRADITIONAL MULCHING METHODS.



**SEEDING & MULCHING**

APPROVED: *[Signature]*

ISSUED: 10/7/19 REVISED: 8/19/2020 DRAWING NO. 900-SM

SEED MIX NOTES:

DEVELOPED BY THE EL PASO COUNTY CONSERVATION DISTRICT

SEEDING RATE:  
BROADCAST: 20-25 LBS/ACRE  
DRILLED: 15-20 LBS/ACRE

MIX CONTAINS:

SPECIES	VARIETY	LBS. LIVE SEED PER ACRE
NATIVE BIG BLUESTEM	KAW, BISON, CHAMP	1.08
NATIVE LITTLE BLUESTEM	SCHIZACHYRIUM SCOPARIUM	0.12
NATIVE GREEN NEEDLEGRASS	LODROM	0.48
NATIVE WESTERN WHEATGRASS	ARRIBA, BARTON	1.60
NATIVE SIDEOATS GRAMA	VAUGHN, BUTTE, EL RENO, NINER	0.46
NATIVE SWITCHGRASS	BLACKWELL, GREENVILLE	0.20
NATIVE PRAIRIE SANDREED	GOSHEN, PRONGHORN	0.32
NATIVE YELLOW INDIANGRASS	CHEYENNE, HOLT, LLANO	0.51

EPC'S EDARP FILE NUMBER: CDR2312

REFERENCE DRAWINGS	NO.	DATE	DESCRIPTION	BY
X-Title-GEC	###	###	###	###
X-Title-GEC-haul route	###	###	###	###
<b>COMPUTER FILE MANAGEMENT</b>				
FILE NAME: S:\20.886.028 Trails PUDSP Major Amend\100 Dwg\104 Plan Sets\Construction Plans\GEC Plan\haul_route ECN01.dwg				
CTB FILE: ---				
PLOT DATE: July 27, 2023 11:14:42 AM				
THIS DRAWING IS CURRENT AS OF PLOT DATE AND MAY BE SUBJECT TO CHANGE.				

SHEET KEY

BENCHMARK  
COLORADO SPRINGS UTILITIES (FIMS) MONUMENT F206  
A BERNTSEN TOP SECURITY MONUMENT SYSTEM WITH A 3.5-INCH DIAMETER ALUMINUM CAP IN A ROAD BOX, LOCATED ON THE NORTHWEST CORNER OF FONTAINE BOULEVARD AND POWERS BOULEVARD.  
ELEVATION - 5897.89' U.S. SURVEY FT

BASIS OF BEARING  
BEARINGS ARE BASED ON THE NORTH LINE OF THE NORTHWEST QUARTER OF SECTION 9, TOWNSHIP 15 SOUTH, RANGE 65 WEST OF THE 6TH P.M. SAID LINE BEARS S89°51'23"E FROM THE NORTHWEST CORNER OF SAID SECTION 9 (2 1/2" AULM. CAP PLS 17664) TO THE N 1/2 CORNER OF SAID SECTION 9 (3 1/2" AULM. CAP PLS 10377)

PREPARED BY:

**Matrix**

FOR AND ON BEHALF OF  
MATRIX DESIGN GROUP, INC.  
PROJECT No. 23.886.078

SEAL

DATE ISSUED: MAY 2023  
DRAWING No. ECN03

**TRAILS AT ASPEN RIDGE - STOCKPILE**

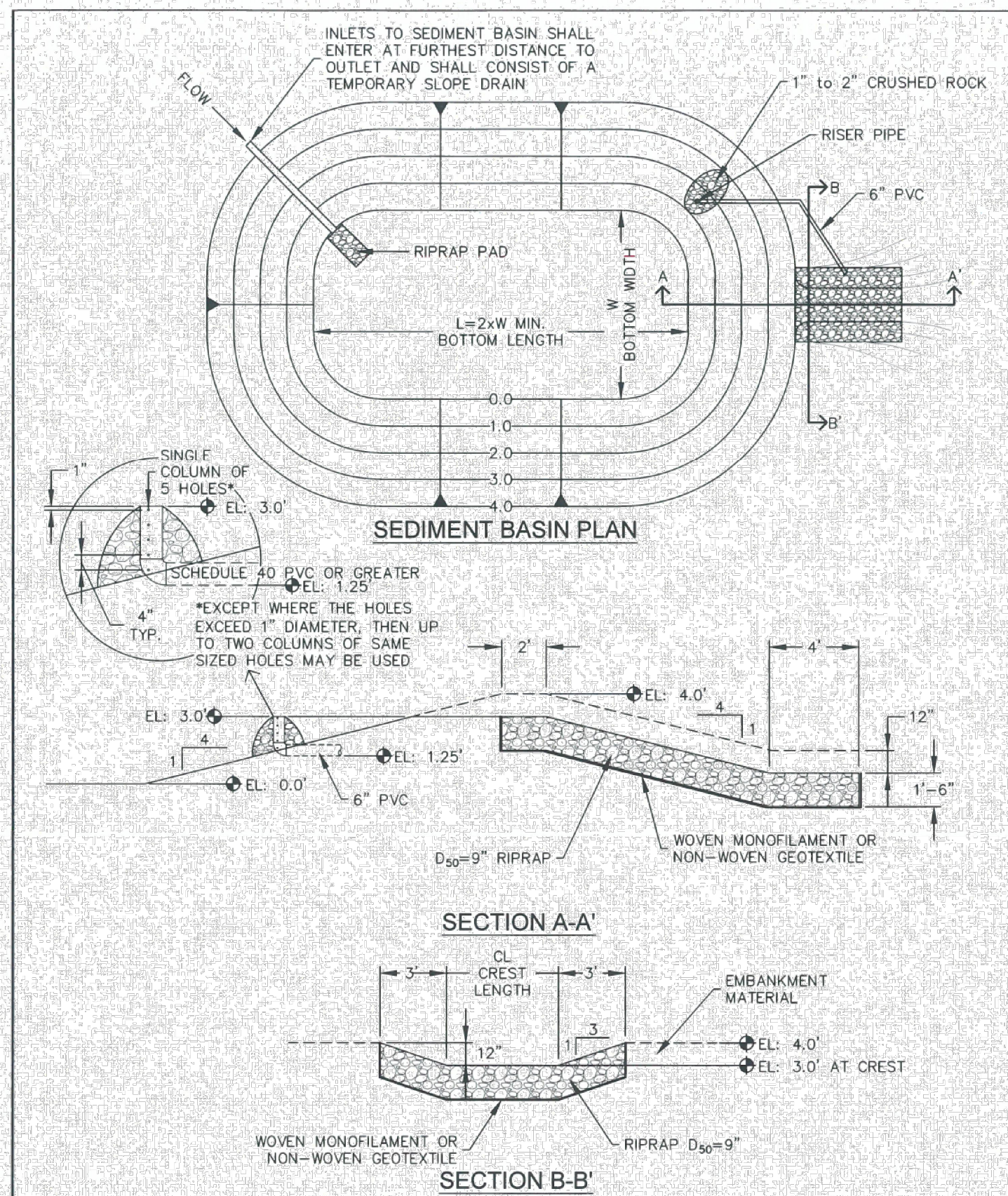
CONSTRUCTION DRAWINGS  
GRADING AND EROSION CONTROL PLANS

**EROSION CONTROL DETAILS**

DESIGNED BY: NMS	SCALE: HORIZ	DATE ISSUED: MAY 2023	DRAWING No. ECN03
DRAWN BY: NMS	HORIZ	7 OF 8	
CHECKED BY: NMS	VERT.		



Know what's below.  
Call before you dig.



TSB

STORMWATER ENTERPRISE		TEMPORARY SEDIMENT BASIN	
ISSUED: 10/7/19	REVISD: 8/19/2020	DRAWING NO: 900-TSB-1	

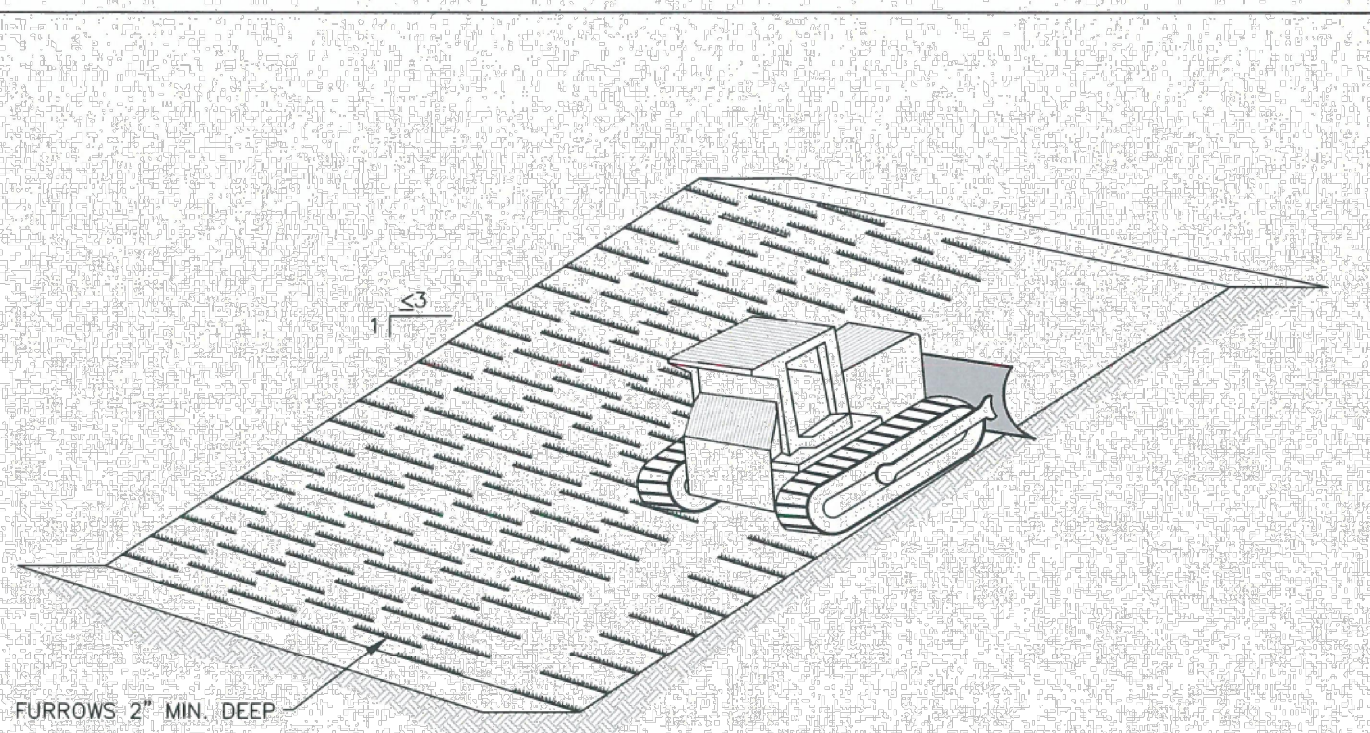
TABLE SB-1, SIZING INFORMATION FOR STANDARD SEDIMENT BASIN

UPSTREAM DRAINAGE AREA (ROUNDED TO NEAREST ACRE), (AC)	Basin Bottom Width (W), (FT)	Spillway Crest Length (CL), (FT)	Hole Diameter (HD), (IN)
1	12 1/2"	2	3/8"
2	21	3	1/2"
3	28	5	5/8"
4	33 1/2	6	3/4"
5	38 1/2	8	1"
6	43	9	1 1/8"
7	47 1/2	11	1 1/4"
8	51	12	1 1/2"
9	55	13	1 5/8"
10	58 1/2	15	1 3/4"
11	61	16	1 7/8"
12	64	18	2"
13	67 1/2	19	2 1/8"
14	70 1/2	21	2 1/4"
15	73 1/2	22	2 1/2"

- INSTALLATION NOTES**
- FOR STANDARD BASIN, BOTTOM DIMENSION MAY BE MODIFIED AS LONG AS BOTTOM AREA IS NOT REDUCED.
  - EMBANKMENT MATERIAL SHALL CONSIST OF SOIL FREE OF DEBRIS, ORGANIC MATERIAL, AND ROCKS OR CONCRETE GREATER THAN 3 INCHES, AND SHALL HAVE A MINIMUM OF 15 PERCENT BY WEIGHT PASSING THE No. 200 SIEVE.
  - EMBANKMENT MATERIAL SHALL BE COMPACTED TO AT LEAST 95 PERCENT OF MAXIMUM DENSITY IN ACCORDANCE WITH ASTM D-698.
  - PIPE SCHEDULE 40 OR GREATER SHALL BE USED.
  - THE DETAILS SHOWN ON THESE SHEETS PERTAIN TO STANDARD SEDIMENT BASIN(S) FOR DRAINAGE AREAS LESS THAN 15 ACRES. SEE CONSTRUCTION DRAWINGS FOR EMBANKMENT, STORAGE VOLUME, SPILLWAY, OUTLET, AND OUTLET PROTECTION DETAILS FOR ANY SEDIMENT BASIN(S) THAT HAVE BEEN INDIVIDUALLY DESIGNED FOR DRAINAGE AREAS LARGER THAN 15 ACRES. DESIGN CALCULATIONS MUST BE APPROVED PRIOR TO IMPLEMENTATION.
- MAINTENANCE NOTES**
- FREQUENT OBSERVATIONS AND MAINTENANCE ARE NECESSARY TO MAINTAIN CONTROL MEASURES IN EFFECTIVE OPERATING CONDITION. INSPECTIONS AND CORRECTIVE MEASURES SHOULD BE DOCUMENTED THOROUGHLY.
  - SEDIMENT ACCUMULATED IN BASIN SHALL BE REMOVED AS NEEDED TO MAINTAIN CONTROL MEASURE EFFECTIVENESS, TYPICALLY WHEN SEDIMENT DEPTH REACHES ONE FOOT (I.E. TWO FEET BELOW SPILLWAY CREST).
  - SEDIMENT BASINS ARE TO REMAIN IN PLACE UNTIL THE UPSTREAM DISTURBED AREA IS PERMANENTLY STABILIZED.
  - PERMANENTLY STABILIZE AREA AFTER SEDIMENT BASIN REMOVAL.

TSB

STORMWATER ENTERPRISE		TEMPORARY SEDIMENT BASIN	
ISSUED: 10/7/19	REVISD: 8/19/2020	DRAWING NO: 900-TSB-2	



SLOPE TRACKING

- INSTALLATION NOTES**
- SLOPE TRACKING MAY BE USED ON SLOPES 3:1 OR STEEPER.
  - TRACKING GROOVES SHALL BE PERPENDICULAR TO THE SLOPE.
  - SLOPE TRACKING SHALL NOT BE USED ON EXTREMELY SANDY OR ROCKY SOILS.
- MAINTENANCE NOTES**
- FREQUENT OBSERVATIONS AND MAINTENANCE ARE NECESSARY TO MAINTAIN CONTROL MEASURES IN EFFECTIVE OPERATING CONDITION. INSPECTIONS AND CORRECTIVE MEASURES SHOULD BE DOCUMENTED THOROUGHLY.
  - VEHICLES AND EQUIPMENT SHALL NOT BE DRIVEN OVER AREAS THAT HAVE BEEN SLOPE TRACKED.

ST

STORMWATER ENTERPRISE		SLOPE TRACKING	
ISSUED: 10/7/19	REVISD: 8/19/2020	DRAWING NO: 900-ST	

EPC'S EDARP FILE NUMBER: CDR2312

REFERENCE DRAWINGS	NO.	DATE	DESCRIPTION
###	###	###	
###	###	###	
###	###	###	
###	###	###	
###	###	###	
###	###	###	
###	###	###	
###	###	###	
###	###	###	
###	###	###	

COMPUTER FILE MANAGEMENT

FILE NAME: S:\20.886.028 Trails PUDSP Major Amend\100 Dwg\104 Plan Sets\Construction Plans\GEC Plan\haul\_route ECN01.dwg  
 CTB FILE: ---  
 PLOT DATE: July 27, 2023 11:14:47 AM  
 THIS DRAWING IS CURRENT AS OF PLOT DATE AND MAY BE SUBJECT TO CHANGE.

###	###	###	###
###	###	###	###
###	###	###	###
###	###	###	###
###	###	###	###
###	###	###	###
###	###	###	###
###	###	###	###
###	###	###	###
###	###	###	###
###	###	###	###

**BENCHMARK**  
 COLORADO SPRINGS UTILITIES (FIMS) MONUMENT F206  
 A BERNTSEN TOP SECURITY MONUMENT SYSTEM WITH A 3.5-INCH DIAMETER ALUMINUM CAP IN A ROAD BOX, LOCATED ON THE NORTHWEST CORNER OF FONTAINE BOULEVARD AND POWERS BOULEVARD.  
 ELEVATION - 5897.89' U.S. SURVEY FT

**BASIS OF BEARING**  
 BEARINGS ARE BASED ON THE NORTH LINE OF THE NORTHWEST QUARTER OF SECTION 9, TOWNSHIP 15 SOUTH, RANGE 65 WEST OF THE 6TH P.M. SAID LINE BEARS S89°51'23"E FROM THE NORTHWEST CORNER OF SAID SECTION 9 (2 1/2" AULM. CAP PLS 17664) TO THE N 1/4 CORNER OF SAID SECTION 9 (3 1/2" AULM. CAP PLS 10377)

PREPARED BY:

SEAL

FOR AND ON BEHALF OF  
 MATRIX DESIGN GROUP, INC.  
 PROJECT No. 23.886.078

TRAILS AT ASPEN RIDGE - STOCKPILE

CONSTRUCTION DRAWINGS  
 GRADING AND EROSION CONTROL PLANS

EROSION CONTROL DETAILS

DESIGNED BY: NMS	SCALE:	DATE ISSUED: MAY 2023	DRAWING No. ECN04
DRAWN BY: KGI	HORIZ N/A	SHEET 8 OF 8	
CHECKED BY: NMS	VERT. N/A		