



Know what's below.
Call before you dig.

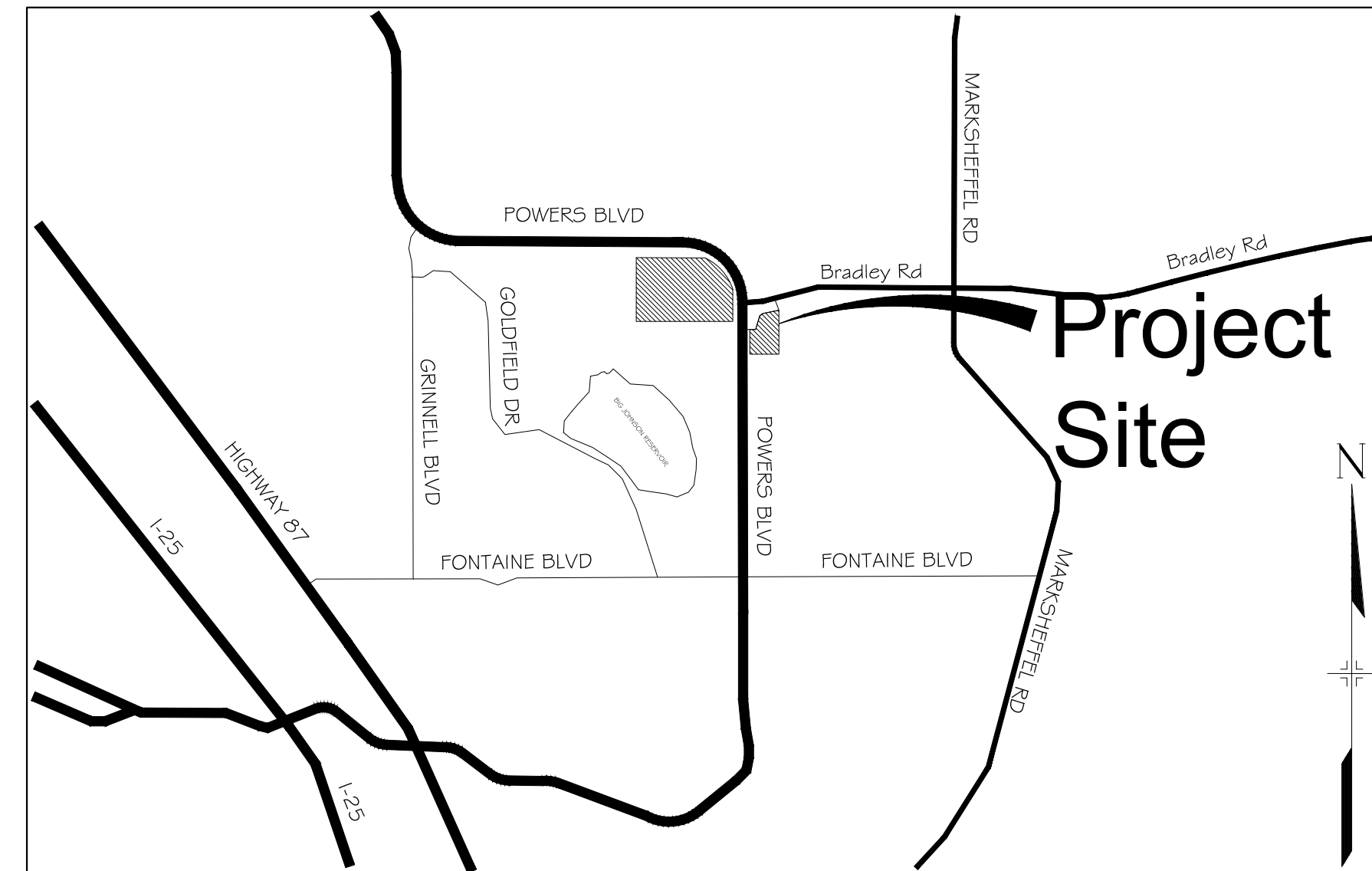
INDEX OF SHEETS	SHEET No.
TS01	TITLE SHEET 1
GN01	GENERAL NOTES 2
GEC01	GRADING & EROSION CONTROL PLAN 3
HR01	HAULING ROUTE PLAN 4
ECN01-ECN03	EROSION CONTROL DETAILS 5-8

TRAILS AT ASPEN RIDGE - STOCKPILE

COLORADO SPRINGS, COLORADO

GRADING & EROSION CONTROL PLANS

MAY 2023



VICINITY MAP

N.T.S.

OWNER/DEVELOPER	COLA, LLC 555 MIDDLE CREEK PARKWAY, SUITE 380 COLORADO SPRINGS, CO 80921 (719) 382-9433
CIVIL ENGINEER	MATRIX DESIGN GROUP 2435 RESEARCH PARKWAY, SUITE 300 COLORADO SPRINGS, CO 80920 NICOLE SCHANEL, (719) 659 6141
WATER & SANITARY SEWER	WIDEFIELD WATER AND SANITATION DISTRICT 8495 FONTAINE BOULEVARD COLORADO SPRINGS, CO 80925 ROBERT BANNISTER, (719) 390-7111
ELECTRIC	MOUNTAINVIEW ELECTRIC ASSOCIATION (719) 495-2283
GAS	COLORADO SPRINGS UTILITIES 1521 HANCOCK EXPRESSWAY COLORADO SPRINGS, CO MARY HOAGLUND (719) 668-4083
STREET	EL PASO COUNTY PUBLIC SERVICES DEPARTMENT (719) 520-6460
DRAINAGE	EL PASO COUNTY PUBLIC SERVICES DEPARTMENT (719) 520-6460
FIRE DEPARTMENT	SECURITY FIRE DEPARTMENT 400 SECURITY BOULEVARD SECURITY, CO 80911 (719) 392-7121

OWNER'S STATEMENT:

I, THE OWNER/DEVELOPER HAVE READ AND COMPLY WITH THE REQUIREMENTS OF THE GRADING AND EROSION CONTROL PLAN.

TIM BUSCHAR DATE
DIRECTOR OF LAND ACQUISITION AND DEVELOPMENT

CYGNET LAND, LLC DATE

WATERVIEW COMMERCIAL INVESTORS, LLC DATE

ENGINEER'S STATEMENT:

THIS GRADING AND EROSION CONTROL PLAN WAS PREPARED UNDER MY DIRECTION AND SUPERVISION AND IS CORRECT TO THE BEST OF MY KNOWLEDGE AND BELIEF. SAID PLAN HAS BEEN PREPARED ACCORDING TO THE CRITERIA ESTABLISHED BY THE COUNTY FOR GRADING AND EROSION CONTROL PLANS. I ACCEPT RESPONSIBILITY FOR ANY LIABILITY CAUSED BY ANY NEGLIGENT ACTS, ERRORS OR OMISSIONS ON MY PART IN PREPARING THIS REPORT.

NICOLE SCHANEL, PE #52434 DATE

EL PASO COUNTY:

COUNTY PLAN REVIEW IS PROVIDED ONLY FOR GENERAL CONFORMANCE WITH COUNTY DESIGN CRITERIA. THE COUNTY IS NOT RESPONSIBLE FOR THE ACCURACY AND ADEQUACY OF THE DESIGN, DIMENSIONS, AND/ OR ELEVATIONS WHICH SHALL BE CONFIRMED AT THE JOB SITE. THE COUNTY THROUGH THE APPROVAL OF THIS DOCUMENT ASSUMES NO RESPONSIBILITY FOR COMPLETENESS AND/ OR ACCURACY OF THIS DOCUMENT.

FILED IN ACCORDANCE WITH THE REQUIREMENTS OF THE EL PASO COUNTY LAND DEVELOPMENT CODE, DRAINAGE CRITERIA MANUAL, VOLUMES 1 AND 2, AND ENGINEERING CRITERIA MANUAL AS AMENDED.

IN ACCORDANCE WITH ECM SECTION 1.12, THESE CONSTRUCTION DOCUMENTS WILL BE VALID FOR CONSTRUCTION FOR A PERIOD OF 2 YEARS FROM THE DATE SIGNED BY THE EL PASO COUNTY ENGINEER. IF CONSTRUCTION HAS NOT STARTED WITHIN THOSE 2 YEARS, THE PLANS WILL NEED TO BE RESUBMITTED FOR APPROVAL, INCLUDING PAYMENT OF REVIEW FEES AT THE PLANNING AND COMMUNITY DEVELOPMENT DIRECTORS DISCRETION.

JOSHUA PALMER, P.E. DATE
COUNTY ENGINEER / ECM ADMINISTRATOR

EPC'S EDARP FILE NUMBER: CDR2312

REFERENCE DRAWINGS	No.	DATE	DESCRIPTION	BY
X-Title-GEC	###	###		###
X-886-PR SITE-F2	###	###		###
10415-Ex-Base	###	###		###
X-886-PR SITE_F1	###	###		###
X-886-PR SITE - F3	###	###		###
X-886-EX-BASE	###	###		###
X-886-EX SURVEY	###	###		###
886-PR Legacy Drive-Roundabout				
886-PR Legacy Drive				
haul_route GEC				
X-Title-GEC-haul route				

SHEET KEY	DESCRIPTION
N	BENCHMARK

BENCHMARK
COLORADO SPRINGS UTILITIES (FIMS) MONUMENT F206
A BERNTSEN TOP SECURITY MONUMENT SYSTEM WITH A 3.5-INCH DIAMETER ALUMINUM CAP IN A ROAD BOX, LOCATED ON THE NORTHWEST CORNER OF FONTAINE BOULEVARD AND POWERS BOULEVARD.
ELEVATION - 5897.89' U.S. SURVEY FT

BASIS OF BEARING
BEARINGS ARE BASED ON THE NORTH LINE OF THE NORTHWEST QUARTER OF SECTION 9, TOWNSHIP 15 SOUTH, RANGE 65 WEST OF THE 6TH P.M. SAID LINE BEARS S89°51'23"E FROM THE NORTHWEST CORNER OF SAID SECTION 9 (2 1/2" AULM. CAP PLS 17664) TO THE N 1/4 CORNER OF SAID SECTION 9 (3 1/2" AULM. CAP PLS 10377)

PREPARED BY:

SEAL
PRELIMINARY
THIS DRAWING HAS NOT BEEN APPROVED BY GOVERNING AGENCIES AND IS SUBJECT TO CHANGE

FOR AND ON BEHALF OF
MATRIX DESIGN GROUP, INC.
PROJECT No. 23.886.078

TRAILS AT ASPEN RIDGE - STOCKPILE			
CONSTRUCTION DRAWINGS GRADING AND EROSION CONTROL PLANS			
TITLE SHEET			
DESIGNED BY:	NMS	SCALE	DATE ISSUED: MAY 2023
DRAWN BY:	KGJ	HORIZ N/A	DRAWING No. 1 OF 8
CHECKED BY:	RA	VERT. N/A	SHEET 1 OF 8
			DRAWING No. TS01



Know what's below.
Call before you dig.

GENERAL CONSTRUCTION NOTES:

- STORMWATER DISCHARGES FROM CONSTRUCTION SITES SHALL NOT CAUSE OR THREATEN TO CAUSE POLLUTION, CONTAMINATION, OR DEGRADATION OF STATE WATERS. ALL WORK AND EARTH DISTURBANCE SHALL BE DONE IN A MANNER THAT MINIMIZES POLLUTION OF ANY ON-SITE OR OFF-SITE WATERS, INCLUDING WETLANDS.
- NOTWITHSTANDING ANYTHING DEPICTED IN THESE PLANS IN WORDS OR GRAPHIC REPRESENTATION, ALL DESIGN AND CONSTRUCTION RELATED TO ROADS, STORM DRAINAGE AND EROSION CONTROL SHALL CONFORM TO THE STANDARDS AND REQUIREMENTS OF THE MOST RECENT VERSION OF THE RELEVANT ADOPTED EL PASO COUNTY STANDARDS, INCLUDING THE LAND DEVELOPMENT CODE, THE ENGINEERING CRITERIA MANUAL, THE DRAINAGE CRITERIA MANUAL, AND THE DRAINAGE CRITERIA MANUAL VOLUME 2. ANY DEVIATIONS FROM REGULATIONS AND STANDARDS MUST BE REQUESTED, AND APPROVED, IN WRITING.
- A SEPARATE STORMWATER MANAGEMENT PLAN (SMWP) FOR THIS PROJECT SHALL BE COMPLETED AND AN EROSION AND STORMWATER QUALITY CONTROL PERMIT (ESQCP) ISSUED PRIOR TO COMMENCING CONSTRUCTION. DURING CONSTRUCTION THE SWMP IS THE RESPONSIBILITY OF THE DESIGNATED QUALIFIED STORMWATER MANAGER OR CERTIFIED EROSION CONTROL INSPECTOR. THE SWMP SHALL BE LOCATED ON SITE AT ALL TIMES DURING CONSTRUCTION AND SHALL BE KEPT UP TO DATE WITH WORK PROGRESS AND CHANGES IN THE FIELD.
- ONCE THE ESQCP IS APPROVED AND A "NOTICE TO PROCEED" HAS BEEN ISSUED, THE CONTRACTOR MAY INSTALL THE INITIAL STAGE EROSION AND SEDIMENT CONTROL MEASURES AS INDICATED ON THE APPROVED GEC. A PRECONSTRUCTION MEETING BETWEEN THE CONTRACTOR, ENGINEER, AND EL PASO COUNTY WILL BE HELD PRIOR TO ANY CONSTRUCTION. IT IS THE RESPONSIBILITY OF THE APPLICANT TO COORDINATE THE MEETING TIME AND PLACE WITH COUNTY STAFF.
- CONTROL MEASURES MUST BE INSTALLED PRIOR TO COMMENCEMENT OF ACTIVITIES THAT COULD CONTRIBUTE POLLUTANTS TO STORMWATER. TEMPORARY SEDIMENT AND EROSION CONTROL MEASURES FOR ALL SLOPES, CHANNELS, DITCHES, AND DISTURBED LAND AREAS SHALL BE INSTALLED IMMEDIATELY UPON COMPLETION OF THE DISTURBANCE.
- ALL TEMPORARY SEDIMENT AND EROSION CONTROL MEASURES SHALL BE MAINTAINED AND REMAIN IN EFFECTIVE OPERATING CONDITION UNTIL PERMANENT SOIL EROSION CONTROL MEASURES ARE IMPLEMENTED AND FINAL STABILIZATION IS ESTABLISHED. ALL PERSONS ENGAGED IN LAND DISTURBANCE ACTIVITIES SHALL ASSESS THE ADEQUACY OF CONTROL MEASURES AT THE SITE AND IDENTIFY IF CHANGES TO THOSE CONTROL MEASURES ARE NEEDED TO ENSURE THE CONTINUED EFFECTIVE PERFORMANCE OF THE CONTROL MEASURES. ALL CHANGES TO TEMPORARY SEDIMENT AND EROSION CONTROL MEASURES MUST BE INCORPORATED INTO THE STORMWATER MANAGEMENT PLAN PRIOR TO IMPLEMENTATION.
- TEMPORARY STABILIZATION SHALL BE IMPLEMENTED ON DISTURBED AREAS AND STOCKPILES WHERE GROUND DISTURBING CONSTRUCTION ACTIVITY HAS PERMANENTLY CEASED OR TEMPORARILY CEASED FOR LONGER THAN 14 DAYS. AN AREA THAT IS GOING TO REMAIN IN AN INTERIM STATE FOR MORE THAN 60 DAYS SHALL ALSO BE STABILIZED.
- FINAL STABILIZATION MUST BE IMPLEMENTED AT ALL APPLICABLE CONSTRUCTION SITES. FINAL STABILIZATION IS ACHIEVED WHEN ALL GROUND DISTURBING ACTIVITIES ARE COMPLETE AND ALL DISTURBED AREAS EITHER HAVE A UNIFORM VEGETATIVE COVER WITH INDIVIDUAL PLAN DENSITY OF 70 PERCENT OF PRE-DISTURBANCE LEVELS ESTABLISHED OR EQUIVALENT PERMANENT ALTERNATIVE STABILIZATION METHOD IS IMPLEMENTED. ALL TEMPORARY SEDIMENT AND EROSION CONTROL MEASURES SHALL BE REMOVED UPON FINAL STABILIZATION AND BEFORE PERMIT CLOSURE.
- ALL PERMANENT STORMWATER MANAGEMENT FACILITIES SHALL BE INSTALLED AS DEFINED IN THE APPROVED PLANS. ANY PROPOSED CHANGES THAT EFFECT THE HYDROLOGY OR HYDRAULICS OF A PERMANENT STORMWATER MANAGEMENT STRUCTURES MUST BE APPROVED BY THE ECM ADMINISTRATOR PRIOR TO IMPLEMENTATION.
- ANY EARTH DISTURBANCE SHALL BE CONDUCTED IN SUCH A MANNER SO AS TO EFFECTIVELY MINIMIZE ACCELERATED SOIL EROSION AND RESULTING SEDIMENTATION. ALL DISTURBANCES SHALL BE DESIGNED, CONSTRUCTED, AND COMPLETED SO THAT THE EXPOSED AREA OF ANY DISTURBED LAND SHALL BE LIMITED TO THE SHORTEST PRACTICAL PERIOD OF TIME. PRE-EXISTING VEGETATION SHALL BE PROTECTED AND MAINTAINED WITHIN 50 HORIZONTAL FEET OF A WATERS OF THE STATE, UNLESS INFEASIBLE AND SPECIFICALLY REQUESTED AND APPROVED.

- COMPACTION OF SOIL MUST BE PREVENTED IN AREAS DESIGNATED FOR INFILTRATION CONTROL MEASURES OR WHERE FINAL STABILIZATION WILL BE ACHIEVED BY VEGETATIVE COVER. AREAS DESIGNATED FOR INFILTRATION CONTROL SHALL ALSO BE PROTECTED FROM SEDIMENTATION DURING CONSTRUCTION UNTIL FINAL STABILIZATION IS ACHIEVED.
- ANY TEMPORARY OR PERMANENT FACILITY DESIGNED AND CONSTRUCTED FOR THE CONVEYANCE OF STORMWATER AROUND, THROUGH, OR FROM THE EARTH DISTURBANCE AREA SHALL BE A STABILIZED CONVEYANCE DESIGNED TO MINIMIZE EROSION AND THE DISCHARGE OF SEDIMENT OFF SITE.
- CONCRETE WASH WATER SHALL BE CONTAINED AND DISPOSED OF IN ACCORDANCE WITH THE SWMP. NO WASH WATER SHALL BE DISCHARGED TO OR ALLOWED TO RUNOFF TO STATE WATERS, INCLUDING ANY SURFACE OR SUBSURFACE STORM DRAINAGE SYSTEM OR FACILITIES. CONCRETE WASHOUT SHALL NOT BE LOCATED IN AN AREA WHERE SHALLOW GROUNDWATER MAY BE PRESENT, OR WITHIN 50 FEET OF A SURFACE WATER BODY.
- DURING DEWATERING OPERATIONS OF UNCONTAMINATED GROUND WATER MAY BE DISCHARGED ON SITE, BUT SHALL NOT LEAVE THE SITE IN THE FORM OF SURFACE RUNOFF UNLESS AN APPROVED STATE DEWATERING PERMIT IS IN PLACE.
- EROSION CONTROL BLANKETING OR OTHER PROTECTIVE COVERING SHALL BE USED ON SLOPES STEEPER THAN 3:1.
- CONTRACTOR SHALL BE RESPONSIBLE FOR THE REMOVAL OF ALL WASTES FROM THE CONSTRUCTION SITE FOR DISPOSAL IN ACCORDANCE WITH LOCAL AND STATE REGULATORY REQUIREMENTS. NO CONSTRUCTION DEBRIS, TREE SLASH, BUILDING MATERIAL WASTES OR UNUSED BUILDING MATERIALS SHALL BE BURIED, DUMPED, OR DISCHARGED AT THE SITE.
- WASTE MATERIALS SHALL NOT BE TEMPORARILY PLACED OR STORED IN THE STREET, ALLEY, OR OTHER PUBLIC WAY, UNLESS IN ACCORDANCE WITH AN APPROVED TRAFFIC CONTROL PLAN. CONTROL MEASURES MAY BE REQUIRED BY EL PASO COUNTY ENGINEERING IF DEEMED NECESSARY, BASED ON SPECIFIC CONDITIONS AND CIRCUMSTANCES.
- TRACKING OF SOILS AND CONSTRUCTION DEBRIS OFF-SITE SHALL BE MINIMIZED. MATERIALS TRACKED OFF-SITE SHALL BE CLEANED UP AND PROPERLY DISPOSED OF IMMEDIATELY.
- THE OWNER/DEVELOPER SHALL BE RESPONSIBLE FOR THE REMOVAL OF ALL CONSTRUCTION DEBRIS, DIRT, TRASH, ROCK, SEDIMENT, SOIL, AND SAND THAT MAY ACCUMULATE IN ROADS, STORM DRAINS AND OTHER DRAINAGE CONVEYANCE SYSTEMS AND STORMWATER APPURTENANCES AS A RESULT OF SITE DEVELOPMENT.
- THE QUANTITY OF MATERIALS STORED ON THE PROJECT SITE SHALL BE LIMITED, AS MUCH AS PRACTICAL, TO THAT QUANTITY REQUIRED TO PERFORM THE WORK IN AN ORDERLY SEQUENCE. ALL MATERIALS STORED ON-SITE SHALL BE STORED IN A NEAT, ORDERLY MANNER, IN THEIR ORIGINAL CONTAINERS, WITH ORIGINAL MANUFACTURER'S LABELS.
- NO CHEMICAL(S) HAVING THE POTENTIAL TO BE RELEASED IN STORMWATER ARE TO BE STORED OR USED ONSITE UNLESS PERMISSION FOR THE USE OF SUCH CHEMICAL(S) IS GRANTED IN WRITING BY THE ECM ADMINISTRATOR. IN GRANTING APPROVAL FOR THE USE OF SUCH CHEMICAL(S), SPECIAL CONDITIONS AND MONITORING MAY BE REQUIRED.
- BULK STORAGE OF ALLOWED PETROLEUM PRODUCTS OR OTHER ALLOWED LIQUID CHEMICALS IN EXCESS OF 55 GALLONS SHALL REQUIRE ADEQUATE SECONDARY CONTAINMENT PROTECTION TO CONTAIN ALL SPILLS ONSITE AND TO PREVENT ANY SPILLED MATERIALS FROM ENTERING STATE WATERS, ANY SURFACE OR SUBSURFACE STORM DRAINAGE SYSTEM OR OTHER FACILITIES.
- NO PERSON SHALL CAUSE THE IMPEDIMENT OF STORMWATER FLOW IN THE CURB AND GUTTER OR DITCH EXCEPT WITH APPROVED SEDIMENT CONTROL MEASURES.
- OWNER/DEVELOPER AND THEIR AGENTS SHALL COMPLY WITH THE "COLORADO WATER QUALITY CONTROL ACT" (TITLE 25, ARTICLE 8, CRS), AND THE "CLEAN WATER ACT" (33 USC 1344), IN ADDITION TO THE REQUIREMENTS OF THE LAND DEVELOPMENT CODE, DCM VOLUME II AND THE ECM APPENDIX I. ALL APPROPRIATE PERMITS MUST BE OBTAINED BY THE CONTRACTOR PRIOR TO CONSTRUCTION (1041, NPDES, FLOODPLAIN, 404, FUGITIVE DUST, ETC.). IN THE EVENT OF CONFLICTS BETWEEN THESE REQUIREMENTS AND OTHER LAWS, RULES, OR REGULATIONS OF OTHER FEDERAL, STATE, LOCAL, OR COUNTY AGENCIES, THE MOST RESTRICTIVE LAWS, RULES, OR

REGULATIONS SHALL APPLY.

- ALL CONSTRUCTION TRAFFIC MUST ENTER/EXIT THE SITE ONLY AT APPROVED CONSTRUCTION ACCESS POINTS.
- PRIOR TO CONSTRUCTION THE PERMITTEE SHALL VERIFY THE LOCATION OF EXISTING UTILITIES.
- A WATER SOURCE SHALL BE AVAILABLE ON SITE DURING EARTHWORK OPERATIONS AND SHALL BE UTILIZED AS REQUIRED TO MINIMIZE DUST FROM EARTHWORK EQUIPMENT AND WIND.
- THE SOILS REPORT FOR THIS SITE HAS BEEN PREPARED BY ENTECH ENGINEERING, INC., DATED AUGUST 9, 2019 AND SHALL BE CONSIDERED A PART OF THESE PLANS.
- AT LEAST TEN (10) DAYS PRIOR TO THE ANTICIPATED START OF CONSTRUCTION, FOR PROJECTS THAT WILL DISTURB ONE (1) ACRE OR MORE, THE OWNER OR OPERATOR OF CONSTRUCTION ACTIVITY SHALL SUBMIT A PERMIT APPLICATION FOR STORMWATER DISCHARGE TO THE COLORADO DEPARTMENT OF PUBLIC HEALTH AND ENVIRONMENT, WATER QUALITY DIVISION. THE APPLICATION CONTAINS CERTIFICATION OF COMPLETION OF A STORMWATER MANAGEMENT PLAN (SWMP), OF WHICH THIS GRADING AND EROSION CONTROL PLAN MAY BE A PART. FOR INFORMATION OR APPLICATION MATERIALS CONTACT:

COLORADO DEPARTMENT OF PUBLIC HEALTH AND ENVIRONMENT
WATER QUALITY CONTROL DIVISION
WQCD - PERMITS
4300 CHERRY CREEK DRIVE SOUTH
DENVER, CO 80246-1530
ATTN: PERMITS UNIT

NRCS SOIL SURVEY FOR EL PASO COUNTY

SOIL ID NO.	SOIL TYPE	HYDROLOGIC CLASSIFICATION
8	BLAKELAND LOAMY SAND (1%-9% SLOPES)	A
52	MANZANST CLAY LOAM (0%-3% SLOPES)	C
56	NELSON-TASSEL FINE SANDY LOAM (3%-18% SLOPES)	D
108	WILEY SILT LOAM (3%-9% SLOPES)	B
86	STONEHAM SANDY LOAM (3%-8% SLOPES)	B

TIMING

ANTICIPATED STARTING AND COMPLETION TIME PERIOD OF SITE GRADING:
JUNE 2023 THRU OCTOBER 2023

EXPECTED DATE ON WHICH THE FINAL STABILIZATION WILL BE COMPLETED:
AUGUST 2024

AREAS

TOTAL DISTURBED AREA: 28.5 ACRES

RECEIVING WATERS

NAME OF RECEIVING WATERS
BIG JOHNSON RESERVOIR

ENGINEER'S NOTES:

THE EXISTING VEGETATION CONSISTS OF NATIVE GRASSES AND SCRUB OAK. BASED ON SITE VISITS AND A REVIEW OF AERIAL PHOTOGRAPHY, THE VEGETATIVE COVER AT STOCK PILE SITE IS APPROXIMATELY 100%.

NPDES NOTES:

- THE CONTRACTOR SHALL REMOVE ALL SEDIMENT, MUD, AND CONSTRUCTION DEBRIS THAT MAY ACCUMULATE IN THE FLOWLINES AND PUBLIC RIGHTS OF WAYS AS A RESULT OF THIS CONSTRUCTION PROJECT. SAID REMOVAL SHALL BE CONDUCTED IN A TIMELY MANNER, OR AS DIRECTED BY THE ENGINEER.
- THIS CONSTRUCTION ACTIVITIES STORMWATER MANAGEMENT PLAN (SWMP) HAS BEEN SUBMITTED AS PART OF AN APPLICATION FOR AN EROSION AND SEDIMENT CONTROL PERMIT FILED WITH THE CITY OF COLORADO SPRINGS AND AS INCLUSION BY REFERENCE TO THE CDPE CONSTRUCTION ACTIVITY PERMIT. THE SWMP IS A LIVING DOCUMENT AND ADDITIONAL EROSION AND SEDIMENT CONTROL MEASURES MAY BE REQUIRED OF THE CONTRACTOR DUE TO UNFORESEEN EROSION PROBLEMS OR IF THE SUBMITTED PLAN DOES NOT FUNCTION AS INTENDED. THE REQUIREMENTS OF THIS PLAN SHALL BE THE OBLIGATION OF THE LAND OWNER AND/OR HIS SUCCESSORS OR HEIRS; UNTIL SUCH TIME AS THE PLAN IS PROPERLY COMPLETED, MODIFIED, OR VOIDED.
- THE CONTRACTOR SHALL BE HELD RESPONSIBLE FOR REMEDIATION OF ANY ADVERSE IMPACTS TO ADJACENT WATERWAYS, WETLANDS, ETC., RESULTING FROM WORK DONE AS PART OF THIS PROJECT.
- THE CONTRACTOR SHALL PREVENT SEDIMENT, DEBRIS AND ALL OTHER POLLUTANTS FROM ENTERING THE STORM SEWER SYSTEM DURING ALL DEMOLITION, EXCAVATION, TRENCHING, BORING, GRADING OR OTHER CONSTRUCTION OPERATIONS THAT ARE PART OF THIS PROJECT.
- A LAYER OF SUITABLE MULCH SHALL BE APPLIED TO ALL DISTURBED PORTIONS OF THE SITE WITHIN 21 DAYS OF THE COMPLETION OF GRADING. SAID MULCH SHALL BE APPLIED AT A RATE OF 2 TONS PER ACRE AND SHALL BE TACKED OR FASTENED BY AN APPROVED METHOD SUITABLE FOR THE TYPE OF MULCH USED. ROUGH-CUT STREETS SHALL BE MULCHED UNLESS A LAYER OF AGGREGATE ROAD BASE OR ASPHALT PAVING IS TO BE APPLIED TO SAID ROUGH-CUT STREETS WITHIN THE 21 DAY PERIOD AFTER COMPLETION OF OVERLOT GRADING. AN AREA THAT IS GOING TO REMAIN IN AN INTERIM STATE FOR MORE THEN SIXTY (60) DAYS SHALL ALSO BE SEEDED. ALL TEMPORARY SOIL EROSION CONTROL MEASURES AND BMP'S SHALL BE MAINTAINED UNTIL PERMANENT SOIL EROSION CONTROL MEASURES ARE IMPLEMENTED.
- THE CONTRACTOR SHALL LOCATE, INSTALL, AND MAINTAIN ALL EROSION CONTROL AND WATER QUALITY "BEST MANAGEMENT PRACTICES" AS INDICATED IN THE APPROVED CONSTRUCTION ACTIVITIES STORMWATER MANAGEMENT PLAN. BMP'S SHALL BE MAINTAINED AND KEPT IN GOOD REPAIR FOR THE DURATION OF THIS PROJECT.
- AT A MINIMUM, THE CONTRACTOR SHALL INSPECT, AND KEEP A LOG OF, ALL BMP'S WEEKLY AND AFTER SIGNIFICANT PRECIPITATION EVENTS. ALL NECESSARY MAINTENANCE AND REPAIR SHALL BE COMPLETED IN A TIMELY MANNER. ACCUMULATED SEDIMENT AND DEBRIS SHALL BE REMOVED FROM A BMP WHEN THE SEDIMENT LEVEL REACHES ONE-HALF THE HEIGHT OF THE BMP, OR, AT ANY TIME THAT SEDIMENT OR DEBRIS ADVERSELY IMPACTS THE FUNCTIONING OF THE BMP.
- THE CONTRACTOR SHALL PROPERLY COVER ALL LOADS OF CUT AND FILL MATERIAL IMPORTED TO OR EXPORTED FROM THIS SITE TO PREVENT LOSS OF THE MATERIAL DURING TRANSPORT WITHIN PUBLIC RIGHTS OF WAY.
- THE USE OF REBAR, STEEL STAKES, OR STEEL FENCE POSTS TO STAKE DOWN STRAW OR HAY BALES; OR TO SUPPORT SILT FENCING USED AS AN EROSION CONTROL MEASURE; IS PROHIBITED. THE USE OF OSHA APPROVED COLORED WARNING CAPS ON REBAR OR FENCE POSTS USED WITH EROSION CONTROL MEASURES IS NOT ACCEPTABLE.
- SOILS THAT WILL BE STOCKPILED FOR MORE THAN 30 DAYS SHALL BE MULCHED AND SEEDED WITH A TEMPORARY OR PERMANENT GRASS COVER WITHIN 21 DAYS OF STOCKPILE CONSTRUCTION. IF STOCKPILES ARE LOCATED WITHIN 100 FEET OF A DRAINAGEWAY, ADDITIONAL SEDIMENT CONTROLS SUCH AS TEMPORARY DIKES OR SILT FENCE SHALL BE REQUIRED.
- MODIFICATION OF AN ACTIVE EROSION AND SEDIMENT CONTROL PERMIT BY THE CONTRACTOR SHALL REQUIRE TIMELY NOTIFICATION OF AND APPROVAL BY THE CITY OF COLORADO SPRINGS. TERMINATION OF AN ACTIVE EROSION AND SEDIMENT CONTROL PERMIT UPON COMPLETION OF THE PROJECT REQUIRES NOTIFICATION OF AND APPROVAL BY THE CITY OF COLORADO SPRINGS.
- UNLESS CONFINED IN A PREDEFINED, BERMED CONTAINMENT AREA, THE CLEANING OF CONCRETE TRUCK DELIVERY CHUTES IS PROHIBITED AT THE JOB SITE. THE DISCHARGE OF WATER CONTAINING WASTE CEMENT TO THE STORM SEWER SYSTEM IS PROHIBITED.
- THE CONTRACTOR SHALL PROTECT ALL STORM SEWER FACILITIES ADJACENT TO ANY LOCATION WHERE PAVEMENT CUTTING OPERATIONS INVOLVING WHEEL CUTTING, SAW CUTTING OR ABRASIVE WATER JET CUTTING ARE TO TAKE PLACE. THE DISCHARGE OF ANY WATER CONTAMINATED BY WASTE PRODUCTS FROM CUTTING OPERATIONS TO THE STORM SEWER SYSTEM IS PROHIBITED. THE CONTRACTOR SHALL REMOVE AND PROPERLY DISPOSE OF ALL WASTE PRODUCTS GENERATED BY SAID CUTTING OPERATIONS ON A DAILY BASIS.
- LOCATION OF STAGING, STORAGE, EQUIPMENT MAINTENANCE, TEMPORARY DISPOSAL, VEHICLE TRACKING CONTROL AND CONCRETE TRUCK WASHOUT AREAS WILL BE DETERMINED IN THE FIELD AT THE START OF CONSTRUCTION ACTIVITY AND DELINEATED ON THIS PLAN.

EPC'S EDARP FILE NUMBER: CDR2312

REFERENCE DRAWINGS	####	####	####	####
X-Title-GEC	####	####	####	####
X-Title-GEC-haul route	####	####	####	####
No.	DATE	DESCRIPTION		BY
REVISIONS				
COMPUTER FILE MANAGEMENT				
FILE NAME: S:\20.886.028 Trails PUDSP Major Amend\100 Dwg\104 Plan Sets\Construction Plans\GEC Plan\haul_route GN01.dwg				
CTB FILE: ---				
PLOT DATE: June 20, 2023 11:04:37 AM				
THIS DRAWING IS CURRENT AS OF PLOT DATE AND MAY BE SUBJECT TO CHANGE.				

SHEET KEY

BENCHMARK
COLORADO SPRINGS UTILITIES (FIMS) MONUMENT F206
A BERNTSEN TOP SECURITY MONUMENT SYSTEM WITH A 3.5-INCH DIAMETER ALUMINUM CAP IN A ROAD BOX, LOCATED ON THE NORTHWEST CORNER OF FONTAINE BOULEVARD AND POWERS BOULEVARD.
ELEVATION - 5897.89' U.S. SURVEY FT

BASIS OF BEARING
BEARINGS ARE BASED ON THE NORTH LINE OF THE NORTHWEST QUARTER OF SECTION 9, TOWNSHIP 15 SOUTH, RANGE 65 WEST OF THE 6TH P.M. SAID LINE BEARS S89°51'23"E FROM THE NORTHWEST CORNER OF SAID SECTION 9 (2 1/2" AULM. CAP PLS 17664) TO THE N 1/2 CORNER OF SAID SECTION 9 (3 1/2" AULM. CAP PLS 10377)

PREPARED BY:

SEAL

PRELIMINARY
THIS DRAWING HAS NOT BEEN APPROVED BY GOVERNING AGENCIES AND IS SUBJECT TO CHANGE

FOR AND ON BEHALF OF
MATRIX DESIGN GROUP, INC.
PROJECT No. 23.886.078

TRAILS AT ASPEN RIDGE - STOCKPILE				
CONSTRUCTION DRAWINGS GRADING AND EROSION CONTROL PLANS				
GENERAL NOTES				
DESIGNED BY:	NMS	SCALE	DATE ISSUED:	MAY 2023
DRAWN BY:	TRS	HORIZ	N/A	DRAWING No.
CHECKED BY:	NMS	VERT.	N/A	2 OF 8
				GN01



Know what's below. Call before you dig.

EROSION CONTROL LEGEND

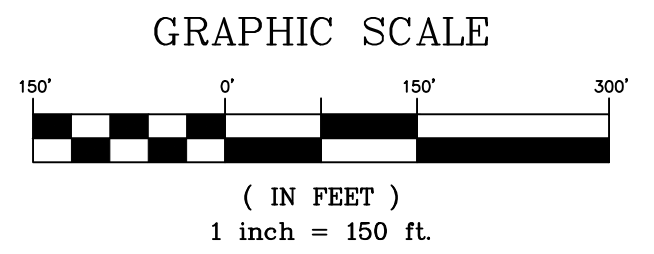
INITIAL BMPs	
	SILT FENCE
	VEHICLE TRACKING CONTROL
	TEMPORARY SEDIMENT BASINS
INTERIM BMPs	
	STOCKPILE MANAGEMENT
	SURFACE ROUGHENING ON STOCKPILES SLOPES FLATTER THAN 3:1
	SLOPE TRACKING ON 3:1 SLOPES
FINAL BMPs	
	SEEDING AND MULCHING
	EROSION CONTROL BLANKET IN FINAL STAGE
	CULVERT INLET PROTECTION/ OUTLET PROTECTION
	DRAINAGE SWALE WITH EROSION CONTROL BLANKET
GENERAL ITEMS	
	PROPOSED CONTOURS
	EXISTING CONTOURS
	SLOPE LABEL
	PROPERTY LINE
	LIMITS OF DISTURBANCE/ CONSTRUCTION SITE BOUNDARY
	PROPOSED TEMPORARY ROAD

Please also add TSB to the list of Final BMPs below. We think it'd be best to just leave them in place and seed them when the stockpiles are complete.

Swale needs to be installed in interim phase (soon after installation of TSB and hauling begins) in order to convey runoff from all vegetated soils to TSBs.

It's unclear what the intended difference is between these two notes is, especially since a Landscape Plan was not submitted. Revise to clarify.

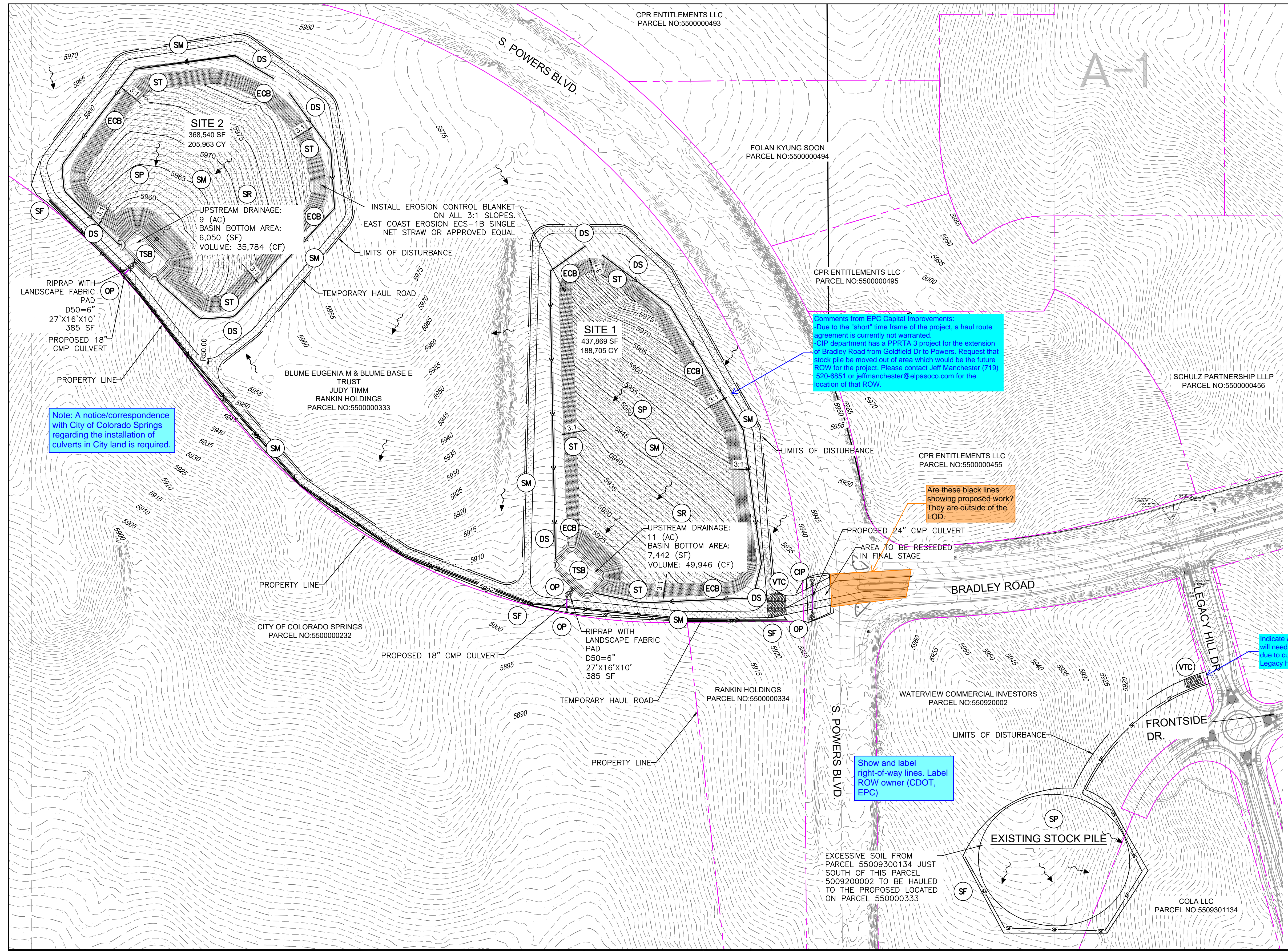
Likely just need one note for seeding req's that summarizes or references DCMv2 - Section 3.2 - General Principles - Basic Grading, Erosion and Stormwater Quality Requirements and General Prohibitions #16:



16. Soil erosion control measures completed within twenty-or been completed. Disturbed dormant for longer than 30 area that is going to remain temporary soil erosion control erosion control measures a

- NOTES:
- ALL DRAINAGE SWALES SHALL HAVE A MINIMUM LONGITUDINAL SLOPE MINIMUM 1.5' DEPTH, AND MAXIMUM 3:1 SIDE SLOPES. LINE/SWALES WITH COAST EROSION ECC-2B DOUBLE NET COONUT BIODEGRADABLE ROLLED EROSION CONTROL PRODUCT OR APPROVED EQUAL.
 - ALL EROSION CONTROL BLANKET SHALL BE INSPECTED 24-MONTHS AFTER INSTALLATION. EROSION CONTROL BLANKET MAY BE REQUIRED TO RE-INSTALLED PER MANUFACTURER SPECIFICATIONS. CONTRACTOR TO USE SLOPE TRACKING OR EROSION CONTROL BLANKET ON SLOPES 3:1 OR GREATER PER CITY STANDARDS.
 - ALL EROSION CONTROL MEASURES REQUIRED WITHIN THE INITIAL AND INTERIM PHASE OF THIS PLAN ARE TO REMAIN UNTIL FINAL STABILIZATION IS ACHIEVED UNLESS OTHERWISE NOTED.
 - AREAS WITHIN THE SITE THAT ARE INACTIVE FOR 30 DAYS OR GREATER TO BE STABILIZED WITH NATIVE SEED AS SHOWN OR ACCORDING TO AN APPROVED LANDSCAPE PLAN.
 - AREAS WITHIN THE SITE THAT ARE INACTIVE FOR 60 DAYS OR GREATER TO BE STABILIZED WITH NATIVE SEED, AS SHOWN ON SHEET ECN03.
 - CONTRACTOR TO PROVIDE DOCUMENTATION FROM GEOTECHNICAL ENGINEER TO CONFIRM STOCKPILES MAY HAVE 3:1 SIDE SLOPES WITH NO COMPACTION PRIOR TO PLACEMENT OF EROSION CONTROL BLANKET.

EPC's EDARP FILE NUMBER: CDR2312



Note: A notice/correspondence with City of Colorado Springs regarding the installation of culverts in City land is required.

Show and label right-of-way lines. Label ROW owner (CDOT, EPC)

REFERENCE DRAWINGS	NO.	DATE	DESCRIPTION	BY
X-886-EX SURVEY	###	###	###	###
886-pr legacy drive	###	###	###	###
X-Title-GEC	###	###	###	###
X-886-EX-BASE	###	###	###	###
X-886-PR SITE_F1	###	###	###	###
X-886-PR SITE_F2	###	###	###	###
886-PR Legacy Drive-Roundabout	###	###	###	###
X-Title-GEC-haul route	###	###	###	###
Parade	###	###	###	###

COMPUTER FILE MANAGEMENT	
FILE NAME:	S:\20.886.028 Trails PUDSP Major Amend\100 Dwg\104 Plan Sets\Construction Plans\GEC Plan\haul_route GEC.dwg
CTB FILE:	---
PLOT DATE:	June 20, 2023 11:14:51 AM
THIS DRAWING IS CURRENT AS OF PLOT DATE AND MAY BE SUBJECT TO CHANGE.	

SHEET KEY

BENCHMARK
COLORADO SPRINGS UTILITIES (FIMS) MONUMENT F206
A BERNTSEN TOP SECURITY MONUMENT SYSTEM WITH A 3.5-INCH DIAMETER ALUMINUM CAP IN A ROAD BOX, LOCATED ON THE NORTHWEST CORNER OF FONTAINE BOULEVARD AND POWERS BOULEVARD.
ELEVATION - 5897.89' U.S. SURVEY FT

BASIS OF BEARING
BEARINGS ARE BASED ON THE NORTH LINE OF THE NORTHWEST QUARTER OF SECTION 9, TOWNSHIP 15 SOUTH, RANGE 65 WEST OF THE 6TH P.M. SAID LINE BEARS S89°51'23"E FROM THE NORTHWEST CORNER OF SAID SECTION 9 (2 1/2" AULM. CAP PLS 17664) TO THE N 1/4 CORNER OF SAID SECTION 9 (3 1/2" AULM. CAP PLS 10377)

PREPARED BY:

SEAL

PRELIMINARY
THIS DRAWING HAS NOT BEEN APPROVED BY GOVERNING AGENCIES AND IS SUBJECT TO CHANGE

FOR AND ON BEHALF OF
MATRIX DESIGN GROUP, INC.
PROJECT NO. 23.886.078

DESIGNED BY: NMS
DRAWN BY: TRS
CHECKED BY: NMS

SCALE
HORIZ. N/A
VERT. N/A

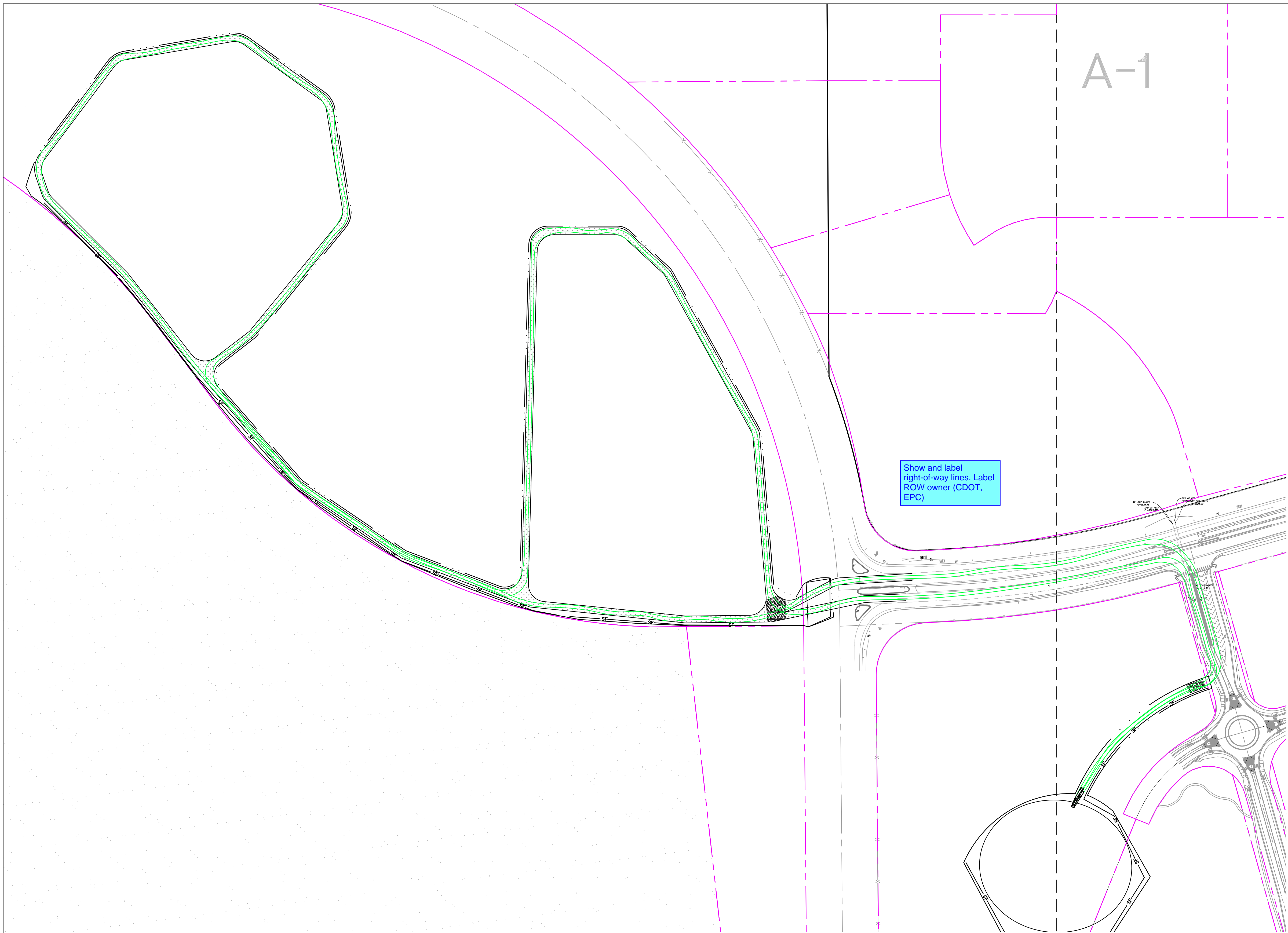
DATE ISSUED: MAY 2023
SHEET: 3 OF 8

DRAWING No.: GEC01

TRAILS AT ASPEN RIDGE - STOCKPILE

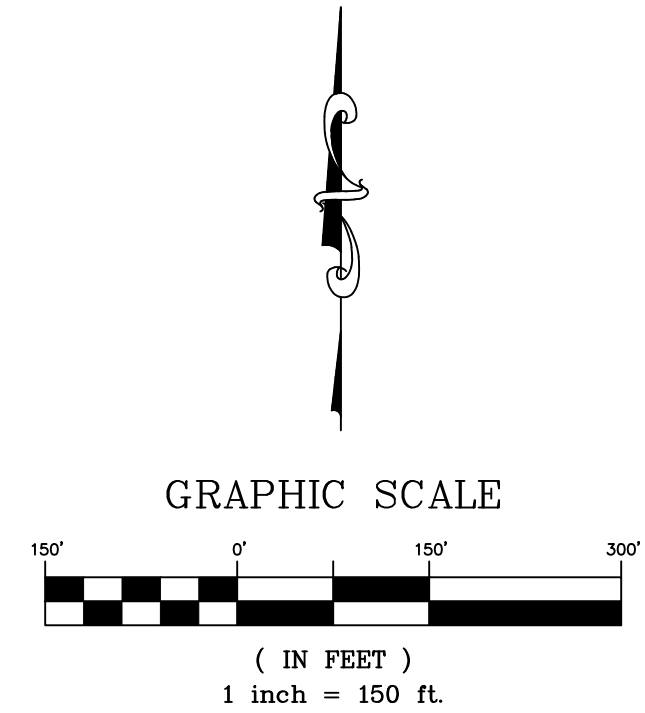
CONSTRUCTION DRAWINGS
GRADING AND EROSION CONTROL PLANS

GRADING AND EROSION CONTROL PLAN



Label roads

Show and label right-of-way lines. Label ROW owner (CDOT, EPC)



EPC'S EDARP FILE NUMBER: CDR2312

REF	DRAWING	NO.	DATE	DESCRIPTION	BY
###	###	###			
###	###	###			
###	###	###			
###	###	###			
###	###	###			
###	###	###			
###	###	###			
###	###	###			
###	###	###			
###	###	###			
###	###	###			
###	###	###			

COMPUTER FILE MANAGEMENT	
FILE NAME:	S:\20.886.028 Trails PUDSP Major Amend\100 Dwg\104 Plan Sets\Construction Plans\GEC Plan\haul_route GEC.dwg
CTB FILE:	---
PLOT DATE:	June 20, 2023 11:05:02 AM
THIS DRAWING IS CURRENT AS OF PLOT DATE AND MAY BE SUBJECT TO CHANGE.	

NO.	DATE	DESCRIPTION	BY
###	###	###	###
###	###	###	###
###	###	###	###
###	###	###	###
###	###	###	###
###	###	###	###
###	###	###	###
###	###	###	###
###	###	###	###
###	###	###	###
###	###	###	###
###	###	###	###
###	###	###	###
###	###	###	###
###	###	###	###
###	###	###	###
###	###	###	###
###	###	###	###
###	###	###	###
###	###	###	###
###	###	###	###
###	###	###	###
###	###	###	###
###	###	###	###
###	###	###	###
###	###	###	###

BENCHMARK
 COLORADO SPRINGS UTILITIES (FIMS) MONUMENT F206
 A BERNTSEN TOP SECURITY MONUMENT SYSTEM WITH A 3.5-INCH DIAMETER ALUMINUM CAP IN A ROAD BOX, LOCATED ON THE NORTHWEST CORNER OF FONTAINE BOULEVARD AND POWERS BOULEVARD.
 ELEVATION - 5897.89' U.S. SURVEY FT

BASIS OF BEARING
 BEARINGS ARE BASED ON THE NORTH LINE OF THE NORTHWEST QUARTER OF SECTION 9, TOWNSHIP 15 SOUTH, RANGE 65 WEST OF THE 6TH P.M. SAID LINE BEARS S89°51'23"E FROM THE NORTHWEST CORNER OF SAID SECTION 9 (2 1/2" AULM. CAP PLS 17664) TO THE N 1/4 CORNER OF SAID SECTION 9 (3 1/2" AULM. CAP PLS 10377)

PREPARED BY:

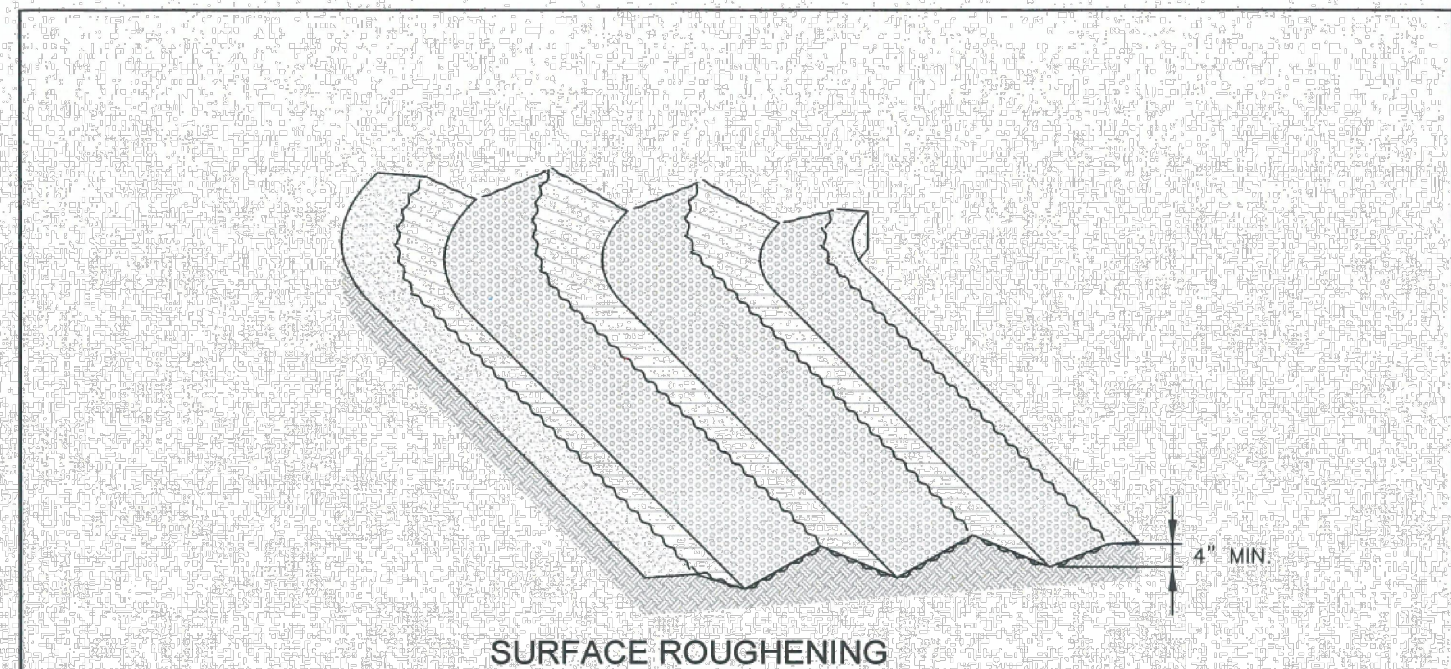
SEAL
PRELIMINARY
 THIS DRAWING HAS NOT BEEN APPROVED BY GOVERNING AGENCIES AND IS SUBJECT TO CHANGE

FOR AND ON BEHALF OF
 MATRIX DESIGN GROUP, INC.
 PROJECT No. 23.886.078

TRAILS AT ASPEN RIDGE - STOCKPILE					
CONSTRUCTION DRAWINGS GRADING AND EROSION CONTROL PLANS					
HAUL ROUTE PLAN					
DESIGNED BY:	NMS	SCALE	DATE ISSUED:	MAY 2023	DRAWING No.
DRAWN BY:	TRS	HORIZ	N/A	4 OF 8	HR01
CHECKED BY:	NMS	VERT.	N/A	SHEET	



Know what's below.
Call before you dig.



SURFACE ROUGHENING

INSTALLATION NOTES:

1. SURFACE ROUGHENING MAY BE USED IN AREAS FLATTER THAN 3:1. INSTALL FURROWS ALONG CONTOUR TO INTERCEPT SHEET FLOW.
2. SURFACE ROUGHENING MAY BE ACCOMPLISHED BY FURROWING, SCARIFYING, RIPPING OR DISKING THE SOIL.
3. FURROWS MUST BE A MINIMUM OF 4" IN DEPTH.
4. SURFACE ROUGHENING SHALL NOT BE USED ON EXTREMELY SANDY OR ROCKY SOILS.

MAINTENANCE NOTES:

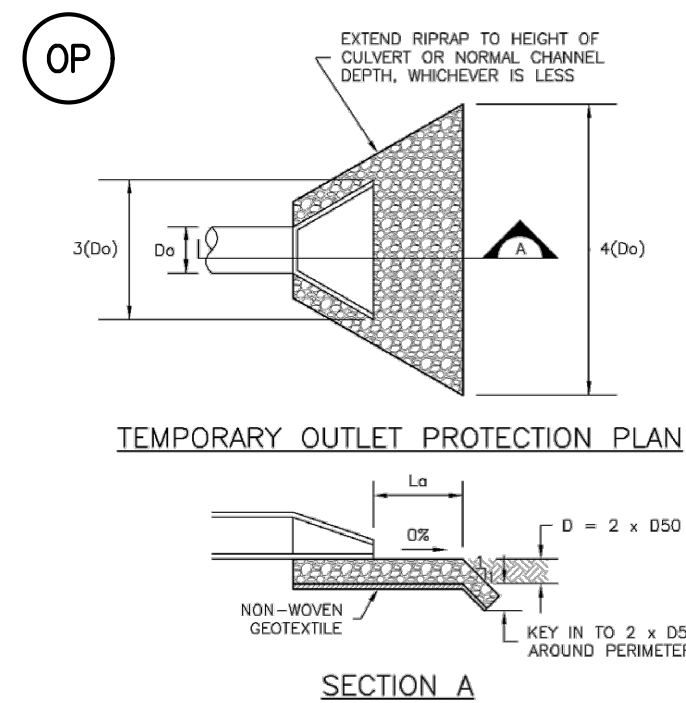
1. FREQUENT OBSERVATIONS AND MAINTENANCE ARE NECESSARY TO MAINTAIN CONTROL MEASURES IN EFFECTIVE OPERATING CONDITION. INSPECTIONS AND CORRECTIVE MEASURES SHOULD BE DOCUMENTED THOROUGHLY.
2. VEHICLES AND EQUIPMENT SHALL NOT BE DRIVEN OVER AREAS THAT HAVE BEEN SURFACE ROUGHENED.



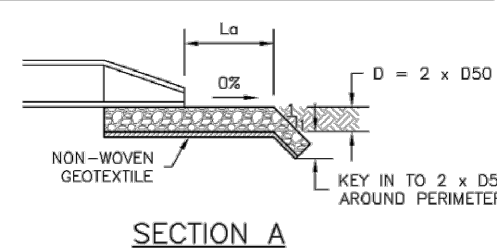
SURFACE ROUGHENING

APPROVED: _____
PROJECT MANAGER
ISSUED: 10/7/19 REVISED: 8/19/2020 DRAWING NO. 900-SR

SR



TEMPORARY OUTLET PROTECTION PLAN



PIPE DIAMETER, D _p (INCHES)	DISCHARGE, Q (CFS)	APRON LENGTH, L _a (FEET)	RIPRAP D ₅₀ DIAMETER MIN (INCHES)
8	2.5	5	4
	5	10	6
12	5	10	4
	10	13	6
18	10	10	6
	20	16	9
	30	23	12
	40	26	16
24	30	16	9
	40	26	9
	50	28	12
	60	30	16

OP-1. TEMPORARY OUTLET PROTECTION

TEMPORARY OUTLET PROTECTION

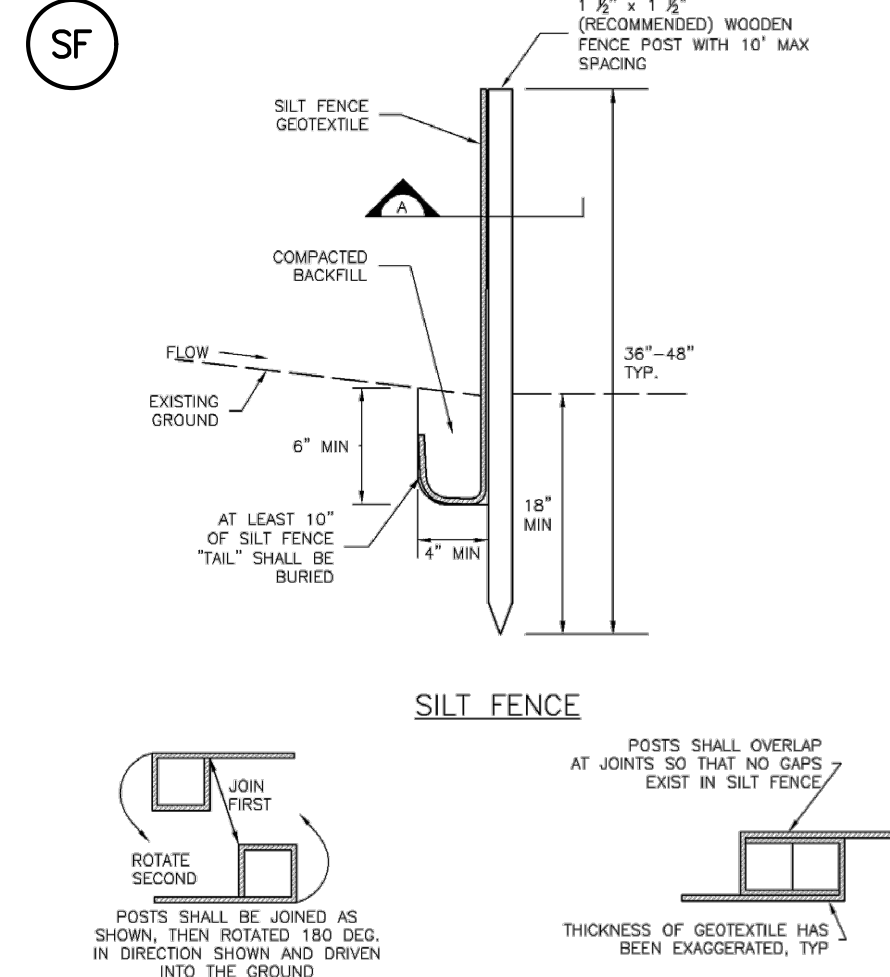
INSTALLATION NOTES:

1. SEE PLAN VIEW FOR:
 - LOCATION OF OUTLET PROTECTION.
 - DIMENSIONS OF OUTLET PROTECTION.
2. DETAIL IS INTENDED FOR PIPES WITH SLOPE ≤ 10%. ADDITIONAL EVALUATION OF RIPRAP SIZING AND OUTLET PROTECTION DIMENSIONS REQUIRED FOR STEEPER SLOPES.
3. TEMPORARY OUTLET PROTECTION INFORMATION IS FOR OUTLETS INTENDED TO BE UTILIZED LESS THAN 2 YEARS.

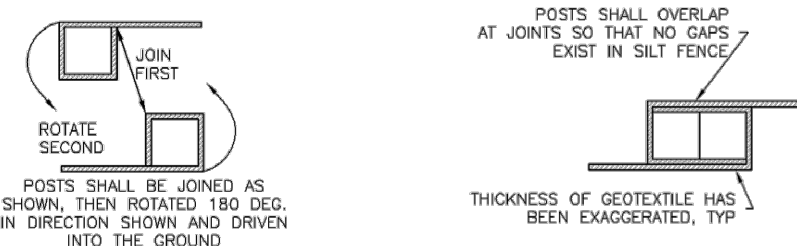
MAINTENANCE NOTES:

1. INSPECT BMPs EACH WORKDAY, AND MAINTAIN THEM IN EFFECTIVE OPERATING CONDITION. MAINTENANCE OF BMPs SHOULD BE PROACTIVE, NOT REACTIVE. INSPECT BMPs AS SOON AS POSSIBLE (AND ALWAYS WITHIN 24 HOURS) FOLLOWING A STORM THAT CAUSES SURFACE EROSION, AND PERFORM NECESSARY MAINTENANCE.
2. FREQUENT OBSERVATIONS AND MAINTENANCE ARE NECESSARY TO MAINTAIN BMPs IN EFFECTIVE OPERATING CONDITION. INSPECTIONS AND CORRECTIVE MEASURES SHOULD BE DOCUMENTED THOROUGHLY.
3. WHERE BMPs HAVE FAILED, REPAIR OR REPLACEMENT SHOULD BE INITIATED UPON DISCOVERY OF THE FAILURE.

**Figure EC-8
Temporary Outlet Protection**
Urban Drainage and Flood Control District
Urban Storm Drainage Criteria Manual Volume 3



SILT FENCE



**SECTION A
SILT FENCE NOTES**

SILT FENCE INSTALLATION NOTES:

1. SILT FENCE MUST BE PLACED AWAY FROM THE TOE OF THE SLOPE TO ALLOW FOR WATER PONDING. SILT FENCE AT TOP OF A SLOPE SHOULD BE INSTALLED IN A FLAT LOCATION AT LEAST SEVERAL FEET (2-5 FT) FROM THE TOE OF THE SLOPE TO ALLOW ROOM FOR PONDING AND DEPOSITION.
2. A UNIFORM 6" x 4" ANCHOR TRENCH SHALL BE EXCAVATED USING TRENCHER OR SILT FENCE INSTALLATION DEVICE. NO ROAD GRADERS, BACKHOES, OR SIMILAR EQUIPMENT SHALL BE USED.
3. COMPACT ANCHOR TRENCH BY HAND OR WITH A "JUMPING JACK" OR BY WHEEL ROLLING. COMPACTION SHALL BE SUCH THAT SILT FENCE RESISTS BEING PULLED OUT OF ANCHOR TRENCH BY HAND.
4. SILT FENCE SHALL BE PULLED TIGHT AS IT IS ANCHORED TO THE STAKES. THERE SHOULD BE NO NOTICEABLE SAG BETWEEN STAKES AFTER IT HAS BEEN ANCHORED TO THE STAKES.
5. SILT FENCE FABRIC SHALL BE ANCHORED TO THE STAKES USING 1" HEAVY DUTY STAPLES OR NAILS WITH 1" HEADS. STAPLES AND NAILS SHOULD BE PLACED 3" ALONG THE FABRIC DOWN THE STAKE.
6. AT THE END OF A RUN OF SILT FENCE ALONG A CONTOUR, THE SILT FENCE SHOULD BE TURNED PERPENDICULAR TO THE CONTOUR TO CREATE A "J-HOOK" THE "J-HOOK" EXTENDING PERPENDICULAR TO THE CONTOUR SHOULD BE OF SUFFICIENT LENGTH TO KEEP RUNOFF FROM FLOWING AROUND THE END OF THE SILT FENCE (TYPICALLY 10' - 20').
7. SILT FENCE SHALL BE IN STALLED PRIOR TO ANY LAND DISTURBING ACTIVITIES.

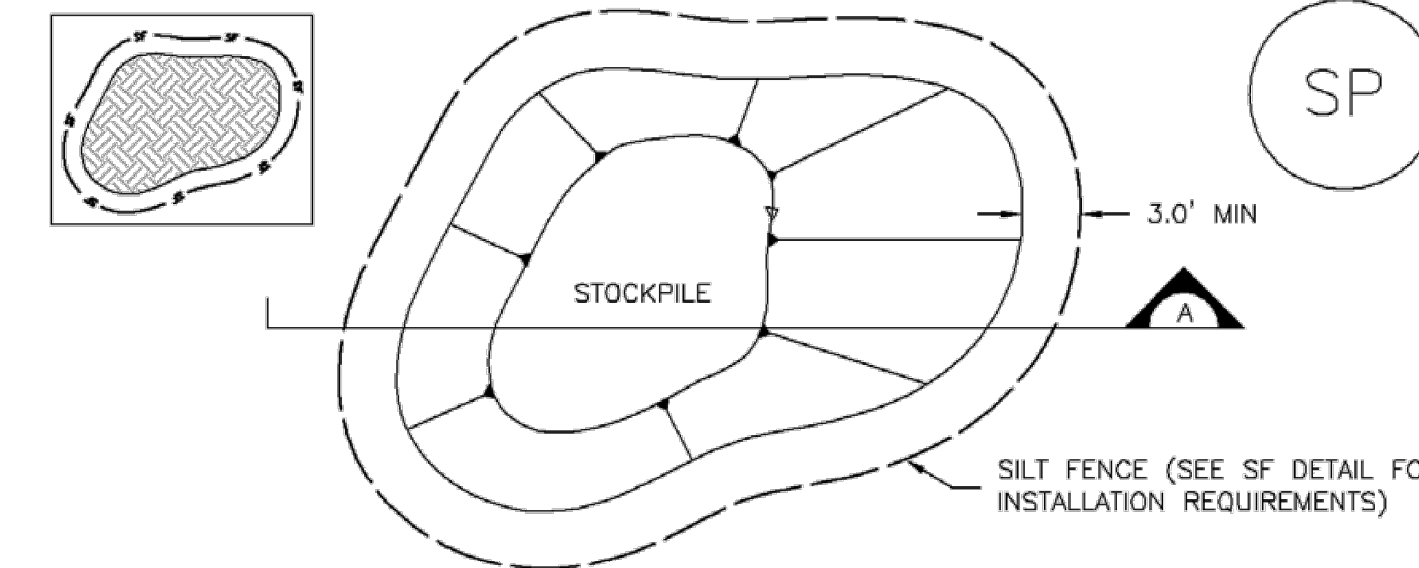
SILT FENCE MAINTENANCE NOTES:

1. INSPECT BMPs EACH WORKDAY, AND MAINTAIN THEM IN EFFECTIVE OPERATING CONDITION. MAINTENANCE OF BMPs SHOULD BE PROACTIVE, NOT REACTIVE. INSPECT BMPs AS SOON AS POSSIBLE (AND ALWAYS WITHIN 24 HOURS) FOLLOWING A STORM THAT CAUSES SURFACE EROSION, AND PERFORM NECESSARY MAINTENANCE.
2. FREQUENT OBSERVATIONS AND MAINTENANCE ARE NECESSARY TO MAINTAIN BMPs IN EFFECTIVE OPERATING CONDITION. INSPECTIONS AND CORRECTIVE MEASURES SHOULD BE DOCUMENTED THOROUGHLY.
3. WHERE BMPs HAVE FAILED, REPAIR OR REPLACEMENT SHOULD BE INITIATED UPON DISCOVERY OF THE FAILURE.
4. SEDIMENT ACCUMULATED UPSTREAM OF THE SILT FENCE SHALL BE REMOVED AS NEEEDED TO MAINTAIN FUNCTIONALITY OF THE BMP. TYPICALLY WHEN DEPTH OF ACCUMULATED SEDIMENTS IS APPROXIMATELY 6".
5. REPAIR OR REPLACE SILT FENCE WHEN THERE ARE SIGN OF WEAR, SUCH AS SAGGING, TEARING, OR COLLAPSE.
6. SILT FENCE IS TO REMAIN IN PLACE UNTIL THE UPSTREAM DISTURBED AREA IS STABILIZED AND APPROVED BY THE LOCAL JURISDICTION, OR IS REPLACED BY AN EQUIVALENT PERIMETER SEDIMENT CONTROL BMP.
7. WHEN SILT FENCE IS REMOVED, ALL DISTURBED AREAS SHALL BE COVERED WITH TOP SOIL, SEEDED AND MULCHED OR OTHERWISE STABILIZED AS APPROVED BY LOCAL JURISDICTION.

**Figure SC-1
Silt Fence**
Urban Drainage and Flood Control District
Urban Storm Drainage Criteria Manual Volume 3

Stockpile Management (SP)

MM-2



STOCKPILE PROTECTION PLAN



SECTION A

SP-1. STOCKPILE PROTECTION

STOCKPILE PROTECTION INSTALLATION NOTES:

1. SEE PLAN VIEW FOR:
 - LOCATION OF STOCKPILES.
 - TYPE OF STOCKPILE PROTECTION.
2. INSTALL PERIMETER CONTROLS IN ACCORDANCE WITH THEIR RESPECTIVE DESIGN DETAILS. SILT FENCE IS SHOWN IN THE STOCKPILE PROTECTION DETAILS; HOWEVER, OTHER TYPES OF PERIMETER CONTROLS INCLUDING SEDIMENT CONTROL LOGS OR ROCK SOCKS MAY BE SUITABLE IN SOME CIRCUMSTANCES. CONSIDERATIONS FOR DETERMINING THE APPROPRIATE TYPE OF PERIMETER CONTROL FOR A STOCKPILE INCLUDE WHETHER THE STOCKPILE IS LOCATED ON A PERVIOUS OR IMPERVIOUS SURFACE, THE RELATIVE HEIGHTS OF THE PERIMETER CONTROL AND STOCKPILE, THE ABILITY OF THE PERIMETER CONTROL TO CONTAIN THE STOCKPILE WITHOUT FAILING IN THE EVENT THAT MATERIAL FROM THE STOCKPILE SHIFTS OR SLUMPS AGAINST THE PERIMETER, AND OTHER FACTORS.
3. STABILIZE THE STOCKPILE SURFACE WITH SURFACE ROUGHENING, TEMPORARY SEEDING AND MULCHING, EROSION CONTROL BLANKETS, OR SOIL BINDERS. SOILS STOCKPILED FOR AN EXTENDED PERIOD (TYPICALLY FOR MORE THAN 60 DAYS) SHOULD BE SEEDED AND MULCHED WITH A TEMPORARY GRASS COVER ONCE THE STOCKPILE IS PLACED (TYPICALLY WITHIN 14 DAYS). USE OF MULCH ONLY OR A SOIL BINDER IS ACCEPTABLE IF THE STOCKPILE WILL BE IN PLACE FOR A MORE LIMITED TIME PERIOD (TYPICALLY 30-60 DAYS).
4. FOR TEMPORARY STOCKPILES ON THE INTERIOR PORTION OF A CONSTRUCTION SITE, WHERE OTHER DOWNGRADIENT CONTROLS, INCLUDING PERIMETER CONTROL, ARE IN PLACE, STOCKPILE PERIMETER CONTROLS MAY NOT BE REQUIRED.

EPC'S EDARP FILE NUMBER: CDR2312

REFERENCE DRAWINGS	No.	DATE	DESCRIPTION	BY
X-Tile-GEC				
X-Tile-GEC-haul route				
COMPUTER FILE MANAGEMENT				
FILE NAME: S:\20.886.028 Trails PUDSP Major Amend\100 Dwg\104 Plan Sets\Construction Plans\GEC Plan\haul_route ECN01.dwg				
CTB FILE: ---				
PLOT DATE: June 20, 2023 11:05:23 AM				
THIS DRAWING IS CURRENT AS OF PLOT DATE AND MAY BE SUBJECT TO CHANGE.				

BENCHMARK	BENCHM
COLORADO SPRINGS UTILITIES (FIMS) MONUMENT F206	
A BERNTSEN TOP SECURITY MONUMENT SYSTEM WITH A 3.5-INCH DIAMETER ALUMINUM CAP IN A ROAD BOX, LOCATED ON THE NORTHWEST CORNER OF FONTAINE BOULEVARD AND POWERS BOULEVARD.	
ELEVATION - 5897.89' U.S. SURVEY FT	

BASIS OF BEARING	PREPARED BY:
BEARINGS ARE BASED ON THE NORTH LINE OF THE NORTHWEST QUARTER OF SECTION 9, TOWNSHIP 15 SOUTH, RANGE 65 WEST OF THE 6TH P.M. SAID LINE BEARS S89°51'23"E FROM THE NORTHWEST CORNER OF SAID SECTION 9 (2 1/2" AULM. CAP PLS 17664) TO THE N 1/2 CORNER OF SAID SECTION 9 (3 1/2" AULM. CAP PLS 10377)	

SEAL	DESIGNED BY:	SCALE	DATE ISSUED:	DRAWING No.
<p>PRELIMINARY THIS DRAWING HAS NOT BEEN APPROVED BY GOVERNING AGENCIES AND IS SUBJECT TO CHANGE</p>	NMS		MAY 2023	ECN01
	KGI	HORIZ		
	NMS	VERT.	N/A	

TRAILS AT ASPEN RIDGE - STOCKPILE	
CONSTRUCTION DRAWINGS GRADING AND EROSION CONTROL PLANS	
EROSION CONTROL DETAILS	
CHECKED BY:	5 OF 8



Know what's below.
Call before you dig.

Replace with EPC approved VTC detail (VT-1 and VT-2 in DCMv2, Chap 3.3) or revise to be 75ft min length.

AGGREGATE VEHICLE TRACKING CONTROL

INSTALLATION NOTES:

- A STABILIZED CONSTRUCTION ENTRANCE/EXIT SHOULD BE LOCATED AT ALL POINTS WHERE VEHICLES EXIT THE CONSTRUCTION SITE TO ADJACENT ROADWAY.
- STABILIZED CONSTRUCTION ENTRANCE/EXITS SHALL BE INSTALLED PRIOR TO ANY LAND DISTURBING ACTIVITIES.
- RADIUS MUST BE ADEQUATE FOR INTENDED CONSTRUCTION VEHICLE TURNING.
- ROCK SHOULD CONSIST OF 6" MINUS ROCK.
- INSTALL CONSTRUCTION FENCE ON BOTH SIDES OF VEHICLE TRACKING CONTROL PAD WHEN NEEDED OR REQUIRED BY INSPECTOR.

MAINTENANCE NOTES:

- FREQUENT OBSERVATIONS AND MAINTENANCE ARE NECESSARY TO MAINTAIN CONTROL MEASURES IN EFFECTIVE OPERATING CONDITION. INSPECTIONS AND CORRECTIVE MEASURES SHOULD BE DOCUMENTED THOROUGHLY.
- SEDIMENT TRACKED ONTO THE ADJACENT ROAD SHALL BE REMOVED DAILY BY SWEEPING OR SHOVELING, AND NEVER WASHED DOWN STORM DRAINS.
- ROUGHEN, REPLACE AND/OR ADD ROCK AS NEEDED TO MAINTAIN CONSISTENT DEPTH AND TO PREVENT SEDIMENT TRACKING ONTO ADJACENT STREET.
- PERMANENTLY STABILIZE AREA AFTER VEHICLE TRACKING CONTROL IS REMOVED.

VEHICLE TRACKING CONTROL	
APPROVED:	
SHEET MANAGER:	
ISSUED:	10/7/19
REVISION:	8/19/2020
DRAWING NO.:	900-VTC

Earth Dikes and Drainage Swales (ED/DS) EC-10

ED-1. COMPACTED UNLINED EARTH DIKE FORMED BY BERM

DS-1. COMPACTED UNLINED EXCAVATED SWALE

DS-2. COMPACTED UNLINED SWALE FORMED BY CUT AND FILL

DS-3. ECB LINED SWALE (CUT AND FILL OR BERM)

CULVERT INLET PROTECTION PLAN

SECTION A-A'

SECTION B-B'

INSTALLATION NOTES:

- SEE ROCK SOCK DETAIL.

MAINTENANCE NOTES:

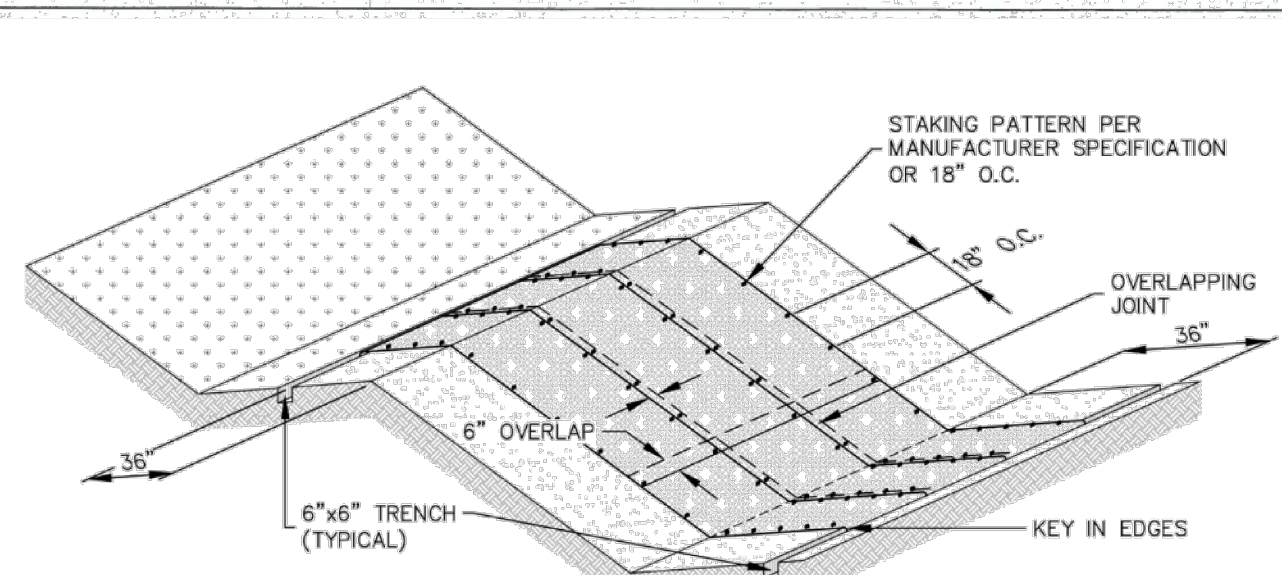
- FREQUENT OBSERVATIONS AND MAINTENANCE ARE NECESSARY TO MAINTAIN CONTROL MEASURES IN EFFECTIVE OPERATING CONDITION. INSPECTIONS AND CORRECTIVE MEASURES SHOULD BE DOCUMENTED THOROUGHLY.
- ACCUMULATED SEDIMENT UPSTREAM OF THE CULVERT SHALL BE REMOVED WHEN THE SEDIMENT DEPTH IS $\frac{1}{2}$ HEIGHT OF THE ROCK SOCK.
- CULVERT INLET PROTECTION SHALL REMAIN UNTIL THE UPSTREAM AREA IS PERMANENTLY STABILIZED.

CIP	STORMWATER ENTERPRISE	CULVERT INLET PROTECTION	
	APPROVED:		
ISSUED:	10/7/19	REVISION:	8/19/2020
DRAWING NO.:	900-CIP		

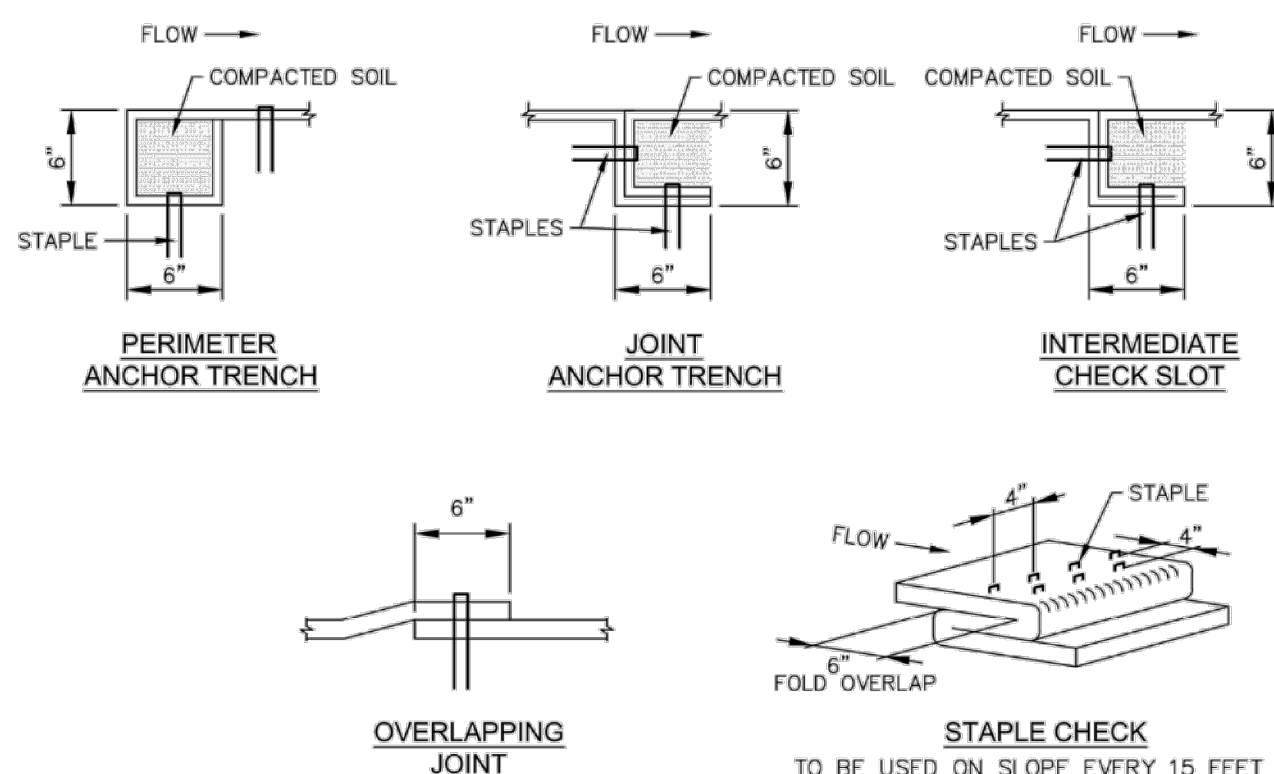
November 2010 Urban Drainage and Flood Control District Urban Storm Drainage Criteria Manual Volume 3 ED/DS-3

EPC'S EDARP FILE NUMBER: CDR2312

REFERENCE DRAWINGS X-Tile-GEC X-Tile-GEC-haul route	###	###	###	###	SHEET KEY N BENCHMARK COLORADO SPRINGS UTILITIES (FIMS) MONUMENT F206 A BERNTSEN TOP SECURITY MONUMENT SYSTEM WITH A 3.5-INCH DIAMETER ALUMINUM CAP IN A ROAD BOX, LOCATED ON THE NORTHWEST CORNER OF FONTAINE BOULEVARD AND POWERS BOULEVARD. ELEVATION - 5897.89' U.S. SURVEY FT BASIS OF BEARING BEARINGS ARE BASED ON THE NORTH LINE OF THE NORTHWEST QUARTER OF SECTION 9, TOWNSHIP 15 SOUTH, RANGE 65 WEST OF THE 6TH P.M. SAID LINE BEARS S89°51'23"E FROM THE NORTHWEST CORNER OF SAID SECTION 9 (2 1/2" AULM. CAP PLS 17664) TO THE N 1/2 CORNER OF SAID SECTION 9 (3 1/2" AULM. CAP PLS 10377)	SEAL PRELIMINARY THIS DRAWING HAS NOT BEEN APPROVED BY GOVERNING AGENCIES AND IS SUBJECT TO CHANGE	TRAILS AT ASPEN RIDGE - STOCKPILE	
	No.	DATE	DESCRIPTION	BY			CONSTRUCTION DRAWINGS GRADING AND EROSION CONTROL PLANS EROSION CONTROL DETAILS	
COMPUTER FILE MANAGEMENT FILE NAME: S:\20.886.028 Trails PUDSP Major Amend\100 Dwg\104 Plan Sets\Construction Plans\GEC Plan\haul_route ECN01.dwg CTB FILE: --- PLOT DATE: June 20, 2023 11:05:27 AM THIS DRAWING IS CURRENT AS OF PLOT DATE AND MAY BE SUBJECT TO CHANGE.					DESIGNED BY: NMS DRAWN BY: KGI CHECKED BY: NMS	SCALE: HORIZ N/A DATE ISSUED: MAY 2023 SHEET: 6 OF 8	DRAWING No. ECN02	



EROSION CONTROL BLANKET



ECB

STORMWATER ENTERPRISE			EROSION CONTROL BLANKET
APPROVED:			
ISSUED:	REVISED:	DRAWING NO.	
10/7/19	8/19/2020	900-ECB-1	

- INSTALLATION NOTES**
- 100% NATURAL AND BIODEGRADABLE MATERIALS ARE REQUIRED FOR EROSION CONTROL BLANKETS. TRM PRODUCTS MAY BE USED WHERE APPROPRIATE AS DESIGNATED BY THE ENGINEER.
 - IN AREAS WHERE EROSION CONTROL BLANKETS ARE SHOWN ON THE PLANS, THE PERMITTEE SHALL PLACE TOPSOIL AND PERFORM FINAL GRADING, SURFACE PREPARATION, AND SEEDING AND MULCHING. SUBGRADE SHALL BE SMOOTH AND MOIST PRIOR TO EROSION CONTROL BLANKET INSTALLATION; AND THE EROSION CONTROL BLANKET SHALL BE IN FULL CONTACT WITH THE SUBGRADE. NO GAPS OR VOIDS SHALL EXIST UNDER THE BLANKET.
 - PERIMETER ANCHOR TRENCH SHALL BE USED ALONG THE OUTSIDE PERIMETER OF ALL BLANKET AREAS.
 - JOINT ANCHOR TRENCH SHALL BE USED TO JOIN ROLLS OF EROSION CONTROL BLANKETS TOGETHER (LONGITUDINALLY AND TRANSVERSELY) FOR ALL EROSION CONTROL BLANKETS.
 - INTERMEDIATE CHECK SLOT OR STAPLE CHECK SHALL BE INSTALLED EVERY 15' DOWN SLOPES. IN DRAINAGEWAYS, INSTALL CHECK SLOTS EVERY 25' PERPENDICULAR TO FLOW DIRECTION.
 - OVERLAPPING JOINT DETAIL SHALL BE USED TO JOIN ROLLS OF EROSION CONTROL BLANKETS TOGETHER FOR EROSION CONTROL BLANKETS ON SLOPES. MATERIAL SPECIFICATIONS OF EROSION CONTROL BLANKETS SHALL CONFORM TO TABLE ECB-1.
 - ANY AREAS OF SEEDING AND MULCHING DISTURBED IN THE PROCESS OF INSTALLING EROSION CONTROL BLANKETS SHALL BE RESEEDED AND MULCHED.
 - STRAW EROSION CONTROL BLANKETS SHALL NOT BE USED WITHIN STREAMS AND DRAINAGE CHANNELS.
 - COMPACT ALL TRENCHES.

- MAINTENANCE NOTES**
- FREQUENT OBSERVATIONS AND MAINTENANCE ARE NECESSARY TO MAINTAIN CONTROL MEASURES IN EFFECTIVE OPERATING CONDITION. INSPECTIONS AND CORRECTIVE MEASURES SHOULD BE DOCUMENTED THOROUGHLY.
 - EROSION CONTROL BLANKETS SHALL BE LEFT IN PLACE TO EVENTUALLY BIODEGRADE. TRM MUST BE REMOVED AT THE DISCRETION OF THE GEC INSPECTOR.
 - ANY EROSION CONTROL BLANKET PULLED OUT, TORN, OR OTHERWISE DAMAGED SHALL BE REPAIRED OR REINSTALLED. ANY SUBGRADE AREAS BELOW GEOTEXTILE THAT HAVE ERODED TO CREATE A VOID UNDER THE BLANKET, OR THAT REMAIN DEVOID OF GRASS SHALL BE REPAIRED, RESEEDED AND MULCHED AND THE EROSION CONTROL BLANKET REINSTALLED.

TABLE ECB-1, EROSION CONTROL BLANKET MATERIAL SPECIFICATIONS

TYPE	COCONUT CONTENT	STRAW CONTENT	EXCELSIOR CONTENT	RECOMMENDED NETTING
STRAW	-	100%	-	DOUBLE/NATURAL
STRAW-COCONUT	30% MIN.	70% MAX.	-	DOUBLE/NATURAL
COCONUT	100%	-	-	DOUBLE/NATURAL
EXCELSIOR	-	-	100%	DOUBLE/NATURAL

ECB

STORMWATER ENTERPRISE			EROSION CONTROL BLANKET
APPROVED:			
ISSUED:	REVISED:	DRAWING NO.	
10/7/19	8/19/2020	900-ECB-2	

SEEDING & MULCHING

ALL SOIL TESTING, SOILS AMENDMENT AND FERTILIZER DOCUMENTATION, AND SEED LOAD AND BAG TICKETS MUST BE ADDED TO THE CSWMP.

SOIL PREPARATION

- IN AREAS TO BE SEED, THE UPPER 6 INCHES OF THE SOIL MUST NOT BE HEAVILY COMPACTED, AND SHOULD BE IN FRIABLE CONDITION. LESS THAN 85% STANDARD PROCTOR DENSITY IS ACCEPTABLE. AREAS OF COMPACTION OR GENERAL CONSTRUCTION ACTIVITY MUST BE SCARIFIED TO A DEPTH OF 6 TO 12 INCHES PRIOR TO SPREADING TOPSOIL TO BREAK UP COMPACTED LAYERS AND PROVIDE A BLENDING ZONE BETWEEN DIFFERENT SOIL LAYERS.
- AREAS TO BE PLANTED SHALL HAVE AT LEAST 4 INCHES OF TOPSOIL SUITABLE TO SUPPORT PLANT GROWTH.
- THE CITY RECOMMENDS THAT EXISTING AND/OR IMPORTED TOPSOIL BE TESTED TO IDENTIFY SOIL DEFICIENCIES AND ANY SOIL AMENDMENTS NECESSARY TO ADDRESS THESE DEFICIENCIES. SOIL AMENDMENTS AND/OR FERTILIZERS SHOULD BE ADDED TO CORRECT TOPSOIL DEFICIENCIES BASED ON SOIL TESTING RESULTS.
- TOPSOIL SHALL BE PROTECTED DURING THE CONSTRUCTION PERIOD TO RETAIN ITS STRUCTURE AVOID COMPACTION, AND TO PREVENT EROSION AND CONTAMINATION. STRIPPED TOPSOIL MUST BE STORED IN AN AREA AWAY FROM MACHINERY AND CONSTRUCTION OPERATIONS, AND CARE MUST BE TAKEN TO PROTECT THE TOPSOIL AS A VALUABLE COMMODITY. TOPSOIL MUST NOT BE STRIPPED DURING UNDESIRABLE WORKING CONDITIONS (E.G. DURING WET WEATHER OR WHEN SOILS ARE SATURATED). TOPSOIL SHALL NOT BE STORED IN SWALES OR IN AREAS WITH POOR DRAINAGE.

SEEDING

- ALLOWABLE SEED MIXES ARE INCLUDED IN THE CITY OF COLORADO SPRINGS STORMWATER CONSTRUCTION MANUAL. ALTERNATIVE SEED MIXES ARE ACCEPTABLE IF INCLUDED IN AN APPROVED LANDSCAPING PLAN.
- SEED SHOULD BE DRILL-SEEDED WHENEVER POSSIBLE.
 - SEED DEPTH MUST BE 1/2 TO 3/4 INCHES WHEN DRILL-SEEDED IS USED.
- BROADCAST SEEDING OR HYDRO-SEEDED WITH TACKIFIER MAY BE SUBSTITUTED ON SLOPES STEEPER THAN 3:1 OR ON OTHER AREAS NOT PRACTICAL TO DRILL SEED.
 - SEEDING RATES MUST BE DOUBLED FOR BROADCAST SEEDING OR INCREASED BY 50% IF USING A BRILLIUM DRILL OR HYDRO-SEEDED
 - BROADCAST SEEDING MUST BE LIGHTLY HAND-RAKED INTO THE SOIL

MULCHING

- MULCHING SHOULD BE COMPLETED AS SOON AS PRACTICABLE AFTER SEEDING, HOWEVER PLANTED AREAS MUST BE MULCHED NO LATER THAN 14 DAYS AFTER PLANTING.
- MULCHING REQUIREMENTS INCLUDE:
 - HAY OR STRAW MULCH
 - MUST ONLY CERTIFIED WEED-FREE AND CERTIFIED SEED-FREE MULCH MAY BE USED. MULCH MUST BE APPLIED AT 2 TONS/ACRE AND ADEQUATELY SECURED BY CRIMPING AND/OR TACKIFIER.
 - CRIMPING MUST NOT BE USED ON SLOPES GREATER THAN 3:1 AND MULCH FIBERS MUST BE TUCKED INTO THE SOIL TO A DEPTH OF 3 TO 4 INCHES.
 - TACKIFIER MUST BE USED IN PLACE OF CRIMPING ON SLOPES STEEPER THAN 3:1.
 - HYDRAULIC MULCHING
 - HYDRAULIC MULCHING IS AN OPTION ON STEEP SLOPES OR WHERE ACCESS IS LIMITED.
 - IF HYDRO-SEEDED IS USED, MULCHING MUST BE APPLIED AS A SEPARATE, SECOND OPERATION.
 - WOOD CELLULOSE FIBERS MIXED WITH WATER MUST BE APPLIED AT A RATE OF 2,000 TO 2,500 POUNDS/ACRE, AND TACKIFIER MUST BE APPLIED AT A RATE OF 100 POUNDS/ACRE.
 - EROSION CONTROL BLANKET
 - EROSION CONTROL BLANKET MAY BE USED IN PLACE OF TRADITIONAL MULCHING METHODS.

SM

STORMWATER ENTERPRISE			SEEDING & MULCHING
APPROVED:			
ISSUED:	REVISED:	DRAWING NO.	
10/7/19	8/19/2020	900-SM	

SEED MIX NOTES:

DEVELOPED BY THE EL PASO COUNTY CONSERVATION DISTRICT

SEEDING RATE:
BROADCAST: 20-25 LBS/ACRE
DRILLED: 15-20 LBS/ACRE

MIX CONTAINS:

SPECIES	VARIETY	LBS. LIVE SEED PER ACRE
NATIVE BIG BLUESTEM	KAW, BISON, CHAMP	1.08
NATIVE LITTLE BLUESTEM	SCHIZACHYRIUM SCOPARIUM	0.12
NATIVE GREEN NEEDLEGRASS	LODROM	0.48
NATIVE WESTERN WHEATGRASS	ARRIBA, BARTON	1.60
NATIVE SIDEOATS GRAMA	VAUGHN, BUTTE, EL RENO, NINER	0.46
NATIVE SWITCHGRASS	BLACKWELL, GREENVILLE	0.20
NATIVE PRAIRIE SANDREED	GOSHEN, PRONGHORN	0.32
NATIVE YELLOW INDIANGRASS	CHEYENNE, HOLT, LLANO	0.51

EPC'S EDARP FILE NUMBER: CDR2312

REFERENCE DRAWINGS	####	####	####	SHEET KEY
	####	####	####	
	####	####	####	
X>Title-GEC X>Title-GEC-haul route	###	###	###	
No.	DATE	DESCRIPTION		BY
REVISIONS				
COMPUTER FILE MANAGEMENT				
FILE NAME: S:\20.886.028 Trails PUDSP Major Amend\100 Dwg\104 Plan Sets\Construction Plans\GEC Plan\haul_route ECN01.dwg				
CTB FILE: ---				
PLOT DATE: June 20, 2023 11:05:31 AM				
THIS DRAWING IS CURRENT AS OF PLOT DATE AND MAY BE SUBJECT TO CHANGE.				

BENCHMARK
 COLORADO SPRINGS UTILITIES (FIMS) MONUMENT F206
 A BERNTSEN TOP SECURITY MONUMENT SYSTEM WITH A 3.5-INCH DIAMETER ALUMINUM CAP IN A ROAD BOX, LOCATED ON THE NORTHWEST CORNER OF FONTAINE BOULEVARD AND POWERS BOULEVARD.
 ELEVATION - 5897.89' U.S. SURVEY FT

BASIS OF BEARING
 BEARINGS ARE BASED ON THE NORTH LINE OF THE NORTHWEST QUARTER OF SECTION 9, TOWNSHIP 15 SOUTH, RANGE 65 WEST OF THE 6TH P.M. SAID LINE BEARS S89°51'23"E FROM THE NORTHWEST CORNER OF SAID SECTION 9 (2 1/2" AULM. CAP PLS 17664) TO THE N 1/2 CORNER OF SAID SECTION 9 (3 1/2" AULM. CAP PLS 10377)

PREPARED BY:

SEAL

PRELIMINARY
 THIS DRAWING HAS NOT BEEN APPROVED BY GOVERNING AGENCIES AND IS SUBJECT TO CHANGE

FOR AND ON BEHALF OF
 MATRIX DESIGN GROUP, INC.
 PROJECT No. 23.886.078

DESIGNED BY: NMS
 DRAWN BY: KGI
 CHECKED BY: NMS

SCALE: HORIZ N/A
 VERT. N/A

DATE ISSUED: MAY 2023
 SHEET 7 OF 8

DRAWING No. **ECN03**

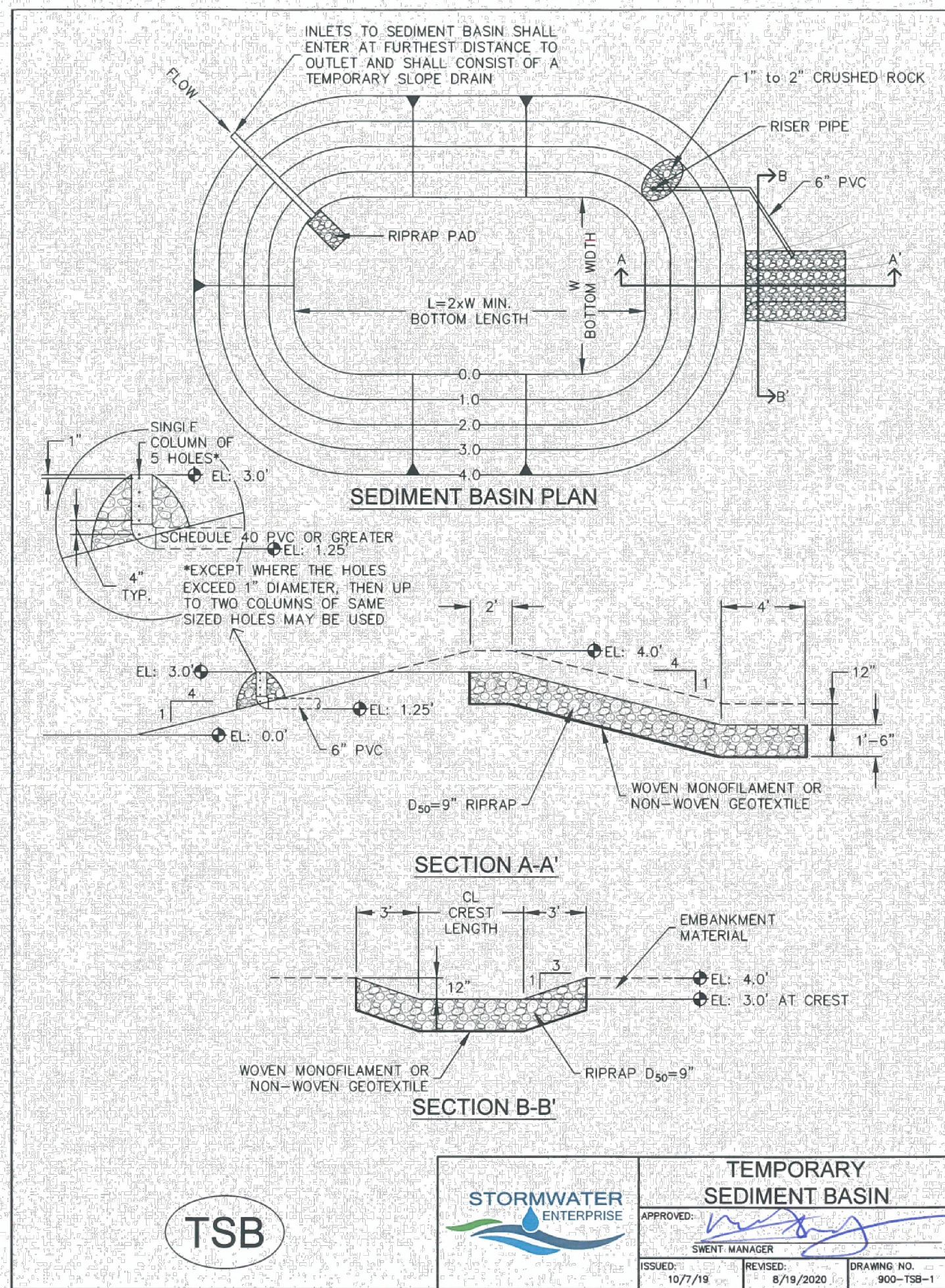
TRAILS AT ASPEN RIDGE - STOCKPILE

CONSTRUCTION DRAWINGS
 GRADING AND EROSION CONTROL PLANS

EROSION CONTROL DETAILS



Know what's below.
Call before you dig.



TSB

TEMPORARY SEDIMENT BASIN

STORMWATER ENTERPRISE APPROVED: *[Signature]*

ISSUED: 10/7/19 REVISED: 8/19/2020 DRAWING NO: 900-TSB-1

TABLE SB-1, SIZING INFORMATION FOR STANDARD SEDIMENT BASIN

UPSTREAM DRAINAGE AREA (ROUNDED TO NEAREST ACRE), (AC)	Basin Bottom Width (W), (FT)	Spillway Crest Length (CL), (FT)	Hole Diameter (HD), (IN)
1	12 $\frac{1}{2}$	2	3 $\frac{1}{2}$
2	21	3	4 $\frac{1}{2}$
3	28	5	6
4	33 $\frac{1}{2}$	6	8
5	38 $\frac{1}{2}$	8	10
6	43	9	12
7	47 $\frac{1}{2}$	11	14
8	51	12	16
9	55	13	18
10	58 $\frac{1}{2}$	15	20
11	61	16	22
12	64	18	24
13	67 $\frac{1}{2}$	19	26
14	70 $\frac{1}{2}$	21	28
15	73 $\frac{1}{2}$	22	30

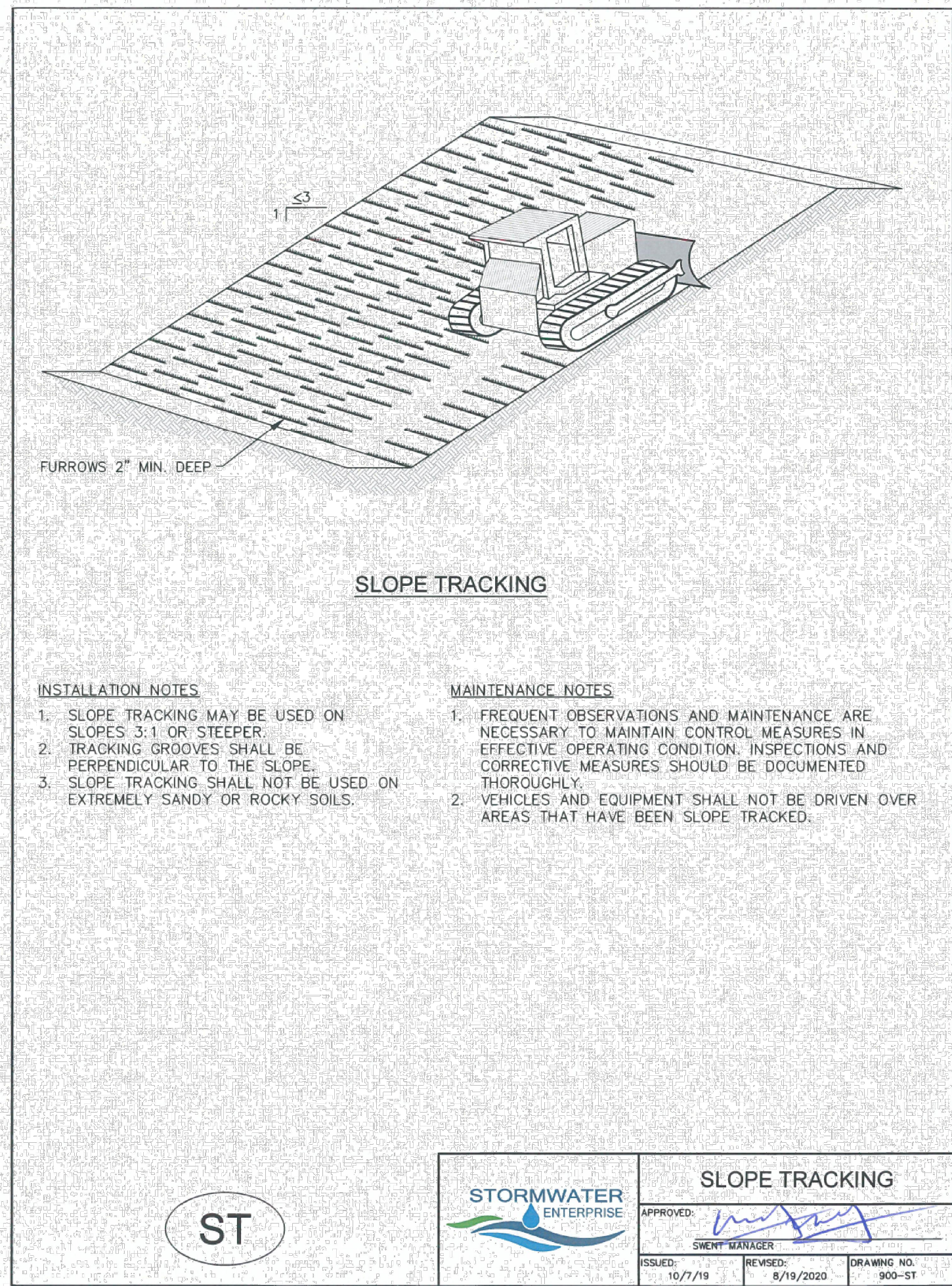
- INSTALLATION NOTES**
- FOR STANDARD BASIN, BOTTOM DIMENSION MAY BE MODIFIED AS LONG AS BOTTOM AREA IS NOT REDUCED.
 - EMBANKMENT MATERIAL SHALL CONSIST OF SOIL FREE OF DEBRIS, ORGANIC MATERIAL, AND ROCKS OR CONCRETE GREATER THAN 3 INCHES, AND SHALL HAVE A MINIMUM OF 15 PERCENT BY WEIGHT PASSING THE NO. 200 SIEVE.
 - EMBANKMENT MATERIAL SHALL BE COMPACTED TO AT LEAST 95 PERCENT OF MAXIMUM DENSITY IN ACCORDANCE WITH ASTM D-698.
 - PIPE SCHEDULE 40 OR GREATER SHALL BE USED.
 - THE DETAILS SHOWN ON THESE SHEETS PERTAIN TO STANDARD SEDIMENT BASIN(S) FOR DRAINAGE AREAS LESS THAN 15 ACRES. SEE CONSTRUCTION DRAWINGS FOR EMBANKMENT, STORAGE VOLUME, SPILLWAY, OUTLET, AND OUTLET PROTECTION DETAILS FOR ANY SEDIMENT BASIN(S) THAT HAVE BEEN INDIVIDUALLY DESIGNED FOR DRAINAGE AREAS LARGER THAN 15 ACRES. DESIGN CALCULATIONS MUST BE APPROVED PRIOR TO IMPLEMENTATION.
- MAINTENANCE NOTES**
- FREQUENT OBSERVATIONS AND MAINTENANCE ARE NECESSARY TO MAINTAIN CONTROL MEASURES IN EFFECTIVE OPERATING CONDITION. INSPECTIONS AND CORRECTIVE MEASURES SHOULD BE DOCUMENTED THOROUGHLY.
 - SEDIMENT ACCUMULATED IN BASIN SHALL BE REMOVED AS NEEDED TO MAINTAIN CONTROL MEASURE EFFECTIVENESS, TYPICALLY WHEN SEDIMENT DEPTH REACHES ONE FOOT (I.E. TWO FEET BELOW SPILLWAY CREST).
 - SEDIMENT BASINS ARE TO REMAIN IN PLACE UNTIL THE UPSTREAM DISTURBED AREA IS PERMANENTLY STABILIZED.
 - PERMANENTLY STABILIZE AREA AFTER SEDIMENT BASIN REMOVAL.

TSB

TEMPORARY SEDIMENT BASIN

STORMWATER ENTERPRISE APPROVED: *[Signature]*

ISSUED: 10/7/19 REVISED: 8/19/2020 DRAWING NO: 900-TSB-2



ST

SLOPE TRACKING

STORMWATER ENTERPRISE APPROVED: *[Signature]*

ISSUED: 10/7/19 REVISED: 8/19/2020 DRAWING NO: 900-ST

EPC'S EDARP FILE NUMBER: CDR2312

No.	DATE	DESCRIPTION	BY

COMPUTER FILE MANAGEMENT

FILE NAME: S:\20.886.028 Trails PUDSP Major Amend\100 Dwg\104 Plan Sets\Construction Plans\GEC Plan\haul_route ECN01.dwg
 CTB FILE: ---
 PLOT DATE: June 20, 2023 11:05:42 AM
 THIS DRAWING IS CURRENT AS OF PLOT DATE AND MAY BE SUBJECT TO CHANGE.

SHEET KEY

BENCHMARK
 COLORADO SPRINGS UTILITIES (FIMS) MONUMENT F206
 A BERNTSEN TOP SECURITY MONUMENT SYSTEM WITH A 3.5-INCH DIAMETER ALUMINUM CAP IN A ROAD BOX, LOCATED ON THE NORTHWEST CORNER OF FONTAINE BOULEVARD AND POWERS BOULEVARD.
 ELEVATION - 5897.89' U.S. SURVEY FT

BASIS OF BEARING
 BEARINGS ARE BASED ON THE NORTH LINE OF THE NORTHWEST QUARTER OF SECTION 9, TOWNSHIP 15 SOUTH, RANGE 65 WEST OF THE 6TH P.M. SAID LINE BEARS S89°51'23"E FROM THE NORTHWEST CORNER OF SAID SECTION 9 (2 1/2" AULM. CAP PLS 17664) TO THE N 1/2 CORNER OF SAID SECTION 9 (3 1/2" AULM. CAP PLS 10377)

SEAL

PRELIMINARY
 THIS DRAWING HAS NOT BEEN APPROVED BY GOVERNING AGENCIES AND IS SUBJECT TO CHANGE

FOR AND ON BEHALF OF
 MATRIX DESIGN GROUP, INC.
 PROJECT No. 23.886.078

TRAILS AT ASPEN RIDGE - STOCKPILE

CONSTRUCTION DRAWINGS
 GRADING AND EROSION CONTROL PLANS

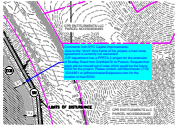
EROSION CONTROL DETAILS

DESIGNED BY:	NMS	SCALE:	DATE ISSUED:	MAY 2023
DRAWN BY:	KGI	HORIZ	N/A	
CHECKED BY:	NMS	VERT.	N/A	
SHEET:			8 OF 8	

DRAWING No: ECN04

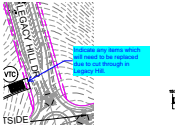
V2_GEC Plan.pdf Markup Summary

Callout (2)



Subject: Callout
Page Label: [2] 2 GN01
Author: CDurham
Date: 7/18/2023 2:49:36 PM
Status:
Color: ■
Layer:
Space:

Comments from EPC Capital Improvements:
-Due to the "short" time frame of the project, a haul route agreement is currently not warranted.
-CIP department has a PPRTA 3 project for the extension of Bradley Road from Goldfield Dr to Powers. Request that stock pile be moved out of area which would be the future ROW for the project. Please contact Jeff Manchester (719) 520-6851 or jeffmanchester@elpasoco.com for the location of that ROW.



Subject: Callout
Page Label: [2] 2 GN01
Author: CDurham
Date: 7/18/2023 2:52:43 PM
Status:
Color: ■
Layer:
Space:

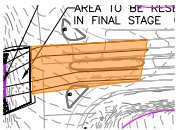
Indicate any items which will need to be replaced due to cut through in Legacy Hill.

Image (1)



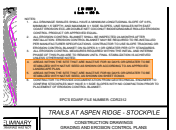
Subject: Image
Page Label: [2] 2 GN01
Author: Glenn Reese - EPC Stormwater
Date: 7/13/2023 9:20:49 AM
Status:
Color: ■
Layer:
Space:

Polygon (1)



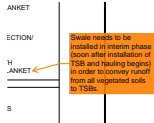
Subject: Polygon
Page Label: [2] 2 GN01
Author: Glenn Reese - EPC Stormwater
Date: 7/18/2023 8:37:09 AM
Status:
Color: ■
Layer:
Space:

SW - Rectangle (1)



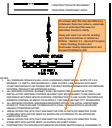
Subject: SW - Rectangle
Page Label: [2] 2 GN01
Author: Glenn Reese - EPC Stormwater
Date: 7/13/2023 9:17:09 AM
Status:
Color: ■
Layer:
Space:

SW - Textbox with Arrow (5)



Subject: SW - Textbox with Arrow
Page Label: [2] 2 GN01
Author: Glenn Reese - EPC Stormwater
Date: 7/13/2023 9:17:09 AM
Status:
Color: ■
Layer:
Space:

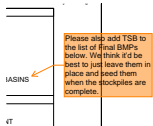
Swale needs to be installed in interim phase (soon after installation of TSB and hauling begins) in order to convey runoff from all vegetated soils to TSBs.



Subject: SW - Textbox with Arrow
Page Label: [2] 2 GN01
Author: Glenn Reese - EPC Stormwater
Date: 7/13/2023 9:20:57 AM
Status:
Color: ■
Layer:
Space:

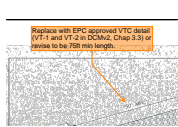
It's unclear what the intended difference is between these two notes is, especially since a Landscape Plan was not submitted. Revise to clarify.

Likely just need one note for seeding req's that summarizes or references DCMv2 - Section 3.2 - General Principles – Basic Grading, Erosion and Stormwater Quality Requirements and General Prohibitions #16:



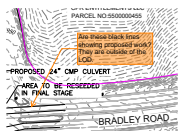
Subject: SW - Textbox with Arrow
Page Label: [2] 2 GN01
Author: Glenn Reese - EPC Stormwater
Date: 7/13/2023 9:17:09 AM
Status:
Color: ■
Layer:
Space:

Please also add TSB to the list of Final BMPs below. We think it'd be best to just leave them in place and seed them when the stockpiles are complete.



Subject: SW - Textbox with Arrow
Page Label: [6] 6 ECN02
Author: Glenn Reese - EPC Stormwater
Date: 7/13/2023 9:17:19 AM
Status:
Color: ■
Layer:
Space:

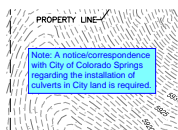
Replace with EPC approved VTC detail (VT-1 and VT-2 in DCMv2, Chap 3.3) or revise to be 75ft min length.



Subject: SW - Textbox with Arrow
Page Label: [2] 2 GN01
Author: Glenn Reese - EPC Stormwater
Date: 7/18/2023 8:37:26 AM
Status:
Color: ■
Layer:
Space:

Are these black lines showing proposed work? They are outside of the LOD.

Text Box (4)



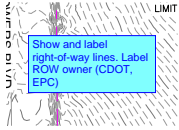
Subject: Text Box
Page Label: [2] 2 GN01
Author: Carlos
Date: 7/18/2023 8:16:09 AM
Status:
Color: ■
Layer:
Space:

Note: A notice/correspondence with City of Colorado Springs regarding the installation of culverts in City land is required.

Label roads

Subject: Text Box
Page Label: [4] 4 HR01
Author: Carlos
Date: 7/18/2023 8:19:55 AM
Status:
Color: ■
Layer:
Space:

Label roads



Subject: Text Box
Page Label: [2] 2 GN01
Author: Carlos
Date: 7/18/2023 8:36:19 AM
Status:
Color: ■
Layer:
Space:

Show and label right-of-way lines. Label ROW owner (CDOT, EPC)

Show and label right-of-way lines. Label ROW owner (CDOT, EPC)

Subject: Text Box
Page Label: [4] 4 HR01
Author: Carlos
Date: 7/18/2023 8:29:36 AM
Status:
Color: ■
Layer:
Space:

Show and label right-of-way lines. Label ROW owner (CDOT, EPC)