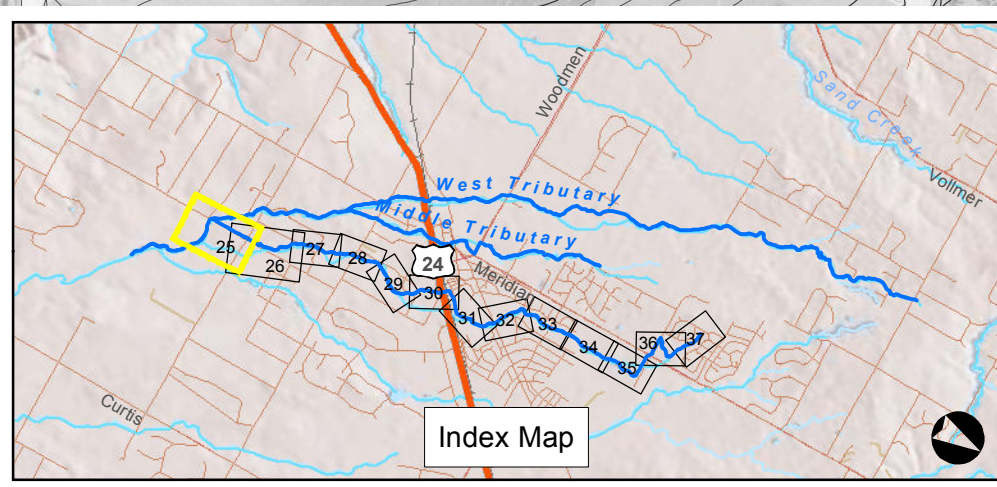
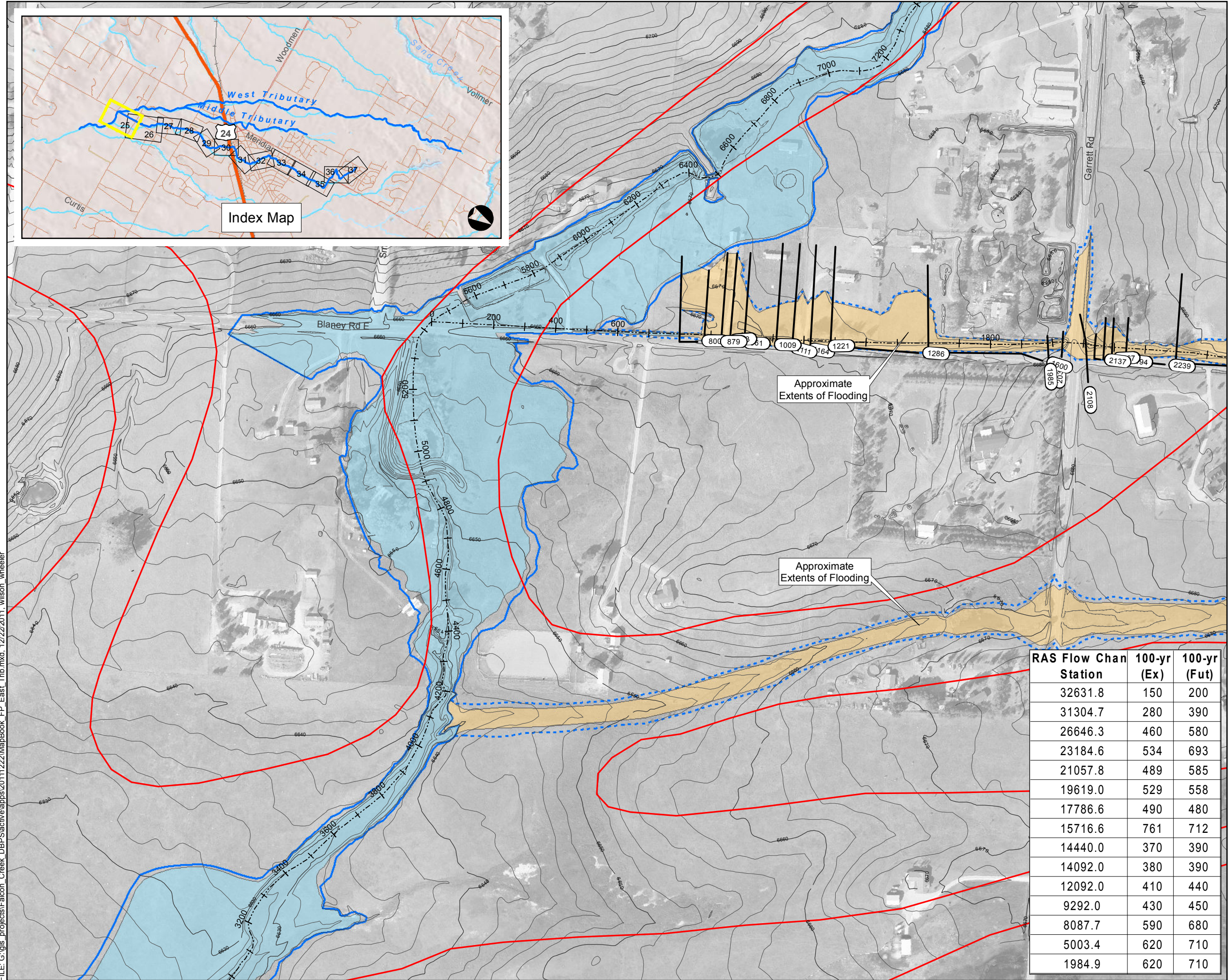


# Sheet 4-25

## East Tributary Floodplain Falcon DBPS El Paso County, CO



Index Map

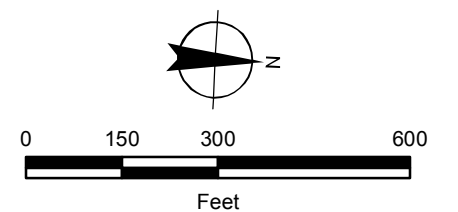


### Legend

- Approximate 100-yr Floodplain Existing
- Approximate 100-yr Floodplain Existing (Based on Assumed Split Flow Condition)
- Approximate 100-yr Floodplain Future
- Approximate 100-yr Floodplain Future (Based on Assumed Split Flow Condition)
- Shallow Flooding
- HEC-RAS Centerline
- XSCutLines (East Trib)
- FEMA Regulatory Floodplain (Effective as of 1999)\*
- Study Limit

\*Letters of Map Change completed after 1999 are not shown

RAS Flow Chan Station	100-yr (Ex)	100-yr (Fut)
32631.8	150	200
31304.7	280	390
26646.3	460	580
23184.6	534	693
21057.8	489	585
19619.0	529	558
17786.6	490	480
15716.6	761	712
14440.0	370	390
14092.0	380	390
12092.0	410	440
9292.0	430	450
8087.7	590	680
5003.4	620	710
1984.9	620	710



FILE: G:\gis\_projects\Falcon\_Creek\_DBPS\active\apps\20111222\MapBook\_FP\_East\_Trib.mxd, 12/22/2011, wilson\_wheeler

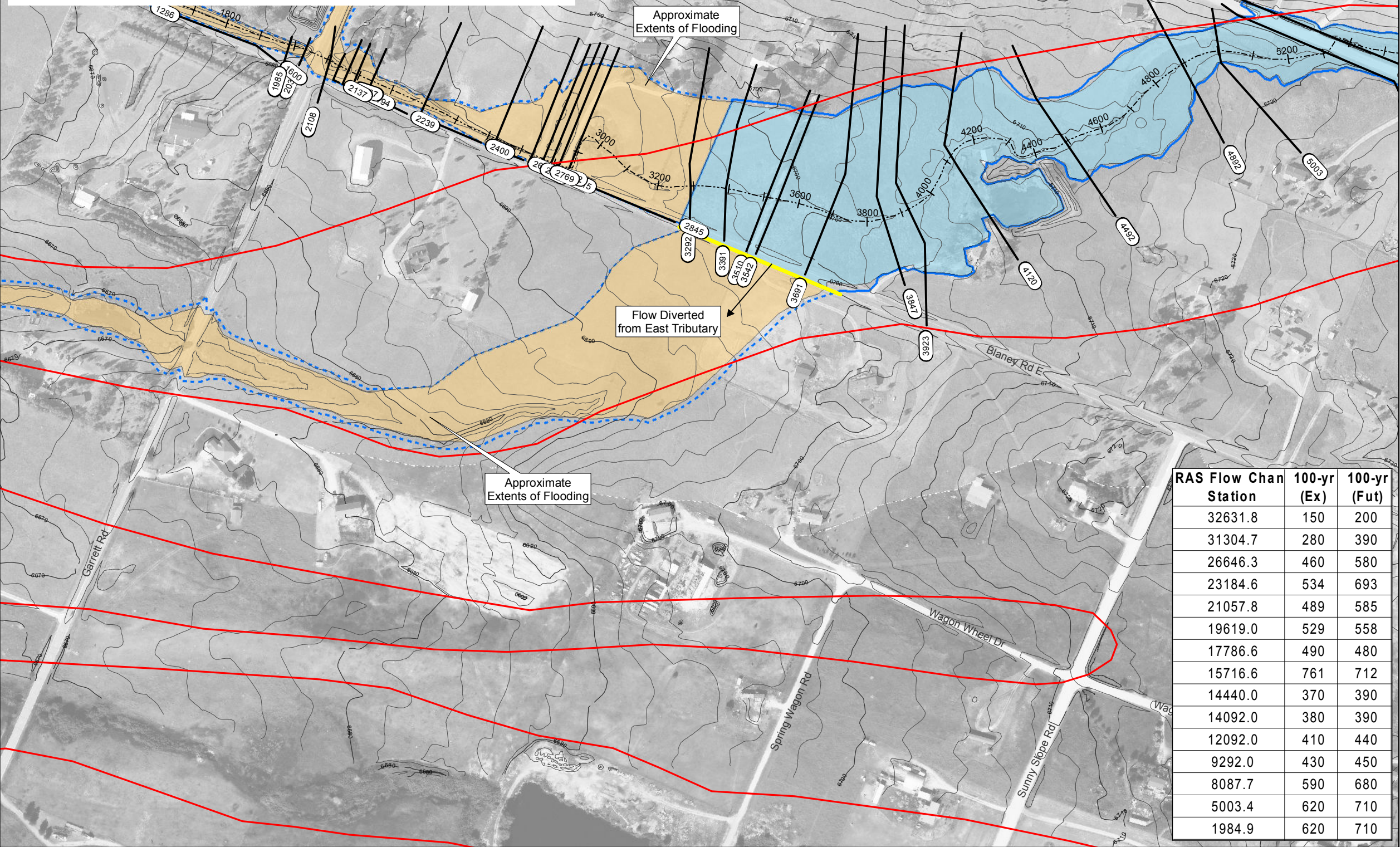
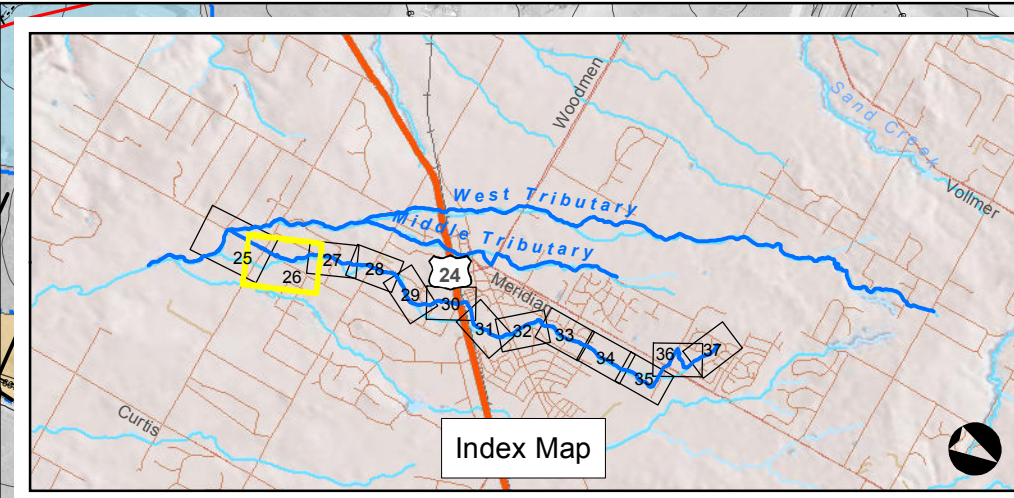
# Sheet 4-26

## East Tributary Floodplain Falcon DBPS El Paso County, CO

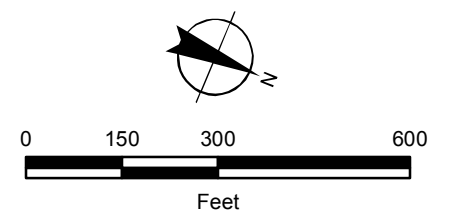
### Legend

- Approximate 100-yr Floodplain Existing
- Approximate 100-yr Floodplain Existing (Based on Assumed Split Flow Condition)
- Approximate 100-yr Floodplain Future
- Approximate 100-yr Floodplain Future (Based on Assumed Split Flow Condition)
- Shallow Flooding
- HEC-RAS Centerline
- XSCutLines (East Trib)
- FEMA Regulatory Floodplain (Effective as of 1999)\*
- Study Limit

\*Letters of Map Change completed after 1999 are not shown

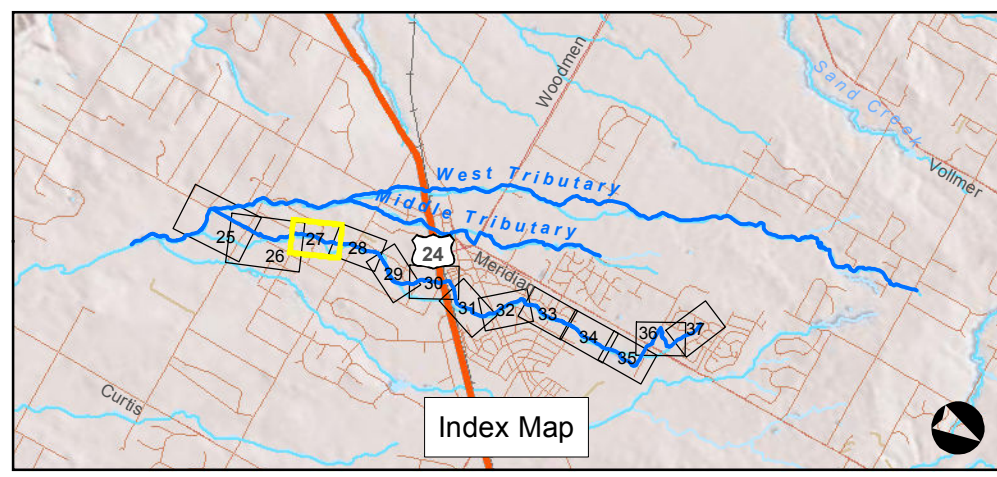


RAS Flow Chan Station	100-yr (Ex)	100-yr (Fut)
32631.8	150	200
31304.7	280	390
26646.3	460	580
23184.6	534	693
21057.8	489	585
19619.0	529	558
17786.6	490	480
15716.6	761	712
14440.0	370	390
14092.0	380	390
12092.0	410	440
9292.0	430	450
8087.7	590	680
5003.4	620	710
1984.9	620	710

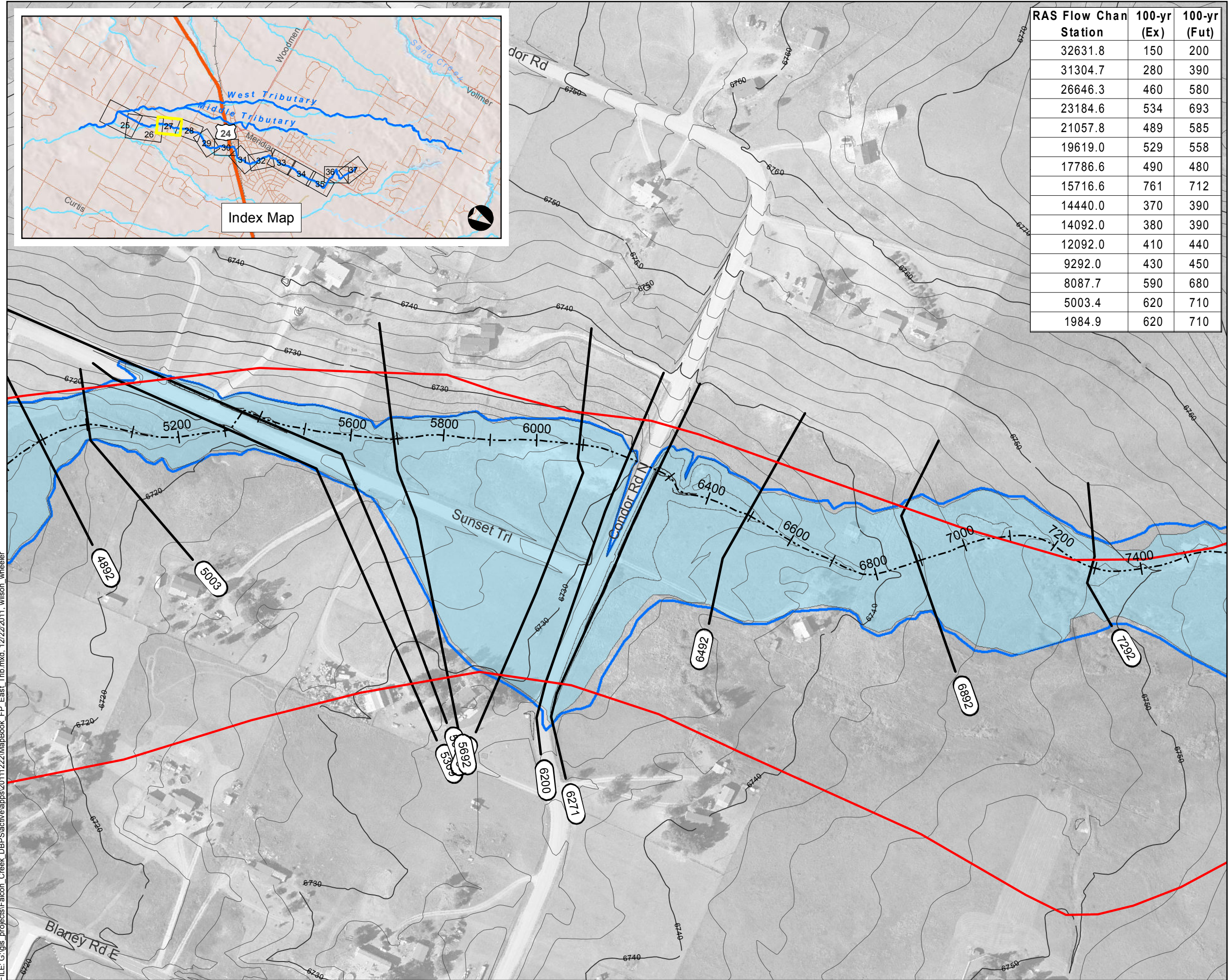


FILE: G:\gis\_projects\Falcon\_Creek\_DBPS\active\apps\20111222\MapBook\_FP\_East\_Trib.mxd, 12/22/2011, wilson\_wheeler

FILE: G:\gis\_projects\Falcon\_Creek\_DBPS\active\apps\20111222\MapBook\_FP\_East\_Trib.mxd, 12/22/2011, wilson\_wheeler



RAS Flow Chan Station	100-yr (Ex)	100-yr (Fut)
32631.8	150	200
31304.7	280	390
26646.3	460	580
23184.6	534	693
21057.8	489	585
19619.0	529	558
17786.6	490	480
15716.6	761	712
14440.0	370	390
14092.0	380	390
12092.0	410	440
9292.0	430	450
8087.7	590	680
5003.4	620	710
1984.9	620	710

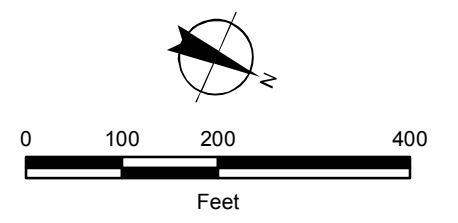


# Sheet 4-27

## East Tributary Floodplain Falcon DBPS El Paso County, CO

- Legend**
- Approximate 100-yr Floodplain Existing
  - Approximate 100-yr Floodplain Existing (Based on Assumed Split Flow Condition)
  - Approximate 100-yr Floodplain Future
  - Approximate 100-yr Floodplain Future (Based on Assumed Split Flow Condition)
  - Shallow Flooding
  - HEC-RAS Centerline
  - XSCutLines (East Trib)
  - FEMA Regulatory Floodplain (Effective as of 1999)\*
  - Study Limit

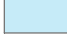








\*Letters of Map Change completed after 1999 are not shown



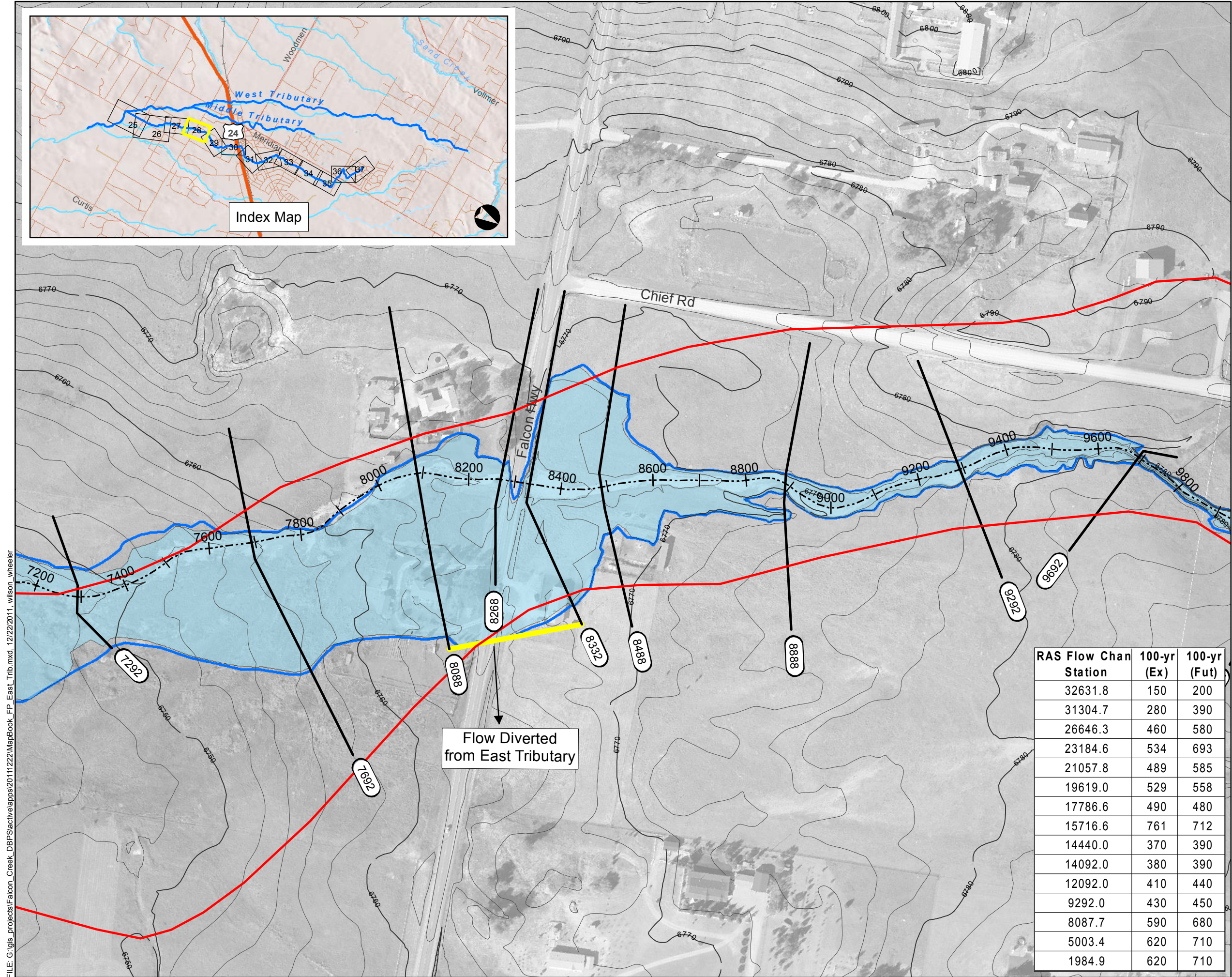
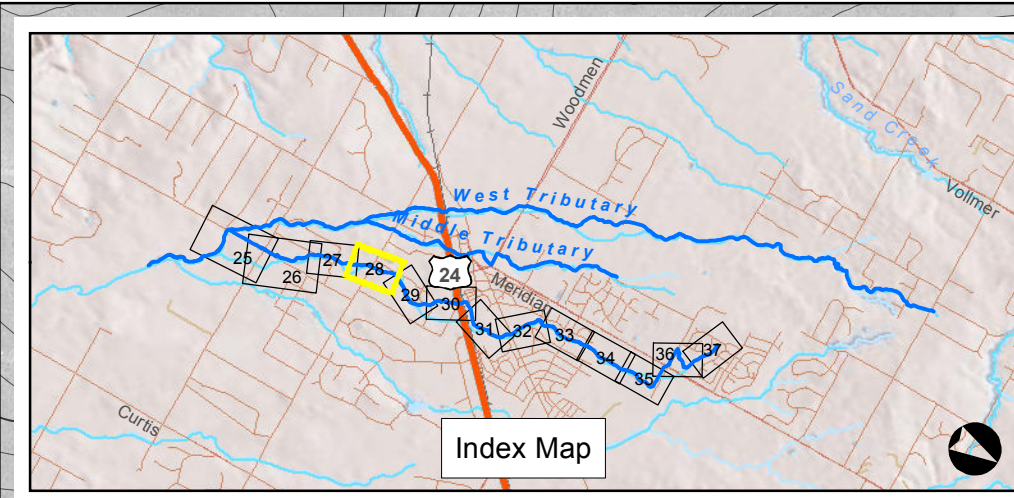
# Sheet 4-28

## East Tributary Floodplain Falcon DBPS El Paso County, CO

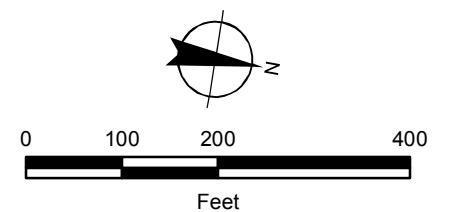
### Legend

-  Approximate 100-yr Floodplain Existing
-  Approximate 100-yr Floodplain Existing (Based on Assumed Split Flow Condition)
-  Approximate 100-yr Floodplain Future
-  Approximate 100-yr Floodplain Future (Based on Assumed Split Flow Condition)
-  Shallow Flooding
-  HEC-RAS Centerline
-  XSCutLines (East Trib)
-  FEMA Regulatory Floodplain (Effective as of 1999)\*
-  Study Limit

\*Letters of Map Change completed after 1999 are not shown



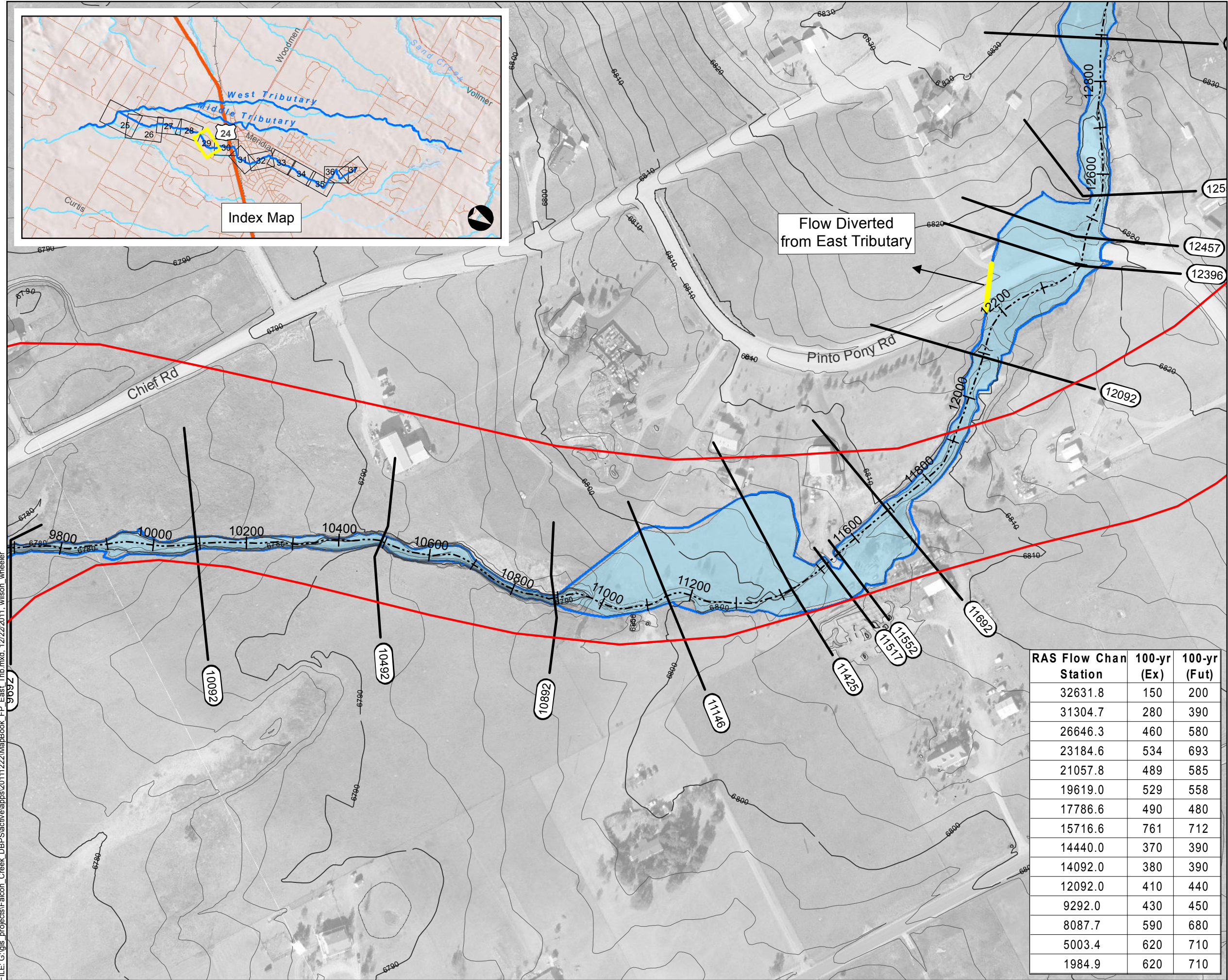
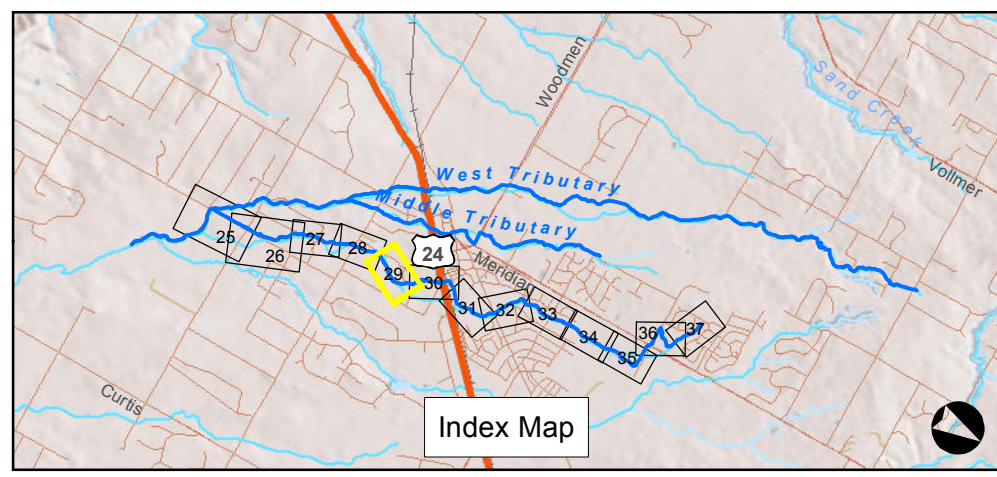
RAS Flow Chan Station	100-yr (Ex)	100-yr (Fut)
32631.8	150	200
31304.7	280	390
26646.3	460	580
23184.6	534	693
21057.8	489	585
19619.0	529	558
17786.6	490	480
15716.6	761	712
14440.0	370	390
14092.0	380	390
12092.0	410	440
9292.0	430	450
8087.7	590	680
5003.4	620	710
1984.9	620	710



FILE: G:\gis\_projects\Falcon\_Creek\_DBPS\active\apps\20111222\MapBook\_FP\_East\_Trib.mxd, 12/22/2011, wison\_wheeler

# Sheet 4-29

## East Tributary Floodplain Falcon DBPS El Paso County, CO

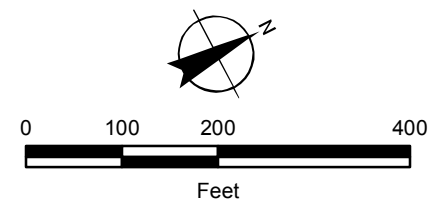


### Legend

- Approximate 100-yr Floodplain Existing
- Approximate 100-yr Floodplain Existing (Based on Assumed Split Flow Condition)
- Approximate 100-yr Floodplain Future
- Approximate 100-yr Floodplain Future (Based on Assumed Split Flow Condition)
- Shallow Flooding
- HEC-RAS Centerline
- XSCutLines (East Trib)
- FEMA Regulatory Floodplain (Effective as of 1999)\*
- Study Limit

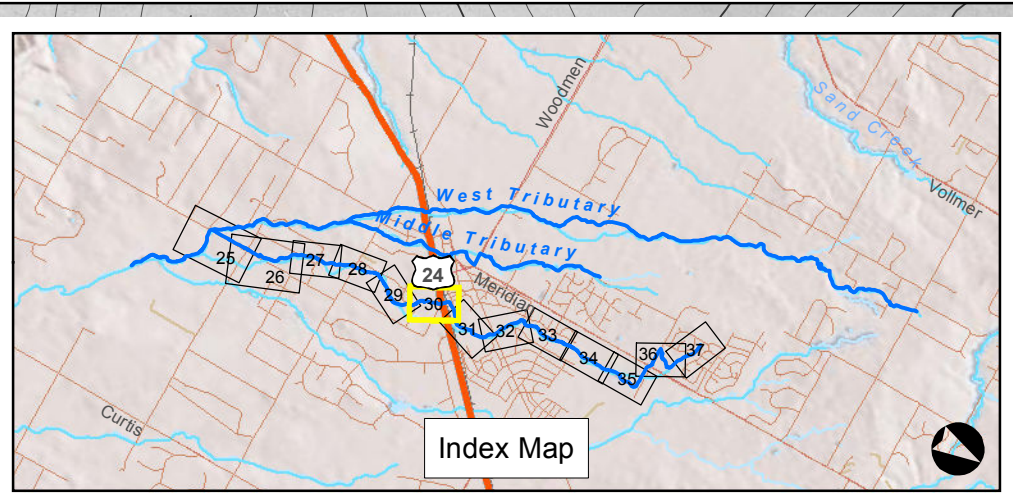
\*Letters of Map Change completed after 1999 are not shown

RAS Flow Chan Station	100-yr (Ex)	100-yr (Fut)
32631.8	150	200
31304.7	280	390
26646.3	460	580
23184.6	534	693
21057.8	489	585
19619.0	529	558
17786.6	490	480
15716.6	761	712
14440.0	370	390
14092.0	380	390
12092.0	410	440
9292.0	430	450
8087.7	590	680
5003.4	620	710
1984.9	620	710



FILE: G:\gis\_projects\Falcon\_Creek\_DBPS\active\apps\20111222\MapBook\_FP\_East\_Trib.mxd, 12/22/2011, wilson\_wheeler

FILE: G:\gis\_projects\Falcon\_Creek\_DBPS\active\apps\20111222\MapBook\_FP\_East\_Trib.mxd, 12/22/2011, wilson\_wheeler



RAS Flow Chan Station	100-yr (Ex)	100-yr (Fut)
32631.8	150	200
31304.7	280	390
26646.3	460	580
23184.6	534	693
21057.8	489	585
19619.0	529	558
17786.6	490	480
15716.6	761	712
14440.0	370	390
14092.0	380	390
12092.0	410	440
9292.0	430	450
8087.7	590	680
5003.4	620	710
1984.9	620	710

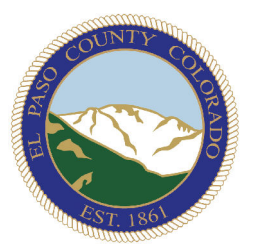
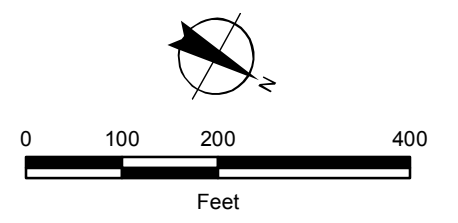


# Sheet 4-30

## East Tributary Floodplain Falcon DBPS El Paso County, CO

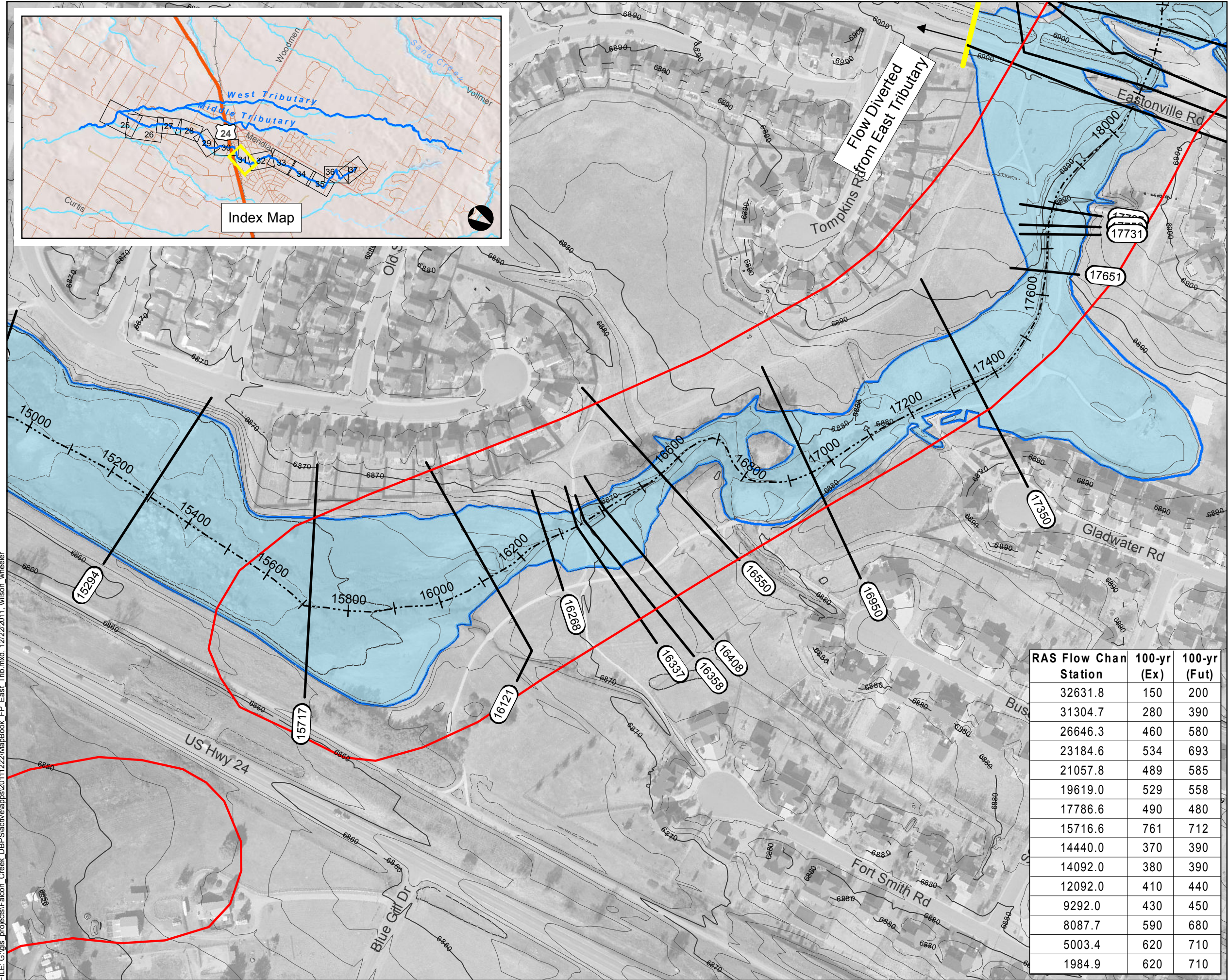
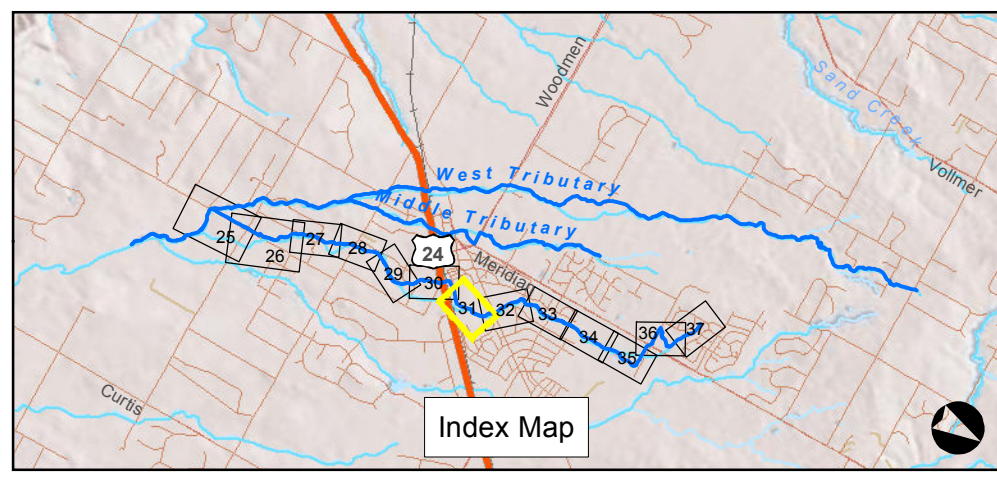
- Legend**
- Approximate 100-yr Floodplain Existing
  - Approximate 100-yr Floodplain Existing (Based on Assumed Split Flow Condition)
  - Approximate 100-yr Floodplain Future
  - Approximate 100-yr Floodplain Future (Based on Assumed Split Flow Condition)
  - Shallow Flooding
  - HEC-RAS Centerline
  - XSCutLines (East Trib)
  - FEMA Regulatory Floodplain (Effective as of 1999)\*
  - Study Limit

\*Letters of Map Change completed after 1999 are not shown



# Sheet 4-31

## East Tributary Floodplain Falcon DBPS El Paso County, CO

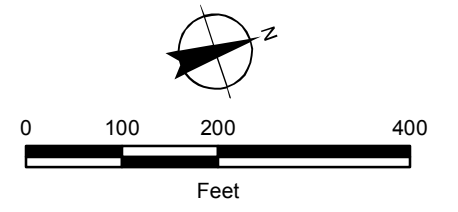


### Legend

- Approximate 100-yr Floodplain Existing
- Approximate 100-yr Floodplain Existing (Based on Assumed Split Flow Condition)
- Approximate 100-yr Floodplain Future
- Approximate 100-yr Floodplain Future (Based on Assumed Split Flow Condition)
- Shallow Flooding
- HEC-RAS Centerline
- XSCutLines (East Trib)
- FEMA Regulatory Floodplain (Effective as of 1999)\*
- Study Limit

\*Letters of Map Change completed after 1999 are not shown

RAS Flow Chan Station	100-yr (Ex)	100-yr (Fut)
32631.8	150	200
31304.7	280	390
26646.3	460	580
23184.6	534	693
21057.8	489	585
19619.0	529	558
17786.6	490	480
15716.6	761	712
14440.0	370	390
14092.0	380	390
12092.0	410	440
9292.0	430	450
8087.7	590	680
5003.4	620	710
1984.9	620	710



FILE: G:\gis\_projects\Falcon\_Creek\_DBPS\active\apps\20111222\MapBook\_FP\_East\_Trib.mxd, 12/22/2011, wilson\_wheeler

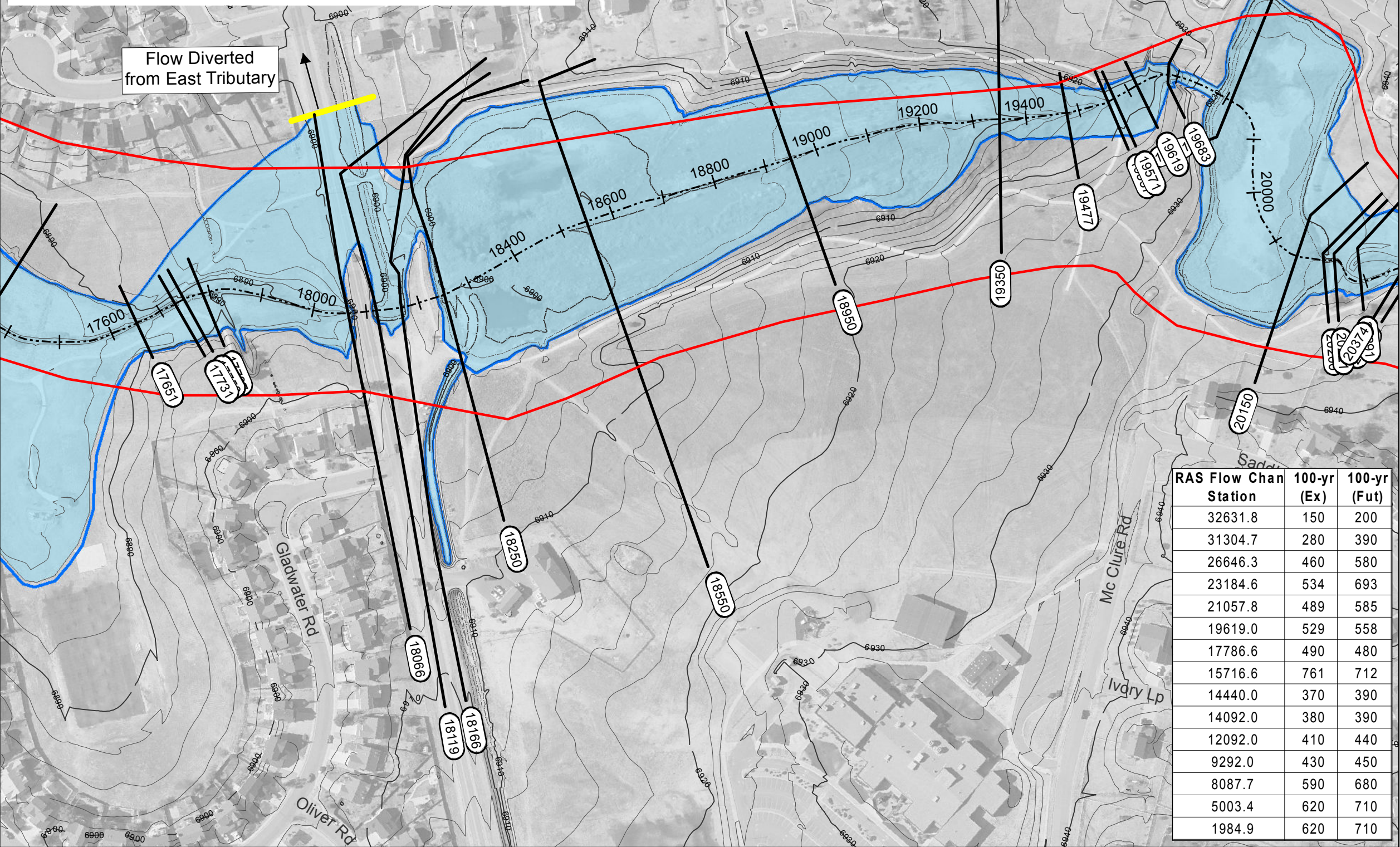
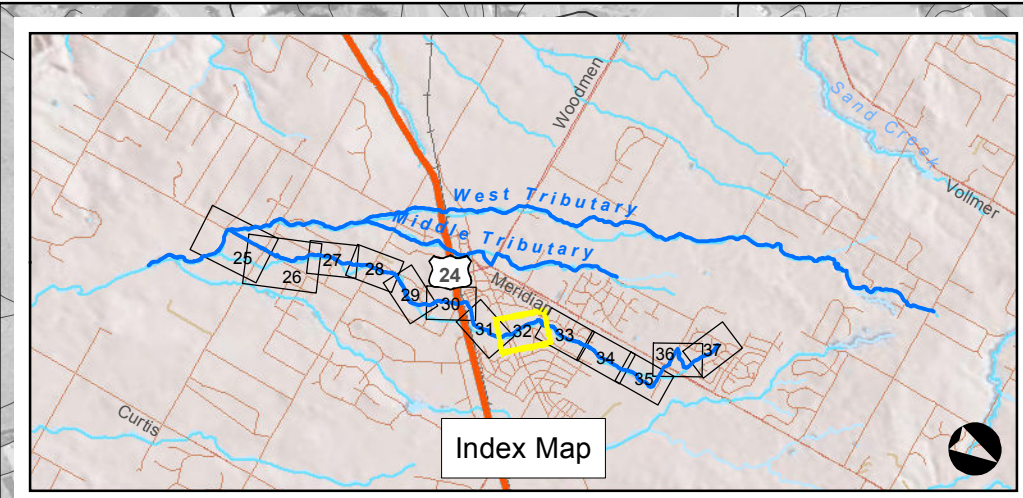
# Sheet 4-32

## East Tributary Floodplain Falcon DBPS El Paso County, CO

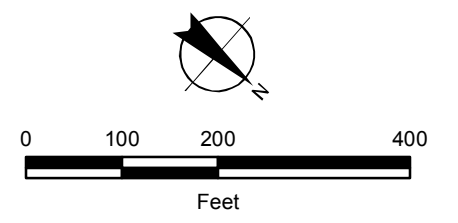
### Legend

- Approximate 100-yr Floodplain Existing
- Approximate 100-yr Floodplain Existing (Based on Assumed Split Flow Condition)
- Approximate 100-yr Floodplain Future
- Approximate 100-yr Floodplain Future (Based on Assumed Split Flow Condition)
- Shallow Flooding
- HEC-RAS Centerline
- XSCutLines (East Trib)
- FEMA Regulatory Floodplain (Effective as of 1999)\*
- Study Limit

\*Letters of Map Change completed after 1999 are not shown



RAS Flow Chan Station	100-yr (Ex)	100-yr (Fut)
32631.8	150	200
31304.7	280	390
26646.3	460	580
23184.6	534	693
21057.8	489	585
19619.0	529	558
17786.6	490	480
15716.6	761	712
14440.0	370	390
14092.0	380	390
12092.0	410	440
9292.0	430	450
8087.7	590	680
5003.4	620	710
1984.9	620	710

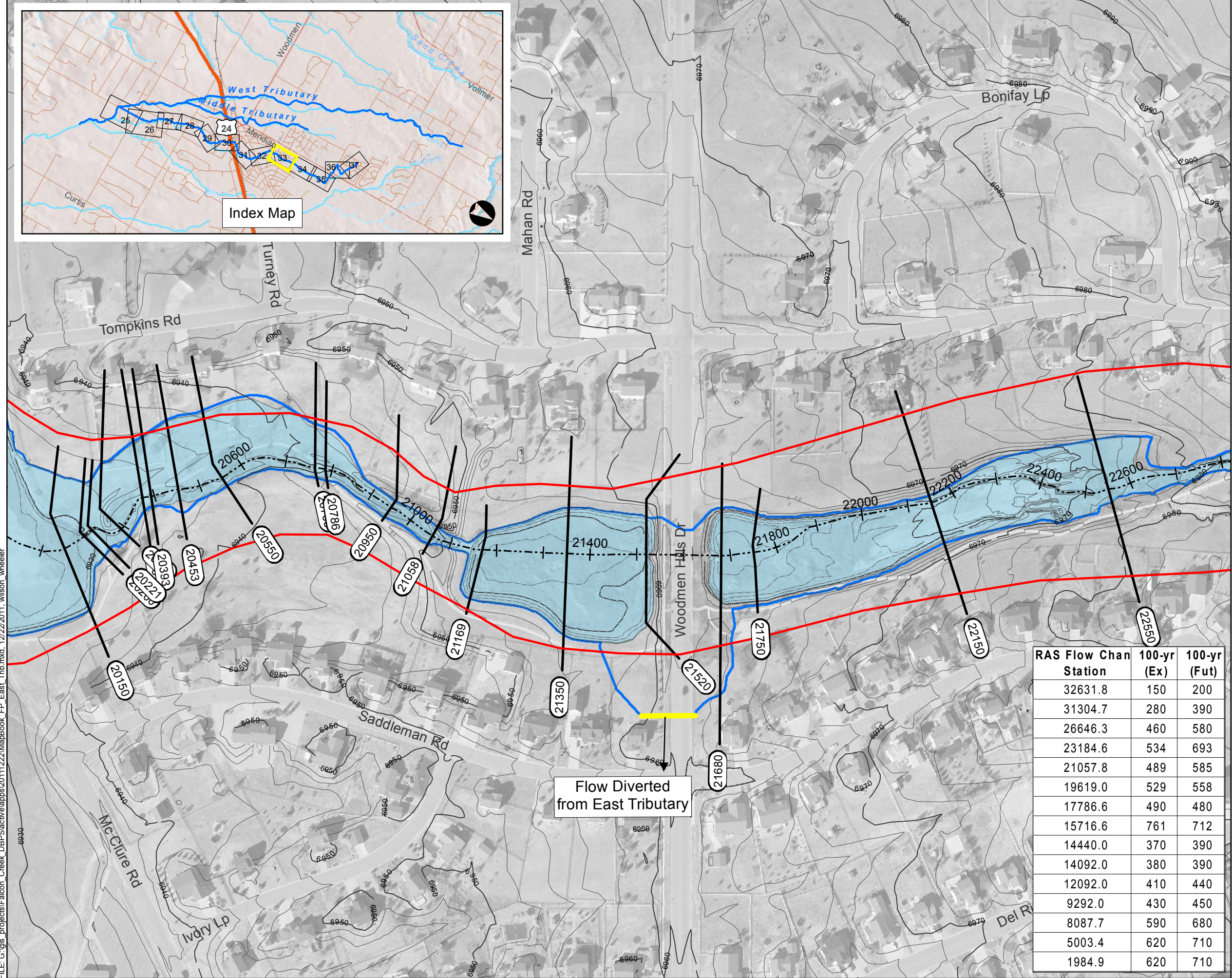
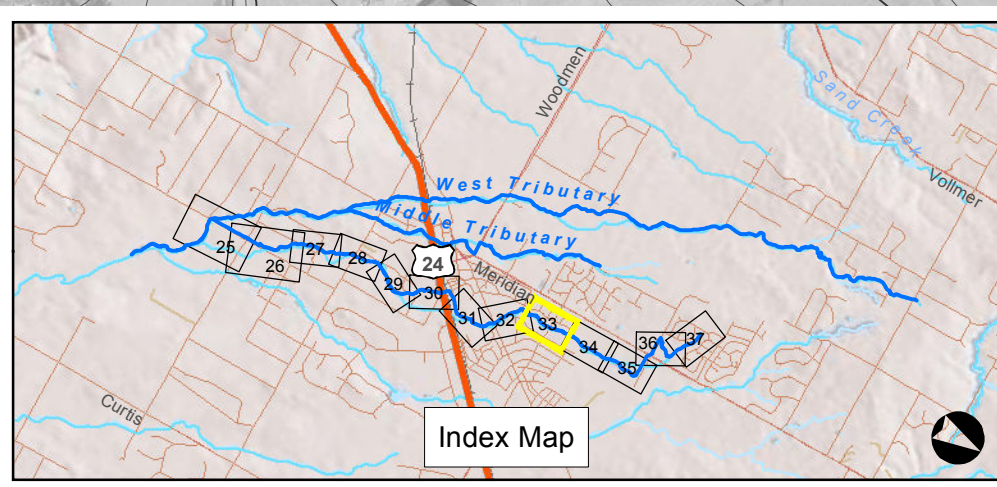


FILE: G:\gis\_projects\Falcon\_Creek\_DBPS\active\apps\20111222\MapBook\_FP\_East\_Trib.mxd, 12/22/2011, wilson\_wheeler



# Sheet 4-33

## East Tributary Floodplain Falcon DBPS El Paso County, CO

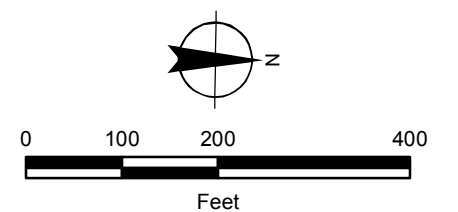


### Legend

- Approximate 100-yr Floodplain Existing
- Approximate 100-yr Floodplain Existing (Based on Assumed Split Flow Condition)
- Approximate 100-yr Floodplain Future
- Approximate 100-yr Floodplain Future (Based on Assumed Split Flow Condition)
- Shallow Flooding
- HEC-RAS Centerline
- XSCutLines (East Trib)
- FEMA Regulatory Floodplain (Effective as of 1999)\*
- Study Limit

\*Letters of Map Change completed after 1999 are not shown

RAS Flow Chan Station	100-yr (Ex)	100-yr (Fut)
32631.8	150	200
31304.7	280	390
26646.3	460	580
23184.6	534	693
21057.8	489	585
19619.0	529	558
17786.6	490	480
15716.6	761	712
14440.0	370	390
14092.0	380	390
12092.0	410	440
9292.0	430	450
8087.7	590	680
5003.4	620	710
1984.9	620	710

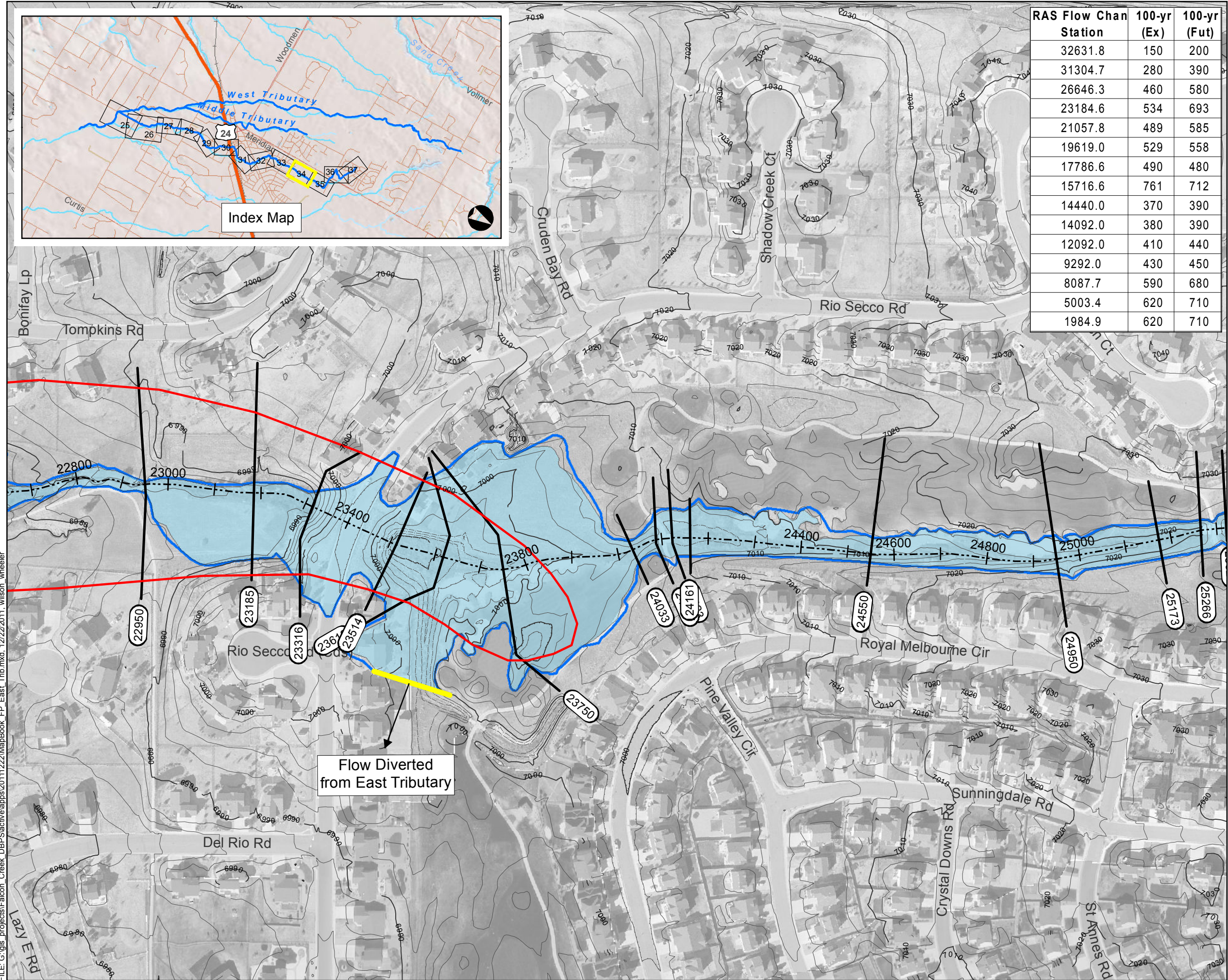
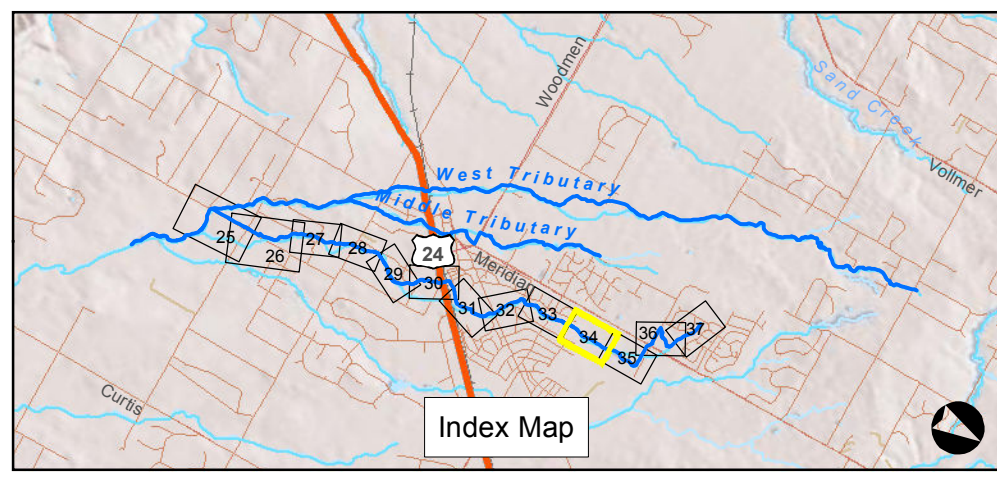


FILE: G:\gis\_projects\Falcon\_Creek\_DBPS\active\apps\20111222\MapBook\_FP\_East\_Trib.mxd, 12/22/2011, wilson\_wheeler

# Sheet 4-34

## East Tributary Floodplain Falcon DBPS El Paso County, CO

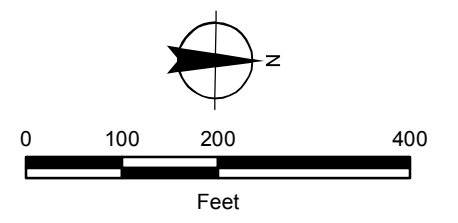
RAS Flow Chan Station	100-yr (Ex)	100-yr (Fut)
32631.8	150	200
31304.7	280	390
26646.3	460	580
23184.6	534	693
21057.8	489	585
19619.0	529	558
17786.6	490	480
15716.6	761	712
14440.0	370	390
14092.0	380	390
12092.0	410	440
9292.0	430	450
8087.7	590	680
5003.4	620	710
1984.9	620	710



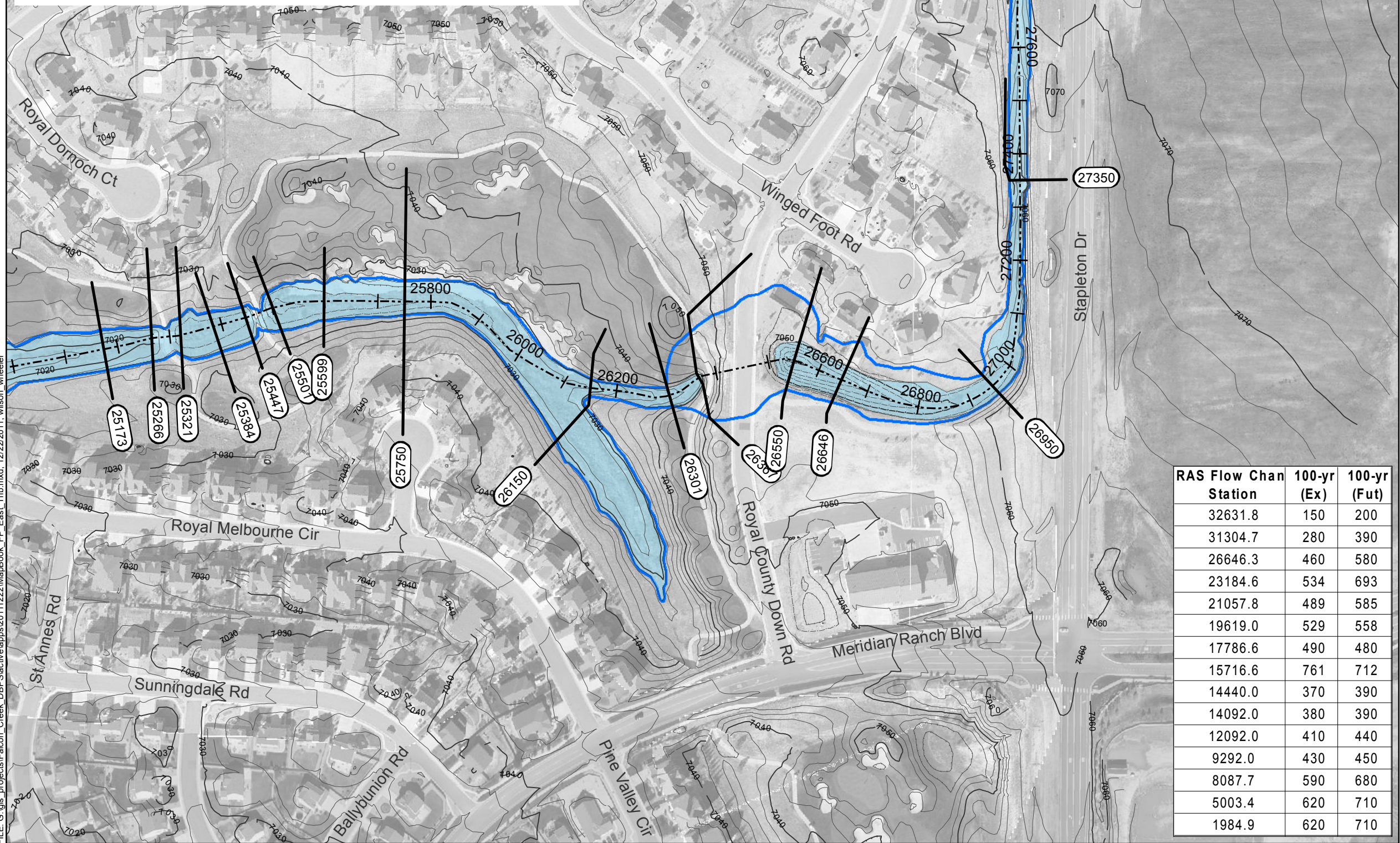
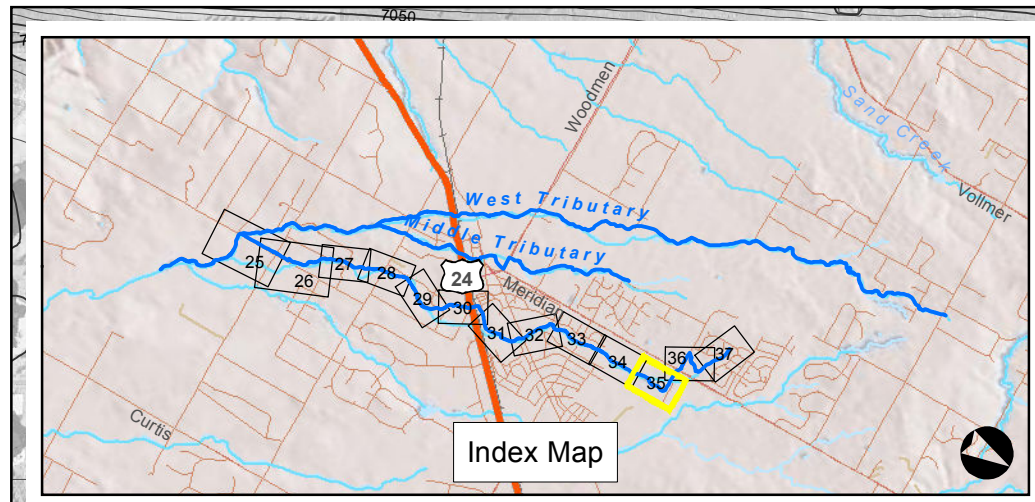
### Legend

- Approximate 100-yr Floodplain Existing
- Approximate 100-yr Floodplain Existing (Based on Assumed Split Flow Condition)
- Approximate 100-yr Floodplain Future
- Approximate 100-yr Floodplain Future (Based on Assumed Split Flow Condition)
- Shallow Flooding
- HEC-RAS Centerline
- XSCutLines (East Trib)
- FEMA Regulatory Floodplain (Effective as of 1999)\*
- Study Limit

\*Letters of Map Change completed after 1999 are not shown



FILE: G:\gis\_projects\Falcon\_Creek\_DBPS\active\apps\20111222\MapBook\_FP\_East\_Trib.mxd, 12/22/2011, wilson\_wheeler



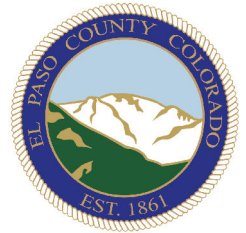
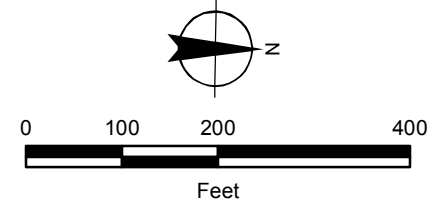
# Sheet 4-35

## East Tributary Floodplain Falcon DBPS El Paso County, CO

- Legend**
- Approximate 100-yr Floodplain Existing
  - Approximate 100-yr Floodplain Existing (Based on Assumed Split Flow Condition)
  - Approximate 100-yr Floodplain Future
  - Approximate 100-yr Floodplain Future (Based on Assumed Split Flow Condition)
  - Shallow Flooding
  - HEC-RAS Centerline
  - XSCutLines (East Trib)
  - FEMA Regulatory Floodplain (Effective as of 1999)\*
  - Study Limit

\*Letters of Map Change completed after 1999 are not shown

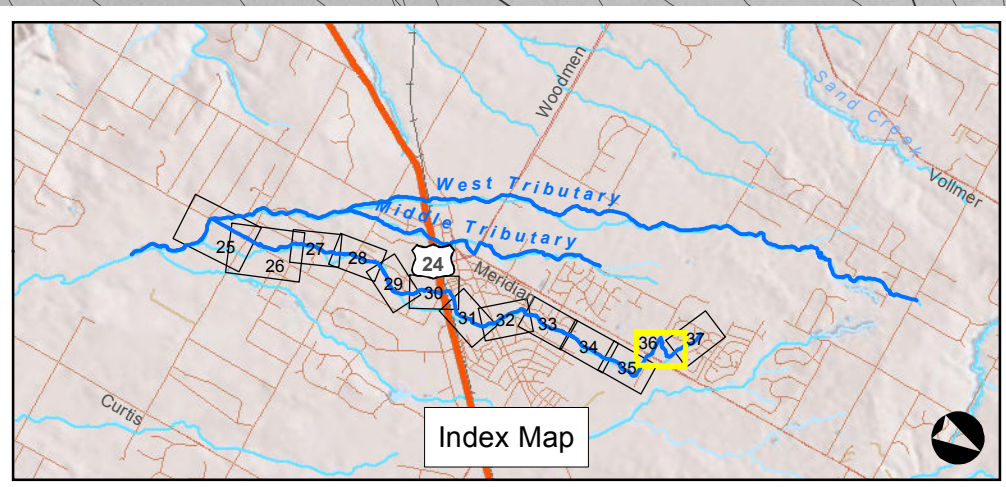
RAS Flow Chan Station	100-yr (Ex)	100-yr (Fut)
32631.8	150	200
31304.7	280	390
26646.3	460	580
23184.6	534	693
21057.8	489	585
19619.0	529	558
17786.6	490	480
15716.6	761	712
14440.0	370	390
14092.0	380	390
12092.0	410	440
9292.0	430	450
8087.7	590	680
5003.4	620	710
1984.9	620	710



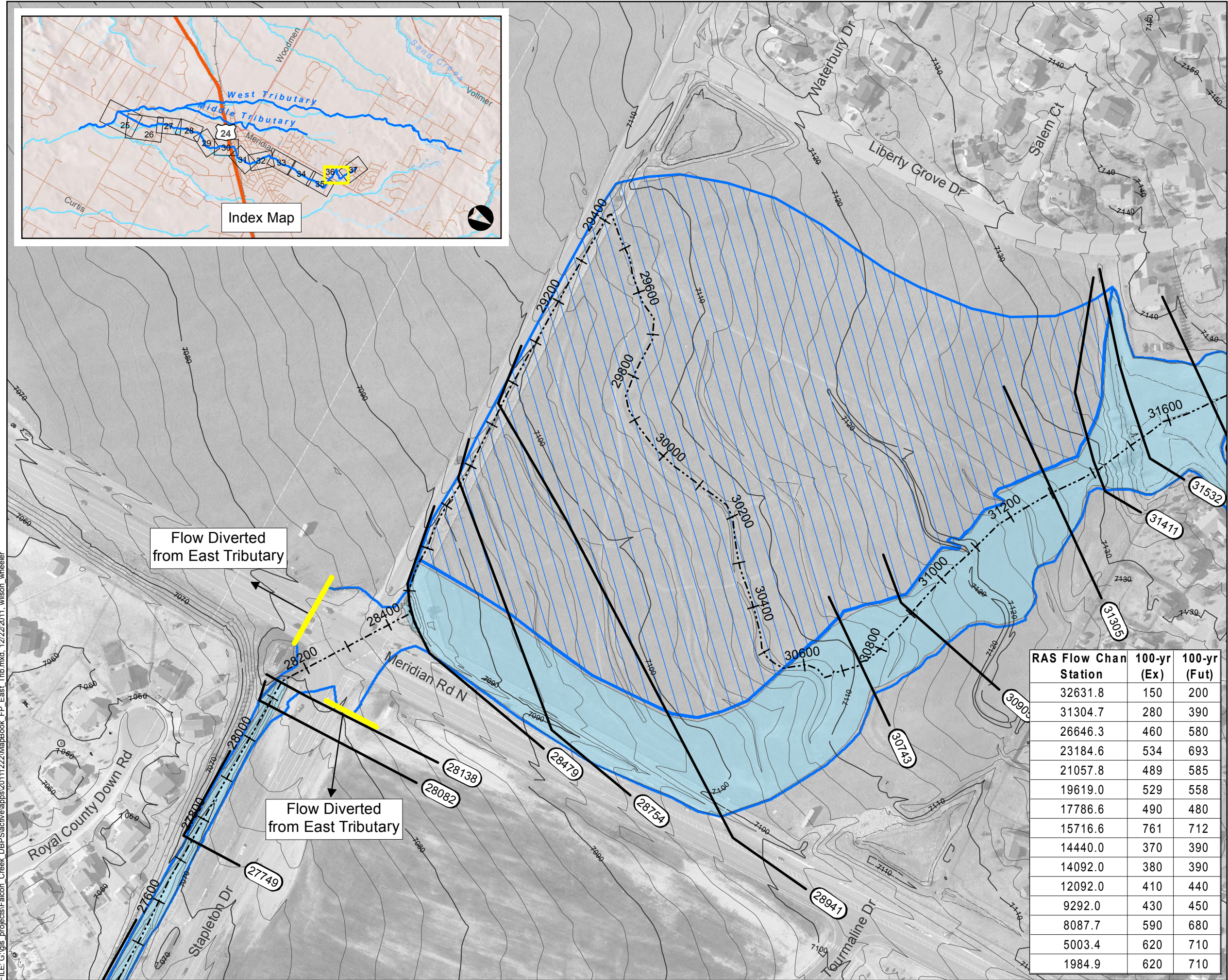
FILE: G:\gis\_projects\Falcon\_Creek\_DBPS\active\apps\2011222\MapBook\_FP\_East\_Trib.mxd, 12/22/2011, wilson\_wheeler

# Sheet 4-36

## East Tributary Floodplain Falcon DBPS El Paso County, CO



Index Map

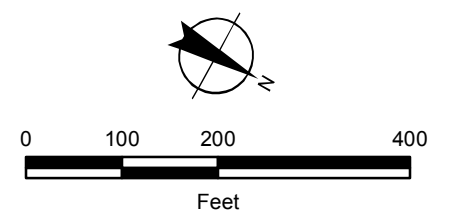


### Legend

- Approximate 100-yr Floodplain Existing
- Approximate 100-yr Floodplain Existing (Based on Assumed Split Flow Condition)
- Approximate 100-yr Floodplain Future
- Approximate 100-yr Floodplain Future (Based on Assumed Split Flow Condition)
- Shallow Flooding
- HEC-RAS Centerline
- XSCutLines (East Trib)
- FEMA Regulatory Floodplain (Effective as of 1999)\*
- Study Limit

\*Letters of Map Change completed after 1999 are not shown

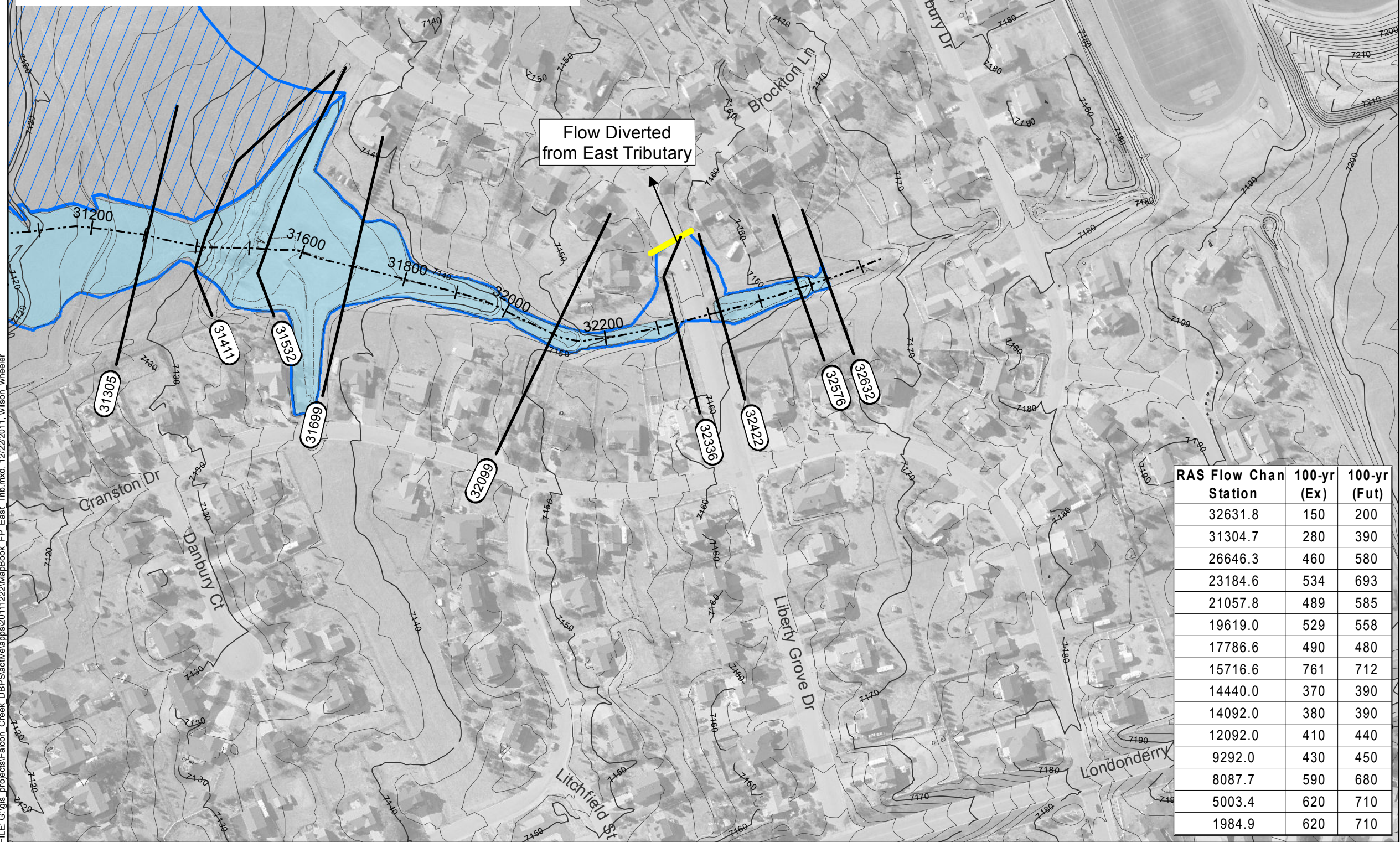
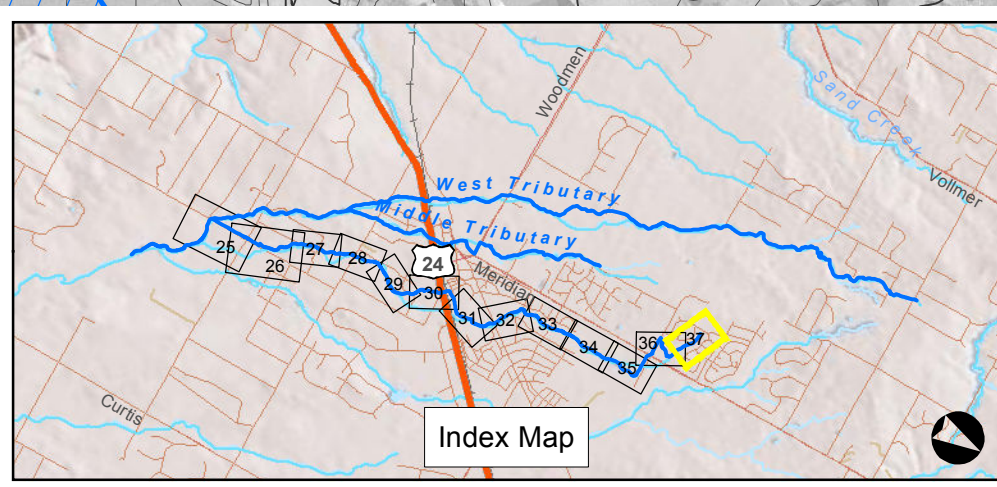
RAS Flow Chan Station	100-yr (Ex)	100-yr (Fut)
32631.8	150	200
31304.7	280	390
26646.3	460	580
23184.6	534	693
21057.8	489	585
19619.0	529	558
17786.6	490	480
15716.6	761	712
14440.0	370	390
14092.0	380	390
12092.0	410	440
9292.0	430	450
8087.7	590	680
5003.4	620	710
1984.9	620	710



FILE: G:\gis\_projects\Falcon\_Creek\_DBPS\active\papps\20111222\MapBook\_FP\_East\_Trib.mxd, 12/22/2011, wilson\_wheeler

# Sheet 4-37

## East Tributary Floodplain Falcon DBPS El Paso County, CO

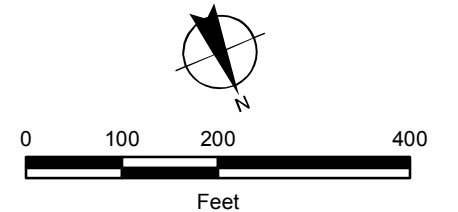


### Legend

- Approximate 100-yr Floodplain Existing
- Approximate 100-yr Floodplain Existing (Based on Assumed Split Flow Condition)
- Approximate 100-yr Floodplain Future
- Approximate 100-yr Floodplain Future (Based on Assumed Split Flow Condition)
- Shallow Flooding
- HEC-RAS Centerline
- XSCutLines (East Trib)
- FEMA Regulatory Floodplain (Effective as of 1999)\*
- Study Limit

\*Letters of Map Change completed after 1999 are not shown

RAS Flow Chan Station	100-yr (Ex)	100-yr (Fut)
32631.8	150	200
31304.7	280	390
26646.3	460	580
23184.6	534	693
21057.8	489	585
19619.0	529	558
17786.6	490	480
15716.6	761	712
14440.0	370	390
14092.0	380	390
12092.0	410	440
9292.0	430	450
8087.7	590	680
5003.4	620	710
1984.9	620	710



FILE: G:\gis\_projects\Falcon\_Creek\_DBPS\active\apps\2011222\MapBook\_FP\_East\_Trib.mxd, 12/22/2011, wilson\_wheeler