

Existing Detention Ponds <sup>1</sup>						
Pond	Map ID	Q <sub>2</sub> In (cfs)	Q <sub>2</sub> Out (cfs)	Q <sub>100</sub> In (cfs)	Q <sub>100</sub> Out (cfs)	Required Volume (AF) <sup>2</sup>
Paint Brush Hills Pond #4	PBH 4	38	29	200	150	1.34
Paint Brush Hills Pond A	PBH A	35	10	170	130	2.62
Paint Brush Hills Pond B1	PBH B1	80	51	420	270	9.17
Paint Brush Hills Pond B2	PBH B2	51	15	270	170	12.09
Paint Brush Hills Pond C	PBH C	56	11	300	160	6.77
Regional Pond MN	R MN	150	86	1,200	1,200	7.53
Regional Pond WU South	R WU	83	55	1,400	1,000	39.54
The Meadows Pond #1	M 1	11	4	75	43	3.25
The Meadows Pond #2	M 2	28	1	210	160	7.94
Woodmen Hills Pond #1 North	WH 1N	100	88	690	570	7.13
Woodmen Hills Pond #1 South	WH 1S	88	27	570	570	8.78
Woodmen Hills Pond #2	WH 2	37	11	580	530	9.18
Woodmen Hills Pond #3	WH 3	110	13	560	430	8.35
Woodmen Hills Pond #4	WH 4	110	15	700	350	22.02
Woodmen Hills Pond #5	WH 5	40	9	130	32	4.1
Woodmen Hills Pond H	WH H	140	110	750	750	2.66

Notes  
1: Represents future hydrology with no modifications to existing detention ponds and no new detention  
2: Required volume to highest WSE

Reach Alternative	Total (ft)
Protect In Place	13,226
Natural Channel Design	22,893
Small Drop Structures w/ Toe Protection	103,118
Large Drop Structures w/ Toe Protection	0

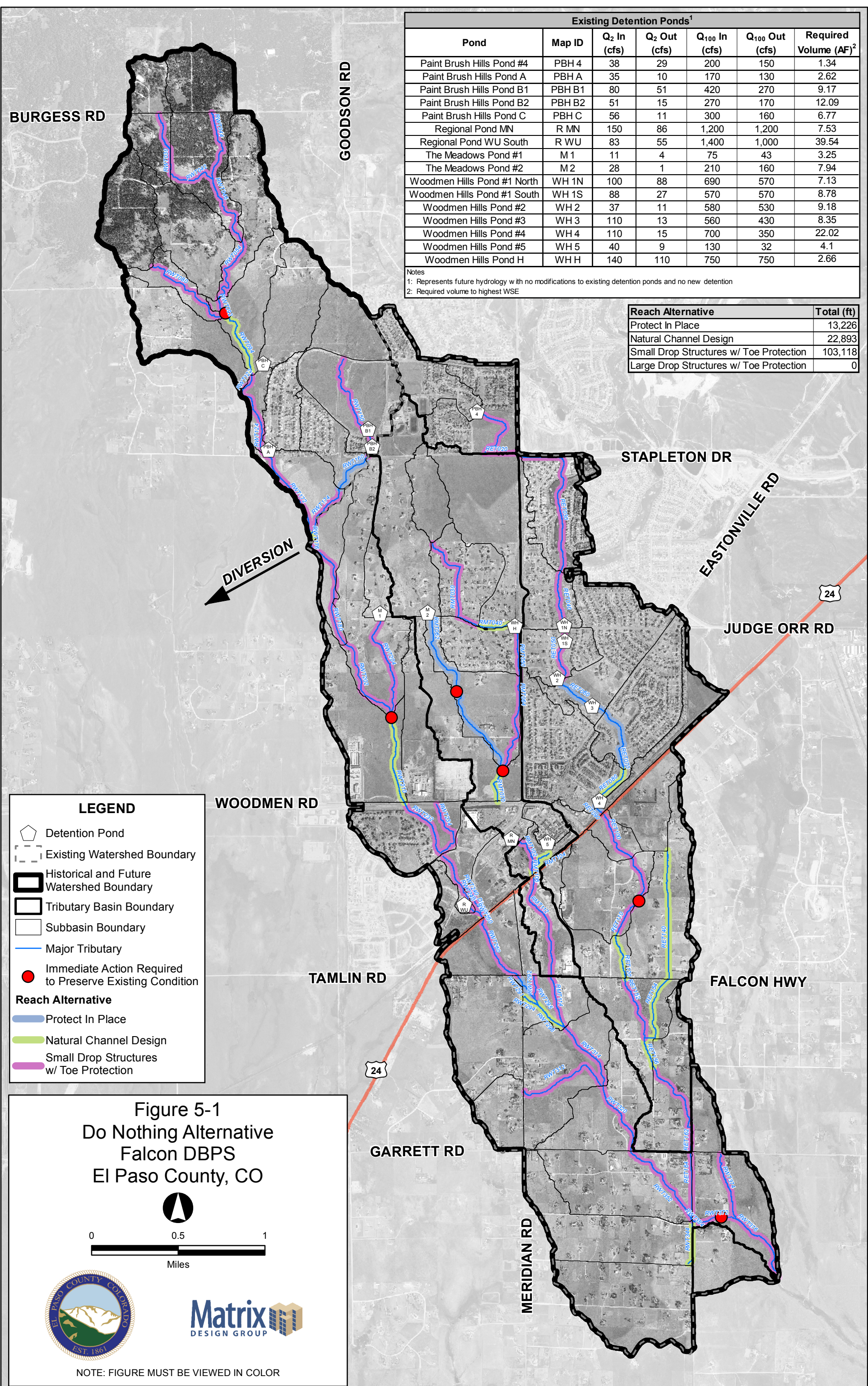


Figure 5-1  
Do Nothing Alternative  
Falcon DBPS  
El Paso County, CO



NOTE: FIGURE MUST BE VIEWED IN COLOR

FILE: G:\gis\_projects\Falcon\_Creek\_DBPStactives\do\_nothing\_alt.mxd, 12/19/2011, ron\_ramold