






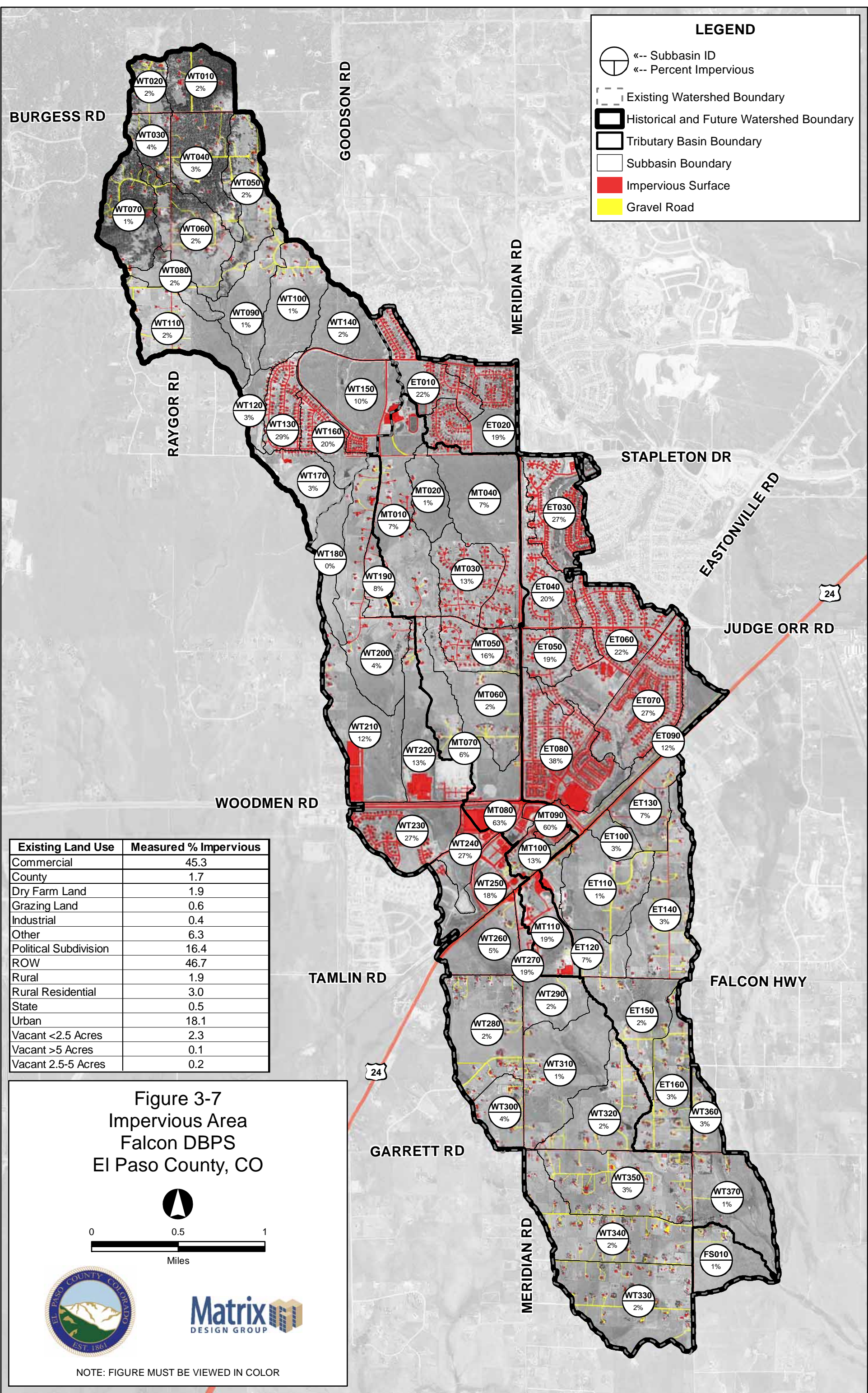


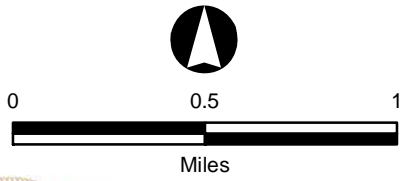
### LEGEND

-  Subbasin ID  
Percent Impervious
-  Existing Watershed Boundary
-  Historical and Future Watershed Boundary
-  Tributary Basin Boundary
-  Subbasin Boundary
-  Impervious Surface
-  Gravel Road



| Existing Land Use     | Measured % Impervious |
|-----------------------|-----------------------|
| Commercial            | 45.3                  |
| County                | 1.7                   |
| Dry Farm Land         | 1.9                   |
| Grazing Land          | 0.6                   |
| Industrial            | 0.4                   |
| Other                 | 6.3                   |
| Political Subdivision | 16.4                  |
| ROW                   | 46.7                  |
| Rural                 | 1.9                   |
| Rural Residential     | 3.0                   |
| State                 | 0.5                   |
| Urban                 | 18.1                  |
| Vacant <2.5 Acres     | 2.3                   |
| Vacant >5 Acres       | 0.1                   |
| Vacant 2.5-5 Acres    | 0.2                   |

**Figure 3-7**  
**Impervious Area**  
**Falcon DBPS**  
**El Paso County, CO**



NOTE: FIGURE MUST BE VIEWED IN COLOR

FILE: G:\gis\_projects\Falcon\_Creek\_DBPS\active\apps\20110613\impervious.mxd, 8/29/2011, wilson\_wheeler