

Regional Detention Alternative ¹						
Pond		Q ₂ In (cfs)	Q ₂ Out (cfs)	Q ₁₀₀ In (cfs)	Q ₁₀₀ Out (cfs)	Required Volume (AF) ²
Paint Brush Hills Pond #4	PBH 4	38	29	200	150	1.34
Paint Brush Hills Pond A	PBH A	35	7	170	140	2.62
Paint Brush Hills Pond B1	PBH B1	80	51	420	270	9.17
Paint Brush Hills Pond B2	PBH B2	51	10	270	180	12.09
Paint Brush Hills Pond C	PBH C	56	3	300	140	6.77
Regional Pond MN	R MN	150	140	1,200	1,100	7.53
Regional Pond R1	R R1	180	79	1,800	1,700	46.95
Regional Pond R2	R R2	140	140	2,400	2,400	7.90
Regional Pond WU South	R WU	68	27	1,300	1,200	39.54
The Meadows Pond #1	M 1	11	0	75	2	3.25
The Meadows Pond #2	M 2	28	5	210	99	7.94
Woodmen Hills Pond #1 North	WH 1N	100	65	690	670	7.13
Woodmen Hills Pond #1 South	WH 1S	65	14	670	620	8.78
Woodmen Hills Pond #2	WH 2	37	10	640	540	9.18
Woodmen Hills Pond #3	WH 3	110	14	570	510	8.35
Woodmen Hills Pond #4	WH 4	110	14	820	400	40.45
Woodmen Hills Pond #5	WH 5	40	1	130	19	4.10
Woodmen Hills Pond H	WH H	140	110	750	750	2.66

Notes
1: Represents future hydrology with retrofit existing detention ponds and 2 new regional detention ponds
2: Required volume to highest WSE

Reach Alternative	Total (ft)
Protect In Place	23,952
Natural Channel Design	22,581
Small Drop Structures w/ Toe Protection	92,704
Large Drop Structures w/ Toe Protection	0

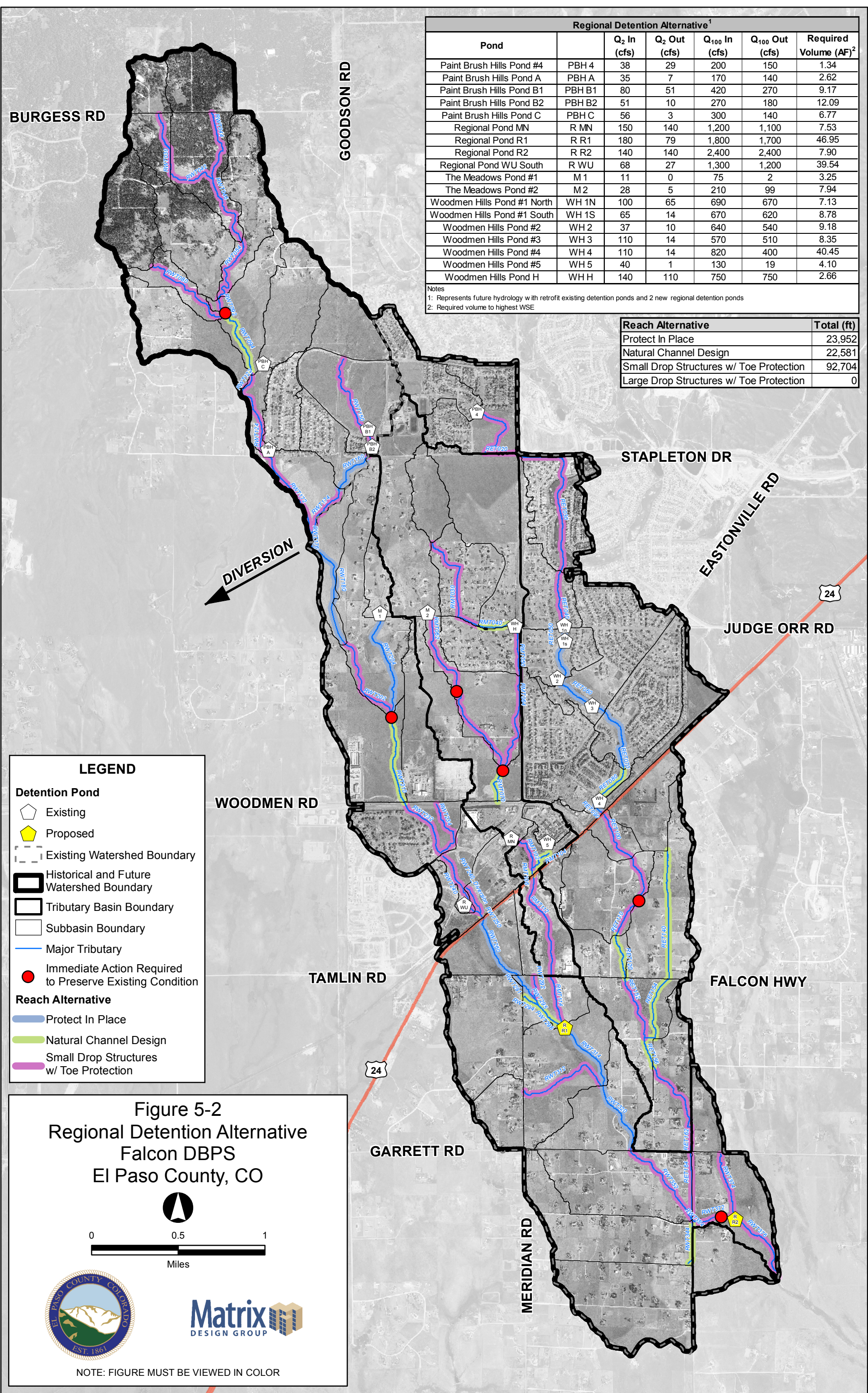


Figure 5-2
Regional Detention Alternative
Falcon DBPS
El Paso County, CO



NOTE: FIGURE MUST BE VIEWED IN COLOR