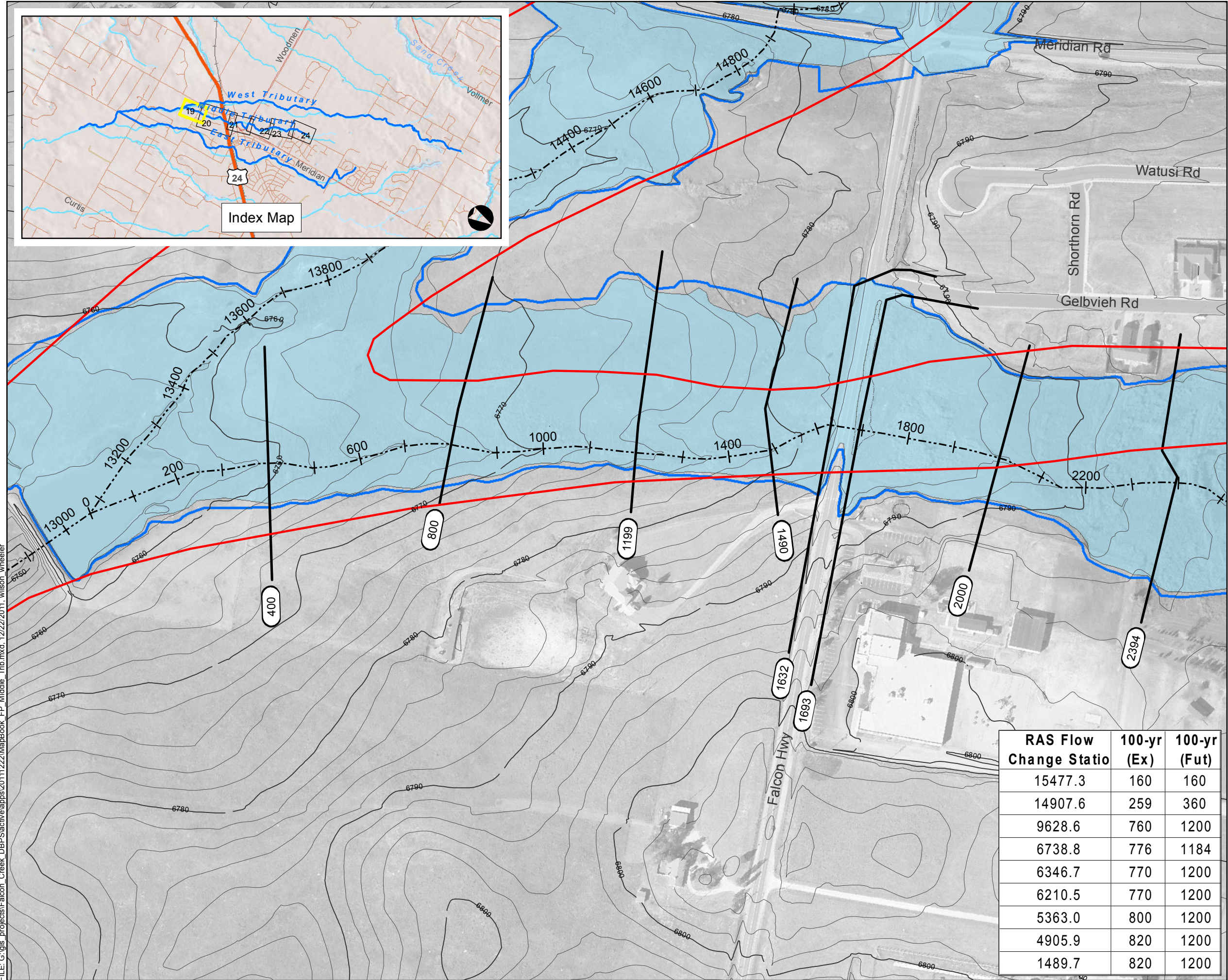
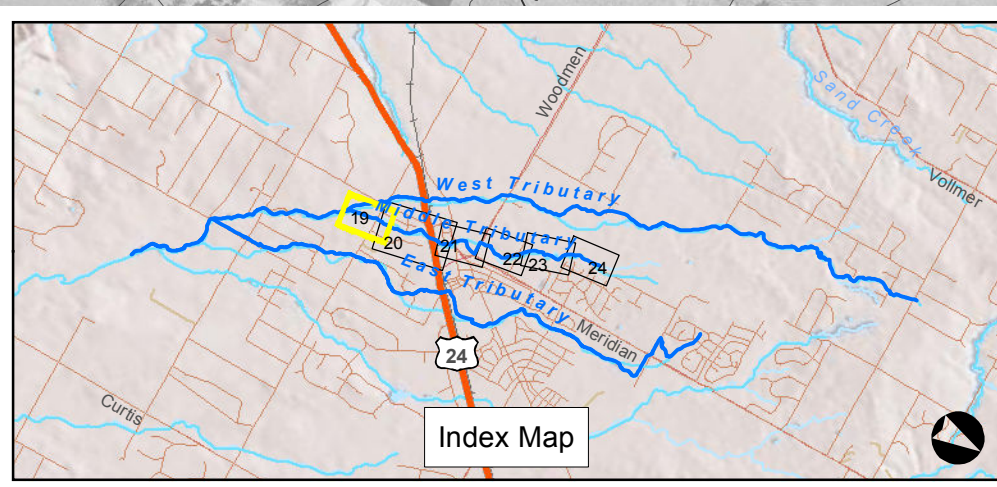


Sheet 4-19

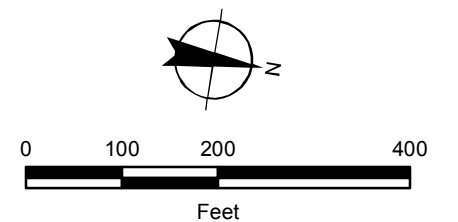
Middle Tributary Floodplain Falcon DBPS El Paso County, CO



Legend

- Approximate 100-yr Floodplain Existing
- Approximate 100-yr Floodplain Existing (Based on Assumed Split Flow Condition)
- Approximate 100-yr Floodplain Future
- Approximate 100-yr Floodplain Future (Based on Assumed Split Flow Condition)
- Shallow Flooding
- HEC-RAS Centerline
- XSCutLines (Middle Trib)
- FEMA Regulatory Floodplain (Effective as of 1999)*
- Study Limit

*Letters of Map Change completed after 1999 are not shown



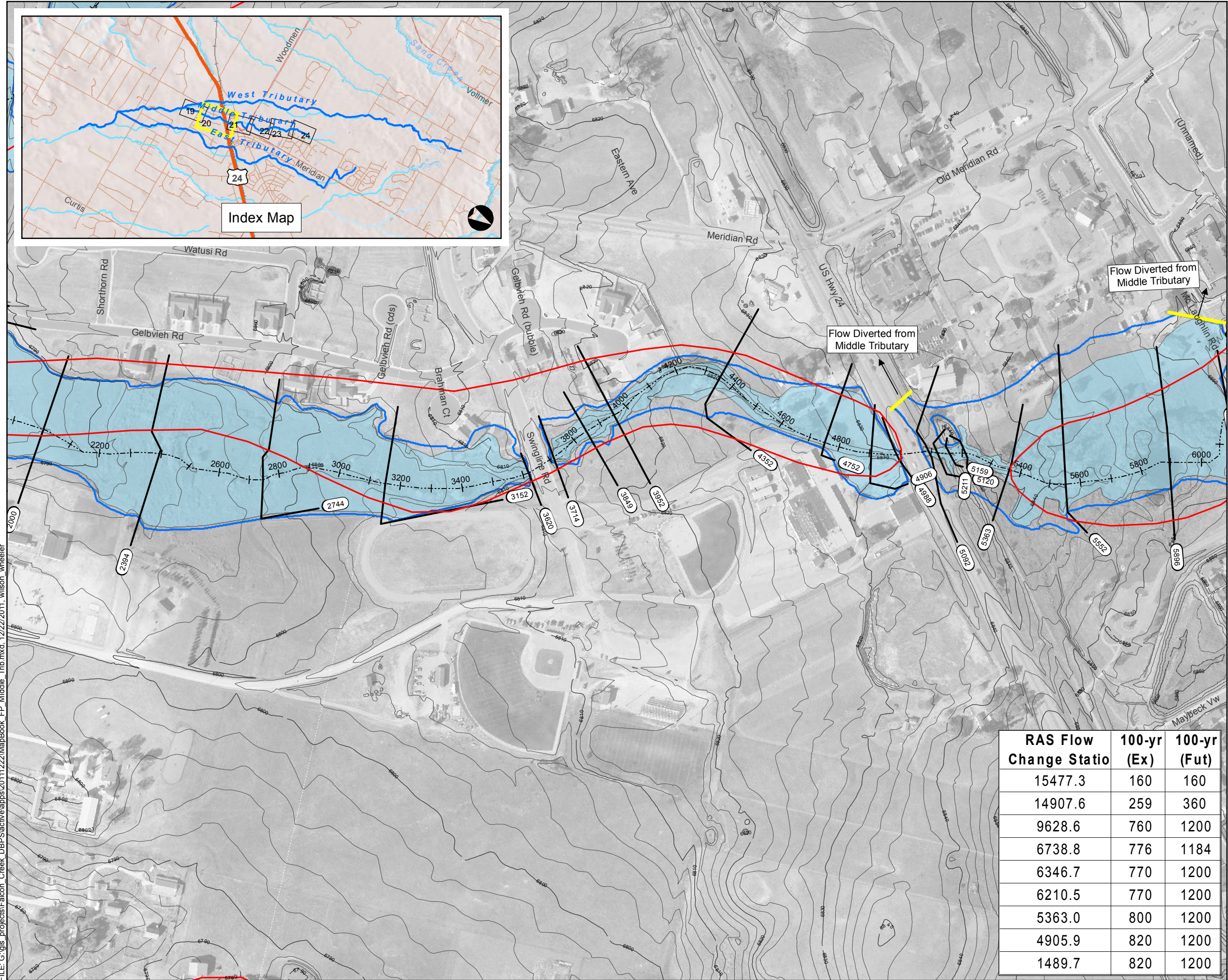
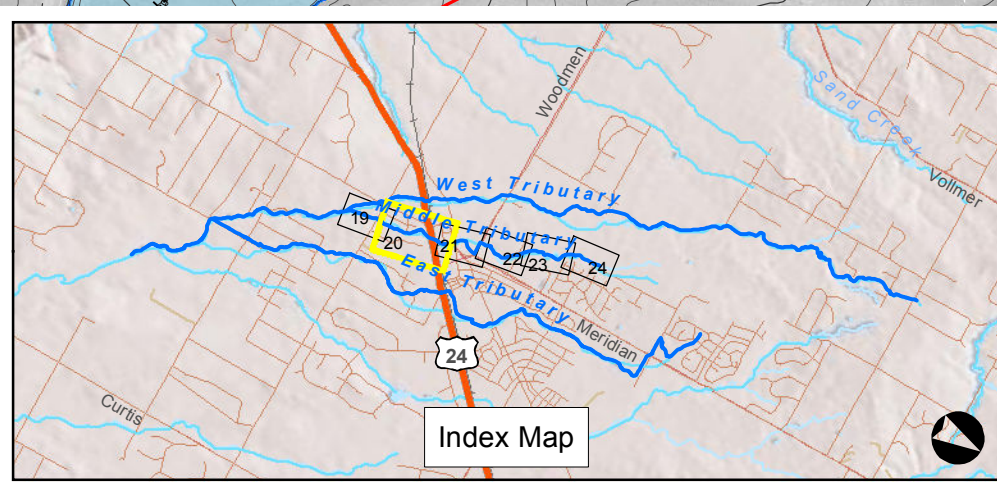
RAS Flow Change Statio	100-yr (Ex)	100-yr (Fut)
15477.3	160	160
14907.6	259	360
9628.6	760	1200
6738.8	776	1184
6346.7	770	1200
6210.5	770	1200
5363.0	800	1200
4905.9	820	1200
1489.7	820	1200



FILE: G:\gis_projects\Falcon_Creek_DBPS\active\paps\20111222\MapBook_FP_Middle_Trib.mxd, 12/22/2011, wilson_wheeler

Sheet 4-20

Middle Tributary Floodplain Falcon DBPS El Paso County, CO

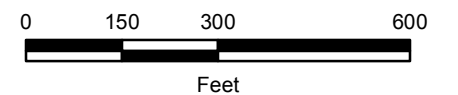
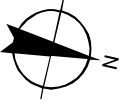


Legend

- Approximate 100-yr Floodplain Existing
- Approximate 100-yr Floodplain Existing (Based on Assumed Split Flow Condition)
- Approximate 100-yr Floodplain Future
- Approximate 100-yr Floodplain Future (Based on Assumed Split Flow Condition)
- Shallow Flooding
- HEC-RAS Centerline
- XSCutLines (Middle Trib)
- FEMA Regulatory Floodplain (Effective as of 1999)*
- Study Limit

*Letters of Map Change completed after 1999 are not shown

See LOMR 01-08-226P.



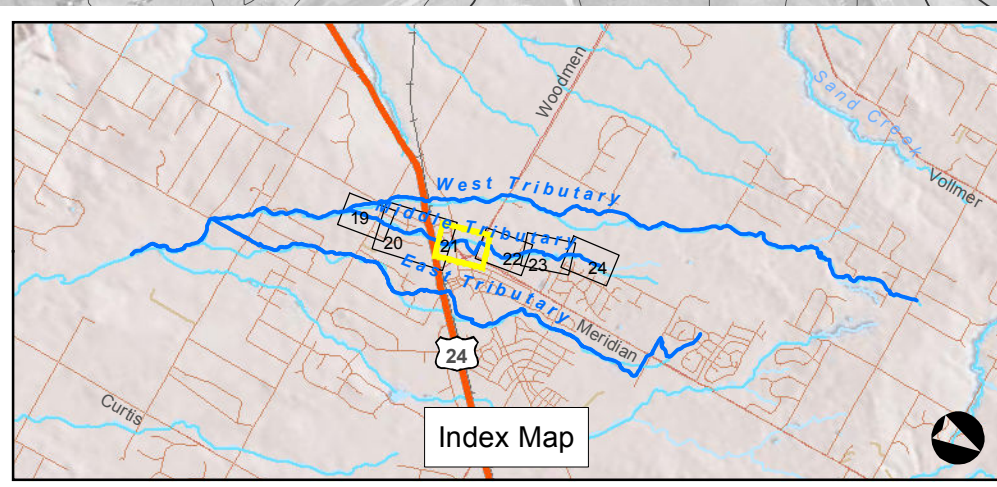
RAS Flow Change Statio	100-yr (Ex)	100-yr (Fut)
15477.3	160	160
14907.6	259	360
9628.6	760	1200
6738.8	776	1184
6346.7	770	1200
6210.5	770	1200
5363.0	800	1200
4905.9	820	1200
1489.7	820	1200



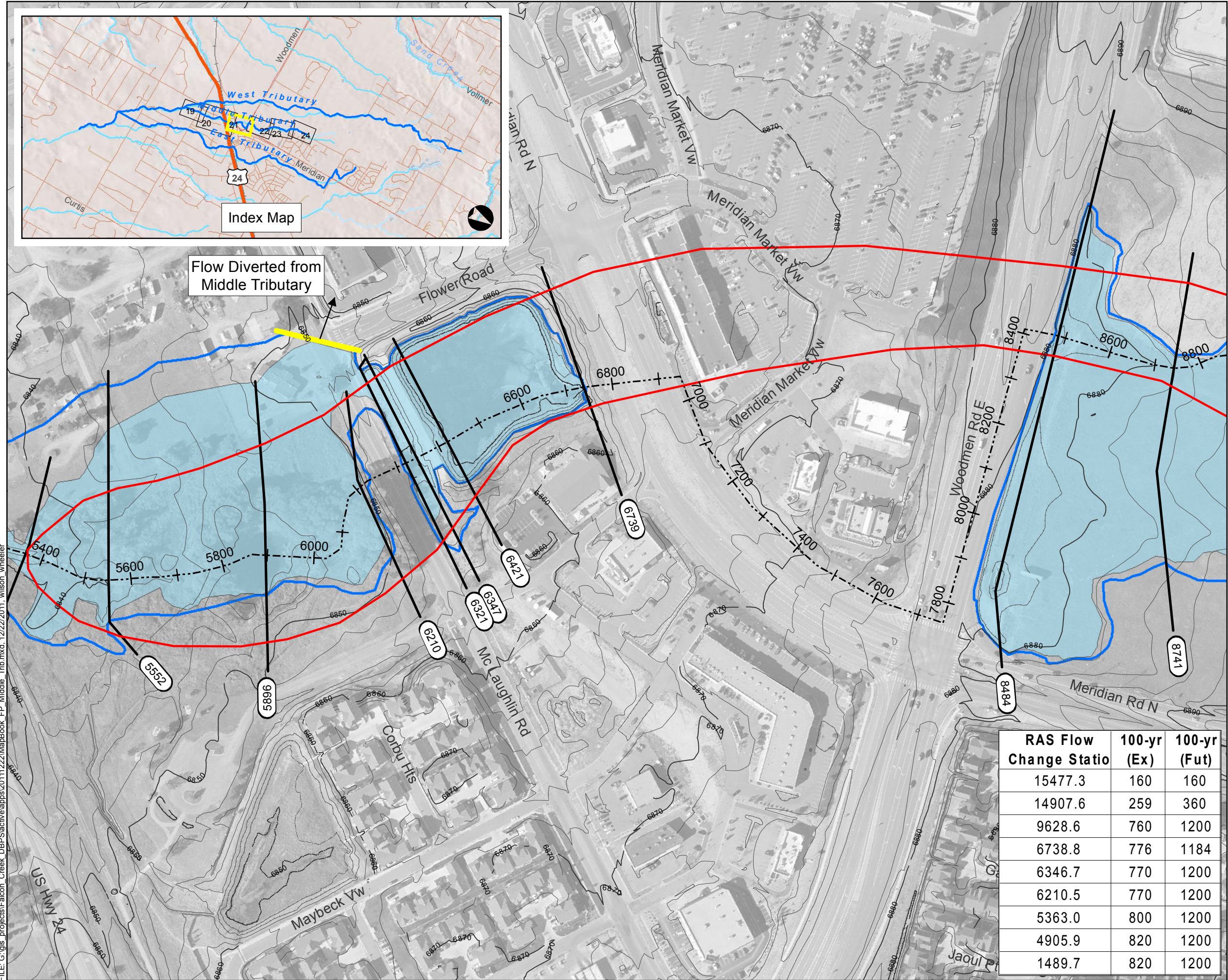
FILE: G:\gis_projects\Falcon_Creek_DBPS\active\paps\20111222\MapBook_FP_Middle_Trib.mxd, 12/22/2011, wilson_wheeler

Sheet 4-21

Middle Tributary Floodplain Falcon DBPS El Paso County, CO



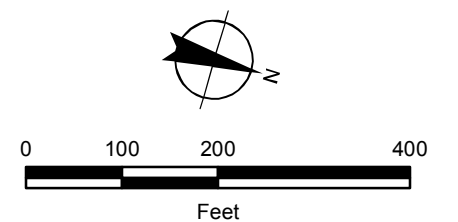
Flow Diverted from Middle Tributary



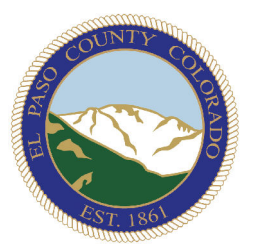
Legend

- Approximate 100-yr Floodplain Existing
- Approximate 100-yr Floodplain Existing (Based on Assumed Split Flow Condition)
- Approximate 100-yr Floodplain Future
- Approximate 100-yr Floodplain Future (Based on Assumed Split Flow Condition)
- Shallow Flooding
- HEC-RAS Centerline
- XSCutLines (Middle Trib)
- FEMA Regulatory Floodplain (Effective as of 1999)*
- Study Limit

*Letters of Map Change completed after 1999 are not shown



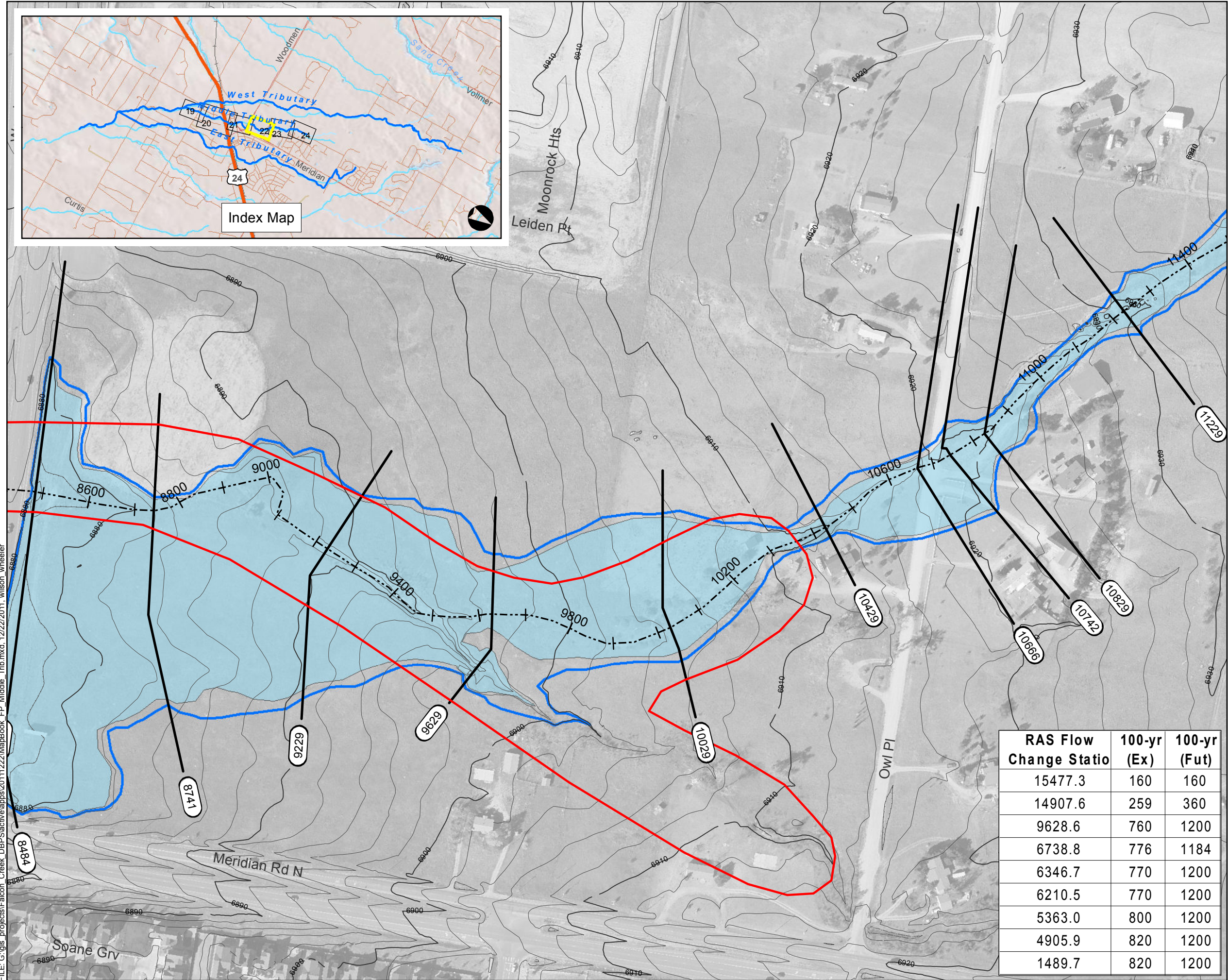
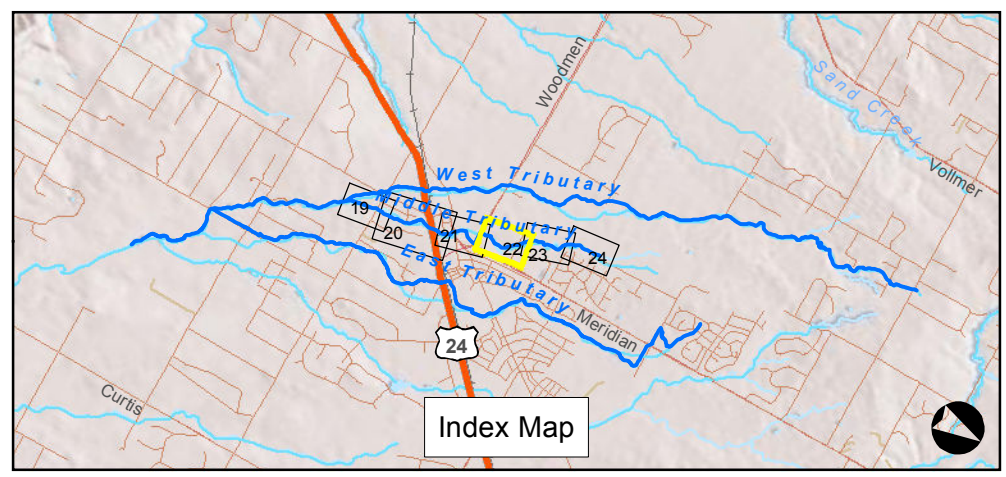
RAS Flow Change Statio	100-yr (Ex)	100-yr (Fut)
15477.3	160	160
14907.6	259	360
9628.6	760	1200
6738.8	776	1184
6346.7	770	1200
6210.5	770	1200
5363.0	800	1200
4905.9	820	1200
1489.7	820	1200



FILE: G:\gis_projects\Falcon_Creek_DBPS\active\paps\20111222\MapBook_FP_Middle_Trib.mxd, 12/22/2011, wilson_wheeler

Sheet 4-22

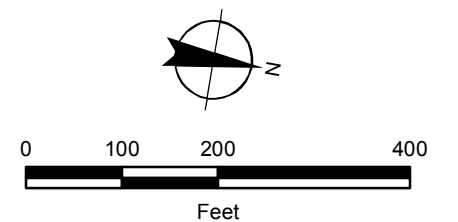
Middle Tributary Floodplain Falcon DBPS El Paso County, CO



Legend

- Approximate 100-yr Floodplain Existing
- Approximate 100-yr Floodplain Existing (Based on Assumed Split Flow Condition)
- Approximate 100-yr Floodplain Future
- Approximate 100-yr Floodplain Future (Based on Assumed Split Flow Condition)
- Shallow Flooding
- HEC-RAS Centerline
- XSCutLines (Middle Trib)
- FEMA Regulatory Floodplain (Effective as of 1999)*
- Study Limit

*Letters of Map Change completed after 1999 are not shown



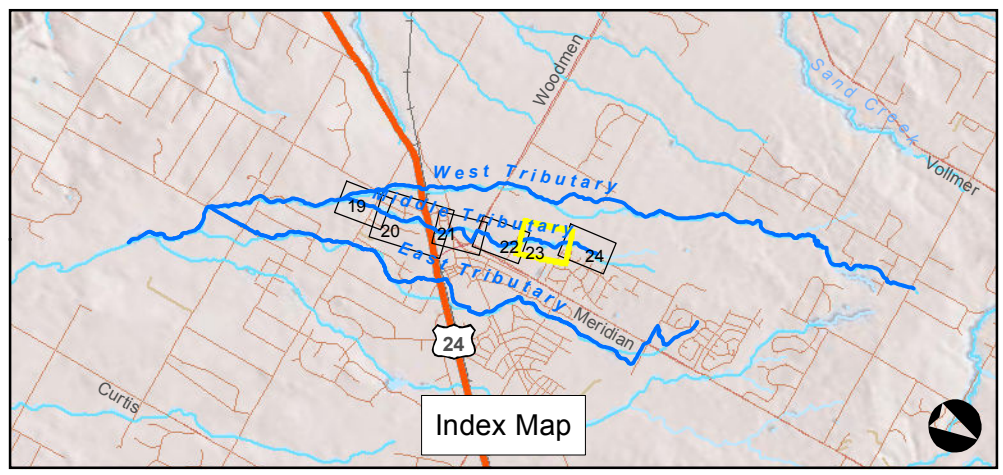
RAS Flow Change Statio	100-yr (Ex)	100-yr (Fut)
15477.3	160	160
14907.6	259	360
9628.6	760	1200
6738.8	776	1184
6346.7	770	1200
6210.5	770	1200
5363.0	800	1200
4905.9	820	1200
1489.7	820	1200



FILE: G:\gis_projects\Falcon_Creek_DBPS\active\apps\20111222\MapBook_FP_Middle_Trib.mxd, 12/22/2011, wilson_wheeler

Sheet 4-23

Middle Tributary Floodplain Falcon DBPS El Paso County, CO

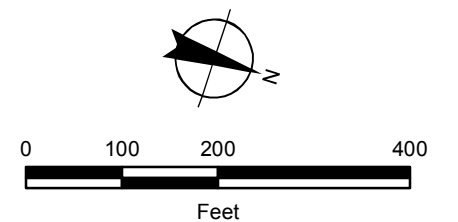


Index Map

Legend

- Approximate 100-yr Floodplain Existing
- Approximate 100-yr Floodplain Existing (Based on Assumed Split Flow Condition)
- Approximate 100-yr Floodplain Future
- Approximate 100-yr Floodplain Future (Based on Assumed Split Flow Condition)
- Shallow Flooding
- HEC-RAS Centerline
- XSCutLines (Middle Trib)
- FEMA Regulatory Floodplain (Effective as of 1999)*
- Study Limit

*Letters of Map Change completed after 1999 are not shown



RAS Flow Change Statio	100-yr (Ex)	100-yr (Fut)
15477.3	160	160
14907.6	259	360
9628.6	760	1200
6738.8	776	1184
6346.7	770	1200
6210.5	770	1200
5363.0	800	1200
4905.9	820	1200
1489.7	820	1200

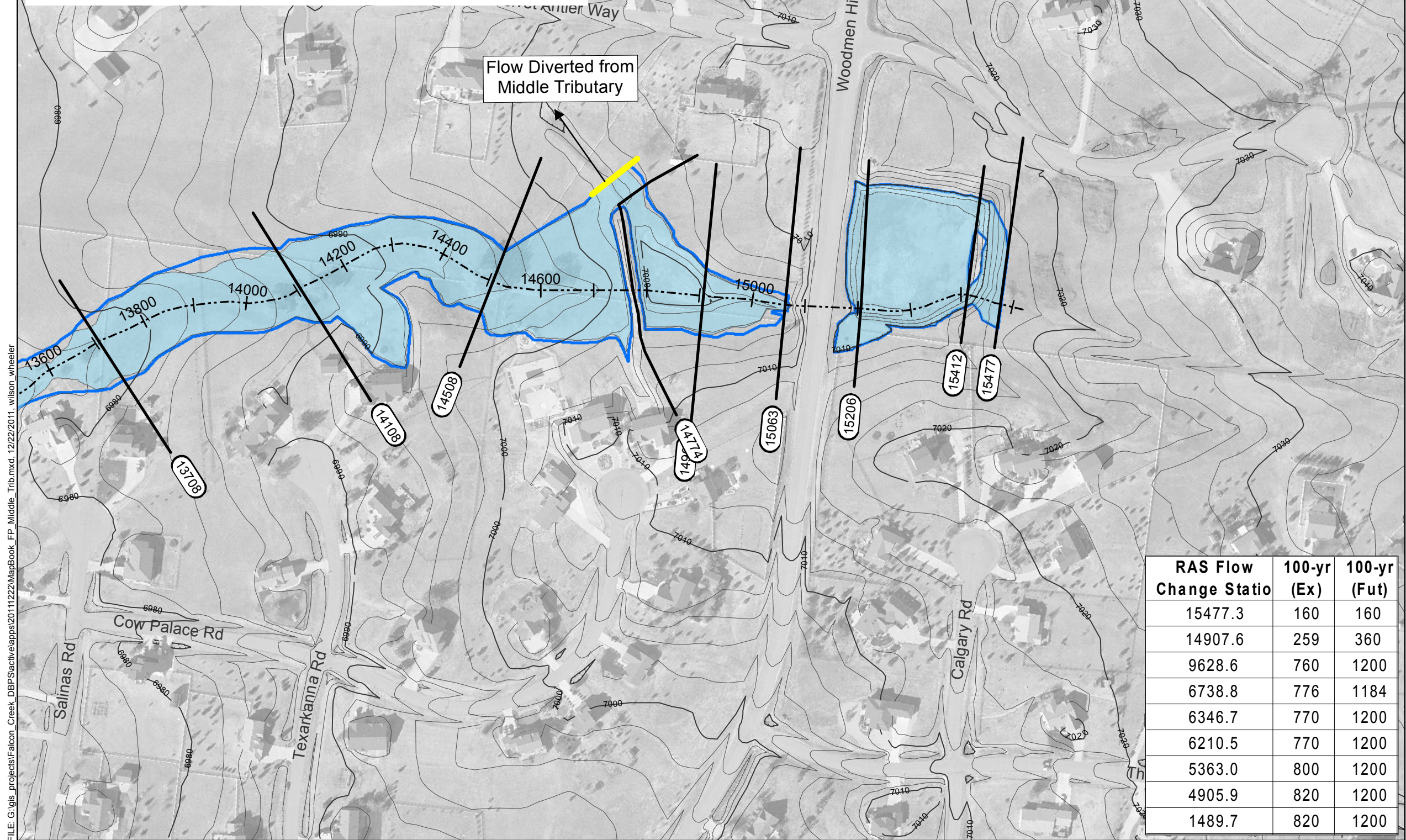
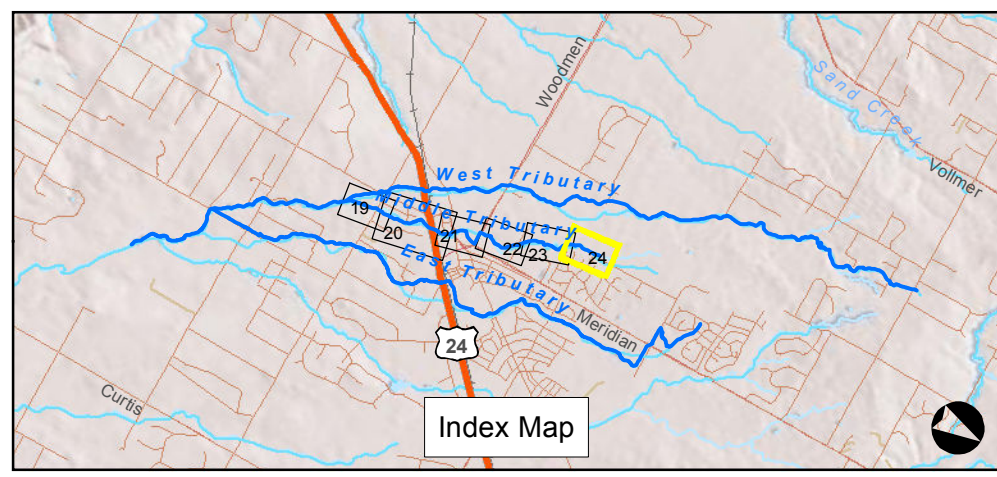
Flow Diverted from Middle Tributary

FILE: G:\gis_projects\Falcon_Creek_DBPS\active\apps\20111222\MapBook_FP_Middle_Trib.mxd, 12/22/2011, wilson_wheeler



Sheet 4-24

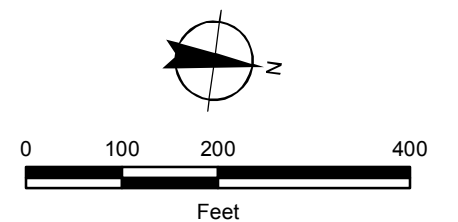
Middle Tributary Floodplain Falcon DBPS El Paso County, CO



Legend

- Approximate 100-yr Floodplain Existing
- Approximate 100-yr Floodplain Existing (Based on Assumed Split Flow Condition)
- Approximate 100-yr Floodplain Future
- Approximate 100-yr Floodplain Future (Based on Assumed Split Flow Condition)
- Shallow Flooding
- HEC-RAS Centerline
- XSCutLines (Middle Trib)
- FEMA Regulatory Floodplain (Effective as of 1999)*
- Study Limit

*Letters of Map Change completed after 1999 are not shown



RAS Flow Change Statio	100-yr (Ex)	100-yr (Fut)
15477.3	160	160
14907.6	259	360
9628.6	760	1200
6738.8	776	1184
6346.7	770	1200
6210.5	770	1200
5363.0	800	1200
4905.9	820	1200
1489.7	820	1200



FILE: G:\gis_projects\Falcon_Creek_DBPS\activeapps\2011222\MapBook_FP_Middle_Trib.mxd, 12/22/2011, wilson_wheeler