

**Luminaire Schedule**

Symbol	Qty	Label	Arrangement	LMF	Lum. Lumens	Lum. Watts	Part Number
	8	5M-22L-2(180)	2 @ 180°	1.000	22000	131	OSQL-C-22L-40K7-5M-UL-NM-__ w/OSQ-ML-C-DA-__

**Calculation Summary (Footcandles calculated using LMF: 1.00)**

Label	Units	Avg	Max	Min	Avg/Min	Max/Min
All Calc Points	Fc	1.16	5.6	0.0	N.A.	N.A.
Paved Parking	Fc	1.74	5.6	0.1	17.40	56.00

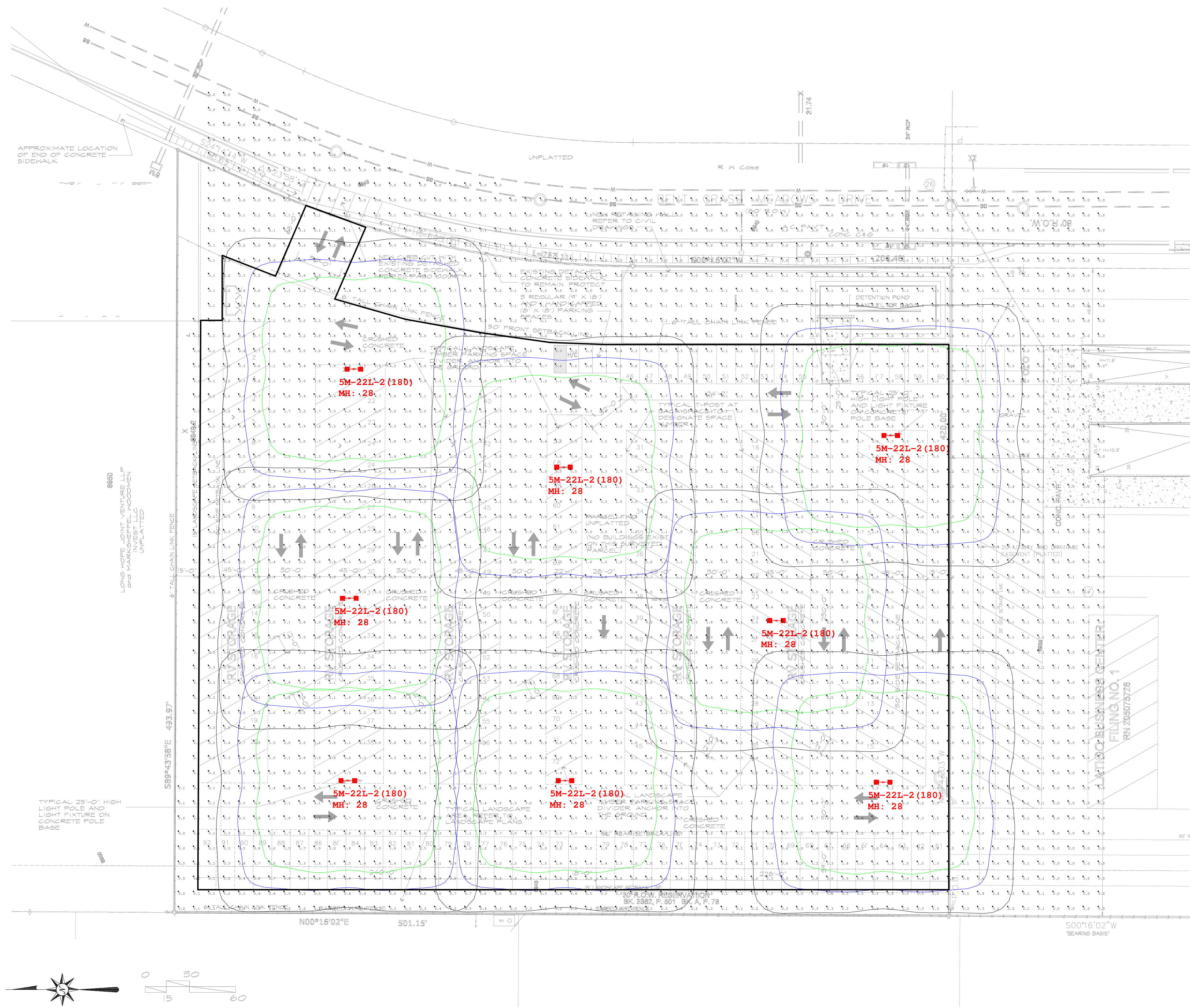
Fixture Mounting Height: 27' AFG (25' Pole + 2.0' Base)

Pole Schedule:  
(8) - CL-SSP-4011-25-D2-\_\_ (25' x 4" x 11ga STEEL SQUARE POLE, 4@90°)

Proposed poles meet a 120 MPH sustained winds.

Additional Required Equipment:  
(16) OSQ-ML-C-DA-\_\_ (Direct Arm Mount)

\*\*\* CUSTOMER TO VERIFY ORDERING INFORMATION AND CATALOGUE NUMBER PRIOR TO PLACING ORDER \*\*\*



9201 Washington Ave, Racine, WI 53406 - (800) 236-6800  
https://www.creeighting.com - Email: applications@creeighting.com

Illumination results shown on this lighting design are based on project parameters provided to Cree Lighting used in conjunction with luminaire test procedures conducted under laboratory conditions. Actual project conditions differing from these design parameters may affect field results. The customer is responsible for verifying dimensional accuracy along with compliance with any applicable electrical, lighting or energy code.

**Project Name: Falcon Storage - 7630 Bent Grass Meadows Dr, Peyton, CO 80831**

CASE #: 00612207

Footcandles calculated at grade

Filename: 240617RV1CJW.AGI

Drawn By: Colin Withrow

Date: 6/17/2024

Scale 1" = 40'

