

**LEGAL DATA**

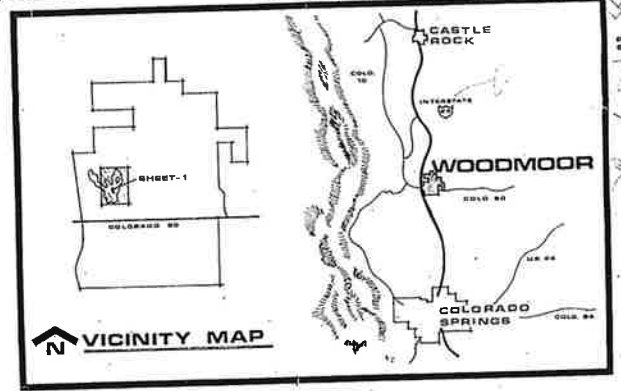
A PORTION OF SECTION 12-24 IN TOWNSHIP 11, RANGE 87 SOUTH, WEST OF THE 8 TH PRINCIPAL MERIDIAN, COUNTY OF EL PASO, STATE OF COLORADO

**NOTES**

1. ALL PROJECT AREAS SUBJECT TO MINIMUM COUNTY SETBACKS.  
 2. EACH DWELLING UNIT WILL PROVIDE 3 OFF STREET PARKING SPACES.  
 3. 25% OPEN SPACE MINIMUM SHALL BE PROVIDED.

**DESIGN DATA**

LAND USE	ACRES	U/AC	TOTAL UNITS
P.A. 4 MULTI-FAMILY	11.4	10/AC	110
P.A. 3 MULTI-FAMILY	8.7	10/AC	87
P.A. 2 MULTI-FAMILY	8.7	10/AC	87
P.A. 1 MULTI-FAMILY	11.4	10/AC	114
<b>TOTALS</b>	<b>38.6</b>		<b>388</b>



**WOODMOOR LAKE TOWNHOUSES**  
 PRELIMINARY PLAT

ENVIRONMENTAL PLANNING OFFICE  
 WOODMOOR CORPORATION  
 BOX X  
 MONUMENT, COLORADO

SHEET  
**1**  
 OF 1

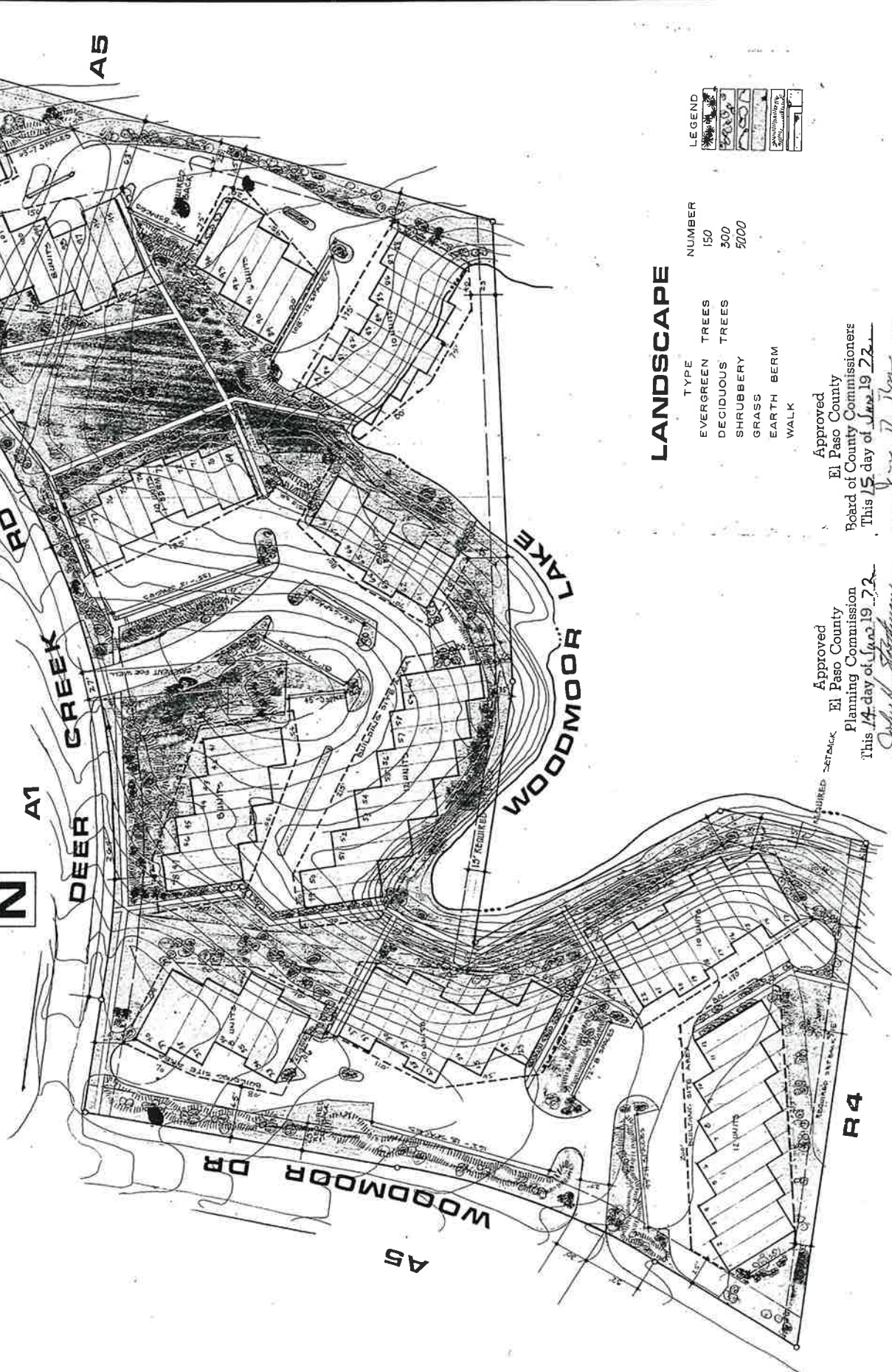


**NOTES**

1. A MINIMUM OF 35% OPEN SPACE IS PROVIDED.
2. ALL ROADWAY WILL BE PAVED AND WILL BE PRIVATELY OWNED.
3. UNITS WILL BE TWO STORIES HIGH AND HAVE A BASEMENT WHICH MAY BE PARTIALLY ABOVE GRADE.
4. ALL UNITS WILL HAVE A TWO CAR GARAGE OR CAR PORT EXCEPT ONE BEDROOM UNITS WHICH MAY HAVE A ONE CAR GARAGE OR CAR PORT.

**DATA**

UNIT TYPE	ACRES	U/AC	UNITS	SQ. FT.
LAND USE: MULTI-FAMILY	11.4	10	110	
1 BEDROOM 11/2x11/2			18	800
2 BEDROOM 11x11/4			52	1632
5 BEDROOM 11/2x11/4			40	2400



**LANDSCAPE**

TYPE	NUMBER
EVERGREEN TREES	150
DECIDUOUS TREES	300
SHRUBBERY	5000
GRASS	
EARTH BERM	
WALK	



Approved  
El Paso County  
Planning Commission  
This 14<sup>th</sup> day of June 19 72  
*[Signature]*  
Chairman

Approved  
El Paso County  
Board of County Commissioners  
This 15<sup>th</sup> day of June 19 72  
*[Signature]*  
Chairman

**THE COVE  
AT WOODMOOR**

ENVIRONMENTAL PLANNING OFFICE  
WOODMOOR CORPORATION  
BOX X  
MONUMENT, COLORADO



Current  
Zoning