

R/25483/ADD 20-91

12775 Peregrine way
Sched. 62110010'1

RR-5

Plat 2462

Lot 1 BLK 2 Falcon Forest Sub

Fl 2

5.1 acres

Living - 2,379

Deck - 804

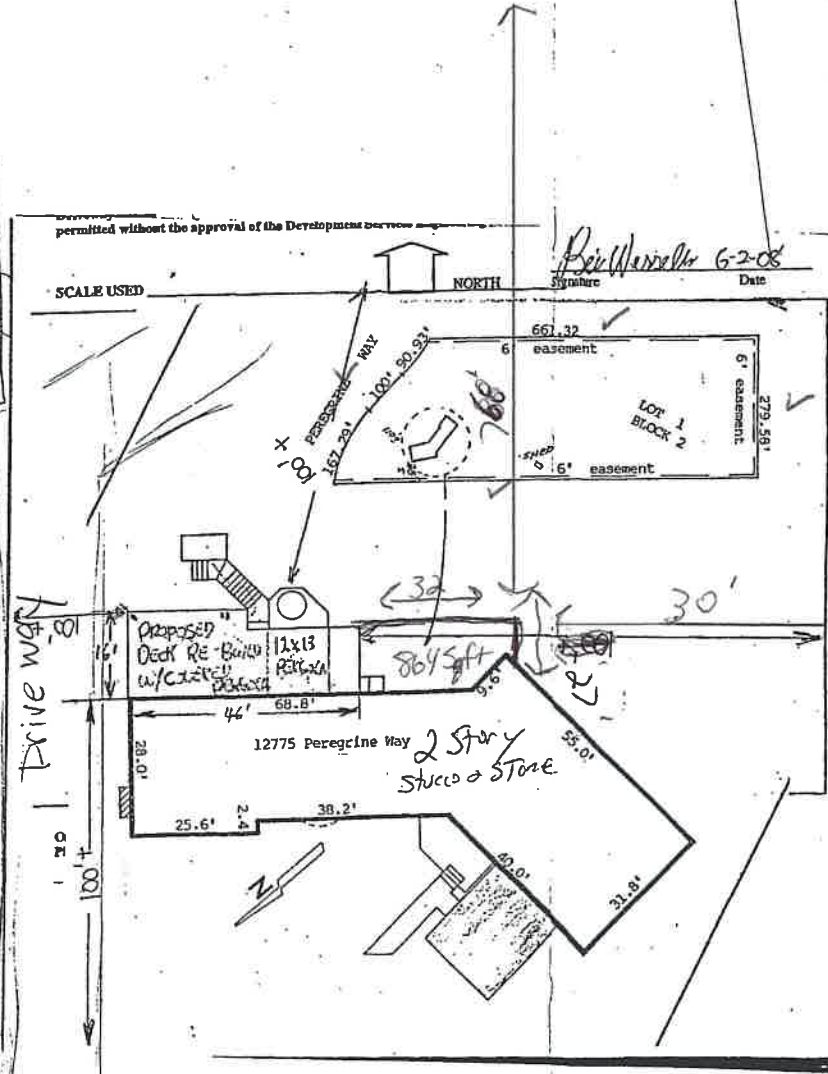
Total - 3,183

Planning and Community Development approval is contingent upon compliance with all applicable notes on the recorded plat.

An access permit must be granted by the Planning and Community Development Engineering Division prior to the establishment of any driveway onto a County Road.

Diversion or blockage of any drainageway is not permitted without the approval of the Planning and Community Development Engineering Division.

Any approval given by El Paso County does not obviate the need to comply with applicable Federal, State or Local laws and/or regulations.



512

shop
40x56

129

117

APPROVED **DENIED**
 BY DD DATE 2-25-20
 FOR 804 sq ft Deck
 NOTES _____

EL PASO COUNTY
PLANNING AND COMMUNITY DEVELOPMENT

BESQCP Not Required
by DD on 2-25-20