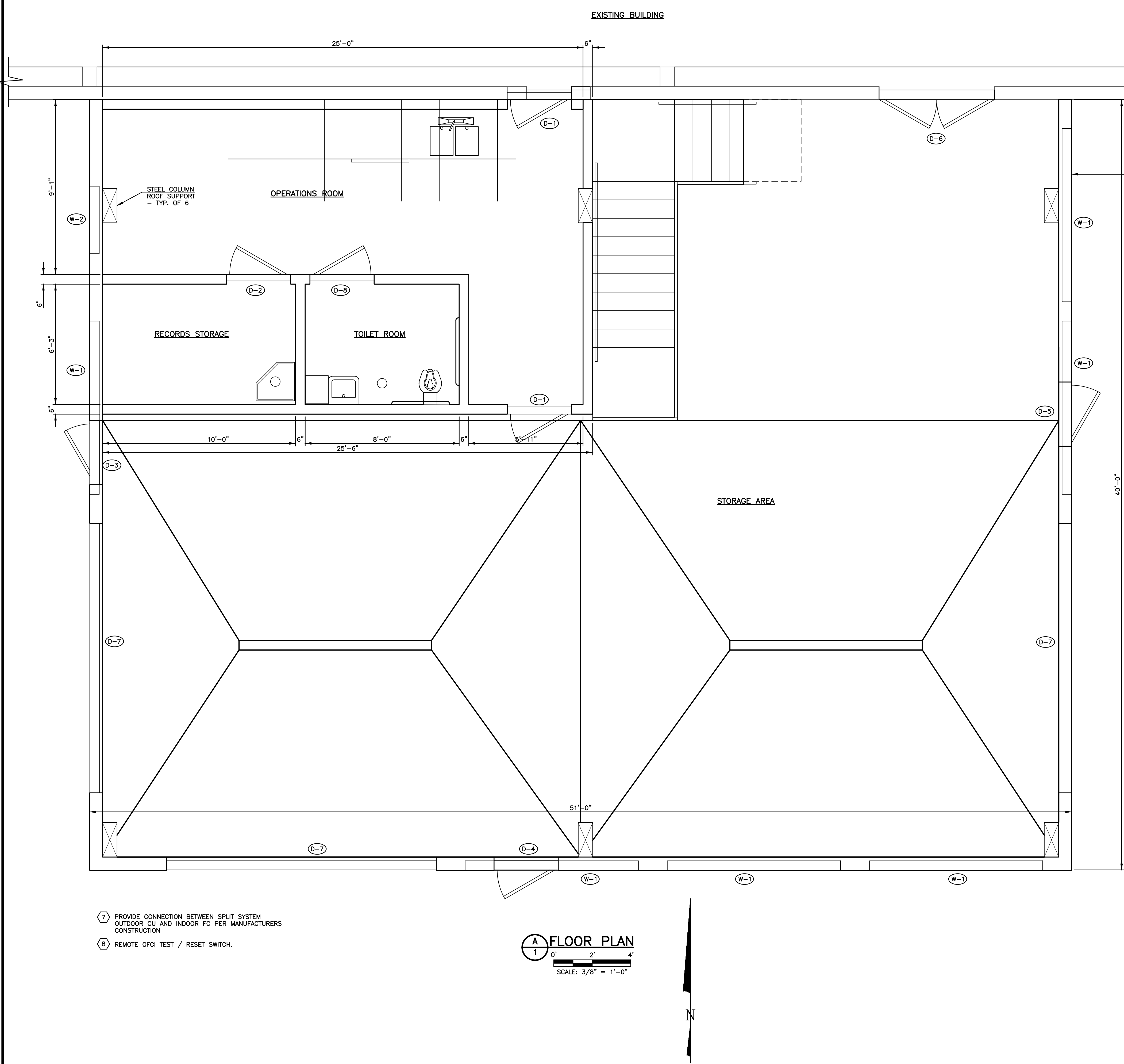
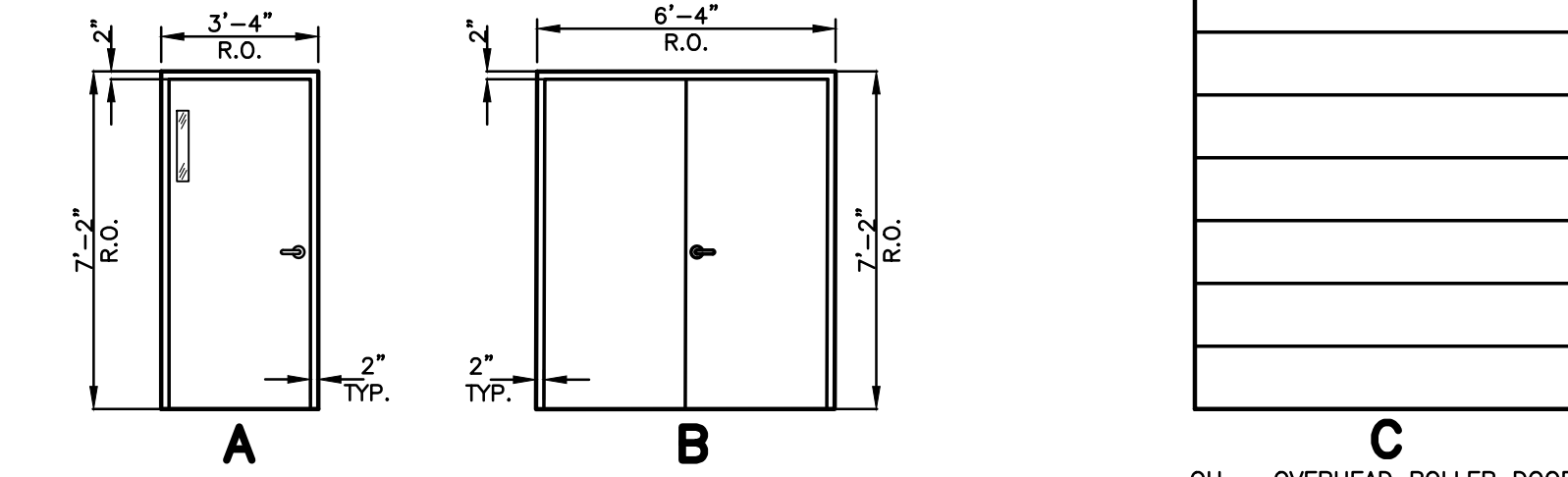


G:\SECURITY\2023-05\116\006\2023-05\2006.dwg, Arch Floor Plan Schedules and Finishes, 11/19/2025 5:04:17 PM, ac, AutoCAD PDF (General Documentation) pcd, 1:1



FURNISHINGS AND EQUIPMENT SCHEDULE		
ITEM	DESCRIPTION	REMARKS
1	BASE CABINET WITH WALL HUNG CABINETS w/SHELVES	48" WIDE, 36" HIGH, 24" D
2	BASE SINK CABINET	36" WIDE, 36" HIGH, 24" D
3	BASE CABINET OPEN FOR MINI REFRIGERATOR	24" WIDE, 36" HIGH, 24" D



DOOR SCHEDULE							
DOOR	LOCATION	DOOR		HARDWARE PACKAGE	SWING	TYPE	
		SIZE	MATERIAL				
D1	OPERATIONS ROOM	3'-0"x7'-0"	HM	A	RHR	A	NO LITE
D2	OPERATIONS ROOM	3'-0"x7'-0"	HM	A	LHR	A	NO LITE
D3	STORAGE AREA	3'-0"x7'-0"	HM	A	RHR	A	3"x18" LITE
D4	STORAGE AREA	3'-0"x7'-0"	HM	A	RHR	A	3"x18" LITE
D5	STORAGE AREA	3'-0"x7'-0"	HM	A	LHR	A	3"x18" LITE
D6	STORAGE AREA	6'-0"x7'-0"	HM	A	RHR	B	3"x18" LITE AT ACTIVE LEAF
D7	STORAGE AREA	14'-0"Wx15'-0"H	-	-	-	C	
D8	TOILET ROOM	3'-0"x7'-0"	HM	B	RHR	A	NO LITE

ROOM FINISH SCHEDULE						
ROOM	FLOOR		WALLS	CEILING		REMARKS
	CONCRETE, STEEL TROWEL FINISH, SEALED	VINYL COMPOSITE TILE (VCT)		TWO (2) LAYERS TYPE X GWB, FIRE TAPED, TEXTURED, PAINTED	VINYL FACED, EXPOSED INSULATION BATTS & PAINTED PURLINS & FRAMES	
TOILET ROOM	X		X	X		
RECORDS STORAGE	X		X	X		
OPERATIONS ROOM	X		X	X		
STORAGE AREA	X	X	X		X	

WINDOW SCHEDULE				
TAG	WIDTH	HEIGHT	TYPE	COMMENT
W-1	9'-0"	1'-6"	FIXED	WIRE GLAZING
W-2	3'-6"	2'-6"	AWNING	WIRE GLAZING

- PROVIDE EXTERIOR WINDOWS WITH 8" HM FRAME ROUGH OPENING AND FLASHING PER PEMB MANUFACTURER.
- LOCATION OF W-2 TO BE ADJUSTED AFTER PEMB SHOP SUBMITTALS ARE RECEIVED AND ACCEPTED.

SCALE VERIFICATION

BAR IS ONE INCH
ON ORIGINAL DRAWING

IF NOT ONE INCH ON THIS SHEET
ADJUST SCALES ACCORDINGLY

THIS DRAWING IS THE
PROPERTY OF GMS, INC., AND
IS NOT TO BE RE-PRODUCED,
MODIFIED OR USED FOR ANY
OTHER PROJECT WITHOUT THE
WRITTEN PERMISSION OF GMS,
OF THIS PROJECT. BY
AGREEMENT WITH THIS
COMPANY.

© 2025 GMS, INC.

REVISIONS		NO.	DATE	DESCRIPTION
DESIGNED	CHECKED			

ARCHITECTURAL FLOOR PLAN,
SCHEDULES AND FINISHES
WATER TREATMENT PLANT BUILDING ADDITION
SECURITY WATER DISTRICT

GMS
INC.
CONSULTING ENGINEERS

611 N. WEBER, SUITE 300
COLORADO SPRINGS, COLORADO 80903
719-475-2935

DRAWN	DESIGNED	CHECKED	DATE	PROJECT NO.	GMS FILE NO.
			OCTOBER 2024	2023-053.116	3803

SHEET

6
OF
16