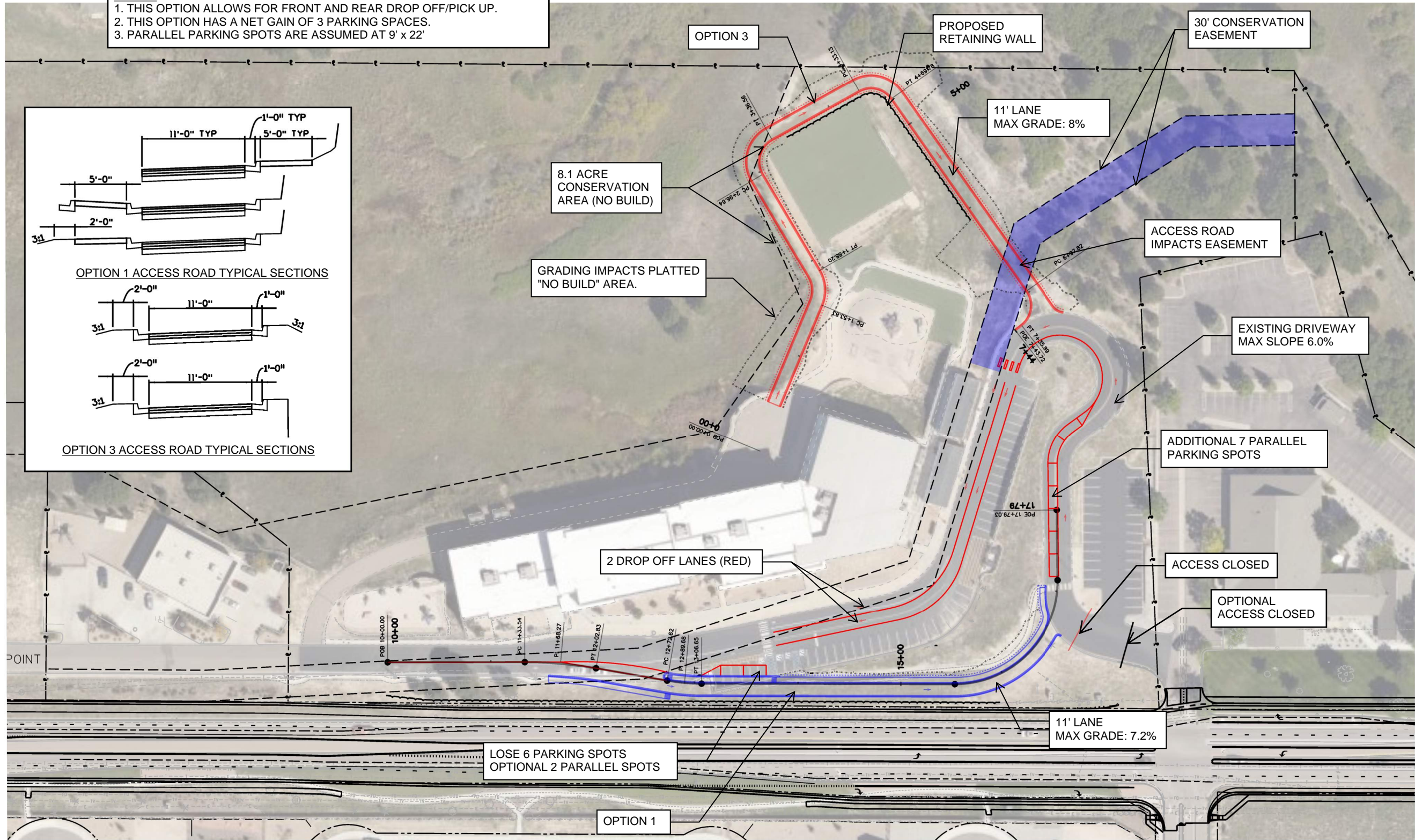
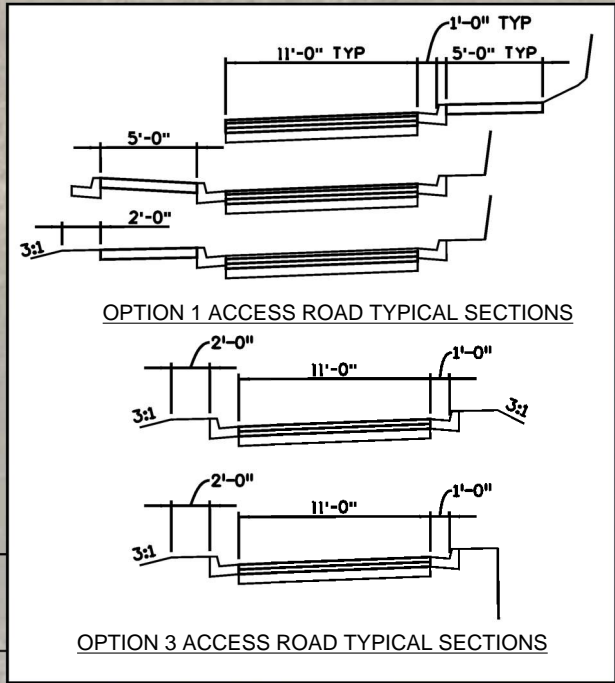


C:\BESLEY\11:01:26 AM pw:\PWAPPD\MA001\NorthCentral_Omaha\Documents\200716\00000000000260510\6.0_CAD_BITMAPS\2_Work_In_Progress\Design\Working\C_Besley\School Access 1 & 3 Overall.dgn

NOTES:
1. THIS OPTION ALLOWS FOR FRONT AND REAR DROP OFF/PICK UP.
2. THIS OPTION HAS A NET GAIN OF 3 PARKING SPACES.
3. PARALLEL PARKING SPOTS ARE ASSUMED AT 9' x 22'



FOR REVIEW - NOT FOR CONSTRUCTION

Print Date: 3/29/2021
File Name: School Access 1 & 3 Overall.dgn
Horiz. Scale: 1:100 Vert. Scale: None

HR 5555 TECH CENTER DRIVE, SUITE 310
COLORADO SPRINGS, CO 80919 PHONE: 719-272-8800

Sheet Revisions			
Date:	Comments	Init.	

EL PASO COUNTY COLORADO

S.F. Region 02

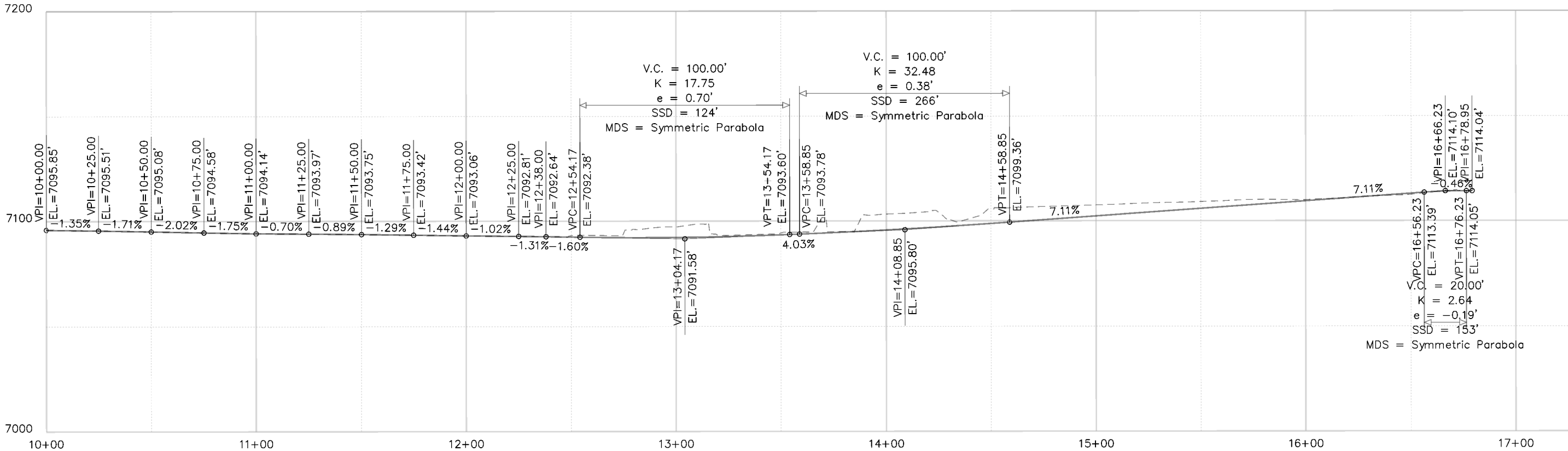
CDOT

As Constructed		SCHOOL OPTIONS 1 & 3 OVERALL				Project No./Code	
No Revisions:						19734	
Revised:		Designer:	Structure Numbers			STA 105A-014	
Void:		Detailer:	Subset Sheets:	of		Sheet Number	

C:\BEASLEY\2:01:20 PM pw:\PWAPPD\MA001\NorthCentral_Dmdha\Documents\200716\000000000260510\6.0_CAD_BIM\6.2_Work_In_Progress\Design\Working\C. Beasley\School Access 1 pnp.dgn



Know what's below.
Call before you dig.



Print Date: 3/26/2021
File Name: School Access 1 pnp.dgn
Horiz. Scale: 1:50 Vert. Scale: None

HR 5555 TECH CENTER DRIVE, SUITE 310
COLORADO SPRINGS, CO 80919 PHONE: 719-272-8800

Sheet Revisions		
Date:	Comments	Init.

EL PASO COUNTY COLORADO

S.F. Region 02

CDOT

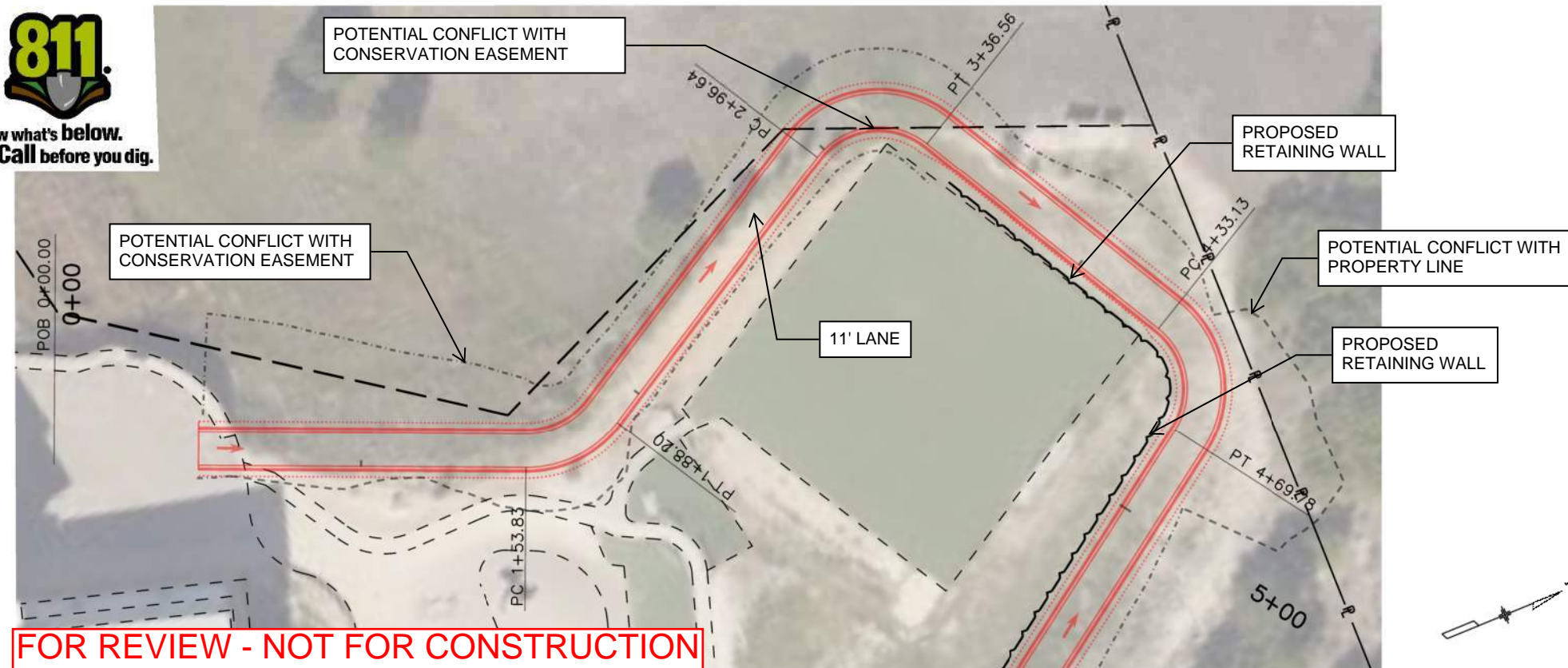
As Constructed
No Revisions:
Revised:
Void:

SCHOOL OPTION 1 PLAN & PROFILE		
Designer:	Structure Numbers	
Detailer:		
Sheet Subset:	Subset Sheets: of	

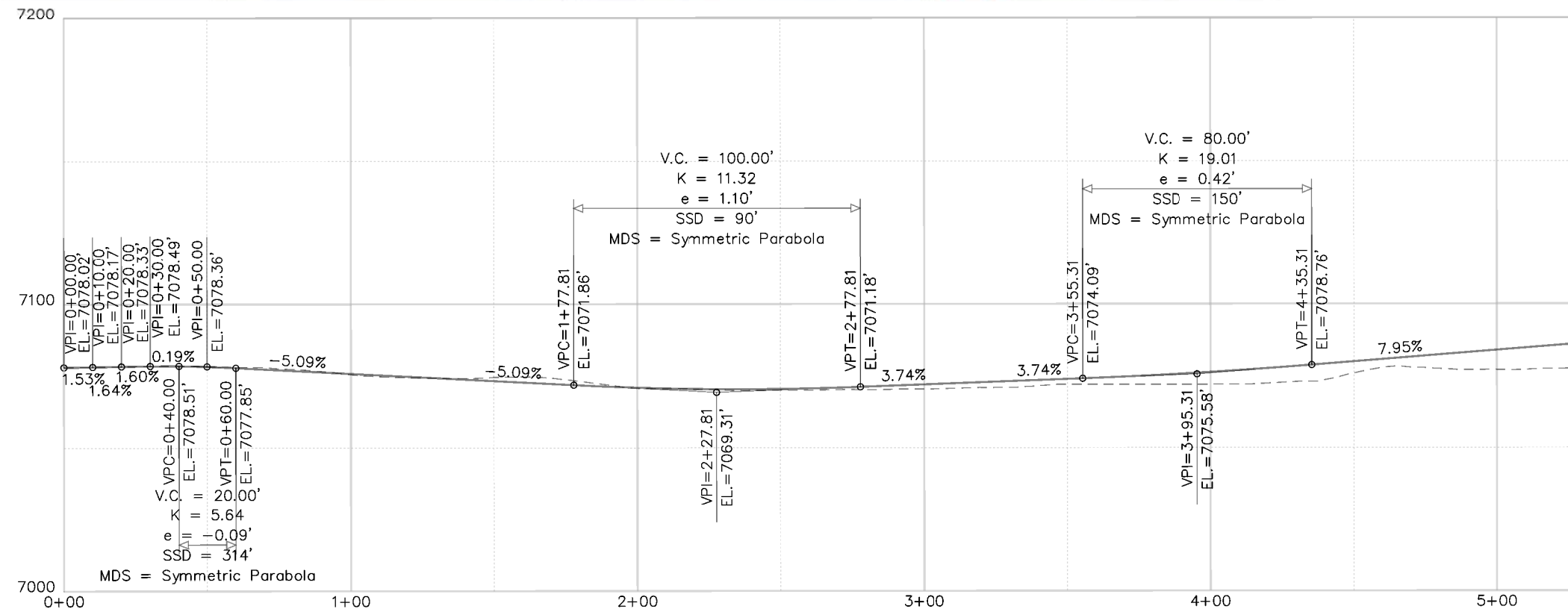
Project No./Code
19734
STA 105A-014
Sheet Number



Know what's below.
Call before you dig.




FOR REVIEW - NOT FOR CONSTRUCTION



Print Date: 3/26/2021

File Name: School Access 3 pnp.dgn

Horiz. Scale: 1:50 Vert. Scale: None



5555 TECH CENTER DRIVE, SUITE 310
COLORADO SPRINGS, CO 80919 PHONE: 719-272-8800

Sheet Revisions		
Date:	Comments	Init.

EL PASO COUNTY



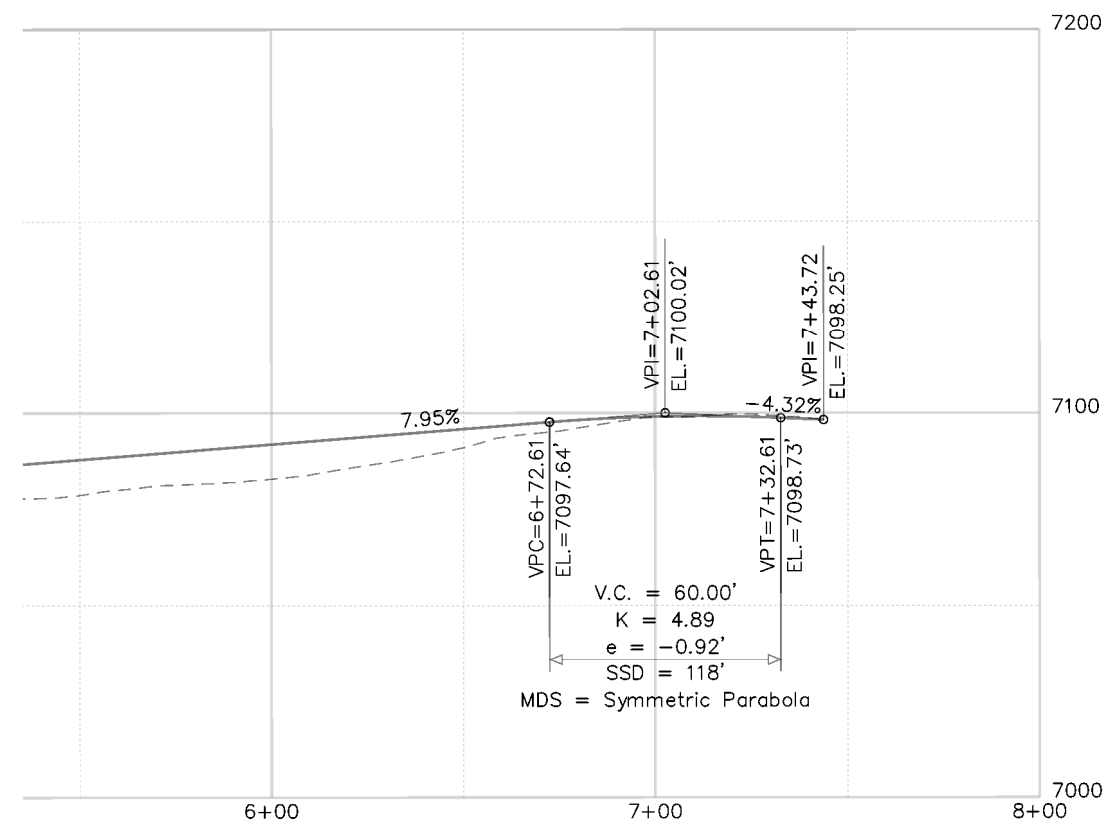
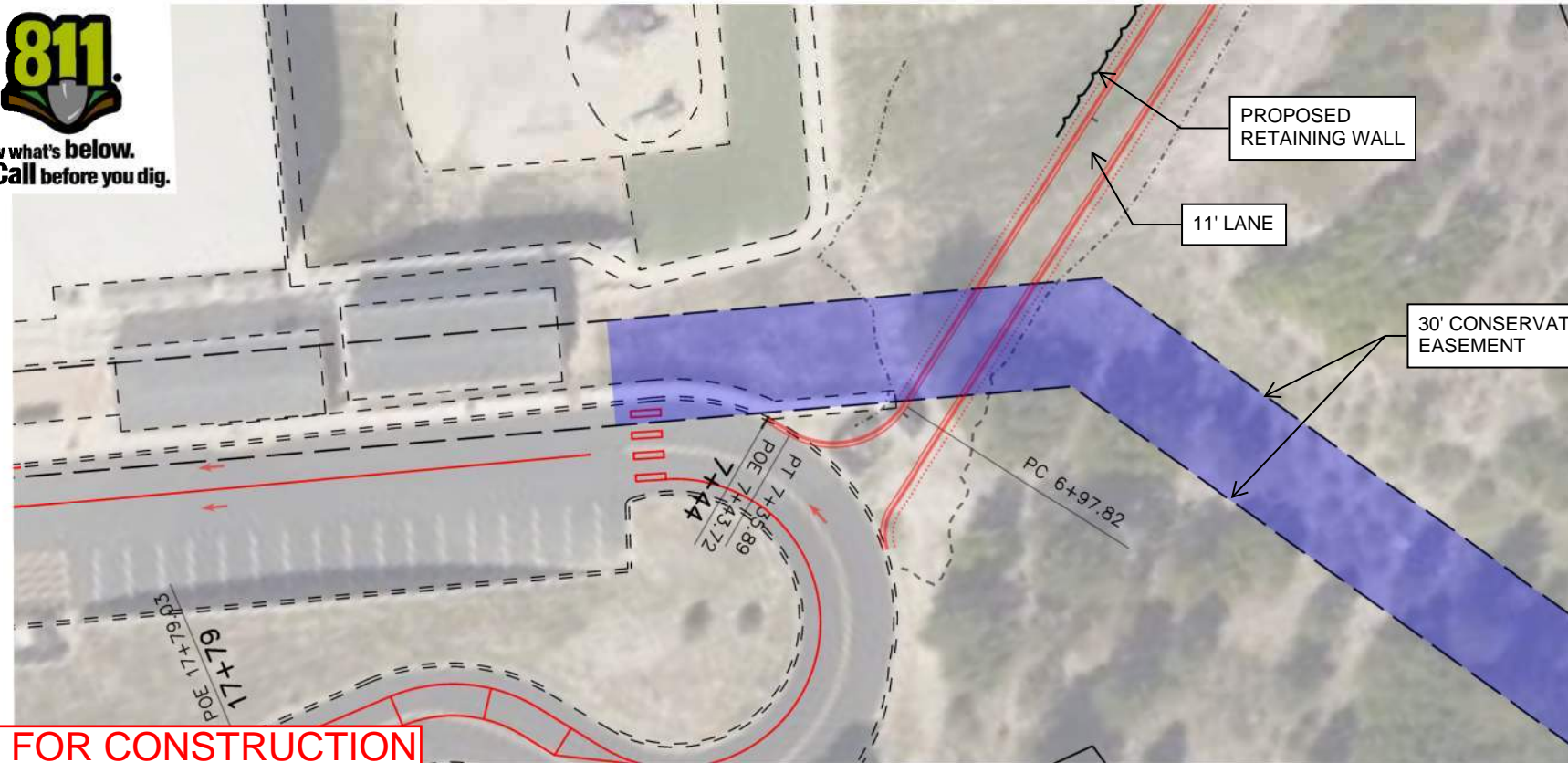
COLORADO



Region 02

S.F.

As Constructed		SCHOOL OPTION 3 PLAN & PROFILE			Project No./Code
No Revisions:					19734
Revised:		Designer:	Structure Numbers		STA 105A-014
Void:		Detailer:			
		Sheet Subset:	Subset Sheets: of		Sheet Number



Print Date: 3/26/2021		<div>0000</div>	Sheet Revisions			<div><div>EL PASO COUNTY</div><div>COLORADO</div><div>S.F.</div></div> <div><div>CDOT</div><div>Region 02</div></div>	As Constructed		SCHOOL OPTION 3 PLAN & PROFILE				Project No./Code	
File Name: SchoolAccess 4 .pnp.dgn			Date:	Comments	Init.		No Revisions:		Designer: Structure Detailer: Numbers				19734	
Horiz. Scale: 1:50 Vert. Scale: None							Revised:						STA 105A-014	
<div>5555 TECH CENTER DRIVE, SUITE 310 COLORADO SPRINGS, CO 80919 PHONE: 719-272-8800</div>							Void:		Sheet Subset:		Subset Sheets: of		Sheet Number	