

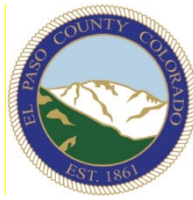


2315 Briargate Pkwy #150
Colorado Springs, CO 80920
719-531-0001

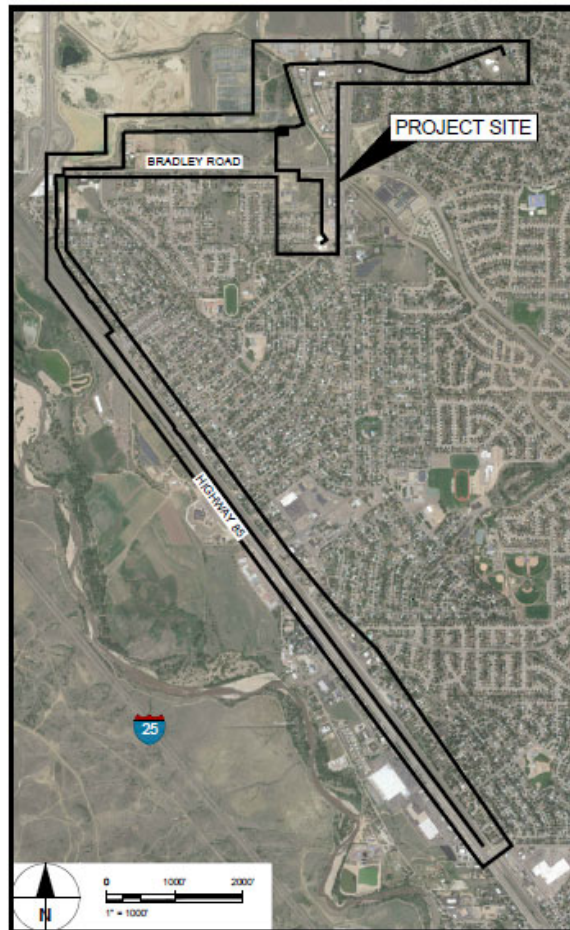
May 1, 2019

Security PFOS / PFOAS Drinking Water Mitigation System Drainage Letter

Prepared for:
El Paso County, CO



URS Group, Inc. Project #: 60589841





DRAINAGE CERTIFICATION:

Engineer's Statement

The attached drainage plan and report were prepared under my direction and supervision and are correct to the best of my knowledge and belief. Said drainage report has been prepared according to the criteria established by the County for drainage reports and said report is in conformity with the master plan of the drainage basin. I accept responsibility for any liability caused by an negligent acts, errors, or omissions on my part in preparing this report.

Laura L. Kindt, P.E.
State of Colorado
No. 46481

Date

Developer's Statement

I, the developer have read and will comply with all of the requirements specified in this drainage report and plan.

Business Name

By: _____
Title: _____
Address: _____

El Paso County Statement

Filed in accordance with Section 51.1 of the El Paso Land Development Code, as amended.

Director of Public Works
Conditions:

Date

1.0 INTRODUCTION

The Security PFOS/PFOAS Drinking Water Mitigation System Project (Project), located in Security, El Paso County, seeks to provide a new water service line and raw water tank. The project is bound by Fontaine Boulevard to the south, US Hwy 85 to the west, Clearview Drive / Yucatan Drive to the north, and Powers Boulevard to the east. The raw water tank will be located southwest of the intersection of Yucatan Drive and Hancock Expressway. The total construction site area is approximately 32.9 acres, with 31.95 acres being subsurface utility installation. The raw water tank site comprises the remaining 0.95 acres of construction area. The construction activities will be limited to El Paso County properties.

As part of the Project, AECOM has been tasked with preparing Stormwater Management Plans (SWMP) to provide construction BMPs associated with the pipe installation and facility construction. Existing drainage facilities have not been analyzed as part of this project, and no new drainage infrastructure will be constructed as part of the treatment plant facility. Proposed SWMP plans are attached.

2.0 DRAINAGE CHARACTERISTICS

Surface runoff within the project site generally flows from north and northeast to south and southwest. Runoff in the north portion of the project site discharges into Security Creek and ultimately into Fountain Creek.

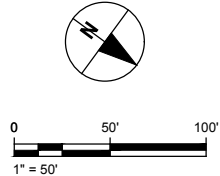
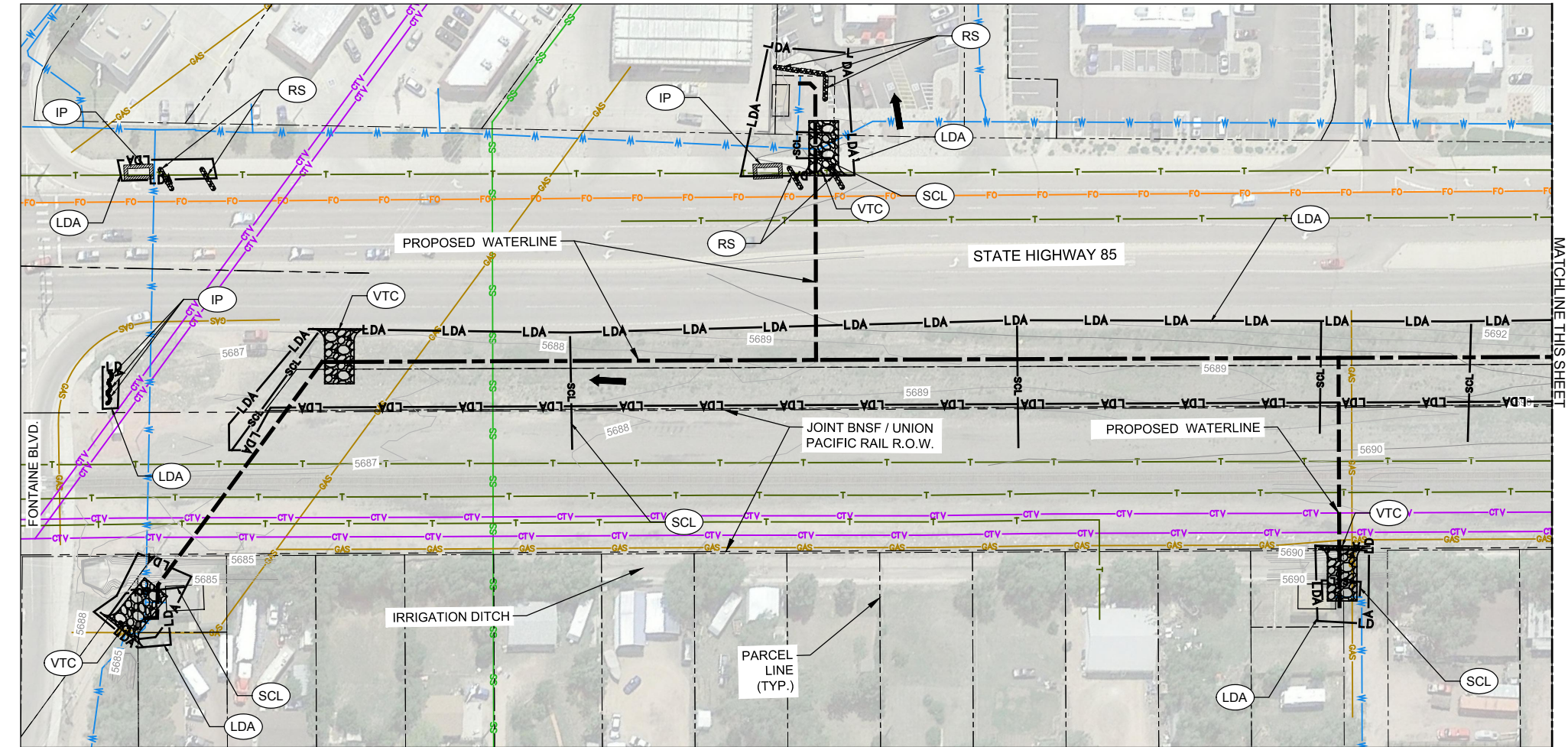
The existing drainage patterns will be maintained as part of the proposed Project improvements.

3.0 WATER QUALITY

The Project is considered to be development with less than 1 acre of disturbance beyond the roadway driving surface. Per the El Paso County Municipal Separate Storm Sewer System (MS4) Permit, the disturbance from construction of subsurface utilities is exempt from inclusion on the total disturbance for water quality; as a result, the total disturbance of the project remains less than 1 acre. Additionally, the Project site is not part of a larger common plan of development or sale; as a result, no water quality improvements will be required.

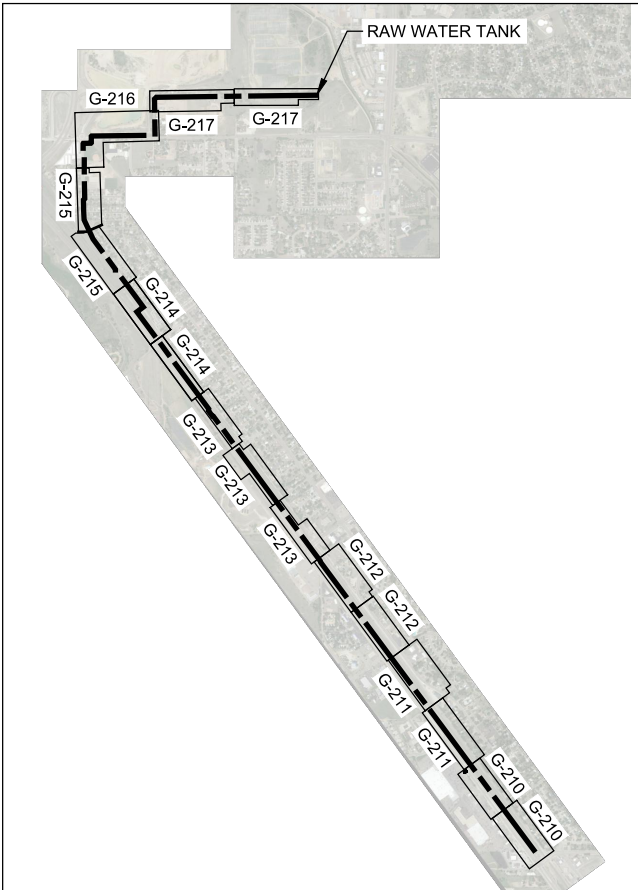
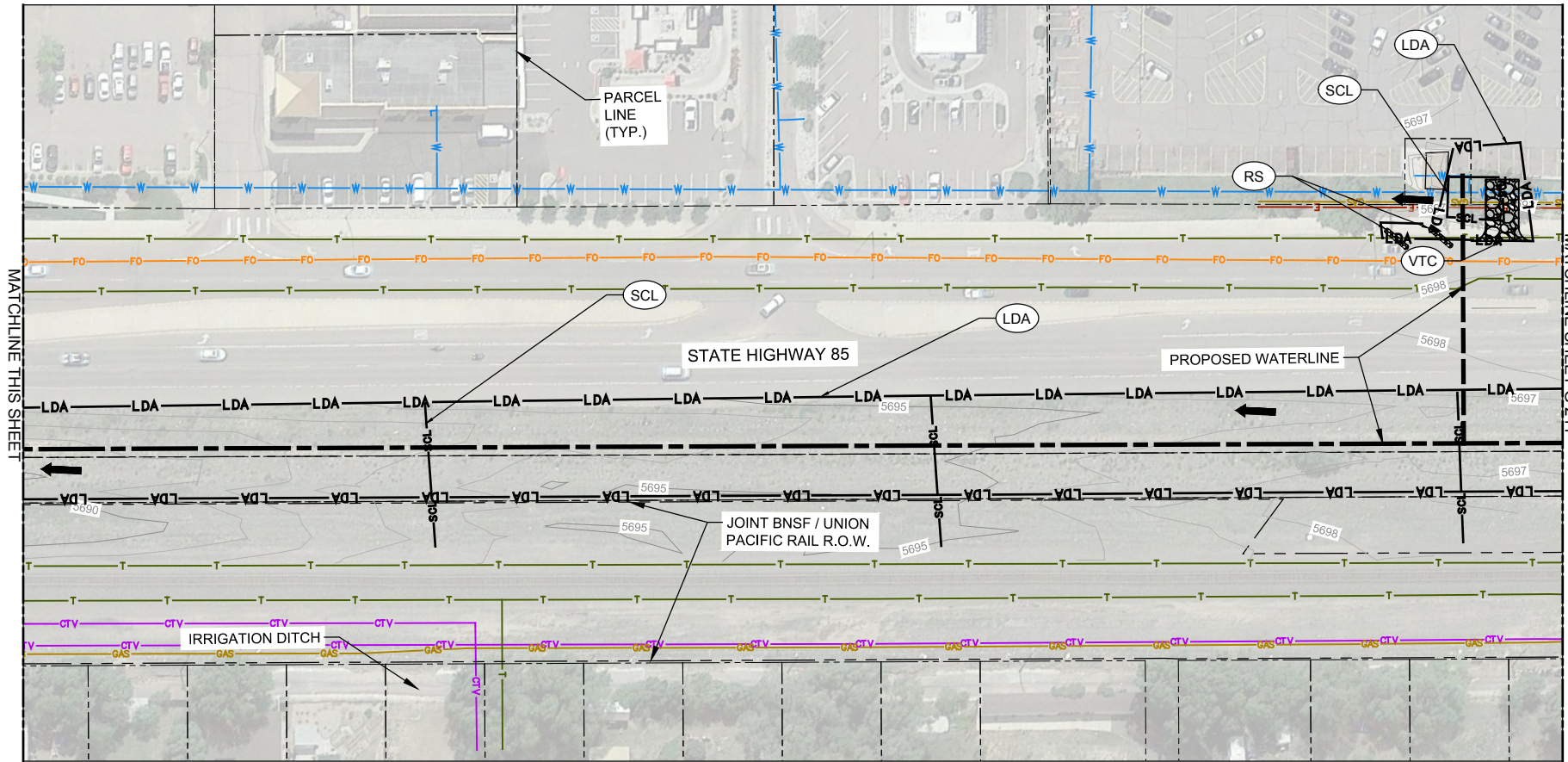
Attachments: Stormwater Management Plan

VERIFY PRINTED
SCALES
BAR IS ONE INCH ON
ORIGINAL DRAWING
0 1"
IF NOT ONE INCH ON
THIS SHEET ADJUST
SCALE ACCORDINGLY



NOTES:

1. THESE PLANS ARE TO BE USED FOR LOCATION OF PROPOSED STORMWATER MANAGEMENT CONTROL MEASURES ONLY.
2. BMPS ARE NOT DRAWN TO SCALE AND PLACEMENT IS APPROXIMATE.



URS

URS Group, Inc.
An AECOM Company

PROJECT

**PFOs / PFOA DRINKING
WATER MITIGATION
SYSTEM**

**Security Water District
(SWD)**

CLIENT

USACE Omaha District
1616 Capital Ave.
Omaha, NE 68102

CONSULTANT

URS Group, Inc.
12120 Shamrock Plaza
Omaha, NE 68154
T +1 (402) 334 8181. F +1 (402) 334 1984

ISSUE/REVISION

B	04/24/19	REV 1 SWMP
A	03/27/19	ISSUED FOR SWMP
I/R	DATE	DESCRIPTION

PROJECT NUMBER

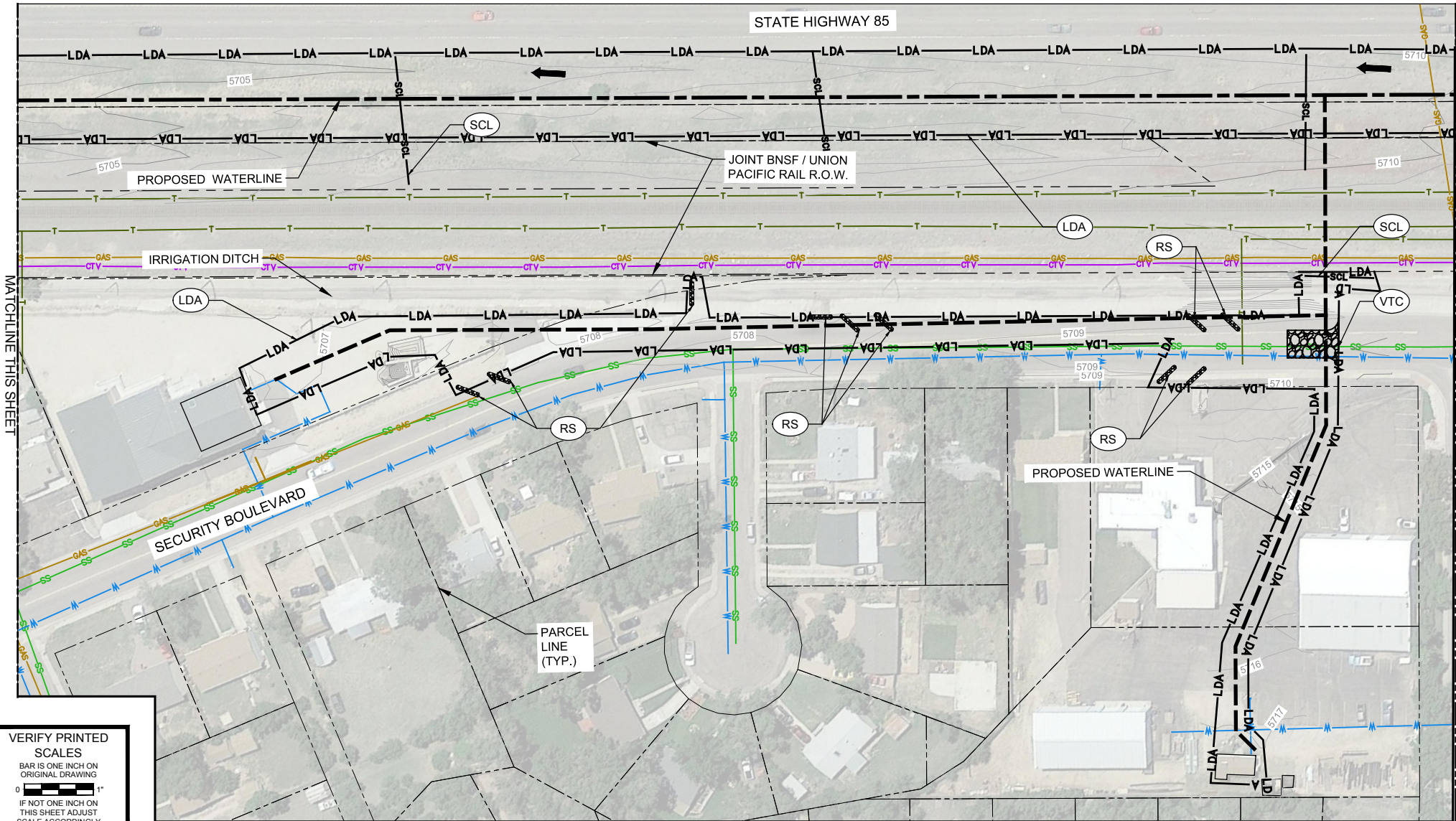
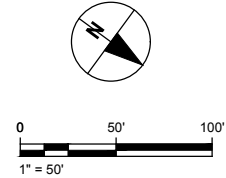
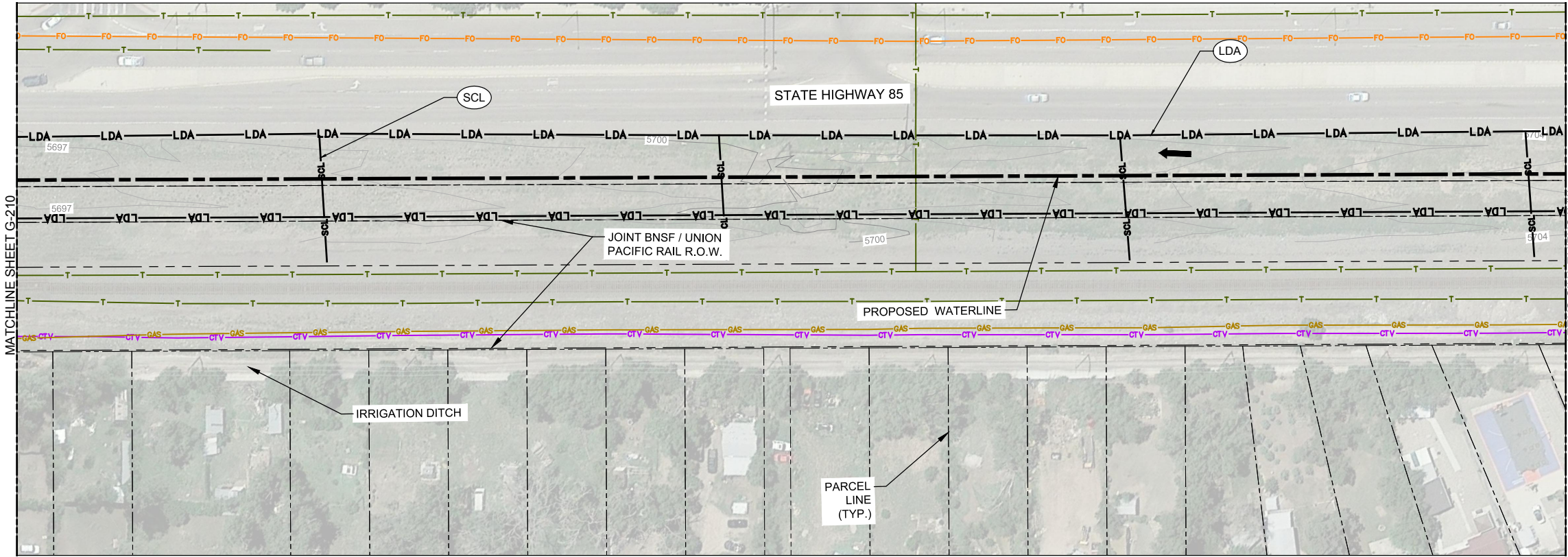
Project Number: 60589841

SHEET TITLE

**STORM WATER MANAGEMENT
PLAN SHEET 1**

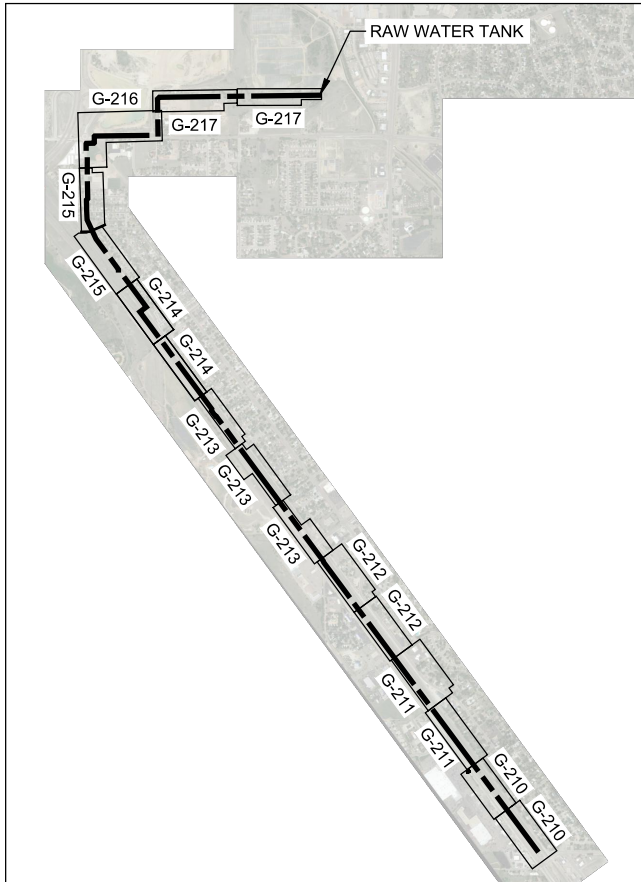
SHEET NUMBER

G-210



NOTES:

1. THESE PLANS ARE TO BE USED FOR LOCATION OF PROPOSED STORMWATER MANAGEMENT CONTROL MEASURES ONLY.
2. BMPS ARE NOT DRAWN TO SCALE AND PLACEMENT IS APPROXIMATE.



VERIFY PRINTED
SCALES
BAR IS ONE INCH ON
ORIGINAL DRAWING
0 1"
IF NOT ONE INCH ON
THIS SHEET ADJUST
SCALE ACCORDINGLY

URS

URS Group, Inc.
An AECOM Company

PROJECT

**PFOS / PFOA DRINKING
WATER MITIGATION
SYSTEM**

**Security Water District
(SWD)**

CLIENT

USACE Omaha District

1616 Capital Ave.
Omaha, NE 68102

CONSULTANT

URS Group, Inc.
12120 Shamrock Plaza
Omaha, NE 68154
T +1 (402) 334 8181. F +1 (402) 334 1984

ISSUE/REVISION

B	04/24/19	REV 1 SWMP
A	03/27/19	ISSUED FOR SWMP
I/R	DATE	DESCRIPTION

PROJECT NUMBER

Project Number: 60589841

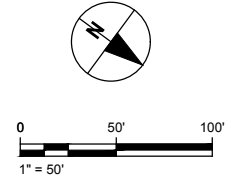
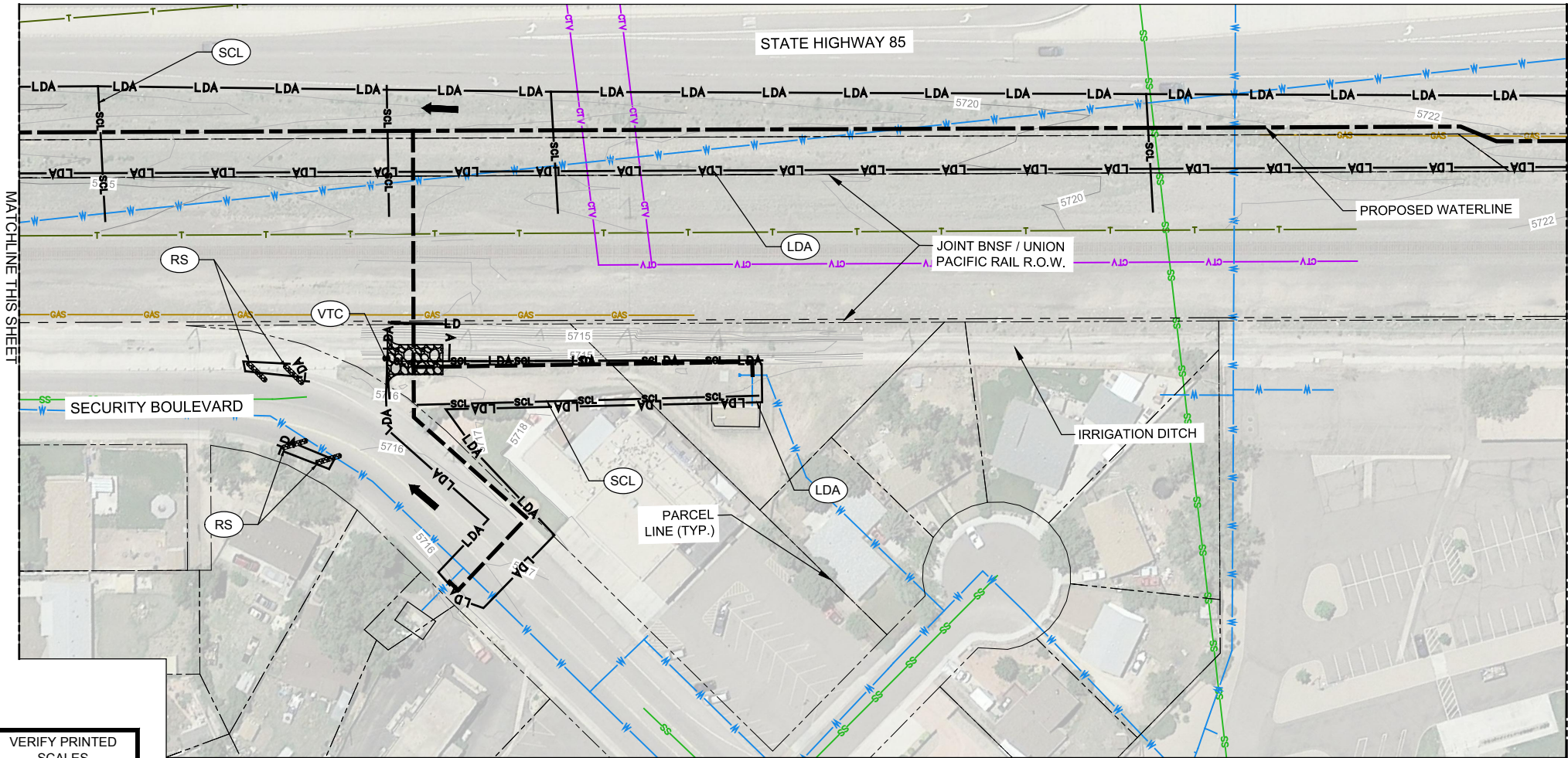
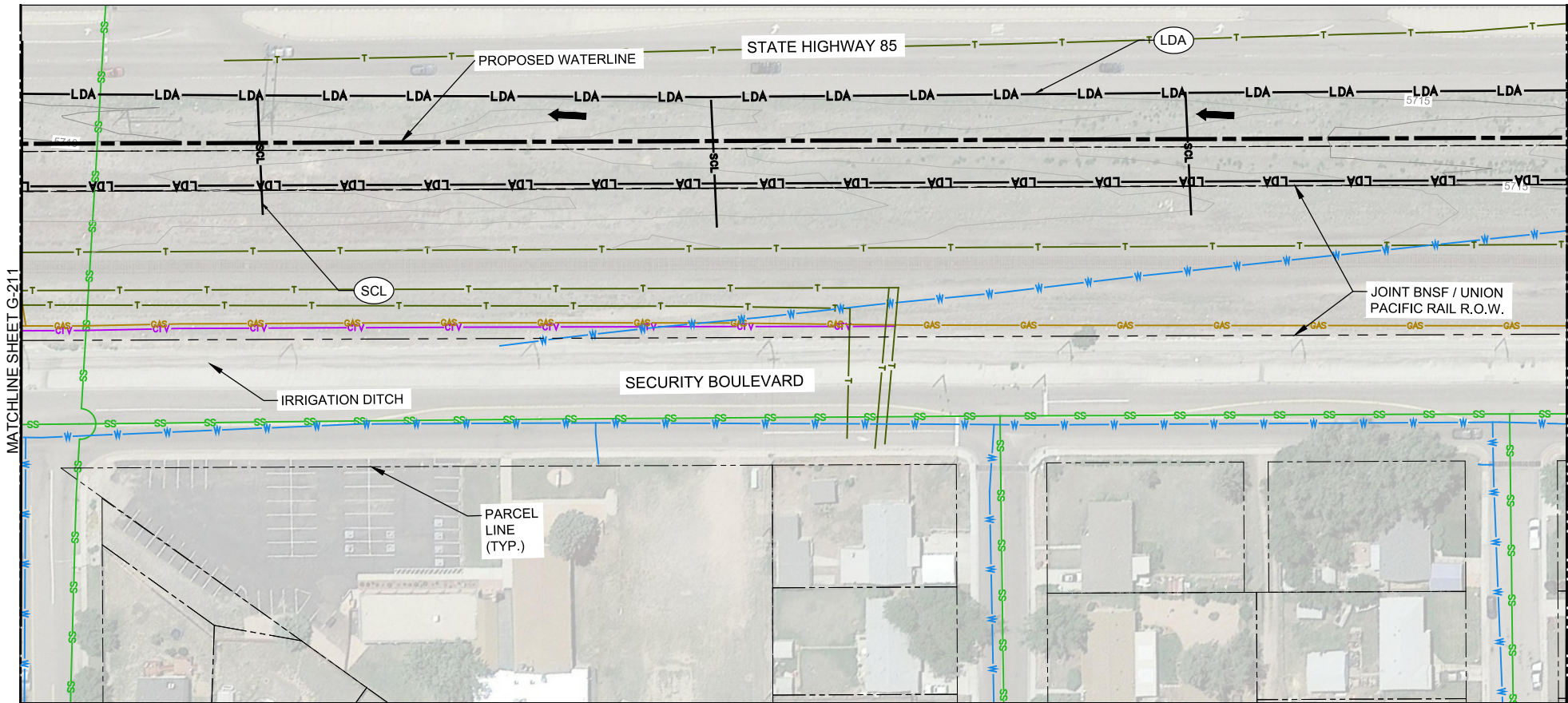
SHEET TITLE

**STORM WATER MANAGEMENT
PLAN SHEET 2**

SHEET NUMBER

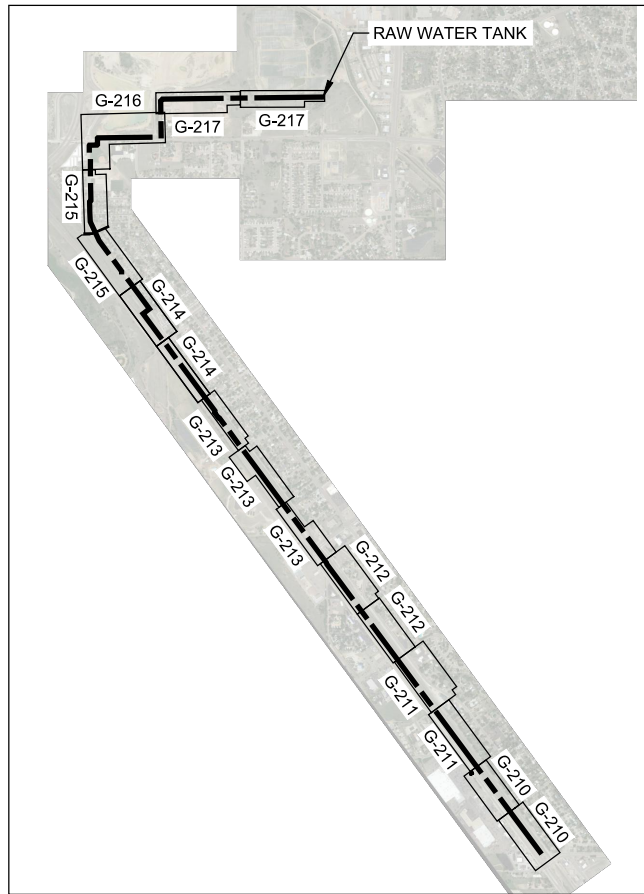
G-211

ANSI D 22" x 34"



NOTES:

1. THESE PLANS ARE TO BE USED FOR LOCATION OF PROPOSED STORMWATER MANAGEMENT CONTROL MEASURES ONLY.
2. BMPS ARE NOT DRAWN TO SCALE AND PLACEMENT IS APPROXIMATE.



URS

URS Group, Inc.
An AECOM Company

PROJECT

**PFOs / PFOA DRINKING
WATER MITIGATION
SYSTEM**

**Security Water District
(SWD)**

CLIENT

USACE Omaha District

1616 Capital Ave.
Omaha, NE 68102

CONSULTANT

URS Group, Inc.
12120 Shamrock Plaza
Omaha, NE 68154
T +1 (402) 334 8181. F +1 (402) 334 1984

ISSUE/REVISION

B	04/24/19	REV 1 SWMP
A	03/27/19	ISSUED FOR SWMP
I/R	DATE	DESCRIPTION

PROJECT NUMBER

Project Number: 60589841

SHEET TITLE

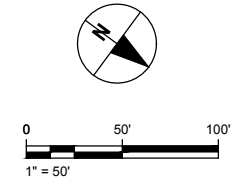
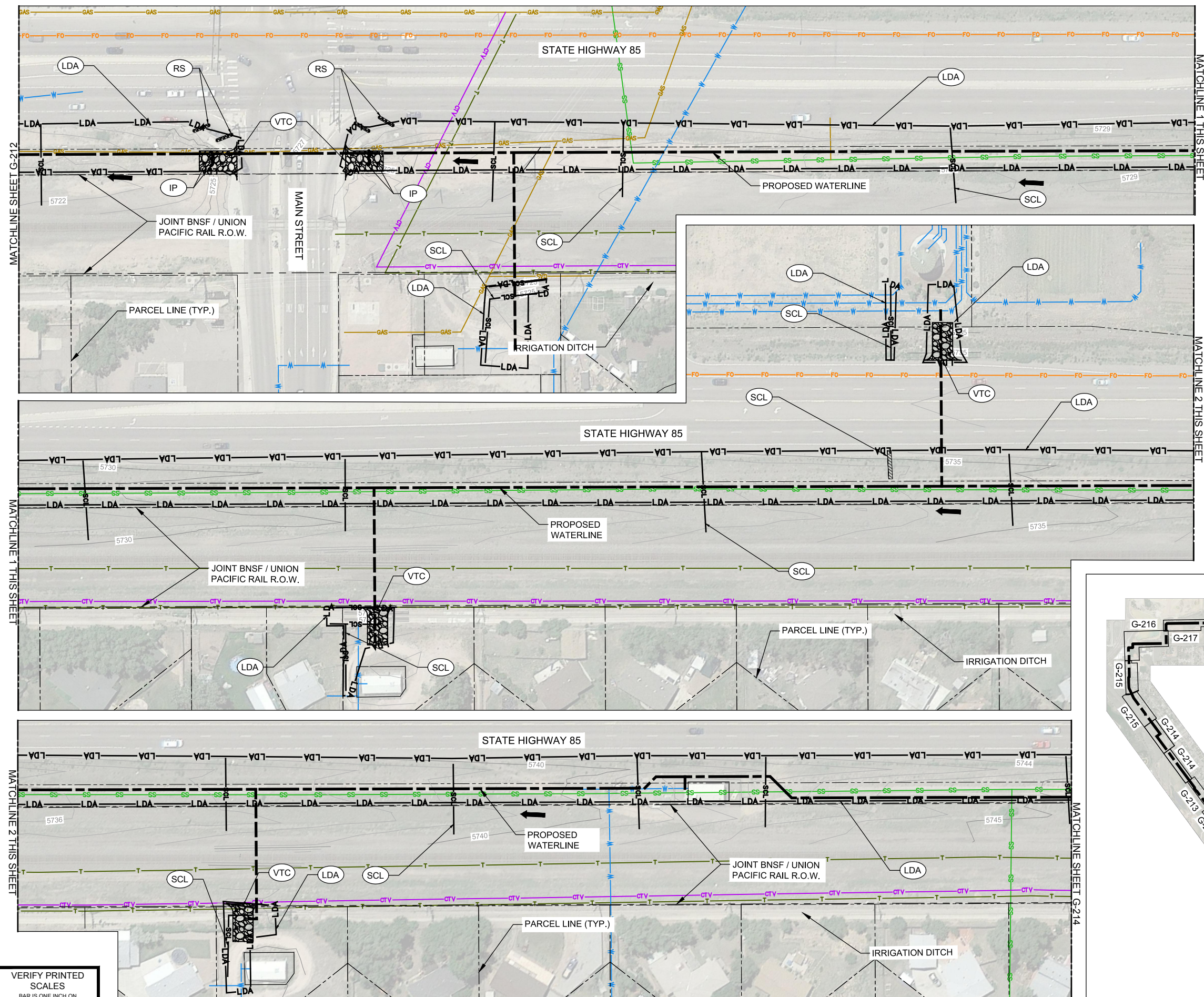
STORM WATER MANAGEMENT
PLAN SHEET 3

SHEET NUMBER

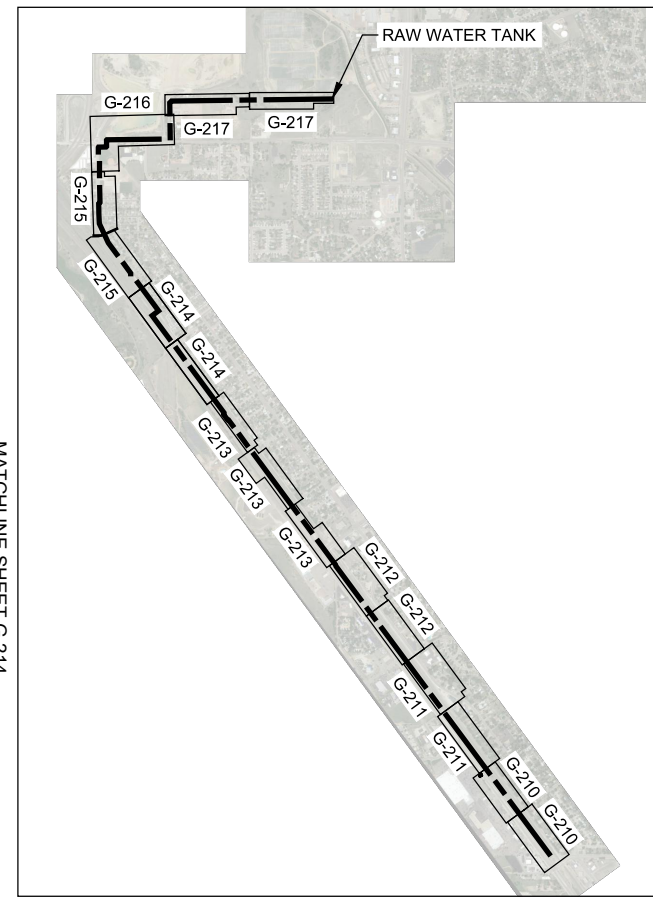
G-212

VERIFY PRINTED
SCALES
BAR IS ONE INCH ON
ORIGINAL DRAWING
0 1"
IF NOT ONE INCH ON
THIS SHEET ADJUST
SCALE ACCORDINGLY

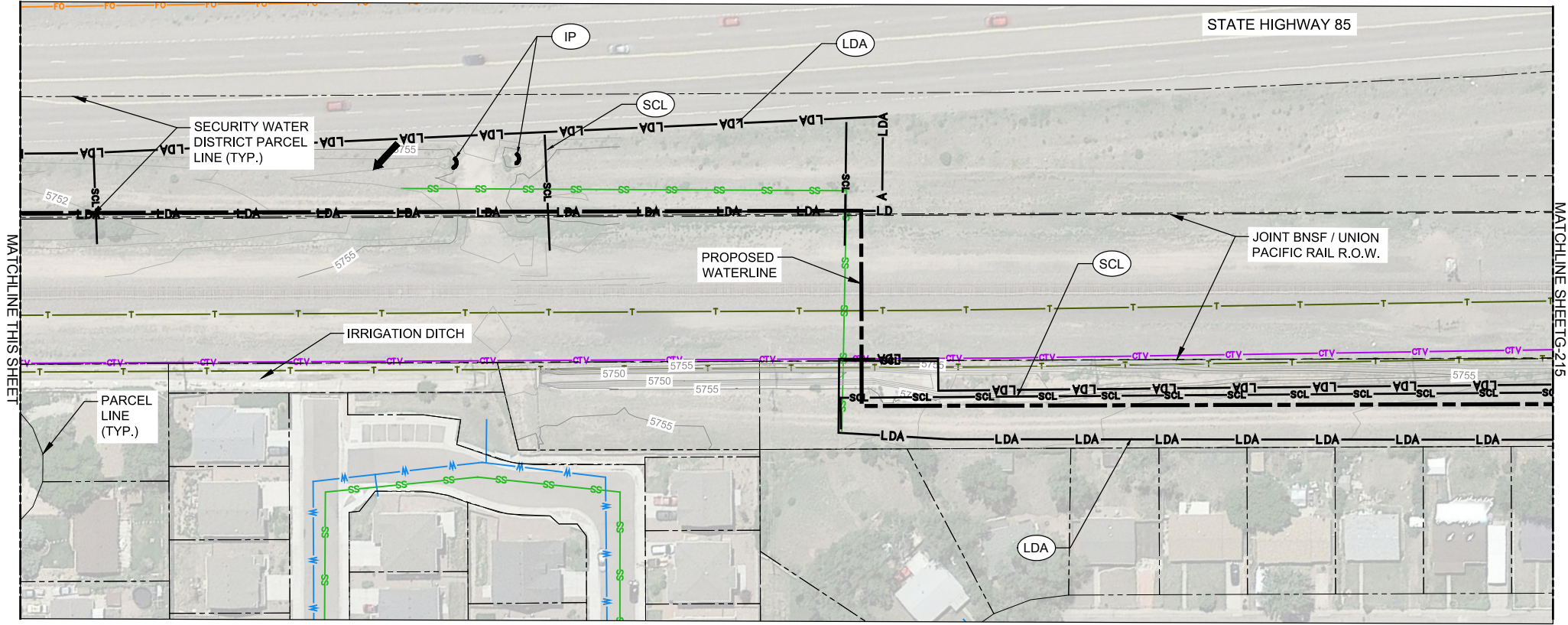
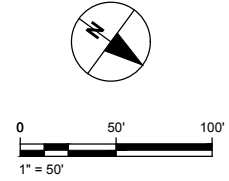
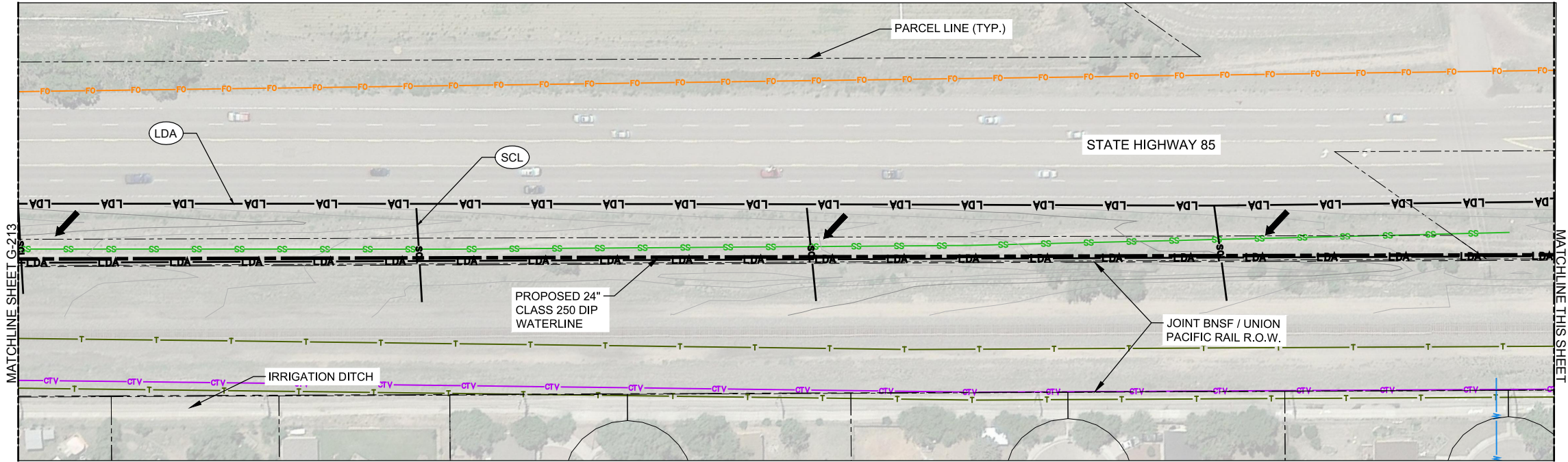
Last saved by: JEREMIAS RODRIGUEZ(2019-04-23) Last Plotted: 2019-04-24
Filename: M:\DCS\PROJECTS\SWTR60589841_PAFB_PFOA\SWMP\CAD\20-SHEETS\G-210 SWMP SHEETS.DWG



1. THESE PLANS ARE TO BE USED FOR LOCATION OF PROPOSED STORMWATER MANAGEMENT CONTROL MEASURES ONLY.
2. BMPS ARE NOT DRAWN TO SCALE AND PLACEMENT IS APPROXIMATE.

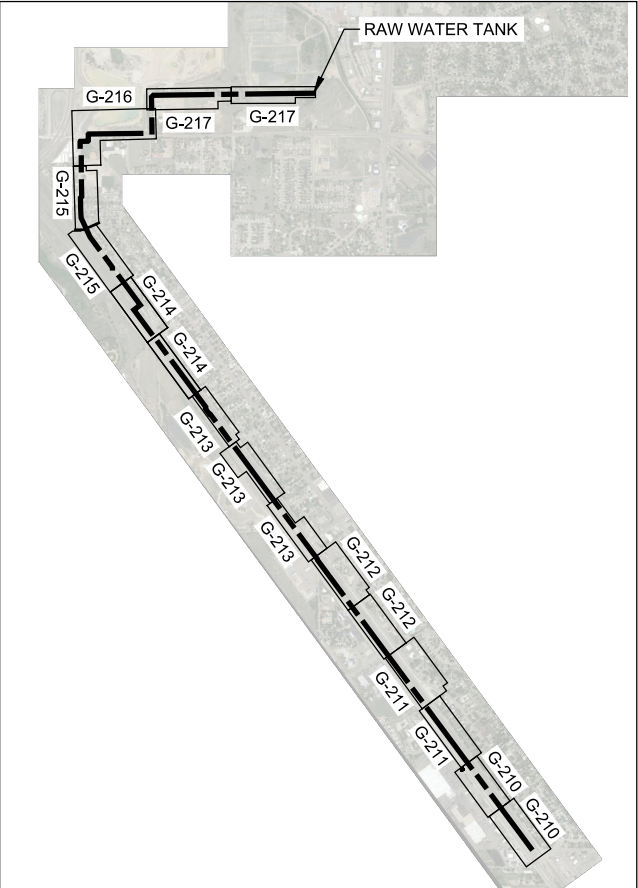


G-213



NOTES:

1. THESE PLANS ARE TO BE USED FOR LOCATION OF PROPOSED STORMWATER MANAGEMENT CONTROL MEASURES ONLY.
2. BMPs ARE NOT DRAWN TO SCALE AND PLACEMENT IS APPROXIMATE.



URS Group, Inc.
An AECOM Company

PROJECT
PFOS / PFOA DRINKING WATER MITIGATION SYSTEM

Security Water District (SWD)

CLIENT
USACE Omaha District
1616 Capital Ave.
Omaha, NE 68102

CONSULTANT
URS Group, Inc.
12120 Shamrock Plaza
Omaha, NE 68154
T +1 (402) 334 8181. F +1 (402) 334 1984

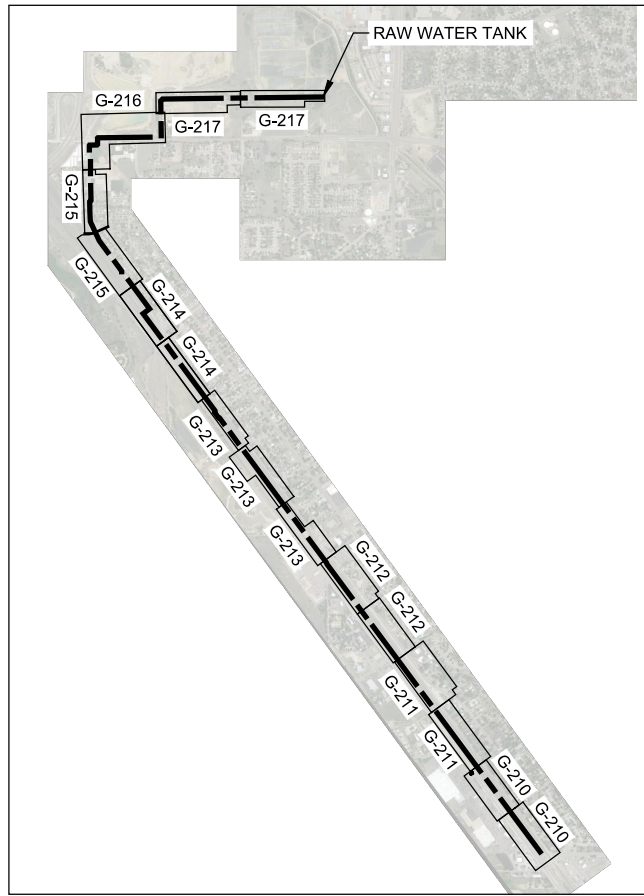
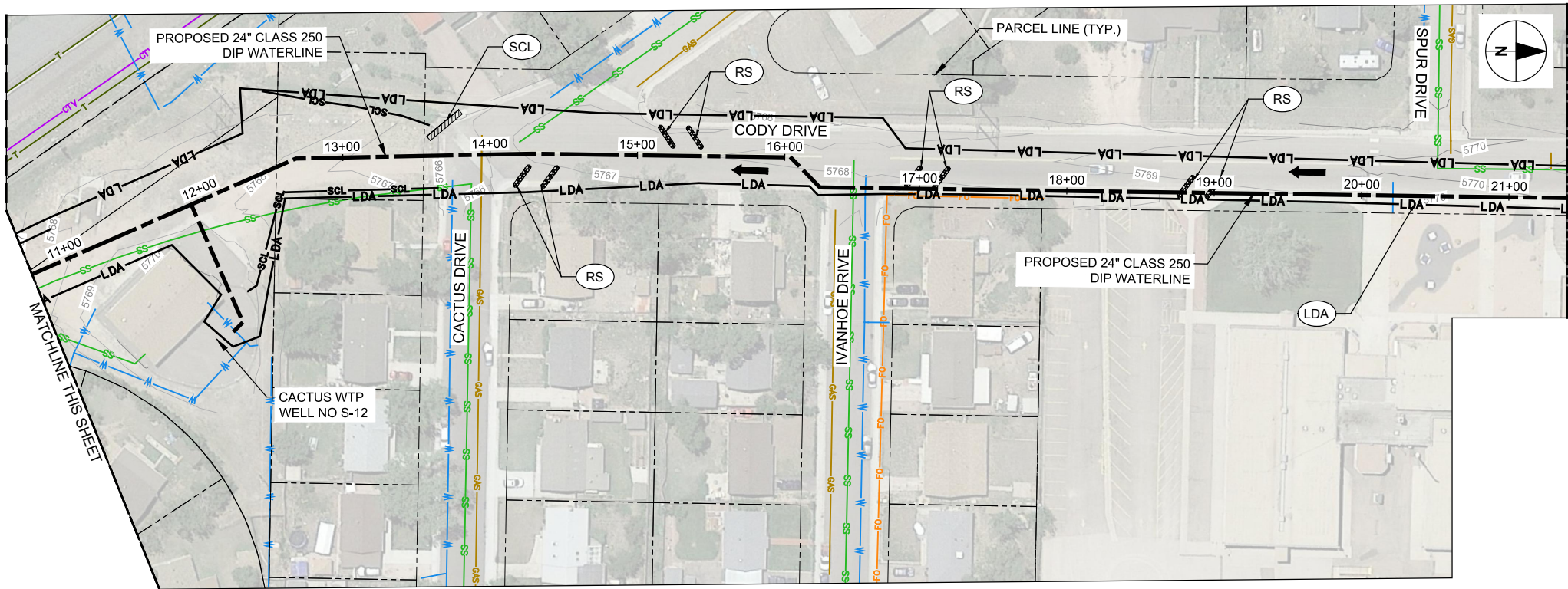
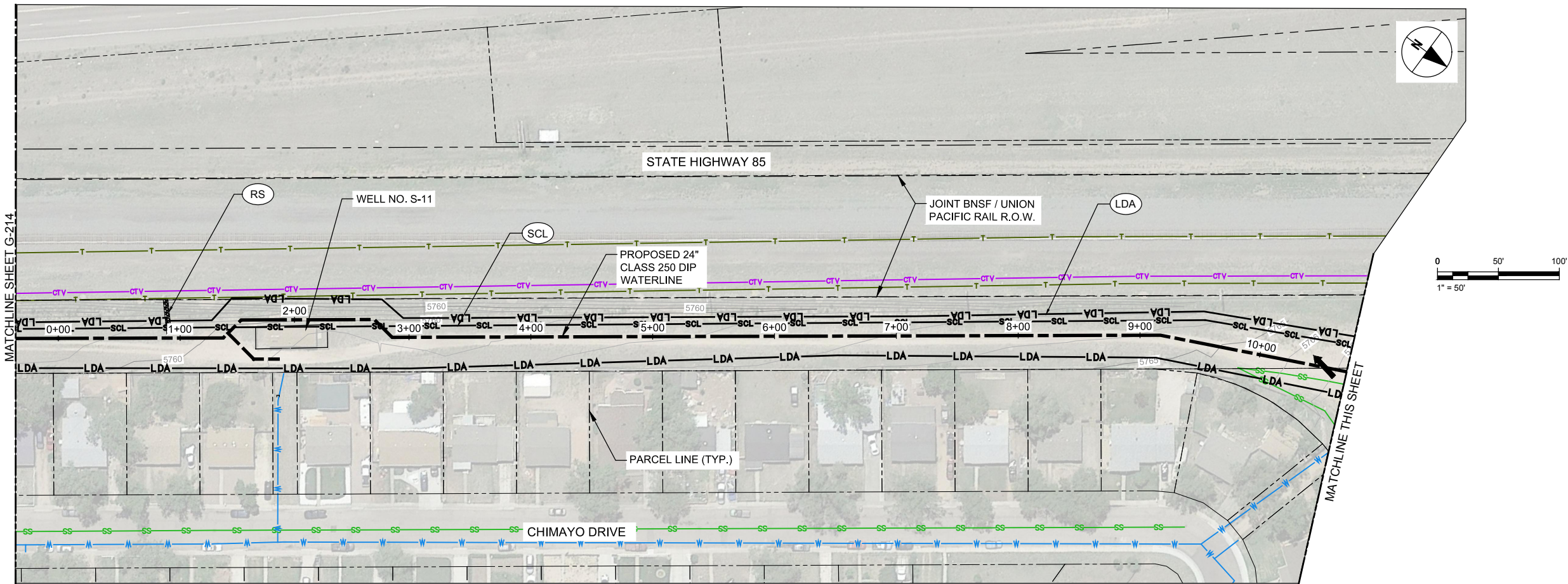
ISSUE/REVISION		
B	04/24/19	REV 1 SWMP
A	03/27/19	ISSUED FOR SWMP
IR	DATE	DESCRIPTION

PROJECT NUMBER
Project Number: 60589841

SHEET TITLE
STORM WATER MANAGEMENT PLAN SHEET 5

SHEET NUMBER
G-214

VERIFY PRINTED SCALES
BAR IS ONE INCH ON ORIGINAL DRAWING
0 1"
IF NOT ONE INCH ON THIS SHEET ADJUST SCALE ACCORDINGLY



NOTES:

1. THESE PLANS ARE TO BE USED FOR LOCATION OF PROPOSED STORMWATER MANAGEMENT CONTROL MEASURES ONLY.
2. BMPs ARE NOT DRAWN TO SCALE AND PLACEMENT IS APPROXIMATE.

VERIFY PRINTED
SCALES
BAR IS ONE INCH ON
ORIGINAL DRAWING
0 1"
IF NOT ONE INCH ON
THIS SHEET ADJUST
SCALE ACCORDINGLY

URS

URS Group, Inc.
An AECOM Company

PROJECT

PFOS / PFOA DRINKING
WATER MITIGATION
SYSTEM

Security Water District
(SWD)

CLIENT

USACE Omaha District
1616 Capital Ave.
Omaha, NE 68102

CONSULTANT

URS Group, Inc.
12120 Shamrock Plaza
Omaha, NE 68154
T +1 (402) 334 8181. F +1 (402) 334 1984

ISSUE/REVISION

B	04/24/19	REV 1 SWMP
A	03/27/19	ISSUED FOR SWMP
I/R	DATE	DESCRIPTION

PROJECT NUMBER

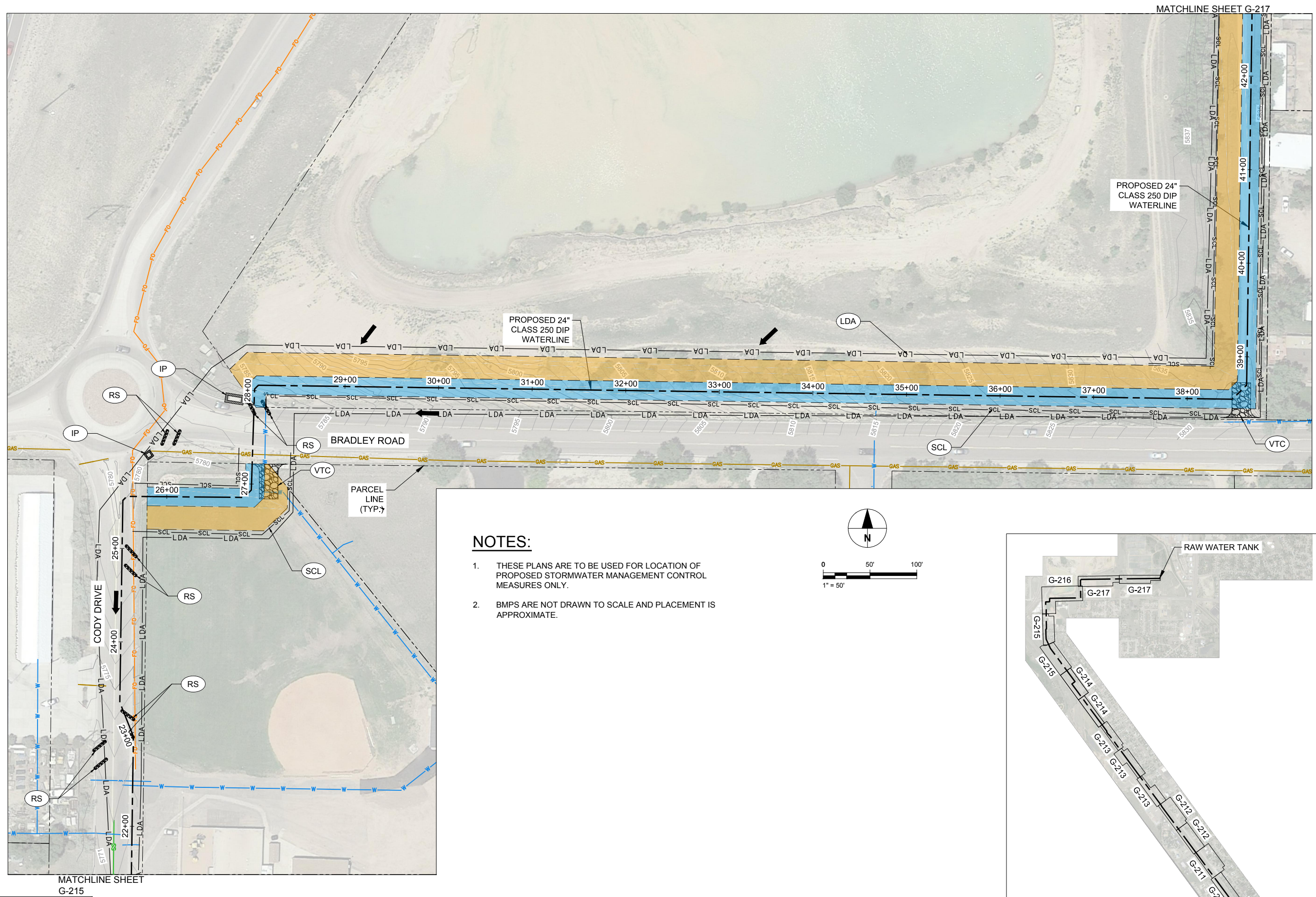
Project Number: 60589841

SHEET TITLE

STORMWATER MANAGEMENT
PLAN SHEET 6


SHEET NUMBER

G-215

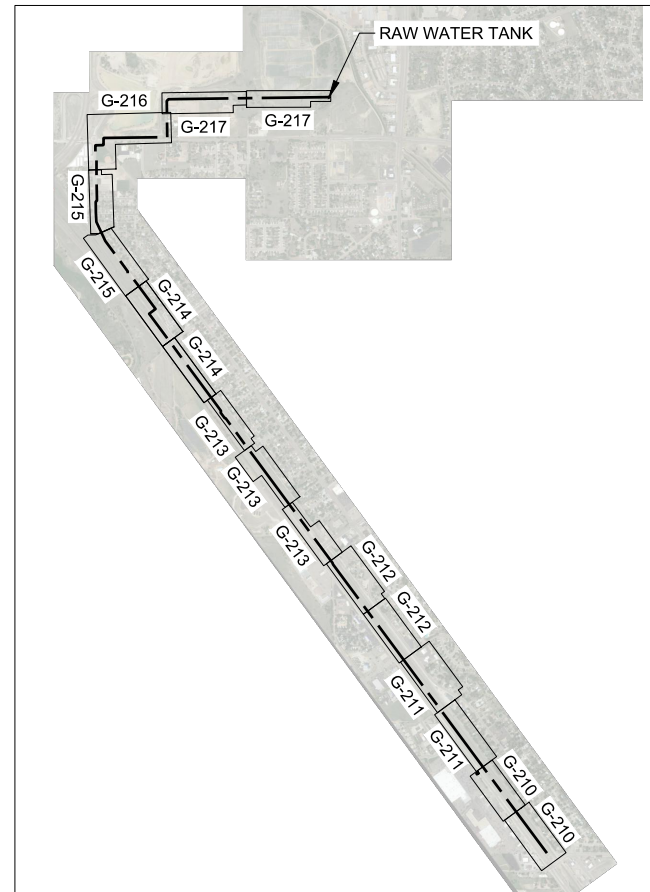


**VERIFY PRINTED
SCALES**

BAR IS ONE INCH ON
ORIGINAL DRAWING

0  1"

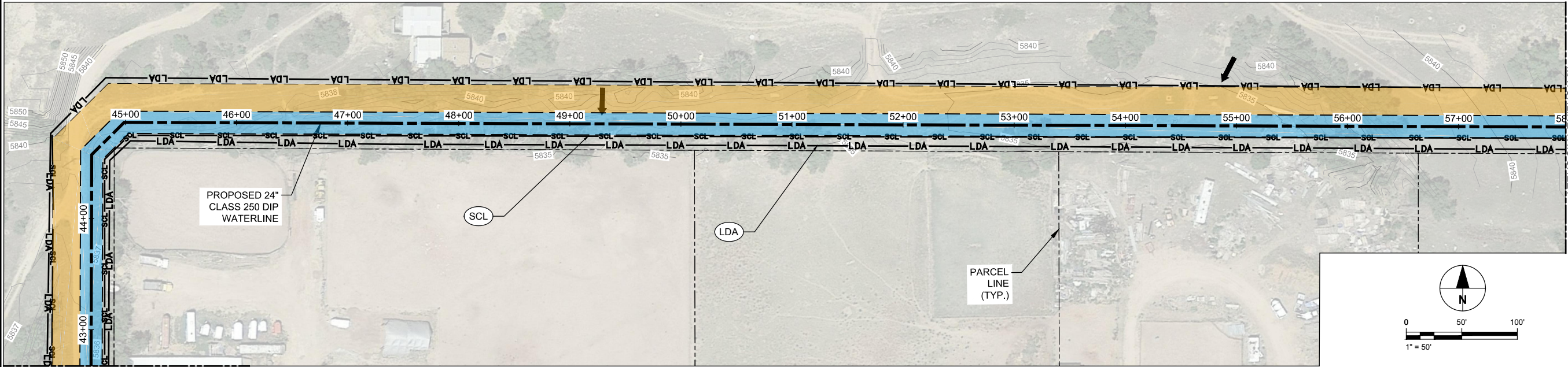
IF NOT ONE INCH ON
THIS SHEET ADJUST
SCALE ACCORDINGLY



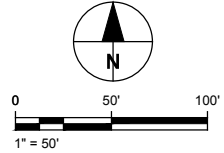
ISSUE/REVISION		
B	04/24/19	REV 1 SWMP
A	03/27/19	ISSUED FOR SWMP
I/R	DATE	DESCRIPTION

G-216

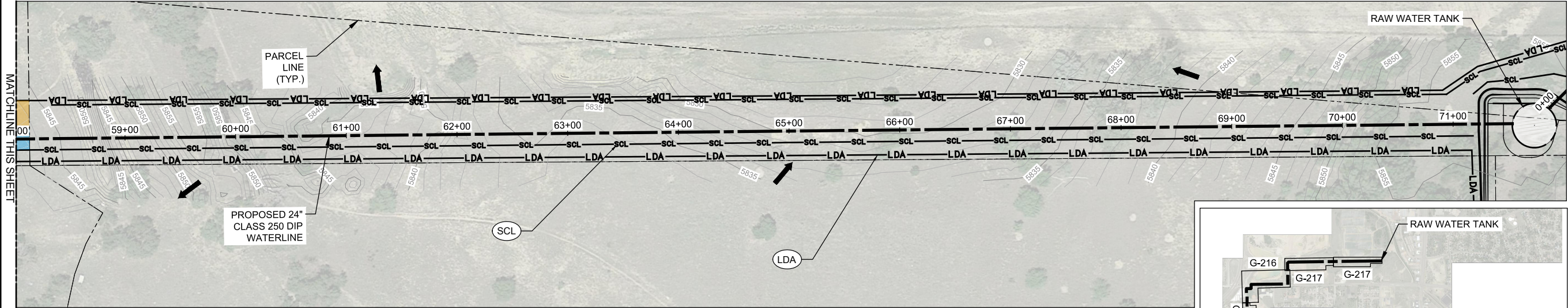
ANSI D 22" x 34"



MATCHLINE SHEET
G-216



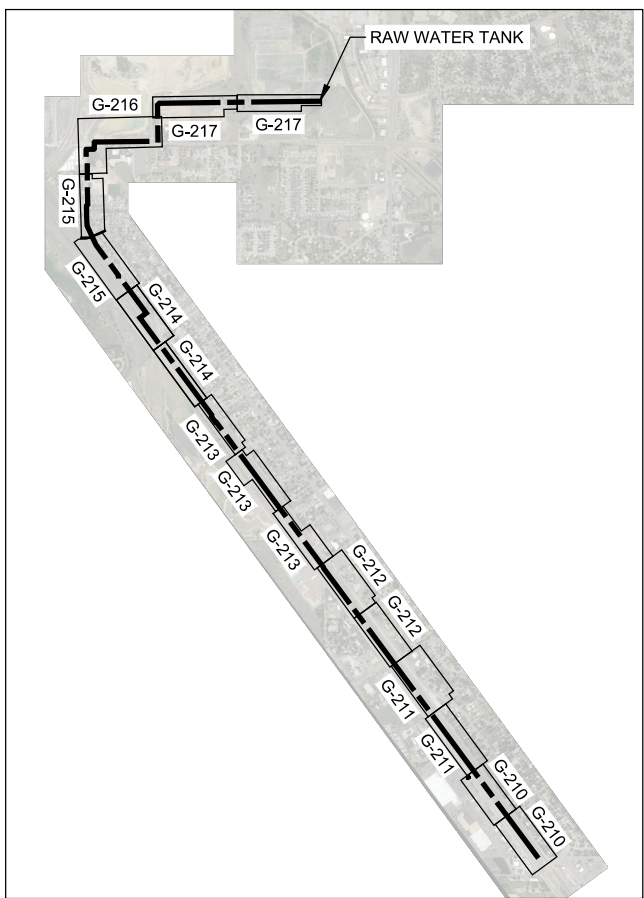
MATCHLINE THIS SHEET



MATCHLINE THIS SHEET

NOTES:

- THESE PLANS ARE TO BE USED FOR LOCATION OF PROPOSED STORMWATER MANAGEMENT CONTROL MEASURES ONLY.
- BMPS ARE NOT DRAWN TO SCALE AND PLACEMENT IS APPROXIMATE.



VERIFY PRINTED
SCALES
BAR IS ONE INCH ON
ORIGINAL DRAWING
0 1"
IF NOT ONE INCH ON
THIS SHEET ADJUST
SCALE ACCORDINGLY



URS Group, Inc.
An AECOM Company

PROJECT

**PFOS / PFOA DRINKING
WATER MITIGATION
SYSTEM**

**Security Water District
(SWD)**

CLIENT

USACE Omaha District

1616 Capital Ave.
Omaha, NE 68102

CONSULTANT

URS Group, Inc.
12120 Shamrock Plaza
Omaha, NE 68154
T +1 (402) 334 8181. F +1 (402) 334 1984

ISSUE/REVISION

B	04/24/19	REV 1 SWMP
A	03/27/19	ISSUED FOR SWMP
U/R	DATE	DESCRIPTION

PROJECT NUMBER

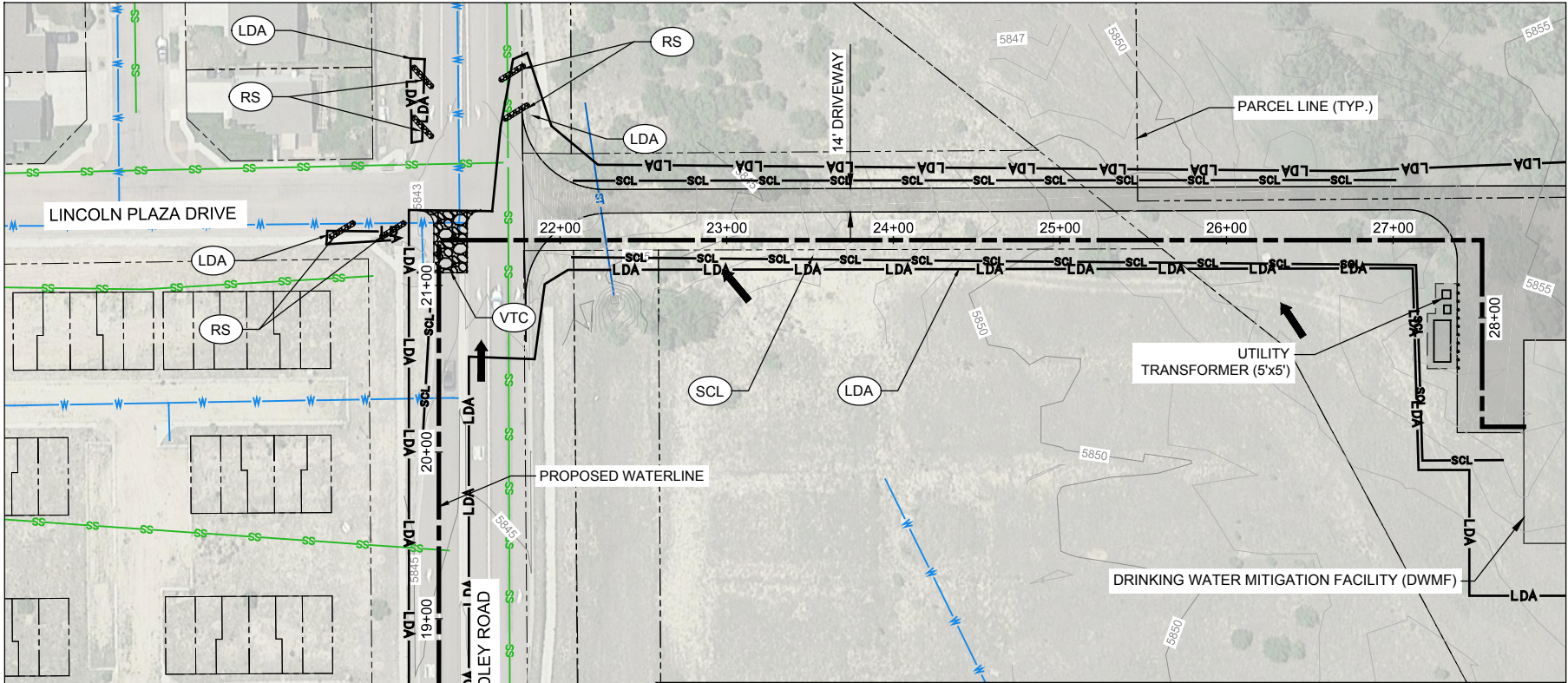
Project Number: 60589841

SHEET TITLE

STORM WATER MANAGEMENT
PLAN SHEET 8

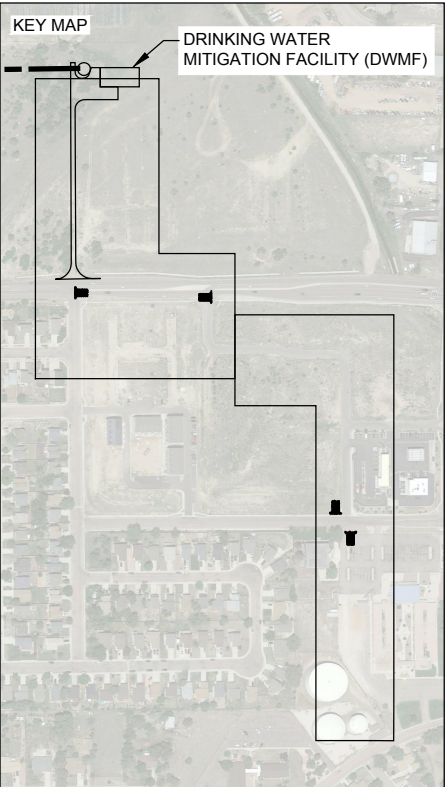
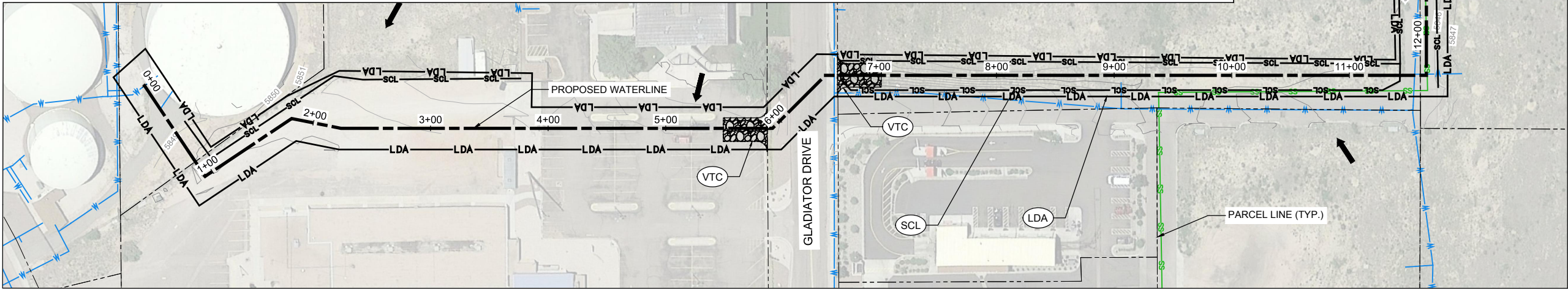
SHEET NUMBER

G-217



NOTES:

1. THESE PLANS ARE TO BE USED FOR LOCATION OF PROPOSED STORMWATER MANAGEMENT CONTROL MEASURES ONLY.
2. BMPS ARE NOT DRAWN TO SCALE AND PLACEMENT IS APPROXIMATE.



VERIFY PRINTED
SCALES
BAR IS ONE INCH ON
ORIGINAL DRAWING
0 1"
IF NOT ONE INCH ON
THIS SHEET ADJUST
SCALE ACCORDINGLY

URS

URS Group, Inc.
An AECOM Company

PROJECT

**PFOS / PFOA DRINKING
WATER MITIGATION
SYSTEM**

**Security Water District
(SWD)**

CLIENT

USACE Omaha District
1616 Capital Ave.
Omaha, NE 68102

CONSULTANT

URS Group, Inc.
12120 Shamrock Plaza
Omaha, NE 68154
T +1 (402) 334 8181. F +1 (402) 334 1984

ISSUE/REVISION

B	04/24/19	REV 1 SWMP
A	03/27/19	ISSUED FOR SWMP
I/R	DATE	DESCRIPTION

PROJECT NUMBER

Project Number: 60589841

SHEET TITLE

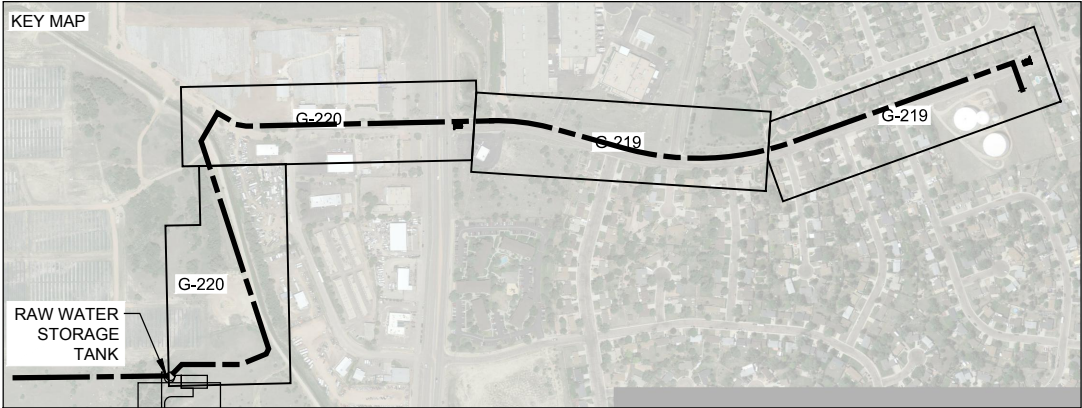
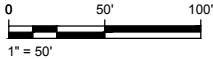
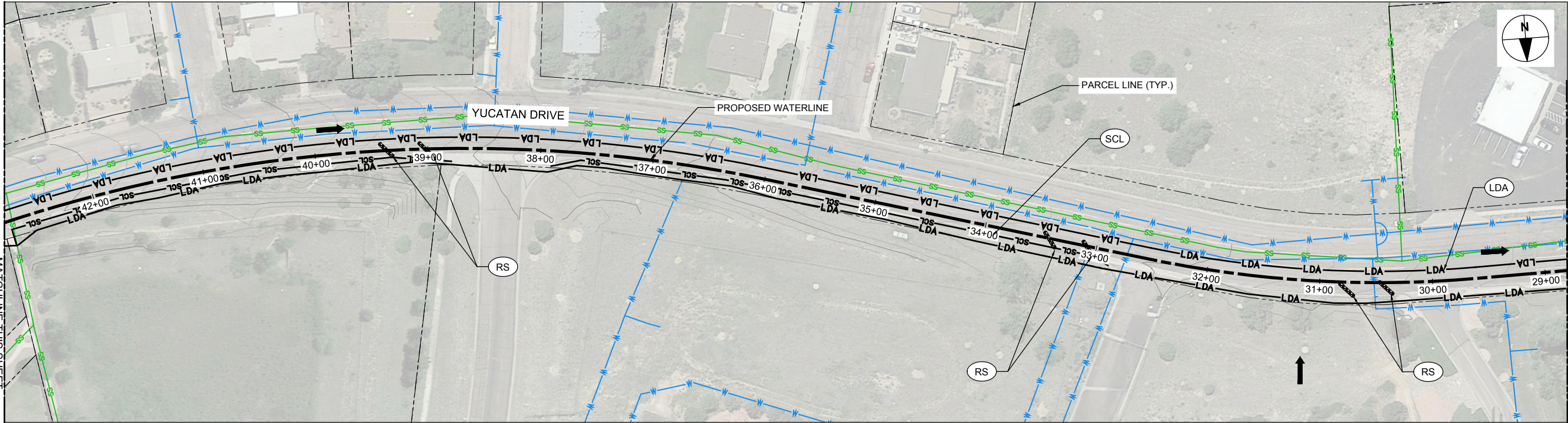
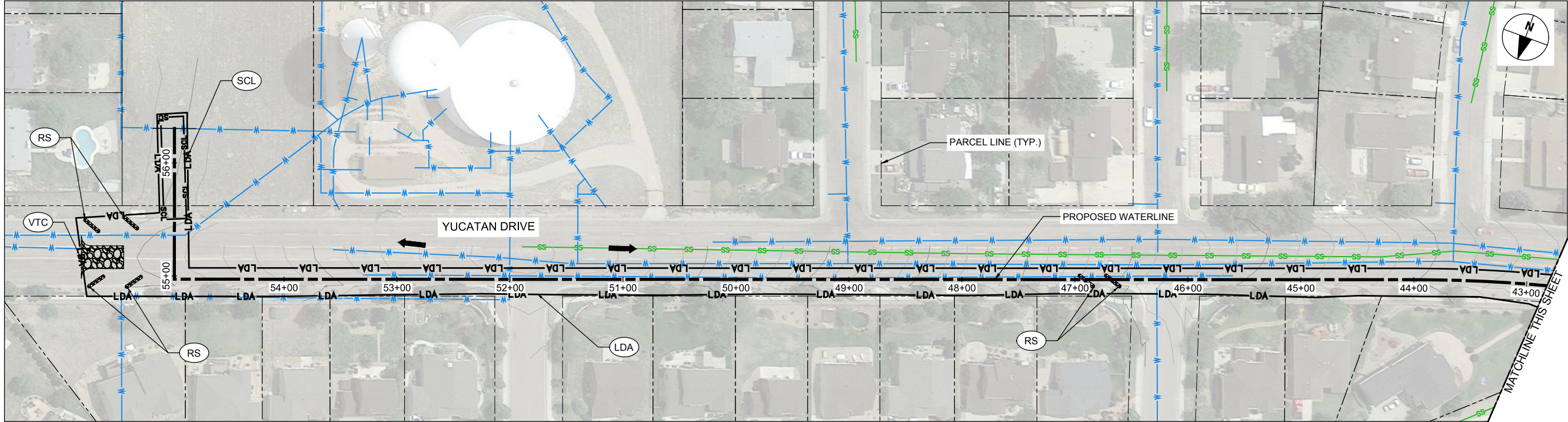
**ZONE 1 STORMWATER
MANAGEMENT PLAN**

SHEET NUMBER

G-218

ANSI D 22" x 34"

Last saved by: JEREMIAS RODRIGUEZ(2019-04-24) Last Plotted: 2019-04-24
Filename: M:\DCS\PROJECTS\SWTR\6058841_PAFB_PFBAS900_CAD_GIS\910_CAD\20-SHEETS\G-210 SWMP SHEETS - ZONE 1 & 2.DWG



VERIFY PRINTED
SCALES
BAR IS ONE INCH ON
ORIGINAL DRAWING
0 1"
IF NOT ONE INCH ON
THIS SHEET ADJUST
SCALE ACCORDINGLY

NOTES:

1. THESE PLANS ARE TO BE USED FOR LOCATION OF PROPOSED STORMWATER MANAGEMENT CONTROL MEASURES ONLY.
2. BMPS ARE NOT DRAWN TO SCALE AND PLACEMENT IS APPROXIMATE.



URS Group, Inc.
An AECOM Company

PROJECT

**PFOS / PFOA DRINKING
WATER MITIGATION
SYSTEM**

**Security Water District
(SWD)**

CLIENT

USACE Omaha District

1616 Capital Ave.
Omaha, NE 68102

CONSULTANT

URS Group, Inc.
12120 Shamrock Plaza
Omaha, NE 68154
T +1 (402) 334 8181. F +1 (402) 334 1984

ISSUE/REVISION

B	04/24/19	REV 1 SWMP
A	03/27/19	ISSUED FOR SWMP
I/R	DATE	DESCRIPTION

PROJECT NUMBER

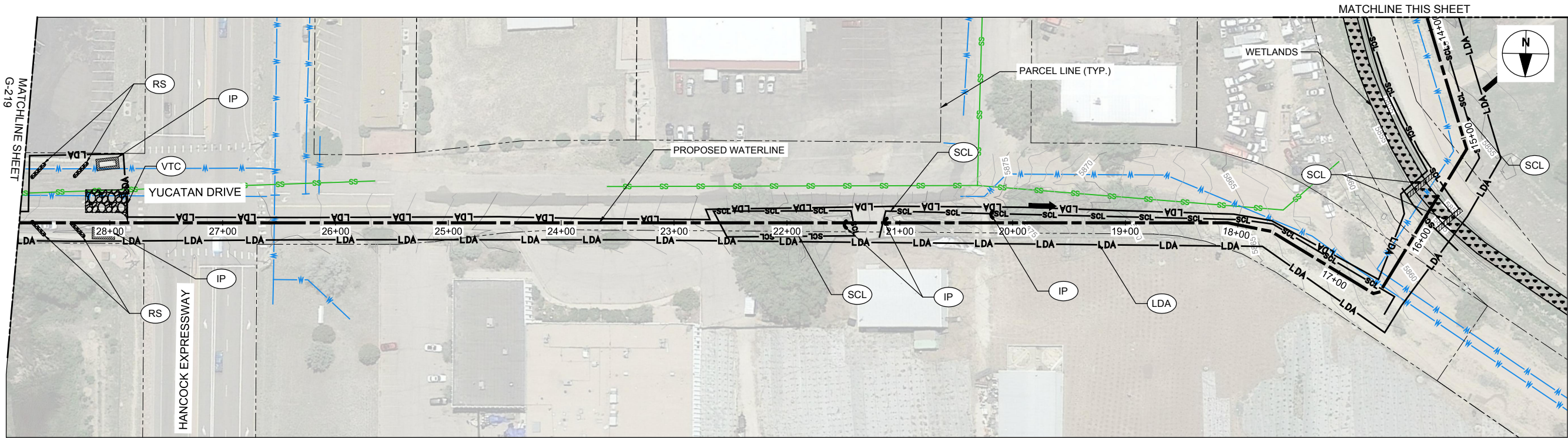
Project Number: 60589841

SHEET TITLE

**ZONE 2 STORMWATER
MANAGEMENT PLAN - SHEET 1**

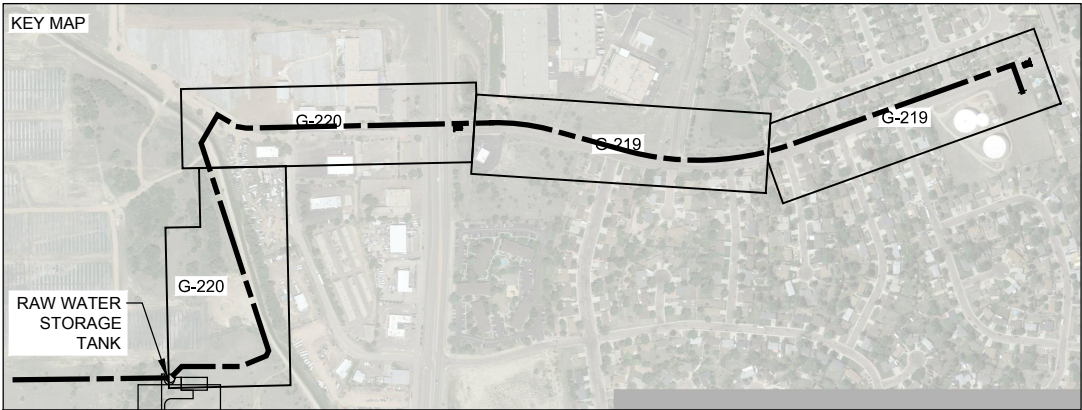
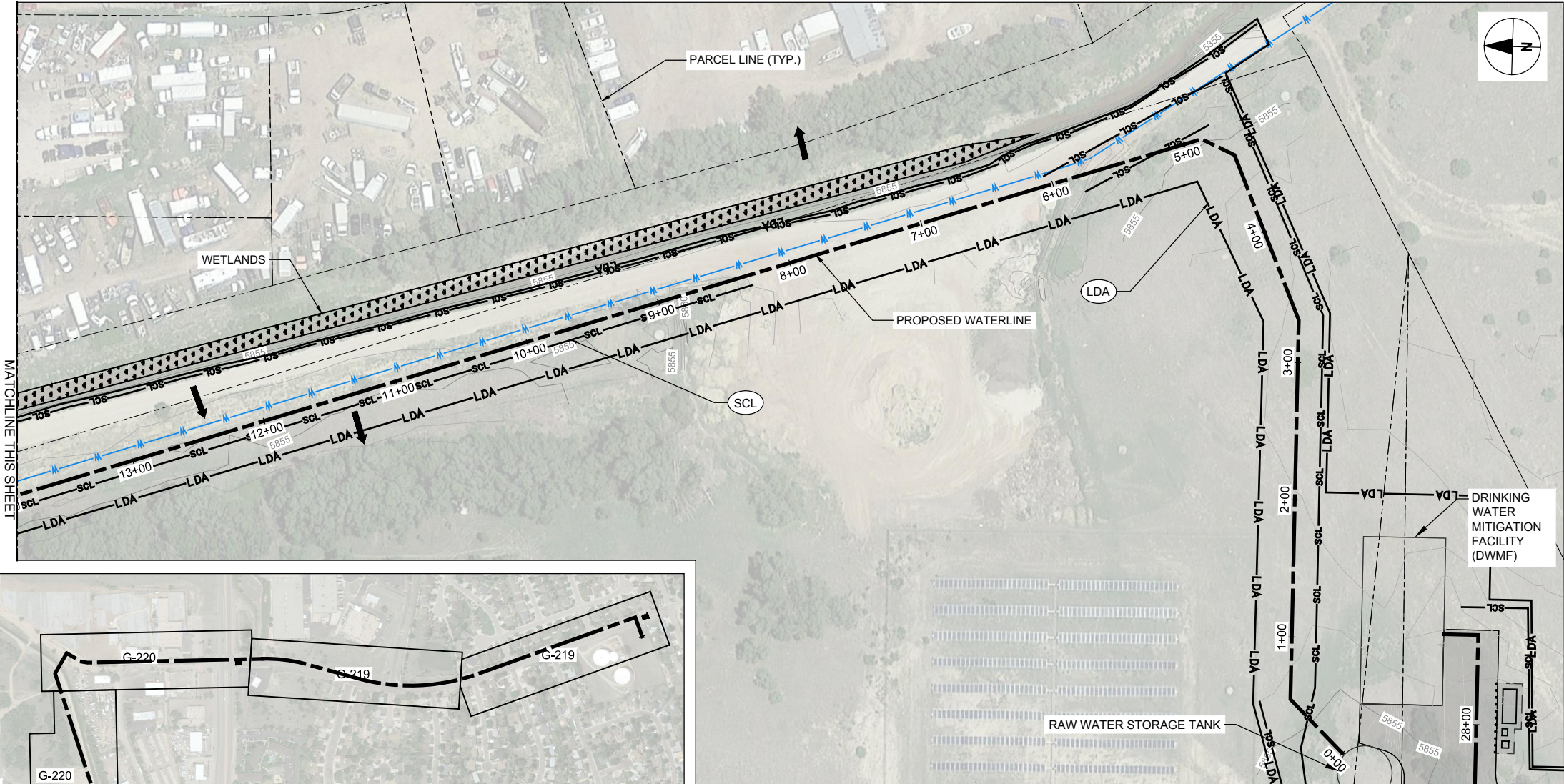
SHEET NUMBER

G-219



NOTES:

1. THESE PLANS ARE TO BE USED FOR LOCATION OF PROPOSED STORMWATER MANAGEMENT CONTROL MEASURES ONLY.
2. BMPS ARE NOT DRAWN TO SCALE AND PLACEMENT IS APPROXIMATE.



VERIFY PRINTED
SCALES
BAR IS ONE INCH ON
ORIGINAL DRAWING
0 1"
IF NOT ONE INCH ON
THIS SHEET ADJUST
SCALE ACCORDINGLY

URS

URS Group, Inc.
An AECOM Company

PROJECT

**PFOs / PFOA DRINKING
WATER MITIGATION
SYSTEM**

**Security Water District
(SWD)**

CLIENT

USACE Omaha District

1616 Capital Ave.
Omaha, NE 68102

CONSULTANT

URS Group, Inc.
12120 Shamrock Plaza
Omaha, NE 68154
T +1 (402) 334 8181. F +1 (402) 334 1984

ISSUE/REVISION

B	04/24/19	REV 1 SWMP
A	03/27/19	ISSUED FOR SWMP
IR	DATE	DESCRIPTION

PROJECT NUMBER

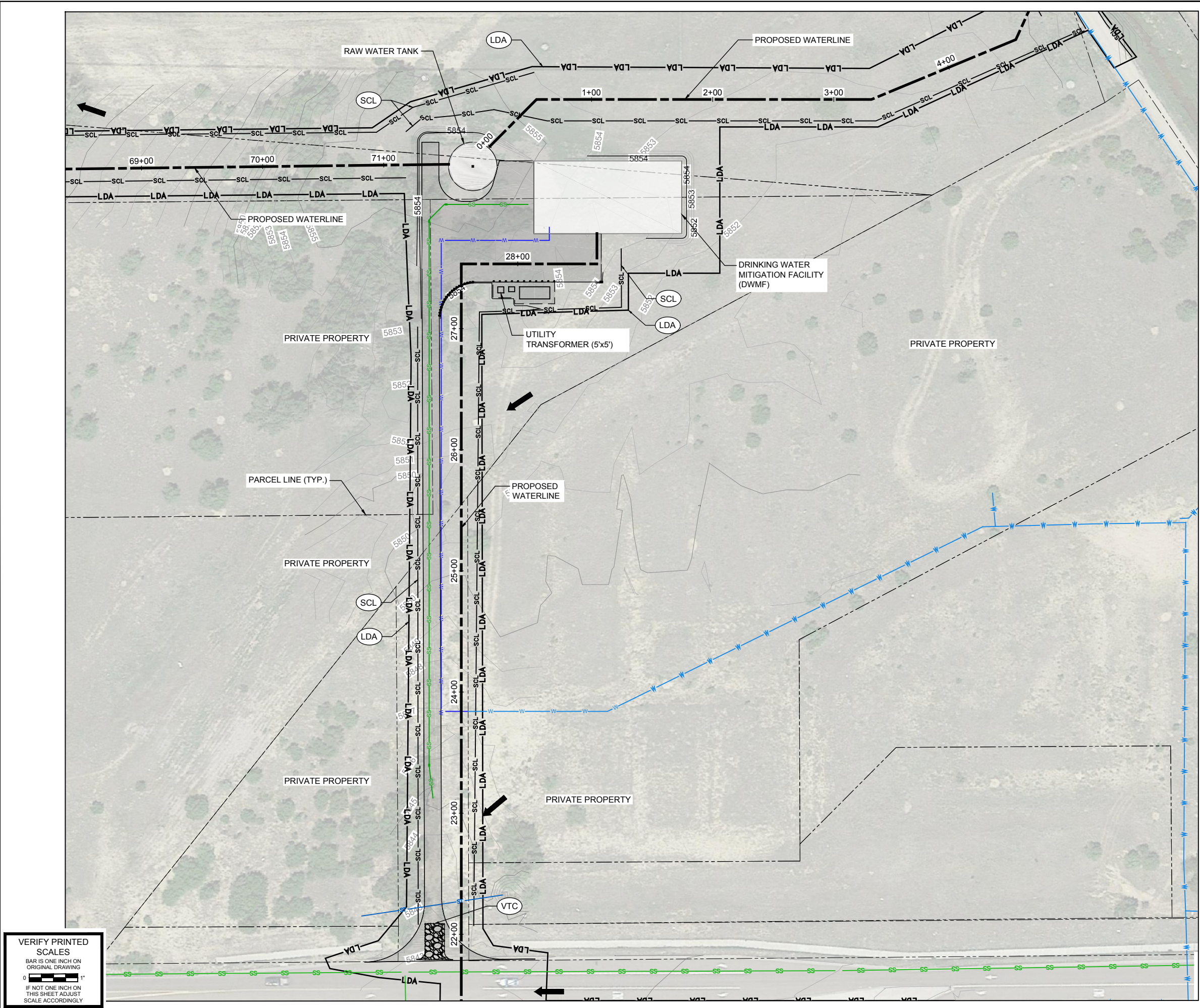
Project Number: 60589841

SHEET TITLE

**ZONE 2 STORMWATER
MANAGEMENT PLAN - SHEET 2**

SHEET NUMBER

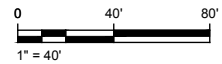
G-220



VERIFY PRINTED SCALES
BAR IS ONE INCH ON ORIGINAL DRAWING
0 1"
IF NOT ONE INCH ON THIS SHEET ADJUST SCALE ACCORDINGLY

NOTES:

1. THESE PLANS ARE TO BE USED FOR LOCATION OF PROPOSED STORMWATER MANAGEMENT CONTROL MEASURES ONLY.
2. BMPS ARE NOT DRAWN TO SCALE AND PLACEMENT IS APPROXIMATE.



URS Group, Inc.
An AECOM Company

PROJECT

PFOS / PFOA DRINKING WATER MITIGATION SYSTEM

Security Water District (SWD)

CLIENT

USACE Omaha District
1616 Capital Ave.
Omaha, NE 68102

CONSULTANT

URS Group, Inc.
12120 Shamrock Plaza
Omaha, NE 68154
T +1 (402) 334 8181. F +1 (402) 334 1984

ISSUE/REVISION

B	04/24/19	REV 1 SWMP
A	03/27/19	ISSUED FOR SWMP
I/R	DATE	DESCRIPTION

PROJECT NUMBER

Project Number: 60589841

SHEET TITLE

SWMP BUILDING LAYOUT

SHEET NUMBER

G-221

SCL

BMP LEGEND

CD

CHECK DAM

CB

COMPOST BLANKET

CFB

COMPOST FILTER BERM

CWA

CONCRETE WASHOUT AREA

CF

CONSTRUCTION FENCE

CM

CONSTRUCTION MARKERS

DW

DEWATERING

DD

DIVERSION DITCH

ECB

EROSION CONTROL BLANKET

IP

INLET PROTECTION

RCD

REINFORCED CHECK DAM

RRB

REINFORCED ROCK BERM

RRC

RRB FOR CULVERT PROTECTION

SB

SEDIMENT BASIN

SCL

SEDIMENT CONTROL LOG

ST

SEDIMENT TRAP

SM

SEEDING AND MULCHING

SF

SILT FENCE

SSA

STABILIZED STAGING AREA

SR

SURFACE ROUGHENING

TSD

TEMPORARY SLOPE DRAIN

TSC

TEMPORARY STREAM CROSSING

TER

TERRACING

VTC

VEHICLE TRACKING CONTROL

WW

VTC WITH WHEEL WASH

RS

ROCK SOCKS

LDA

LIMITS OF DISTURBED AREA

FLOW ARROW

SCL

LDA

County Engineer / Director

Date

Standard Notes for El Paso County Grading and Erosion Control Plans

Revised 5/21/07

- Stormwater discharges from construction sites shall not cause or threaten to cause pollution, contamination, or degradation of State Waters. All work and earth disturbance shall be done in a manner that minimizes pollution of any on-site or off site waters, including wetlands.
- Notwithstanding anything depicted in these plans in words or graphic representation, all design and construction related to roads, storm drainage and erosion control shall conform to the standards and requirements of the most recent version of the relevant adopted El Paso County standards, including the Land Development Code, the Engineering Criteria Manual, the Drainage Criteria Manual, and the Drainage Criteria Manual Volume 2. Any deviations to regulations and standards must be requested, and approved, in writing.
- A separate Stormwater Management Plan (SMWP) for this project shall be completed and an Erosion and Stormwater Quality Control Permit (ESQCP) issued prior to commencing construction. During construction the SMWP is the responsibility of the designated Stormwater Manager, shall be located on site at all times and shall be kept up to date with work progress and changes in the field.
- Once the ESQCP has been issued, the contractor may install the initial stage erosion and sediment control BMPs as indicated on the GEC. A preconstruction meeting between the contractor, engineer, and El Paso County will be held prior to any construction. It is the responsibility of the applicant to coordinate the meeting time and place with County DSD inspections staff.
- Soil erosion control measures for all slopes, channels, ditches, or any disturbed land area shall be completed within 21 calendar days after final grading, or final earth disturbance, has been completed. Disturbed areas and stockpiles which are not at final grade but will remain dormant for longer than 30 days shall also be mulched within 21 days after interim grading. An area that is going to remain in an interim state for more than 60 days shall also be seeded. All temporary soil erosion control measures and BMPs shall be maintained until permanent soil erosion control measures are implemented and established.
- Temporary soil erosion control facilities shall be removed and earth disturbance areas graded and stabilized with permanent soil erosion control measures pursuant to standards and specification prescribed in the DCM Volume II and the Engineering Criteria Manual (ECM) appendix I.
- All persons engaged in earth disturbance shall implement and maintain acceptable soil erosion and sediment control measures including BMPs in conformance with the erosion control technical standards of the Drainage Criteria Manual (DCM) Volume II and in accordance with the Stormwater Management Plan (SWMP).

El Paso County Engineering Criteria Manual
E - 19

Engineer's Statement:

This Grading and Erosion Control Plan was prepared under my direction and supervision and is correct to the best of my knowledge and belief. Said Plan has been prepared according to the criteria established by the County for Grading and Erosion Control Plans. I accept responsibility for any liability caused by any negligent acts, errors or omissions on my part in preparing this report.

Name

Date

El Paso County Grading and Erosion Control Plan

Submittal Checklist

Page 2 of 2

Owner's Statement:

The Owner will comply with the requirements of the Grading and Erosion Control Plan.

Name

Date

El Paso County:

County plan review is provided only for general conformance with County Design Criteria. The County is not responsible for the accuracy and adequacy of the design, dimensions, and/ or elevations which shall be confirmed at the job site. The County through the approval of this document assumes no responsibility for completeness and/ or accuracy of this document.

Filed in accordance with the requirements of the El Paso County Land Development Code, Drainage Criteria, and Engineering Criteria Manual as amended.

El Paso County Engineering Criteria Manual
E - 18



URS Group, Inc.
An AECOM Company

PROJECT

PFOS / PFOA DRINKING
WATER MITIGATION
SYSTEM

Security Water District
(SWD)

CLIENT

USACE Omaha District

1616 Capital Ave.
Omaha, NE 68102

CONSULTANT

URS Group, Inc.
12120 Shamrock Plaza
Omaha, NE 68154
T +1 (402) 334 8181. F +1 (402) 334 1984

ISSUE/REVISION

A	04/24/19	REV 1 SWMP
I/R	DATE	DESCRIPTION

PROJECT NUMBER

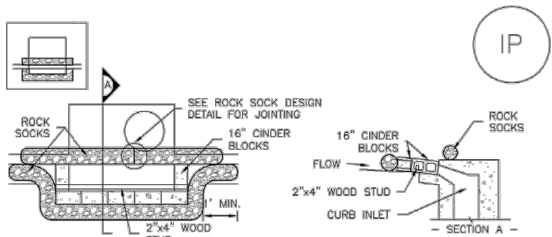
Project Number: 60589841

SHEET TITLE

SWMP LEGEND
AND BMP DETAILS 1

SHEET NUMBER

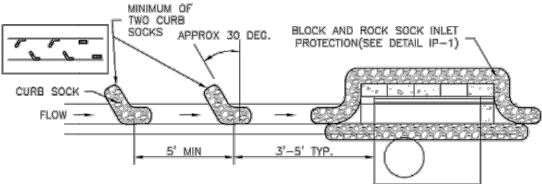
G-222



IP-1. BLOCK AND ROCK SOCK SUMP OR ON GRADE INLET PROTECTION

BLOCK AND CURB SOCK INLET PROTECTION INSTALLATION NOTES

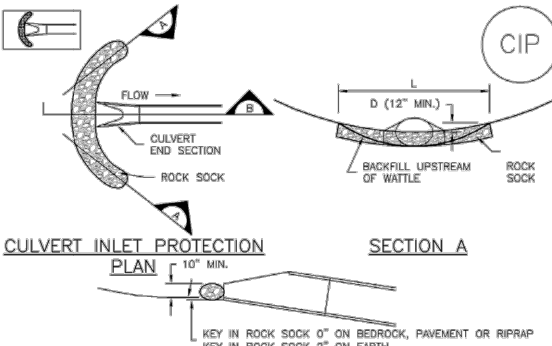
1. SEE ROCK SOCK DESIGN DETAIL FOR INSTALLATION REQUIREMENTS.
2. CONCRETE "CINDER" BLOCKS SHALL BE LAID ON THEIR SIDES AROUND THE INLET IN A SINGLE ROW, ABUTTING ONE ANOTHER WITH THE OPEN END FACING AWAY FROM THE CURB.
3. GRAVEL BAGS SHALL BE PLACED AROUND CONCRETE BLOCKS, CLOSELY ABUTTING ONE ANOTHER AND JOINED TOGETHER IN ACCORDANCE WITH ROCK SOCK DESIGN DETAIL.



IP-2. CURB ROCK SOCKS UPSTREAM OF INLET PROTECTION

CURB ROCK SOCK INLET PROTECTION INSTALLATION NOTES

1. SEE ROCK SOCK DESIGN DETAIL INSTALLATION REQUIREMENTS.
2. PLACEMENT OF THE SOCK SHALL BE APPROXIMATELY 30 DEGREES FROM PERPENDICULAR IN THE OPPOSITE DIRECTION OF FLOW.
3. SOCKS ARE TO BE FLUSH WITH THE CURB AND SPACED A MINIMUM OF 5 FEET APART.
4. AT LEAST TWO CURB SOCKS IN SERIES ARE REQUIRED UPSTREAM OF ON-GRADE INLETS.



CIP-1. CULVERT INLET PROTECTION

CULVERT INLET PROTECTION INSTALLATION NOTES

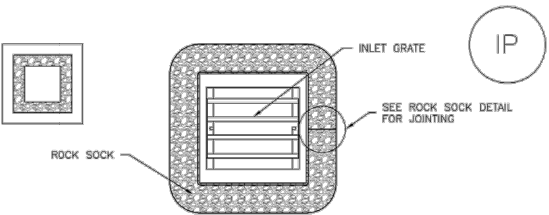
1. SEE PLAN VIEW FOR -LOCATION OF CULVERT INLET PROTECTION.
2. SEE ROCK SOCK DESIGN DETAIL FOR ROCK GRADATION REQUIREMENTS AND JOINTING DETAIL.

CULVERT INLET PROTECTION MAINTENANCE NOTES

1. INSPECT BMPs EACH WORKDAY, AND MAINTAIN THEM IN EFFECTIVE OPERATING CONDITION. MAINTENANCE OF BMPs SHOULD BE PROACTIVE, NOT REACTIVE. INSPECT BMPs AS SOON AS POSSIBLE (AND ALWAYS WITHIN 24 HOURS) FOLLOWING A STORM THAT CAUSES SURFACE EROSION, AND PERFORM NECESSARY MAINTENANCE.
2. FREQUENT OBSERVATIONS AND MAINTENANCE ARE NECESSARY TO MAINTAIN BMPs IN EFFECTIVE OPERATING CONDITION. INSPECTIONS AND CORRECTIVE MEASURES SHOULD BE DOCUMENTED THOROUGHLY.
3. WHERE BMPs HAVE FAILED, REPAIR OR REPLACEMENT SHOULD BE INITIATED UPON DISCOVERY OF THE FAILURE.
4. SEDIMENT ACCUMULATED UPSTREAM OF THE CULVERT SHALL BE REMOVED WHEN THE SEDIMENT DEPTH IS 1/2 THE HEIGHT OF THE ROCK SOCK.
5. CULVERT INLET PROTECTION SHALL REMAIN IN PLACE UNTIL THE UPSTREAM DISTURBED AREA IS PERMANENTLY STABILIZED AND APPROVED BY THE LOCAL JURISDICTION.

(DETAILS ADAPTED FROM AURORA, COLORADO, NOT AVAILABLE IN AUTOCAD)

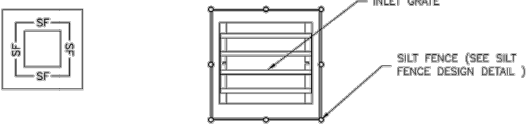
NOTE: MANY JURISDICTIONS HAVE BMP DETAILS THAT VARY FROM UDFCD STANDARD DETAILS. CONSULT WITH LOCAL JURISDICTIONS AS TO WHICH DETAIL SHOULD BE USED WHEN DIFFERENCES ARE NOTED.



IP-3. ROCK SOCK SUMP/AREA INLET PROTECTION

ROCK SOCK SUMP/AREA INLET PROTECTION INSTALLATION NOTES

1. SEE ROCK SOCK DESIGN DETAIL FOR INSTALLATION REQUIREMENTS.
2. STRAW WATTLES/SEDIMENT CONTROL LOGS MAY BE USED IN PLACE OF ROCK SOCKS FOR INLETS IN PERVIOUS AREAS. INSTALL PER SEDIMENT CONTROL LOG DETAIL.



IP-4. SILT FENCE FOR SUMP INLET PROTECTION

SILT FENCE INLET PROTECTION INSTALLATION NOTES

1. SEE SILT FENCE DESIGN DETAIL FOR INSTALLATION REQUIREMENTS.
2. POSTS SHALL BE PLACED AT EACH CORNER OF THE INLET AND AROUND THE EDGES AT A MAXIMUM SPACING OF 3 FEET.
3. STRAW WATTLES/SEDIMENT CONTROL LOGS MAY BE USED IN PLACE OF SILT FENCE FOR INLETS IN PERVIOUS AREAS. INSTALL PER SEDIMENT CONTROL LOG DETAIL.

GENERAL INLET PROTECTION INSTALLATION NOTES

1. SEE PLAN VIEW FOR: -LOCATION OF INLET PROTECTION. -TYPE OF INLET PROTECTION (IP.1, IP.2, IP.3, IP.4, IP.5, IP.6)
2. INLET PROTECTION SHALL BE INSTALLED PROMPTLY AFTER INLET CONSTRUCTION OR PAVING IS COMPLETE (TYPICALLY WITHIN 48 HOURS). IF A RAINFALL/RUNOFF EVENT IS FORECAST, INSTALL INLET PROTECTION PRIOR TO ONSET OF EVENT.
3. MANY JURISDICTIONS HAVE BMP DETAILS THAT VARY FROM UDFCD STANDARD DETAILS. CONSULT WITH LOCAL JURISDICTIONS AS TO WHICH DETAIL SHOULD BE USED WHEN DIFFERENCES ARE NOTED.

INLET PROTECTION MAINTENANCE NOTES

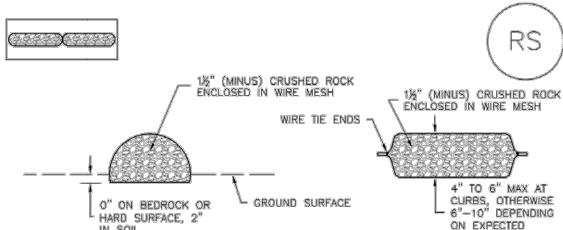
1. INSPECT BMPs EACH WORKDAY, AND MAINTAIN THEM IN EFFECTIVE OPERATING CONDITION. MAINTENANCE OF BMPs SHOULD BE PROACTIVE, NOT REACTIVE. INSPECT BMPs AS SOON AS POSSIBLE (AND ALWAYS WITHIN 24 HOURS) FOLLOWING A STORM THAT CAUSES SURFACE EROSION, AND PERFORM NECESSARY MAINTENANCE.
2. FREQUENT OBSERVATIONS AND MAINTENANCE ARE NECESSARY TO MAINTAIN BMPs IN EFFECTIVE OPERATING CONDITION. INSPECTIONS AND CORRECTIVE MEASURES SHOULD BE DOCUMENTED THOROUGHLY.
3. WHERE BMPs HAVE FAILED, REPAIR OR REPLACEMENT SHOULD BE INITIATED UPON DISCOVERY OF THE FAILURE.
4. SEDIMENT ACCUMULATED UPSTREAM OF INLET PROTECTION SHALL BE REMOVED AS NECESSARY TO MAINTAIN BMP EFFECTIVENESS. TYPICALLY WHEN STORAGE VOLUME REACHES 50% OF CAPACITY, A DEPTH OF 6" WHEN SILT FENCE IS USED, OR 1/4 OF THE HEIGHT FOR STRAW BALES.
5. INLET PROTECTION IS TO REMAIN IN PLACE UNTIL THE UPSTREAM DISTURBED AREA IS PERMANENTLY STABILIZED, UNLESS THE LOCAL JURISDICTION APPROVES EARLIER REMOVAL OF INLET PROTECTION IN STREETS.
6. WHEN INLET PROTECTION AT AREA INLETS IS REMOVED, THE DISTURBED AREA SHALL BE COVERED WITH TOP SOIL, SEEDED AND MULCHED, OR OTHERWISE STABILIZED IN A MANNER APPROVED BY THE LOCAL JURISDICTION.

(DETAILS ADAPTED FROM TOWN OF PARKER, COLORADO AND CITY OF AURORA, COLORADO, NOT AVAILABLE IN AUTOCAD)

NOTE: MANY JURISDICTIONS HAVE BMP DETAILS THAT VARY FROM UDFCD STANDARD DETAILS. CONSULT WITH LOCAL JURISDICTIONS AS TO WHICH DETAIL SHOULD BE USED WHEN DIFFERENCES ARE NOTED.

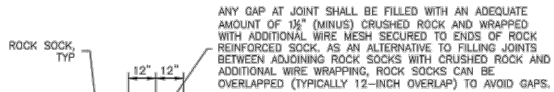
NOTE: THE DETAILS INCLUDED WITH THIS FACT SHEET SHOW COMMONLY USED, CONVENTIONAL METHODS OF INLET PROTECTION IN THE DENVER METROPOLITAN AREA. THERE ARE MANY PROPRIETARY INLET PROTECTION METHODS ON THE MARKET. UDFCD NEITHER ENDORSES NOR DISCOURAGES USE OF PROPRIETARY PROTECTION PRODUCTS; HOWEVER, IN THE EVENT PROPRIETARY METHODS ARE USED, THE APPROPRIATE DETAIL FROM THE MANUFACTURER MUST BE INCLUDED IN THE SWMP AND THE BMP MUST BE INSTALLED AND MAINTAINED AS SHOWN IN THE MANUFACTURER'S DETAILS.

NOTE: SOME MUNICIPALITIES DISCOURAGE OR PROHIBIT THE USE OF STRAW BALES FOR INLET PROTECTION. CHECK WITH LOCAL JURISDICTION TO DETERMINE IF STRAW BALE INLET PROTECTION IS ACCEPTABLE.



ROCK SOCK SECTION

ROCK SOCK PLAN



ROCK SOCK JOINTING

ROCK SOCK INSTALLATION NOTES

1. SEE PLAN VIEW FOR: -LOCATION(S) OF ROCK SOCKS.
2. CRUSHED ROCK SHALL BE 1 1/2" (MINUS) IN SIZE WITH A FRACTURED FACE (ALL SIDES) AND SHALL COMPLY WITH GRADATION SHOWN ON THIS SHEET (1 1/2" MINUS).
3. WIRE MESH SHALL BE FABRICATED OF 10 GAGE POULTRY MESH, OR EQUIVALENT, WITH A MAXIMUM OPENING OF 1/2". RECOMMENDED MINIMUM ROLL WIDTH OF 48"
4. WIRE MESH SHALL BE SECURED USING "HOG RINGS" OR WIRE TIES AT 6" CENTERS ALONG ALL JOINTS AND AT 2' CENTERS ON ENDS OF SOCKS.
5. SOME MUNICIPALITIES MAY ALLOW THE USE OF FILTER FABRIC AS AN ALTERNATIVE TO WIRE MESH FOR THE ROCK ENCLOSURE.

RS-1. ROCK SOCK PERIMETER CONTROL

ROCK SOCK MAINTENANCE NOTES

1. INSPECT BMPs EACH WORKDAY, AND MAINTAIN THEM IN EFFECTIVE OPERATING CONDITION. MAINTENANCE OF BMPs SHOULD BE PROACTIVE, NOT REACTIVE. INSPECT BMPs AS SOON AS POSSIBLE (AND ALWAYS WITHIN 24 HOURS) FOLLOWING A STORM THAT CAUSES SURFACE EROSION, AND PERFORM NECESSARY MAINTENANCE.
2. FREQUENT OBSERVATIONS AND MAINTENANCE ARE NECESSARY TO MAINTAIN BMPs IN EFFECTIVE OPERATING CONDITION. INSPECTIONS AND CORRECTIVE MEASURES SHOULD BE DOCUMENTED THOROUGHLY.
3. WHERE BMPs HAVE FAILED, REPAIR OR REPLACEMENT SHOULD BE INITIATED UPON DISCOVERY OF THE FAILURE.
4. ROCK SOCKS SHALL BE REPLACED IF THEY BECOME HEAVILY SOILED, OR DAMAGED BEYOND REPAIR.
5. SEDIMENT ACCUMULATED UPSTREAM OF ROCK SOCKS SHALL BE REMOVED AS NEEDED TO MAINTAIN FUNCTIONALITY OF THE BMP. TYPICALLY WHEN DEPTH OF ACCUMULATED SEDIMENTS IS APPROXIMATELY 1/2 OF THE HEIGHT OF THE ROCK SOCK.
6. ROCK SOCKS ARE TO REMAIN IN PLACE UNTIL THE UPSTREAM DISTURBED AREA IS STABILIZED AND APPROVED BY THE LOCAL JURISDICTION.
7. WHEN ROCK SOCKS ARE REMOVED, ALL DISTURBED AREAS SHALL BE COVERED WITH TOPSOIL, SEEDED AND MULCHED OR OTHERWISE STABILIZED AS APPROVED BY LOCAL JURISDICTION.

(DETAIL ADAPTED FROM TOWN OF PARKER, COLORADO AND CITY OF AURORA, COLORADO, NOT AVAILABLE IN AUTOCAD)

NOTE: MANY JURISDICTIONS HAVE BMP DETAILS THAT VARY FROM UDFCD STANDARD DETAILS. CONSULT WITH LOCAL JURISDICTIONS AS TO WHICH DETAIL SHOULD BE USED WHEN DIFFERENCES ARE NOTED.

NOTE: THE DETAILS INCLUDED WITH THIS FACT SHEET SHOW COMMONLY USED, CONVENTIONAL METHODS OF ROCK SOCK INSTALLATION IN THE DENVER METROPOLITAN AREA. THERE ARE MANY OTHER SIMILAR PROPRIETARY PRODUCTS ON THE MARKET. UDFCD NEITHER ENDORSES NOR DISCOURAGES USE OF PROPRIETARY PROTECTION PRODUCTS; HOWEVER, IN THE EVENT PROPRIETARY METHODS ARE USED, THE APPROPRIATE DETAIL FROM THE MANUFACTURER MUST BE INCLUDED IN THE SWMP AND THE BMP MUST BE INSTALLED AND MAINTAINED AS SHOWN IN THE MANUFACTURER'S DETAILS.

PROJECT

PFOS / PFOA DRINKING WATER MITIGATION SYSTEM

Security Water District (SWD)

CLIENT

USACE Omaha District

1616 Capital Ave.
Omaha, NE 68102

CONSULTANT

URS Group, Inc.
12120 Shamrock Plaza
Omaha, NE 68154
T +1 (402) 334 8181. F +1 (402) 334 1984

ISSUE/REVISION

A	04/24/19	REV 1 SWMP
I/R	DATE	DESCRIPTION

PROJECT NUMBER

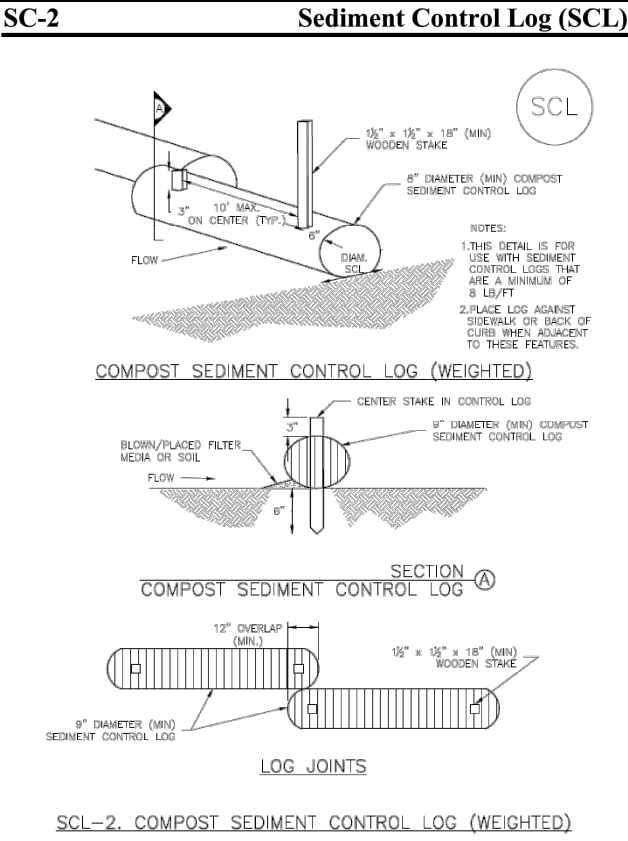
Project Number: 60589841

SHEET TITLE

SWMP LEGEND
AND BMP DETAILS 2

SHEET NUMBER

G-223



SC-2Sediment Control Log (SCL)

SEDIMENT CONTROL LOG INSTALLATION NOTES

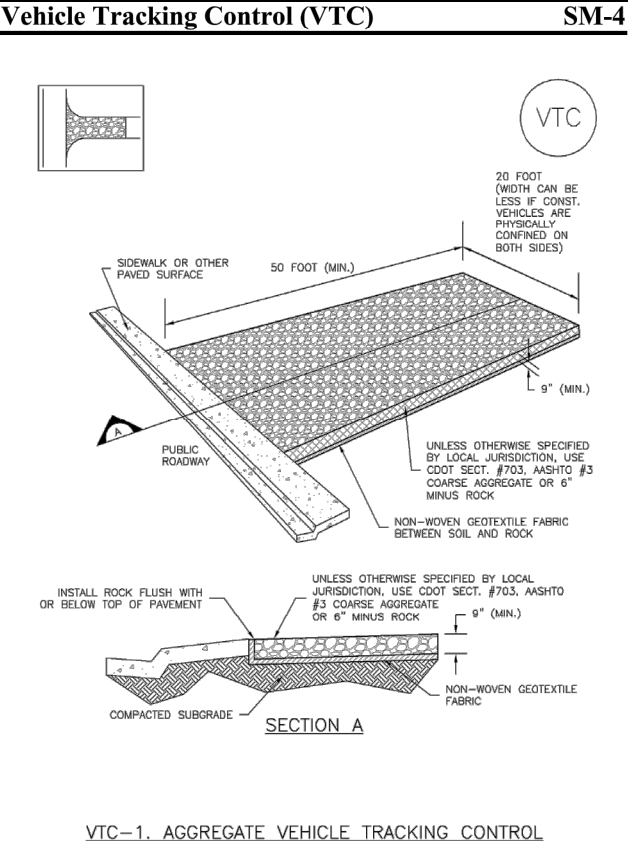
1. SEE PLAN VIEW FOR LOCATION AND LENGTH OF SEDIMENT CONTROL LOGS.
2. SEDIMENT CONTROL LOGS THAT ACT AS A PERIMETER CONTROL SHALL BE INSTALLED PRIOR TO ANY UPGRADIENT LAND-DISTURBING ACTIVITIES.
3. SEDIMENT CONTROL LOGS SHALL CONSIST OF STRAW, COMPOST, EXCELSIOR OR COCONUT FIBER, AND SHALL BE FREE OF ANY NOXIOUS WEED SEEDS OR DEFECTS INCLUDING RIPS, HOLES AND OBVIOUS WEAR.
4. SEDIMENT CONTROL LOGS MAY BE USED AS SMALL CHECK DAMS IN DITCHES AND SWALES. HOWEVER, THEY SHOULD NOT BE USED IN PERENNIAL STREAMS.
5. IT IS RECOMMENDED THAT SEDIMENT CONTROL LOGS BE TRENCHED INTO THE GROUND TO A DEPTH OF APPROXIMATELY 1/2 OF THE DIAMETER OF THE LOG. IF TRENCHING TO THIS DEPTH IS NOT FEASIBLE AND/OR DESIRABLE (SHORT TERM INSTALLATION WITH DESIRE NOT TO DAMAGE LANDSCAPE) A LESSER TRENCHING DEPTH MAY BE ACCEPTABLE WITH MORE ROBUST STAKING. COMPOST LOGS THAT ARE 8 LB/FT DO NOT NEED TO BE TRENCHED.
6. THE UPHILL SIDE OF THE SEDIMENT CONTROL LOG SHALL BE BACKFILLED WITH SOIL OR FILTER MATERIAL THAT IS FREE OF ROCKS AND DEBRIS. THE SOIL SHALL BE TIGHTLY COMPACTED INTO THE SHAPE OF A RIGHT TRIANGLE USING A SHOVEL OR WEIGHTED LAWN ROLLER OR BLOWN IN PLACE.
7. FOLLOW MANUFACTURERS' GUIDANCE FOR STAKING. IF MANUFACTURERS' INSTRUCTIONS DO NOT SPECIFY SPACING, STAKES SHALL BE PLACED ON 4' CENTERS AND EMBEDDED A MINIMUM OF 6" INTO THE GROUND. 3" OF THE STAKE SHALL PROTRUDE FROM THE TOP OF THE LOG. STAKES THAT ARE BROKEN PRIOR TO INSTALLATION SHALL BE REPLACED. COMPOST LOGS SHOULD BE STAKED 10' ON CENTER.

SEDIMENT CONTROL LOG MAINTENANCE NOTES

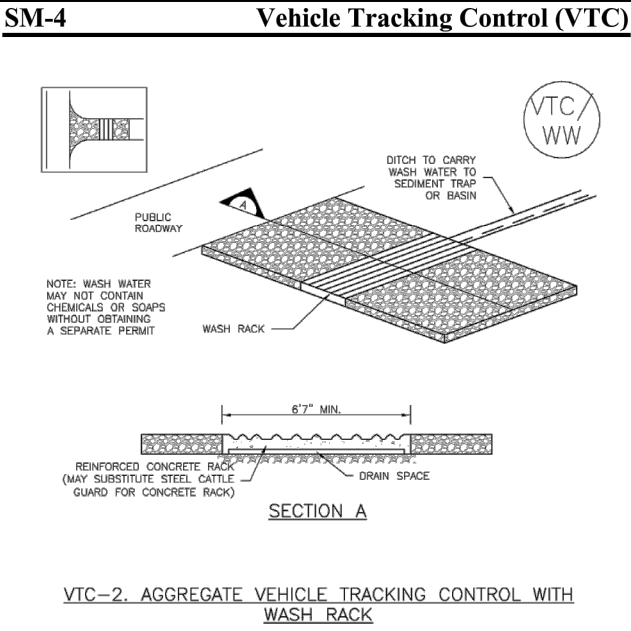
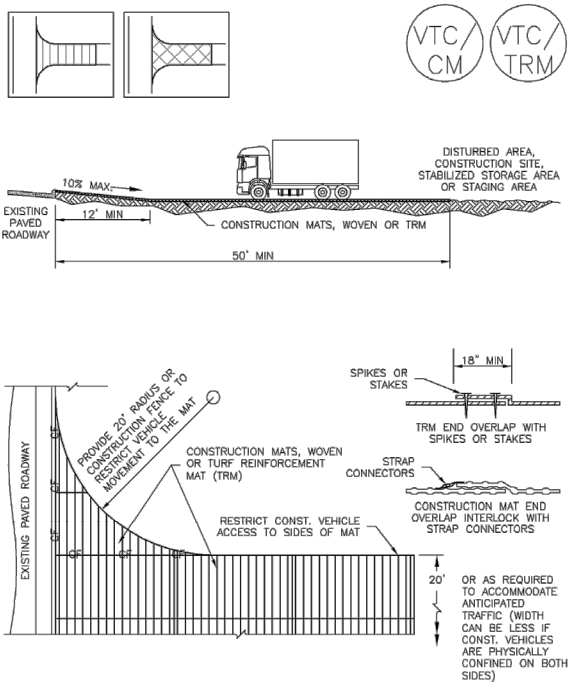
1. INSPECT BMPs EACH WORKDAY, AND MAINTAIN THEM IN EFFECTIVE OPERATING CONDITION. MAINTENANCE OF BMPs SHOULD BE PROACTIVE, NOT REACTIVE. INSPECT BMPs AS SOON AS POSSIBLE (AND ALWAYS WITHIN 24 HOURS) FOLLOWING A STORM THAT CAUSES SURFACE EROSION, AND PERFORM NECESSARY MAINTENANCE.
2. FREQUENT OBSERVATIONS AND MAINTENANCE ARE NECESSARY TO MAINTAIN BMPs IN EFFECTIVE OPERATING CONDITION. INSPECTIONS AND CORRECTIVE MEASURES SHOULD BE DOCUMENTED THOROUGHLY.
3. WHERE BMPs HAVE FAILED, REPAIR OR REPLACEMENT SHOULD BE INITIATED UPON DISCOVERY OF THE FAILURE.
4. SEDIMENT ACCUMULATED UPSTREAM OF SEDIMENT CONTROL LOG SHALL BE REMOVED AS NEEDED TO MAINTAIN FUNCTIONALITY OF THE BMP. TYPICALLY WHEN DEPTH OF ACCUMULATED SEDIMENTS IS APPROXIMATELY 1/2 OF THE HEIGHT OF THE SEDIMENT CONTROL LOG.
5. SEDIMENT CONTROL LOG SHALL BE REMOVED AT THE END OF CONSTRUCTION.COMPOST FROM COMPOST LOGS MAY BE LEFT IN PLACE AS LONG AS BAGS ARE REMOVED AND THE AREA SEEDED. IF DISTURBED AREAS EXIST AFTER REMOVAL, THEY SHALL BE COVERED WITH TOP SOIL, SEEDED AND MULCHED OR OTHERWISE STABILIZED IN A MANNER APPROVED BY THE LOCAL JURISDICTION.

(DETAILS ADAPTED FROM TOWN OF PARKER, COLORADO, JEFFERSON COUNTY, COLORADO, DOUGLAS COUNTY, COLORADO, AND CITY OF AURORA, COLORADO, NOT AVAILABLE IN AUTOCAD)

NOTE: MANY JURISDICTIONS HAVE BMP DETAILS THAT VARY FROM UDFCD STANDARD DETAILS. CONSULT WITH LOCAL JURISDICTIONS AS TO WHICH DETAIL SHOULD BE USED WHEN DIFFERENCES ARE NOTED.



Vehicle Tracking Control (VTC)SM-4



SM-4Vehicle Tracking Control (VTC)

STABILIZED CONSTRUCTION ENTRANCE/EXIT INSTALLATION NOTES

1. SEE PLAN VIEW FOR
-LOCATION OF CONSTRUCTION ENTRANCE(S)/EXIT(S).
-TYPE OF CONSTRUCTION ENTRANCE(S)/EXITS(S) (WITH/WITHOUT WHEEL WASH, CONSTRUCTION MAT OR TRM).
2. CONSTRUCTION MAT OR TRM STABILIZED CONSTRUCTION ENTRANCES ARE ONLY TO BE USED ON SHORT DURATION PROJECTS (TYPICALLY RANGING FROM A WEEK TO A MONTH) WHERE THERE WILL BE LIMITED VEHICULAR ACCESS.
3. A STABILIZED CONSTRUCTION ENTRANCE/EXIT SHALL BE LOCATED AT ALL ACCESS POINTS WHERE VEHICLES ACCESS THE CONSTRUCTION SITE FROM PAVED RIGHT-OF-WAYS.
4. STABILIZED CONSTRUCTION ENTRANCE/EXIT SHALL BE INSTALLED PRIOR TO ANY LAND DISTURBING ACTIVITIES.
5. A NON-WOVEN GEOTEXTILE FABRIC SHALL BE PLACED UNDER THE STABILIZED CONSTRUCTION ENTRANCE/EXIT PRIOR TO THE PLACEMENT OF ROCK.
6. UNLESS OTHERWISE SPECIFIED BY LOCAL JURISDICTION, ROCK SHALL CONSIST OF DOT SECT. #703, ASHTO #3 COARSE AGGREGATE OR 6" (MINUS) ROCK.

STABILIZED CONSTRUCTION ENTRANCE/EXIT MAINTENANCE NOTES

1. INSPECT BMPs EACH WORKDAY, AND MAINTAIN THEM IN EFFECTIVE OPERATING CONDITION. MAINTENANCE OF BMPs SHOULD BE PROACTIVE, NOT REACTIVE. INSPECT BMPs AS SOON AS POSSIBLE (AND ALWAYS WITHIN 24 HOURS) FOLLOWING A STORM THAT CAUSES SURFACE EROSION, AND PERFORM NECESSARY MAINTENANCE.
2. FREQUENT OBSERVATIONS AND MAINTENANCE ARE NECESSARY TO MAINTAIN BMPs IN EFFECTIVE OPERATING CONDITION. INSPECTIONS AND CORRECTIVE MEASURES SHOULD BE DOCUMENTED THOROUGHLY.
3. WHERE BMPs HAVE FAILED, REPAIR OR REPLACEMENT SHOULD BE INITIATED UPON DISCOVERY OF THE FAILURE.
4. ROCK SHALL BE REAPPLIED OR REGRADED AS NECESSARY TO THE STABILIZED ENTRANCE/EXIT TO MAINTAIN A CONSISTENT DEPTH.
5. SEDIMENT TRACKED ONTO PAVED ROADS IS TO BE REMOVED THROUGHOUT THE DAY AND AT THE END OF THE DAY BY SHOVELING OR SWEEPING. SEDIMENT MAY NOT BE WASHED DOWN STORM SEWER DRAINS.

NOTE: MANY JURISDICTIONS HAVE BMP DETAILS THAT VARY FROM UDFCD STANDARD DETAILS. CONSULT WITH LOCAL JURISDICTIONS AS TO WHICH DETAIL SHOULD BE USED WHEN DIFFERENCES ARE NOTED.

(DETAILS ADAPTED FROM CITY OF BROOMFIELD, COLORADO, NOT AVAILABLE IN AUTOCAD)

URS

URS Group, Inc.
An AECOM Company

PROJECT

PFOS / PFOA DRINKING WATER MITIGATION SYSTEM

Security Water District (SWD)

CLIENT

USACE Omaha District

1616 Capital Ave.
Omaha, NE 68102

CONSULTANT

URS Group, Inc.
12120 Shamrock Plaza
Omaha, NE 68154
T +1 (402) 334 8181. F +1 (402) 334 1984

ISSUE/REVISION		
A	04/24/19	REV 1 SWMP
I/R	DATE	DESCRIPTION

PROJECT NUMBER

Project Number: 60589841

SHEET TITLE

SWMP LEGEND AND BMP DETAILS 3

SHEET NUMBER

G-224