

Service Detail

4365 INTERSTATE 25, SIGN



(E1C) Electric Commercial Charge: **\$63.97**

Service Detail for 12/12/23 - 01/10/24 (30 days)

Meter Number: 416359

Reading 01/11/24 43339

Reading 12/11/23 42940

399 kWh

Your average daily usage was 13.30 kWh

Charges Detail

Access Charge: 20 days x \$0.5103	\$10.21
Access Charge: 10 days x \$0.6007	\$6.01
Access Charge: 266 kWh x \$0.0777	\$20.67
Access Charge: 133 kWh x \$0.0823	\$10.95
Electric Cost Adjustment: 399 kWh x \$0.0284	\$11.33
Capacity Charge: 399 kWh x \$0.0042	\$1.68
County Sales Tax: 1.23% x \$60.85	\$0.75
State Sales Tax: 2.9% x \$60.85	\$1.76
PPRTA Tax: 1% x \$60.85	\$0.61
Total:	\$63.97

Service Detail

4365 INTERSTATE 25, SIGN



(E1C) Electric Commercial Charge: **\$52.05**

Service Detail for 01/11/24 - 02/09/24 (30 days)

Meter Number: 416359

Reading 02/09/24 43613

Reading 01/11/24 43339

274 kWh

Your average daily usage was 9.13 kWh

Charges Detail

Access Charge: 30 days x \$0.6007 \$18.02

Access Charge: 274 kWh x \$0.0823 \$22.55

Electric Cost Adjustment: 274 kWh x \$0.0284 \$7.78

Capacity Charge: 274 kWh x \$0.0042 \$1.15

County Sales Tax: 1.23% x \$49.50 \$0.61

State Sales Tax: 2.9% x \$49.50 \$1.44

PPRTA Tax: 1% x \$49.50 \$0.50

Total: \$52.05

Service Detail

4305 INTERSTATE 25, SIGN



(E1C) Electric Commercial Charge: **\$38.69**

Service Detail for 12/12/23 - 01/10/24 (30 days)

Meter Number: 416491

Reading 01/11/24 24923

Reading 12/11/23 24739

184 kWh

Your average daily usage was 6.13 kWh

Charges Detail

Access Charge: 20 days x \$0.5103	\$10.21
Access Charge: 10 days x \$0.6007	\$6.01
Access Charge: 123 kWh x \$0.0777	\$9.56
Access Charge: 61 kWh x \$0.0823	\$5.02
Electric Cost Adjustment: 184 kWh x \$0.0284	\$5.23
Capacity Charge: 184 kWh x \$0.0042	\$0.77
County Sales Tax: 1.23% x \$36.80	\$0.45
State Sales Tax: 2.9% x \$36.80	\$1.07
PPRTA Tax: 1% x \$36.80	\$0.37
Total:	\$38.69

Service Detail

4305 INTERSTATE 25, SIGN



(E1C) Electric Commercial Charge: \$38.16

Service Detail for 01/11/24 - 02/09/24 (30 days)

Meter Number: 416491

Reading 02/09/24 25082

Reading 01/11/24 24923

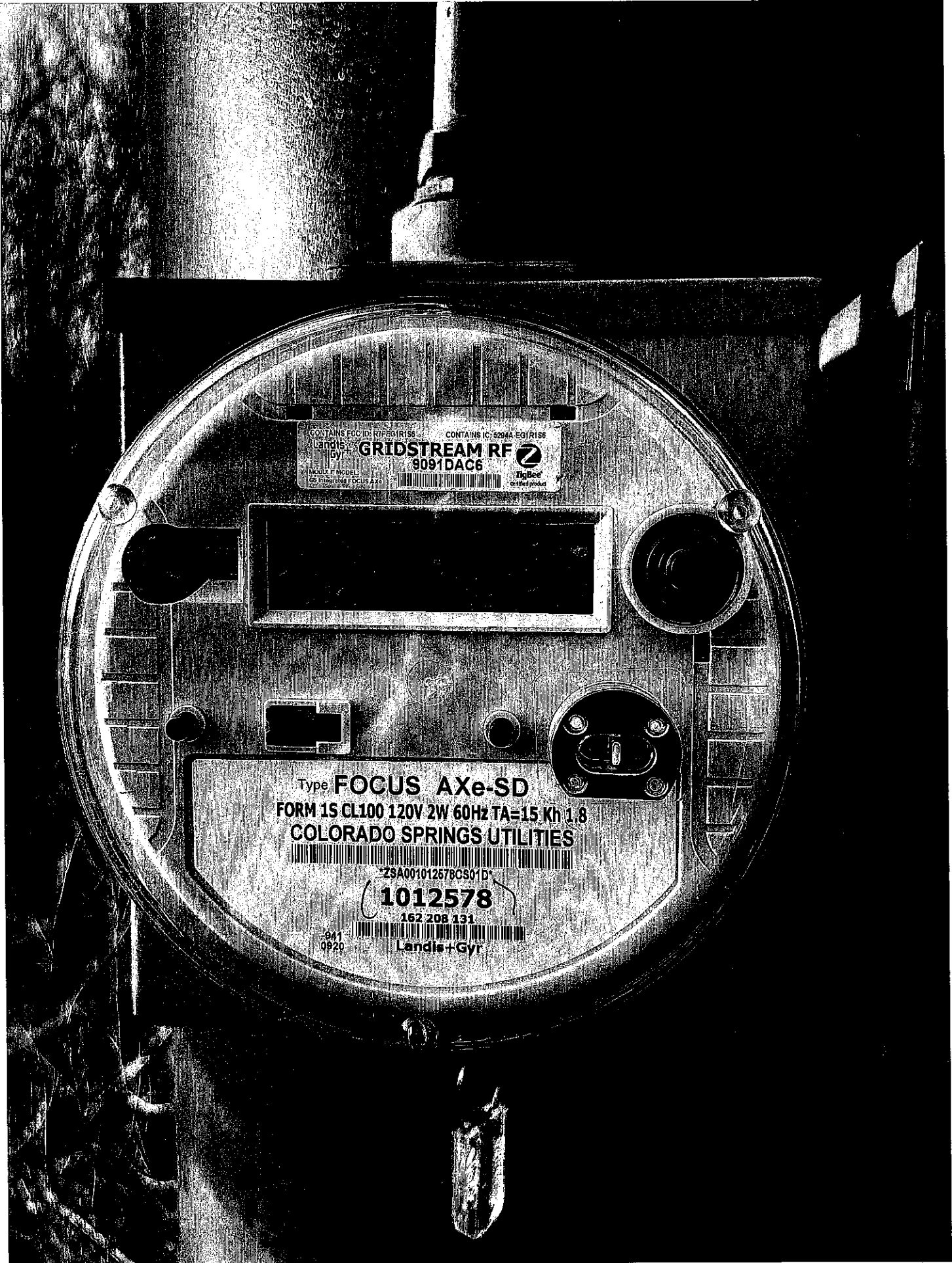
159 kWh

Your average daily usage was 5.30 kWh

Charges Detail

Access Charge: 30 days x \$0.6007	\$18.02
Access Charge: 159 kWh x \$0.0823	\$13.09
Electric Cost Adjustment: 159 kWh x \$0.0284	\$4.52
Capacity Charge: 159 kWh x \$0.0042	\$0.67
County Sales Tax: 1.23% x \$36.30	\$0.45
State Sales Tax: 2.9% x \$36.30	\$1.05
PPRTA Tax: 1% x \$36.30	\$0.36
Total:	\$38.16

TRIVISION - NORTH STRUCTURE



CONTAINS FCC ID: R1PE01R156
Landis+Gyr
by
GRIDSTREAM RF
9091DAC6
ZigBee
certified product

Type **FOCUS AXe-SD**
FORM 1S CL100 120V 2W 60Hz TA=15 Kh 1.8
COLORADO SPRINGS UTILITIES
ZSA001012678C801D
1012578
162 208 131
Landis+Gyr

2 4305

LOTTO - SOUTH STRUCTURE



CONTAINS FCC ID: RTPEG1R156 CONTAINS IC: 5294A-EG1R156
Landis+Gyr **GRIDSTREAM RF** 
9091DC87
MODULE MODEL: 
GS Integrated FOCUS AXe 

Type **FOCUS AXe-SD**
FORM 15 CL100 120V 2W 60Hz TA=15 Kh 1.8
COLORADO SPRINGS UTILITIES



*ZSA001012579CS01D

1012579

162 208 132

-941
0920


Landis+Gyr

4365