

CORE
ENGINEERING GROUP

15004 1ST AVE. SOUTH
BURNSVILLE, MN 55306
CONTACT: RICHARD L. SCHINDLER, P.E.
EMAIL: Rich@cag1.com

DATE: _____

DESCRIPTION: _____

NO. _____

PREPARED FOR:
LORSON RANCH EAST
EAST OF EAST TRIBUTARY OF ICC
EL PASO COUNTY, COLORADO

PROJECT:
LORSON, L.L.C.
212 N. WAHSATCH AVE., SUITE 301
COLORADO SPRINGS, COLORADO 80903
(719) 635-3200
CONTACT: JEFF MARK

DATE: _____

PROJECT NO.
100.040

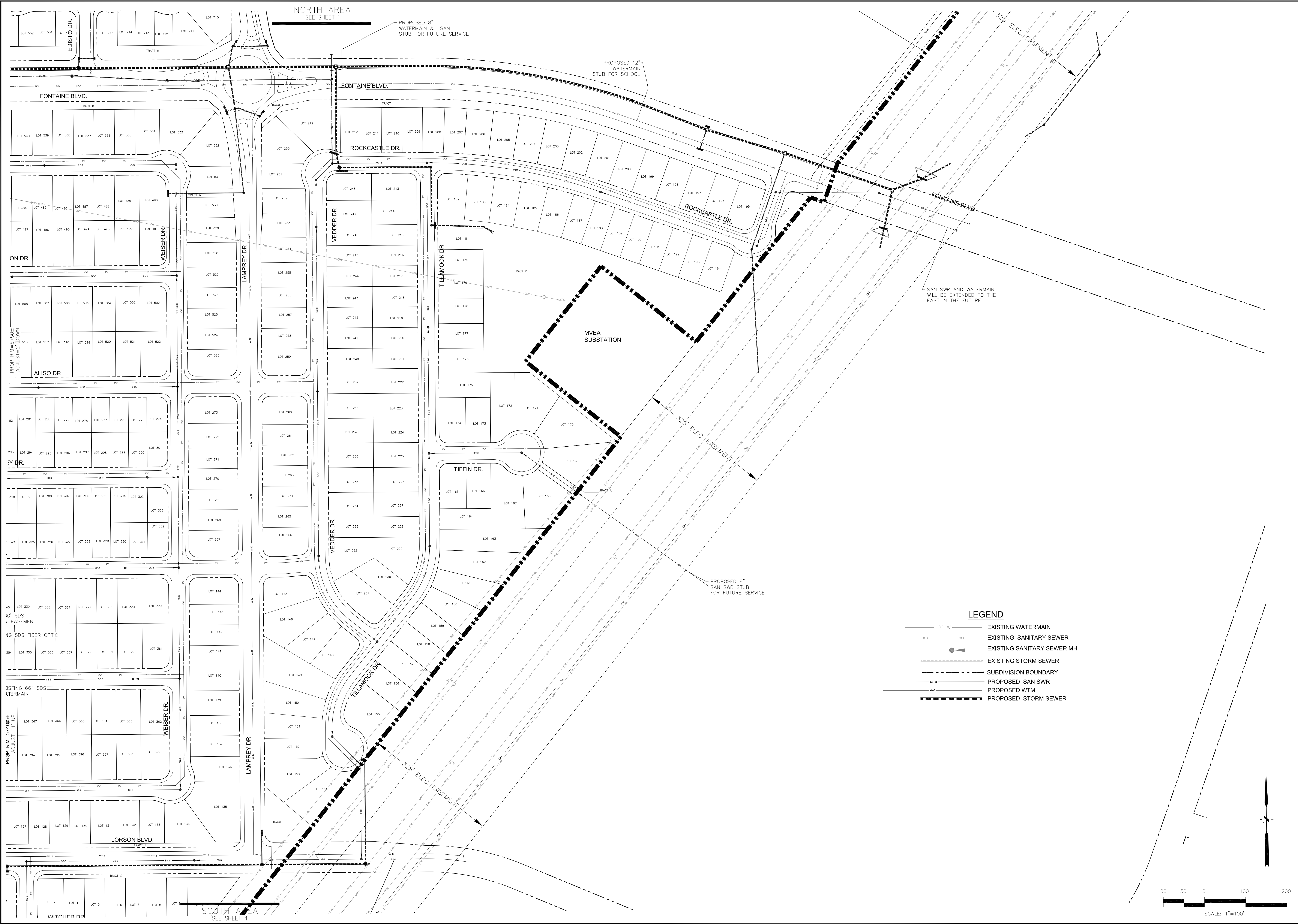
SHEET NUMBER
UT2

DRAWN: RLS
DESIGNED: RLS
CHECKED: RLS

LORSON RANCH EAST
MIDDLE AREA - WEST SIDE
PRELIMINARY UTILITY PLAN

DATE
OCTOBER 20, 2017

TOTAL SHEETS: 6



CORE
ENGINEERING GROUP

15004 1ST AVE. SOUTH
BURNSVILLE, MN 55306
CONTACT: RICHARD L. SCHINDLER, P.E.
EMAIL: Rich@cag1.com

NO.	DATE	DESCRIPTION
PROJECT: LORSON RANCH EAST EAST OF EAST TRIBUTARY OF JCC EL PASO COUNTY, COLORADO		
PREPARED FOR: LORSON, LLC. 212 N. WAHSATCH AVE., SUITE 301 COLORADO SPRINGS, COLORADO 80903 (719) 635-3200 CONTACT: JEFF MARK		
DRAWN: RLS DESIGNED: RLS CHECKED: RLS		

LORSON RANCH EAST
MIDDLE AREA - EAST SIDE
PRELIMINARY UTILITY PLAN

DATE	OCTOBER 20, 2017
PROJECT NO.	100.040
SHEET NUMBER	UT3
TOTAL SHEETS:	6



CORE

ENGINEERING GROUP

15004 1ST AVE. SOUTH
BURNSVILLE, MN 55306
CONTACT: RICHARD L. SCHINDLER, P.E.
EMAIL: Rich@cag1.com

DATE	
DESCRIPTION	
NO.	
PROJECT:	LORSON RANCH EAST EAST OF EAST TRIBUTARY OF JCC EL PASO COUNTY, COLORADO
PREPARED FOR:	LORSON, L.L.C. 212 N. WAHSATCH AVE., SUITE 301 COLORADO SPRINGS, COLORADO 80903 (719) 635-3200 CONTACT: JEFF MARK
DRAWN:	RLS
DESIGNED:	RLS
CHECKED:	RLS

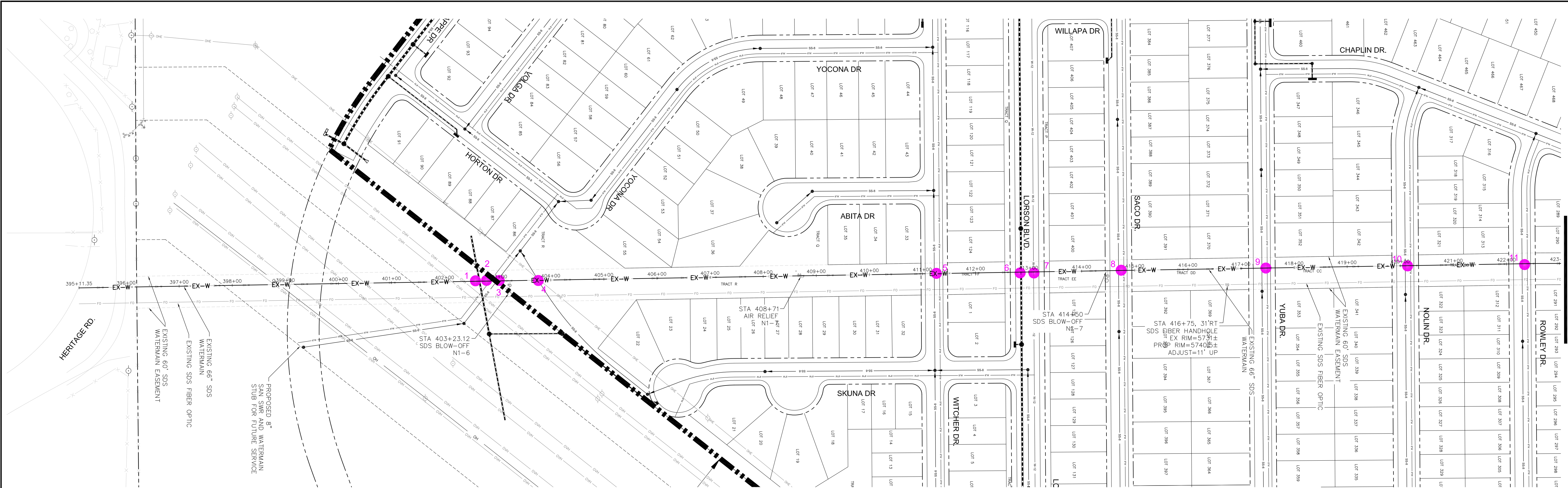
LORSON RANCH EAST
SOUTH AREA
PRELIMINARY UTILITY PLAN

DATE
OCTOBER 20, 2017

PROJECT NO.
100.040

SHEET NUMBER
UT4

TOTAL SHEETS: 6

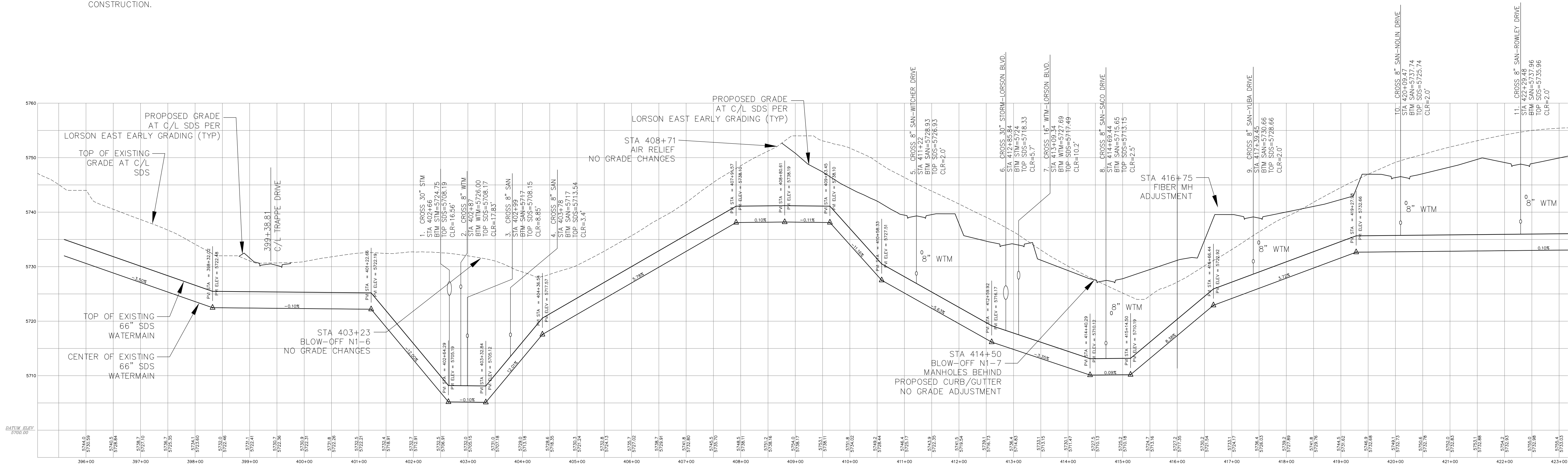
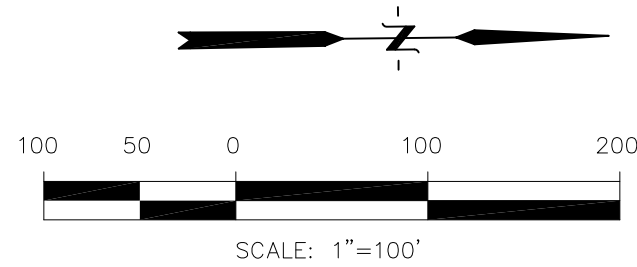


SEE SHEET 6

WORK WITHIN CSU SOUTHERN DELIVERY SYSTEM EASEMENT CONSTRUCTION NOTES

1. CONTRACTOR SHALL COMPLY WITH CSU LESS 2.6.H.8 "CROSSING RAW WATER TRANSMISSION MAINS" FOR ALL WORK WITHIN THE CSU WATERMAIN EASEMENT
2. UTILITIES CROSSING OVER THE SDS WATERMAIN MUST BE POTHOLED WITH HYDRO-VAC AT EVERY CROSSING TO OBTAIN VISUAL VERIFICATIN OF THE WATERMAIN ELEVATION.
3. A COLORADO SPRINGS UTILITIES WATER INSPECTOR SHALL BE NOTIFIED, 719-668-4658, AND PRESENT BEFORE AND DURING CONSTRUCTION ACTIVITIES WITHIN THE SDS EASEMENT
4. CONTACT WAYNE RUST, 719-668-3996, COLORADO SPRINGS UTILITIES, FOR ADDITIONAL INFORMATION REGARDING THE SDS FIBER LINE.
5. CONTRACTOR SHALL MAINTAIN A MINIMUM OF 5' OF COVER OVER THE SDS WATERMAIN.
6. CONTRACTOR SHALL SALVAGE AND REPLACE ALL CARSONITE WATER MARKERS OVER THE WATERMAIN AFTER CONSTRUCTION.

SDS PLAN AND PROFILE



SEE SHEET 6

LORSON RANCH EAST EXISTING SDS PLAN AND PROFILE SAN / STORM / WTM CROSSINGS

DATE
OCTOBER 20, 2017
PROJECT NO.
100.040
SHEET NUMBER
UT5
TOTAL SHEETS: 6

CORE
ENGINEERING GROUP
15004 1ST AVE. SOUTH
BURNSVILLE, MN 55306
CONTACT: RICHARD L. SCHINDLER, P.E.
EMAIL: Rich@cag1.com

DATE
DESCRIPTION
NO.
DRAWN: RLS
DESIGNED: RLS
CHECKED: RLS
PROJECT:
LORSON RANCH EAST
EAST OF EAST TRIBUTARY OF JCC
EL PASO COUNTY, COLORADO
PREPARED FOR:
LORSON, L.L.C.
212 N. WAHSATCH AVE., SUITE 301
COLORADO SPRINGS, COLORADO 80903
CONTACT: JEFF MARK

