

CODE REQUIREMENTS

LANDSCAPE SETBACKS (LS) (LF IS BASED ON DEVELOPED AREA)					
STREET NAME OR ZONE BOUNDARY (ELEV.)	STREET CLASSIFICATION	WIDTH (FT.) REQ./PROV.	LINEAR FOOTAGE	TREE/FEET REQUIRED	NO. OF TREES REQ./PROVIDED
LINDBERGH ROAD	MINOR ARTERIAL	20/20	330	1/25 FT	11/11

MOTOR VEHICLE LOTS (MV)

NO. OF VEHICLE SPACES PROVIDED	SHADE TREES (1/15 SPACES) REQ./PROV.	VEHICLE LOT FRONTAGE(S)	2/3 LENGTH OF FRONTAGE (FT)
80	5/5 RELOCATED FROM SITE	NOT REQUIRED	NOT REQUIRED
MIN. 3' SCREENING PLANTS REQ./PROV.	EVERGREEN PLANTS REQ. 50% PROV.		
NOT REQUIRED	NOT REQUIRED		

INTERNAL LANDSCAPING (IL)

INTERNAL LANDSCAPE AREA INCLUDES ALL LANDSCAPE AREAS NOT INCLUDING SETBACKS, BUFFERS OR MOTOR VEHICLE ISLANDS.

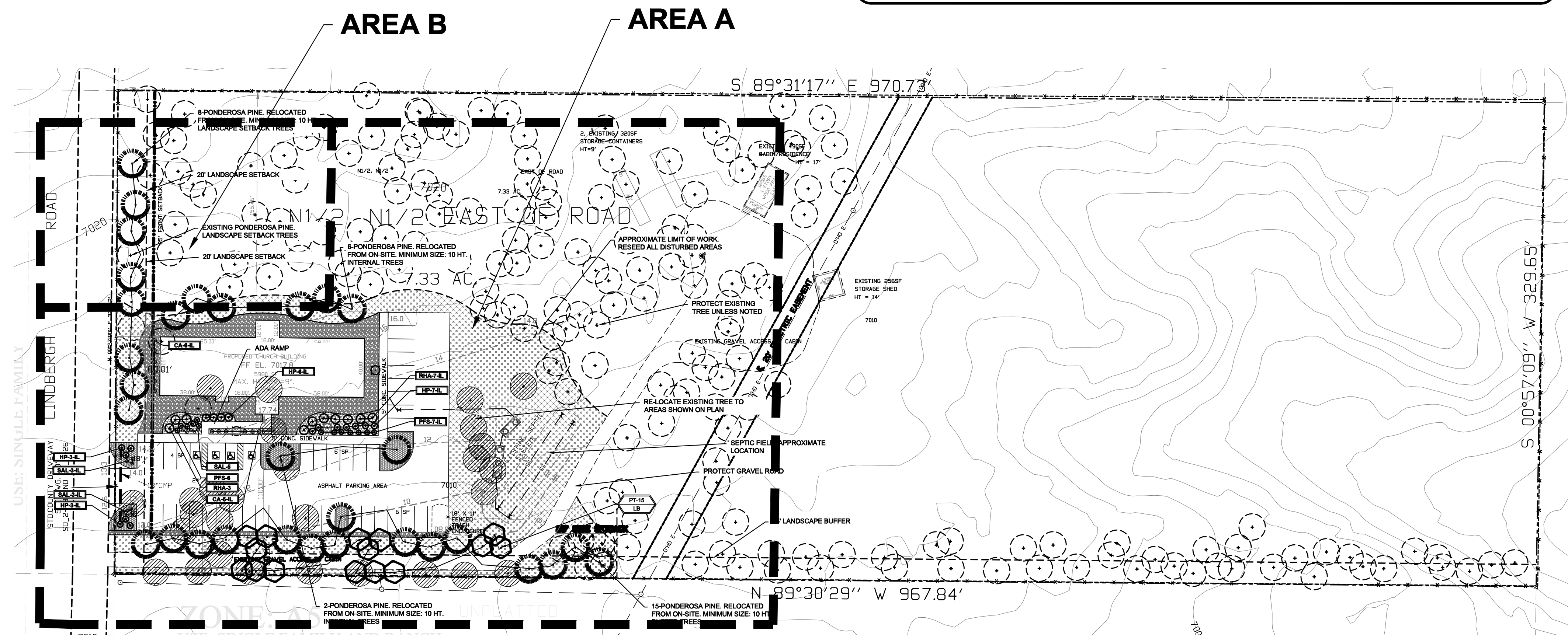
NET SITE AREA (SF) (LESS PUBLIC R.O.W.)	PERCENT MINIMUM INTERNAL AREA (%)	INTERNAL AREA (SF) REQ./PROV.	INTERNAL TREES (1/500 SF) (EXCLUDING DRIVEWAYS)
319,295	NON-RESIDENTIAL	15,965 SF/ 16,000 SF	32/32 EXISTING TREES (INCLUDING RELOCATED)
SHRUB SUBSTITUTES REQ./PROV.		INTERNAL PLANT ABBR. DENOTED ON PLAN	PERCENT GROUND PLANE VEG. REQ./PROV.
30/30		IL	50%/50%

LANDSCAPE BUFFERS AND SCREENS (LB)

STREET NAME OR PROPERTY LINE (ELEV.)	LINEAR FOOTAGE	SETBACK BUFFER REQ./PROV.	BUFFER TREES (1/25') REQ./PROV.	EVERGREEN TREES (1/3) REQ./PROV.
NOT REQUIRED	968 LF	15 LF/30 LF	39/39	17 ALONG DEVELOPMENT AREA

IRRIGATION SYSTEM DESCRIPTION NOTE

AN UNDERGROUND IRRIGATION SYSTEM WITH SURFACE DRIP COMPONENTS WILL BE USED TO IRRIGATE ALL PLANT MATERIAL AS REQUIRED PER PLAN. IRRIGATION SYSTEM TO BE DESIGN/BUILD. AS-BUILT PLAN SHALL BE PROVIDED TO OWNER ONCE INSTALLATION IS COMPLETE AND APPROVED.



OVERALL LANDSCAPE PLAN



NOT TO SCALE

UTILITIES NOTE

VERIFY LOCATION AND DEPTH OF ALL UNDERGROUND UTILITIES PRIOR TO START OF WORK. CALL 811 FOR UTILITY LOCATES. ANY CONFLICT BETWEEN TREE LOCATIONS AND UTILITIES SHOWN ON PLANS SHALL BE RESOLVED WITH GENERAL CONTRACTOR PRIOR TO PLANTING. ALL ELECTRICAL VAULTS AND TRANSFORMERS SHALL BE KEPT CLEAR FROM PLANT MATERIAL PER LOCAL CODE AND ALL SHRUBS TO BE LOCATED MINIMUM 3' CLEAR OF ALL FIRE HYDRANTS AT MATURE SIZE. REFER TO LOCAL CODES.

DOCUMENT NOTE

IRRESPECTIVE OF ANY OTHER TERM IN THIS DOCUMENT, LANDSCAPE ARCHITECT SHALL NOT CONTROL OR BE RESPONSIBLE FOR CONSTRUCTION MEANS, METHODS, TECHNIQUES, SCHEDULES, SEQUENCES OR PROCEDURES, OR FOR CONSTRUCTION SAFETY OR ANY OTHER RELATED PROGRAMS, OR FOR ANOTHER PARTIES' ERRORS OR OMISSIONS OR FOR ANOTHER PARTIES' FAILURE TO COMPLETE THEIR WORK OR SERVICES IN ACCORDANCE WITH LANDSCAPE ARCHITECTS' DOCUMENTS.

NOT FOR CONSTRUCTION

JOB NUMBER 946-20

REVISIONS	
7-14-21	PER UPDATED SITE PLAN

ORIGINAL DATE	0 23 20
---------------	---------

DRAWN BY JM

DESCRIPTION
**LANDSCAPE
PLAN**

SHEET NO. **L1.1**

HIGHER GROUND DESIGNS, INC.
LANDSCAPE ARCHITECTURE, PLANNING & IRRIGATION DESIGN

LANDSCAPE ARCHITECTURE, PLANNING & IRRIGATION DESIGN

**3350 NORTH ACADEMY BLVD. STE. 207
COLORADO SPRINGS, CO 80918
Phone 719-477-1646
Fax 719-268-1122**



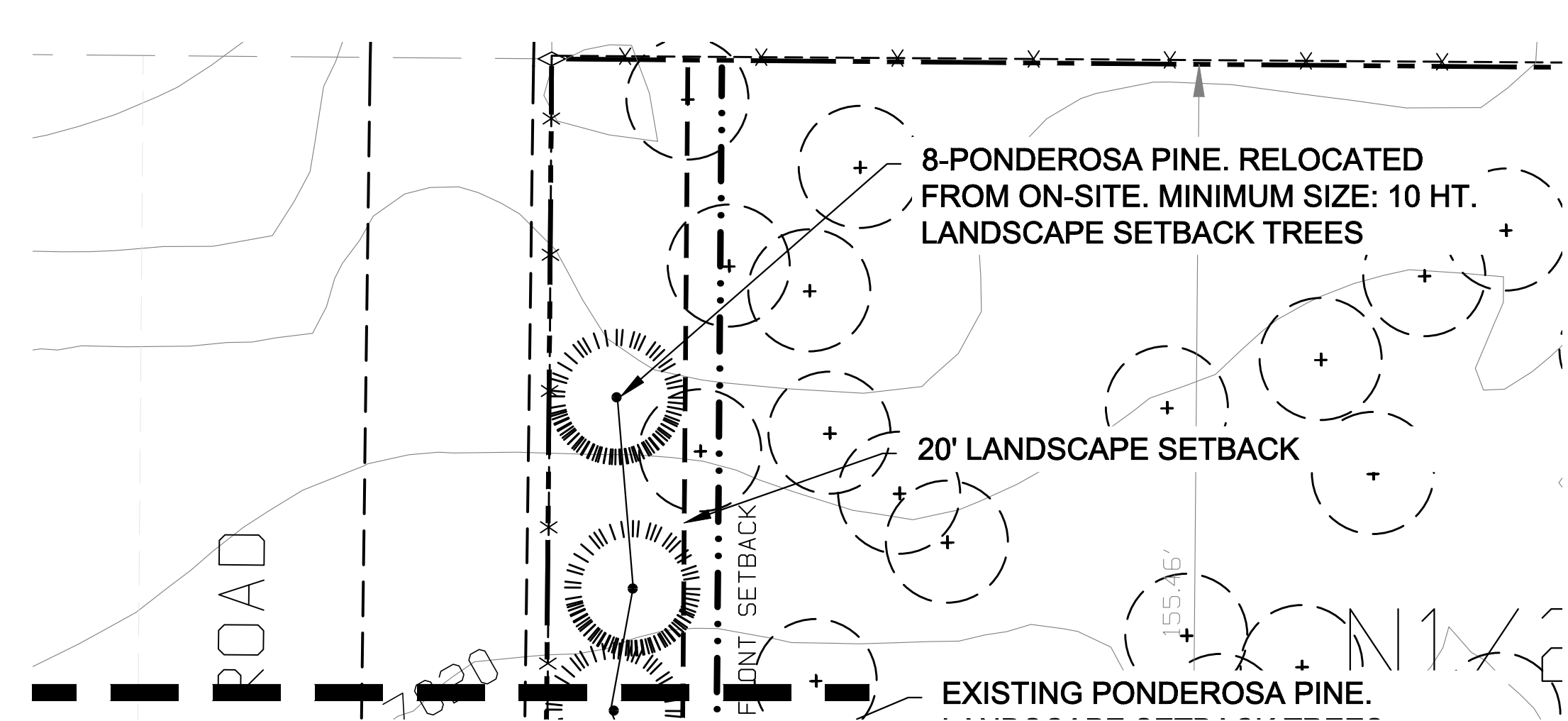
HIGHER GROUND
—DESIGNS—

FUEL CHURCH PROJECT

**16965 LINDBERGH ROAD
EL PASO COUNTY, COLORADO**

PREPARED FOR:

THESE DRAWINGS ARE THE PROPERTY OF HIGHER GROUND DESIGNS, INC. AND SHALL NOT BE USED FOR ANY OTHER PURPOSE WITHOUT WRITTEN AUTHORIZATION BY HIGHER GROUND DESIGNS, INC. THESE DRAWINGS ARE NOT FOR CONSTRUCTION.



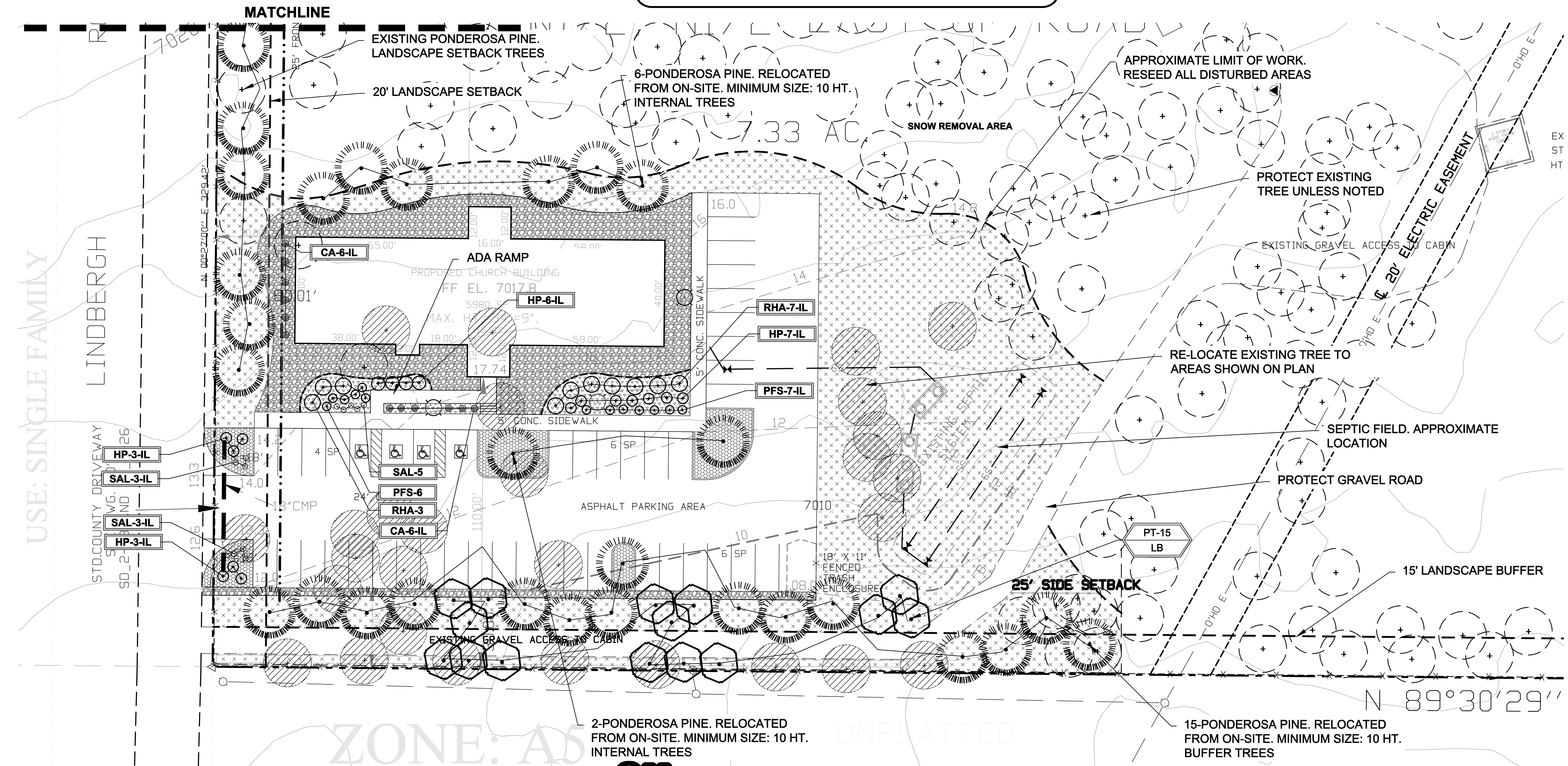
AREA-B

GROUND COVER LEGEND		
SYMBOL	DESCRIPTION	APPROX. SF
	Denver Granite Rock: 1.5" Diameter, 3" DEPTH (with weed barrier) or owner approved equal approved by El Paso County	2,795 SF
	Arkansas Tan Rock: 1.5" Diameter, 3" DEPTH (with weed barrier) or owner approved equal approved by El Paso County	2,649 SF
	ROCK COBBLE	10,526 SF
	Grass Seed - Mix 'A'	37,118 SF
	Steel Edger. See notes	
	4-8" Dia. Arkansas Tan Cobble Edge between rock types	
NOTE: ALL QUANTITIES SHALL BE PER PLAN. LEGEND SF ARE FOR REFERENCE ONLY.		

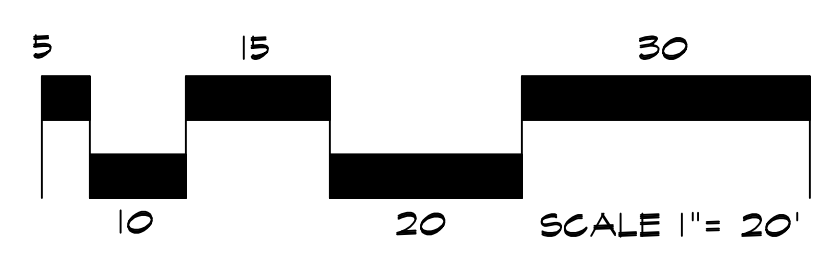
GRADE NOTE

GRADE SHALL BE ESTABLISHED BASED ON GRADING PLAN BY OTHERS, AND FOR LANDSCAPE MATERIALS PER PLAN. FINAL SOIL GRADE FOR 5-12" DIAMETER ROCK AREAS SHALL BE 4" BELOW TOP OF SIDEWALK/CURB/PAVING. AT ALL OTHER ROCK AREAS GRADE SHALL BE 3" BELOW SIDEWALK/CURB. AT SOD/SEED AREAS GRADE SHALL BE 1" BELOW TOP OF SIDEWALK/CURB.

PLANT SCHEDULE					
Symbol	Abbr.	Quantity	Botanical Name	Common Name	Mature Wdth/Hght Size
EVERGREEN TREES:					
		32	Existing re-located Ponderosa Pine trees		
	PT	15	Populus tremuloides	Quaking Aspen	15'x40' Caliper 1"-2" varies
DECIDUOUS SHRUBS:					
	SM	4	Syringa meyeri palibin	Dwarf Korean Lilac	4-5' x 3-5' 5 gal.
	HP	13	Hesperaloe parviflora	Red Yucca	2-4' / 2-4' 5 gal.
	RHA	10	Rhus aromatica 'Gro-low'	Sumac Gro-Low	5-7' x 2-3' 5 gal.
	PFS	13	Potentilla fruticosa 'Sutter's Gold'	Sutter's Gold	2' x 3' 5 gal.
PERENNIALS:					
	SAL	11	Salvia nemorosa 'May Night'	May Night Salvia	24 x 24" #1 CONT.
ORNAMENTAL GRASSES:					
	CA	12	Calamagrostis acutiflora 'Karl Foerster'	Feather Reed Grass	1-3' / 2-3' #1 CONT.



LANDSCAPE PLAN
AREA-A



UTILITIES NOTE

VERIFY LOCATION AND DEPTH OF ALL UNDERGROUND UTILITIES PRIOR TO START OF WORK. CALL 811 FOR UTILITY LOCATES. ANY CONFLICT BETWEEN TREE LOCATIONS AND UTILITIES SHOWN ON PLANS SHALL BE RESOLVED WITH GENERAL CONTRACTOR PRIOR TO PLANTING. ALL ELECTRICAL VAULTS AND TRANSFORMERS SHALL BE KEPT CLEAR FROM PLANT MATERIAL PER LOCAL CODE AND ALL SHRUBS TO BE LOCATED MINIMUM 3' CLEAR OF ALL FIRE HYDRANTS AT MATURE SIZE. REFER TO LOCAL CODES.

DOCUMENT NOTE

IRRESPECTIVE OF ANY OTHER TERM IN THIS DOCUMENT, LANDSCAPE ARCHITECT SHALL NOT CONTROL OR BE RESPONSIBLE FOR CONSTRUCTION MEANS, METHODS, TECHNIQUES, SCHEDULES, SEQUENCES OR PROCEDURES, OR FOR CONSTRUCTION SAFETY OR ANY OTHER RELATED PROGRAMS, OR FOR ANY OTHER PARTIES' ERRORS OR OMISSIONS OR FOR ANY OTHER PARTIES' FAILURE TO COMPLETE THEIR WORK OR SERVICES IN ACCORDANCE WITH LANDSCAPE ARCHITECT'S DOCUMENTS.

NOT FOR CONSTRUCTION	JOB NUMBER	946-20
	REVISIONS	
	7-14-21	PER UPDATED SITE PLAN
	ORIGINAL DATE	9-23-20
	DRAWN BY	JM
DESCRIPTION	LANDSCAPE PLAN	
	SHEET NO.	L1.2

HIGHER GROUND DESIGNS, INC.
LANDSCAPE ARCHITECTURE, PLANNING & IRRIGATION DESIGN
5350 NORTH ACADEMY BLVD., STE. 207
COLORADO SPRINGS, CO 80918
Phone 719-477-1646
Fax 719-586-1122



FUEL CHURCH PROJECT
16965 LINDBERGH ROAD
EL PASO COUNTY, COLORADO

THESE DRAWINGS ARE THE PROPERTY OF HIGHER GROUND DESIGNS, INC. AND SHALL NOT BE USED FOR ANY OTHER PROJECT WITHOUT THE WRITTEN AUTHORIZATION BY HIGHER GROUND DESIGNS, INC. THESE DRAWINGS ARE NOT FOR CONSTRUCTION.

PREPARED FOR:

