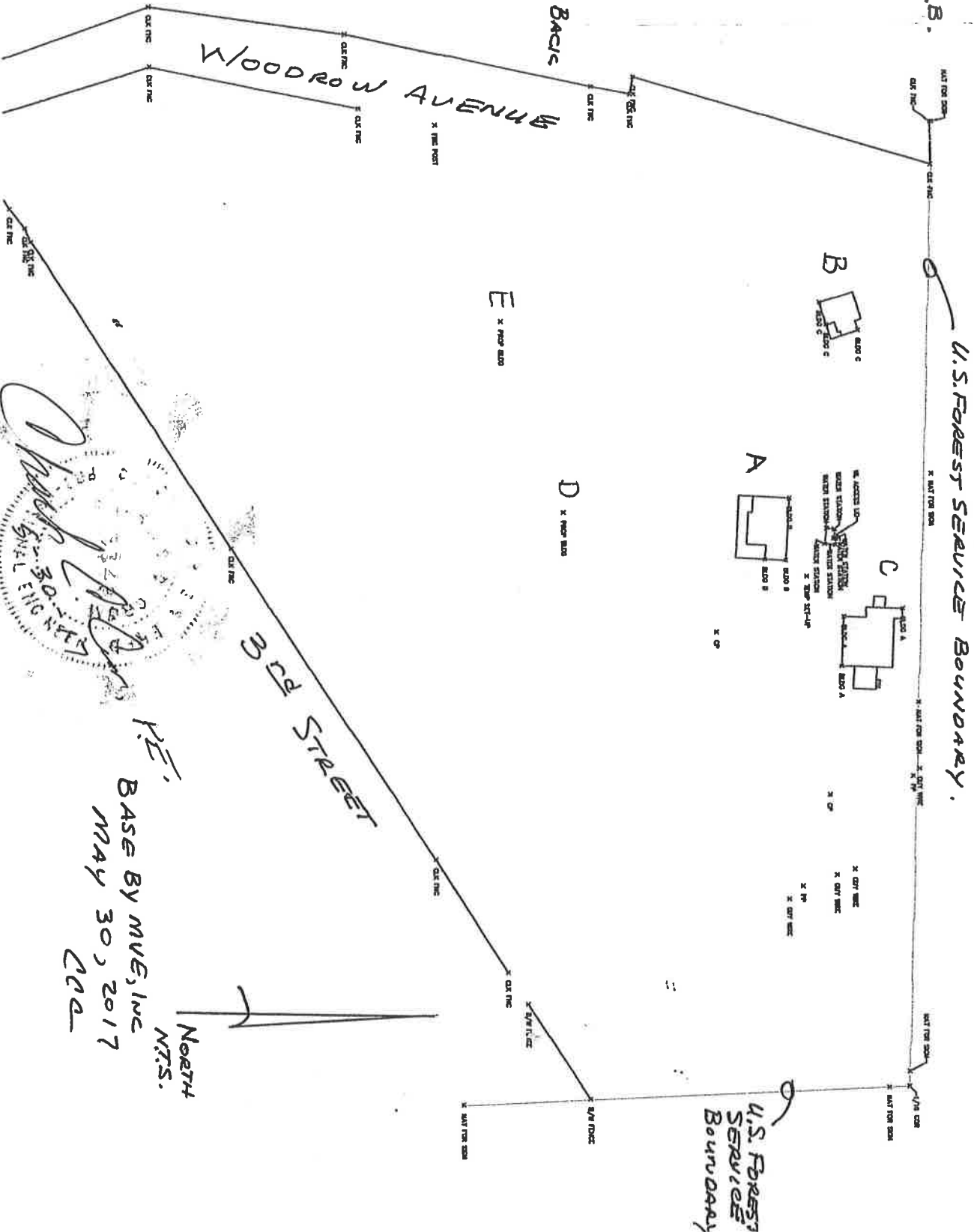


PROPERTY SURVEY

Proposed changes to site:

- A. Remove this cabin 66.4' S.B.
- B. This cabin becomes shed for storage 34.0' S.B.
- C. Finish rehabilitating this cabin 8.8' S.B.
- D. Site of new cabin - Approximately 34' x 34'
- E. Site of new cabin - Approximately 34' x 34'

S.B. = Existing Set-Backs



Charles E. [Signature]
 CIVIL ENGINEER

P.E.
 BASE BY MVE, INC
 MAY 30, 2017
 CCA

NORTH