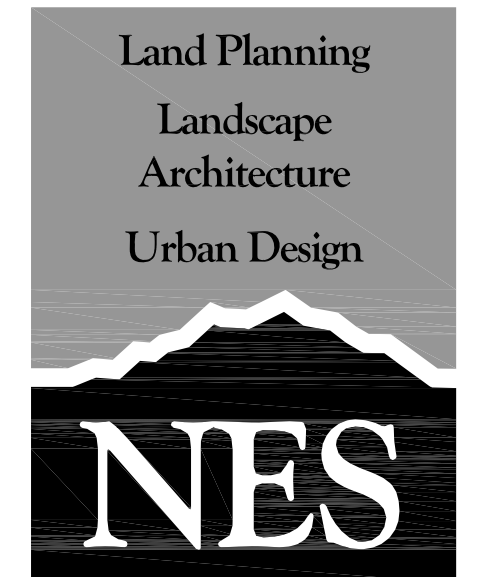


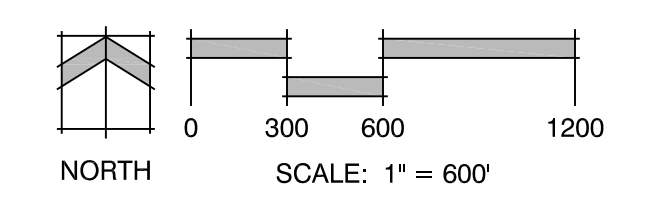
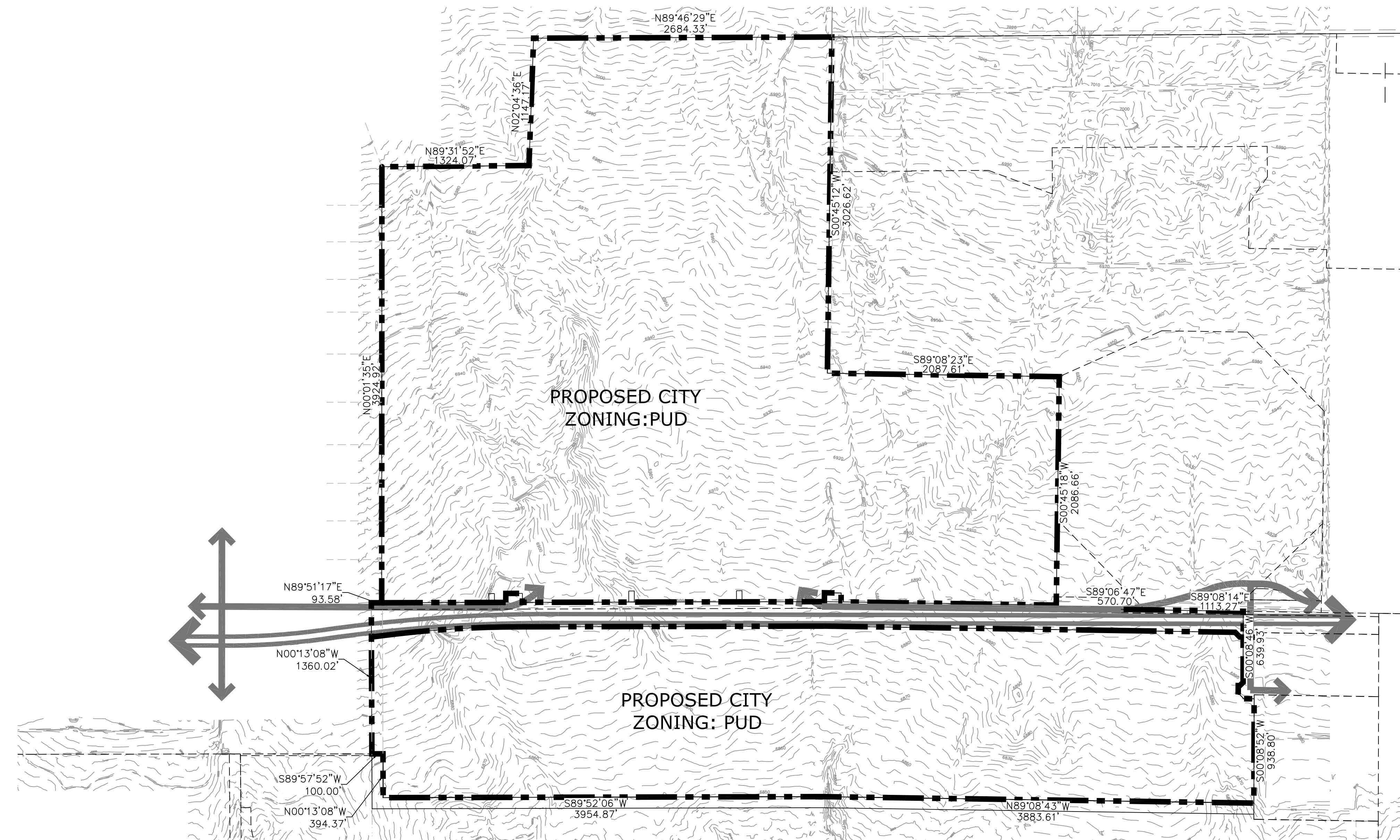
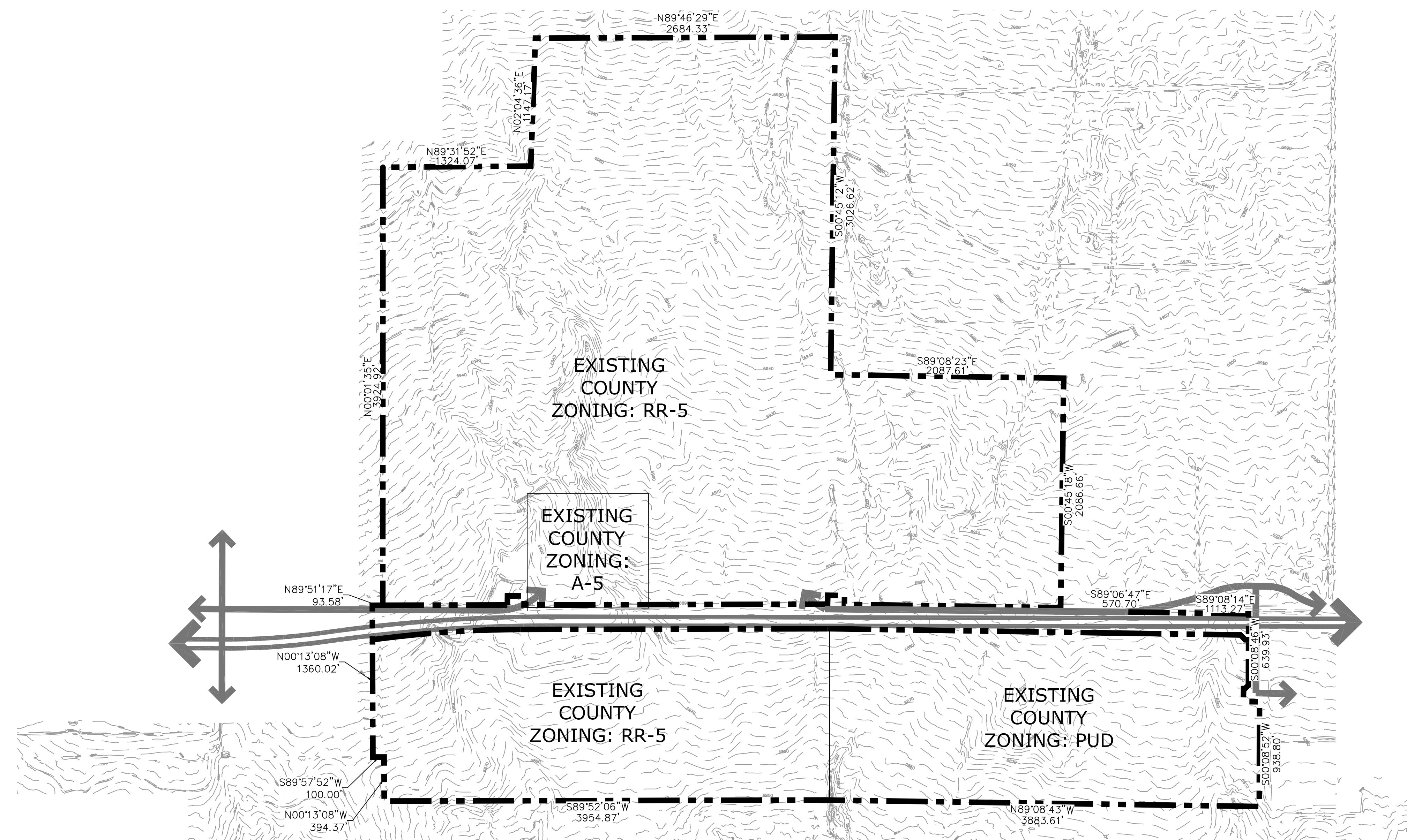
# BANNING LEWIS RANCH NORTH

A PORTION OF SECTIONS 2, 3, 10 AND 11, ALL IN TOWNSHIP 13 SOUTH, RANGE 65 WEST OF THE SIXTH PRINCIPAL MERIDIAN, EL PASO COUNTY, COLORADO  
CITY OF COLORADO SPRINGS, COLORADO  
ZONE CHANGE



N.E.S. Inc.  
619 N. Cascade Avenue, Suite 200  
Colorado Springs, CO 80903  
Tel. 719.471.0073  
Fax 719.471.0267  
www.nescolorado.com

© 2012. All Rights Reserved.



## BANNING LEWIS RANCH NORTH NORWOOD

DATE: 05.30.2019  
PROJECT MGR: A. Barlow  
PREPARED BY: A. Papierski

DATE	BY	DESCRIPTION

## ZONE CHANGE EXHIBIT

**1**  
1 OF 1

CPC #

P:\Norwood\Banning Lewis Ranch North\Drawings\Planning\Norwood\_Banning Lewis Ranch North\_Zoning\_Layout [Zone Change]. 5/30/2019 4:53:19 PM apapierski