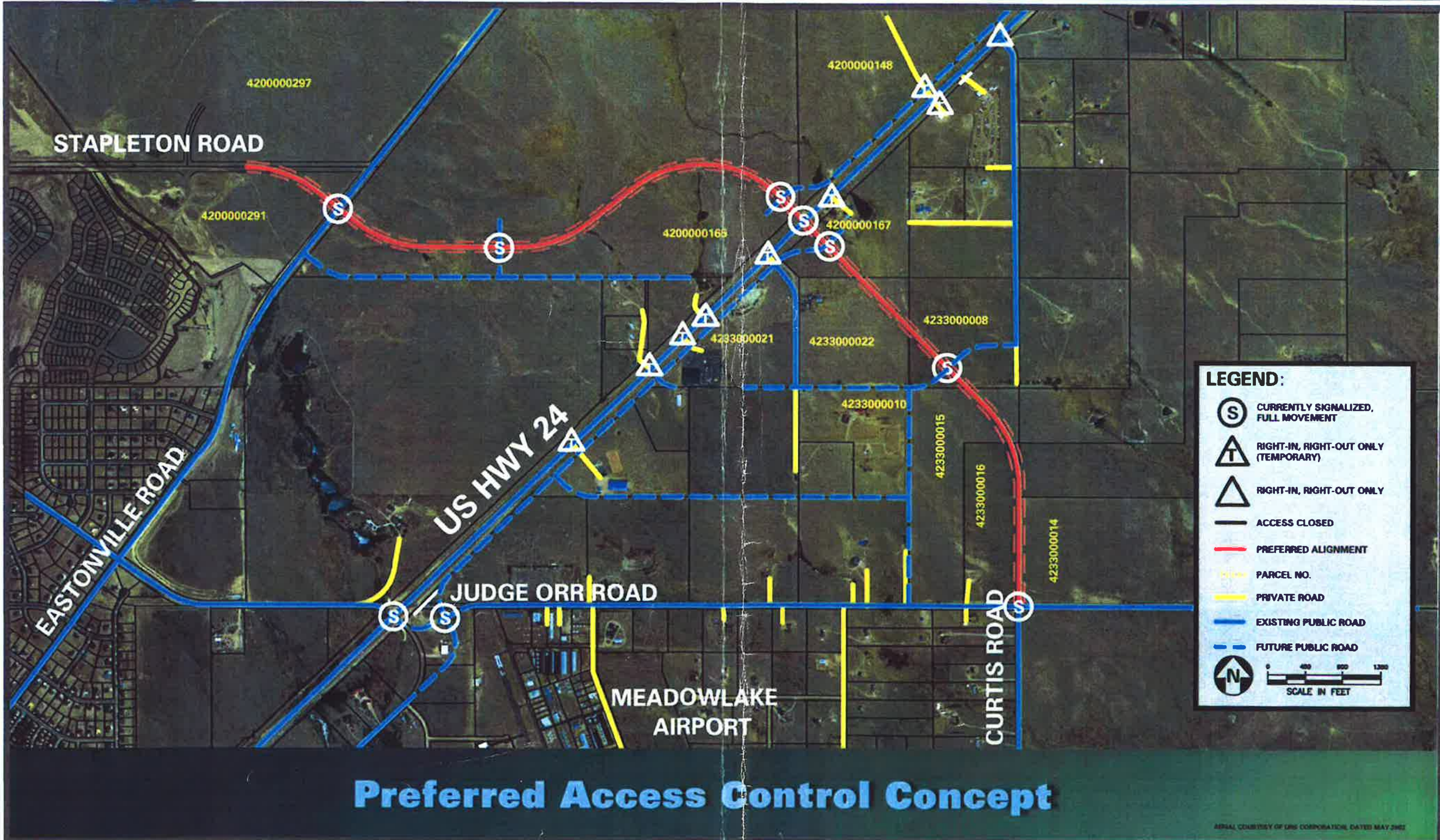




STAPLETON CORRIDOR STUDY



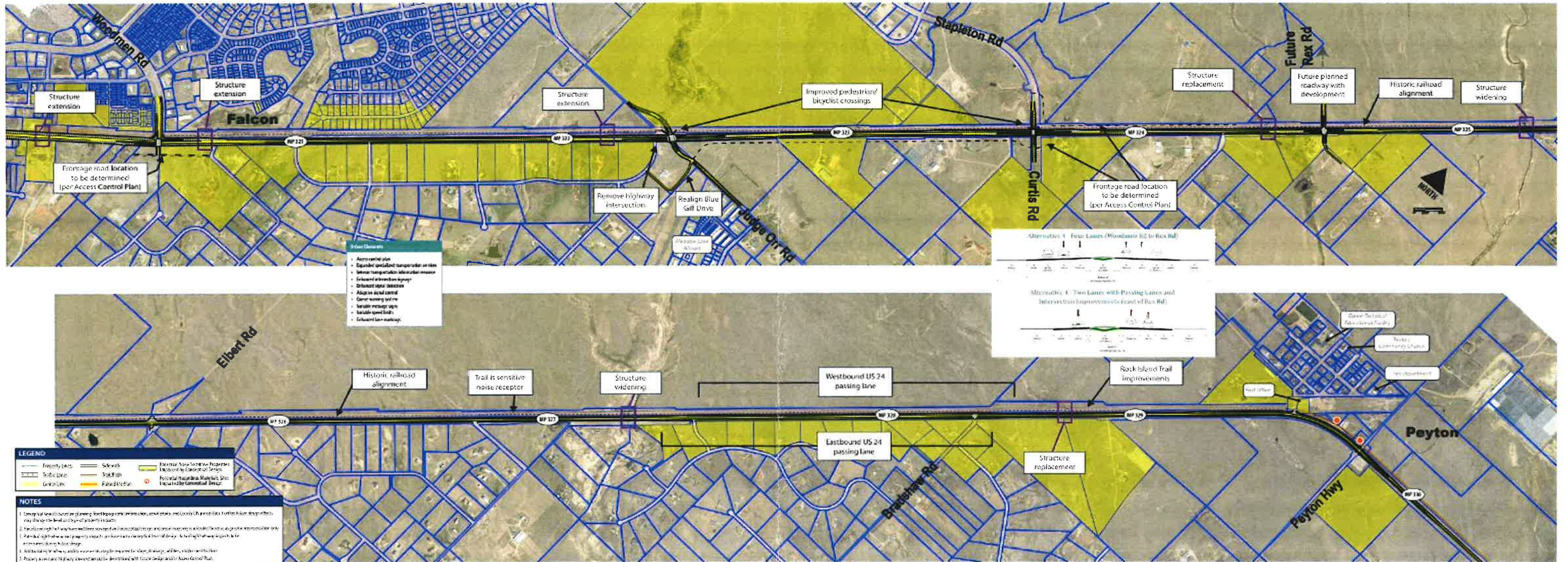
Preferred Access Control Concept

As Approved by the
El Paso County Board
of County Commissioners
Date 12/1/07

AERIAL COURTESY OF LRS CORPORATION, DATED MAY 2002

FALCON TO PEYTON SEGMENT

ALTERNATIVE 4 - FOUR LANES & TWO LANES WITH NEW PASSING LANES & INTERSECTION IMPROVEMENTS





FALCON TO PEYTON SEGMENT - ALTERNATIVE 4

