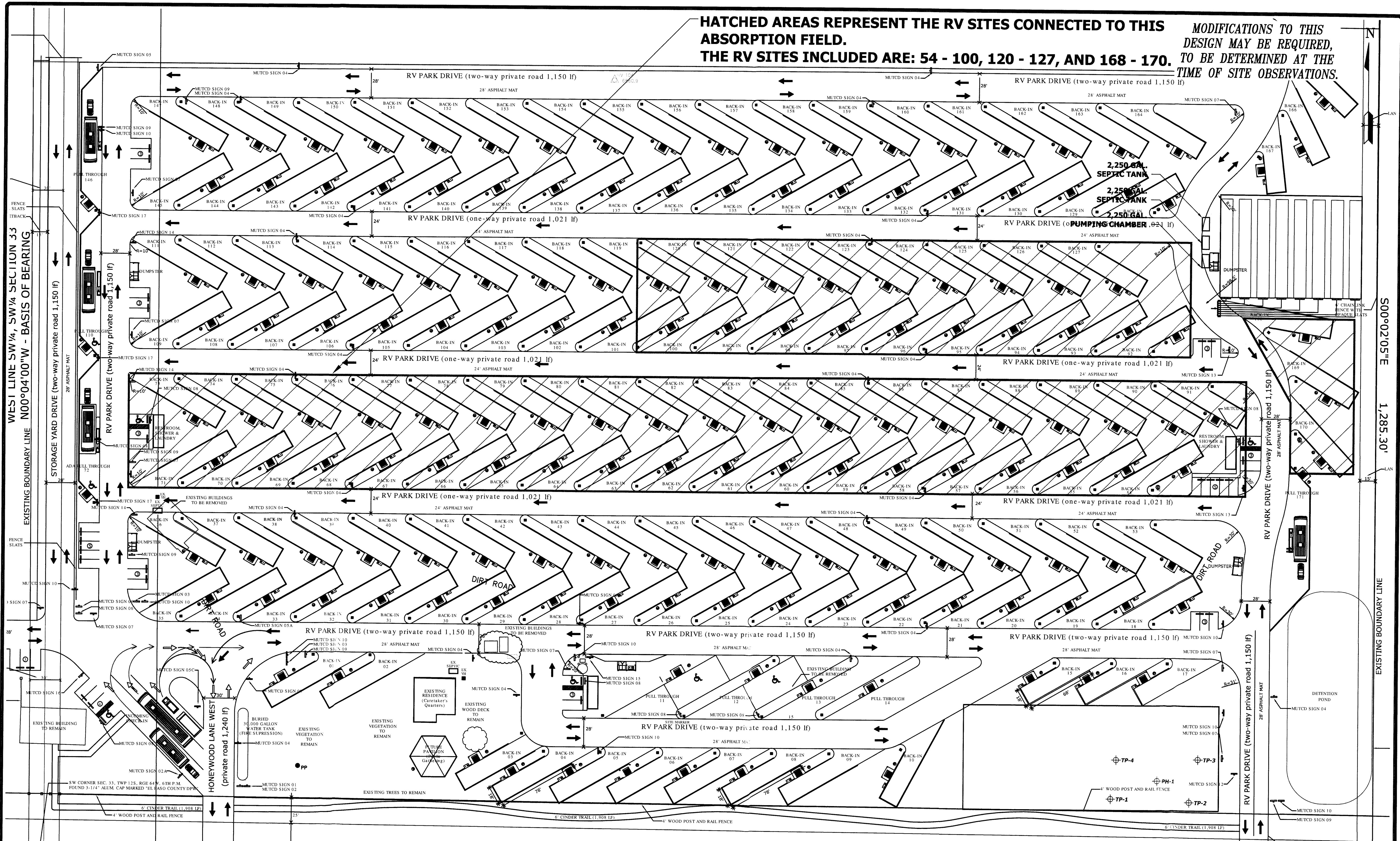


**HATCHED AREAS REPRESENT THE RV SITES CONNECTED TO THIS ABSORPTION FIELD. THE RV SITES INCLUDED ARE: 54 - 100, 120 - 127, AND 168 - 170.**

**MODIFICATIONS TO THIS DESIGN MAY BE REQUIRED, TO BE DETERMINED AT THE TIME OF SITE OBSERVATIONS.**



REVISIONS	BY:

**ENTECH ENGINEERING, INC.**  
 505 ELKTON DRIVE  
 COLORADO SPRINGS, CO. 80907 (719) 531-5599

**ON-SITE WASTEWATER SYSTEM - EAST SYS.**  
**JUDGE ORR ROAD RV PARK - 14010 JUDGE ORR ROAD**  
**EL PASO COUNTY, COLORADO**  
**FOR: WILLIAM GUMAN & ASSOCIATES, LTD.**

DRAWN BY: S. CULP  
 DESIGNED BY: S. CULP  
 CHECKED BY: J. GOODE  
 DATE: 8/16/17  
 SCALE: 1:90  
 JOB NO.: 160533  
 SHEET NO.: 2 OF 4 SHEETS

**NOTE: BUILDERS/ OWNERS SHOULD REVIEW THEIR COVENANTS TO VERIFY IF THERE ARE SETBACK OR LAND-CLEARING RESTRICTIONS THAT MIGHT AFFECT SYSTEM INSTALLATION, PRIOR TO CONSTRUCTION.**

**NOTE: THE CONFIGURATION OF THE DRIP SYSTEM CAN BE ALTERED TO ACCOMMODATE SITE SPECIFIC CONDITIONS AS APPROVED BY ENTECH**

**SITE PLAN**

**NOTE: LOCATE DISTRIBUTION VALVE MANIFOLD AT THE "HIGH POINT" IN THE SYSTEM AND PROVIDE AIR RELEASE VALVE.**

**THE MAXIMUM SOIL COVER OVER THE TOP OF A SEPTIC TANK IS 48" UNLESS OTHERWISE APPROVED BY EL PASO COUNTY**

**ORIENTATION APPROXIMATE; COORDINATE EXACT LOCATION & ORIENTATION WITH ENGINEER ON-SITE, PRIOR TO CLEARING & CONSTRUCTION.**