

# GRADING AND EROSION CONTROL PLAN

## JUDGE ORR ROAD RV PARK AND STORAGE

### EL PASO COUNTY, COLORADO

**OWNER'S STATEMENT:**

THE OWNER WILL COMPLY WITH THE REQUIREMENTS OF THE GRADING AND EROSION CONTROL PLAN.

*Andrea Minnich*  
 PRAIRIE STONE, LLC  
 ANDREA MINNICH, MANAGER

6-18-19  
 DATE

**ENGINEER'S STATEMENT:**

These detailed plans were prepared under my direction and supervision. Said plans and specifications have been prepared in accordance to the criteria established by the County for detailed roadway, drainage, grading and erosion control plans and specifications, and said plan and specifications are in conformity with applicable master drainage plans and master transportation plans. Said plans and specifications meet the purposes for which the particular roadway and drainage facilities are designed and are correct to the best of my knowledge and belief. I accept responsibility for the liability caused by any negligent acts, errors or omissions on my part in preparing these detailed plans and specifications.

*Michael A. Bartusek*  
 MICHAEL A. BARTUSEK  
 23329  
 PROFESSIONAL ENGINEER

**DEVELOPER'S STATEMENT:**

I, the Developer, have read and will comply with all of the requirements specified on this plan.

By: ANDREA MINNICH  
 Title: MANAGER  
 Address: PRAIRIE STONE, LLC  
 9478 DAKOTA DUNES LANE  
 PEYTON, CO 80314-1138

6-18-19  
 Date

Filed in accordance with the El Paso County Land Development Code, Drainage Criteria Manual Volumes 1 and 2, and the Engineering Criteria Manual, as amended.

*Andrea Minnich*  
 Andrea Minnich, Manager

**ENGINEER'S STATEMENT:**

THIS GRADING AND EROSION CONTROL PLAN WAS PREPARED UNDER MY DIRECTION AND SUPERVISION AND IS CORRECT TO THE BEST OF MY KNOWLEDGE AND BELIEF. SAID PLAN HAS BEEN PREPARED ACCORDING TO THE CRITERIA ESTABLISHED BY THE COUNTY FOR GRADING AND EROSION CONTROL PLANS. I ACCEPT RESPONSIBILITY FOR ANY LIABILITY CAUSED BY ANY NEGLIGENT ACTS, ERRORS OR OMISSIONS ON MY PART IN PREPARING THIS PLAN.

*Michael A. Bartusek*  
 MICHAEL A. BARTUSEK  
 23329  
 ASSOCIATED DESIGN PROFESSIONAL ENGINEER

6/16/19  
 Date

**EL PASO COUNTY:**

COUNTY PLAN REVIEW IS PROVIDED ONLY FOR GENERAL CONFORMANCE WITH COUNTY DESIGN CRITERIA. THE COUNTY IS NOT RESPONSIBLE FOR THE ACCURACY AND ADEQUACY OF THE DESIGN, DIMENSIONS, AND/OR ELEVATIONS WHICH SHALL BE CONFIRMED AT THE JOB SITE. THE COUNTY THROUGH THE APPROVAL OF THIS DOCUMENT ASSUMES NO RESPONSIBILITY FOR COMPLETENESS AND/OR ACCURACY OF THIS DOCUMENT.

FILED IN ACCORDANCE WITH THE REQUIREMENTS OF THE EL PASO COUNTY LAND DEVELOPMENT CODE, DRAINAGE CRITERIA MANUAL, VOLUMES 1 AND 2, AND ENGINEERING CRITERIA MANUAL AS AMENDED.

IN ACCORDANCE WITH ECM SECTION 1.12, THESE CONSTRUCTION DOCUMENTS WILL BE VALID FOR CONSTRUCTION FOR A PERIOD OF 2 YEARS FROM THE DATE SIGNED BY EL PASO COUNTY ENGINEER. IF CONSTRUCTION HAS NOT STARTED WITHIN THOSE 2 YEARS, THE PLANS WILL NEED TO BE RESUBMITTED FOR APPROVAL, INCLUDING PAYMENT OF REVIEW FEES AT THE PLANNING AND COMMUNITY DEVELOPMENT DIRECTORS DISCRETION.

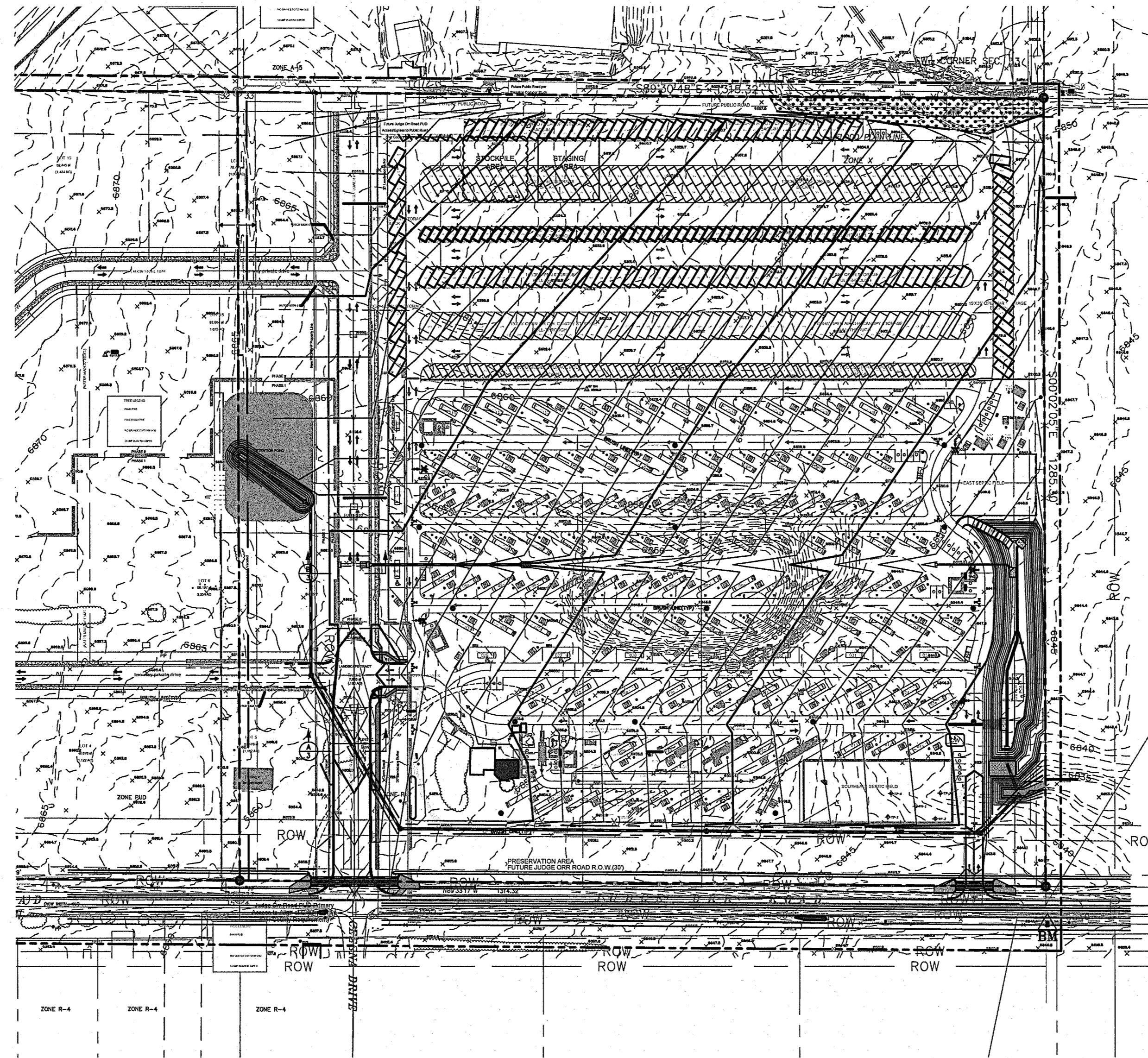
JENIFER IRVINE P.E. \_\_\_\_\_ DATE \_\_\_\_\_  
 COUNTY ENGINEER/ECM ADMINISTRATOR

**LEGEND:**

- PROPOSED MAJOR CONTOUR
- PROPOSED MINOR CONTOUR
- - - EXISTING MAJOR CONTOUR
- - - EXISTING MINOR CONTOUR
- U/G PIPE (MATERIAL AND SIZE AS NOTED)
- (SF) — SF — SILT FENCE
- LIMITS OF CONSTRUCTION
- (CW) CONCRETE WASHOUT
- (VTC) VEHICLE TRACKING CONTROL
- (SBB) STRAW BALE BARRIER
- (IP) INLET PROTECTION
- ⇒ TRAFFIC FLOW ARROWS

**DRAWING INDEX**

ABBR.	NAME	SHEET #/S
DPC	GRADING AND EROSION CONTROL COVER	1 OF 7
DPC	DRAINAGE, GRADING & EROSION CONTROL PLAN	2 OF 7
DPC	DRAINAGE, GRADING & EROSION CONTROL DETAIL	3 OF 7
DPC	DRAINAGE, GRADING & EROSION CONTROL DETAIL	4 OF 7
DPC	EROSION CONTROL DETAILS	5 OF 7
DPC	STANDARD NOTES	6 OF 7
DPC	STORM SEWER PROFILES	7 OF 7



**SITE MAP**

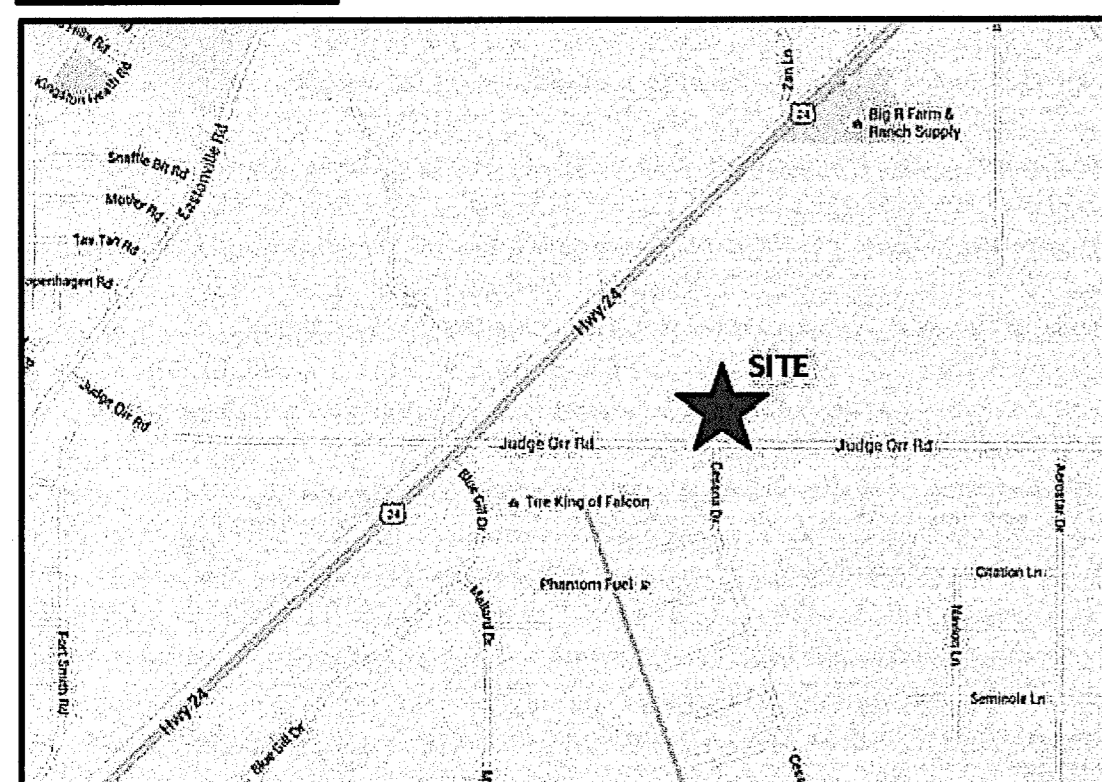
**BENCHMARK**

CONTROL POINT SET ON FENCE LINE, SOUTH SIDE OF JUDGE ORR ROAD FT DUE SOUTH OF EAST PROPERTY LINE. ELEV = 6841.90 (HV100)

**BASIS OF BEARING**

WEST LINE SW 1/4 OF THE SW 1/4 SECTION 33 N00°04' 00"W

**VICINITY MAP:**



DESIGNED BY MAB	PROJECT ENGINEER MAB	PROJECT MANAGER MAB	SCALE: 1" = 60'
DATE: 02/25/19	CAD FILE NO. 160301	DRAWN BY HUG	VERT. N/A

BY	REVISION	NO.	DATE

**JUDGE ORR ROAD RV PARK & STORAGE**  
**COLORADO SPRINGS, COLORADO**  
**DRAINAGE, GRADING & EROSION CONTROL COVER**

**SHEET**  
**1 of 7**

H:\LAND PROJECTS\2016\160301-Judge Orr Road RV Park\DWG\160301-Base.dwg Jim Gill, Tue, 06/18/19 12:52 PM

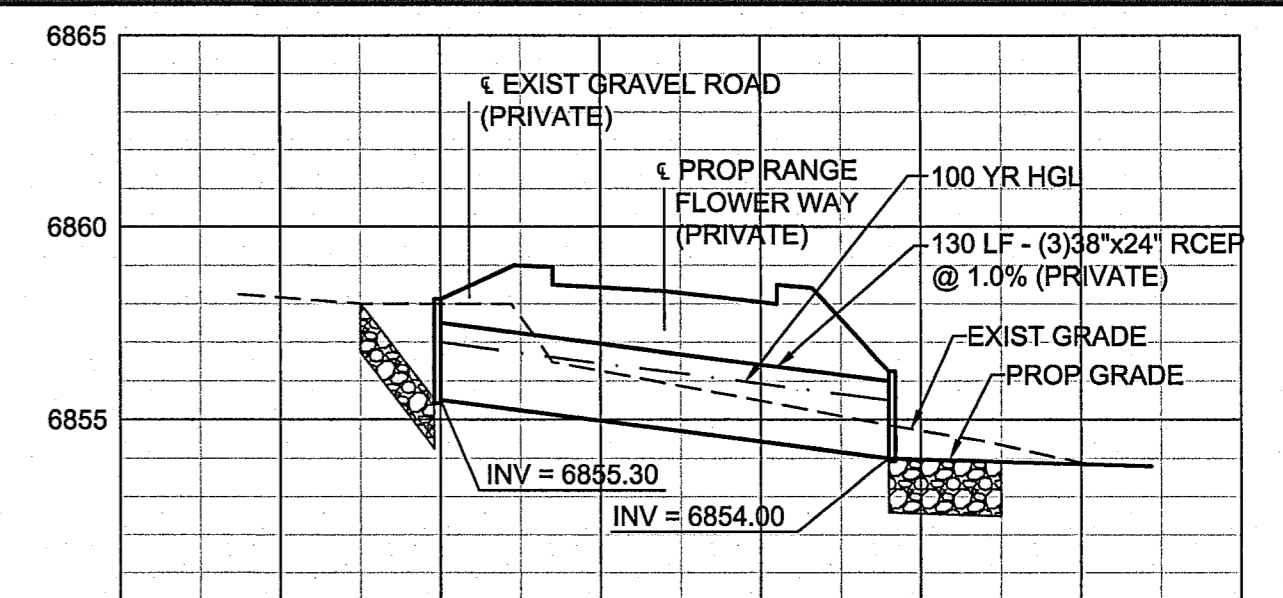
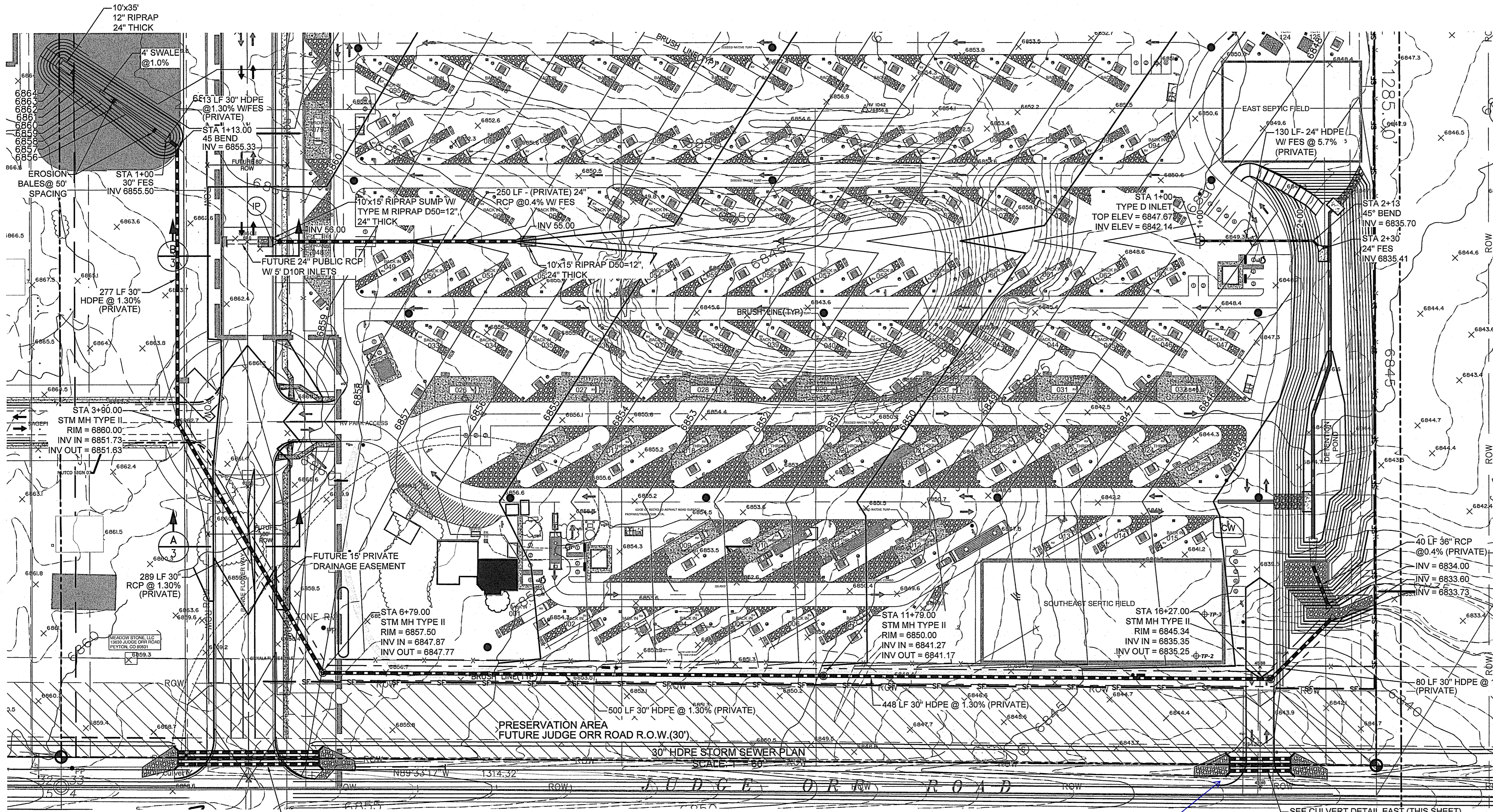




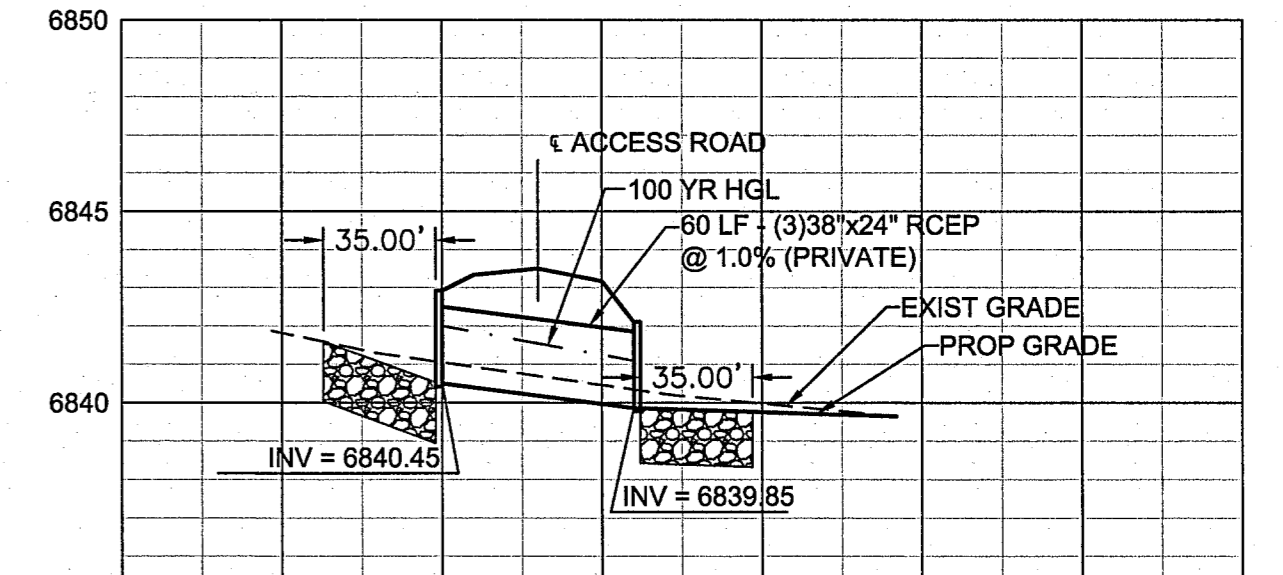




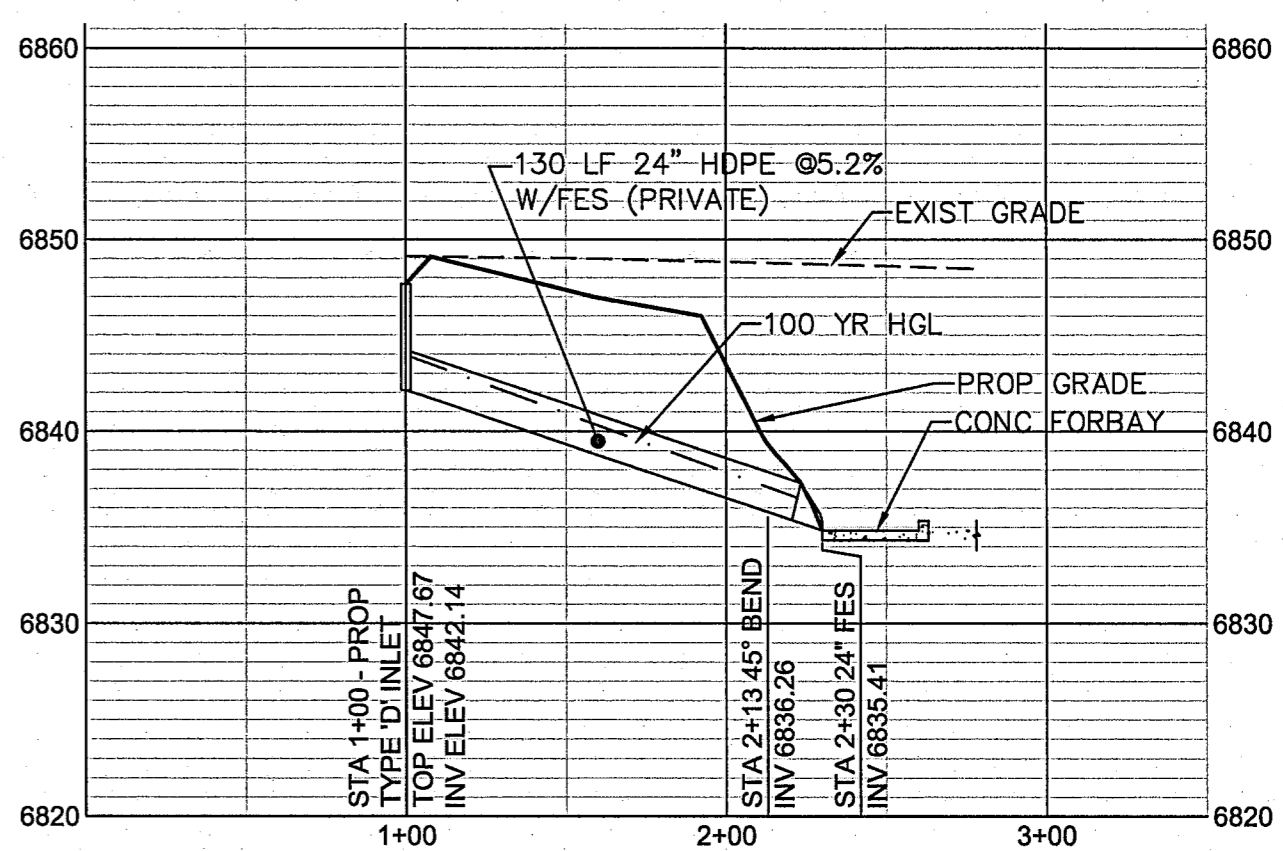




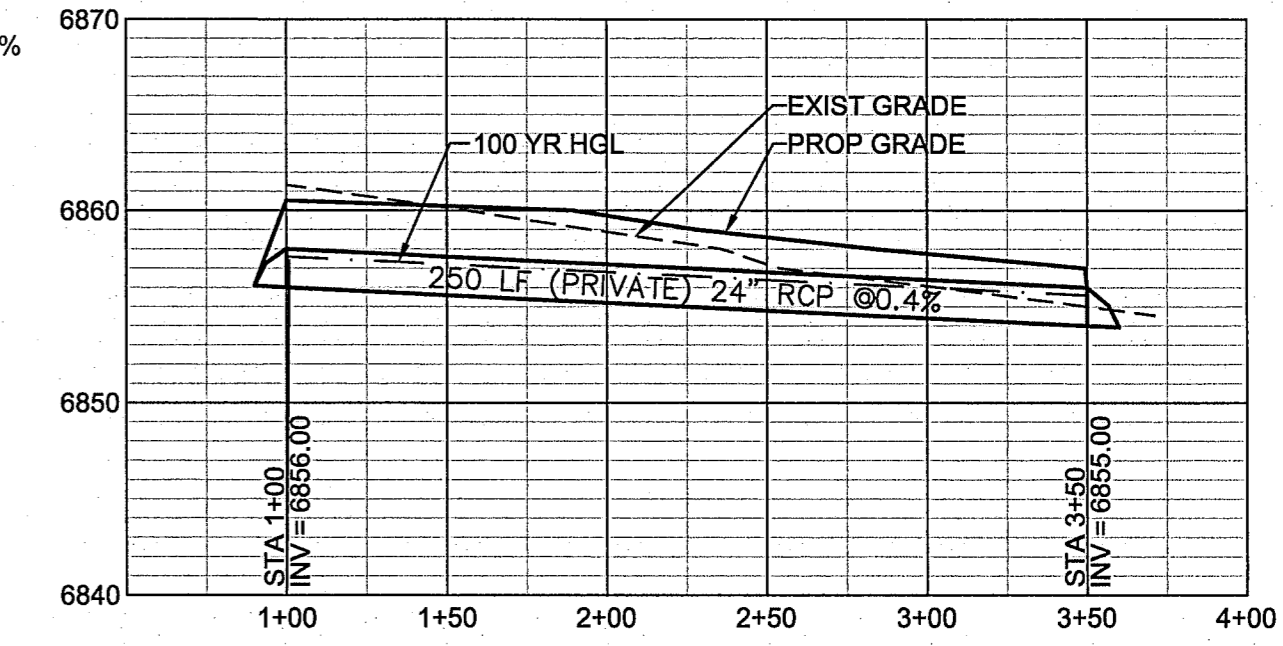
**38"x24" (PRIVATE) RCEP STORM CULVERT WEST PROFILE**  
RANGE FLOWER WAY  
SCALES HORIZONTAL 1"=60' VERTICAL 1"=5'



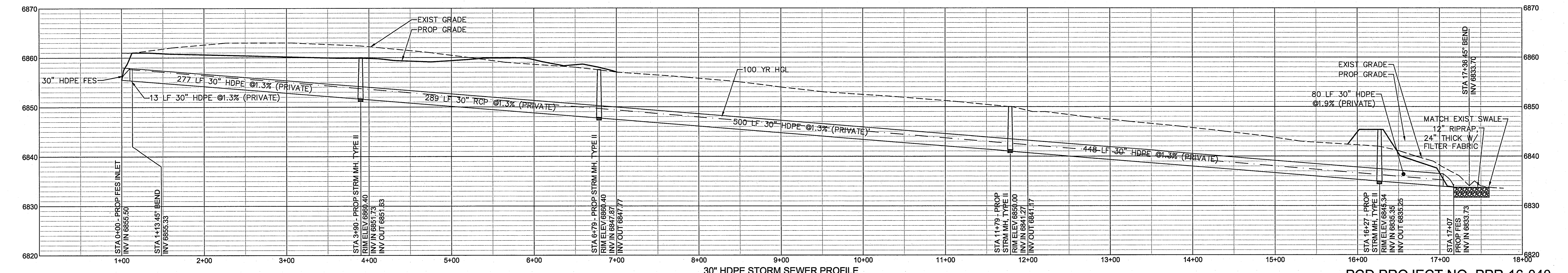
**38"x24" (PRIVATE) RCEP STORM CULVERT EAST PROFILE**  
S. FIRE ACCESS RD  
SCALES HORIZONTAL 1"=60' VERTICAL 1"=5'



**24" HDPE STORM SEWER PROFILE**  
SCALES HORIZONTAL 1"=60' VERTICAL 1"=10'



**24" RCP STORM SEWER PROFILE**  
SCALES HORIZONTAL 1"=60' VERTICAL 1"=10'



provide construction details for wingwalls.  
Unresolved. We will accept CDOT M&S details.

DESIGNED BY: MAB  
PROJECT ENGINEER: MAB  
PROJECT MANAGER: MAB  
DATE: 02/25/19  
JOB NO.: 160301  
CAD FILE NO.: 102571888  
SCALE: N/A  
DRAWN BY: HJG  
VERT: N/A

PREPARED BY:

3520 Austin Bluffs Parkway  
Suite 102  
Colorado Springs, CO 80918  
(719) 269-5212  
fax: (719) 269-5241

NO.	DATE	REVISION	BY

**JUDGE ORR ROAD RV PARK & STORAGE**  
**COLORADO SPRINGS, COLORADO**  
**STORM SEWER PROFILES**

**SHEET**

M:\LAND PROJECTS\2016\160301-Judge Orr Road RV Park\DWG\160301-Storm.dwg Jim.Gill Tue, 06/18/19 12:45 PM

# Markup Summary

dsdlaforce (3)

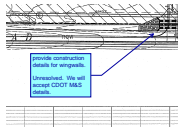
---



**Subject:** Callout  
**Page Index:** 3  
**Lock:** Unlocked  
**Author:** dsdlaforce  
**Date:** 7/11/2019 1:19:21 PM  
**Color:** ■

Figure OS-1 is missing. Resolved.

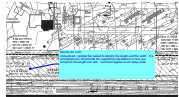
Review 6: Mark on the figure OS-1 the trash rack size. We anticipate two lines (horizontal/vertical) so the contractor can identify the size required.



**Subject:** Callout  
**Page Index:** 7  
**Lock:** Unlocked  
**Author:** dsdlaforce  
**Date:** 7/11/2019 8:27:27 AM  
**Color:** ■

provide construction details for wingwalls.

Unresolved. We will accept CDOT M&S details.



**Subject:** Callout  
**Page Index:** 2  
**Lock:** Unlocked  
**Author:** dsdlaforce  
**Date:** 7/11/2019 8:37:36 AM  
**Color:** ■

Identify the LxW.

Unresolved. Update the callout to identify the length and the width. It is anticipated you will provide the supporting calculations in how you arrived at the length and with. Comment applies to all riprap pads.