

This drawing is based on details taken from the following information provided by the customer:—
Drawings:— STEAMBOAT STRUCTURES PAGES B01-B21 DATED 7-09-2021
CONTECH PROJECT 621715 SET DATED 7-16-2021

HI LOAD LEGEND

AB = 6 1/2" ALUMINUM BEAM
ACA = A-CLAMP ASSEMBLY
AHS = ADJUSTABLE HORIZONTAL SHORE
AJH = 2x6 ADJUSTABLE JOIST HANGER
ASJ = ADJUSTABLE SCREW JACK
BBC = BRACE BY CONTRACTOR
BPF = BASE PLATE FRAME
BPS = BASE PLATE SCREW
CB = CROSSBRACE
J58 = 5"x8" J-HEAD
LBR = LATERAL BRACING BY CONTRACTOR
PS = POST SHORE
PNP = POST SHORE NAILER PLATE
RAS = 8 7/8" ALUMINUM STRINGER
RHP = RIVET AND HITCH PIN
SBC = STEEL BEAM CLAMP
SF = SHORE FRAME
TNP = TIMBER BRACE NAILER PLATE
U48 = 4" X 8" DUO U-HEAD
U88 = 8" X 9" U-HEAD ADAPTER
UNO = UNLESS NOTED OTHERWISE
UTW = U-HEAD TWO WAY
UC = UNIVERSAL CONNECTOR
V/F = VERSIFORM
W = W8X10 STEEL BEAM
** = VERIFY DIMENSION
N = SHORE TOWER (PLAN VIEW)

B	WORKING ISSUE	MJL		11/04/2021
A	PRELIMINARY ISSUE	MJL		10/29/2021
Rev	Amendments	By	Auth	Date

Amendments

Conditions

- This drawing has been prepared at the request of and for the exclusive use of and from information supplied by the customer. It is the customer's responsibility to ensure that the design, dimensions, heights, spans and applied loads shown on this drawing are in accordance with the site requirements.
- Until such time as RMD Kwikform enter into a contract with the customer for the hire and/or sale of the equipment depicted on this drawing the supply of this drawing by RMD Kwikform shall be subject to the following terms:—
 - Any use of this drawing by the customer shall constitute the customer's acceptance of these terms.
 - Where any drawing is issued bearing the words "NOT CHECKED FOR ERECTION" RMD Kwikform shall not be liable to the customer for any loss of whatever nature (whether or not such loss or damage was foreseen, direct, foreseeable, known or otherwise), including loss of anticipated profits, loss of actual profits (direct or indirect), loss of anticipated savings, loss of business, loss of goodwill or for any indirect, special or consequential loss or damage, howsoever caused ("losses") or any Losses arising as a result of any third party bringing a claim in respect of any nature whatsoever arising out of the use of such drawing by the customer.
 - These terms set out the entire liability of RMD Kwikform (including any liability for the acts or omissions of its sub-Contractors and any member of its group) in respect of the provision of this drawing and any representation, statement or tortious act or omission including negligence arising under or in connection with the supply of this drawing.
 - Notwithstanding terms 2b and 2c, RMD Kwikform's maximum aggregate liability arising out of or in connection with the supply of this drawing whether for negligence or breach of contract or any case whatsoever shall be limited to \$1000. The customer agrees and warrants that the customer shall insure against or itself bear any losses for which RMD Kwikform has excluded or limited its liability by virtue of these terms and that RMD Kwikform shall have no further liability to the Customer.
- No alterations shall be made to the design without the approval of the RMD Kwikform Design Office.
- It is the customer's responsibility to ensure that:—
 - this design complies with the Project Documentation.
 - the RMD Kwikform equipment and other load bearing items are adequately supported and braced during all stages of use on site.
 - working platforms or means of access necessary for a safe work area are provided whether shown on this drawing or not.
 - the concrete pressure is not exceeded should any of the parameters change.
- Responsibility for and Inspection and Certification of the erected equipment shall be that of the Erectors.
- The arrangement of RMD Kwikform equipment shown on this drawing applies only to this specific application.
- Read this drawing in conjunction with the quotation and the RMD Kwikform Standard Conditions of Equipment Sale Or Hire.
- This drawing and the information it contains is the property of RMD Kwikform and shall not be copied or misused.

RMD Kwikform North America



9351 Grant Street
Suite 200
Thornton
CO 80229
USA

Tel: (303) 252 7000
Fax: (303) 252 7319
Web: www.rmdkwikform.com



Status
Working Drawing
Checked for erection
of RMDK equipment

Scale ArchD:
As Shown

Drawn by MJL
Date 10/2021

Reviewed by ----
Date ----

Drawing Description

STRUCTURES INC

FOREST LAKES BRIDGES / MONUMENT, CO

TEMPORARY SUPPORT

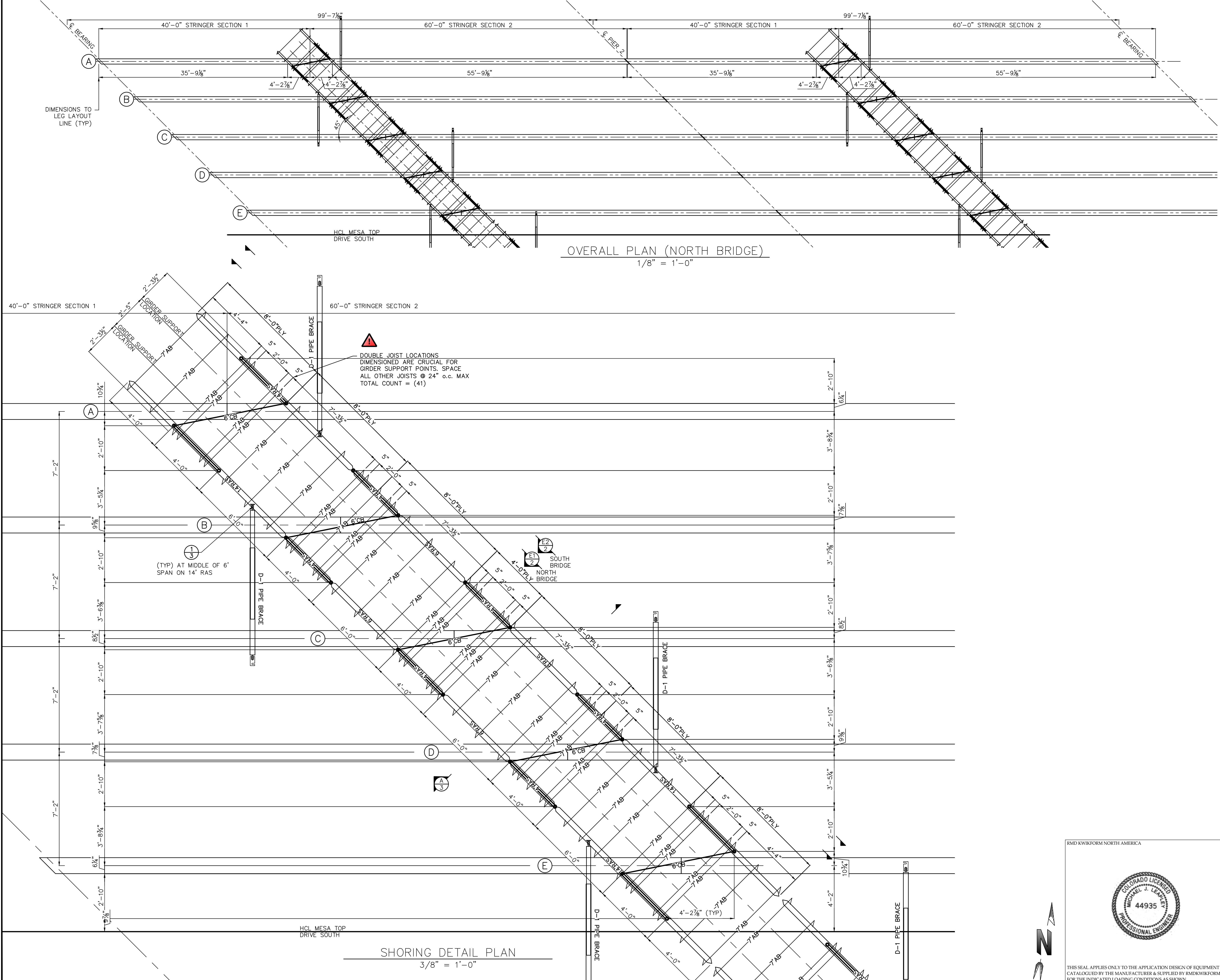
HILOAD SHORING

Drawing Number

PNA011011-04/ 1

Revision

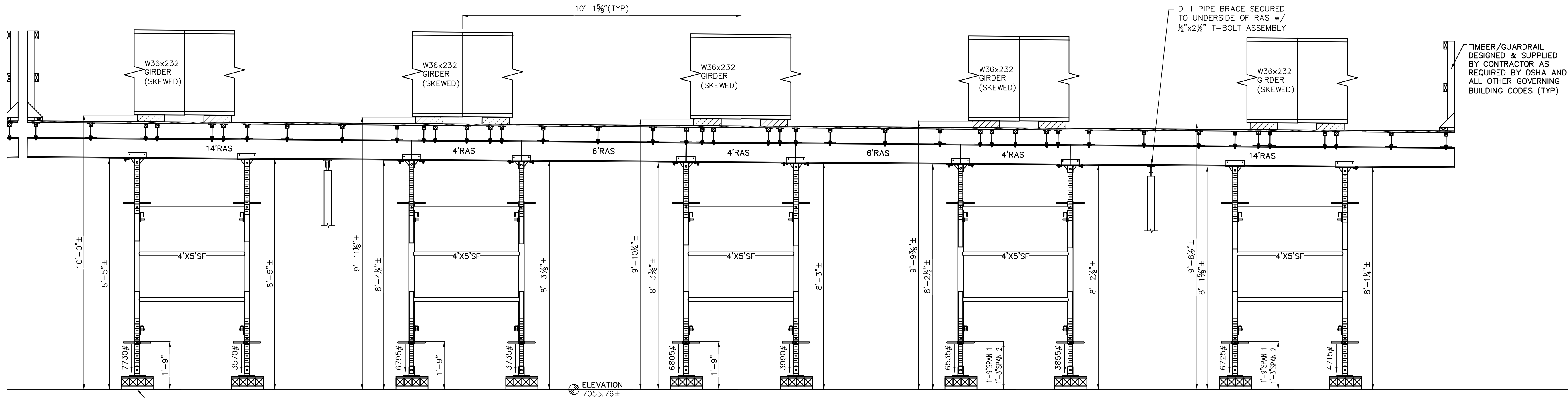
B



RMD KWIKFORM NORTH AMERICA



THIS SEAL APPLIES ONLY TO THE APPLICATION DESIGN OF EQUIPMENT AS CATALOGUED BY THE MANUFACTURER & SUPPLIED BY RMDKWIKFORM FOR THE INDICATED LOADING CONDITIONS AS SHOWN.



ELEVATION E1 (NORTH BRIDGE)

1/2" = 1'-0"

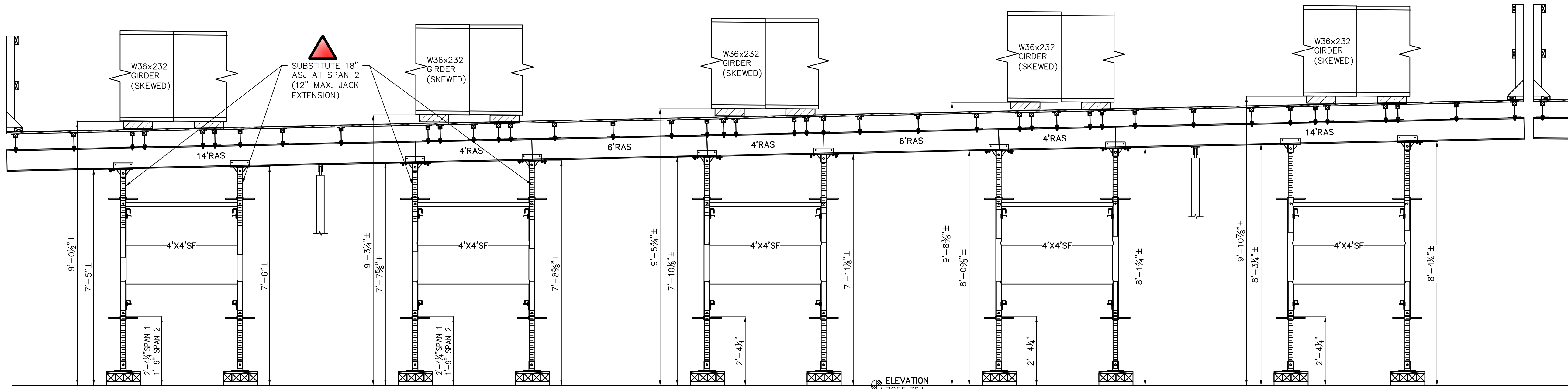
[AT CENTERLINE OF TOWER AND SPLICE LOCATION]

SPAN 1 SHOWN. SUBTRACT 11 1/8" FROM ALL HEIGHTS FOR SPAN 2

NOTE: APPROXIMATE CLEAR HEIGHTS AT SPLICE LOCATIONS SHOWN ACCOUNT FOR 6"± GIRDER CAMBER RESULTING IN 1 3/8"± ELEVATION GAIN VS. HIGH SIDE OF 40FT GIRDER END. APPROXIMATE SHORING HEIGHTS SHOWN ALLOW FOR 3 1/4" BEARING SHIMS AT 40FT GIRDER AND 3" BEARING SHIMS AT 60FT GIRDER

SILL DESIGNED AND SUPPLIED BY CONTRACTOR TO PROVIDE ADEQUATE SHORE FRAME STABILITY ON GIVEN SITE SOIL SURFACE (TYP)

MAX. LOADS SHOWN OCCUR AT LEGS UNDER 60FT GIRDER SEGMENT. TO ACCOMMODATE MAX. AND MIN JACK EXTENSIONS, SILL HEIGHT TO BE 4 1/4" MIN AND 8 1/2" MAX. CONTACT RMD FOR ADJUSTMENTS IF SILL DIMENSIONS MUST BE OUT OF THIS RANGE



ELEVATION E2 (SOUTH BRIDGE)

1/2" = 1'-0"

[AT CENTERLINE OF TOWER AND SPLICE LOCATION]

SPAN 1 SHOWN. SUBTRACT 11 1/8" FROM ALL HEIGHTS FOR SPAN 2

NOTE: APPROXIMATE CLEAR HEIGHTS AT SPLICE LOCATIONS SHOWN ACCOUNT FOR 6"± GIRDER CAMBER RESULTING IN 1 3/8"± ELEVATION GAIN VS. HIGH SIDE OF 40FT GIRDER END. APPROXIMATE SHORING HEIGHTS SHOWN ALLOW FOR 3 1/4" BEARING SHIMS AT 40FT GIRDER AND 3" BEARING SHIMS AT 60FT GIRDER

This drawing is based on details taken from the following information provided by the customer: -
Drawings: - STEAMBOAT STRUCTURES PAGES B01-B21 DATED 7-09-2021
CONTECH PROJECT 621715 SET DATED 7-16-2021

HI LOAD LEGEND

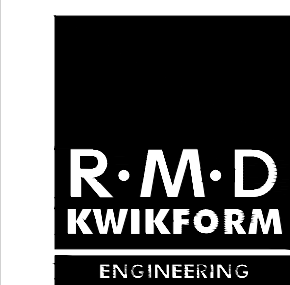
AB = 6 1/2" ALUMINUM BEAM
ACA = A-CLAMP ASSEMBLY
AHS = ADJUSTABLE HORIZONTAL SHORE
AJH = 2x6 ADJUSTABLE JOIST HANGER
ASJ = ADJUSTABLE SCREW JACK
BBC = BRACE BY CONTRACTOR
BPF = BASE PLATE FRAME
BPS = BASE PLATE SCREW
CB = CROSSBRACE
J58 = 5"x8" J-HEAD
LBR = LATERAL BRACING BY CONTRACTOR
PS = POST SHORE
PNP = POST SHORE NAILER PLATE
RAS = 8 7/8" ALUMINUM STRINGER
RHP = RIVET AND HITCH PIN
SBC = STEEL BEAM CLAMP
SF = SHORE FRAME
TNP = TIMBER BRACE NAILER PLATE
U48 = 4" X 8" DUO U-HEAD
U88 = 8" X 9" U-HEAD ADAPTER
UNO = UNLESS NOTED OTHERWISE
UTW = U-HEAD TWO WAY
UC = UNIVERSAL CONNECTOR
V/F = VERSIFORM
W = W8X10 STEEL BEAM
** = VERIFY DIMENSION
N = SHORE TOWER (PLAN VIEW)

Rev	Working Issue	MJL	11/04/2021
Rev	Preliminary Issue	MJL	10/29/2021

Amendments

Conditions

- This drawing has been prepared at the request of and for the exclusive use of and from information supplied by the customer. It is the customer's responsibility to ensure that the design, dimensions, heights, spans and applied loads shown on this drawing are in accordance with the site requirements.
- Until such time as RMD Kwikform enter into a contract with the customer for the hire and/or sale of the equipment depicted on this drawing the supply of this drawing by RMD Kwikform shall be subject to the following terms:-
 - Any use of this drawing by the customer shall constitute the customer's acceptance of these terms.
 - Where any drawing is issued bearing the words "NOT CHECKED FOR ERECTION" RMD Kwikform shall not be liable to the customer for any loss of whatever nature (whether or not such loss or damage was foreseen, direct, foreseeable, known or otherwise), including loss of anticipated profits, loss of actual profits (direct or indirect), loss of anticipated savings, loss of business, loss of goodwill or for any indirect, special or consequential loss or damage, howsoever caused ("losses") or any losses arising as a result of any third party bringing a claim in respect of any nature whatsoever arising out of the use of such drawing by the customer.
 - These terms set out the entire liability of RMD Kwikform (including any liability for the acts or omissions of its sub-contractors and any member of its group) in respect of the provision of this drawing and any representation, statement or tortious act or omission including negligence arising under or in connection with the supply of this drawing.
 - Notwithstanding terms 2b and 2c, RMD Kwikform's maximum aggregate liability arising out of or in connection with the supply of this drawing whether for negligence or breach of contract or any case whatsoever shall be limited to \$1000. The customer agrees and warrants that the customer shall insure against or itself bear any losses for which RMD Kwikform has excluded or limited its liability by virtue of these terms and that RMD Kwikform shall have no further liability to the customer.
- No alterations shall be made to the design without the approval of the RMD Kwikform Design Office.
- It is the customer's responsibility to ensure that:-
 - this design complies with the Project Documentation.
 - the RMD Kwikform equipment and other load bearing items are adequately supported and braced during all stages of use on site.
 - working platforms or means of access necessary for a safe work area are provided whether shown on this drawing or not.
 - the concrete pressure is not exceeded should any of the parameters change.
- Responsibility for and inspection and Certification of the erected equipment shall be that of the Erectors.
- The arrangement of RMD Kwikform equipment shown on this drawing applies only to this specific application.
- Read this drawing in conjunction with the quotation and the RMD Kwikform Standard Conditions of Equipment Sales or Hire.
- This drawing and the information it contains is the property of RMD Kwikform and shall not be copied or misused.



RMD Kwikform North America
9351 Grant Street
Suite 200
Thornton
CO 80229
USA
Tel: (303) 252 7000
Fax: (303) 252 7319
Web: www.rmdkwikform.com



Status
Working Drawing
Checked for erection
of RMDK equipment

Scale ArchD: As Shown	Drawn by MJL Date 10/2021	Reviewed by ---- Date ----
--------------------------	------------------------------	-------------------------------

Drawing Description

STRUCTURES INC

FOREST LAKES BRIDGES / MONUMENT, CO

TEMPORARY SUPPORT

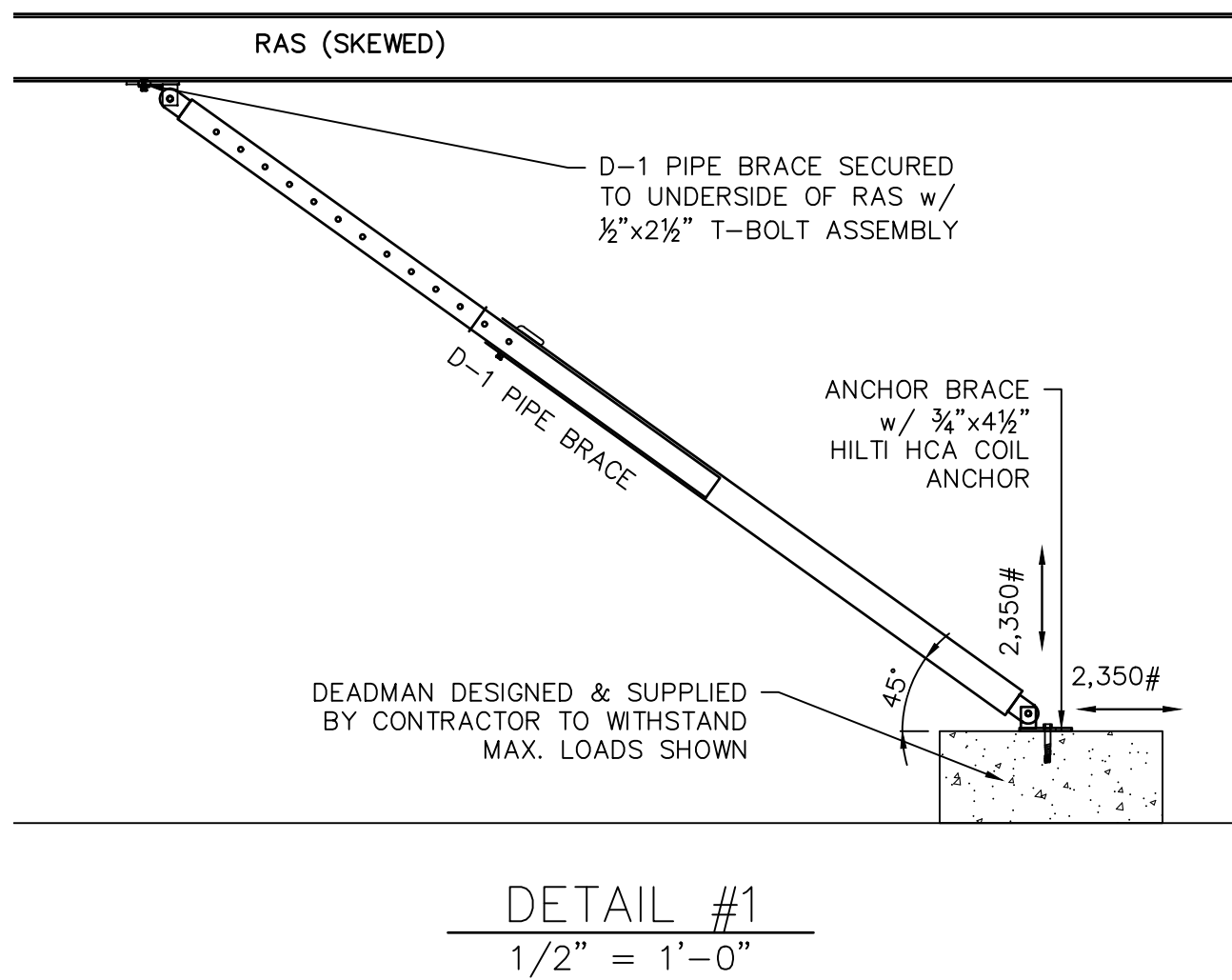
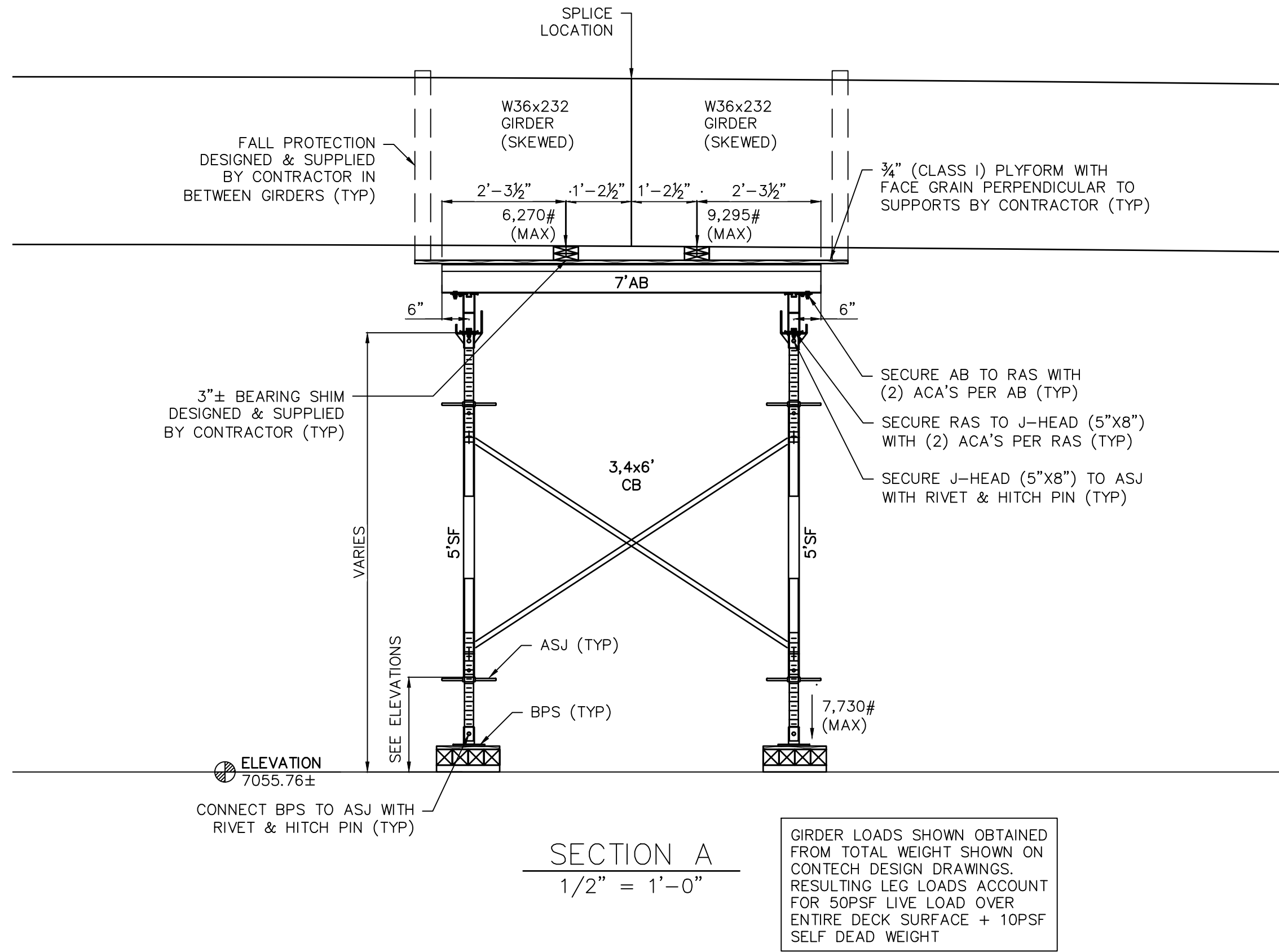
HILOAD SHORING

Drawing Number	Revision
PNA011011-04/ 2	B

RMD KWIKFORM NORTH AMERICA



THIS SEAL APPLIES ONLY TO THE APPLICATION DESIGN OF EQUIPMENT AS CATALOGUED BY THE MANUFACTURER & SUPPLIED BY RMDKWIKFORM FOR THE INDICATED LOADING CONDITIONS AS SHOWN.



This drawing is based on details taken from the following information provided by the customer: -
Drawings: - STEAMBOAT STRUCTURES PAGES B01-B21 DATED 7-09-2021
CONTECH PROJECT 621715 SET DATED 7-16-2021

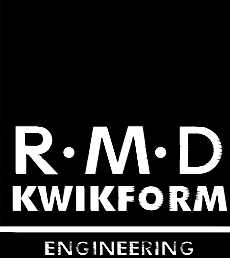
HI LOAD LEGEND

AB = 6 1/2" ALUMINUM BEAM
ACA = A-CLAMP ASSEMBLY
AHS = ADJUSTABLE HORIZONTAL SHORE
AJH = 2x6 ADJUSTABLE JOIST HANGER
ASJ = ADJUSTABLE SCREW JACK
BBC = BRACE BY CONTRACTOR
BPF = BASE PLATE FRAME
BPS = BASE PLATE SCREW
CB = CROSSBRACE
J58 = 5"x8" J-HEAD
LBR = LATERAL BRACING BY CONTRACTOR
PS = POST SHORE
PNP = POST SHORE NAILER PLATE
RAS = 8 7/8" ALUMINUM STRINGER
RHP = RIVET AND HITCH PIN
SBC = STEEL BEAM CLAMP
SF = SHORE FRAME
TNP = TIMBER BRACE NAILER PLATE
U48 = 4" X 8" DUO U-HEAD
U88 = 8" X 9" U-HEAD ADAPTER
UNO = UNLESS NOTED OTHERWISE
UTW = U-HEAD TWO WAY
UC = UNIVERSAL CONNECTOR
V/F = VERSIFORM
W = W8X10 STEEL BEAM
** = VERIFY DIMENSION
N = SHORE TOWER (PLAN VIEW)

Rev	Amendments	By	Auth	Date
B	WORKING ISSUE	MJL		11/04/2021
A	PRELIMINARY ISSUE	MJL		10/29/2021

Conditions

- This drawing has been prepared at the request of and for the exclusive use of and from information supplied by the customer. It is the customer's responsibility to ensure that the design, dimensions, heights, spans and applied loads shown on this drawing are in accordance with the site requirements.
- Until such time as RMD Kwikform enter into a contract with the customer for the hire and/or sale of the equipment depicted on this drawing the supply of this drawing by RMD Kwikform shall be subject to the following terms:-
 - Any use of this drawing by the customer shall constitute the customer's acceptance of these terms.
 - Where any drawing is issued bearing the words "NOT CHECKED FOR ERECTION" RMD Kwikform shall not be liable to the customer for any loss of whatever nature (whether or not such loss or damage was foreseen, direct, foreseeable, known or otherwise), including loss of anticipated profits, loss of actual profits (direct or indirect), loss of anticipated savings, loss of business, loss of goodwill or for any indirect, special or consequential loss or damage, howsoever caused ("Losses") or any Losses arising as a result of any third party bringing a claim in respect of any nature whatsoever arising out of the use of such drawing by the customer.
 - These terms set out the entire liability of RMD Kwikform (including any liability for the acts or omissions of its sub-Contractors and any member of its group) in respect of the provision of this drawing and any representation, statement or tortious act or omission including negligence arising under or in connection with the supply of this drawing.
 - Notwithstanding terms 2b and 2c, RMD Kwikform's maximum aggregate liability arising out of or in connection with the supply of this drawing whether for negligence or breach of contract or any case whatsoever shall be limited to \$1000. The customer agrees and warrants that the customer shall insure against or itself bear any losses for which RMD Kwikform has excluded or limited its liability by virtue of these terms and that RMD Kwikform shall have no further liability to the Customer.
- No alterations shall be made to the design without the approval of the RMD Kwikform Design Office.
- It is the customer's responsibility to ensure that:-
 - this design complies with the Project Documentation.
 - the RMD Kwikform equipment and other load bearing items are adequately supported and braced during all stages of use on site.
 - working platforms or means of access necessary for a safe work area are provided whether shown on this drawing or not.
 - the concrete pressure is not exceeded should any of the parameters change.
- Responsibility for and Inspection and Certification of the erected equipment shall be that of the Erectors.
- The arrangement of RMD Kwikform equipment shown on this drawing applies only to this specific application.
- Read this drawing in conjunction with the quotation and the RMD Kwikform Standard Conditions of Equipment Sale Or Hire.
- This drawing and the information it contains is the property of RMD Kwikform and shall not be copied or misused.



RMD Kwikform North America
9351 Grant Street
Suite 200
Thornton
CO 80229
USA
Tel: (303) 252 7000
Fax: (303) 252 7319
Web: www.rmdkwikform.com



Status
Working Drawing
Checked for erection
of RMDK equipment

Scale ArchD: As Shown	Drawn by MJL Date 10/2021	Reviewed by ---- Date ----
--------------------------	------------------------------	-------------------------------

Drawing Description

STRUCTURES INC
FOREST LAKES BRIDGES / MONUMENT, CO
TEMPORARY SUPPORT
HILOAD SHORING

Drawing Number PNA011011-04/ 3	Revision B
--	----------------------

RMD KWIKFORM NORTH AMERICA



THIS SEAL APPLIES ONLY TO THE APPLICATION DESIGN OF EQUIPMENT AS CATALOGUED BY THE MANUFACTURER & SUPPLIED BY RMDKWIKFORM FOR THE INDICATED LOADING CONDITIONS AS SHOWN.