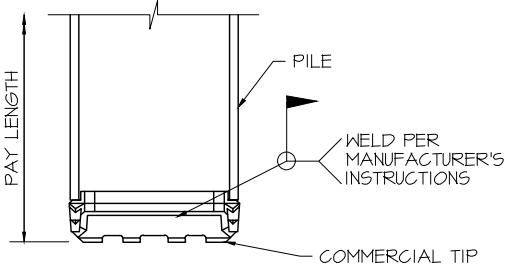


PILE NOTES:

- 1. PILES ARE ORIENTED SUCH THAT THE STRONG AXIS IS PARALLEL TO THE CENTERLINE OF THE ABUTMENT OR WINGWALL AS SHOWN.
- 2. PILE FIELD SPLICES, IF REQUIRED, SHALL BE MADE WITH COMPLETE JOINT PENETRATION (CJP) WELDS IN ACCORDANCE WITH CDOT STANDARD PROVISION OF SECTION 502 - EXTENSIONS AND SPLICES.
- 3. ONLY COMPLETE JOINT PENETRATION (CJP) WELDS SHALL BE USED FOR PILE SPLICES.
- 4. PILE TIP TO BE INCLUDED IN THE COST OF THE PILE.
- 5. ALL PILES ARE END BEARING AND SHALL BE DRIVEN VERTICAL.
- 6. REFER TO THE GEOTECHNICAL REPORT FOR REQUIRED PILE TESTS TO BE PERFORMED.
- 7. ALL STEEL PILES SHALL BE AASHTO M270 GRADE 50 AND PROTECTED WITH AN APPROVED COMMERCIAL PILE TIP.
- 8. ELEVATIONS SHOWN SHALL BE VERIFIED AT TIME OF CONSTRUCTION BY THE GEOTECHNICAL ENGINEER.
- 9. AXIAL GEOTECHNICAL RESISTANCE FACTOR = 0.85.



REINFORCING TIP LAYOUT

FOUNDATION LAYOUT

PILE SUMMARY								
	PILE SIZE	MAX LOAD (FACTORED) (KIPS)	MAX LOAD (SERVICE) (KIPS)	CUTOFF ELEVATION	ESTIMATED BEDROCK ELEV	ESTIMATED TIP ELEV	MINIMUM REQ'D TIP ELEV	AS-BUILT TIP ELEV
WINGWALL 1A	HP 12x53	28	22	7055	7045	7035	7035	
WINGWALL 1B	HP 12x53	40	32	7055	7038	7028	7028	
ABUTMENT 1	HP 12x53	215	158	7054	7038-7045	7028-7035	7028-7035	
WINGWALL 3A	HP 12x53	38	30	7055	7034	7024	7024	
WINGWALL 3B	HP 12x53	29	23	7055	7038	7028	7028	
ABUTMENT 3	HP 12x53	200	150	7054	7034-7038	7024-7028	7024-7028	



REVISIONS				DATE	BY	PREPARED FOR:	DESIGNED BY:	PROJECT TITLE		PROJECT LOCATION	
1							HMR	FOREST LAKES BRIDGES		MONUMENT, CO	
2							AJM				
3							HMR				
4											
5											
6											
7											
							DATE:	1/22/21		STRUCTURE/JOB:	
										SHEET NO.	
										B08	