

C:\AUTODESK VALLT WORKING\2020\BEM1631715\CAD\FABRICATION\REV AB-1631715-030 REV-0.DWG 10/29/2021 12:24 PM

100'-0" x 30'-0"

MESA TOP DRIVE SOUTH BRIDGE

ELITE PROPERTIES of AMERICA, INC

DRAWING INDEX	
SHEET NO.	DESCRIPTION
1	TITLE PAGE
2	GENERAL NOTES & ANCHOR DETAILS
3	PLAN VIEW
4	CROSS SECTION
5	ANCHOR DETAILS
6	DETAILS
7	DETAILS
8	SPLICE DETAILS
9	DETAILS
10	DETAILS



100'-0" x 30'-0"

MESA TOP DRIVE SOUTH BRIDGE

ELITE PROPERTIES of AMERICA, INC

FOUNTAIN, CO

CONTECH

ENGINEERED SOLUTIONS LLC

www.ContechES.com

10050 Cr 68 Dr, Fountain, CO 80831

800-328-2047 320-345-9126 320-566-3148 FAX

BIG R

BRIDGE

DATE: 7/24/2020

DESIGNED: NBE

DRAWN: RDH

CHECKED: NBE

APPROVED: NBE

PROJECT No.: 621715

SEQUENCE No.: 030

SHEET: 1

OF 12

100'-0" x 30'-0"

MESA TOP DRIVE SOUTH BRIDGE

ELITE PROPERTIES of AMERICA, INC

FOUNTAIN, CO

AB-1 10/29/2021 AS-BUILT FINALS

AB 9/28/2021 AS-BUILT FINALS

EO 7/22/2021 APPROVED FOR CONSTRUCTION

MARK DATE

REVISION DESCRIPTION

BY

This design and information shown on this drawing is the property of Contech Engineered Solutions LLC and is to be used for the project and location only. It is not to be used, reproduced or modified in any manner without the written consent of Contech Engineered Solutions LLC. Contech Engineered Solutions LLC expressly disclaims any liability or responsibility for any errors or omissions on this drawing.

If discrepancies between the supplied information upon which the drawing is based and actual field conditions are discovered, the user must immediately report these discrepancies to Contech Engineered Solutions LLC for re-evaluation of the design. Contech Engineered Solutions LLC will not be responsible for any errors or omissions on this drawing or for any consequences or damages resulting from the use of this drawing.

GENERAL NOTES:

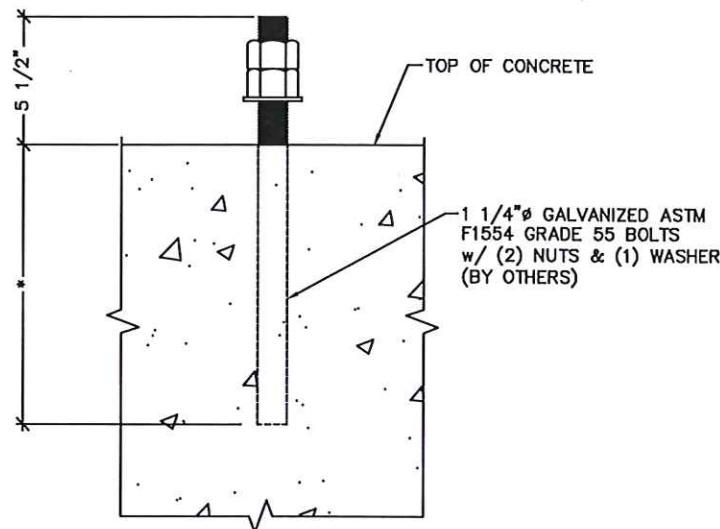
- CONTECH ENGINEERED SOLUTIONS HAS AISC QUALITY CERTIFIED BRIDGE FABRICATION - ADVANCED (MAJOR) WITH A FRACTURE CRITICAL AND SOPHISTICATED PAINT ENDORSEMENT AND CWB CERTIFIED TO CSA STANDARD W47.1 DIVISION 2.
- DESIGN IS IN ACCORDANCE WITH THE AASHTO LRFD BRIDGE DESIGN SPECIFICATIONS, 8th EDITION 2017.
- MATERIALS (UNLESS NOTED OTHERWISE):
 - STRUCTURAL STEEL: ASTM A588 WEATHERING STEEL
 - ELASTOMERIC PADS: GRADE 4, 60 DUROMETER
 - SHEET PILING: ASTM A929 (GALV)
STRUCTURAL BOLTS: ASTM F3125 GRADE A325 (TYPE 1)
 - GUARDRAIL BOLTS: ASTM A307 (GALV)
- DESIGN LOADINGS:
 - BRIDGE DEAD LOAD PLUS 37.5 FUTURE WEARING SURFACE.
 - VEHICLE LIVE LOAD: HL-93, MAX ADTT = 160
 - WIND LOADING PER AASHTO LRFD BRIDGE DESIGN SPECIFICATIONS SECTION 3.8:
WIND SPEED = 115 MPH
WIND EXPOSURE CATEGORY = C
MAX HEIGHT OF STRUCTURE = 33 FT.
 - BRIDGE RAIL DESIGNED FOR TL-1 LOADING IN ACCORDANCE WITH AASHTO LRFD BRIDGE DESIGN SPECIFICATIONS APPENDIX A13.2 (RAIL HAS NOT BEEN CRASH TESTED)
 - SEISMIC LOADING PER AASHTO LRFD BRIDGE DESIGN SPECIFICATIONS SECTION 3.10:
SITE CLASS: D
PGA = 0.058
S_s = 0.125
S_i = 0.035
PERIOD OF BRIDGE = T_m = 0.076 SEC
- BRIDGE TO BE BUILT TO THE REQUIREMENTS OF AWS D1.5.
- ALL SHOP WELDING SHALL USE THE GAS METAL ARC WELDING OR FLUX CORED ARC WELDING PROCESS.
- FINISH:
ALL EXPOSED SURFACES OF STEEL TO BE CLEANED IN ACCORDANCE WITH STEEL STRUCTURES PAINTING COUNCIL SURFACE PREPARATION SPECIFICATIONS NO. 1, SSPC-SP1 SOLVENT CLEANING. EXPOSED SURFACES OF STEEL SHALL BE DEFINED AS THOSE SURFACES SEEN FROM THE DECK OR FROM THE OUTSIDE (AND BOTTOM) OF THE STRUCTURE. ALL OTHER SURFACES TO HAVE STANDARD MILL FINISH.
- ALL BOLTED CONNECTIONS ARE CONSIDERED TO BE PRETENSIONED OR SLIP-CRITICAL CONNECTIONS. ALL BOLTS ARE TO BE PRETENSIONED PER THE REQUIREMENTS OF SECTION 8.2 OF THE SPECIFICATION FOR STRUCTURAL JOINTS USING HIGH-STRENGTH BOLTS BY RCSC.
- ALL BOLTS, NUTS AND WASHERS SHALL BE FURNISHED IN THE AMOUNT OF 5% IN EXCESS OF THE NUMBER REQUIRED FOR EACH SIZE AND LENGTH.
- IF BOLTS DO NOT SMOOTHLY ENGAGE UP TO SNUG-TIGHT, THERE MAY BE AN OBSTRUCTION WITHIN THE THREADS. THE BOLTS SHOULD BE REMOVED, THE THREADS ON THE BOLT AND NUT CLEANED AND RETAPPED IF NECESSARY TO ALLOW SMOOTH INSTALLATION OF THE BOLT. (IF APPLICABLE)
- MAINTENANCE NOTE: CONTECH RECOMMENDS NOT APPLYING DE-ICING OR DUST PROHIBITIVE CHEMICALS OR SALTS TO ANY PART OF THE BRIDGE STRUCTURE. IF DE-ICING OR DUST PROHIBITIVE CHEMICALS OR SALTS ARE APPLIED TO ANY PART OF THE BRIDGE STRUCTURE, CONTECH WILL NOT BE RESPONSIBLE FOR ANY RESULTANT ACCELERATED CORROSION.

CONCRETE NOTES

- BIG R BRIDGE IS RESPONSIBLE FOR THE STRUCTURAL DESIGN OF THE CONCRETE DECK. ALL ISSUES RELATED TO MATERIAL SUPPLY, TESTING AND INSTALLATION ARE OUTSIDE OF BIG R BRIDGE'S RESPONSIBILITY.
- CONCRETE MIX DESIGN, MATERIALS, MIXING, PLACEMENT, FINISHING AND TESTING SHALL BE IN ACCORDANCE WITH THE REQUIREMENTS OF SECTION 601 OF CDOT STANDARD SPECIFICATIONS FOR ROAD AND BRIDGE CONSTRUCTION, 2017 EDITION.
- MINIMUM MATERIAL REQUIREMENTS:
 - CONCRETE: CLASS D OR H: f_c = 4500 psi AT 28 DAY
AIR CONTENT OF 5.5% +/- 1%
UNIT WEIGHT OF 145 PCF MAX
 - REINFORCING: ASTM A615 GRADE 60 OR ASTM A775 FOR EPOXY COATING
- THE USE OF EPOXY COATED REBAR, GALVANIZED REBAR, DECK SEALERS OR ANY OTHER FORM OF PROTECTION OF THE REBAR SHALL BE DONE AS NEEDED FOR LOCAL CONDITIONS OR AS REQUIRED PER THE PROJECT CONTRACT DOCUMENTS AND IS NOT THE RESPONSIBILITY OF BIG R BRIDGE.
- THE CONTRACTOR MUST EXERCISE CARE TO CONTROL TRAFFIC AND STORAGE OF MATERIALS ON THE FORM DECK BEFORE CONCRETE IS PLACED.
- LONGITUDINAL BARS MAY BE SPliced IF REQUIRED. SPICES SHALL BE STAGGERED EVERY OTHER LONGITUDINAL BAR. SPICES SHALL BE LOCATED AT OR NEAR THE ONE-THIRD POINT OF THE BAY SPANS FROM FLOOR BEAM TO FLOOR BEAM. REQUIRED SPICE LENGTHS ARE AS FOLLOWS:

BAR SIZE	NORMAL WEIGHT CONCRETE (145 PCF)	LIGHT WEIGHT CONCRETE (120 PCF)
#4	29"	35"
#5	36"	43"
#6	43"	52"
#7	50"	60"
#8	57"	69"
#9	70"	85"

- STAY IN PLACE GALVANIZED FORM DECK SHALL BE USED ON THE BRIDGE. FORM DECK SHALL BE SHOP ATTACHED TO FLOOR BEAMS VIA SELF-DRILLING FASTENERS, WELDING OR POWER ACTUATED FASTENERS. LONGITUDINAL SHEET LAPS SHALL BE ATTACHED WITH SELF-DRILLING FASTENERS AT 36" MAXIMUM SPACING. THE ATTACHMENT OF THE FORM DECK TO THE FLOOR BEAMS IS ONLY NECESSARY TO KEEP THE FORM DECK IN PLACE DURING TRANSPORT AND DURING THE CONCRETE PLACEMENT. THE FORM DECK IS NOT REQUIRED FOR DIAPHRAGM ACTION OR COMPOSITE ACTION AND PROVIDES NO STRUCTURAL BENEFIT TO THE TRUSS OR THE DECK AFTER THE CONCRETE IS SET.
- CONCRETE TO BE FINISHED WITH A TRANSVERSE BROOM FINISH.
- THE USE OF GROOVED CONTRACTION JOINTS SHALL BE PUT IN PER THE PROJECT CONTRACT DOCUMENTS OR AT THE DISCRETION OF THE ENGINEER AND OWNER. IF CONTRACTION JOINTS ARE USED, THEY SHALL BE PLACED OVER THE CENTERLINE OF THE FLOOR BEAMS AS NEEDED.



ANCHOR BOLT DETAIL

***NOTE:**
ANCHOR BOLTS ARE DESIGNED BY CONTECH FOR STEEL STRENGTH IN SHEAR AND TENSION OF THE ANCHOR BOLT ONLY. ALL DESIGN CONSIDERATIONS REGARDING CONCRETE BREAKOUT STRENGTH IN SHEAR AND TENSION, PULLOUT STRENGTH, CONCRETE SIDE-FACE BLOWOUT STRENGTH, CONCRETE PRYOUT STRENGTH, EMBEDMENT DEPTH, TYPE OF ANCHORAGE OR ANY OTHER CONCRETE FAILURE MODES ARE NOT CONSIDERED AND ARE NOT THE RESPONSIBILITY OF CONTECH. IF LARGER DIAMETER BOLTS ARE REQUIRED TO MEET ANY OF THESE REQUIREMENTS, THAT INFORMATION MUST BE PROVIDED TO CONTECH PRIOR TO BEGINNING ANY FABRICATION ON THE BRIDGE.

LIFTING WEIGHTS (NORTH BRIDGES 621715-30 OR 40)			
ITEM	QTY	UNIT WEIGHT (LBS)	TOTAL WEIGHT (LBS)
BRIDGE SECTION 1A	1	32,311	32,311
BRIDGE SECTION 2A	1	47,349	47,349
BRIDGE SECTION 1B	1	21,710	21,710
BRIDGE SECTION 2B	1	31,920	31,920
LOOSE ITEMS	-	-	18,000
TOTAL BRIDGE WEIGHT:			151,290

LIFTING WEIGHTS (SOUTH BRIDGES 621715-60 OR 60)			
ITEM	QTY	UNIT WEIGHT (LBS)	TOTAL WEIGHT (LBS)
BRIDGE SECTION 1A	1	21,710	21,710
BRIDGE SECTION 2A	1	31,920	31,920
BRIDGE SECTION 1B	1	32,311	32,311
BRIDGE SECTION 2B	1	47,349	47,349
LOOSE ITEMS	-	-	18,000
TOTAL BRIDGE WEIGHT:			151,290

	BEARING REACTION IN KIPS	MAX AT INTERIOR STRINGER			MAX AT EXTERIOR STRINGER			TOTAL AT ABUTMENT		
		P	H	L	P	H	L	P	H	L
HL-93	DEAD LOAD (DC)	53.78			39.77			240.89		
	WEARING SURFACE LOAD (DW)	13.44			34.42			109.14		
	VEHICLE LOAD (LL)	90.43			68.83			193.83		
	VEHICLE LOAD + DYNAMIC LOAD ALLOWANCE (LL+IM)	104.99			79.91			236.87		
	WIND LOAD (WS)	-30.00*	3.00			3.00		-30.00*	15.00	
	THERMAL LOAD (TU)						13.32			66.59
	BREAKING FORCE (BR)						7.20			36.00
	SEISMIC LOAD (EQ)		13.36	26.72		13.36	26.72	66.79	133.59	

"P": VERTICAL LOAD
"H": HORIZONTAL LOAD TRANSVERSE TO THE STRUCTURE
"L": HORIZONTAL LOAD LONGITUDINAL TO THE STRUCTURE
* WIND LOAD UPLIFT ASSUMES FULL 20 PSF TO DECK AREA IS APPLIED TO ONE STRINGER LINE

CONTECH
FABRICATION
DRAWING

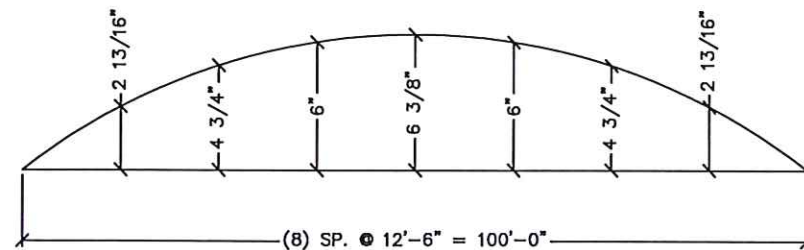
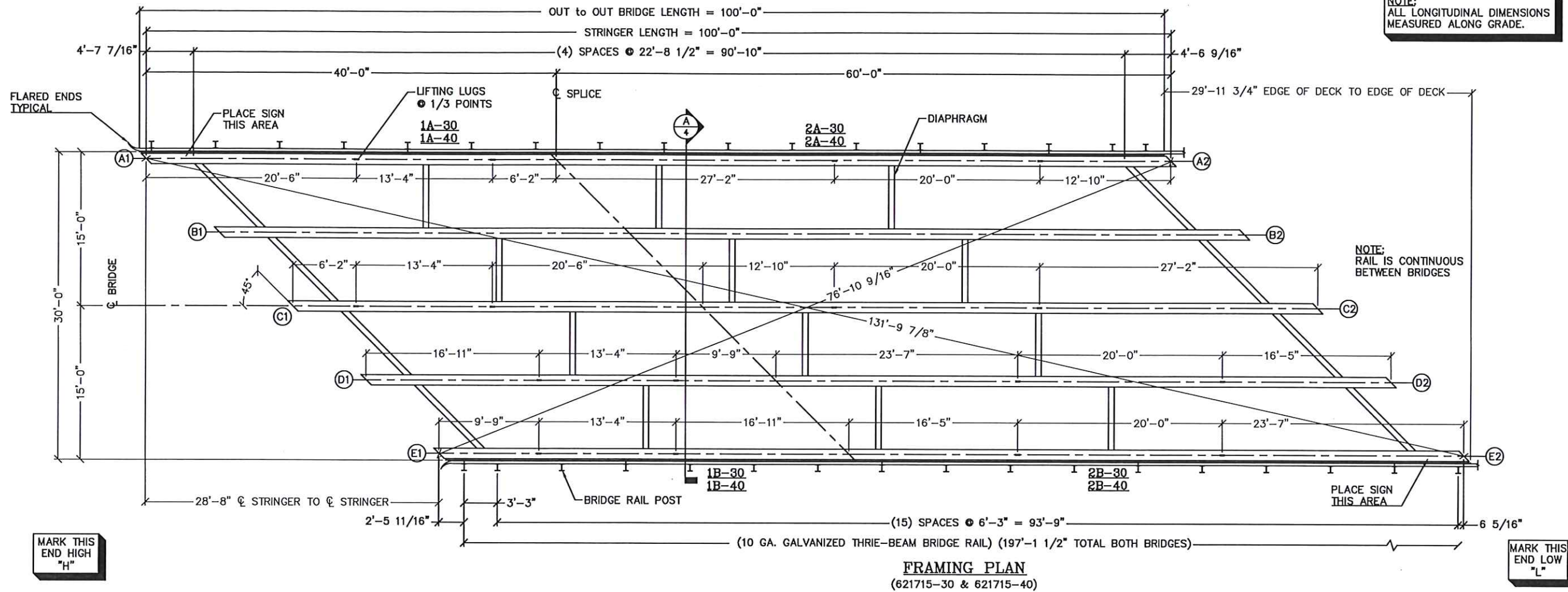


100'-0" x 30'-0"
MESA TOP DRIVE SOUTH BRIDGE
ELITE PROPERTIES OF AMERICA, INC
FOUNTAIN, CO

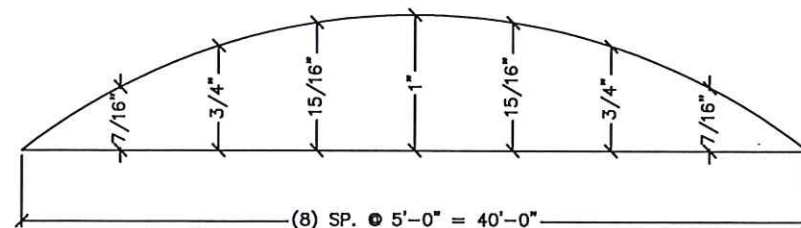


DATE: 7/24/2020	
DESIGNED: NBE	DRAWN: RDH
CHECKED: NBE	APPROVED: NBE
PROJECT No.: 621715	SEQUENCE No.: 030
SHEET: 2 OF 12	

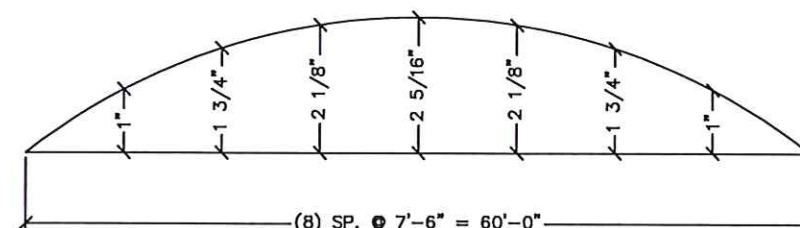
C:\AUTODESK\VAULT\WORKING\2020\BEM621715\CAD\FABRICATION\REV AB-1\621715-030 REV A.DWG 10/29/2021 12:24 PM



CAMBER DETAIL
(FULL BRIDGE)



CAMBER DETAIL
(STRINGER SECTION 1)



CAMBER DETAIL
(STRINGER SECTION 2)

MEMBERS	DESCRIPTION
GIRDER	W 36x232
DIAPHRAGM	W 21x44
POST BLOCK	W 14x22
SIDE DAM	PL 1/4"

BUILD 2 AS SHOWN
621715-30
621715-40

CONTECH
FABRICATION
DRAWING



The design and information shown on this drawing is the property of Contech Engineered Solutions, LLC and is to be used for the project and location only. It may be used, reproduced or modified in any manner without the written consent of Contech Engineered Solutions, LLC. Contech Engineered Solutions, LLC expressly disclaims any liability or responsibility for such use.			
If discrepancies between the supplied information upon which the drawing is based and actual field conditions are discovered, the user must immediately notify Contech Engineered Solutions, LLC. Contech Engineered Solutions, LLC will not be responsible for these discrepancies or for re-evaluation of the design. Contech Engineered Solutions, LLC will not be responsible for any damage or injury resulting from the use of this drawing.			
DATE:	7/24/2020	DESIGNED:	NBE
DRAWN:	RDH	CHECKED:	NBE
APPROVED:	NBE	PROJECT No.:	621715
SEQUENCE No.:	030	SHEET:	3 OF 12
REVISION DESCRIPTION	DATE	MARK	BY
AS-BUILT FINALS	10/29/2021	AB-1	TLF
AS-BUILT FINALS	9/28/2021	AB	TLF
APPROVED FOR CONSTRUCTION	7/22/2021	EO	TLF

100'-0" x 30'-0"

MESA TOP DRIVE SOUTH BRIDGE

ELITE PROPERTIES OF AMERICA, INC

FOUNTAIN, CO

CONTECH
ENGINEERED SOLUTIONS LLC
www.conteches.com
10502 Cr 68, Greeley, CO 80631
800-328-3047 320-345-5120 320-345-5148 FAX

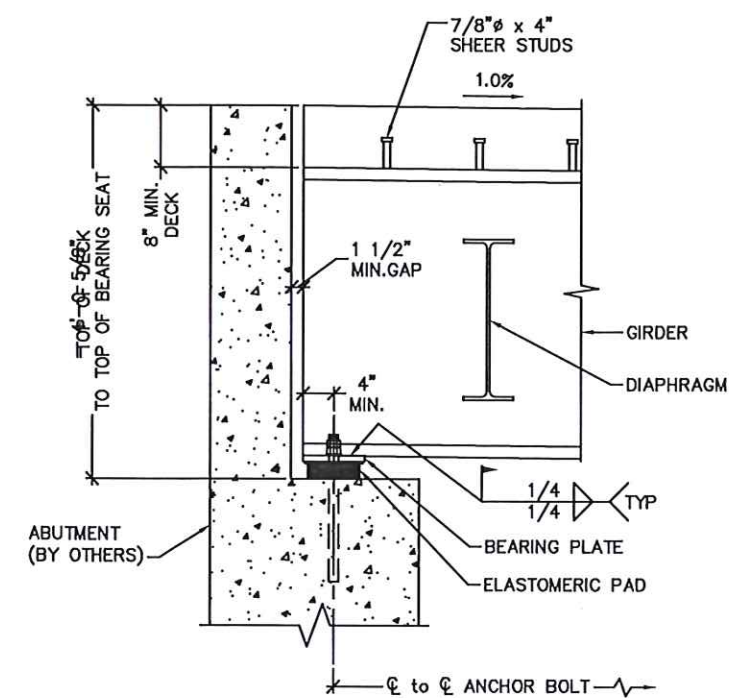
BIG R
BRIDGE

CONTECH
FABRICATION
DRAWING

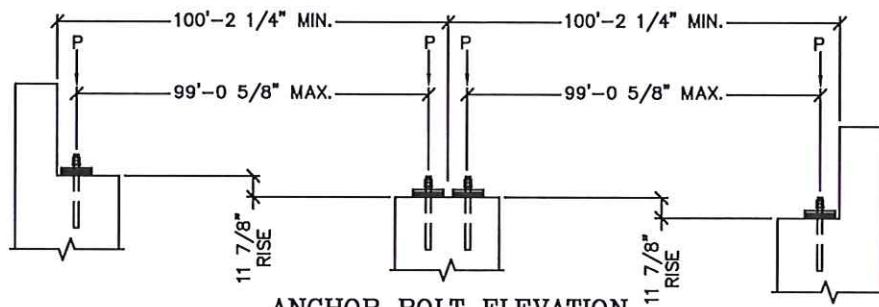


7-19-22

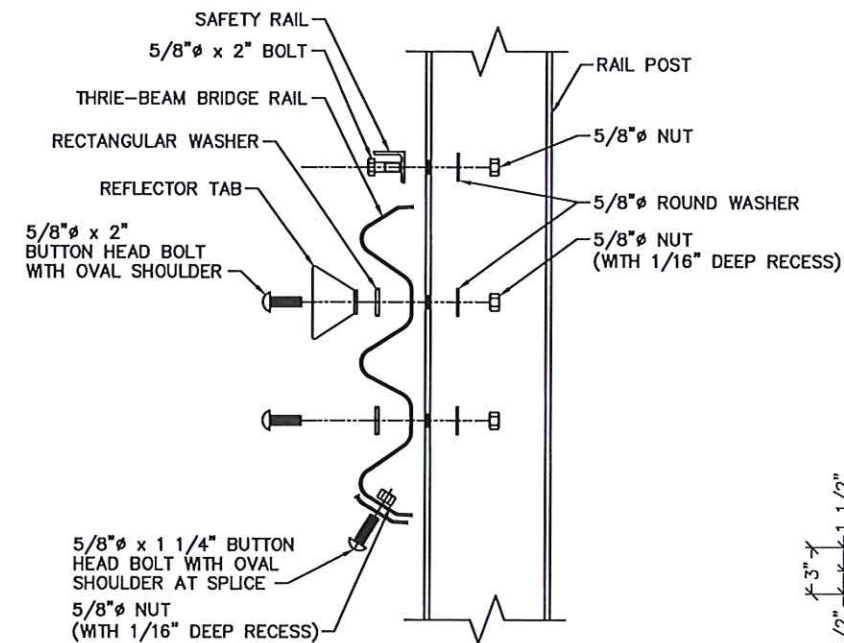
MESA TOP DRIVE SOUTH BRIDGE
ELITE PROPERTIES OF AMERICA, INC
FOUNTAIN, CO



BEARING DETAIL

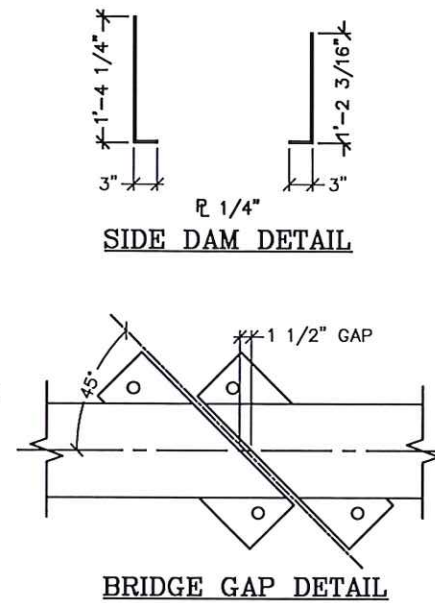


ANCHOR BOLT ELEVATION

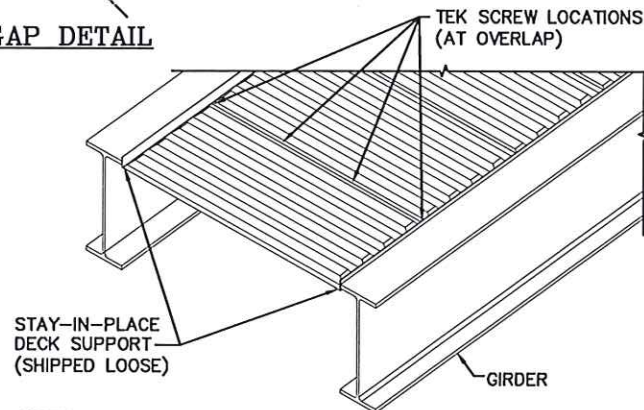
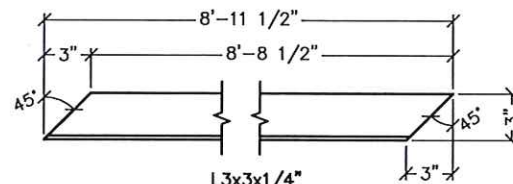
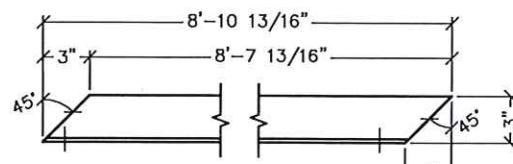
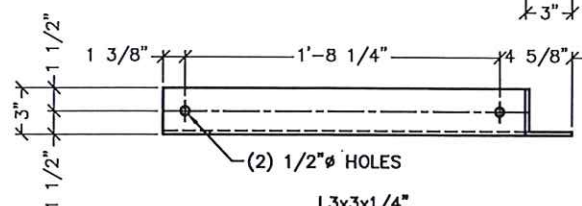
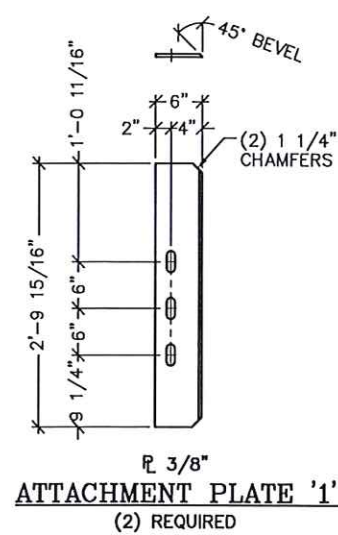
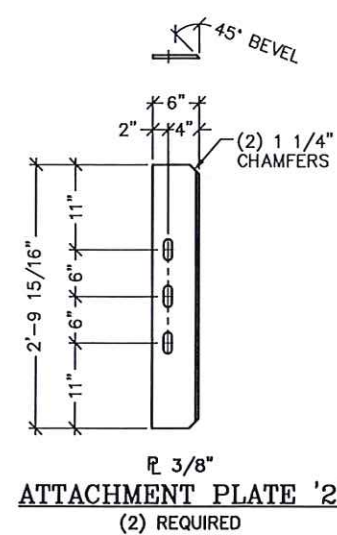
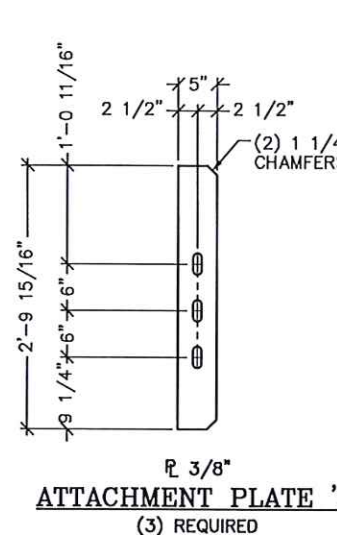
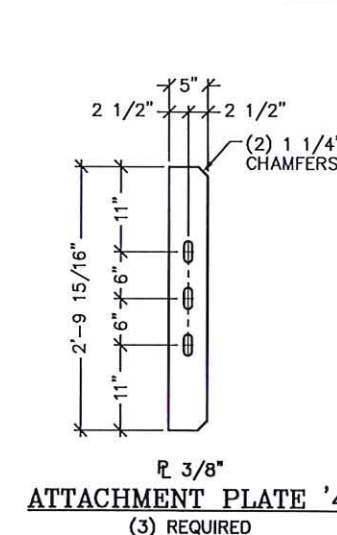
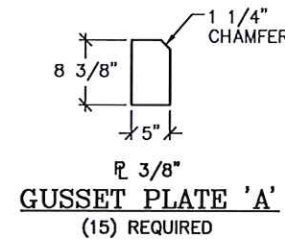
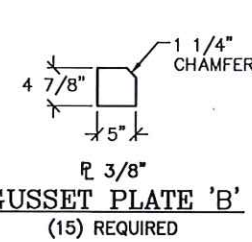
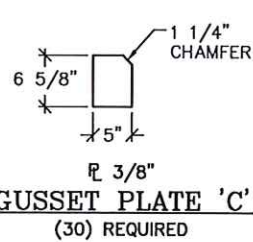
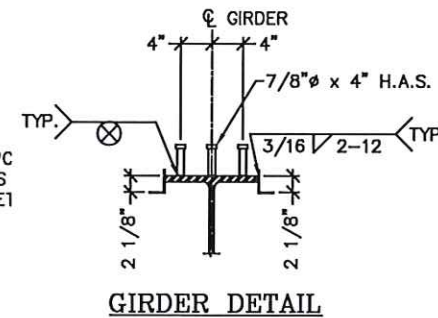


THREE-BEAM RAIL ATTACHMENT DETAIL

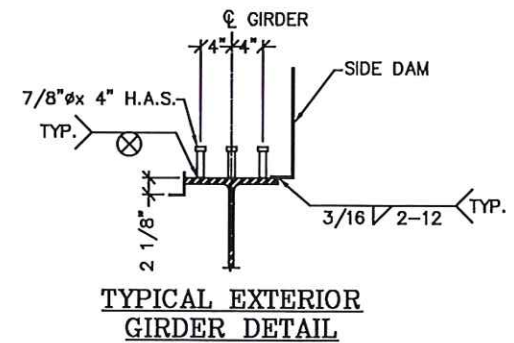
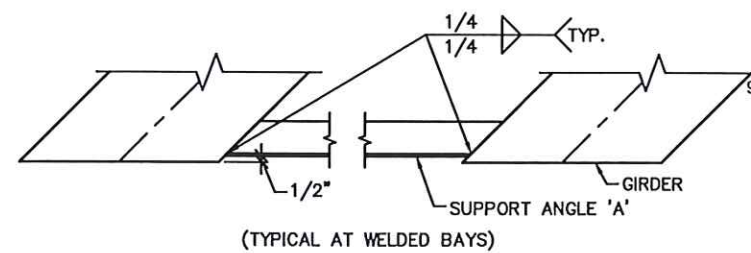
(W 8x18 POSTS)



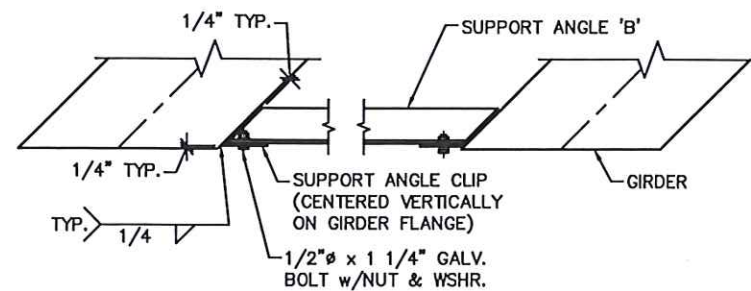
BRIDGE GAP DETAIL

TYPICAL STAY-IN-PLACE
DECK MOUNTING DETAILSUPPORT ANGLE 'A'
(6) REQUIREDSUPPORT ANGLE 'B'
(2) REQUIREDSUPPORT ANGLE CLIP
(2) REQUIREDATTACHMENT PLATE '1'
(2) REQUIREDATTACHMENT PLATE '2'
(2) REQUIREDATTACHMENT PLATE '3'
(3) REQUIREDATTACHMENT PLATE '4'
(3) REQUIREDGUSSET PLATE 'A'
(15) REQUIREDGUSSET PLATE 'B'
(15) REQUIREDGUSSET PLATE 'C'
(30) REQUIRED

GIRDER DETAIL

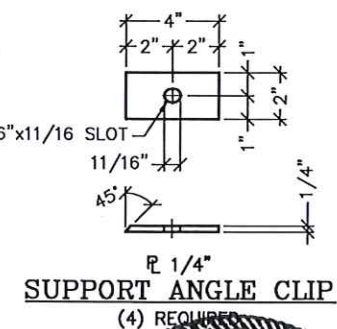
TYPICAL EXTERIOR
GIRDER DETAIL

(TYPICAL AT WELDED BAYS)



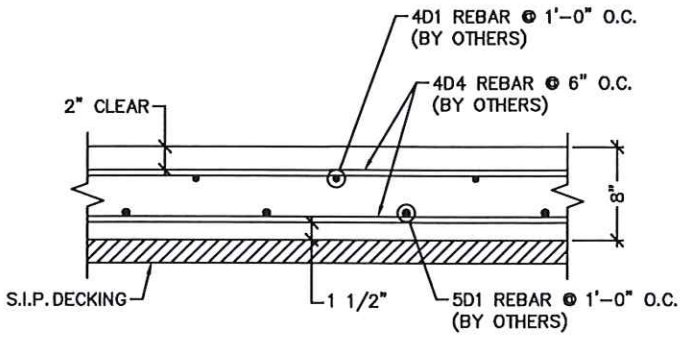
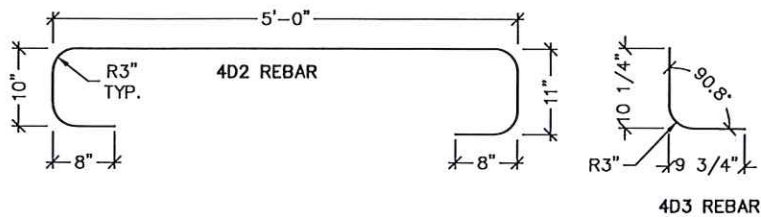
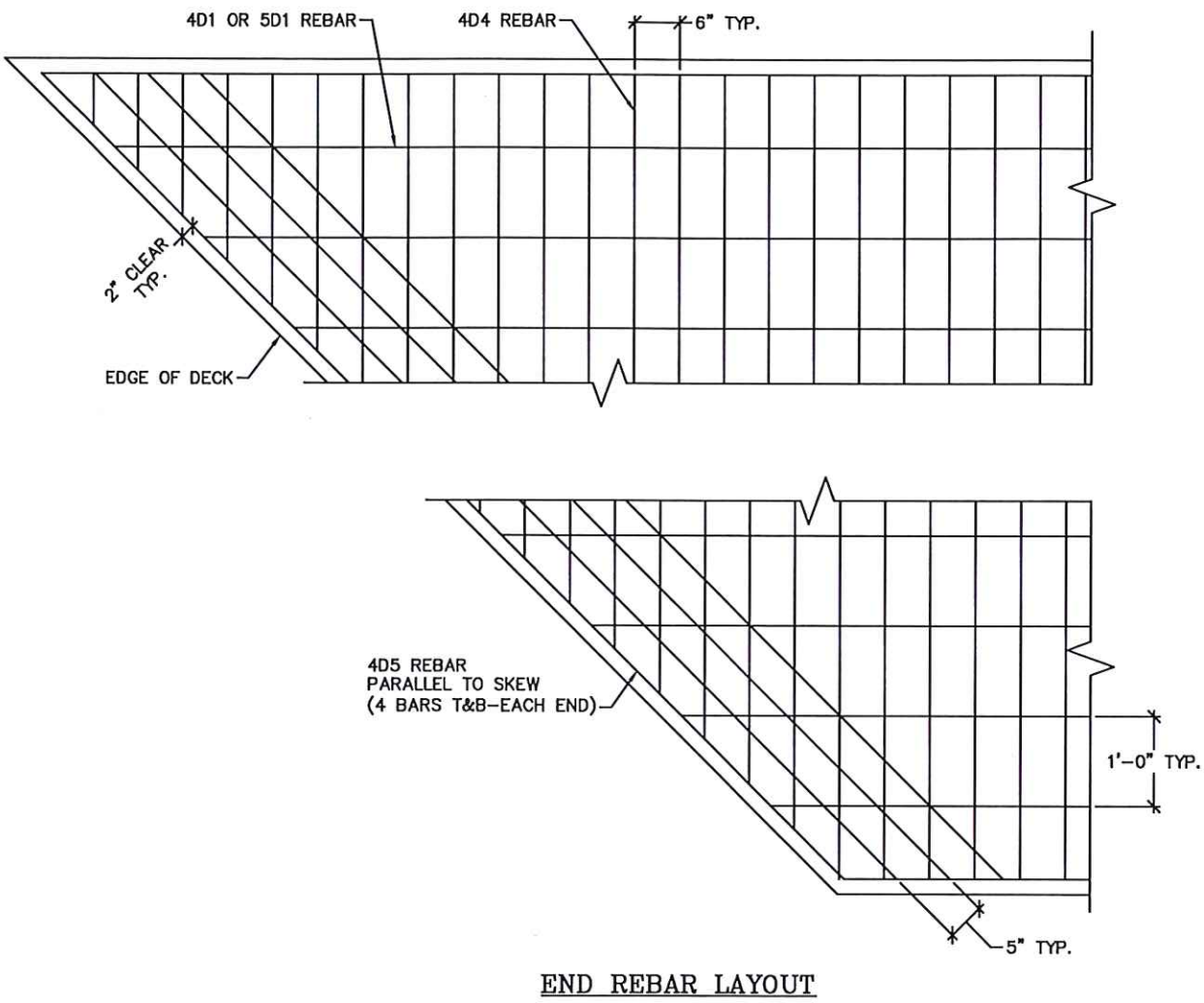
(TYPICAL AT BOLTED BAYS)

S.I.P. DECKING END SUPPORT DETAILS

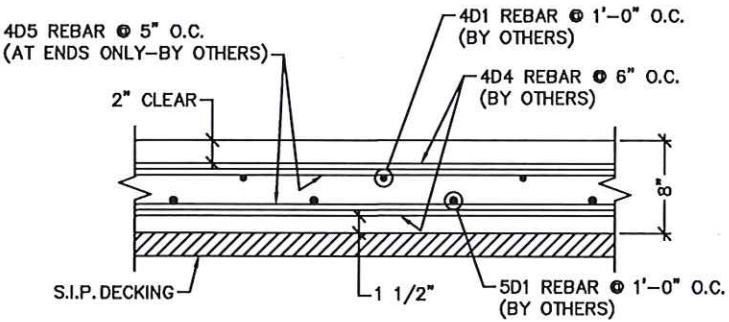
SUPPORT ANGLE CLIP
(4) REQUIREDCONTECH
FABRICATION
DRAWING7-19-22
CERTIFIED
FABRICATOR

100'-0" x 30'-0"				MESA TOP DRIVE SOUTH BRIDGE				ELITE PROPERTIES OF AMERICA, INC				FOUNTAIN, CO			
AB-1	10/29/2021	AS-BUILT FINALS	TLF	BY	AB	9/28/2021	AS-BUILT FINALS	TLF	REVISION DESCRIPTION	DATE	MARK	DATE	MARK	DATE	MARK
EO	7/22/2021	APPROVED FOR CONSTRUCTION	TLF	BY	EO	7/22/2021	APPROVED FOR CONSTRUCTION	TLF	REVISION DESCRIPTION	DATE	MARK	DATE	MARK	DATE	MARK

C:\AUTODESK V\AUT WORKING\2020\BEAM\1715\CAD\FABRICATION\REV AB-1621715-030 REV-0.DWG 10/29/2021 12:24 PM



TYPICAL DECK SECTION



TYPICAL DECK SECTION AT ENDS

- NOTES:
1. ALL CONCRETE & REBAR BY OTHERS
2. ALL QUANTITIES ARE FOR ONE BRIDGE

REBAR SCHEDULE					
MARK	TYPE	QUANTITY	LENGTH	REMARKS	
4D1	STRAIGHT	38	99'-6"	EPOXY*	
4D2	BENT	202	8'-1"	EPOXY	
4D3	BENT	202	1'-8"	EPOXY	
4D4	STRAIGHT	405	29'-7"	EPOXY	
4D5	STRAIGHT	16	41'-11"	EPOXY	
5D1	STRAIGHT	31	99'-6"	EPOXY*	

DIGIT PRECEDING LETTER DENOTES SIZE OF REBAR
* SEE CONCRETE NOTE 6 ON PG. 2 FOR SPLICING

CONTECH
FABRICATION
DRAWING

7-19-22

CERTIFIED
FABRICATOR

100'-0" x 30'-0"

MESA TOP DRIVE SOUTH BRIDGE

ELITE PROPERTIES of AMERICA, INC

FOUNTAIN, CO

AB-1	10/29/2021	AS-BUILT FINALS	TLF	BY
AB	9/28/2021	AS-BUILT FINALS	TLF	BY
E0	7/22/2021	APPROVED FOR CONSTRUCTION	TLF	BY
MARK	DATE	REVISION DESCRIPTION		

CONTECH
ENGINEERED SOLUTIONS LLC

www.contechsolutions.com

19650 Cr 16, Greeley, CO 80631

800-328-2047 320-345-9128 320-566-3148 FAX

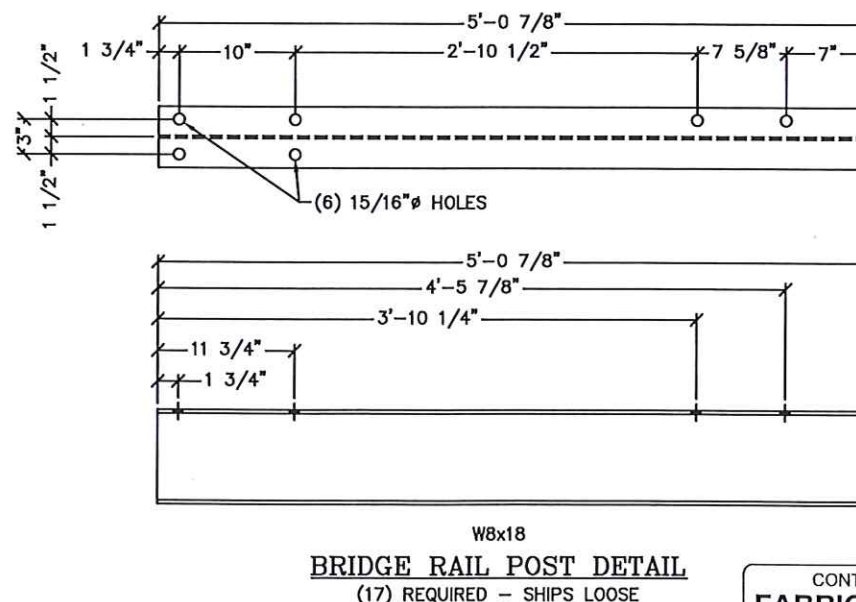
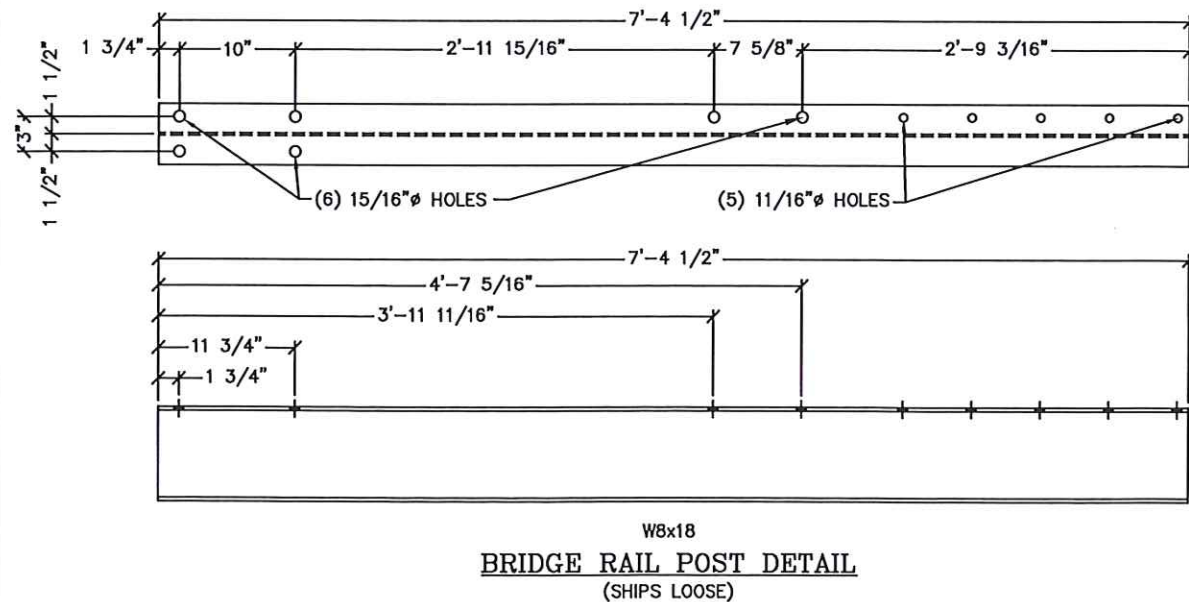
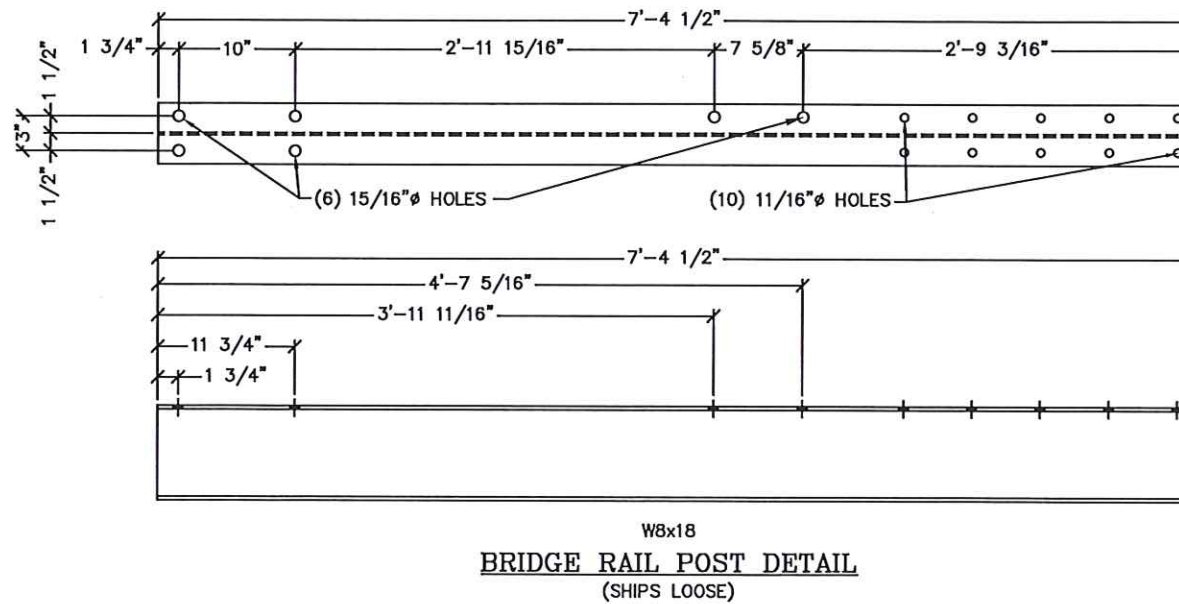
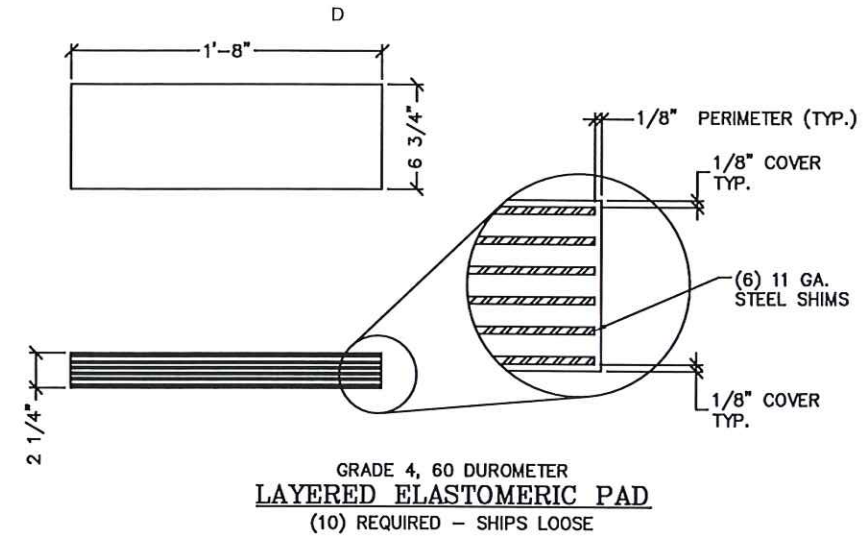
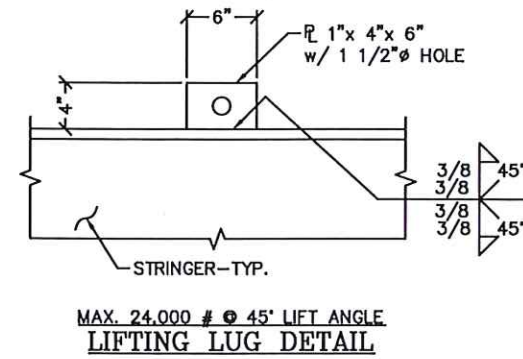
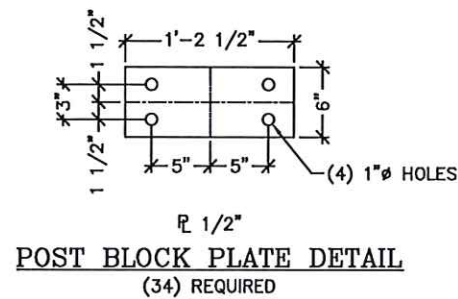
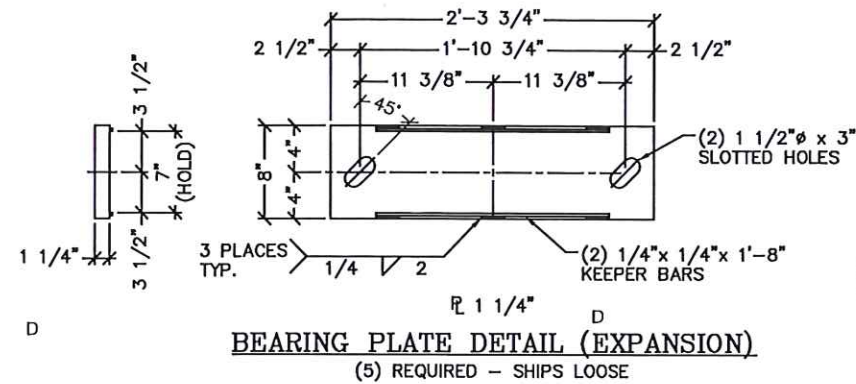
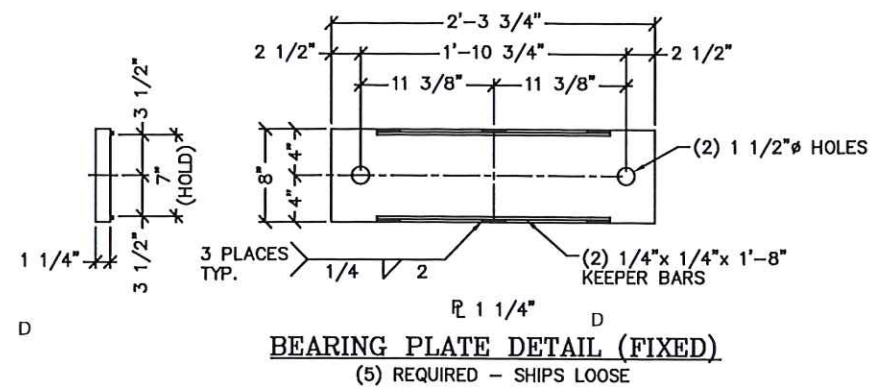
BIG R
BRIDGE

DATE: 7/24/2020

DESIGNED: NBE	DRAWN: RDH
CHECKED: NBE	APPROVED: NBE

PROJECT No.: 621715 SEQUENCE No.: 030

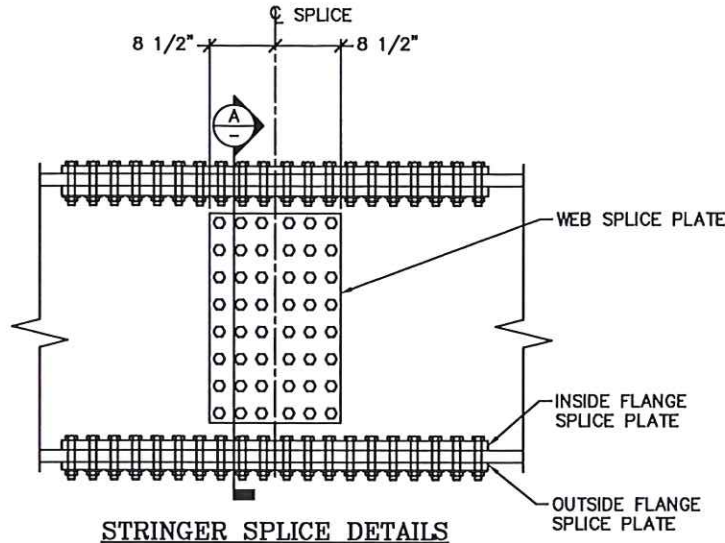
SHEET: 8 OF 12



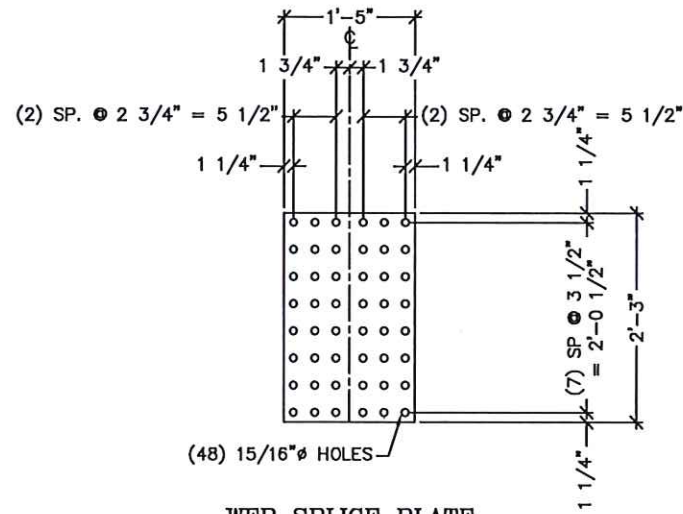
CONTECH
FABRICATION
DRAWING



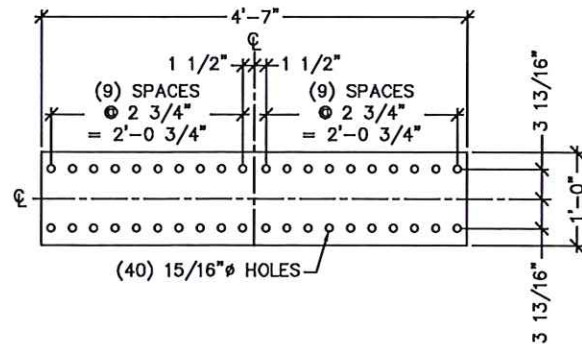
<p>100'-0" x 30'-0"</p> <p>MESA TOP DRIVE SOUTH BRIDGE</p> <p>ELITE PROPERTIES OF AMERICA, INC</p> <p>FOUNTAIN, CO</p>			
DATE:	7/24/2020	DESIGNED:	NBE
DRAWN:	RDH	CHECKED:	NBE
APPROVED:	NBE	PROJECT No.:	621715
SEQUENCE No.:	030	SHEET:	9 OF 12



STRINGER SPLICE DETAILS

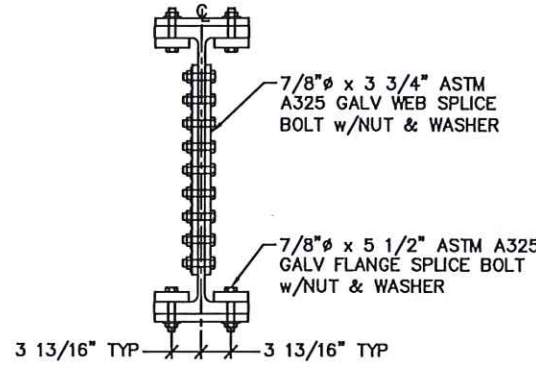


WEB SPLICE PLATE



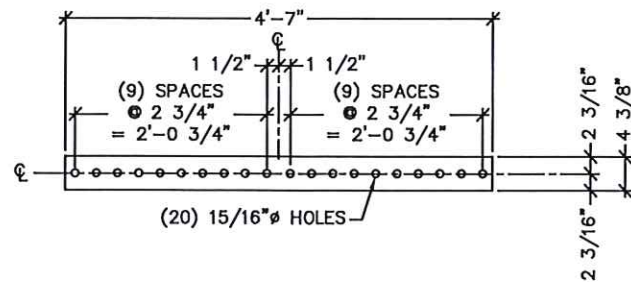
OUTSIDE TOP & BTM FLANGE SPLICE PLATE

SHOP NOTE:
15/16"Ø HOLES IN STRINGER
FLANGE AND WEB



SECTION A

CONTRACTOR NOTE:
FIELD WELDING TO BE
PERFORMED BY A WELDER
CERTIFIED PER AWS D1.5
BRIDGE WELDING CODE.



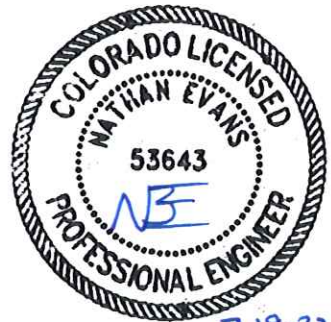
INSIDE TOP & BTM FLANGE SPLICE PLATE

MEMBERS	QTY	THICKNESS	SIZE	HOLES	BOLTS w/NUT & WASHER	BOLT QTY
WEB SPLICE PLATE	10	3/4"	1'-5" x 2'-3"	15/16"	7/8"Ø x 3 3/4" A325 GALV	240
INSIDE BTM FLANGE SPLICE PLATE	10	1 1/4"	4 3/8" x 4'-7"	15/16"	-	-
OUTSIDE BTM FLANGE SPLICE PLATE	5	1"	1'-0" x 4'-7"	15/16"	7/8"Ø x 5 1/2" A325 GALV	200
INSIDE TOP FLANGE SPLICE PLATE	10	1 1/4"	4 3/8" x 4'-7"	15/16"	-	-
OUTSIDE TOP FLANGE SPLICE PLATE	5	1"	1'-0" x 4'-7"	15/16"	7/8"Ø x 5 1/2" A325 GALV	200

The design and information shown on this drawing is the property of Contech Engineered Solutions, LLC and is to be used only for the project and location identified herein. It is not to be reproduced, stored in a retrieval system, or transmitted in any form or by any means, electronic, mechanical, photocopying, recording, or by any information storage and retrieval system, without the prior written consent of Contech. Failure to comply with these terms is a breach of contract and Contech shall not be responsible for any consequences. If discrepancies between the supplied information and the actual field conditions are noted, the contractor shall immediately report them to Contech for re-evaluation of the design. Contech shall not be responsible for any consequences of incomplete or inaccurate information supplied by others.

REVISION DESCRIPTION	DATE	BY
AS-BUILT FINALS	10/29/2021	AB-1
AS-BUILT FINALS	9/28/2021	AB
APPROVED FOR CONSTRUCTION	7/22/2021	E0
REVISION DESCRIPTION	DATE	MARK

100'-0" x 30'-0"
MESA TOP DRIVE SOUTH BRIDGE
ELITE PROPERTIES OF AMERICA, INC
FOUNTAIN, CO



CONTECH
ENGINEERED SOLUTIONS LLC
www.conteches.com
11662 C-46 Driveway, CO 80031
800-328-2047 320-560-3148 FAX

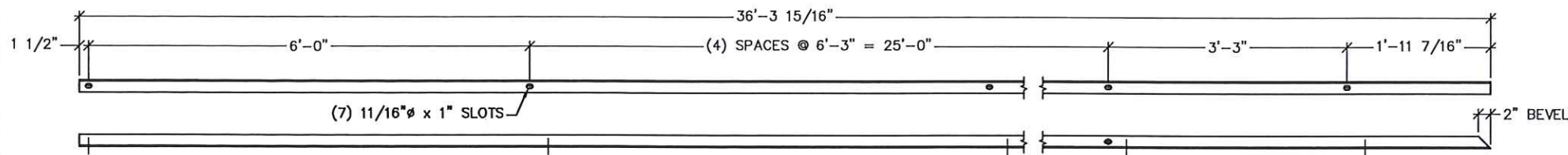
BIG R
BRIDGE

DATE:	7/24/2020
DESIGNED:	NBE
DRAWN:	RDH
CHECKED:	NBE
APPROVED:	NBE
PROJECT No.:	621715
SEQUENCE No.:	030
SHEET:	10 OF 12

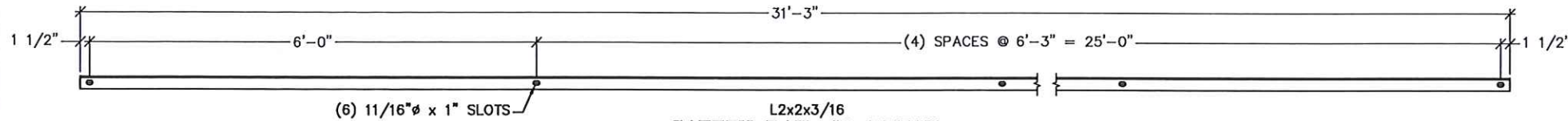
CONTECH
FABRICATION
DRAWING



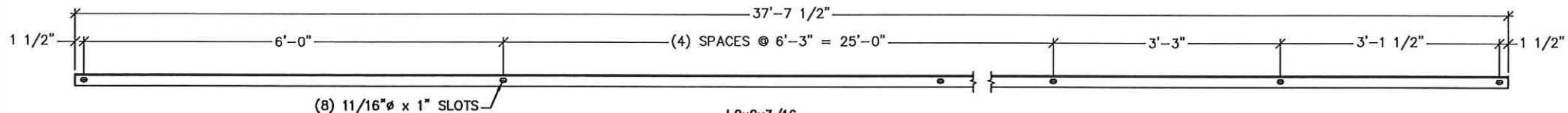
C:\AUTODESK VALLT WORKING\2020\BEM\621715\CAD\FABRICATION\REV AB-1621715-003 REV-0.DWG 10/29/2021 12:25 PM



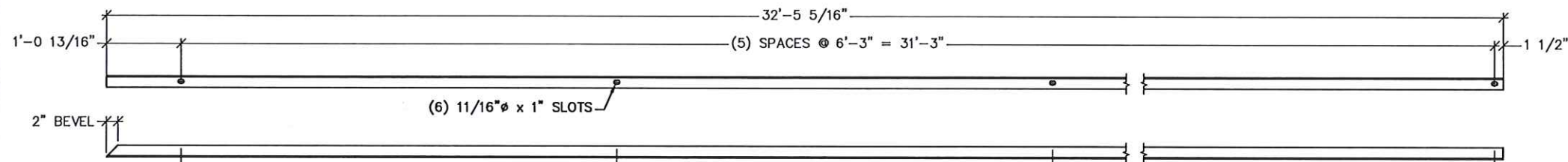
L2x2x3/16
SAFETY RAIL #1 DETAIL
(20) REQUIRED - SHIPS LOOSE



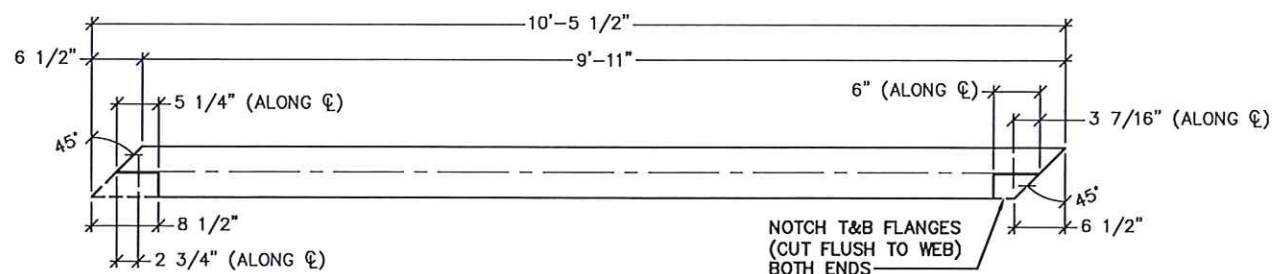
L2x2x3/16
SAFETY RAIL #2 DETAIL
(60) REQUIRED - SHIPS LOOSE



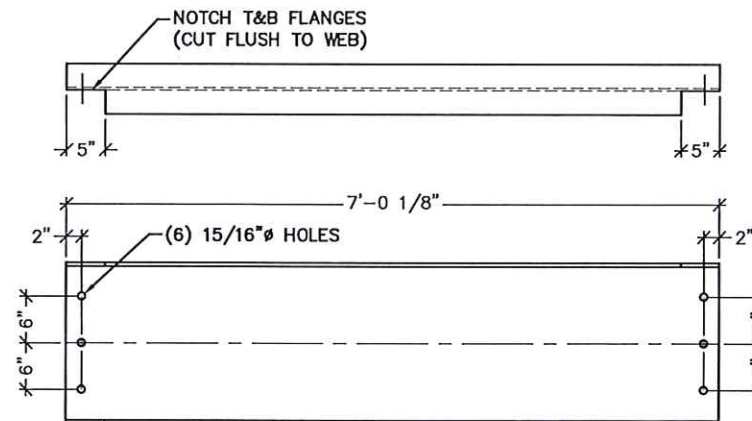
L2x2x3/16
SAFETY RAIL #3 DETAIL
(20) REQUIRED - SHIPS LOOSE



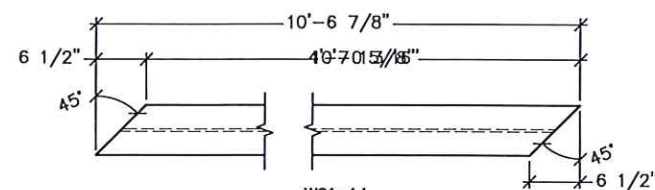
L2x2x3/16
SAFETY RAIL #4 DETAIL
(20) REQUIRED - SHIPS LOOSE



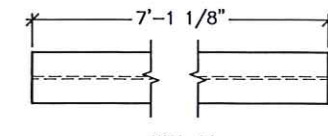
W21x44
BOLTED MID DIAPHRAGM DETAIL
(2) REQUIRED - SHIPS LOOSE



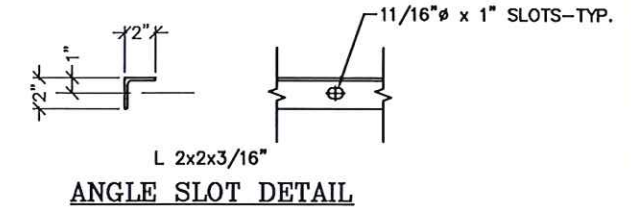
W21x44
BOLTED MID DIAPHRAGM DETAIL
(3) REQUIRED - SHIPS LOOSE



WELDED END DIAPHRAGM DETAIL
(6) REQUIRED - SHIPS LOOSE



WELDED MID DIAPHRAGM DETAIL
(9) REQUIRED - SHIPS LOOSE



CONTECH
FABRICATION
DRAWING



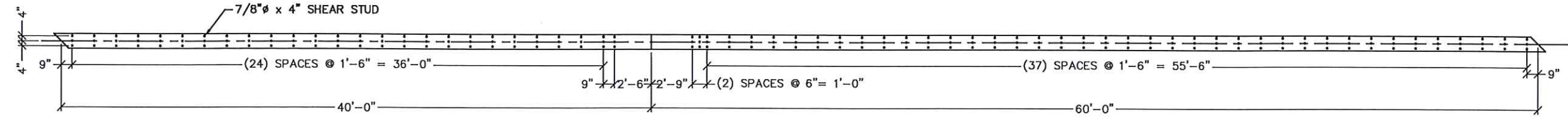
100'-0" x 30'-0"
MESA TOP DRIVE SOUTH BRIDGE
ELITE PROPERTIES of AMERICA, INC
FOUNTAIN, CO

CONTECH
ENGINEERED SOLUTIONS LLC
www.conteches.com
10002 Cr. 68, Denver, CO 80031
800-328-2047 320-566-5148 FAX
BIG R
BRIDGE

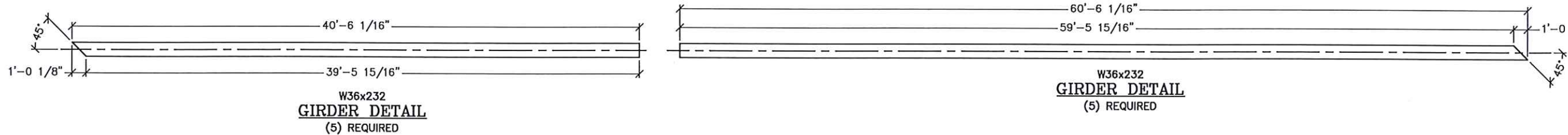
DATE: 7/24/2020
DESIGNED: NBE
CHECKED: NBE
PROJECT No.: 621715
SEQUENCE No.: 030
DRAWN: RDH
APPROVED: NBE
SHEET: 11 OF 12

BY	DATE	REVISION DESCRIPTION
TLF	10/29/2021	AS-BUILT FINALS
TLF	9/28/2021	AS-BUILT FINALS
TLF	7/22/2021	APPROVED FOR CONSTRUCTION

C:\AUTODESK VAULT\WORKING\2020\BEM\621715\CAD\FABRICATION\REV AB-1621715-036 REV-0.DWG 10/29/2021 12:25 PM

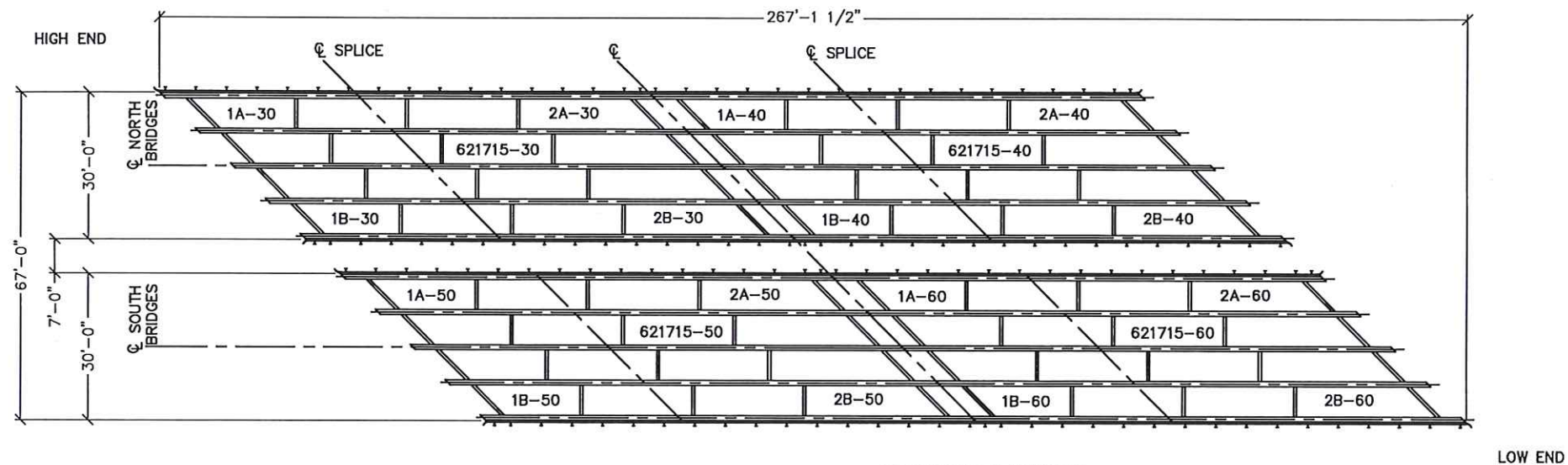


SHEAR STUD DETAIL

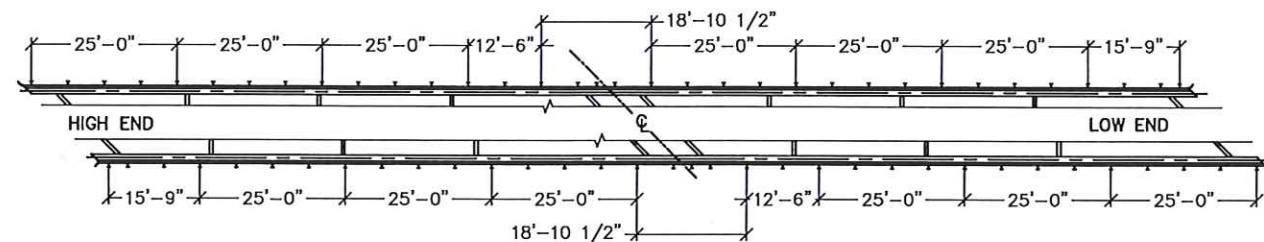


W36x232
GIRDER DETAIL
(5) REQUIRED

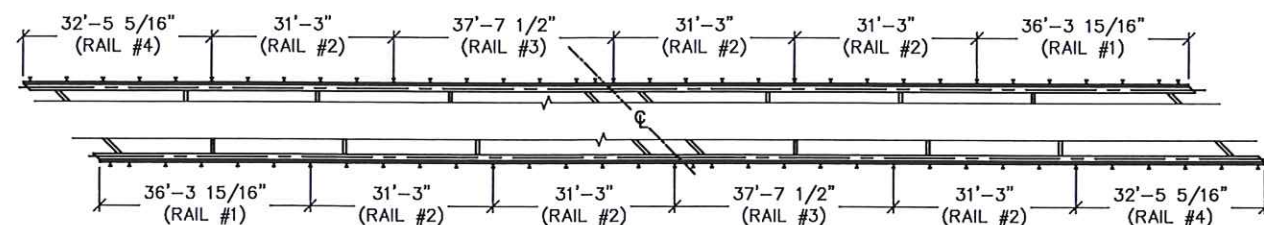
W36x232
GIRDER DETAIL
(5) REQUIRED



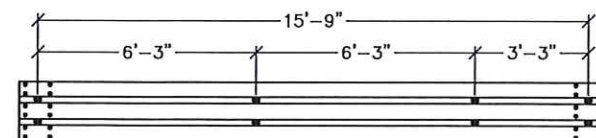
PROJECT LAYOUT



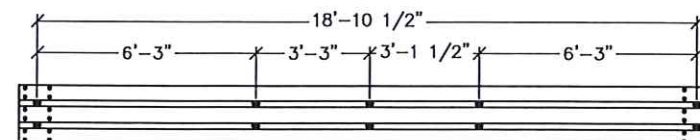
THRIE-BEAM BRIDGE RAIL LAYOUT
TYPICAL 621715-30 & 621715-40
TYPICAL 621715-50 & 621715-60



ANGLE SAFETY RAIL LAYOUT
TYPICAL 621715-30 & 621715-40
TYPICAL 621715-50 & 621715-60



END THRIE-BEAM RAIL LAYOUT
(TYPICAL AT SHORT CORNER OF EACH BRIDGE)
(4) REQUIRED



THRIE-BEAM RAIL
AT BRIDGE GAP LAYOUT
(TYPICAL BETWEEN 621715-30 & 621715-40)
(TYPICAL BETWEEN 621715-50 & 621715-60)
(4) REQUIRED

NOTE: ALL RAIL SECTIONS NOT SHOWN
ARE STANDARD MILL PUNCH.

CONTECH
FABRICATION
DRAWING



The design and information shown on this drawing is provided as a guide only. It is the responsibility of the user to verify the accuracy of the information and to ensure that the design meets the requirements of the applicable codes and standards. The user is advised to consult with the design engineer for any questions or concerns.

DATE	BY	REVISION DESCRIPTION
10/29/2021	AB-1	AS-BUILT FINALS
9/28/2021	AB	AS-BUILT FINALS
7/22/2021	E0	APPROVED FOR CONSTRUCTION
	MARK	

100'-0" x 30'-0"
MESA TOP DRIVE SOUTH BRIDGE
ELITE PROPERTIES OF AMERICA, INC
FOUNTAIN, CO

CONTECH
ENGINEERED SOLUTIONS LLC
www.conteches.com
10065 Cr 6th Dr, Fountain, CO 80821
800-338-2347 320-445-9128 320-566-1148 FAX

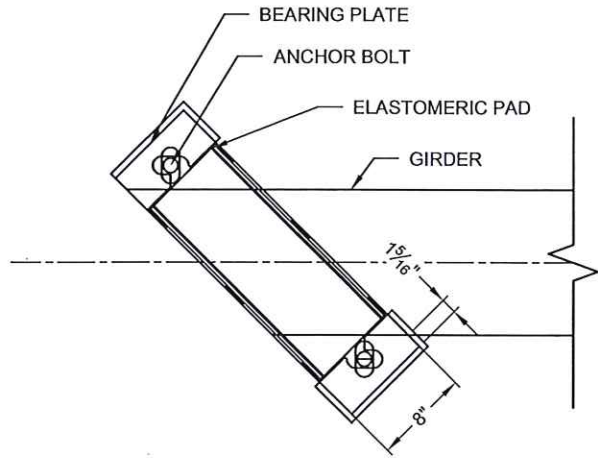
BIG R
BRIDGE

DATE:	7/24/2020
DESIGNED:	NBE
DRAWN:	RDH
CHECKED:	NBE
APPROVED:	NBE
PROJECT No.:	621715
SEQUENCE No.:	030
SHEET:	12 OF 12

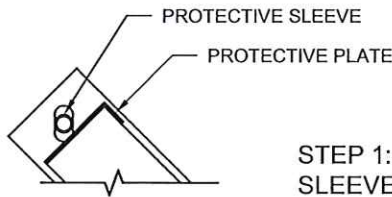
I:\MERLIN\PROJECTS\ACTIVE\621700\621715-30-BIG R MODULAR ROLLED GIRDER\DRAWINGS\FABRICATION\621715-30 REV-0 - BEARING FIELD WORK.DWG 5/2/2022 3:24 PM

GENERAL NOTES:

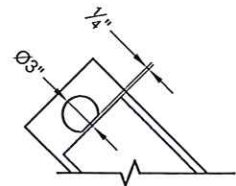
1. CONTECH ENGINEERED SOLUTIONS HAS AISC QUALITY CERTIFIED BRIDGE FABRICATION - ADVANCED (MAJOR) WITH A FRACTURE CRITICAL AND SOPHISTICATED PAINT ENDORSEMENT.
2. MATERIALS: (UNLESS NOTED OTHERWISE):
 - a. STRUCTURAL STEEL: ASTM A588 WEATHERING STEEL
3. ALL WELDING SHALL USE THE GAS METAL ARC WELDING OR FLUX CORED ARC WELDING PROCESS.



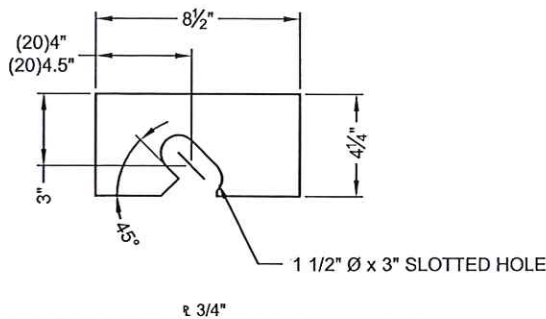
EXISTING CONDITION



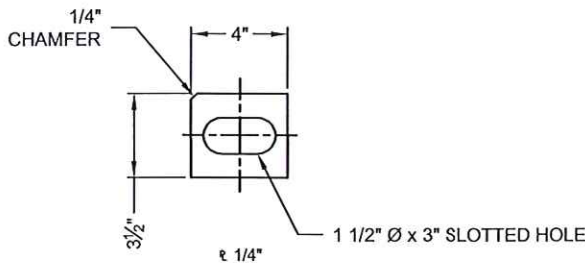
STEP 1: APPLY PROTECTIVE SLEEVE TO ANCHOR BOLT AND PLATE TO SIDE OF BEARING PAD



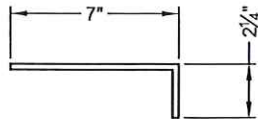
STEP 2: CUT 3" DIA. HOLE CENTERED AT ANCHOR BOLT TAKING CARE TO STAY $\frac{1}{4}$ " AWAY FROM ELASTOMERIC BEARING PAD.



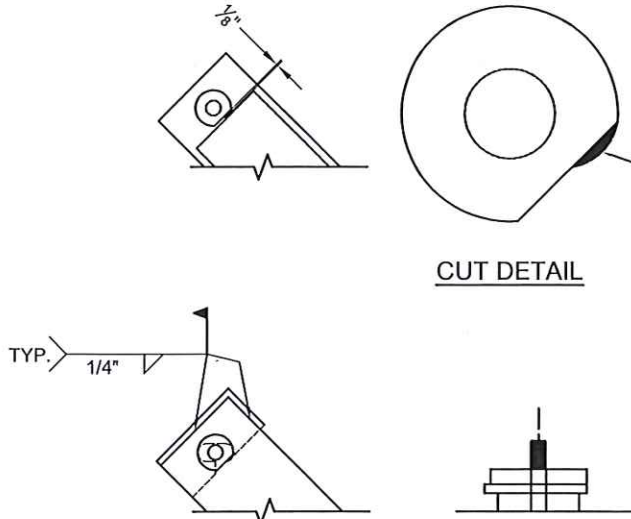
ANCHOR BOLT GUIDE PLATE DETAIL



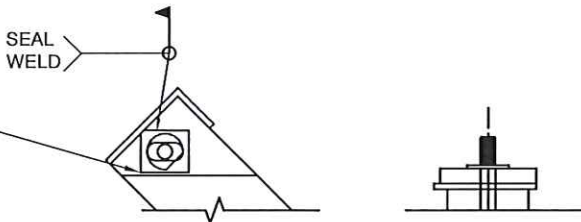
COVER WASHER DETAIL



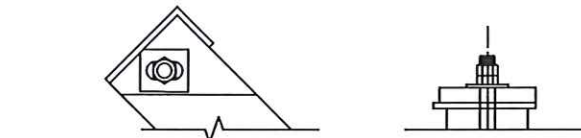
PROTECTIVE PLATE DETAIL



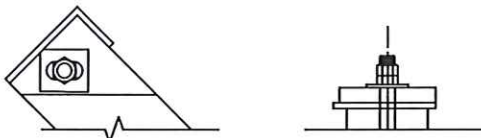
STEP 3: GRIND $\frac{1}{8}$ " AT TOP OF FLAT CUT TO PROVIDE FULL SLOT DIMENSIONS



STEP 4: INSERT ANCHOR BOLT GUIDE PLATE UNDERNEATH BEARING PLATE AND WELD ALONG EXPOSED SIDES.



STEP 5: PLACE COVER WASHER ON TOP OF BEARING PLATE AND SEAL WELD INTO PLACE.



STEP 6: REMOVE PROTECTIVE SLEEVE AND PLATE, INSTALL NUTS ON ANCHOR BOLTS PER ORIGINAL PLANS.



5-2-22



CONTECH
ENGINEERED SOLUTIONS LLC
www.contechES.com

BIG R
BRIDGE

100'-0" x 30'-0"
MESA TOP DRIVE SOUTH BRIDGE
ELITE PROPERTIES of AMERICA, INC
FOUNTAIN, CO

DATE:	7/24/2020
DESIGNED:	NBE
DRAWN:	RDH
CHECKED:	NBE
APPROVED:	NBE
PROJECT No.:	621715
SEQUENCE No.:	
SHEET:	1 OF 1

RP	4/29/2022	BRIDGE BEARING FIELD REPAIR	NBE	TLF	TLF	BY
AB-1	10/29/2021	AS-BUILT FINALS				
AB	9/28/2021	AS-BUILT FINALS				
EO	7/22/2021	APPROVED FOR CONSTRUCTION				
MARK	DATE	REVISION DESCRIPTION				

The design and information shown on this drawing is provided as a service to the project owner, engineer or contractor. It is not to be used for any other purpose without the prior written consent of Contech. Failure to follow the instructions and details shown on this drawing may result in a design error or other consequences. Contech does not accept any liability for design or responsibility for such use.

If discrepancies between the supplied information upon which the drawing is based and actual field conditions are encountered as site work progresses, these discrepancies must be reported to Contech immediately. Contech will not be responsible for any design or other consequences resulting from such use.