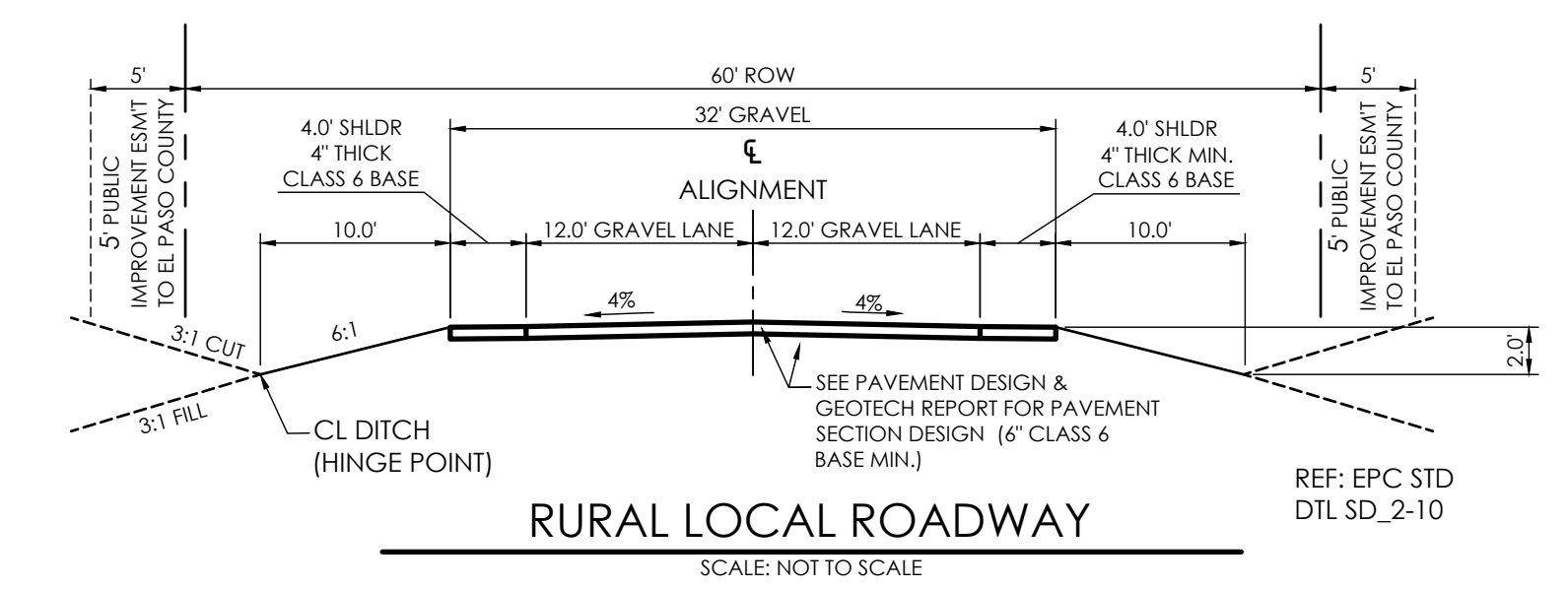
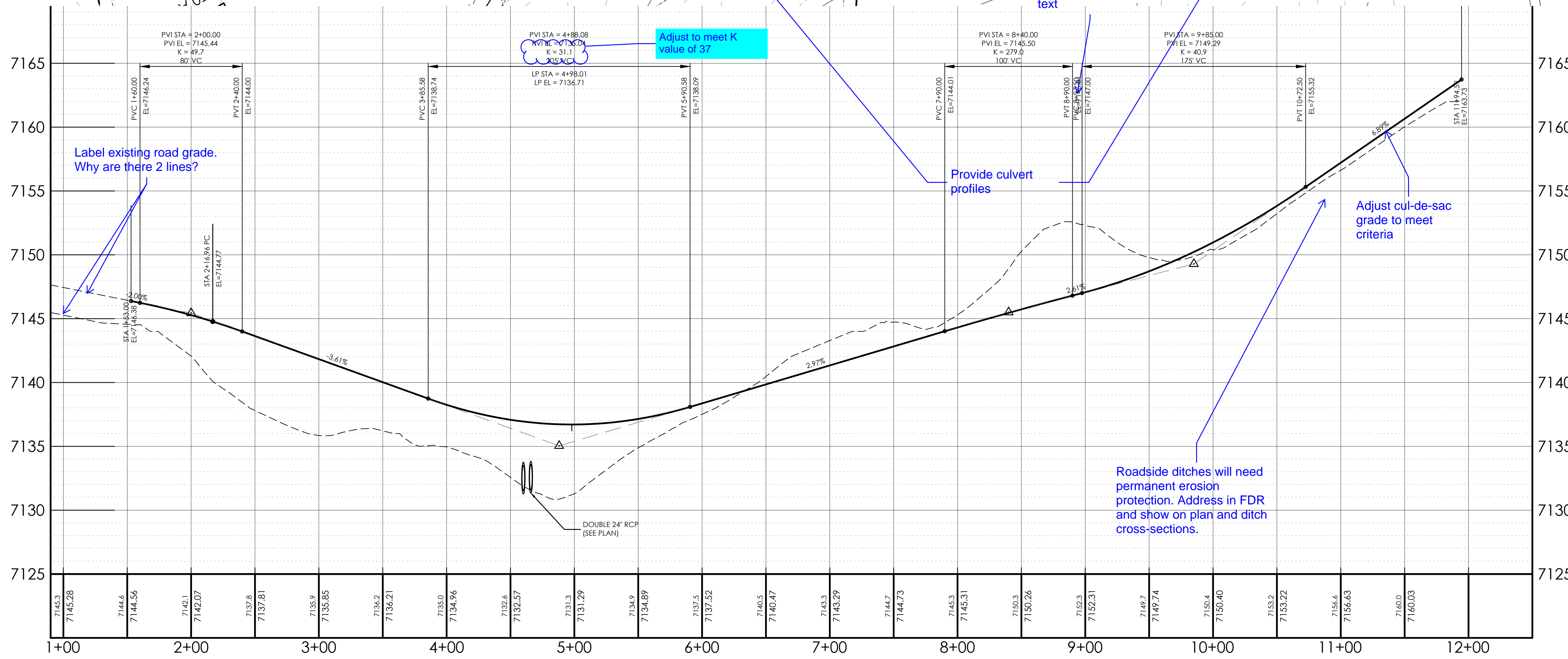
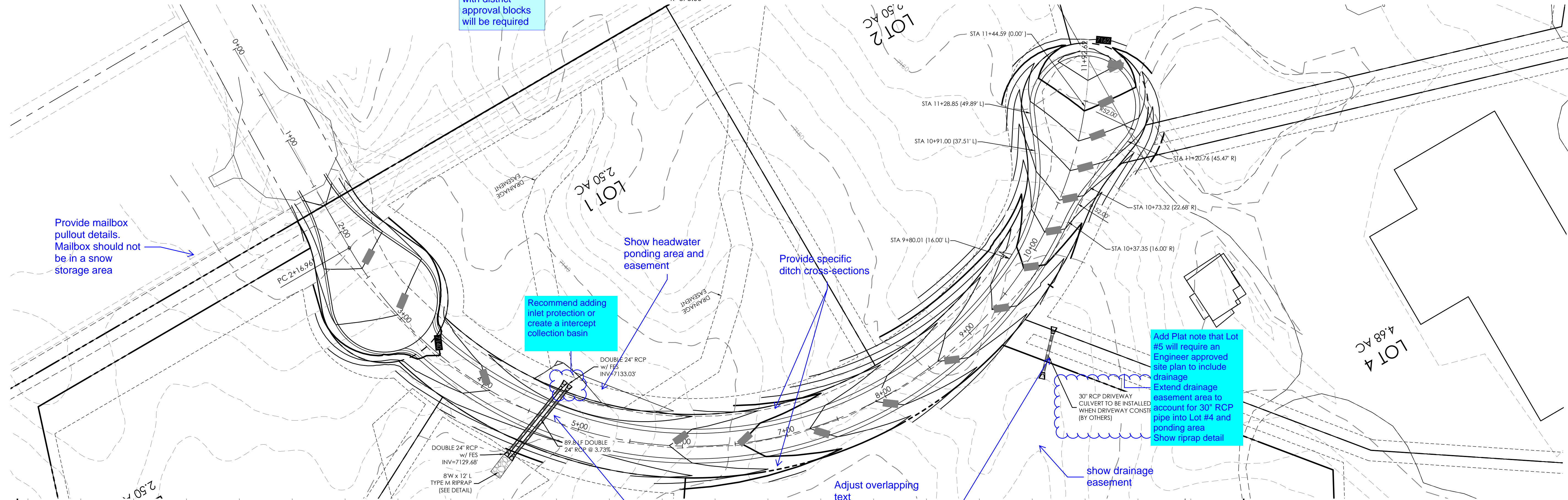


Show and label
water lines. Plans
with district
approval blocks
will be required

NOTES:
1.) RE: GRADING & EROSION CONTROL PLAN BY M.V.E., INC

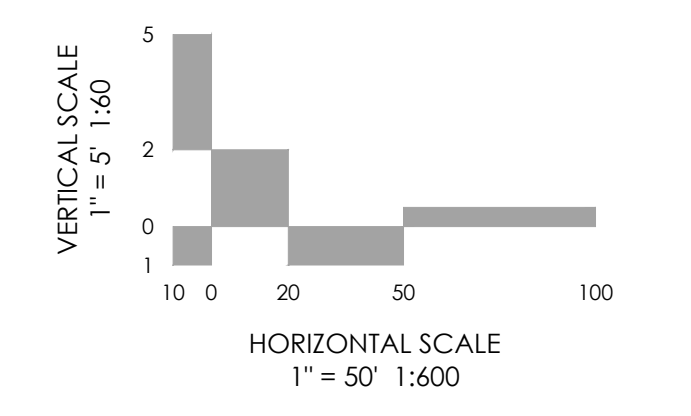


NOTE: A PAVEMENT DESIGN REPORT WILL BE REQUIRED BEFORE PLACEMENT OF GRAVEL.

BENCHMARK:
BASIS OF BEARINGS: BEARINGS ARE BASED ON THE WEST LINE OF THE SOUTHWEST QUARTER OF THE NORTHEAST QUARTER (SW 1/4 NE 1/4) OF SECTION 29, MONUMENTED AT THE NORTH WITH A 2 1/2 INCH ALUMINUM CAP STAMPED "N 1/16 SEC. 29 2005 PLS 26965", AND THE AT THE SOUTH WITH A 3 1/4 INCH ALUMINUM CAP STAMPED "1997 T12S R6SW C1/4 PLS 4842" AND IS ASSUMED TO BEAR N00°13'10"W A DISTANCE OF 1,324.32 FEET.

DESIGN DATA:
SIDEWALKS: WIDTH N/A
LOCATION: Attached Detached
DESIGN SPEED: 30 MPH
CURB TYPE:
ROW WIDTH: 60' FL-FL N/A
STREET TYPE: RURAL LOCAL

PAVEMENT:
TYPE: HMA PCC
THICKNESS: _____
COMPOSITE SECTION:
HMA _____ BASE _____
SUBGRADE STABILIZATION:
CHEMICAL TYPE _____ MECHANICAL THICKNESS _____



REVISIONS

MVE PROJECT 61145
MVE DRAWING -CON-PP1
JULY 1, 2022
DESIGNED BY CCC
DRAWN BY WCG
CHECKED BY _____
AS-BUILT BY _____
CHECKED BY _____

EAGLE WING DRIVE
FROM STA 00+00.00
TO STA 11+44.59
EAGLE RISING FILING NO. 1
C2.2
SHEET 2 OF 2