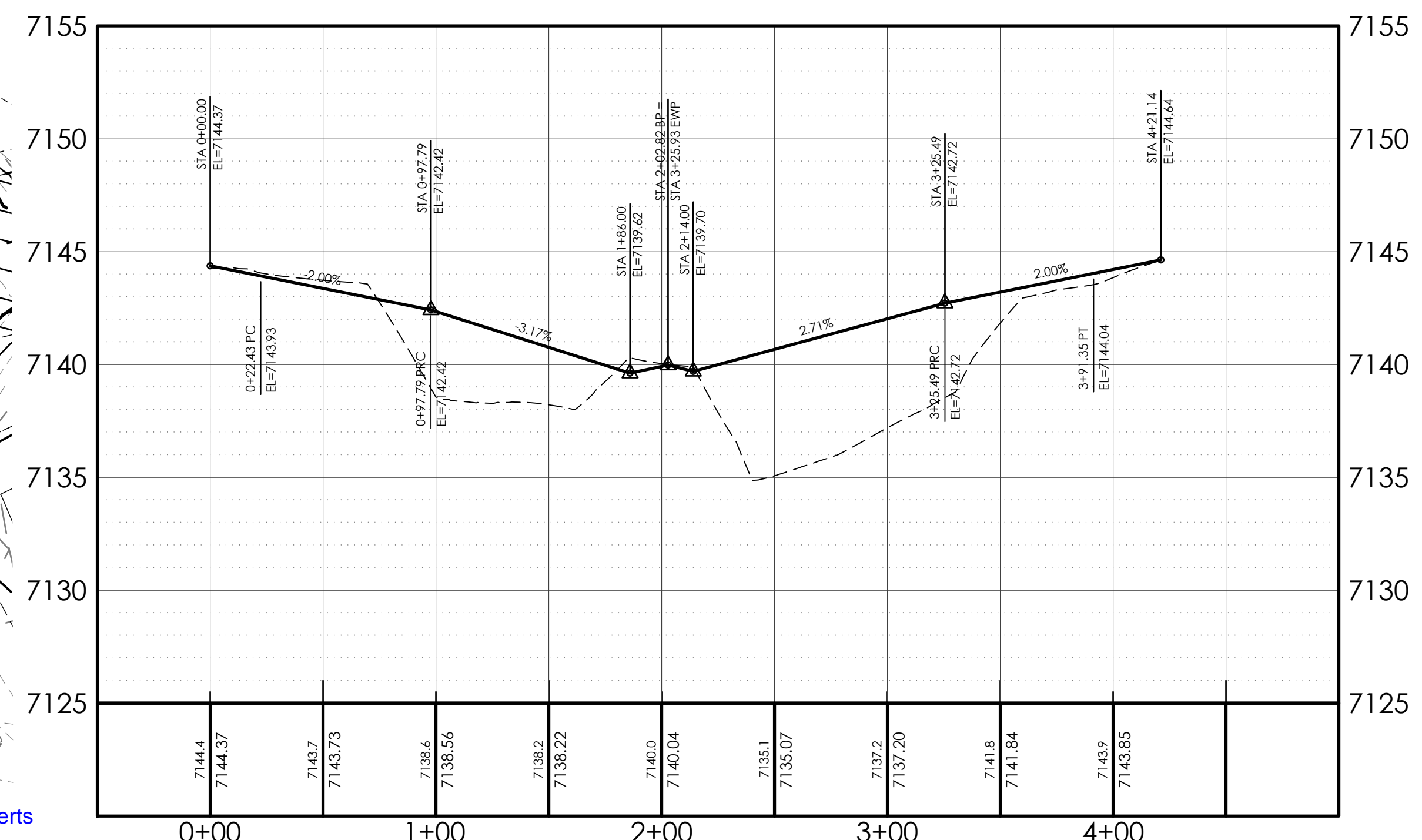
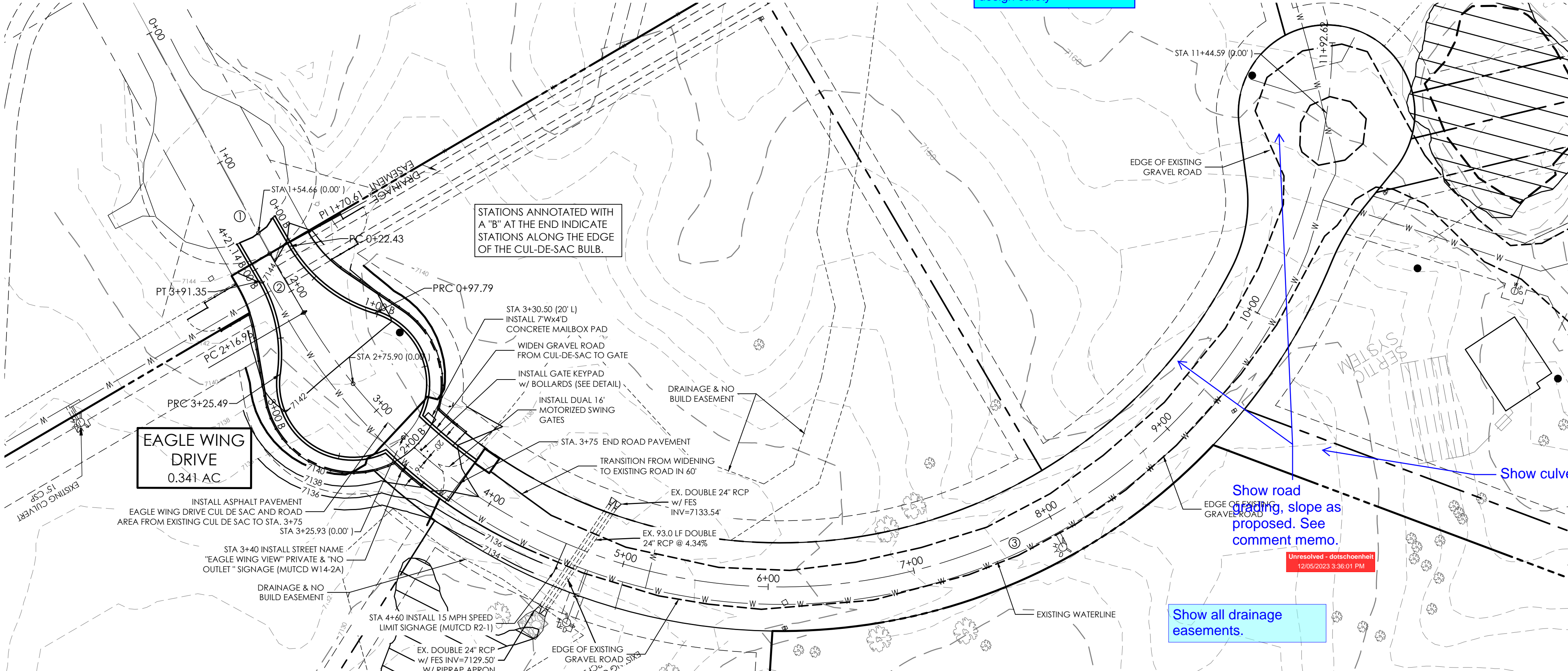


EAGLE WING DRIVE CENTERLINE DATA:
 BEGIN STA=1+00.00 N: 1,416.622,07 E: 3,229.893,71'
 PROP LINE = STA=1+70.61 N: 1,416.620,40 E: 3,229.964,30'
 PC = STA=2+16.96 N: 1,416.620,53 E: 3,230,010,65'
 L=927.63' Δ=14°14'53" R=375.00'

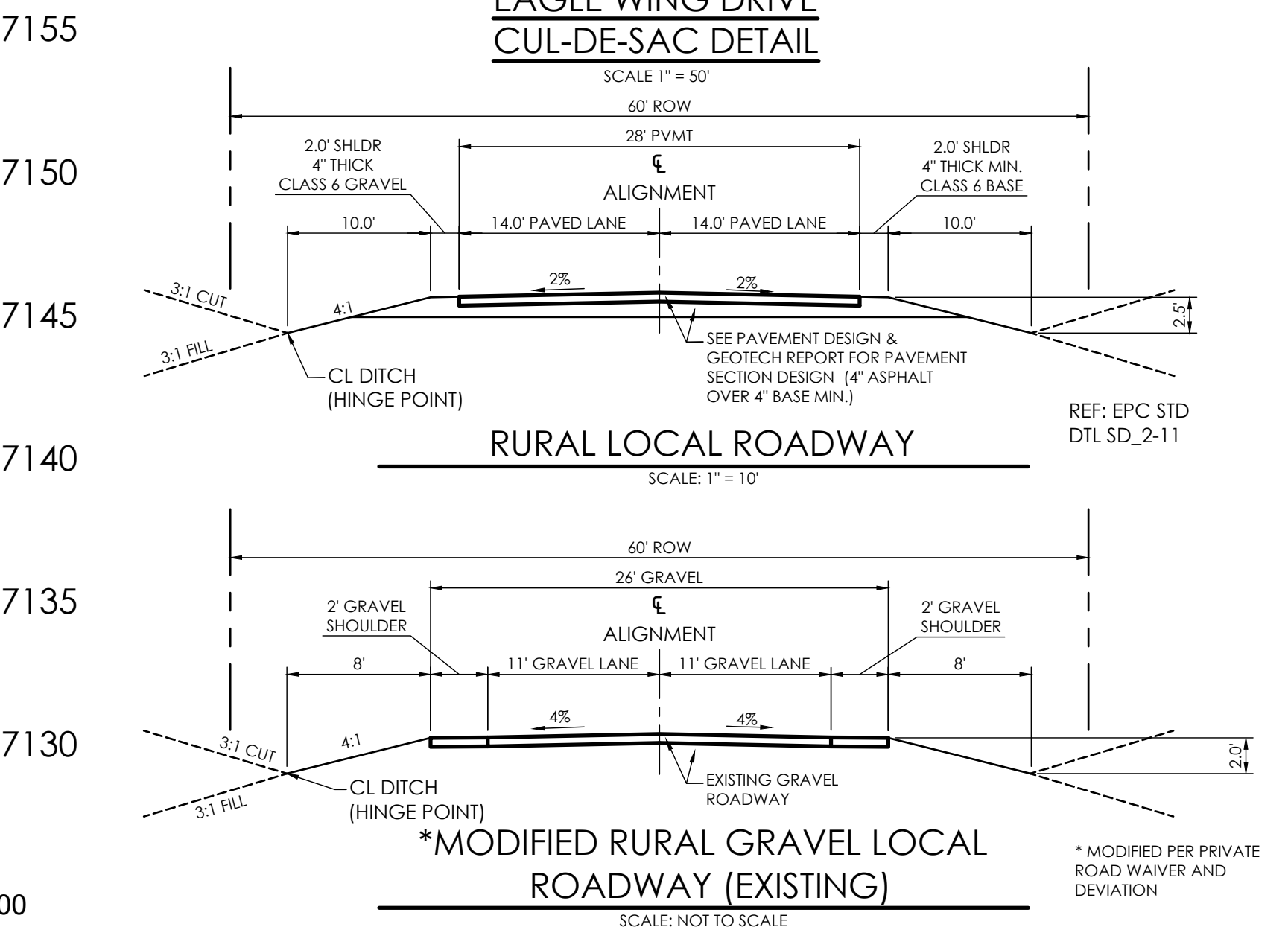
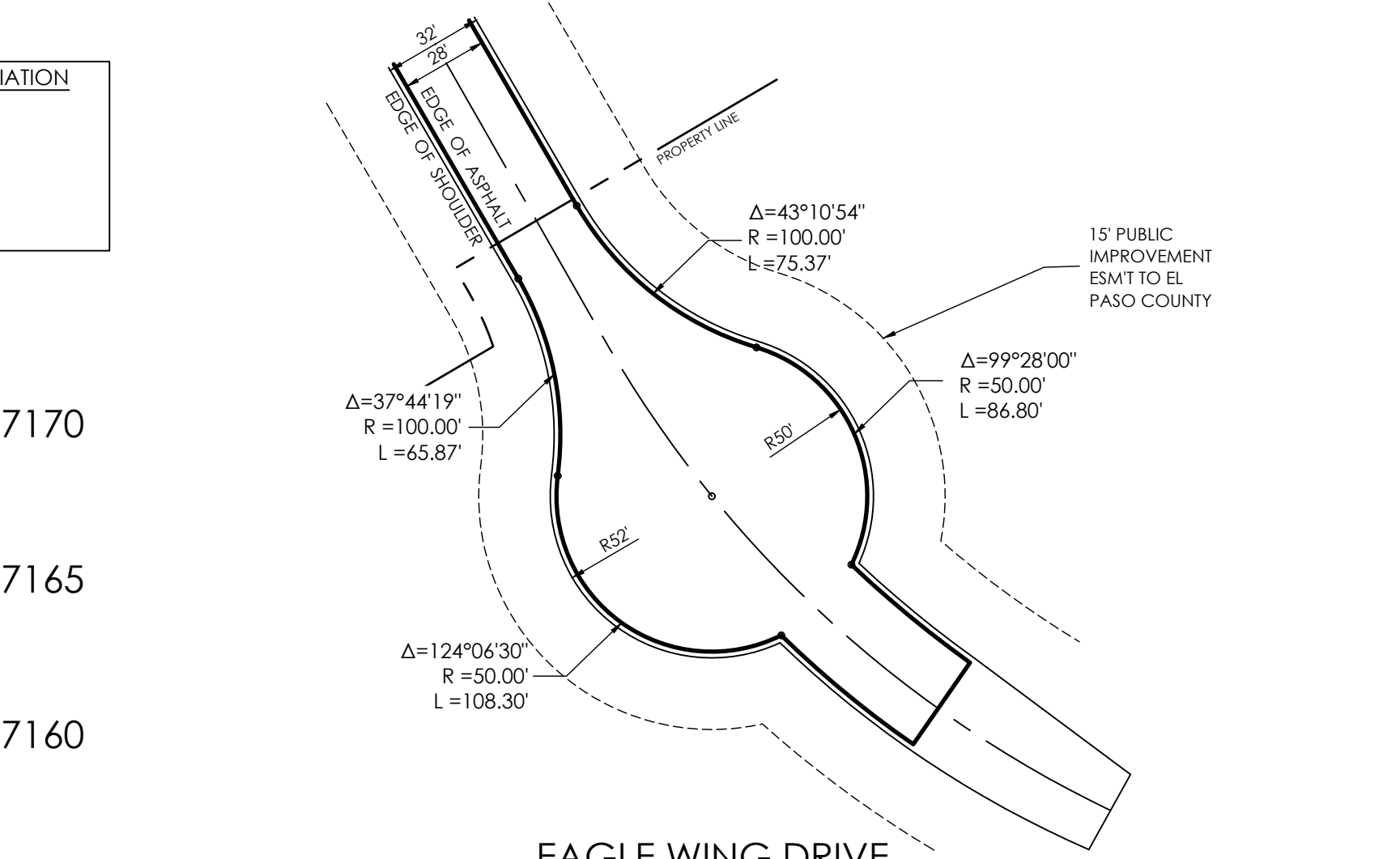
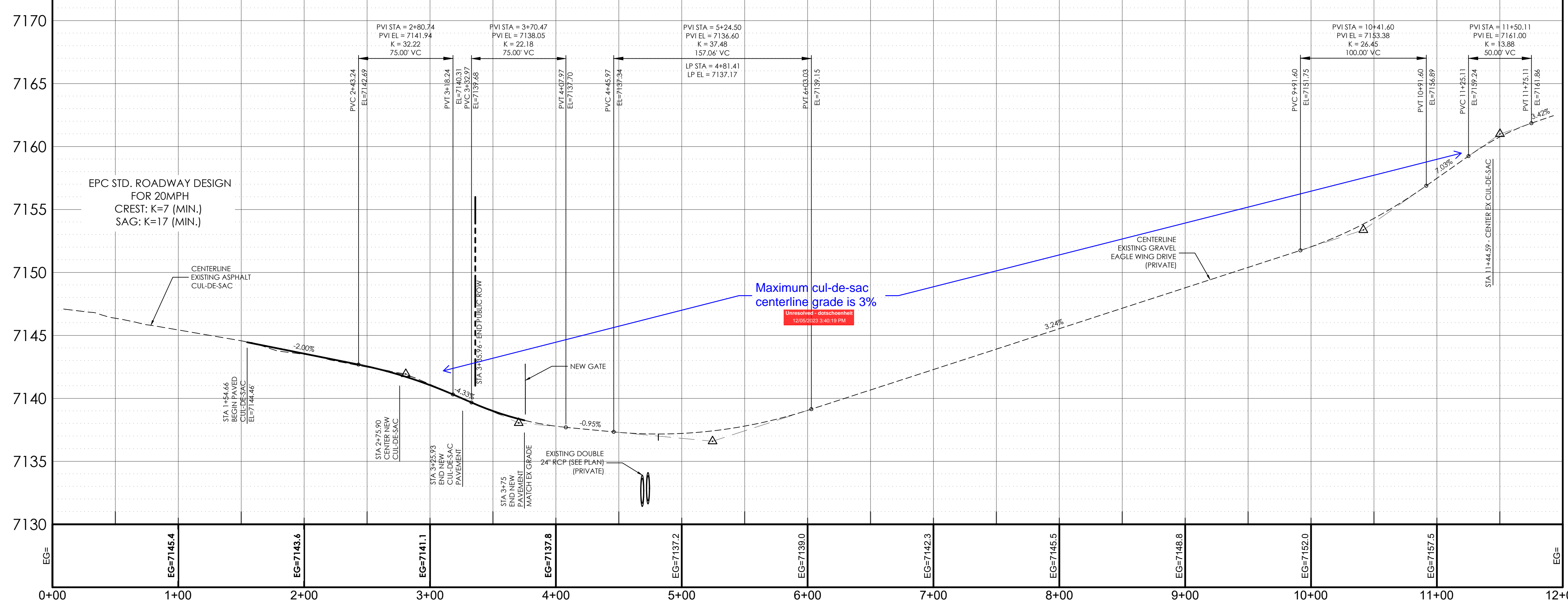
Note no Fire District waivers or deviation are supported that impact road design safety

CENTER CUL-DE-SAC = STA=11+44.59 N: 1,417,290,760 E: 3,230,241,011'



EAGLE WING DR (EWD) ENTRANCE BULB PROFILE (BP)

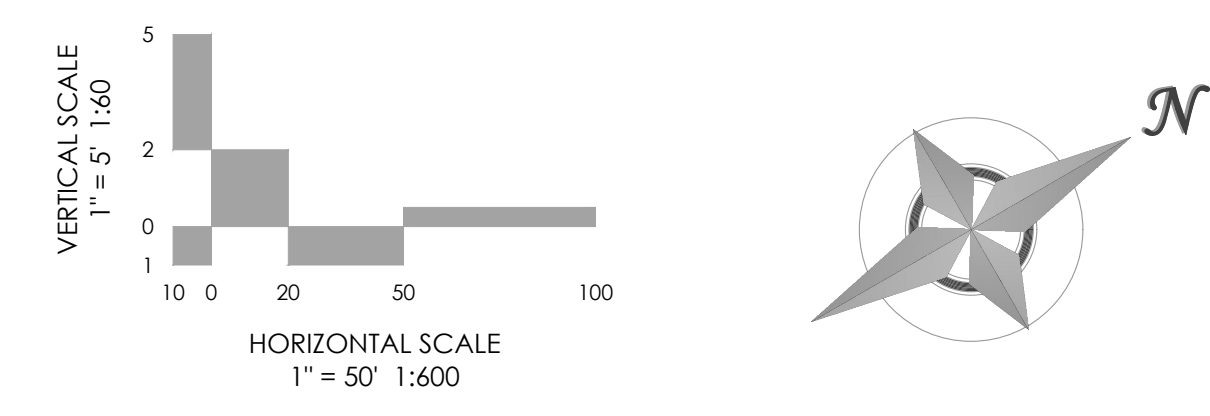
EAGLE WING DRIVE (PUBLIC) & EAGLE WING VIEW (PRIVATE)
 STA 1+54.66 TO 3+35.96 & STA 3+35.96 TO 11+92.62



BENCHMARK:
 BASIS OF BEARINGS: BEARINGS ARE BASED ON THE WEST LINE OF THE SOUTHWEST QUARTER OF THE NORTHEAST QUARTER (SW 1/4 NE 1/4) OF SECTION 29, MONUMENTED AT THE NORTH WITH A 2 1/2 INCH ALUMINUM CAP STAMPED 'N 1/16 SEC. 29 2005 PLS 26965', AND THE AT THE SOUTH WITH A 3 1/4 INCH ALUMINUM CAP STAMPED '1997 T12S R6SW C1/4 PLS 4842' AND IS ASSUMED TO BEAR N00°13'10"W A DISTANCE OF 1,324.32 FEET.

DESIGN DATA:
 SIDEWALKS: WIDTH N/A
 LOCATION: Attached Detached
 DESIGN SPEED 20 MPH / POSTED 15 MPH
 CURB TYPE: 8" 6" 4" 3"
 ROW WIDTH: 60' FL-FL N/A
 STREET TYPE: GRAVEL RURAL LOCAL

PAVEMENT:
 TYPE: HMA PCC
 THICKNESS: _____
 COMPOSITE SECTION:
 HMA _____ BASE _____
 SUBGRADE STABILIZATION:
 CHEMICAL TYPE _____ MECHANICAL THICKNESS _____



MVE, INC.
 ENGINEERS SURVEYORS
 MVE
 1903 Irelary street colorado springs co 80909 719.635.5736
 suite 200 co 80909 www.mvecivil.com

REVISIONS

MVE PROJECT **61145** **EAGLE WING DRIVE / EAGLE WING VIEW**
 MVE DRAWING **-CON-PP1** FROM STA 00+00.00 TO STA 11+44.59
NOVEMBER 13, 2023
 DESIGNED BY CCC
 DRAWN BY WCG
 CHECKED BY _____
 AS-BUILT BY _____
 CHECKED BY _____

EAGLE RISING FILING NO. 1
C2.2
 SHEET 2 OF 2