

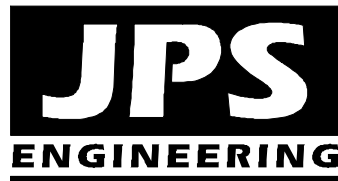
**FINAL DRAINAGE REPORT**  
**for**  
**COLVIN HERITAGE FARMS SUBDIVISION FILING 1**

**Prepared for:**

**Kevin and Michelle Colvin**  
4336 Normandy Court  
Royal Oak, MI 48073

May 8, 2020  
Revised April 12, 2021

**Prepared by:**



**19 E. Willamette Avenue**  
**Colorado Springs, CO 80903**  
**(719)-477-9429**  
**[www.jpsengr.com](http://www.jpsengr.com)**

**JPS Project No. 042002**  
**PCD File No.: MS2010**

**COLVIN HERITAGE FARMS SUBDIVISION FILING 1**  
**FINAL DRAINAGE REPORT**  
**TABLE OF CONTENTS**

	<u>PAGE</u>
DRAINAGE STATEMENT .....	i
I. GENERAL LOCATION AND DESCRIPTION.....	1
II. DRAINAGE BASINS AND SUB-BASINS.....	2
III. DRAINAGE DESIGN CRITERIA .....	3
IV. DRAINAGE PLANNING FOUR STEP PROCESS.....	3
V. GENERAL DRAINAGE RECOMMENDATIONS .....	4
VI. DRAINAGE FACILITY DESIGN .....	5
VII. EROSION / SEDIMENT CONTROL .....	7
VIII. STORMWATER DETENTION AND WATER QUALITY .....	7
IX. COST ESTIMATE AND DRAINAGE FEES.....	8
X. SUMMARY .....	8


**APPENDICES**

APPENDIX A	Soils Information
APPENDIX B	Hydrologic Calculations
APPENDIX C	Hydraulic Calculations
APPENDIX D	Figures
Figure FIRM	Floodplain Map
Sheet EX1	Historic Drainage Plan
Sheet D1	Developed Drainage Plan

## DRAINAGE STATEMENT

### Engineer's Statement:

The attached drainage plan and report were prepared under my direction and supervision and are correct to the best of my knowledge and belief. Said drainage report has been prepared according to the criteria established by the County for drainage reports and said report is in conformity with the master plan of the drainage basin. I accept responsibility for liability caused by negligent acts, errors or omissions on my part in preparing this report.

  
John P. Schwab, P.E. #29891




2/4/21

### Developer's Statement:

I, the developer, have read and will comply with all of the requirements specified in this drainage report and plan.

By:

  
Printed Name: Kevin and Michelle Colvin, Owners  
4336 Normandy Ct., Royal Oak, MI 48073

4 Feb 2021  
Date

### El Paso County's Statement

Filed in accordance with the requirements of the El Paso County Land Development Code, Drainage Criteria Manual, Volumes 1 and 2, and Engineering Criteria Manual as amended.

Jennifer Irvine, P.E.  
County Engineer / ECM Administrator

Date

Conditions:

## **I. GENERAL LOCATION AND DESCRIPTION**

### **A. Background**

Colvin Heritage Farms Subdivision Filing 1 is a proposed 2-lot rural residential minor subdivision located in the Black Forest area of northern El Paso County, Colorado. The minor subdivision will create two residential lots on the existing 19.8-acre parcel (El Paso County Assessor's Number 52150-00-054) located at the northeast corner of Burgess Road and Green Acres Lane. There are no improvements proposed to the existing residence on the north side of the property, which will be platted as Lot 1. The proposed Lot 2 will be developed as a single-family residence, and the site disturbance is anticipated to be limited to less than one acre.

### **B. Scope**

This report will provide a summary of site drainage issues impacting the proposed residential minor subdivision. The report will analyze upstream drainage patterns, site-specific developed drainage patterns, and impacts on downstream facilities. This report is based on the guidelines and criteria presented in the El Paso County Drainage Criteria Manual, and the report is intended to fulfill the requirements for a "Final Drainage Report" in support of the Final Plat process for this property.

### **C. Site Location and Description**

Colvin Heritage Farms Minor Subdivision is located in the Southeast Quarter of Section 15, Township 12 South, Range 65 West of the 6th Principal Meridian. The 19.8-acre parcel is currently a developed rural residential property with an existing ranch residence along with several sheds and accessory structures. The north half of the parcel including the existing residence will be platted as the 10.1-acre Lot 1, and the vacant area in the south half of the parcel will be platted as the 9.7-acre Lot 2. The property is zoned RR-5 (rural residential), allowing for 5-acre minimum lot sizes, and the proposed minor subdivision is fully in conformance with the existing zoning of the site. Access to each of the two lots will be provided by driveway connections to Green Acres Lane, the existing private street along the west boundary of the site.

The site is bordered by developed rural residential properties on all sides. Burgess Road is an improved, asphalt-paved public street along the south boundary of the site, Green Acres Lane is an existing gravel private road along the west boundary of the site. The west and north boundaries of the site adjoin unplatted 20-acre rural residential parcels. The Black Squirrel Creek Park Subdivision (Zoned RR-5), consisting of 5-acre platted residential lots, adjoins the east boundary of the property.

The site is located at the upstream boundary of the Falcon Drainage Basin, and surface drainage from this site sheet flows southeasterly to an existing culvert crossing Burgess Road. The terrain is gently rolling with average grades ranging from 1 to 10 percent. Ground elevations within the site range from approximately 7,482 feet above mean sea level at the northwest corner of the site down to approximately 7,430 at the southern property boundary.

## **D. General Soil Conditions**

According to the Custom Soil Resource Report for this site (see details in Appendix A) provided by the Natural Resources Conservation Service (NRCS), on-site soils are comprised of “Type 40-41: Kettle gravelly loamy sand” and “Type 71: Pring coarse sandy loam.” These soils are classified as hydrologic soils group “B” (moderate infiltration rate).

## **E. References**

City of Colorado Springs & El Paso County “Drainage Criteria Manual,” revised October 31, 2018.

City of Colorado Springs “Drainage Criteria Manual, Volumes 1 and 2,” revised October 31, 2018.

El Paso County “Engineering Criteria Manual,” revised December 13, 2016.

FEMA, Flood Insurance Rate Map (FIRM) Number 08041C0320G and 08041C0535G, December 7, 2018.

Matrix Design Group, “Falcon Drainage Basin Planning Study,” September, 2015.

United Western Engineers, “Drainage Report, Black Squirrel Park,” June 11, 1971.

## **II. DRAINAGE BASINS AND SUB-BASINS**

### **A. Major Basin Description**

The proposed development lies within the Falcon Drainage Basin (CHWS 1400) as classified by El Paso County. Drainage from this site at the upstream boundary of the Falcon Drainage Basin flows to existing natural drainage swales draining southeasterly. There are no Falcon DBPS public drainage improvements planned in vicinity of this property.

### **B. Floodplain Impacts**

This site is not impacted by any FEMA 100-year floodplain limits. The delineated floodplain limits in vicinity of the site are shown in FEMA Flood Insurance Rate Map (FIRM) Numbers 08041C0320G and 08041C0535G, dated December 7, 2018 (see FIRMette exhibit in Appendix C).

### **C. Sub-Basin Description**

The existing drainage basins lying in and around the proposed development are depicted on Figure EX1 (Appendix C). The property has been delineated as two on-site drainage basins, flowing southeasterly to an existing culvert crossing Burgess Road. The majority of the property has been delineated at Basin A, with a narrow area along the easterly boundary delineated as Basin B.

The site is impacted by off-site drainage areas on the north and west sides of the property. Off-site Basins OA1 and OA2 have been delineated as the off-site areas of unplatted rural parcels which sheet flow southeasterly into Basin A. Basin OB1 is a small off-site basin which sheet flows southerly into on-site Basin B.

Developed runoff in this minor subdivision will generally continue to follow historic paths.

### III. DRAINAGE DESIGN CRITERIA

#### A. Development Criteria Reference

The adjoining Black Squirrel Creek Park Subdivision along the east boundary of this site was platted in 1971. United Western Engineers prepared a report entitled “Drainage Report, Black Squirrel Creek Park” dated June 11, 1971, which depicts the adjoining lots as sheet flowing southeasterly to a culvert crossing Burgess Road.

#### B. Hydrologic Criteria

The tributary drainage basins impacting this site are all less than 100 acres, so Rational Method Hydrology procedures were utilized for calculation of peak flows. Rational Method hydrologic calculations were based on the following assumptions:

• Design storm (minor)	5-year	
• Design storm (major)	100-year	
• Rainfall Intensities	El Paso County I-D-F Curve	
• Hydrologic soil type	B	
	<u>C5</u>	<u>C100</u>
• Runoff Coefficients - undeveloped: Meadow / Forest areas	0.08	0.35
• Runoff Coefficients - developed: Proposed Building / Pavement Areas	0.90	0.96
(see composite runoff coefficient calculations in Appendix B)		

Hydrologic calculations are enclosed in Appendix B, and peak design flows are identified on the drainage plan drawings.

### IV. DRAINAGE PLANNING FOUR STEP PROCESS

El Paso County Drainage Criteria require drainage planning to include a Four Step Process for receiving water protection that focuses on reducing runoff volumes, treating the water quality capture volume (WQCV), stabilizing drainageways, and implementing long-term source controls.

As stated in DCM Volume 2, the Four Step Process is applicable to all new and re-development projects with construction activities that disturb 1 acre or greater or that disturb less than 1 acre but are part of a larger common plan of development. The Four Step Process has been implemented as follows in the planning of this project:

Step 1: Employ Runoff Reduction Practices

- Minimize Impacts: The proposed minor rural residential subdivision is an inherently low impact development. The proposed 10-acre nominal lot sizes will significantly minimize drainage impacts in comparison to higher density development alternatives.

Step 2: Stabilize Drainageways

- There are no major drainageways within the site. Substantial vegetated buffer strips will be maintained between developed areas of the site and downstream drainage channels.
- Drainage basin fees will be paid at the time of recording of the subdivision plat, and these fees provide the applicable cost contribution towards regional drainage improvements.

Step 3: Provide Water Quality Capture Volume (WQCV)

- Water quality detention is not required based on the rural residential development proposed (10-acre lot sizes). According to ECM Appendix I Section I.7.1.B.5, a single-family residential lot greater than or equal to 2.5 acres in size per dwelling and having a total lot impervious area of less than 10 percent is excluded from permanent WQ control measures. As detailed in Appendix B, the total assumed impervious area for Lots 1 and 2 is approximately 5.8 percent, which meets the criteria for exclusion from water quality requirements.

Step 4: Consider Need for Industrial and Commercial BMPs

- No industrial or commercial land uses are proposed as part of this development.

## **V. GENERAL DRAINAGE RECOMMENDATIONS**

The developed drainage plan for the site is to provide and maintain positive drainage away from structures and conform to the established drainage patterns for the overall site. JPS Engineering recommends that positive drainage be established and maintained away from all structures within the site in conformance with applicable building codes and geotechnical engineering recommendations.

Individual lot grading is the sole responsibility of the individual builders and property owners. Final grading of each home site should establish proper protective slopes and positive drainage in accordance with HUD guidelines and building codes. In general, main floor elevations for each home should be established a minimum of 2 feet above the top of curb of the adjoining street.

In general, we recommend a minimum of 6 inches clearance from the top of concrete foundation walls to adjacent finished site grades. Positive drainage slopes should be maintained away from

all structures, with a minimum recommended slope of 5 percent for the first 10 feet away from buildings in landscaped areas, a minimum recommended slope of 2 percent for the first 10 feet away from buildings in paved areas, and a minimum slope of 1 percent for paved areas beyond buildings.

## **VI. DRAINAGE FACILITY DESIGN**

### **A. General Concept**

Development of the proposed subdivision replat will not require any public improvements, as access to the two lots will be provided by private access drive connections to the existing Green Acres Lane along the west boundary of the subdivision. The general concept for management of developed storm runoff is to establish site grading to provide positive drainage away from the building pads and divert runoff to drainage swales following historic drainage patterns.

### **B. Specific Details**

#### **1. Existing Drainage Conditions**

Historic drainage conditions are depicted on Figure EX1 (Appendix D). The north side of the proposed subdivision property is currently a developed rural residential property, and the south side of the parcel is a historically vacant forest and meadow area. There are no existing drainage facilities within the property, with the exception of existing culverts crossing Green Acres Lane and Burgess Road. There are no existing irrigation facilities, major utilities, or significant encumbrances impacting the site.

Drainage from off-site Basins OA1 and OA2 sheet flows southeasterly and combines with the on-site flows in Basin A, draining southeasterly to the existing 24-inch CMP culvert crossing Burgess Road at the southern boundary of the site. Historic peak flows at Design Point #1 are calculated as  $Q_5 = 12.8$  cfs and  $Q_{100} = 73.0$  cfs.

Drainage from the small off-site Basin OB1 sheet flows southeasterly and combines with the on-site flows in Basin B, draining southeasterly to the existing natural drainage swale at the east boundary of the site. Historic peak flows at Design Point #2 are calculated as  $Q_5 = 0.6$  cfs and  $Q_{100} = 4.7$  cfs.

#### **2. Developed Drainage Conditions**

The developed drainage basins and projected flows are shown on the Developed Drainage Plan (Figure D1, Appendix D). The two proposed rural residential lots within the developed minor subdivision have been identified as Sub-Basins A1 (Lot 1) and A2 (Lot 2).



Developed flows from Basin A will continue to sheet flow southeasterly to Design Point #1. Flows from Basins OA1, OA2, A1, and A2 will continue to combine at Design Point #1, with developed peak flows calculated as  $Q_5 = 13.9$  cfs and  $Q_{100} = 74.3$  cfs.

The proposed minor subdivision will have no significant drainage impact to Basin B. Drainage from off-site Basin OB1 will continue to combine with Basin B at Design Point #2, with developed flows calculated as  $Q_5 = 0.9$  cfs and  $Q_{100} = 5.0$  cfs.

Recognizing the rural residential nature of the proposed minor subdivision (10-acre lots), the small increase in developed flows will have no significant impact on downstream facilities in the Falcon Drainage Basin.

### C. Comparison of Developed to Historic Discharges

Based on the hydrologic calculations in Appendix B, the comparison of developed to historic discharges at key design points is summarized as follows:

Design Point	Historic Flow			Developed Flow			Comparison of Developed to Historic Flow
	Area (ac)	$Q_5$ (cfs)	$Q_{100}$ (cfs)	Area (ac)	$Q_5$ (cfs)	$Q_{100}$ (cfs)	
1	42.1	12.8	73.0	42.1	13.9	74.3	+1.1 cfs / +1.3 cfs (minimal increase)
2	2.7	0.6	4.7	2.7	0.9	5.0	+0.3 cfs / +0.3 cfs (minimal increase)

With proper site drainage and erosion control measures within the site, the proposed rural residential minor subdivision will not have any significant developed drainage impact.

### D. On-Site Drainage Facility Design

Developed drainage basins and drainage patterns are depicted on the enclosed Developed Drainage Plan (Sheet D1). No public drainage improvements are required for this minor subdivision.

Based on the rural residential nature of this minor subdivision and the large lot sizes proposed, there will be no significant increase in developed flows, and there is no need for on-site flood control detention.

Drainage easements have been delineated along the existing drainage channel (Channel A2) flowing through Lot 2. The proposed 30-foot drainage easement width is consistent with the recommended easement widths in ECM Section 3.3.3K, recognizing that maintenance access is readily available along the existing shallow channel.

Additional drainage easement areas have been delineated along the south boundary of Lot 2 to provide for headwater conditions approaching the existing culvert crossing Burgess Road.

#### **E. Analysis of Existing and Proposed Downstream Facilities**

The proposed subdivision area will drain southeasterly to existing natural drainage swales flowing to the Falcon Drainage Basin. Development of this property as a rural residential subdivision will have no significant impact on downstream drainage facilities.

A culvert analysis for the existing 24-inch CMP culvert crossing Burgess Road is enclosed in Appendix C, and while the existing culvert would be expected to overtop the roadway during 100-year storm events, the proposed minor subdivision has no significant impact on the existing culvert capacity.

There is no evidence of erosive conditions at the outfall point, and the existing downstream grass-lined drainage channel provides a hydrologically and hydraulically adequate drainage outfall system.

#### **F. Anticipated Drainage Problems and Solutions**

The drainage plan for this minor subdivision consists of maintaining positive drainage away from home sites, and conveying surface drainage through the site in general conformance with historic drainage patterns. The primary drainage problems anticipated within this type of development consist of maintenance of proper drainage patterns and erosion control.

Care will need to be taken to implement proper erosion control measures associated with the proposed driveways, home sites, and drainage swales. Proposed drainage facilities outside the public right-of-way will be owned and maintained by the individual lot owners unless otherwise noted.

### **VII. EROSION CONTROL / SEDIMENT CONTROL**

Contractors and Owners will need to implement and maintain proper Best Management Practices (BMP's) and control measures for erosion and sediment control during and after construction. Erosion control measures should include installation of silt fence at the toe of disturbed areas, sediment control logs protecting drainage ditches, vehicle tracking control pads at access points, riprap protection at culvert outlets, and revegetation of disturbed areas. Cut slopes will need to be stabilized during excavation as necessary and vegetation will need to be re-established as soon as possible for stabilization of graded areas.

### **VIII. STORMWATER DETENTION AND WATER QUALITY**

As previously stated, the proposed development will result in a minimal increase in developed flows based on the rural residential development plan. There is no need for on-site stormwater detention based on the minimal developed drainage impact.

Water quality facilities are not required as this site meets exclusions listed in the revised El Paso County Engineering Criteria Manual (ECM). Section I.7.1.B.5 of the ECM identifies “Large Lot Single Family Sites” as excluded sites under the following definition: “A single-family residential lot, or agricultural zoned lands, greater than or equal to 2.5 acres in size per dwelling and having a total lot impervious area of less than 10 percent.” The proposed subdivision plat will create two lots, but Lot 1 is an existing rural residential property, so the drainage impact of this minor subdivision is to create a single new rural residential lot (Lot 2), with a size of 9.67-acres. The estimated new impervious area (Basin A) has been calculated as approximately 5.8 percent, which is well below the “10 percent” threshold.

## **IX. COST ESTIMATE AND DRAINAGE FEES**

The developer will finance all costs for required subdivision improvements, and there are no public facilities proposed as part of this minor subdivision plat.

The property is located entirely within the Falcon Drainage Basin (CHWS 1400), which has a 2021 drainage basin fee of \$31,885 per impervious acre and a bridge fee of \$4,380 per impervious acre. Applicable drainage basin fees are calculated as follows:

Minor Subdivision Area = 19.8 acres  
Newly developed residential area (Proposed Lot 2 only) = 9.67 acres  
Percent impervious = 5.17% (see calculation in Appendix B)  
Estimated Impervious area = 0.50 ac.  
Adjusted Impervious area =  $(0.50 \text{ ac}) * 75\% = 0.375 \text{ ac.}$   
(includes 25% reduction on drainage fees for 2.5 to 5-acre lots per ECM  
Appendix L Section 3.10.2a)  
Drainage Basin Fee =  $(0.375 \text{ ac.}) @ \$31,885/\text{ac.} = \underline{\$11,956.88}$   
  
Bridge Fee =  $(0.375 \text{ ac.}) @ \$4,380/\text{ac.} = \underline{\$1,642.50}$

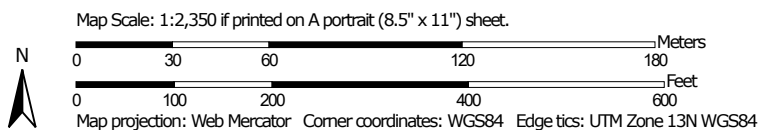
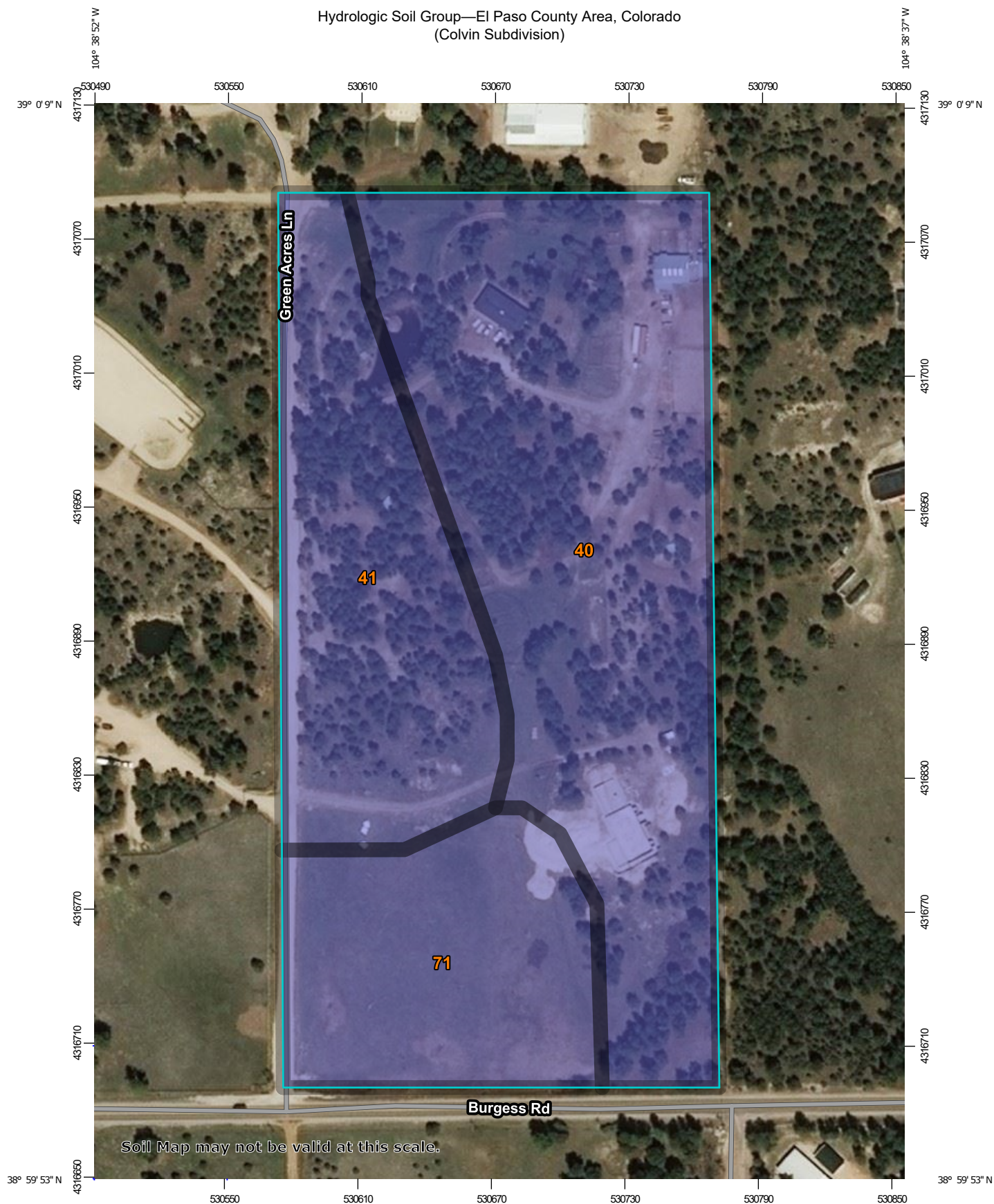
## **X. SUMMARY**

Colvin Heritage Farms Subdivision Filing 1 is a proposed rural residential subdivision consisting of 2 lots on a 19.8-acre site. Development of the proposed subdivision is anticipated to result in a negligible increase in developed runoff from the site, and erosion control best management practices will be implemented to mitigate developed drainage impacts. The proposed drainage patterns will remain consistent with historic conditions. Implementation and maintenance of proper erosion control measures will ensure that this minor subdivision has no significant adverse drainage impact on downstream properties or drainage facilities.

**APPENDIX A**

**SOILS INFORMATION**

# Hydrologic Soil Group—El Paso County Area, Colorado (Colvin Subdivision)



MAP LEGEND

**Area of Interest (AOI)**

Area of Interest (AOI)

**Soils**

**Soil Rating Polygons**

A

A/D

B

B/D

C

C/D

D

Not rated or not available

**Water Features**

Streams and Canals

**Transportation**

Rails

Interstate Highways

US Routes

Major Roads

Local Roads

**Background**

Aerial Photography

**Soil Rating Lines**

A

A/D

B

B/D

C

C/D

D

Not rated or not available

**Soil Rating Points**

A

A/D

B

B/D

C

C/D

D

Not rated or not available

MAP INFORMATION

The soil surveys that comprise your AOI were mapped at 1:24,000.

Warning: Soil Map may not be valid at this scale.

Enlargement of maps beyond the scale of mapping can cause misunderstanding of the detail of mapping and accuracy of soil line placement. The maps do not show the small areas of contrasting soils that could have been shown at a more detailed scale.

Please rely on the bar scale on each map sheet for map measurements.

Source of Map: Natural Resources Conservation Service  
Web Soil Survey URL:  
Coordinate System: Web Mercator (EPSG:3857)

Maps from the Web Soil Survey are based on the Web Mercator projection, which preserves direction and shape but distorts distance and area. A projection that preserves area, such as the Albers equal-area conic projection, should be used if more accurate calculations of distance or area are required.

This product is generated from the USDA-NRCS certified data as of the version date(s) listed below.

Soil Survey Area: El Paso County Area, Colorado  
Survey Area Data: Version 17, Sep 13, 2019

Soil map units are labeled (as space allows) for map scales 1:50,000 or larger.

Date(s) aerial images were photographed: Sep 8, 2018—May 26, 2019

The orthophoto or other base map on which the soil lines were compiled and digitized probably differs from the background imagery displayed on these maps. As a result, some minor shifting of map unit boundaries may be evident.

## Hydrologic Soil Group

Map unit symbol	Map unit name	Rating	Acres in AOI	Percent of AOI
40	Kettle gravelly loamy sand, 3 to 8 percent slopes	B	10.3	53.0%
41	Kettle gravelly loamy sand, 8 to 40 percent slopes	B	5.2	26.8%
71	Pring coarse sandy loam, 3 to 8 percent slopes	B	3.9	20.3%
<b>Totals for Area of Interest</b>			<b>19.4</b>	<b>100.0%</b>

## Description

Hydrologic soil groups are based on estimates of runoff potential. Soils are assigned to one of four groups according to the rate of water infiltration when the soils are not protected by vegetation, are thoroughly wet, and receive precipitation from long-duration storms.

The soils in the United States are assigned to four groups (A, B, C, and D) and three dual classes (A/D, B/D, and C/D). The groups are defined as follows:

Group A. Soils having a high infiltration rate (low runoff potential) when thoroughly wet. These consist mainly of deep, well drained to excessively drained sands or gravelly sands. These soils have a high rate of water transmission.

Group B. Soils having a moderate infiltration rate when thoroughly wet. These consist chiefly of moderately deep or deep, moderately well drained or well drained soils that have moderately fine texture to moderately coarse texture. These soils have a moderate rate of water transmission.

Group C. Soils having a slow infiltration rate when thoroughly wet. These consist chiefly of soils having a layer that impedes the downward movement of water or soils of moderately fine texture or fine texture. These soils have a slow rate of water transmission.

Group D. Soils having a very slow infiltration rate (high runoff potential) when thoroughly wet. These consist chiefly of clays that have a high shrink-swell potential, soils that have a high water table, soils that have a claypan or clay layer at or near the surface, and soils that are shallow over nearly impervious material. These soils have a very slow rate of water transmission.

If a soil is assigned to a dual hydrologic group (A/D, B/D, or C/D), the first letter is for drained areas and the second is for undrained areas. Only the soils that in their natural condition are in group D are assigned to dual classes.

## Rating Options

*Aggregation Method:* Dominant Condition

*Component Percent Cutoff:* None Specified

*Tie-break Rule:* Higher





United States  
Department of  
Agriculture

NRCS

Natural  
Resources  
Conservation  
Service

A product of the National  
Cooperative Soil Survey,  
a joint effort of the United  
States Department of  
Agriculture and other  
Federal agencies, State  
agencies including the  
Agricultural Experiment  
Stations, and local  
participants

# Custom Soil Resource Report for El Paso County Area, Colorado



May 5, 2020

# Preface

---

Soil surveys contain information that affects land use planning in survey areas. They highlight soil limitations that affect various land uses and provide information about the properties of the soils in the survey areas. Soil surveys are designed for many different users, including farmers, ranchers, foresters, agronomists, urban planners, community officials, engineers, developers, builders, and home buyers. Also, conservationists, teachers, students, and specialists in recreation, waste disposal, and pollution control can use the surveys to help them understand, protect, or enhance the environment.

Various land use regulations of Federal, State, and local governments may impose special restrictions on land use or land treatment. Soil surveys identify soil properties that are used in making various land use or land treatment decisions. The information is intended to help the land users identify and reduce the effects of soil limitations on various land uses. The landowner or user is responsible for identifying and complying with existing laws and regulations.

Although soil survey information can be used for general farm, local, and wider area planning, onsite investigation is needed to supplement this information in some cases. Examples include soil quality assessments (<http://www.nrcs.usda.gov/wps/portal/nrcs/main/soils/health/>) and certain conservation and engineering applications. For more detailed information, contact your local USDA Service Center (<https://offices.sc.egov.usda.gov/locator/app?agency=nrcs>) or your NRCS State Soil Scientist ([http://www.nrcs.usda.gov/wps/portal/nrcs/detail/soils/contactus/?cid=nrcs142p2\\_053951](http://www.nrcs.usda.gov/wps/portal/nrcs/detail/soils/contactus/?cid=nrcs142p2_053951)).

Great differences in soil properties can occur within short distances. Some soils are seasonally wet or subject to flooding. Some are too unstable to be used as a foundation for buildings or roads. Clayey or wet soils are poorly suited to use as septic tank absorption fields. A high water table makes a soil poorly suited to basements or underground installations.

The National Cooperative Soil Survey is a joint effort of the United States Department of Agriculture and other Federal agencies, State agencies including the Agricultural Experiment Stations, and local agencies. The Natural Resources Conservation Service (NRCS) has leadership for the Federal part of the National Cooperative Soil Survey.

Information about soils is updated periodically. Updated information is available through the NRCS Web Soil Survey, the site for official soil survey information.

The U.S. Department of Agriculture (USDA) prohibits discrimination in all its programs and activities on the basis of race, color, national origin, age, disability, and where applicable, sex, marital status, familial status, parental status, religion, sexual orientation, genetic information, political beliefs, reprisal, or because all or a part of an individual's income is derived from any public assistance program. (Not all prohibited bases apply to all programs.) Persons with disabilities who require

alternative means for communication of program information (Braille, large print, audiotape, etc.) should contact USDA's TARGET Center at (202) 720-2600 (voice and TDD). To file a complaint of discrimination, write to USDA, Director, Office of Civil Rights, 1400 Independence Avenue, S.W., Washington, D.C. 20250-9410 or call (800) 795-3272 (voice) or (202) 720-6382 (TDD). USDA is an equal opportunity provider and employer.

# Contents

---

<b>Preface</b> .....	2
<b>How Soil Surveys Are Made</b> .....	5
<b>Soil Map</b> .....	8
Soil Map.....	9
Legend.....	10
Map Unit Legend.....	11
Map Unit Descriptions.....	11
El Paso County Area, Colorado.....	13
40—Kettle gravelly loamy sand, 3 to 8 percent slopes.....	13
41—Kettle gravelly loamy sand, 8 to 40 percent slopes.....	14
71—Pring coarse sandy loam, 3 to 8 percent slopes.....	15
<b>References</b> .....	17

# How Soil Surveys Are Made

---

Soil surveys are made to provide information about the soils and miscellaneous areas in a specific area. They include a description of the soils and miscellaneous areas and their location on the landscape and tables that show soil properties and limitations affecting various uses. Soil scientists observed the steepness, length, and shape of the slopes; the general pattern of drainage; the kinds of crops and native plants; and the kinds of bedrock. They observed and described many soil profiles. A soil profile is the sequence of natural layers, or horizons, in a soil. The profile extends from the surface down into the unconsolidated material in which the soil formed or from the surface down to bedrock. The unconsolidated material is devoid of roots and other living organisms and has not been changed by other biological activity.

Currently, soils are mapped according to the boundaries of major land resource areas (MLRAs). MLRAs are geographically associated land resource units that share common characteristics related to physiography, geology, climate, water resources, soils, biological resources, and land uses (USDA, 2006). Soil survey areas typically consist of parts of one or more MLRA.

The soils and miscellaneous areas in a survey area occur in an orderly pattern that is related to the geology, landforms, relief, climate, and natural vegetation of the area. Each kind of soil and miscellaneous area is associated with a particular kind of landform or with a segment of the landform. By observing the soils and miscellaneous areas in the survey area and relating their position to specific segments of the landform, a soil scientist develops a concept, or model, of how they were formed. Thus, during mapping, this model enables the soil scientist to predict with a considerable degree of accuracy the kind of soil or miscellaneous area at a specific location on the landscape.

Commonly, individual soils on the landscape merge into one another as their characteristics gradually change. To construct an accurate soil map, however, soil scientists must determine the boundaries between the soils. They can observe only a limited number of soil profiles. Nevertheless, these observations, supplemented by an understanding of the soil-vegetation-landscape relationship, are sufficient to verify predictions of the kinds of soil in an area and to determine the boundaries.

Soil scientists recorded the characteristics of the soil profiles that they studied. They noted soil color, texture, size and shape of soil aggregates, kind and amount of rock fragments, distribution of plant roots, reaction, and other features that enable them to identify soils. After describing the soils in the survey area and determining their properties, the soil scientists assigned the soils to taxonomic classes (units). Taxonomic classes are concepts. Each taxonomic class has a set of soil characteristics with precisely defined limits. The classes are used as a basis for comparison to classify soils systematically. Soil taxonomy, the system of taxonomic classification used in the United States, is based mainly on the kind and character of soil properties and the arrangement of horizons within the profile. After the soil

scientists classified and named the soils in the survey area, they compared the individual soils with similar soils in the same taxonomic class in other areas so that they could confirm data and assemble additional data based on experience and research.

The objective of soil mapping is not to delineate pure map unit components; the objective is to separate the landscape into landforms or landform segments that have similar use and management requirements. Each map unit is defined by a unique combination of soil components and/or miscellaneous areas in predictable proportions. Some components may be highly contrasting to the other components of the map unit. The presence of minor components in a map unit in no way diminishes the usefulness or accuracy of the data. The delineation of such landforms and landform segments on the map provides sufficient information for the development of resource plans. If intensive use of small areas is planned, onsite investigation is needed to define and locate the soils and miscellaneous areas.

Soil scientists make many field observations in the process of producing a soil map. The frequency of observation is dependent upon several factors, including scale of mapping, intensity of mapping, design of map units, complexity of the landscape, and experience of the soil scientist. Observations are made to test and refine the soil-landscape model and predictions and to verify the classification of the soils at specific locations. Once the soil-landscape model is refined, a significantly smaller number of measurements of individual soil properties are made and recorded. These measurements may include field measurements, such as those for color, depth to bedrock, and texture, and laboratory measurements, such as those for content of sand, silt, clay, salt, and other components. Properties of each soil typically vary from one point to another across the landscape.

Observations for map unit components are aggregated to develop ranges of characteristics for the components. The aggregated values are presented. Direct measurements do not exist for every property presented for every map unit component. Values for some properties are estimated from combinations of other properties.

While a soil survey is in progress, samples of some of the soils in the area generally are collected for laboratory analyses and for engineering tests. Soil scientists interpret the data from these analyses and tests as well as the field-observed characteristics and the soil properties to determine the expected behavior of the soils under different uses. Interpretations for all of the soils are field tested through observation of the soils in different uses and under different levels of management. Some interpretations are modified to fit local conditions, and some new interpretations are developed to meet local needs. Data are assembled from other sources, such as research information, production records, and field experience of specialists. For example, data on crop yields under defined levels of management are assembled from farm records and from field or plot experiments on the same kinds of soil.

Predictions about soil behavior are based not only on soil properties but also on such variables as climate and biological activity. Soil conditions are predictable over long periods of time, but they are not predictable from year to year. For example, soil scientists can predict with a fairly high degree of accuracy that a given soil will have a high water table within certain depths in most years, but they cannot predict that a high water table will always be at a specific level in the soil on a specific date.

After soil scientists located and identified the significant natural bodies of soil in the survey area, they drew the boundaries of these bodies on aerial photographs and

## Custom Soil Resource Report

identified each as a specific map unit. Aerial photographs show trees, buildings, fields, roads, and rivers, all of which help in locating boundaries accurately.

# Soil Map

---

The soil map section includes the soil map for the defined area of interest, a list of soil map units on the map and extent of each map unit, and cartographic symbols displayed on the map. Also presented are various metadata about data used to produce the map, and a description of each soil map unit.



# Custom Soil Resource Report Soil Map



MAP LEGEND

**Area of Interest (AOI)**

Area of Interest (AOI)

**Soils**

Soil Map Unit Polygons

Soil Map Unit Lines

Soil Map Unit Points

**Special Point Features**

Blowout

Borrow Pit

Clay Spot

Closed Depression

Gravel Pit

Gravelly Spot

Landfill

Lava Flow

Marsh or swamp

Mine or Quarry

Miscellaneous Water

Perennial Water

Rock Outcrop

Saline Spot

Sandy Spot

Severely Eroded Spot

Sinkhole

Slide or Slip

Sodic Spot

Spoil Area

Stony Spot

Very Stony Spot

Wet Spot

Other

Special Line Features

**Water Features**

Streams and Canals

**Transportation**

Rails

Interstate Highways

US Routes

Major Roads

Local Roads

**Background**

Aerial Photography

MAP INFORMATION

The soil surveys that comprise your AOI were mapped at 1:24,000.

Warning: Soil Map may not be valid at this scale.

Enlargement of maps beyond the scale of mapping can cause misunderstanding of the detail of mapping and accuracy of soil line placement. The maps do not show the small areas of contrasting soils that could have been shown at a more detailed scale.

Please rely on the bar scale on each map sheet for map measurements.

Source of Map: Natural Resources Conservation Service  
Web Soil Survey URL:  
Coordinate System: Web Mercator (EPSG:3857)

Maps from the Web Soil Survey are based on the Web Mercator projection, which preserves direction and shape but distorts distance and area. A projection that preserves area, such as the Albers equal-area conic projection, should be used if more accurate calculations of distance or area are required.

This product is generated from the USDA-NRCS certified data as of the version date(s) listed below.

Soil Survey Area: El Paso County Area, Colorado  
Survey Area Data: Version 17, Sep 13, 2019

Soil map units are labeled (as space allows) for map scales 1:50,000 or larger.

Date(s) aerial images were photographed: Sep 8, 2018—May 26, 2019

The orthophoto or other base map on which the soil lines were compiled and digitized probably differs from the background imagery displayed on these maps. As a result, some minor shifting of map unit boundaries may be evident.

## Map Unit Legend

Map Unit Symbol	Map Unit Name	Acres in AOI	Percent of AOI
40	Kettle gravelly loamy sand, 3 to 8 percent slopes	10.3	53.0%
41	Kettle gravelly loamy sand, 8 to 40 percent slopes	5.2	26.8%
71	Pring coarse sandy loam, 3 to 8 percent slopes	3.9	20.3%
<b>Totals for Area of Interest</b>		<b>19.4</b>	<b>100.0%</b>

## Map Unit Descriptions

The map units delineated on the detailed soil maps in a soil survey represent the soils or miscellaneous areas in the survey area. The map unit descriptions, along with the maps, can be used to determine the composition and properties of a unit.

A map unit delineation on a soil map represents an area dominated by one or more major kinds of soil or miscellaneous areas. A map unit is identified and named according to the taxonomic classification of the dominant soils. Within a taxonomic class there are precisely defined limits for the properties of the soils. On the landscape, however, the soils are natural phenomena, and they have the characteristic variability of all natural phenomena. Thus, the range of some observed properties may extend beyond the limits defined for a taxonomic class. Areas of soils of a single taxonomic class rarely, if ever, can be mapped without including areas of other taxonomic classes. Consequently, every map unit is made up of the soils or miscellaneous areas for which it is named and some minor components that belong to taxonomic classes other than those of the major soils.

Most minor soils have properties similar to those of the dominant soil or soils in the map unit, and thus they do not affect use and management. These are called noncontrasting, or similar, components. They may or may not be mentioned in a particular map unit description. Other minor components, however, have properties and behavioral characteristics divergent enough to affect use or to require different management. These are called contrasting, or dissimilar, components. They generally are in small areas and could not be mapped separately because of the scale used. Some small areas of strongly contrasting soils or miscellaneous areas are identified by a special symbol on the maps. If included in the database for a given area, the contrasting minor components are identified in the map unit descriptions along with some characteristics of each. A few areas of minor components may not have been observed, and consequently they are not mentioned in the descriptions, especially where the pattern was so complex that it was impractical to make enough observations to identify all the soils and miscellaneous areas on the landscape.

The presence of minor components in a map unit in no way diminishes the usefulness or accuracy of the data. The objective of mapping is not to delineate pure taxonomic classes but rather to separate the landscape into landforms or

landform segments that have similar use and management requirements. The delineation of such segments on the map provides sufficient information for the development of resource plans. If intensive use of small areas is planned, however, onsite investigation is needed to define and locate the soils and miscellaneous areas.

An identifying symbol precedes the map unit name in the map unit descriptions. Each description includes general facts about the unit and gives important soil properties and qualities.

Soils that have profiles that are almost alike make up a *soil series*. Except for differences in texture of the surface layer, all the soils of a series have major horizons that are similar in composition, thickness, and arrangement.

Soils of one series can differ in texture of the surface layer, slope, stoniness, salinity, degree of erosion, and other characteristics that affect their use. On the basis of such differences, a soil series is divided into *soil phases*. Most of the areas shown on the detailed soil maps are phases of soil series. The name of a soil phase commonly indicates a feature that affects use or management. For example, Alpha silt loam, 0 to 2 percent slopes, is a phase of the Alpha series.

Some map units are made up of two or more major soils or miscellaneous areas. These map units are complexes, associations, or undifferentiated groups.

A *complex* consists of two or more soils or miscellaneous areas in such an intricate pattern or in such small areas that they cannot be shown separately on the maps. The pattern and proportion of the soils or miscellaneous areas are somewhat similar in all areas. Alpha-Beta complex, 0 to 6 percent slopes, is an example.

An *association* is made up of two or more geographically associated soils or miscellaneous areas that are shown as one unit on the maps. Because of present or anticipated uses of the map units in the survey area, it was not considered practical or necessary to map the soils or miscellaneous areas separately. The pattern and relative proportion of the soils or miscellaneous areas are somewhat similar. Alpha-Beta association, 0 to 2 percent slopes, is an example.

An *undifferentiated group* is made up of two or more soils or miscellaneous areas that could be mapped individually but are mapped as one unit because similar interpretations can be made for use and management. The pattern and proportion of the soils or miscellaneous areas in a mapped area are not uniform. An area can be made up of only one of the major soils or miscellaneous areas, or it can be made up of all of them. Alpha and Beta soils, 0 to 2 percent slopes, is an example.

Some surveys include *miscellaneous areas*. Such areas have little or no soil material and support little or no vegetation. Rock outcrop is an example.

## El Paso County Area, Colorado

### 40—Kettle gravelly loamy sand, 3 to 8 percent slopes

#### Map Unit Setting

*National map unit symbol:* 368g

*Elevation:* 7,000 to 7,700 feet

*Farmland classification:* Not prime farmland

#### Map Unit Composition

*Kettle and similar soils:* 85 percent

*Estimates are based on observations, descriptions, and transects of the mapunit.*

#### Description of Kettle

##### Setting

*Landform:* Hills

*Landform position (three-dimensional):* Side slope

*Down-slope shape:* Linear

*Across-slope shape:* Linear

*Parent material:* Sandy alluvium derived from arkose

##### Typical profile

*E - 0 to 16 inches:* gravelly loamy sand

*Bt - 16 to 40 inches:* gravelly sandy loam

*C - 40 to 60 inches:* extremely gravelly loamy sand

##### Properties and qualities

*Slope:* 3 to 8 percent

*Depth to restrictive feature:* More than 80 inches

*Natural drainage class:* Somewhat excessively drained

*Runoff class:* Low

*Capacity of the most limiting layer to transmit water (Ksat):* High (2.00 to 6.00 in/hr)

*Depth to water table:* More than 80 inches

*Frequency of flooding:* None

*Frequency of ponding:* None

*Available water storage in profile:* Low (about 3.4 inches)

##### Interpretive groups

*Land capability classification (irrigated):* None specified

*Land capability classification (nonirrigated):* 4e

*Hydrologic Soil Group:* B

*Hydric soil rating:* No

#### Minor Components

##### Pleasant

*Percent of map unit:*

*Landform:* Depressions

*Hydric soil rating:* Yes

##### Other soils

*Percent of map unit:*

*Hydric soil rating:* No

## **41—Kettle gravelly loamy sand, 8 to 40 percent slopes**

### **Map Unit Setting**

*National map unit symbol:* 368h

*Elevation:* 7,000 to 7,700 feet

*Farmland classification:* Not prime farmland

### **Map Unit Composition**

*Kettle and similar soils:* 85 percent

*Estimates are based on observations, descriptions, and transects of the mapunit.*

### **Description of Kettle**

#### **Setting**

*Landform:* Hills

*Landform position (three-dimensional):* Side slope

*Down-slope shape:* Linear

*Across-slope shape:* Linear

*Parent material:* Sandy alluvium derived from arkose

#### **Typical profile**

*E - 0 to 16 inches:* gravelly loamy sand

*Bt - 16 to 40 inches:* gravelly sandy loam

*C - 40 to 60 inches:* extremely gravelly loamy sand

#### **Properties and qualities**

*Slope:* 8 to 40 percent

*Depth to restrictive feature:* More than 80 inches

*Natural drainage class:* Somewhat excessively drained

*Runoff class:* Medium

*Capacity of the most limiting layer to transmit water (Ksat):* High (2.00 to 6.00 in/hr)

*Depth to water table:* More than 80 inches

*Frequency of flooding:* None

*Frequency of ponding:* None

*Available water storage in profile:* Low (about 3.4 inches)

#### **Interpretive groups**

*Land capability classification (irrigated):* None specified

*Land capability classification (nonirrigated):* 7e

*Hydrologic Soil Group:* B

*Hydric soil rating:* No

### **Minor Components**

#### **Other soils**

*Percent of map unit:*

*Hydric soil rating:* No

#### **Pleasant**

*Percent of map unit:*

## Custom Soil Resource Report

*Landform:* Depressions  
*Hydric soil rating:* Yes

### 71—Pring coarse sandy loam, 3 to 8 percent slopes

#### Map Unit Setting

*National map unit symbol:* 369k  
*Elevation:* 6,800 to 7,600 feet  
*Farmland classification:* Not prime farmland

#### Map Unit Composition

*Pring and similar soils:* 85 percent  
*Estimates are based on observations, descriptions, and transects of the mapunit.*

#### Description of Pring

##### Setting

*Landform:* Hills  
*Landform position (three-dimensional):* Side slope  
*Down-slope shape:* Linear  
*Across-slope shape:* Linear  
*Parent material:* Arkosic alluvium derived from sedimentary rock

##### Typical profile

*A - 0 to 14 inches:* coarse sandy loam  
*C - 14 to 60 inches:* gravelly sandy loam

##### Properties and qualities

*Slope:* 3 to 8 percent  
*Depth to restrictive feature:* More than 80 inches  
*Natural drainage class:* Well drained  
*Runoff class:* Low  
*Capacity of the most limiting layer to transmit water (Ksat):* High (2.00 to 6.00 in/hr)  
*Depth to water table:* More than 80 inches  
*Frequency of flooding:* None  
*Frequency of ponding:* None  
*Available water storage in profile:* Low (about 6.0 inches)

##### Interpretive groups

*Land capability classification (irrigated):* None specified  
*Land capability classification (nonirrigated):* 3e  
*Hydrologic Soil Group:* B  
*Ecological site:* Loamy Park (R048AY222CO)  
*Hydric soil rating:* No

#### Minor Components

##### Pleasant

*Percent of map unit:*  
*Landform:* Depressions

## Custom Soil Resource Report

*Hydric soil rating: Yes*

### **Other soils**

*Percent of map unit:*

*Hydric soil rating: No*



# References

---

- American Association of State Highway and Transportation Officials (AASHTO). 2004. Standard specifications for transportation materials and methods of sampling and testing. 24th edition.
- American Society for Testing and Materials (ASTM). 2005. Standard classification of soils for engineering purposes. ASTM Standard D2487-00.
- Cowardin, L.M., V. Carter, F.C. Golet, and E.T. LaRoe. 1979. Classification of wetlands and deep-water habitats of the United States. U.S. Fish and Wildlife Service FWS/OBS-79/31.
- Federal Register. July 13, 1994. Changes in hydric soils of the United States.
- Federal Register. September 18, 2002. Hydric soils of the United States.
- Hurt, G.W., and L.M. Vasilas, editors. Version 6.0, 2006. Field indicators of hydric soils in the United States.
- National Research Council. 1995. Wetlands: Characteristics and boundaries.
- Soil Survey Division Staff. 1993. Soil survey manual. Soil Conservation Service. U.S. Department of Agriculture Handbook 18. [http://www.nrcs.usda.gov/wps/portal/nrcs/detail/national/soils/?cid=nrcs142p2\\_054262](http://www.nrcs.usda.gov/wps/portal/nrcs/detail/national/soils/?cid=nrcs142p2_054262)
- Soil Survey Staff. 1999. Soil taxonomy: A basic system of soil classification for making and interpreting soil surveys. 2nd edition. Natural Resources Conservation Service, U.S. Department of Agriculture Handbook 436. [http://www.nrcs.usda.gov/wps/portal/nrcs/detail/national/soils/?cid=nrcs142p2\\_053577](http://www.nrcs.usda.gov/wps/portal/nrcs/detail/national/soils/?cid=nrcs142p2_053577)
- Soil Survey Staff. 2010. Keys to soil taxonomy. 11th edition. U.S. Department of Agriculture, Natural Resources Conservation Service. [http://www.nrcs.usda.gov/wps/portal/nrcs/detail/national/soils/?cid=nrcs142p2\\_053580](http://www.nrcs.usda.gov/wps/portal/nrcs/detail/national/soils/?cid=nrcs142p2_053580)
- Tiner, R.W., Jr. 1985. Wetlands of Delaware. U.S. Fish and Wildlife Service and Delaware Department of Natural Resources and Environmental Control, Wetlands Section.
- United States Army Corps of Engineers, Environmental Laboratory. 1987. Corps of Engineers wetlands delineation manual. Waterways Experiment Station Technical Report Y-87-1.
- United States Department of Agriculture, Natural Resources Conservation Service. National forestry manual. [http://www.nrcs.usda.gov/wps/portal/nrcs/detail/soils/home/?cid=nrcs142p2\\_053374](http://www.nrcs.usda.gov/wps/portal/nrcs/detail/soils/home/?cid=nrcs142p2_053374)
- United States Department of Agriculture, Natural Resources Conservation Service. National range and pasture handbook. <http://www.nrcs.usda.gov/wps/portal/nrcs/detail/national/landuse/rangepasture/?cid=stelprdb1043084>

## Custom Soil Resource Report

United States Department of Agriculture, Natural Resources Conservation Service. National soil survey handbook, title 430-VI. [http://www.nrcs.usda.gov/wps/portal/nrcs/detail/soils/scientists/?cid=nrcs142p2\\_054242](http://www.nrcs.usda.gov/wps/portal/nrcs/detail/soils/scientists/?cid=nrcs142p2_054242)

United States Department of Agriculture, Natural Resources Conservation Service. 2006. Land resource regions and major land resource areas of the United States, the Caribbean, and the Pacific Basin. U.S. Department of Agriculture Handbook 296. [http://www.nrcs.usda.gov/wps/portal/nrcs/detail/national/soils/?cid=nrcs142p2\\_053624](http://www.nrcs.usda.gov/wps/portal/nrcs/detail/national/soils/?cid=nrcs142p2_053624)

United States Department of Agriculture, Soil Conservation Service. 1961. Land capability classification. U.S. Department of Agriculture Handbook 210. [http://www.nrcs.usda.gov/Internet/FSE\\_DOCUMENTS/nrcs142p2\\_052290.pdf](http://www.nrcs.usda.gov/Internet/FSE_DOCUMENTS/nrcs142p2_052290.pdf)

**APPENDIX B**

**HYDROLOGIC CALCULATIONS**

**Table 6-6. Runoff Coefficients for Rational Method**  
(Source: UDFCD 2001)

Land Use or Surface Characteristics	Percent Impervious	Runoff Coefficients											
		2-year		5-year		10-year		25-year		50-year		100-year	
		HSG A&B	HSG C&D	HSG A&B	HSG C&D	HSG A&B	HSG C&D	HSG A&B	HSG C&D	HSG A&B	HSG C&D	HSG A&B	HSG C&D
Business													
Commercial Areas	95	0.79	0.80	0.81	0.82	0.83	0.84	0.85	0.87	0.87	0.88	0.88	0.89
Neighborhood Areas	70	0.45	0.49	0.49	0.53	0.53	0.57	0.58	0.62	0.60	0.65	0.62	0.68
Residential													
1/8 Acre or less	65	0.41	0.45	0.45	0.49	0.49	0.54	0.54	0.59	0.57	0.62	0.59	0.65
1/4 Acre	40	0.23	0.28	0.30	0.35	0.36	0.42	0.42	0.50	0.46	0.54	0.50	0.58
1/3 Acre	30	0.18	0.22	0.25	0.30	0.32	0.38	0.39	0.47	0.43	0.52	0.47	0.57
1/2 Acre	25	0.15	0.20	0.22	0.28	0.30	0.36	0.37	0.46	0.41	0.51	0.46	0.56
1 Acre	20	0.12	0.17	0.20	0.26	0.27	0.34	0.35	0.44	0.40	0.50	0.44	0.55
Industrial													
Light Areas	80	0.57	0.60	0.59	0.63	0.63	0.66	0.66	0.70	0.68	0.72	0.70	0.74
Heavy Areas	90	0.71	0.73	0.73	0.75	0.75	0.77	0.78	0.80	0.80	0.82	0.81	0.83
Parks and Cemeteries	7	0.05	0.09	0.12	0.19	0.20	0.29	0.30	0.40	0.34	0.46	0.39	0.52
Playgrounds	13	0.07	0.13	0.16	0.23	0.24	0.31	0.32	0.42	0.37	0.48	0.41	0.54
Railroad Yard Areas	40	0.23	0.28	0.30	0.35	0.36	0.42	0.42	0.50	0.46	0.54	0.50	0.58
Undeveloped Areas													
Historic Flow Analysis-- Greenbelts, Agriculture	2	0.03	0.05	0.09	0.16	0.17	0.26	0.26	0.38	0.31	0.45	0.36	0.51
Pasture/Meadow	0	0.02	0.04	0.08	0.15	0.15	0.25	0.25	0.37	0.30	0.44	0.35	0.50
Forest	0	0.02	0.04	0.08	0.15	0.15	0.25	0.25	0.37	0.30	0.44	0.35	0.50
Exposed Rock	100	0.89	0.89	0.90	0.90	0.92	0.92	0.94	0.94	0.95	0.95	0.96	0.96
Offsite Flow Analysis (when landuse is undefined)	45	0.26	0.31	0.32	0.37	0.38	0.44	0.44	0.51	0.48	0.55	0.51	0.59
Streets													
Paved	100	0.89	0.89	0.90	0.90	0.92	0.92	0.94	0.94	0.95	0.95	0.96	0.96
Gravel	80	0.57	0.60	0.59	0.63	0.63	0.66	0.66	0.70	0.68	0.72	0.70	0.74
Drive and Walks	100	0.89	0.89	0.90	0.90	0.92	0.92	0.94	0.94	0.95	0.95	0.96	0.96
Roofs	90	0.71	0.73	0.73	0.75	0.75	0.77	0.78	0.80	0.80	0.82	0.81	0.83
Lawns	0	0.02	0.04	0.08	0.15	0.15	0.25	0.25	0.37	0.30	0.44	0.35	0.50

### 3.2 Time of Concentration

One of the basic assumptions underlying the Rational Method is that runoff is a function of the average rainfall rate during the time required for water to flow from the hydraulically most remote part of the drainage area under consideration to the design point. However, in practice, the time of concentration can be an empirical value that results in reasonable and acceptable peak flow calculations.

For urban areas, the time of concentration ( $t_c$ ) consists of an initial time or overland flow time ( $t_i$ ) plus the travel time ( $t_r$ ) in the storm sewer, paved gutter, roadside drainage ditch, or drainage channel. For non-urban areas, the time of concentration consists of an overland flow time ( $t_i$ ) plus the time of travel in a concentrated form, such as a swale or drainageway. The travel portion ( $t_r$ ) of the time of concentration can be estimated from the hydraulic properties of the storm sewer, gutter, swale, ditch, or drainageway. Initial time, on the other hand, will vary with surface slope, depression storage, surface cover, antecedent rainfall, and infiltration capacity of the soil, as well as distance of surface flow. The time of concentration is represented by Equation 6-7 for both urban and non-urban areas.

$$t_c = t_i + t_t \quad (\text{Eq. 6-7})$$

Where:

$t_c$  = time of concentration (min)

$t_i$  = overland (initial) flow time (min)

$t_t$  = travel time in the ditch, channel, gutter, storm sewer, etc. (min)

### 3.2.1 Overland (Initial) Flow Time

The overland flow time,  $t_i$ , may be calculated using Equation 6-8.

$$t_i = \frac{0.395(1.1 - C_5)\sqrt{L}}{S^{0.33}} \quad (\text{Eq. 6-8})$$

Where:

$t_i$  = overland (initial) flow time (min)

$C_5$  = runoff coefficient for 5-year frequency (see Table 6-6)

$L$  = length of overland flow (300 ft maximum for non-urban land uses, 100 ft maximum for urban land uses)

$S$  = average basin slope (ft/ft)

Note that in some urban watersheds, the overland flow time may be very small because flows quickly concentrate and channelize.

### 3.2.2 Travel Time

For catchments with overland and channelized flow, the time of concentration needs to be considered in combination with the travel time,  $t_t$ , which is calculated using the hydraulic properties of the swale, ditch, or channel. For preliminary work, the overland travel time,  $t_t$ , can be estimated with the help of Figure 6-25 or Equation 6-9 (Guo 1999).

$$V = C_v S_w^{0.5} \quad (\text{Eq. 6-9})$$

Where:

$V$  = velocity (ft/s)

$C_v$  = conveyance coefficient (from Table 6-7)

$S_w$  = watercourse slope (ft/ft)

**Table 6-7. Conveyance Coefficient,  $C_v$** 

Type of Land Surface	$C_v$
Heavy meadow	2.5
Tillage/field	5
Riprap (not buried)*	6.5
Short pasture and lawns	7
Nearly bare ground	10
Grassed waterway	15
Paved areas and shallow paved swales	20

\* For buried riprap, select  $C_v$  value based on type of vegetative cover.

The travel time is calculated by dividing the flow distance (in feet) by the velocity calculated using Equation 6-9 and converting units to minutes.

The time of concentration ( $t_c$ ) is then the sum of the overland flow time ( $t_i$ ) and the travel time ( $t_t$ ) per Equation 6-7.

### 3.2.3 First Design Point Time of Concentration in Urban Catchments

Using this procedure, the time of concentration at the first design point (typically the first inlet in the system) in an urbanized catchment should not exceed the time of concentration calculated using Equation 6-10. The first design point is defined as the point where runoff first enters the storm sewer system.

$$t_c = \frac{L}{180} + 10 \quad (\text{Eq. 6-10})$$

Where:

$t_c$  = maximum time of concentration at the first design point in an urban watershed (min)

$L$  = waterway length (ft)

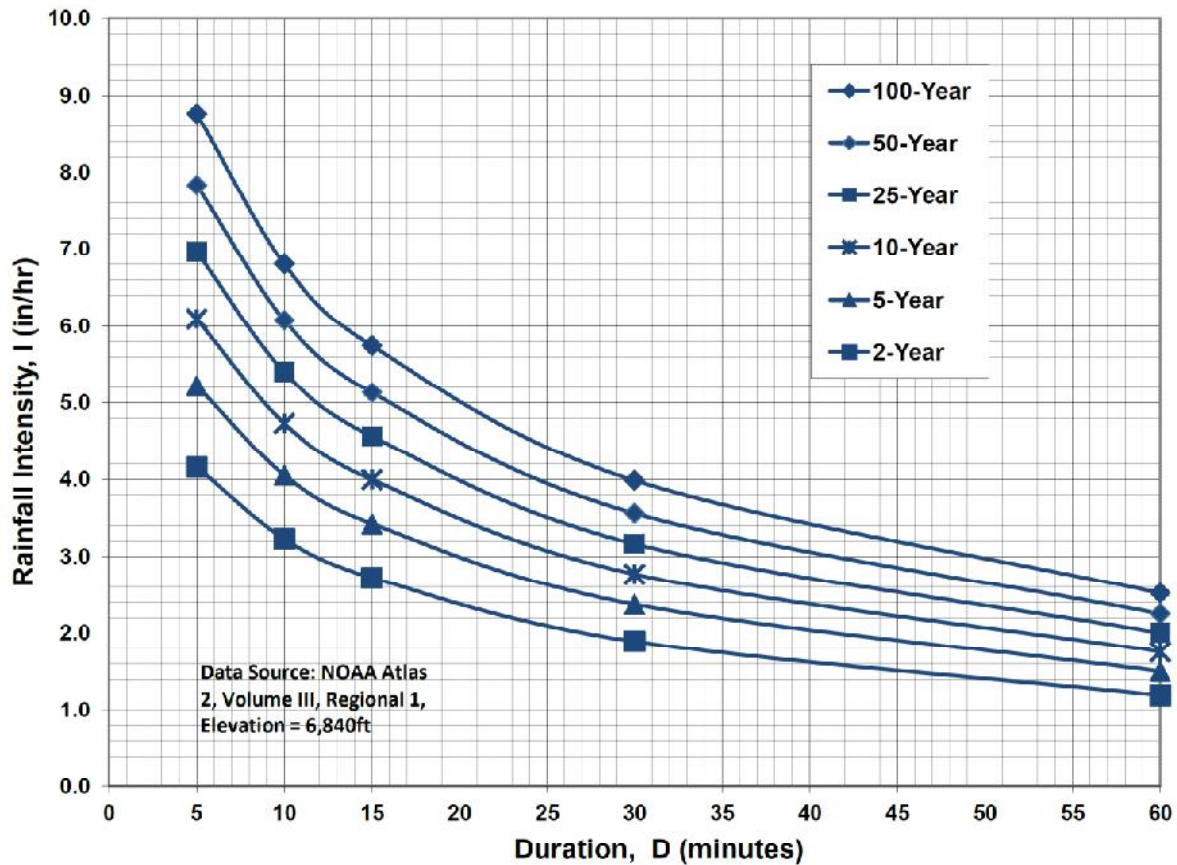
Equation 6-10 was developed using the rainfall-runoff data collected in the Denver region and, in essence, represents regional “calibration” of the Rational Method. Normally, Equation 6-10 will result in a lesser time of concentration at the first design point and will govern in an urbanized watershed. For subsequent design points, the time of concentration is calculated by accumulating the travel times in downstream drainageway reaches.

### 3.2.4 Minimum Time of Concentration

If the calculations result in a  $t_c$  of less than 10 minutes for undeveloped conditions, it is recommended that a minimum value of 10 minutes be used. The minimum  $t_c$  for urbanized areas is 5 minutes.

### 3.2.5 Post-Development Time of Concentration

As Equation 6-8 indicates, the time of concentration is a function of the 5-year runoff coefficient for a drainage basin. Typically, higher levels of imperviousness (higher 5-year runoff coefficients) correspond to shorter times of concentration, and lower levels of imperviousness correspond to longer times of

**Figure 6-5. Colorado Springs Rainfall Intensity Duration Frequency****IDF Equations**

$$I_{100} = -2.52 \ln(D) + 12.735$$

$$I_{50} = -2.25 \ln(D) + 11.375$$

$$I_{25} = -2.00 \ln(D) + 10.111$$

$$I_{10} = -1.75 \ln(D) + 8.847$$

$$I_5 = -1.50 \ln(D) + 7.583$$

$$I_2 = -1.19 \ln(D) + 6.035$$

Note: Values calculated by equations may not precisely duplicate values read from figure.

COLVIN HERITAGE FARMS MINOR SUBDIVISION  
COMPOSITE RUNOFF COEFFICIENTS

HISTORIC CONDITIONS

5-YEAR C-VALUES								
BASIN	TOTAL AREA (AC)	AREA (AC)	SUB-AREA 1 DEVELOPMENT/ COVER	C	AREA (AC)	SUB-AREA 2 DEVELOPMENT/ COVER	C	WEIGHTED C VALUE
OA1	13.69	0.50	BUILDING / PAVEMENT	0.900	13.19	MEADOW/FOREST	0.08	0.110
OA2	11.17	0.50	BUILDING / PAVEMENT	0.900	10.67	MEADOW/FOREST	0.08	0.117
A	17.28	0.50	BUILDING / PAVEMENT	0.900	16.78	MEADOW/FOREST	0.08	0.104
OA1,OA2,A	42.14							0.109
OB1	0.16	0.16	MEADOW/FOREST	0.080				0.080
B	2.52	2.52	MEADOW/FOREST	0.080				0.080
OB1,B	2.68							0.080

100-YEAR C-VALUES

BASIN	TOTAL AREA (AC)	AREA (AC)	SUB-AREA 1 DEVELOPMENT/ COVER	C	AREA (AC)	SUB-AREA 2 DEVELOPMENT/ COVER	C	WEIGHTED C VALUE
OA1	13.69	0.50	BUILDING / PAVEMENT	0.960	13.19	MEADOW/FOREST	0.35	0.372
OA2	11.17	0.50	BUILDING / PAVEMENT	0.960	10.67	MEADOW/FOREST	0.35	0.377
A	17.28	0.50	BUILDING / PAVEMENT	0.960	16.78	MEADOW/FOREST	0.35	0.368
OA1,OA2,A	42.14							0.372
OB1	0.16	0.16	MEADOW/FOREST	0.350				0.350
B	2.52	2.52	MEADOW/FOREST	0.350				0.350
OB1,B	2.68							0.350



COLVIN HERITAGE FARMS MINOR SUBDIVISION  
COMPOSITE RUNOFF COEFFICIENTS

DEVELOPED CONDITIONS

5-YEAR C-VALUES									
BASIN	TOTAL AREA (AC)	AREA (AC)	SUB-AREA 1 DEVELOPMENT/ COVER	C	AREA (AC)	SUB-AREA 2 DEVELOPMENT/ COVER	C	AREA (AC)	WEIGHTED C VALUE
OA1	13.69	0.50	BUILDING / PAVEMENT	0.900	13.19	MEADOW/FOREST	0.08		0.110
A1	8.61	0.50	BUILDING / PAVEMENT	0.900	8.11	MEADOW/FOREST	0.08		0.128
OA1,A1	22.30								0.117
OA2	11.17	0.50	BUILDING / PAVEMENT	0.900	10.67	MEADOW/FOREST	0.08		0.117
A2	8.67	0.50	BUILDING / PAVEMENT	0.900	8.17	MEADOW/FOREST	0.08		0.127
OA1,OA2,A1-A2	42.14								0.119
OB1	0.16	0.16	MEADOW/FOREST	0.080					0.080
B	2.52	0.10	PAVEMENT	0.900	2.42	MEADOW/FOREST	0.08		0.113
OB1,B	2.68								0.111

100-YEAR C-VALUES

BASIN	TOTAL AREA (AC)	AREA (AC)	SUB-AREA 1 DEVELOPMENT/ COVER	C	AREA (AC)	SUB-AREA 2 DEVELOPMENT/ COVER	C	AREA (AC)	WEIGHTED C VALUE
OA1	13.69	0.50	BUILDING / PAVEMENT	0.960	13.19	MEADOW/FOREST	0.35		0.372
A	8.61	0.50	BUILDING / PAVEMENT	0.960	8.11	MEADOW/FOREST	0.35		0.385
OA1,A	22.30								0.377
OA2	11.17	0.50	BUILDING / PAVEMENT	0.960	10.67	MEADOW/FOREST	0.35		0.377
A2	8.67	0.50	BUILDING / PAVEMENT	0.960	8.17	MEADOW/FOREST	0.35		0.385
OA1,OA2,A1-A2	42.14								0.379
OB1	0.16	0.16	MEADOW/FOREST	0.350					0.350
B	2.52	0.10	PAVEMENT	0.960	2.42	MEADOW/FOREST	0.35		0.374
OB1,B	2.68								0.373

COLVIN HERITAGE FARMS MINOR SUBDIVISION  
IMPERVIOUS AREA CALCULATIONS

IMPERVIOUS AREAS - TYPICAL 5-ACRE RURAL RESIDENTIAL LOTS - FOR REFERENCE ONLY									
BASIN	TOTAL AREA (AC)	AREA (%)	SUB-AREA 1 DEVELOPMENT/ COVER	PERCENT IMPERVIOUS	AREA (%)	SUB-AREA 2 DEVELOPMENT/ COVER	PERCENT IMPERVIOUS	AREA (%)	WEIGHTED % IMP
5-ACRE LOTS	5.00	7.00	BUILDING / PAVEMENT	100.00	93.00	MEADOW/FOREST	0		7.000
BASIN	TOTAL AREA (AC)	AREA (AC)	SUB-AREA 1 DEVELOPMENT/ COVER	PERCENT IMPERVIOUS	AREA (AC)	SUB-AREA 2 DEVELOPMENT/ COVER	PERCENT IMPERVIOUS	AREA (AC)	WEIGHTED % IMP
5-ACRE LOTS	5.00	0.35	BUILDING / PAVEMENT	100.00	4.65	MEADOW/FOREST	0		0.350

\* PRESUMPTIVE IMPERVIOUS VALUE FOR 5-ACRE LOTS IS 7.0% PER EL PASO COUNTY DRAINAGE BASIN FEE ADDENDUM DATED 6/21/01

DEVELOPED IMPERVIOUS AREAS - COLVIN HERITAGE FARMS MINOR SUBDIVISION									
BASIN	TOTAL AREA (AC)	AREA (AC)	SUB-AREA 1 DEVELOPMENT/ COVER	PERCENT IMPERVIOUS	AREA (AC)	SUB-AREA 2 DEVELOPMENT/ COVER	PERCENT IMPERVIOUS	AREA (AC)	WEIGHTED % IMP
OA1	24.86	1.00	BUILDING / PAVEMENT	100	23.86	MEADOW/FOREST	0		4.023
OA1,A	17.28	1.00	BUILDING / PAVEMENT	100	16.28	MEADOW/FOREST	0		5.787
OB1	0.16	0.16	MEADOW/FOREST	0					4.746
B	2.52	2.52	MEADOW/FOREST	0					0.000
OB1,B	2.68								0.000

\* NEW IMPERVIOUS AREA (FOR DRAINAGE FEE CALCULATION) = LOT 2 ONLY = (0.5 ACRES IMPERVIOUS / 9.67 AC) = 5.17%

**COLVIN HERITAGE FARMS MINOR SUBDIVISION  
RATIONAL METHOD**

**HISTORIC FLOWS**

BASIN	DESIGN POINT	C		Overland Flow			Channel flow				TOTAL T <sub>c</sub> (4) (MIN)	INTENSITY (6)		PEAK FLOW	
		5-YEAR	100-YEAR	LENGTH (FT)	SLOPE (FT/FT)	T <sub>co</sub> (1) (MIN)	CHANNEL LENGTH (FT)	CONVEYANCE COEFFICIENT C	SLOPE (FT/FT)	SCS (2) VELOCITY (FT/S)		5-YR (IN/HR)	100-YR (IN/HR)	Q5 (6) (CFS)	Q100 (6) (CFS)
OA1		0.110	0.372	300	0.093	14.9	250	15.0	0.116	5.11	15.8	3.45	5.79	5.19	29.47
OA2		0.117	0.377	300	0.047	18.6	850	15.0	0.051	3.39	22.8	2.89	4.86	3.78	20.45
A		0.104	0.368			0.0	1500	15.0	0.035	2.81	24.7	2.78	4.66	12.75	73.01
OA1,OA2,A	1	0.109	0.372												
OB1		0.080	0.350	150	0.040	14.4					14.4	3.58	6.01	0.05	0.34
B		0.080	0.350			0.0	1000	15.0	0.026	2.42	21.3	2.99	5.03	0.64	4.71
OB1,B	2	0.080	0.350												

**DEVELOPED FLOWS**

BASIN	DESIGN POINT	C		Overland Flow			Channel flow				TOTAL T <sub>c</sub> (4) (MIN)	INTENSITY (6)		PEAK FLOW	
		5-YEAR	100-YEAR	LENGTH (FT)	SLOPE (FT/FT)	T <sub>co</sub> (1) (MIN)	CHANNEL LENGTH (FT)	CONVEYANCE COEFFICIENT C	SLOPE (FT/FT)	SCS (2) VELOCITY (FT/S)		5-YR (IN/HR)	100-YR (IN/HR)	Q5 (6) (CFS)	Q100 (6) (CFS)
OA1		0.110	0.372	300	0.093	14.9	250	15.0	0.116	5.11	15.8	3.45	5.79	5.19	29.47
A1		0.128	0.385			0.0	850	15.0	0.035	2.81	20.8	3.03	5.09	7.91	42.76
OA1,A1	A1	0.117	0.377								22.8	2.89	4.86	3.78	20.45
OA2		0.117	0.377	300	0.047	18.6	850	15.0	0.051	3.39	24.7	2.77	4.65	13.90	74.30
A2		0.127	0.385			0.0	650	15.0	0.034	2.77					
OA1,OA2,A1,A2	1	0.119	0.379												
OB1		0.080	0.350	150	0.040	14.4					14.4	3.58	6.01	0.05	0.34
B		0.113	0.374			0.0	1000	15.0	0.026	2.42	21.3	2.99	5.03	0.89	5.02
OB1,B	2	0.111	0.373												

1) OVERLAND FLOW T<sub>co</sub> = (0.395\*(1.1-RUNOFF COEFFICIENT)\*(OVERLAND FLOW LENGTH^(0.5))/(SLOPE^(0.333)))

2) SCS VELOCITY = C \* ((SLOPE(FT/FT)^(0.5))

C = 2.5 FOR HEAVY MEADOW

C = 5 FOR TILLAGE/FIELD

C = 7 FOR SHORT PASTURE AND LAWNS

C = 10 FOR NEARLY BARE GROUND

C = 15 FOR GRASSED WATERWAY

C = 20 FOR PAVED AREAS AND SHALLOW PAVED SWALES

3) MANNING'S CHANNEL TRAVEL TIME = LV (WHEN CHANNEL VELOCITY IS KNOWN)

4) T<sub>c</sub> = T<sub>co</sub> + T<sub>t</sub>

\*\*\* IF TOTAL TIME OF CONCENTRATION IS LESS THAN 5 MINUTES, THEN 5 MINUTES IS USED

5) INTENSITY BASED ON I-D-F EQUATIONS IN CITY OF COLORADO SPRINGS DRAINAGE CRITERIA MANUAL

$$I_5 = -1.5 * \ln(T_c) + 7.583$$

$$I_{100} = -2.52 * \ln(T_c) + 12.735$$

6) Q = CIA

**APPENDIX C**  
**HYDRAULIC CALCULATIONS**

COLVIN MINOR SUBDIVISION  
CHANNEL CALCULATIONS  
DEVELOPED FLOWS

PROPOSED CHANNELS

CHANNEL	DESIGN POINT	PROPOSED SLOPE (%)	BOTTOM WIDTH (B, FT)	SIDE SLOPE (Z)	CHANNEL DEPTH (FT)	FRICTION FACTOR (n)	Q100 FLOW (CFS)	Q100 DEPTH (FT)	Q100 VELOCITY (FT/S)	CHANNEL LINING
A2	A1	3.4	12	10:1	2.0	0.030	42.8	0.5	4.9	GRASS

- 1) Channel flow calculations based on Manning's Equation
- 2) Channel depth includes 1' minimum freeboard
- 3) n = 0.03 for grass-lined non-irrigated channels (minimum)
- 4) Vmax = 5.0 fps for 100-year flows w/ grass-lined channels
- 5) Vmax = 8.0 fps for 100-year flows w/ Erosion Control Blankets (Tensor Eronet P300 or equal)

# Hydraulic Analysis Report

## Project Data

Project Title: Project - Colvin Minor Subdivision

Designer: JPS

Project Date: Saturday, February 20, 2021

Project Units: U.S. Customary Units

Notes:

## Channel Analysis: Channel Analysis-A2

Notes:

## Input Parameters

Channel Type: Trapezoidal

Side Slope 1 (Z1): 10.0000 ft/ft

Side Slope 2 (Z2): 10.0000 ft/ft

Channel Width: 12.0000 ft

Longitudinal Slope: 0.0340 ft/ft

Manning's n: 0.0300

Flow: 42.8000 cfs

## Result Parameters

Depth: 0.5111 ft

Area of Flow: 8.7453 ft<sup>2</sup>

Wetted Perimeter: 22.2729 ft

Hydraulic Radius: 0.3926 ft

Average Velocity: 4.8940 ft/s

Top Width: 22.2219 ft

Froude Number: 1.3748

Critical Depth: 0.6142 ft

Critical Velocity: 3.8412 ft/s

Critical Slope: 0.0170 ft/ft

Critical Top Width: 24.28 ft

Calculated Max Shear Stress: 1.0843 lb/ft<sup>2</sup>

Calculated Avg Shear Stress: 0.8330 lb/ft<sup>2</sup>

# **HY-8 Culvert Analysis Report – Colvin Culvert DP1**

## **Crossing Discharge Data**

Discharge Selection Method: Specify Minimum, Design, and Maximum Flow

Minimum Flow: 5 cfs

Design Flow: 13.9 cfs

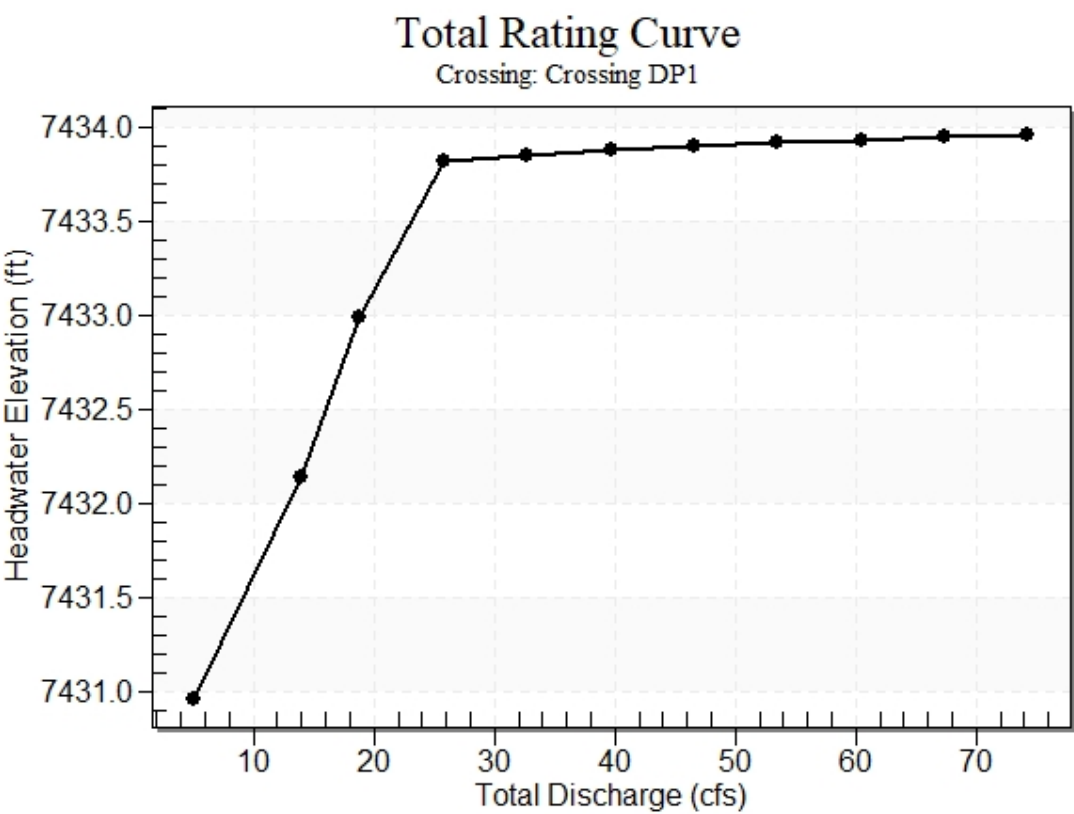
Maximum Flow: 74.3 cfs

**Table 1 - Summary of Culvert Flows at Crossing: Crossing DP1**

Headwater Elevation (ft)	Total Discharge (cfs)	Culvert DP1 Discharge (cfs)	Roadway Discharge (cfs)	Iterations
7430.97	5.00	5.00	0.00	1
7432.14	13.90	13.90	0.00	1
7432.99	18.86	18.86	0.00	1
7433.83	25.79	22.62	2.92	29
7433.86	32.72	22.74	9.81	5
7433.88	39.65	22.84	16.65	4
7433.90	46.58	22.92	23.31	3
7433.92	53.51	22.99	30.28	3
7433.94	60.44	23.06	37.25	3
7433.95	67.37	23.13	44.18	3
7433.97	74.30	23.19	51.08	3
7433.80	22.51	22.51	0.00	Overtopping



Rating Curve Plot for Crossing: Crossing DP1



**Table 2 - Culvert Summary Table: Culvert DP1**

Total Discharge (cfs)	Culvert Discharge (cfs)	Headwater Elevation (ft)	Inlet Control Depth (ft)	Outlet Control Depth (ft)	Flow Type	Normal Depth (ft)	Critical Depth (ft)	Outlet Depth (ft)	Tailwater Depth (ft)	Outlet Velocity (ft/s)	Tailwater Velocity (ft/s)
5.00	5.00	7430.97	1.166	0.0*	1-S2n	0.687	0.788	0.687	0.329	5.235	2.858
13.90	13.90	7432.14	2.341	1.016	5-S2n	1.240	1.343	1.240	0.571	6.793	3.877
18.86	18.86	7432.99	3.193	3.071	7-M2c	1.569	1.563	1.563	0.668	7.162	4.229
25.79	22.62	7433.83	4.025	3.873	7-M2c	2.000	1.694	1.694	0.784	7.969	4.613
32.72	22.74	7433.86	4.056	3.934	7-M2c	2.000	1.698	1.698	0.882	7.997	4.924
39.65	22.84	7433.88	4.080	3.967	7-M2c	2.000	1.701	1.701	0.970	8.019	5.187
46.58	22.92	7433.90	4.100	4.000	7-M2c	2.000	1.704	1.704	1.049	8.038	5.416
53.51	22.99	7433.92	4.119	4.031	7-M2c	2.000	1.706	1.706	1.122	8.055	5.620
60.44	23.06	7433.94	4.136	4.059	7-M2c	2.000	1.708	1.708	1.189	8.071	5.804
67.37	23.13	7433.95	4.152	4.093	7-M2c	2.000	1.710	1.710	1.252	8.086	5.973
74.30	23.19	7433.97	4.168	4.117	7-M2c	2.000	1.712	1.712	1.311	8.100	6.129

\* Full Flow Headwater elevation is below inlet invert.

\*\*\*\*\*

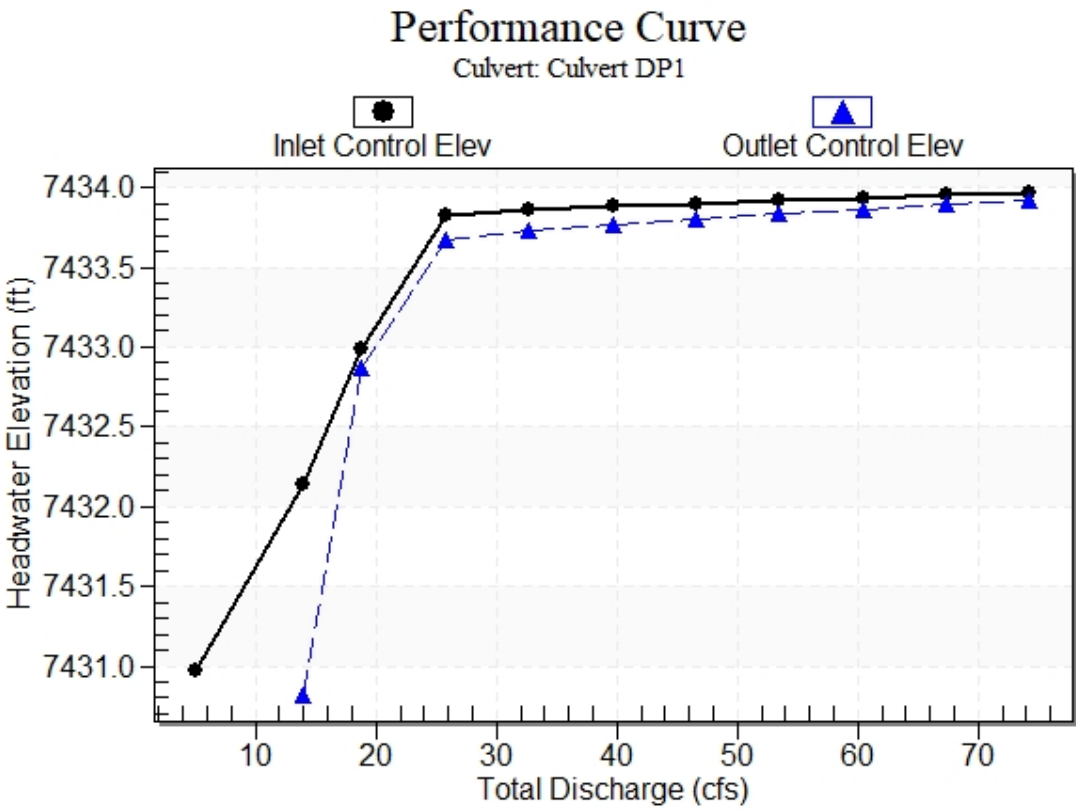
Straight Culvert

Inlet Elevation (invert): 7429.80 ft,    Outlet Elevation (invert): 7428.00 ft

Culvert Length: 70.02 ft,    Culvert Slope: 0.0257

\*\*\*\*\*

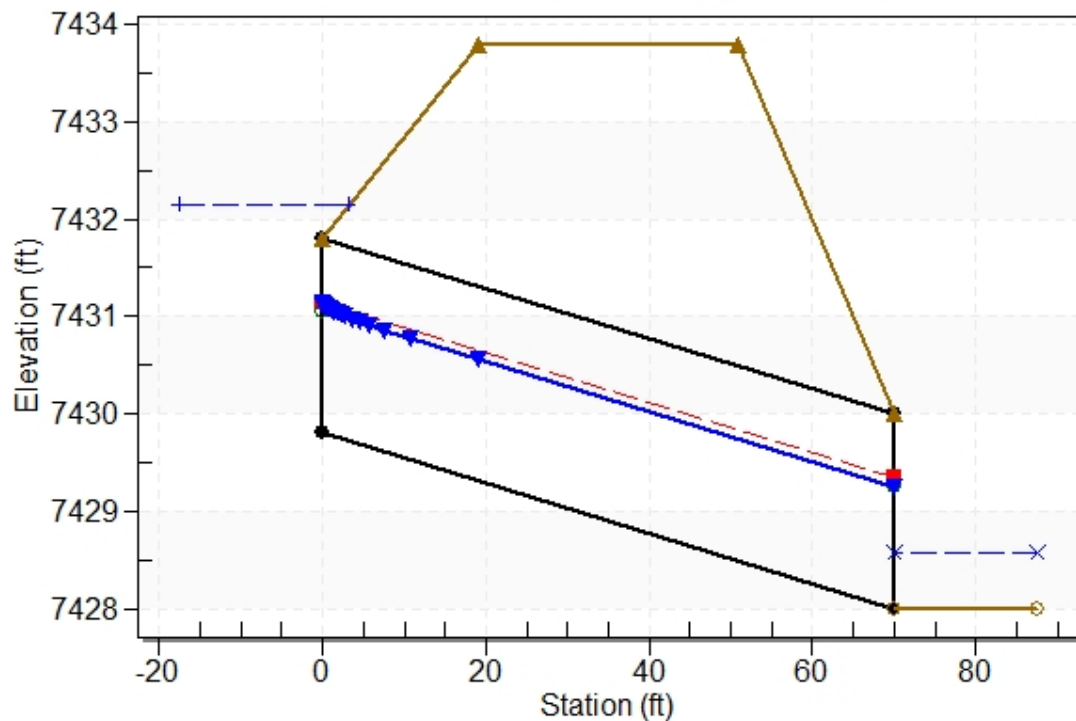
Culvert Performance Curve Plot: Culvert DP1



## Water Surface Profile Plot for Culvert: Culvert DP1

Crossing - Crossing DP1, Design Discharge - 13.9 cfs

Culvert - Culvert DP1, Culvert Discharge - 13.9 cfs



## Site Data - Culvert DP1

Site Data Option: Culvert Invert Data

Inlet Station: 0.00 ft

Inlet Elevation: 7429.80 ft

Outlet Station: 70.00 ft

Outlet Elevation: 7428.00 ft

Number of Barrels: 1

## Culvert Data Summary - Culvert DP1

Barrel Shape: Circular

Barrel Diameter: 2.00 ft

Barrel Material: Corrugated Steel

Embedment: 0.00 in

Barrel Manning's n: 0.0240

Culvert Type: Straight

Inlet Configuration: Thin Edge Projecting

Inlet Depression: None

**Table 3 - Downstream Channel Rating Curve (Crossing: Crossing DP1)**

Flow (cfs)	Water Surface Elev (ft)	Depth (ft)	Velocity (ft/s)	Shear (psf)	Froude Number
5.00	7428.33	0.33	2.86	0.41	0.98
13.90	7428.57	0.57	3.88	0.71	1.06
18.86	7428.67	0.67	4.23	0.83	1.08
25.79	7428.78	0.78	4.61	0.98	1.10
32.72	7428.88	0.88	4.92	1.10	1.12
39.65	7428.97	0.97	5.19	1.21	1.13
46.58	7429.05	1.05	5.42	1.31	1.15
53.51	7429.12	1.12	5.62	1.40	1.16
60.44	7429.19	1.19	5.80	1.48	1.17
67.37	7429.25	1.25	5.97	1.56	1.17
74.30	7429.31	1.31	6.13	1.64	1.18

**Tailwater Channel Data - Crossing DP1**

Tailwater Channel Option: Trapezoidal Channel

Bottom Width: 4.00 ft

Side Slope (H:V): 4.00 (\_:1)

Channel Slope: 0.0200

Channel Manning's n: 0.0300

Channel Invert Elevation: 7428.00 ft

**Roadway Data for Crossing: Crossing DP1**

Roadway Profile Shape: Constant Roadway Elevation

Crest Length: 250.00 ft

Crest Elevation: 7433.80 ft

Roadway Surface: Paved

Roadway Top Width: 32.00 ft

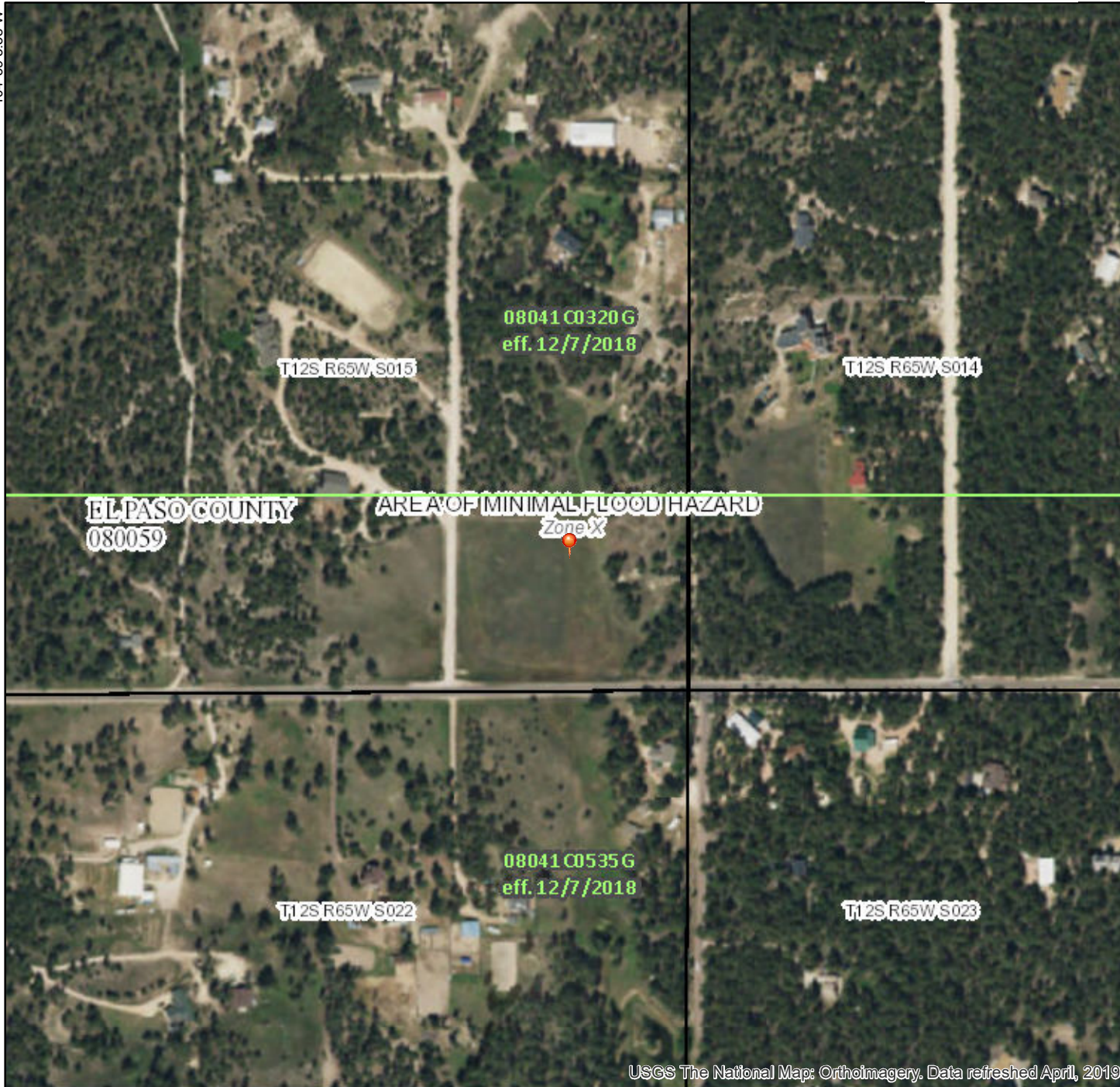
## **APPENDIX D**

### **FIGURES**

# National Flood Hazard Layer FIRMette



39°0'12.68"N



## Legend

SEE FIS REPORT FOR DETAILED LEGEND AND INDEX MAP FOR FIRM PANEL LAYOUT

SPECIAL FLOOD HAZARD AREAS		Without Base Flood Elevation (BFE) Zone A, V, A99
		With BFE or Depth Zone AE, AO, AH, VE, AR
		Regulatory Floodway
OTHER AREAS OF FLOOD HAZARD		0.2% Annual Chance Flood Hazard, Areas of 1% annual chance flood with average depth less than one foot or with drainage areas of less than one square mile Zone X
		Future Conditions 1% Annual Chance Flood Hazard Zone X
		Area with Reduced Flood Risk due to Levee. See Notes. Zone X
		Area with Flood Risk due to Levee Zone D
OTHER AREAS		NO SCREEN Area of Minimal Flood Hazard Zone X
		Effective LOMRs
GENERAL STRUCTURES		Area of Undetermined Flood Hazard Zone D
		Channel, Culvert, or Storm Sewer
		Levee, Dike, or Floodwall
OTHER FEATURES		20.2 Cross Sections with 1% Annual Chance Water Surface Elevation
		17.5 Cross Sections with 1% Annual Chance Water Surface Elevation
		513 Coastal Transect
		Base Flood Elevation Line (BFE)
		Limit of Study
		Jurisdiction Boundary
		Coastal Transect Baseline
MAP PANELS		Profile Baseline
		Hydrographic Feature
		Digital Data Available
		No Digital Data Available
		Unmapped



The pin displayed on the map is an approximate point selected by the user and does not represent an authoritative property location.

This map complies with FEMA's standards for the use of digital flood maps if it is not void as described below. The basemap shown complies with FEMA's basemap accuracy standards

The flood hazard information is derived directly from the authoritative NFHL web services provided by FEMA. This map was exported on **5/5/2020 at 2:09:16 PM** and does not reflect changes or amendments subsequent to this date and time. The NFHL and effective information may change or become superseded by new data over time.

This map image is void if the one or more of the following map elements do not appear: basemap imagery, flood zone labels, legend, scale bar, map creation date, community identifiers, FIRM panel number, and FIRM effective date. Map images for unmapped and unmodernized areas cannot be used for regulatory purposes.

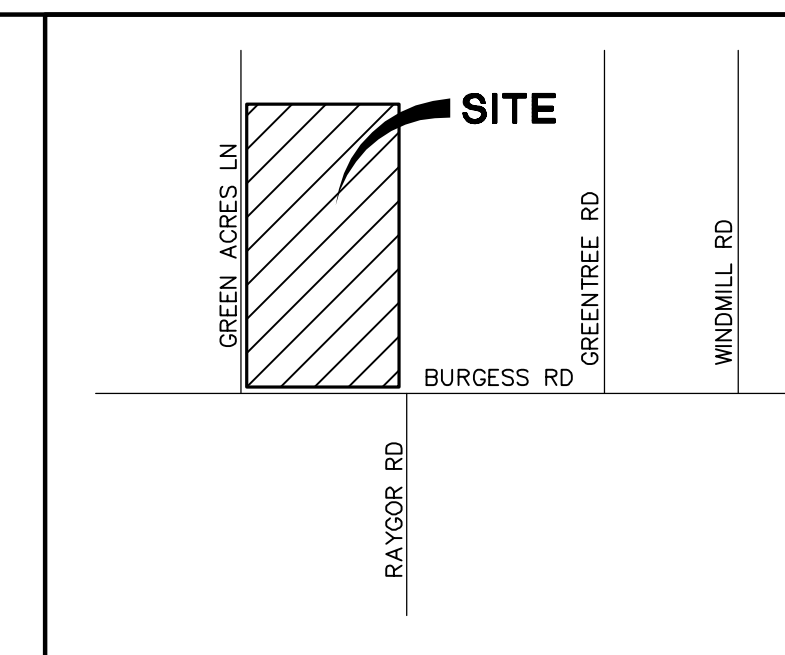
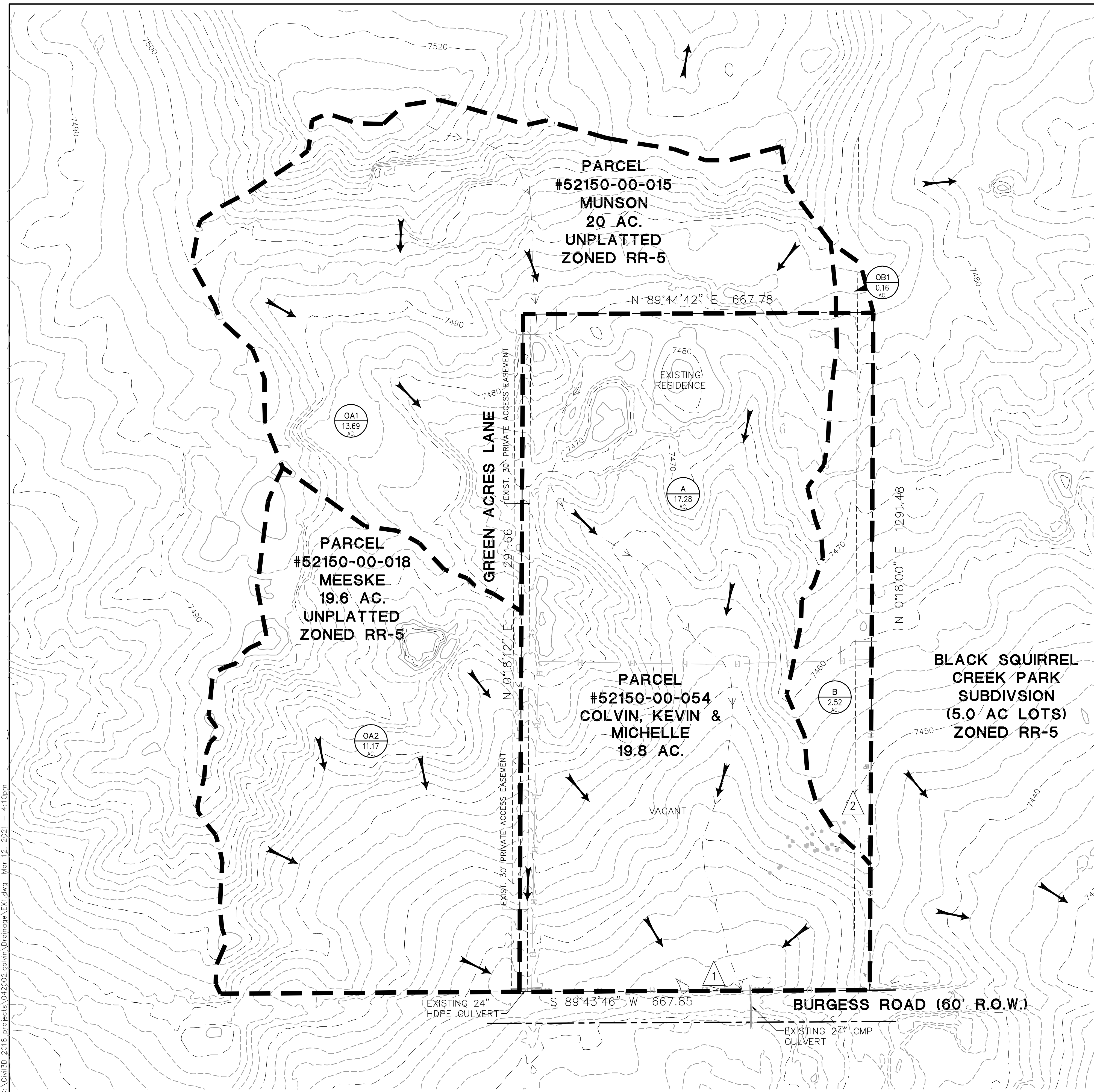
USGS The National Map: Orthoimagery. Data refreshed April, 2019.

0 250 500 1,000 1,500 2,000 Feet 1:6,000

38°59'44.72"N

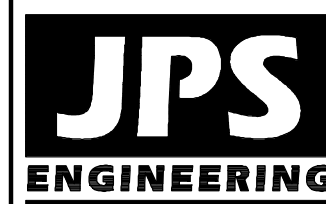
104°38'26.12"W





### VICINITY MAP

# COLVIN HERITAGE FARMS SUBDIVISION FILING 1



19 E. Willamette Ave.  
Colorado Springs, CO  
80903  
PH: 719-477-9429  
FAX: 719-471-0766  
[www.jpsengr.com](http://www.jpsengr.com)






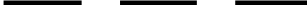

CALL UTILITY NOTIFICATION  
CENTER OF COLORADO  
1-800-922-1987  
CALL 2-BUSINESS DAYS IN ADVANCE  
BEFORE YOU DIG, GRADE, OR EXCAVATE  
FOR THE MARKING OF UNDERGROUND  
MEMBER UTILITIES.

No.	REVISION	BY	DATE

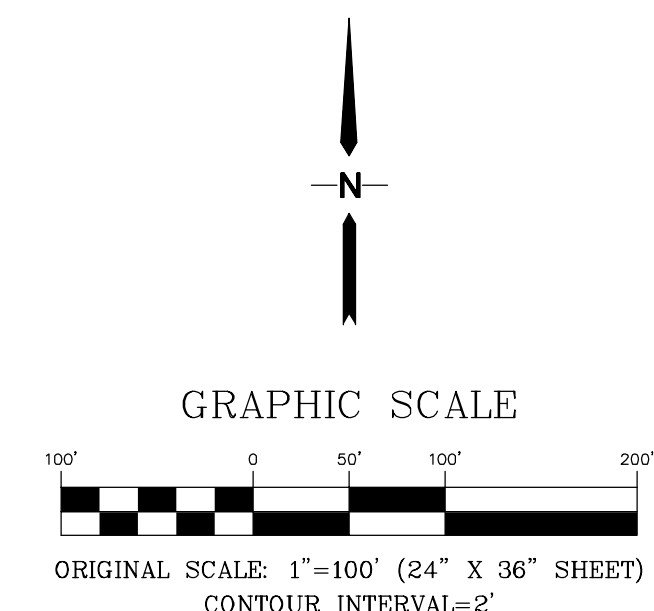
# HISTORIC DRAINAGE PLAN

HORZ. SCALE: 1"=100'	DRAWN: BJJ
VERT. SCALE: N/A	DESIGNED: JPS
SURVEYED: COMPASS	CHECKED: JPS
CREATED: 4/29/20	LAST MODIFIED: 3/12/21
PROJECT NO: 042002	MODIFIED BY: MSP
SHEET:	

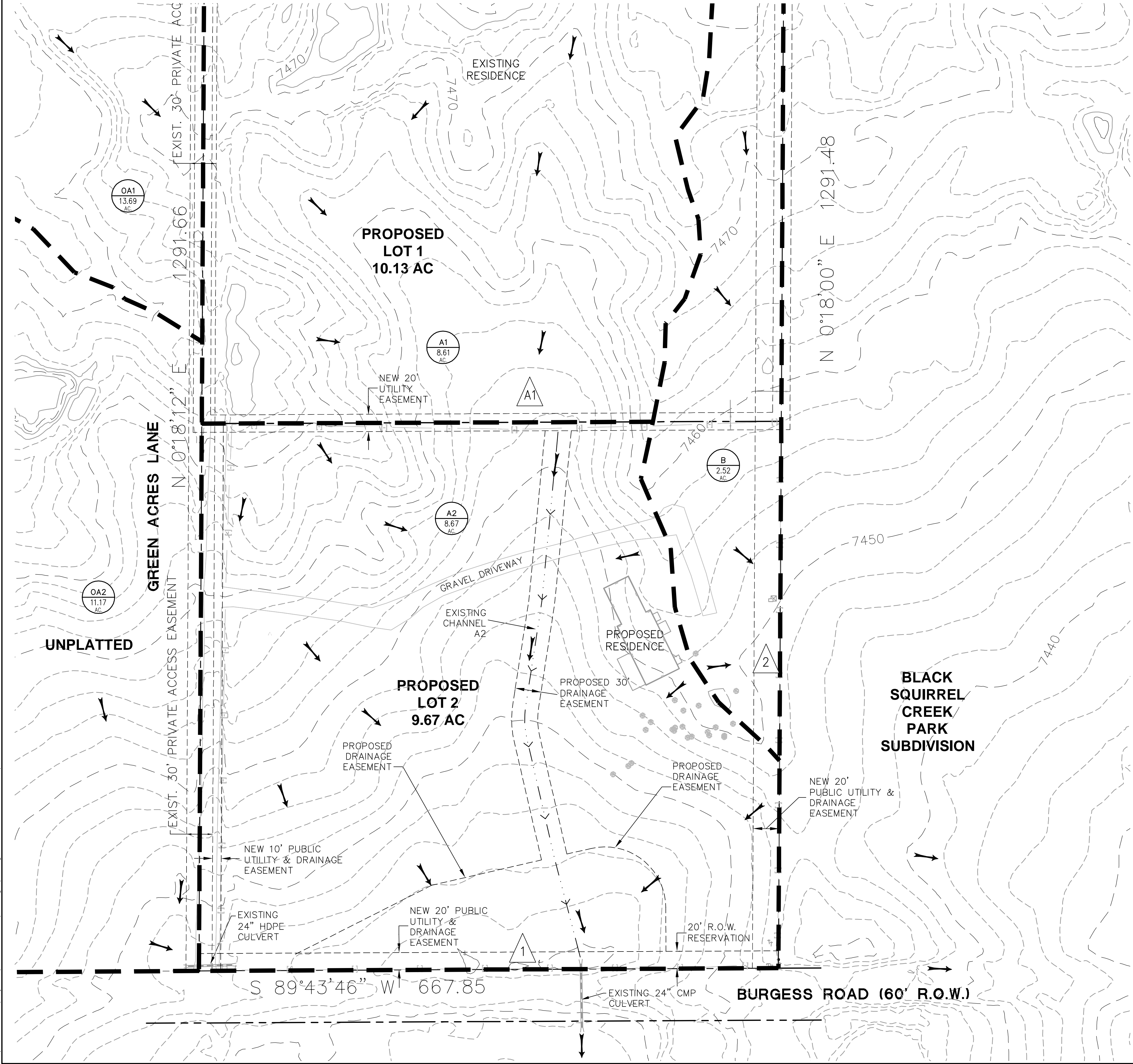
## LEGEND

	PROPERTY LINES
	MAJOR BASIN BOUNDARY
	EXISTING CONTOUR
	FLOWLINE (T <sub>c</sub> FLOW PATH)
	PROPOSED FLOW DIRECTION ARROW

HYDROLOGY SUMMARY TABLE		
DESIGN POINT	$Q_5$ (CFS)	$Q_{100}$ (CFS)
1	12.8	73.0
2	0.6	4.7



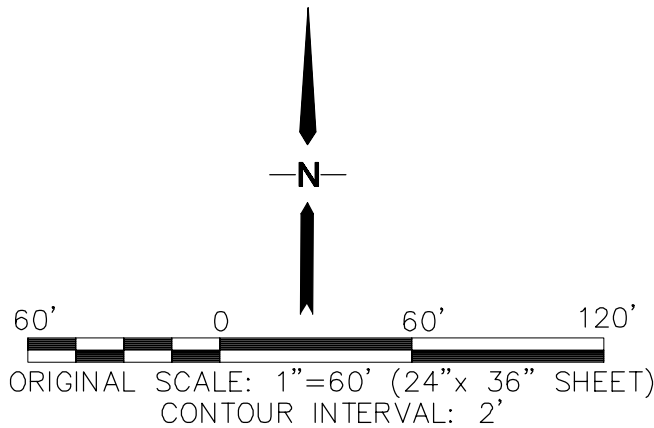
C:\Civil3D\2018\projects\042002.colvin\Drainage\D1.dwg Mar 12, 2021 4:09pm



**DRAINAGE LEGEND**

- RIPRAP
- FLOW DIRECTION ARROW
- FLOWLINE
- MAJOR DRAINAGE BASIN BOUNDARY
- DESIGN POINT
- DEVELOPED BASIN DESIGNATION
- DEVELOPED BASIN AREA (ACRES)

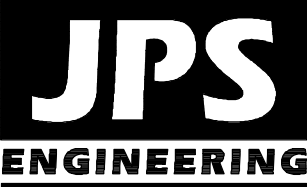
SUMMARY HYDROLOGY TABLE		
DESIGN POINT	Q5 (CFS)	Q100 (CFS)
A1	7.9	42.8
1	13.9	74.3
2	0.9	5.0



**GENERAL DRAINAGE NOTES:**

- CONTRACTORS AND OWNERS SHALL PROVIDE POSITIVE DRAINAGE AWAY FROM STRUCTURES AND ACCOUNT FOR POTENTIAL CROSS-LOT DRAINAGE IMPACTS WITHIN EACH LOT.
- CONTRACTORS AND PROPERTY OWNERS SHALL IMPLEMENT & MAINTAIN PROPER BEST MANAGEMENT PRACTICES FOR DRAINAGE AND EROSION CONTROL FOR PROTECTION OF DOWNSTREAM PROPERTIES.

**COLVIN HERITAGE FARMS SUBDIVISION FILING 1**



19 E. Willamette Ave.  
Colorado Springs, CO 80903  
PH: 719-477-9429  
FAX: 719-471-0766  
www.jpsengr.com



CALL UTILITY NOTIFICATION  
CENTER OF COLORADO  
**1-800-922-1987**  
CALL 2-BUSINESS DAYS IN ADVANCE  
BEFORE YOU DIG, GRADE, OR EXCAVATE  
FOR THE MARKING OF UNDERGROUND  
MEMBER UTILITIES.

No.	REVISION	BY	DATE

**DEVELOPED  
DRAINAGE PLAN**

HORZ. SCALE: 1"=60'	DRAWN: BJJ
VERT. SCALE: N/A	DESIGNED: JPS
SURVEYED: COMPASS	CHECKED: JPS
CREATED: 4/29/20	LAST MODIFIED: 3/12/21
PROJECT NO: 042002	MODIFIED BY: MSP
SHEET:	D1