

Front Range-Midway Solar Project Fire Protection Plan

The intent of this report is to analyze the Front Range-Midway Solar Project's (Project) adherence to the El Paso County Land Development Code Section 6.3.3 Fire Protection and Wildfire Mitigation Standards. Project design and access was reviewed in consideration of the wildfire risks and need to provide adequate fire protection in order to:

- Regulate development, buildings and structures so as to minimize the hazard to public health, safety, and welfare;
- Ensure that adequate fire protection is available for new development;
- Implement wildfire hazard reduction in new development;
- Encourage voluntary efforts to reduce wildfire hazards; and
- Reduce the demands from the public for relief and protection of structures and facilities.

The Project was analyzed for the risk of wildfire based on the *Wildfire Hazards Based on Colorado Vegetation Classification Project – El Paso County, Colorado* as referenced in Section 6.3.3(A)(6). The Project is located in a low hazard – non forested area of the county (see attached). As such, wildfire hazard mitigation would not be required since wildfire hazard is minimal on the Project. Nonetheless, the Project will conform to the additional fire-related standards under Section 6.3.3 as requested by the county and described below.

The Front Range-Midway Solar Project (Project) will receive services from the Hanover Fire Protection District (HFPD) through a mutual aid agreement with Hanover Fire Department (HFD). The HFPD provides fire and emergency services from three stations located at 17550 S. Peyton Way, 12225 Old Pueblo Rd. and 7930 Indian Village Heights. Services provided by Hanover Fire include wildland, structure, and vehicle fires; medical emergencies; rescues; and hazardous materials responses at a limited capacity for operational response. El Paso County will provide assistance on hazardous materials calls as needed. High angle rescue and heavy rescue would be provided by Ft Carson or Colorado Springs on a mutual aid agreement.

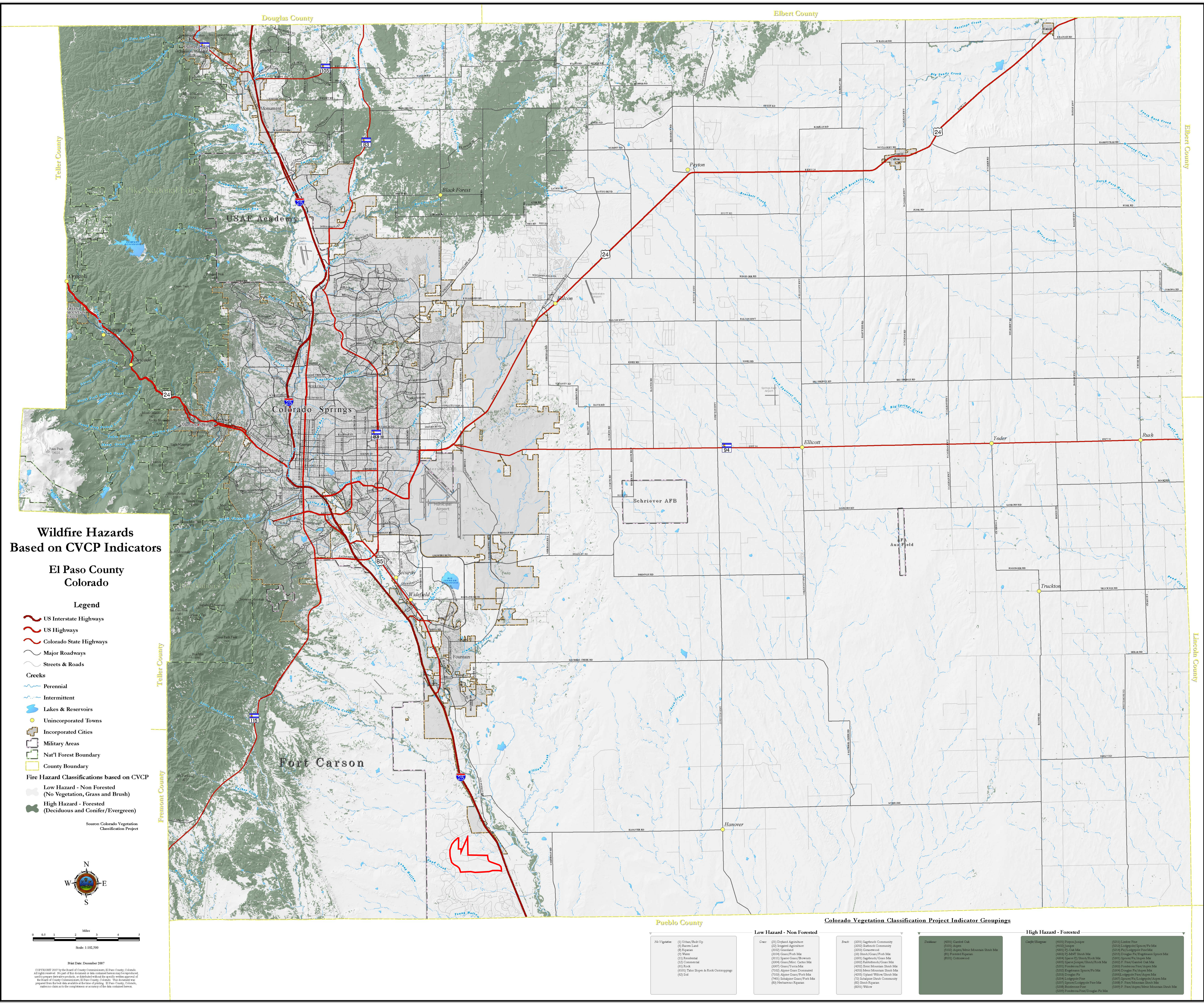
HFPD is equipped to handle first alarm fires and personnel include two medical squads. The department's equipment includes three engine pump trucks, three tender pump trucks, three brush trucks, a heavy brush pump truck, and two ambulances to respond to emergencies. Water will be pulled from one or more of the three Wigwam Water District Taps procured for the Project and located within the proposed WSEO boundary. El Paso County has a haz mat decontamination trailer if needed. Their longest ladder is 25 feet. If a longer ladder is needed the Security Fire Department responds with their 75-foot ladder truck on all structure fires. The department's goal response time for 2017 is 10 minutes for first department vehicle on scene. In 2016 the HFPD averaged a 12 minute response time.

The Project has received a Fire Commitment Letter (see attached) from the HFPD and has agreed to the following requests to ensure adequate site access and safety for HFPD during incident response:

- Roads should be brought up to all season access during Project construction.
- Knox boxes will be located at all main gates along the perimeter of the solar facility.
- The Project will support class room training during construction for firefighter and EMS workers on

potential hazards during construction of the Project.

- The Project will support sight training for firefighter and EMS workers once construction is complete.
- The Project will control weeds on the Project to remove fuels.

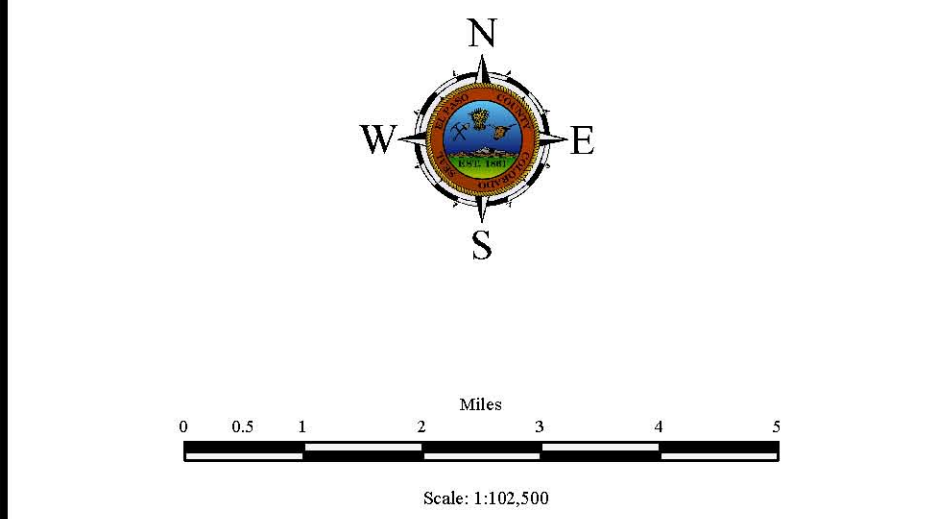


Wildfire Hazards Based on CVCP Indicators

El Paso County Colorado

- Legend**
- US Interstate Highways
 - US Highways
 - Colorado State Highways
 - Major Roadways
 - Streets & Roads
 - Creeks
 - Perennial
 - Intermittent
 - Lakes & Reservoirs
 - Unincorporated Towns
 - Incorporated Cities
 - Military Areas
 - Nat'l Forest Boundary
 - County Boundary
 - Fire Hazard Classifications based on CVCP
 - Low Hazard - Non Forested (No Vegetation, Grass and Brush)
 - High Hazard - Forested (Deciduous and Conifer/Evergreen)

Source: Colorado Vegetation Classification Project



Copyright 2007 by the Board of County Commissioners, El Paso County, Colorado. All rights reserved. No part of this document or data contained herein may be reproduced, stored in a retrieval system, or transmitted in any form or by any means, electronic, mechanical, photocopying, recording, or by any information storage and retrieval system, without the prior written permission of the Board of County Commissioners, El Paso County, Colorado. This document was prepared from the best data available at the time of printing. El Paso County, Colorado, makes no claim as to the completeness or accuracy of the data contained herein.

Colorado Vegetation Classification Project Indicator Groupings			
Low Hazard - Non Forested		High Hazard - Forested	
No Vegetation: <ul style="list-style-type: none">(1) Urban/Build-Up(2) Barren Land(3) Riparian(4) Wetland(5) Residential(6) Commercial(7) Road(8) Thin Slopes & Rock Outcroppings(9) Soil	Grass: <ul style="list-style-type: none">(10) Dryland Agriculture(11) Irrigated Agriculture(12) Grassland(13) Grass/Forb Mix(14) Sparse Grass/Berms(15) Grass/Misc. Grass Mix(16) Sparse Grass/Forb Mix(17) Sparse Grass/Forb Mix(18) Sparse Grass/Forb Mix(19) Sparse Grass/Forb Mix(20) Sparse Grass/Forb Mix(21) Sparse Grass/Forb Mix(22) Sparse Grass/Forb Mix(23) Sparse Grass/Forb Mix(24) Sparse Grass/Forb Mix(25) Sparse Grass/Forb Mix(26) Sparse Grass/Forb Mix(27) Sparse Grass/Forb Mix(28) Sparse Grass/Forb Mix(29) Sparse Grass/Forb Mix(30) Sparse Grass/Forb Mix(31) Sparse Grass/Forb Mix(32) Sparse Grass/Forb Mix(33) Sparse Grass/Forb Mix(34) Sparse Grass/Forb Mix(35) Sparse Grass/Forb Mix(36) Sparse Grass/Forb Mix(37) Sparse Grass/Forb Mix(38) Sparse Grass/Forb Mix(39) Sparse Grass/Forb Mix(40) Sparse Grass/Forb Mix(41) Sparse Grass/Forb Mix(42) Sparse Grass/Forb Mix(43) Sparse Grass/Forb Mix(44) Sparse Grass/Forb Mix(45) Sparse Grass/Forb Mix(46) Sparse Grass/Forb Mix(47) Sparse Grass/Forb Mix(48) Sparse Grass/Forb Mix(49) Sparse Grass/Forb Mix(50) Sparse Grass/Forb Mix(51) Sparse Grass/Forb Mix(52) Sparse Grass/Forb Mix(53) Sparse Grass/Forb Mix(54) Sparse Grass/Forb Mix(55) Sparse Grass/Forb Mix(56) Sparse Grass/Forb Mix(57) Sparse Grass/Forb Mix(58) Sparse Grass/Forb Mix(59) Sparse Grass/Forb Mix(60) Sparse Grass/Forb Mix(61) Sparse Grass/Forb Mix(62) Sparse Grass/Forb Mix(63) Sparse Grass/Forb Mix(64) Sparse Grass/Forb Mix(65) Sparse Grass/Forb Mix(66) Sparse Grass/Forb Mix(67) Sparse Grass/Forb Mix(68) Sparse Grass/Forb Mix(69) Sparse Grass/Forb Mix(70) Sparse Grass/Forb Mix(71) Sparse Grass/Forb Mix(72) Sparse Grass/Forb Mix(73) Sparse Grass/Forb Mix(74) Sparse Grass/Forb Mix(75) Sparse Grass/Forb Mix(76) Sparse Grass/Forb Mix(77) Sparse Grass/Forb Mix(78) Sparse Grass/Forb Mix(79) Sparse Grass/Forb Mix(80) Sparse Grass/Forb Mix(81) Sparse Grass/Forb Mix(82) Sparse Grass/Forb Mix(83) Sparse Grass/Forb Mix(84) Sparse Grass/Forb Mix(85) Sparse Grass/Forb Mix(86) Sparse Grass/Forb Mix(87) Sparse Grass/Forb Mix(88) Sparse Grass/Forb Mix(89) Sparse Grass/Forb Mix(90) Sparse Grass/Forb Mix(91) Sparse Grass/Forb Mix(92) Sparse Grass/Forb Mix(93) Sparse Grass/Forb Mix(94) Sparse Grass/Forb Mix(95) Sparse Grass/Forb Mix(96) Sparse Grass/Forb Mix(97) Sparse Grass/Forb Mix(98) Sparse Grass/Forb Mix(99) Sparse Grass/Forb Mix(100) Sparse Grass/Forb Mix	Brush: <ul style="list-style-type: none">(101) Sagebrush Community(102) Shrubland Community(103) Shrubland(104) Shrub/Forb Mix(105) Shrub/Forb Mix(106) Shrub/Forb Mix(107) Shrub/Forb Mix(108) Shrub/Forb Mix(109) Shrub/Forb Mix(110) Shrub/Forb Mix(111) Shrub/Forb Mix(112) Shrub/Forb Mix(113) Shrub/Forb Mix(114) Shrub/Forb Mix(115) Shrub/Forb Mix(116) Shrub/Forb Mix(117) Shrub/Forb Mix(118) Shrub/Forb Mix(119) Shrub/Forb Mix(120) Shrub/Forb Mix(121) Shrub/Forb Mix(122) Shrub/Forb Mix(123) Shrub/Forb Mix(124) Shrub/Forb Mix(125) Shrub/Forb Mix(126) Shrub/Forb Mix(127) Shrub/Forb Mix(128) Shrub/Forb Mix(129) Shrub/Forb Mix(130) Shrub/Forb Mix(131) Shrub/Forb Mix(132) Shrub/Forb Mix(133) Shrub/Forb Mix(134) Shrub/Forb Mix(135) Shrub/Forb Mix(136) Shrub/Forb Mix(137) Shrub/Forb Mix(138) Shrub/Forb Mix(139) Shrub/Forb Mix(140) Shrub/Forb Mix(141) Shrub/Forb Mix(142) Shrub/Forb Mix(143) Shrub/Forb Mix(144) Shrub/Forb Mix(145) Shrub/Forb Mix(146) Shrub/Forb Mix(147) Shrub/Forb Mix(148) Shrub/Forb Mix(149) Shrub/Forb Mix(150) Shrub/Forb Mix(151) Shrub/Forb Mix(152) Shrub/Forb Mix(153) Shrub/Forb Mix(154) Shrub/Forb Mix(155) Shrub/Forb Mix(156) Shrub/Forb Mix(157) Shrub/Forb Mix(158) Shrub/Forb Mix(159) Shrub/Forb Mix(160) Shrub/Forb Mix(161) Shrub/Forb Mix(162) Shrub/Forb Mix(163) Shrub/Forb Mix(164) Shrub/Forb Mix(165) Shrub/Forb Mix(166) Shrub/Forb Mix(167) Shrub/Forb Mix(168) Shrub/Forb Mix(169) Shrub/Forb Mix(170) Shrub/Forb Mix(171) Shrub/Forb Mix(172) Shrub/Forb Mix(173) Shrub/Forb Mix(174) Shrub/Forb Mix(175) Shrub/Forb Mix(176) Shrub/Forb Mix(177) Shrub/Forb Mix(178) Shrub/Forb Mix(179) Shrub/Forb Mix(180) Shrub/Forb Mix(181) Shrub/Forb Mix(182) Shrub/Forb Mix(183) Shrub/Forb Mix(184) Shrub/Forb Mix(185) Shrub/Forb Mix(186) Shrub/Forb Mix(187) Shrub/Forb Mix(188) Shrub/Forb Mix(189) Shrub/Forb Mix(190) Shrub/Forb Mix(191) Shrub/Forb Mix(192) Shrub/Forb Mix(193) Shrub/Forb Mix(194) Shrub/Forb Mix(195) Shrub/Forb Mix(196) Shrub/Forb Mix(197) Shrub/Forb Mix(198) Shrub/Forb Mix(199) Shrub/Forb Mix(200) Shrub/Forb Mix	Deciduous: <ul style="list-style-type: none">(201) Gambel Oak(202) Aspen(203) Aspen/Misc. Mountain Shrub Mix(204) Gambel Oak(205) Gambel Oak(206) Gambel Oak(207) Gambel Oak(208) Gambel Oak(209) Gambel Oak(210) Gambel Oak(211) Gambel Oak(212) Gambel Oak(213) Gambel Oak(214) Gambel Oak(215) Gambel Oak(216) Gambel Oak(217) Gambel Oak(218) Gambel Oak(219) Gambel Oak(220) Gambel Oak(221) Gambel Oak(222) Gambel Oak(223) Gambel Oak(224) Gambel Oak(225) Gambel Oak(226) Gambel Oak(227) Gambel Oak(228) Gambel Oak(229) Gambel Oak(230) Gambel Oak(231) Gambel Oak(232) Gambel Oak(233) Gambel Oak(234) Gambel Oak(235) Gambel Oak(236) Gambel Oak(237) Gambel Oak(238) Gambel Oak(239) Gambel Oak(240) Gambel Oak(241) Gambel Oak(242) Gambel Oak(243) Gambel Oak(244) Gambel Oak(245) Gambel Oak(246) Gambel Oak(247) Gambel Oak(248) Gambel Oak(249) Gambel Oak(250) Gambel Oak(251) Gambel Oak(252) Gambel Oak(253) Gambel Oak(254) Gambel Oak(255) Gambel Oak(256) Gambel Oak(257) Gambel Oak(258) Gambel Oak(259) Gambel Oak(260) Gambel Oak(261) Gambel Oak(262) Gambel Oak(263) Gambel Oak(264) Gambel Oak(265) Gambel Oak(266) Gambel Oak(267) Gambel Oak(268) Gambel Oak(269) Gambel Oak(270) Gambel Oak(271) Gambel Oak(272) Gambel Oak(273) Gambel Oak(274) Gambel Oak(275) Gambel Oak(276) Gambel Oak(277) Gambel Oak(278) Gambel Oak(279) Gambel Oak(280) Gambel Oak(281) Gambel Oak(282) Gambel Oak(283) Gambel Oak(284) Gambel Oak(285) Gambel Oak(286) Gambel Oak(287) Gambel Oak(288) Gambel Oak(289) Gambel Oak(290) Gambel Oak(291) Gambel Oak(292) Gambel Oak(293) Gambel Oak(294) Gambel Oak(295) Gambel Oak(296) Gambel Oak(297) Gambel Oak(298) Gambel Oak(299) Gambel Oak(300) Gambel Oak



Hanover Fire Protection District
13325 Old Pueblo Road
Fountain, CO 80817
(719)382-1900



To Dave Iadarola
Project Manager for Front Range-Midway Solar Project
From Chief Tatum
Hanover Fire Protection District

Re: Commitment Letter

Dear Dave:

Based upon our discussions over the past year or so, and the information we have exchanged, we are providing this commitment letter to provide Fire and EMS service for this project. This commitment letter to provide service is on condition of the final project proposal submission to El Paso County Land Development services.

Hanover Fire Department still reserves the right to review and provide feedback on the submitted project packet. We will be interested in how this project will address the road impacts, the primary roads for the construction to be brought up to all season access and what roads may be close or restrict access to the area during the construction phase of the project. We will be also interested in the Pioneer Community access to their homes during this process and how they will ensure access is not limited during the construction.

Hanover fire at this time does not believe there will be an adverse impact to our ability to provide service to this project from the previous talks we have had with the project manager. We will request that there is Knox boxes at all main gates to each solar farm for fire department access. During the project construction we would like to have some class room training for firefighter and EMS workers on hazards we may come across and sight training once the construction is completed. We are also looking for weed control plans on the outside and inside of the fence area. We are also looking for all season access interior roads next to the fences for vehicle access.

If you have any question please give me a call.

Carl Tatum
Hanover Fire Chief
13325 Old Pueblo Rd
Fountain Colorado 80817
Office 719-382-1900
Cell 719-492-2729
hanover3500@aol.com