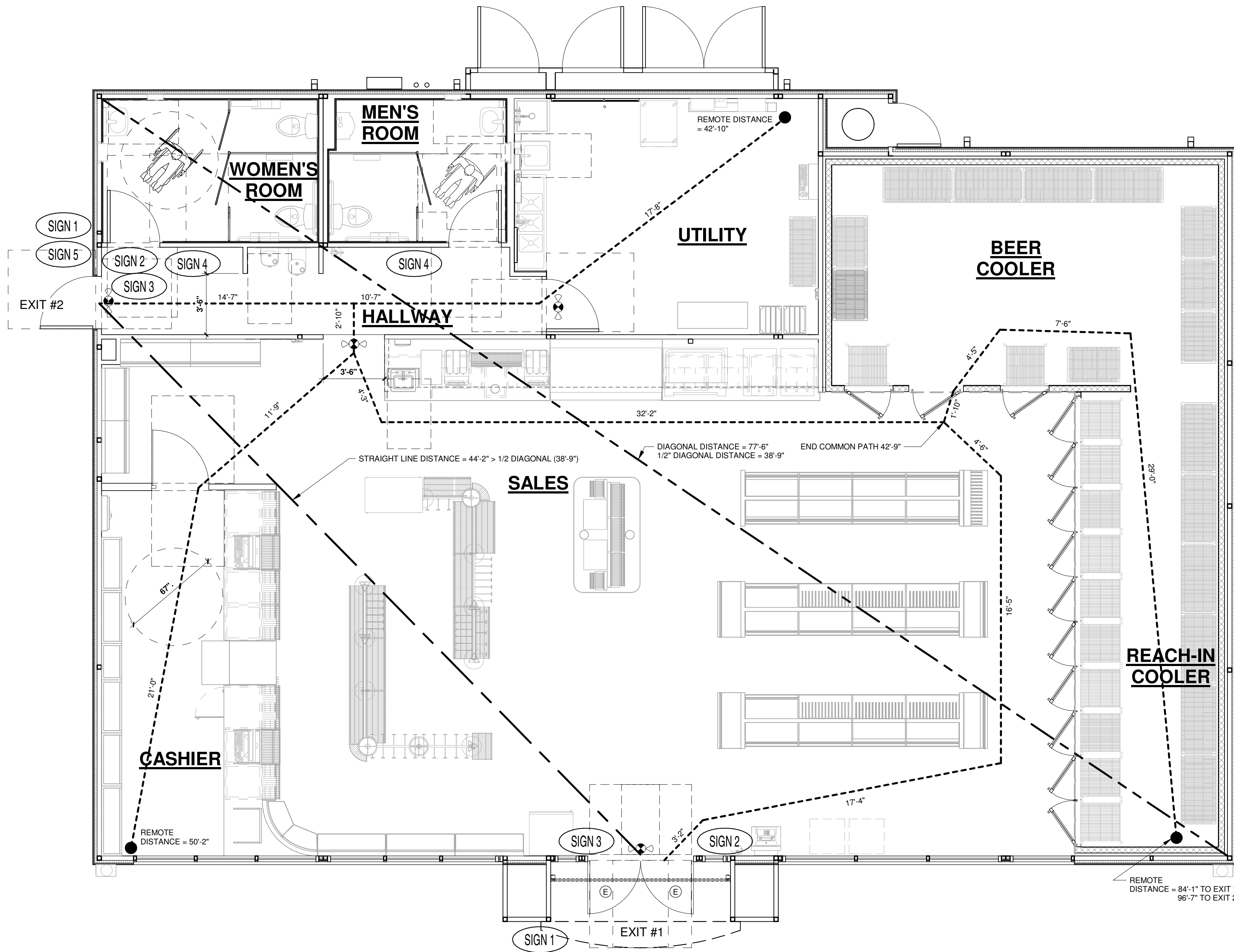


EXIT REQUIREMENTS: (NUMBER AND ARRANGEMENT OF EXITS)		COMMON PATH OF TRAVEL	
TRAVEL DISTANCE	ALLOWABLE TRAVEL DISTANCE WITHOUT SPRINKLER: 200 FT. (TABLE 1017.2) MAXIMUM PROVIDED TRAVEL DISTANCE: 96'-7"	REQUIRED COMMON PATH OF TRAVEL DISTANCE WITHOUT SPRINKLER	ACTUAL COMMON PATH OF TRAVEL DISTANCE
MINIMUM NO. OF EXITS	REQUIRED: 1 PROVIDED: 2	REQUIRED DISTANCE BETWEEN EXIT DOORS	ACTUAL STRAIGHT LINE DISTANCE BETWEEN EXITS EXIT #1 TO #2 = 52'-6"
		DISTANCE BETWEEN EXITS SHALL BE EQUAL OR NOT LESS THAN 1/2 OF THE LENGTH OF THE MAXIMUM OVERALL DIAGONAL DIMENSION OF THE BUILDING OR AREA TO BE SERVED - MEASURED IN A STRAIGHT LINE BETWEEN EXIT DOORS OR EXIT ACCESS DOORWAYS (SECTION 1007.1.1)	ACTUAL STRAIGHT LINE ACROSS PUBLIC AREA: DIAGONAL AT PUBLIC AREA = 77'-6" 1/2" DIAGONAL = 38'-9"
		CONCLUSION: 52'-6" (STRAIGHT DISTANCE) IS GREATER THAN 38'-9" (1/2 DIAGONAL DISTANCE) MEETS CODE	

GENERAL NOTES	
1. MEANS OF EGRESS SHALL BE ILLUMINATED WITH AT LEAST ONE-FOOT CANDLE AT THE FLOOR LEVEL (WALKING SURFACE). REFER TO ELECTRICAL DRAWINGS FOR ADDITIONAL INFORMATION	
LEGEND:	
-----	= ROUTE FROM THE MOST REMOTE LOCATION IN ROOM OR SPACE TO NEAREST EXIT
-----	= DIAGONAL DISTANCE OF THE BUILDING AREA
-----	= STRAIGHT LINE DISTANCE BETWEEN EXITS
●	= MOST REMOTE POINT WITHIN THIS AREA
⊗	= ILLUMINATED EXIT SIGN AND EMERGENCY LIGHT COMBO. REFER TO ELECTRICAL PLAN FOR MORE INFO.
ⓔ	= EXIT DISCHARGE LIGHT. REFER TO ELECTRICAL PLAN FOR MORE INFO.

ACCESSIBILITY SIGNS (FURNISHED AND INSTALLED BY GC):	
(SIGN 1)	INTERNATIONAL SYMBOL OF ACCESSIBILITY
(SIGN 2)	'THIS DOOR TO REMAIN UNLOCKED WHEN BUILDING IS OCCUPIED' LETTER MIN. 1" HIGH SIGN MOUNTED ABOVE DOOR
(SIGN 3)	TACTILE EXIT SIGN - SHALL COMPLY WITH SECTION 703.3 ICC/ANSI 117.1 2017
(SIGN 4)	RESTROOM SIGNAGE
(SIGN 5)	EMPLOYEES ONLY
NOTES: INSPECTOR MAY REQUIRE ADDITIONAL EXIT SIGNS AT THE TIME OF FINAL INSPECTION.	

ACCESSIBILITY NOTES:	
1. ACCESS TO THESE FACILITIES SHALL BE PROVIDED AT PRIMARY ENTRANCES.	
2. THE SLOPE OF PUBLIC WALKS SHALL NOT EXCEED MAX. - GROSS SLOPE OF 2%	
3. WALKING SURFACE SLOPING GREATER THAN 2% SHALL BE SLIP RESISTANT.	
4. PROVIDE A 60"x60" MIN. LANDING ON STRIKE SIDE OF DOOR W/ 44" MIN. WIDTH IN DIRECTION OF TRAVEL.	
5. WALKS SHALL EXTEND 24" TO THE SIDE OF THE STRIKE EDGE OF A DOOR OR GATE THAT SWINGS TOWARD THE WALK.	
6. THE SLOPE OF RAMPS SHALL NOT EXCEED 1'-0" IN 12'-0" U.N.O.	
7. RAMPS SHALL HAVE A NON-SLIP SURFACE.	
8. RAMPS SHALL BE 48" WIDE MIN.	
9. EVERY REQUIRED EXIT DOORWAY SHALL BE SIZED FOR A DOOR NOT LESS THAN 3 FT. WIDE BY NOT LESS THAN 6'-8" HIGH CAPABLE OF OPENING 90° AND MOUNTED SO THAT THE CLEAR WIDTH OF THE EXIT WAY IS 32" MIN.	
10. THRESHOLD TO BE A MAX. 1/2" ABOVE ADJACENT FINISH FLOOR.	
11. MAXIMUM EFFORT TO OPERATE INTERIOR DOORS SHALL NOT EXCEED 5 LBS. FOR OTHER SWINGING DOORS, AS WELL AS SLIDING AND FOLDING DOORS, THE DOOR LATCH SHALL RELEASE WHEN SUBJECT TO A 15 POUND FORCE, THE DOOR SHALL BE SET IN MOTION WHEN SUBJECT TO 30 POUND FORCE, THE DOOR SHALL SWING TO FULL-OPEN POSITION WHEN SUBJECT TO A 15 POUND FORCE.	
12. THE BOTTOM 10" OF ALL DOORS EXCEPT AUTOMATIC AND SLIDING DOORS SHALL HAVE A SMOOTH UNINTERRUPTED SURFACE.	
13. PROVIDE LEVER TYPE HARDWARE, PANIC BARS, PUSH - PULL ACTIVATING BARS, OR OTHER HARDWARE DESIGNED TO PROVIDE PASSAGE WITHOUT REQUIRING THE ABILITY TO GRASP THE OPENING HARDWARE. (30" TO 44" A.F.F.)	
14. EVERY EXIT DOOR SHALL BE OPENABLE FROM THE INSIDE WITHOUT THE USE OF A KEY OR SPECIAL KNOWLEDGE OR EFFORT, FLUSH OR SURFACE BOLTS SHALL BE AUTOMATIC TYPE. LOCKABLE DOORS SHALL BE PROVIDED WITH A SIGN STATING "THESE DOORS TO REMAIN UNLOCKED WHEN BUILDING IS OCCUPIED" IN MIN. 1" HIGH LETTERS.	
15. EXIT SIGNS WHERE NOTED OR REQUIRED SHALL BE WORDED "EXIT" IN LETTERS HAVING THE PRINCIPAL STROKE OF NOT LESS THAN 3/4" WIDE AND 6" HIGH AND SHALL CONFORM TO ALL APPLICABLE CODES.	
16. PROVIDE ILLUMINATED EXIT SIGNS AND EMERGENCY LIGHTING AT ALL EXIT CORRIDORS AS REQUIRED BY CODE. EMERGENCY LIGHTING SHALL PROVIDE ILLUMINATION OF ONE FOOT CANDLE AT FLOOR LEVEL.	
17. DOORS TO ACCESSIBLE SANITARY FACILITIES SHALL BE IDENTIFIED BY 1/4" THICK GEOMETRIC SYMBOLS OF CONTRASTING COLOR.	
18. POST INTERNATIONAL SYMBOL OF ACCESSIBILITY ON OR ADJACENT TO ALL ACCESSIBLE BUILDING ENTRANCES.	

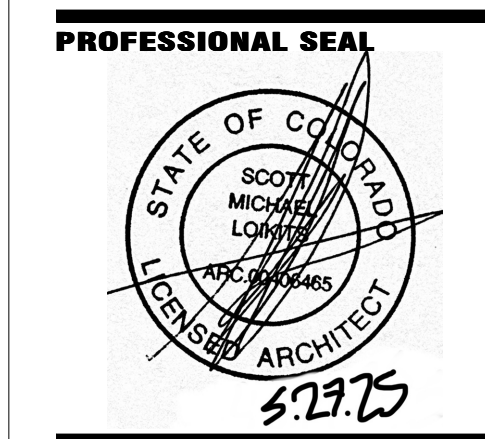


1 EGRESS/ACCESSIBILITY FLOOR PLAN
1/4" = 1'-0"



COPYRIGHT NOTICE
This drawing is the property of the above referenced Professional and is not to be used for any purpose other than the specific project and site named herein, and cannot be reproduced in any manner without the express written permission from the Professional.

ISSUE RECORD	
DATE	REV. DESCRIPTION
05/27/2025	PERMIT SUBMISSION SET



PROFESSIONAL IN CHARGE
SCOTT LOKITS
PROJECT MANAGER
JAVIER COHEN
QUALITY CONTROL
CHRIS CERBO
DRAWN BY
ST

PROJECT NAME
MURPHY USA
MURPHY OIL CONVENIENCE STORE
7825 MERIDIAN PARK DRIVE,
FALCON
COLORADO 80831

FREY MOSS STRUCTURE
1801 Rockdale Industrial Blvd.
Conyers, Georgia 30012
Voice: (800) 366-6385
Fax: (770) 483-6037
FMS JOB NUMBER
G25MU00062
FMS MODEL NUMBER
XXXXXX

PROJECT NUMBER
20230059.5

SHEET TITLE

EGRESS/ACCESSIBILITY FLOOR PLAN

SHEET NUMBER

A2

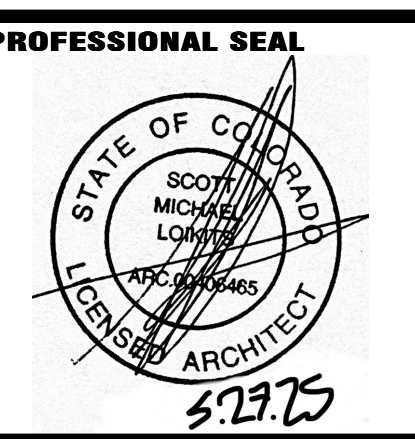
PROTO V4.0 06/28/2024
2800 SQ. FT. BUILDING



www.greenbergfarrow.com
251 West 30th Street
10th Floor
New York, New York 10001
t: 917.689.2729

COPYRIGHT NOTICE
This drawing is the property of the above referenced Professional and is not to be used for any purpose other than the specific project and site named herein, and cannot be reproduced in any manner without the express written permission from the Professional.

ISSUE RECORD	
DATE	REV. DESCRIPTION
05/21/2025	PERMIT SUBMISSION SET



PROFESSIONAL IN CHARGE
SCOTT LOMITS

PROJECT MANAGER
JAVIER COHEN

QUALITY CONTROL
CHRIS CERBO

DRAWN BY
ST

PROJECT NAME
MURPHY USA

MURPHY STAR CONVENIENCE STORE

7825 MERIDIAN PARK DRIVE, FALCON COLORADO 80831



1801 Rockdale Industrial Blvd.
Conyers, Georgia 30012
Voice: (800) 366-6385
Fax: (770) 463-6037

FMS JOB NUMBER
G25MU00062

FMS MODEL NUMBER
XXXXXX

PROJECT NUMBER
20230059.5

SHEET TITLE

FLOOR PLAN

SHEET NUMBER

E3

PROTO V4.0 06/28/2024

2800 SQ. FT. BUILDING

EQUIPMENT SCHEDULE			
WT	ITEM	DESCRIPTION	FURNISH / INSTALL
1	LAVATORY - ADA COMPLIANT	LAVATORY - AMERICAN STANDARD DECLYN 19" x 17" WALL MOUNTED OR EQUAL W/ NO BACK-SPLASH FAUCET - ZURN #ZURN15-FS SENSOR ACTIVATED, CENTERSET ON DRAIN W/ 0.5 GPM AERATOR W/ ASSE 1070 APPROVED MIXING VALVE - SLOAN #MIX-135-A	FMP / FMP
2	WATER CLOSET - ADA COMPLIANT	WATER CLOSET - ZURN #ZURN45-55 ELONGATED BOWL, TANK WITH LOCKING LID - ZURN #ZURN45-55TKINVL	FMP / FMP
2A	URINAL	ZURN #ZURN45-55 ELONGATED BOWL, TANK WITH LOCKING LID (0.5 GPM) MODEL # ZURN45-55-1 LONG LIFE BATTERIES	FMP / FMP
3	MIRROR	#8-1556 18" x 36" FRAMELESS (OR EQUAL) 40" AFF TO BOTTOM OF REFLECTIVE SURFACE	FMS / FMS
4	SOAP DISPENSER	GP 52057	OWNER / GC
5	TOILET TISSUE DISPENSER	TSN #5737013 STUB TISSUE DISPENSER, 9" ROLL	FMS / FMS
6	42" GRAB BAR	1 1/2" ROUND GRAB BAR, 34" A.F.F. TO CENTER OF BAR	FMS / FMS
7	36" GRAB BAR	1 1/2" ROUND GRAB BAR, 34" A.F.F. TO CENTER OF BAR	FMS / FMS
8	18" GRAB BAR	1 1/2" ROUND GRAB BAR	FMS / FMS
9	ELECTRIC HAND DRYER	XLERATOR MODEL # XL-BW, THERMOSET RESIN W/ ADA RECESS KIT	FMS / FMP
10	SERVICE MOP SINK	FIAT #MS2424 ON FLOOR MOP SINK W/ FIAT #830AA SERVICE SINK FAUCET @ 38" AFF	FMP / FMP
11	WATER FILTERS	3M WATER FILTRATION SYSTEM AQUAPURE DP290	FMP / FMP
11A	ECO3ICE	ECO3ICE - ANTIMICROBIAL ICE PROTECTION, MODEL NO ECO3ICE X4 APPROXIMATELY 3.1' X 3.6' W/ 8" H/41, 100 240V, 50/60 HZ FOR PROVIDED 24V, 1.25A TRANSFORMER (INTEGRATED INTO POWER CORD), 3/8" OD PUSH/PULL WATER LINE CONNECTION, TO BE INSTALLED IN THE WATER SUPPLY LINE BETWEEN FILTRATION SYSTEM AND ICE MACHINE	EQUIPMENT INSTALLER / EQUIPMENT INSTALLER
12	3-COMP SINK	ELKAY SSP - #3C10X14-2-16X-66 GREENWORLD W/ ZURN, #ZRN0X0-AF-PR1, PRE-RINSE HOSE ASSEMBLY	FMP / FMP
13	WATER HEATER	RHEEM #E20-12-G 20 GALLON, 240V SINGLE PHASE, 12000 WATTS WITH WATTS #PLT-5, 2.1 GALLON EXPANSION TANK, 98% MAXIMUM RECOVERY EFFICIENCY	FMP / FMP
14	HANK SINK	ADVANCED TABCO D1-1-35 DROP-IN SINK WITH ASSE 1070 APPROVED MIXING VALVE - SLOAN #MIX-135-A @ BEVERAGE COUNTER WITH ADA COMPLIANT HANDLES	OWNER / GC
14A	HAND SINK	@ UTILITY ROOM WITH SPLASH MOUNT GOOSENECK FAUCET & BASKET TYPE DRAIN	FMP / FMP
15	DRINKING FOUNTAIN	ADA WALL MOUNTED DRINKING FOUNTAINS - SEE PLUMBING DRAWINGS	FMP / FMP
16	PURSE SHELF	GAMMO MS SHELF MODEL NO. MS-18 OR EQUAL, 18" L, 4" W X 1 1/4" H WITH COAT HOOK BELOW (SEE INTERIOR RESTROOM ELEVATION)	FMS / FMS
17	COFFEE BREWER	BUNN FAST CUP, BEAN-TO-CUP BTO FAST CUP	EQUIPMENT INSTALLER / EQUIPMENT INSTALLER
18	CAPPUCCINO MACHINE	CURTIS G3 PRIMO CAPPUCCINO DISPENSING SYSTEM MODEL PCG73 (3 STATION DISPENSER) 14 1/4" W X 23 63" D X 34.75" H 120/60HZ 1800W/15 AMP NEMA 5-15P, 1/4" FLARE WATER INLET	EQUIPMENT INSTALLER / EQUIPMENT INSTALLER
20A	COUNTER TOP MERCHANDISER	12" COUNTER TOP MERCHANDISER	EQUIPMENT INSTALLER / EQUIPMENT INSTALLER
20B	COUNTER TOP MERCHANDISER	24" COUNTER TOP MERCHANDISER	EQUIPMENT INSTALLER / EQUIPMENT INSTALLER
20C	COUNTER TOP MERCHANDISER	36" COUNTER TOP MERCHANDISER	EQUIPMENT INSTALLER / EQUIPMENT INSTALLER
21A	48" CIGARETTE RACK	(11) 4" PACK PUSHER SHELVES, (1) ENHANCED LIT HEADER (2) BLACKOUT DOORS	EQUIPMENT INSTALLER / EQUIPMENT INSTALLER
21B	36-38" CIGARETTE RACK	(6) 3" STORAGE SHELVES, (1) 3" ENHANCED LIT HEADER, (2) 18" BLACKOUT DOORS	EQUIPMENT INSTALLER / EQUIPMENT INSTALLER
21C	25" E-CIG RACK	(10) 2" SOLID TOP PUSHER SHELVES, (1) 2" ENHANCED LIT HEADER	EQUIPMENT INSTALLER / EQUIPMENT INSTALLER
22	OPEN AIR COOLER	BEVERAGE AIR OPEN AIR CURTAIN MERCHANDISER MODEL BZ13-1-B WITH PRICE TAG MODELING, 4 SHELVES 115V/60/1.1/2 HP 15 AMP DEDICATED OUTLET 30"W X 32 3/4"D X 54 3/8"H	EQUIPMENT INSTALLER / EQUIPMENT INSTALLER
23	CARBONATOR	MICRO-CARBONATOR CARBONATOR, E400397, 115V 60HZ, 180 OUNCE SS TANK IN CABINET BELOW	EQUIPMENT INSTALLER / EQUIPMENT INSTALLER
24	ICEE MACHINE	VIPER ELITE HIGH INPUT 3B ICEE MACHINE, 22.75" W X 32.5"D X 37"H, 230V 4-15V 60HZ, 30A, SINGLE PHASE, NEMA 1L3-3P MOLDED PLUG CONNECTION, INCLUDE WITH BUCK BOOST TRANSFORMER ACCESSORY	EQUIPMENT INSTALLER / EQUIPMENT INSTALLER
25	LANCHER TWIN POUR MACHINE	LANCER TWIN POUR MACHINE W/ ICE MACHINE ADAPTER	EQUIPMENT INSTALLER / EQUIPMENT INSTALLER
26	ICE MACHINE	HOSHIZAKI KM-S20MAJ (AIR COOLED) REMOTE TOP MOUNT ICE MACHINE 115V / 60HZ / 1, 10.6AMP	EQUIPMENT INSTALLER / EQUIPMENT INSTALLER
27	FIRE EXTINGUISHER	WALL HUNG FIRE EXTINGUISHER #10 CLASS ABC WITH UL RATING 4A-60BC. LOCATION TO BE CONFIRMED IN FIELD WITH LOCAL FIRE INSPECTOR.	OWNER / GC
28	FIRE EXTINGUISHER	WALL HUNG FIRE EXTINGUISHER IN CABINET, ANSUL C20 #429017	OWNER / GC
30	LANCER TWIN POUR BIB RACK	5 STACKED INCLINED - 48"D X 18"D X 75"H	EQUIPMENT INSTALLER / EQUIPMENT INSTALLER
31	ICEE BIB RACK	3 STACKED X ONE (1) BOX WIDE INCLINED 15"W X 19"D X 12"H EACH	EQUIPMENT INSTALLER / EQUIPMENT INSTALLER
32	WATER BOOSTER	MCCANN'S WATER BOOSTER, 115V 60HZ, 2-GALLON SS TANK, 3/8" INLET/OUTLET FITTINGS, MODEL #16-2171, 14.5"W X 14.0"D X 9.5"H	EQUIPMENT INSTALLER / EQUIPMENT INSTALLER
33	PERMIT CASE	ACCO BRANDS USA QUARTET CLASSIC ENCLOSED CORK BULLETIN BOARD 36" X 24" ITEM #920108	OWNER / GC
34	FOCUS WIRE SHELVING	METRO SUPER ELECTRA SHELF 24" D X 48" W X 78" H	EQUIPMENT INSTALLER / EQUIPMENT INSTALLER
34A	FOCUS WIRE SHELVING	METRO SUPER ELECTRA SHELF 18" D X 48" W X 72" H	EQUIPMENT INSTALLER / EQUIPMENT INSTALLER
34B	FOCUS WIRE SHELVING	TECHNIBILT COOLER SHELF 24" D X 36" W X 78" H	EQUIPMENT INSTALLER / EQUIPMENT INSTALLER
34C	FOCUS WIRE SHELVING	TECHNIBILT COOLER SHELF 24" D X 48" W X 78" H	EQUIPMENT INSTALLER / EQUIPMENT INSTALLER
35	UPRIGHT FREEZER	TRUE GDM - 26F	EQUIPMENT INSTALLER / EQUIPMENT INSTALLER
36	REFRIGERATOR	TURBO AIR MODEL #M3F24-2-N, SERVING DOOR-2, 21.7 CU.F.T., 1/2 HP, 4.4 AMPS, 28 3/4" L X 30 3/4" D X 78" H	EQUIPMENT INSTALLER / EQUIPMENT INSTALLER
37	MICROWAVE	SHARP R-21 LVF, R-21 LTF MEDIUM DUTY COMMERCIAL MICROWAVE OVENS	EQUIPMENT INSTALLER / EQUIPMENT INSTALLER
40	SAFE	TIDEL - SERIES 4 + TUBE VEND, 22"W X 18"-6"D X 30 3/4"H	EQUIPMENT INSTALLER / GC
41	LOTTERY UNIT	SCHAFER SYSTEM INC. 35-38 GAME ALL IN ONE UNIT, 27.5"W X 23"D X 32"H WITH LIGHTS PLUG INTO EXISTING RECEPT IN SALES COUNTER	EQUIPMENT INSTALLER / EQUIPMENT INSTALLER
42	PAPER TOWEL DISPENSER	GP PRO UNIVERSAL PUSH-PADDOLE, MODEL #999592	OWNER / GC
45	ATM	MONIMAX, 5000 CE / 5300 XP	EQUIPMENT INSTALLER / EQUIPMENT INSTALLER
46	SANDWICH CASE	JISI 6" GRAB-N-GO, MODEL # MP-PROD-MD036-80-001	EQUIPMENT INSTALLER / EQUIPMENT INSTALLER
47	GLASS DOOR MERCHANDISER	SLIDE DOOR FAST LANE PASS-THRU REFRIGERATOR BY TRUE MANUFACTURING CO. INC., MODEL-GDM-33CPT-54-HC-LD, 39 1/2"W X 24 1/8"D X 54 1/8"H	EQUIPMENT INSTALLER / EQUIPMENT INSTALLER
48	PAPER TOWEL DISPENSER / WASTE RECEPTACLE	BOBRICK #8-369 RECESSED PAPER TOWEL DISPENSER AND WASTE RECEPTACLE	FMS / FMS

SECURITY DOOR SCHEDULE			
MARK	SIZE	DESCRIPTION	QTY.
SD1	10'-3" W x 9'-1 1/2" H	- MODEL EX667 BY WHEATBELT WITH PUSH-PULL MANUAL SYSTEM AND W/ SURFACE MOUNTED GUIDE RAILS AND CLEAR ANODIZED ALUMINUM SLATS - SHUTTER TO REMAIN LOCKED IN OPEN POSITION DURING HOURS OF OPERATION - 12" SQUARE BOX (WHITE)	1

GLASS SCHEDULE				ALL GLASS SUPPLIED AND INSTALLED BY FMS	
MARK	SIZE	DESCRIPTION		QTY.	
		WIDTH	HEIGHT		
G1	3'-3 5/8" x 5'-0"			3	
G2	3'-0 3/8" x 5'-0"			3	
G3	3'-11 3/8" x 5'-0"			3	1" TEMPERED, INSULATED GLASS W/ 2" X 4" CLEAR ANODIZED ALUMINUM SASH STOREFRONT SYSTEM TRIFAB 451T BY KAWNEER GUARDIAN (LDCASTLE)
G4	3'-4" x 5'-0"			1	SOLARBAN 60 ON SOLARGRAY LOW-E U-0.27 SHGC=0.25, 14-35 (OR EQUAL)
G5	1'-0 3/8" x 8'-4"			2	
G6	6'-0 1/2" x 1'-4"			1	

NOTES

- ALL PULL DIMENSIONS ARE TAKEN FROM OUTSIDE OF THE STEEL BASE FRAME OF THE BUILDING.
- CASHIER COUNTERS, P.O.S. RACKS AND COFFEE COUNTERS TO BE FURNISHED AND INSTALLED BY CABINET SUPPLIER.
- D1 DOORS TO REMAIN UNLOCKED WHEN THE BUILDING IS OCCUPIED. OWNER TO PROVIDE SIGNAGE ON SITE.
- TOILETS, URINALS, HAND SINKS, 3 COMPARTMENT SINKS, MOP SINK, PREP SINKS AND PERMANENT COUNTERS/CABINETS MUST BE SEALED TO FLOORS AND WALLS WITH A SILICONE CAULK SEALANT.
- ACM BOTTOM TRIM TO BE CUT BACK AT DOOR THRESHOLD AND STOREFRONT FRAMING SILLS THAT MEET SITE CONCRETE SURFACES SO THAT THE SITE CONCRETE SURFACES MAY BE POURED BELOW THRESHOLD AND STOREFRONT WINDOW SILLS.

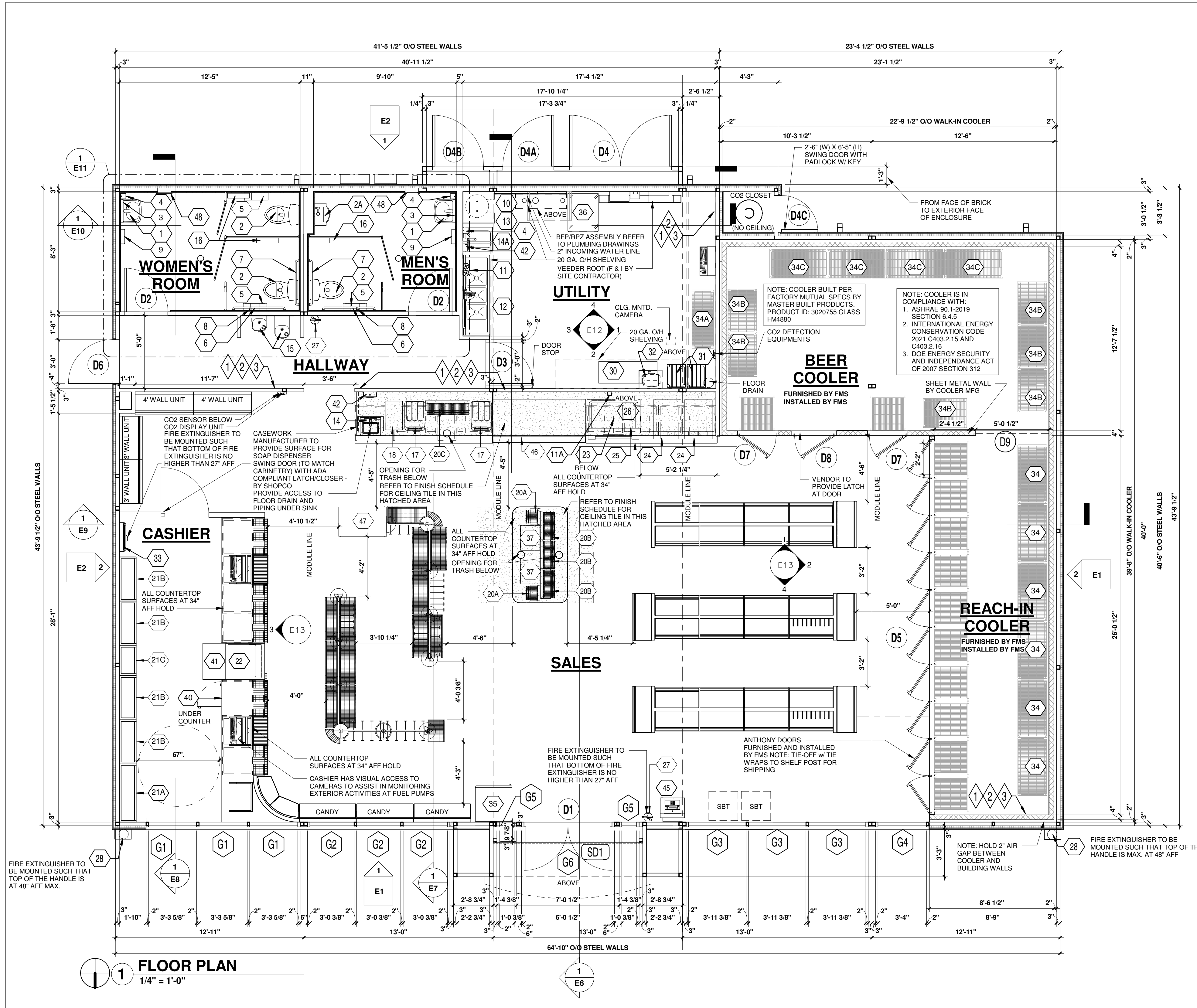
1 STATE LABEL LOCATION
2 MFG. DATA PLATE LOCATION
3 3RD PARTY INSPECTION LABEL LOCATIONS

CO2 ALARM AND VENTING; FINAL LOCATIONS BY CO2 VENDOR

CO2 SENTRY - AIRGAS -
AIR GAS TO SUPPLY AND INSTALL VENT/EXHAUST LINE FROM BIB RACK AREA TO CO2 CLOSET, AEROSOLIC CO2 MONITOR, PRIMARY: MODEL RVL01-17, SECONDARY: MODEL RVL02-17 SOFT DRINK VENDOR TO MANIFOLD ALL THE SOFT DRINK BIBS VENTS/EXHAUST TOGETHER AND ICEE VENDOR WILL MANIFOLD ICEE BIBS VENT/EXHAUST AND TIE INTO THE SOFT DRINK VENDORS LINE. ALL VENT/EXHAUST LINES TO BE SECURELY ATTACHED AND AT CO2 CLOSET LINES TO BE TURNED DOWN TO PREVENT WATER FROM ENTERING LINES.

NOTE: COOLER BUILT PER FACTORY MUTUAL SPECS BY MASTER BUILT PRODUCTS. PRODUCT ID: 3020755 CLASS FMH880
CO2 DETECTION EQUIPMENTS

NOTE: COOLER IS IN COMPLIANCE WITH:
1. ASHRAE 90.1-2019 SECTION 6.4.5
2. INTERNATIONAL ENERGY CONSERVATION CODE 2021 C403.2.1.5 AND C403.2.1.6
3. DOE ENERGY SECURITY AND INDEPENDENCE ACT OF 2007 SECTION 312



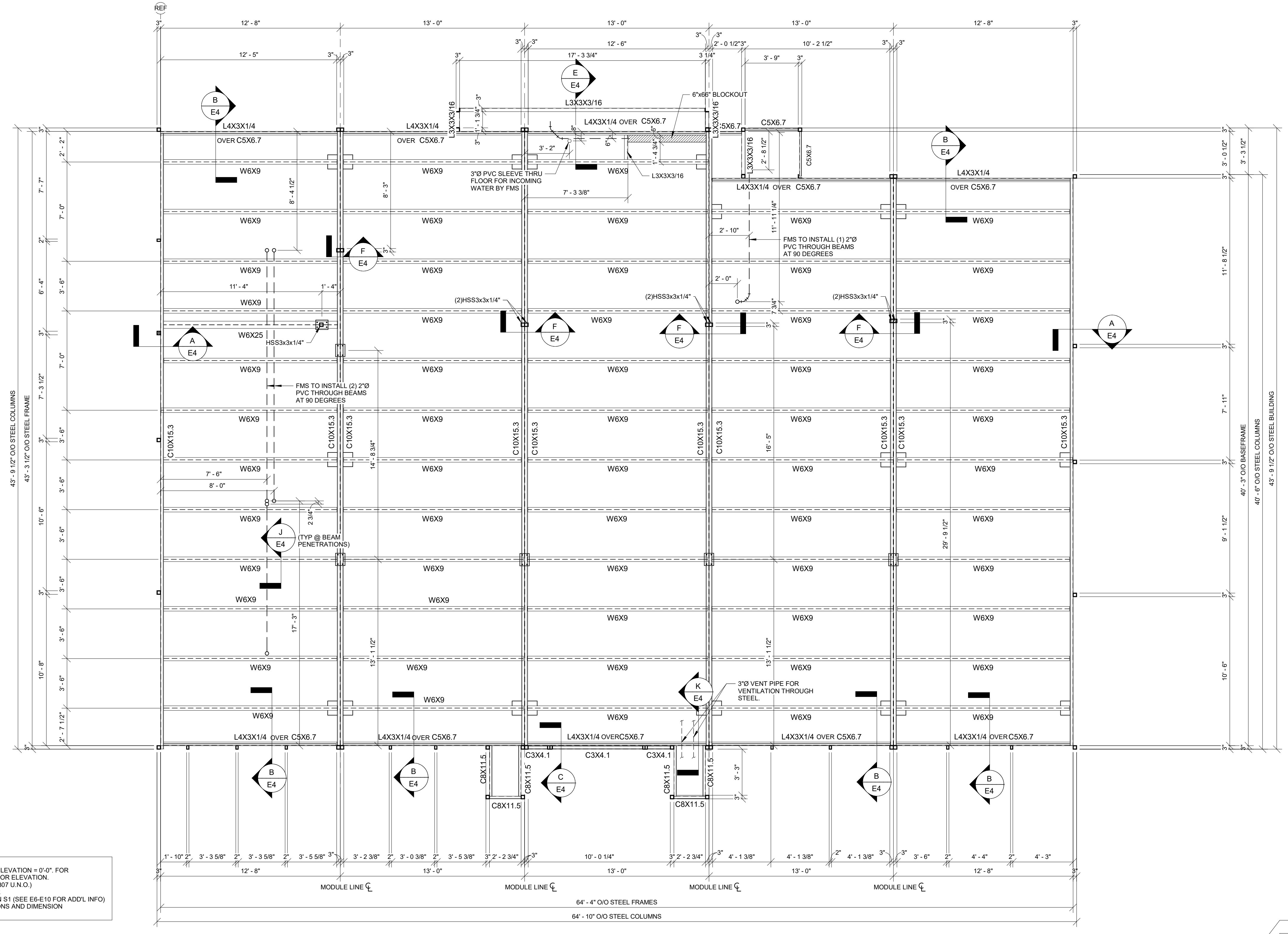
ROOM FINISH SCHEDULE			
ROOM	FLOORING	INTERIOR WALLS	CEILING
CASHIER	DAL TILE "BARITONE BROWN" #CH24 24" X 24" SQ. SATIN FINISH W/ 1/4" GROUT #185 NEW TAUPPE BY CUSTOM BUILDING PRODUCTS WITH JOHNSONITE 4" RUBBER COVE BASE #69 STERLING SILVER	20 GA. STEEL PRE-FINISHED SMOOTH WHITE ACRYLIC PANELS	USG - RADAR #2310 (CLASS-A FIRE RATED) IN SUSPENDED CEILING (FLAME SPREAD INDEX-25, SMOKE DEVELOPED-50)
RESTROOMS (WOMEN'S, MEN'S)	MARAZZI COLOR BODY PORCELAIN RIFLESSI DE LEGNO, USG, 12"x24" WALNUT TILE W/ LATICRETE SPECTRALOCK GROUT #66 CHESTNUT BROWN	DAL TILE MODEL 'CS21 UMBER SQUARE MATTE' 12" X 12" PORCELAIN TILE EPOXY GROUT TO UNDERSIDE OF CEILING - #185 NEW TAUPPE	WHITE ACRYLIC PANELS 20 GA. STEEL PRE-FINISHED SMOOTH (BY OTHERS) (FLAME SPREAD INDEX-0, SMOKE DEVELOPED-85)
HALLWAY	DAL TILE "BARITONE BROWN" #CH24 24" X 24" SQ. SATIN FINISH W/ 1/4" GROUT #185 NEW TAUPPE BY CUSTOM BUILDING PRODUCTS WITH JOHNSONITE 4" RUBBER COVE BASE #69 STERLING SILVER	20 GA. STEEL PRE-FINISHED SMOOTH WHITE ACRYLIC PANEL	USG - RADAR #2310 (CLASS-A FIRE RATED) IN SUSPENDED CEILING (FLAME SPREAD INDEX-25, SMOKE DEVELOPED-50)
UTILITY	SW ARMORSEAL 1000 HS (B67 A 2001 AND B67 V 2002) DARK GREY SEALER CONCRETE (OR EQUAL) WITH JOHNSONITE 4" RUBBER COVE BASE #69 STERLING SILVER	20 GA. STEEL PRE-FINISHED EMBOSSED WHITE ACRYLIC PANELS	SHEETROCK BRAND CLIMPLUS LAY-IN CEILING PANEL, VINYL #3270 IN DONN BRAND CE SUSPENDED CEILING 2" X 4" LAY-IN CEILING TILE W/WHITE GRID (FLAME SPREAD INDEX-0, SMOKE DEVELOPED-50)
SALES	DAL TILE "BARITONE BROWN" #CH24 24" X 24" SQ. SATIN FINISH W/ 1/4" GROUT #185 NEW TAUPPE BY CUSTOM BUILDING PRODUCTS WITH JOHNSONITE 4" RUBBER COVE BASE #69 STERLING SILVER	20 GA. STEEL PRE-FINISHED SMOOTH WHITE ACRYLIC PANEL	USG - RADAR #2310 (CLASS-A FIRE RATED) IN SUSPENDED CEILING (FLAME SPREAD INDEX-25, SMOKE DEVELOPED-50)
BEER COOLER	DAL TILE "BARITONE BROWN" #CH24 24" X 24" SQ. SATIN FINISH W/ GROUT #185 NEW TAUPPE BY CUSTOM BUILDING PRODUCTS WITH JOHNSONITE 4" RUBBER COVE BASE, COLOR: BLACK.	20 GA. STEEL PRE-FINISHED EMBOSSED WHITE ACRYLIC PANELS. (BY COOLER MANUFACTURER) (FLAME SPREAD INDEX-0, SMOKE DEVELOPED-85)	WHITE ACRYLIC PANELS 20 GA. STEEL PRE-FINISHED EMBOSSED (BY COOLER MANUFACTURER) (FLAME SPREAD INDEX-0, SMOKE DEVELOPED-85)
REACH-IN COOLER	SW ARMORSEAL 1000 HS (B67 A 2001 AND B67 V 2002) DARK GREY SEALER CONCRETE (OR EQUAL) WITH JOHNSONITE 4" RUBBER COVE BASE, COLOR: BLACK.	20 GA. STEEL PRE-FINISHED EMBOSSED WHITE ACRYLIC PANELS. (BY COOLER MANUFACTURER) (FLAME SPREAD INDEX-0, SMOKE DEVELOPED-85)	WHITE ACRYLIC PANELS 20 GA. STEEL PRE-FINISHED EMBOSSED (BY COOLER MANUFACTURER) (FLAME SPREAD INDEX-0, SMOKE DEVELOPED-85)

DOOR SCHEDULE			
MARK	SIZE		DESCRIPTION
	WIDTH	HEIGHT	
D1	3'-0"	7'-0"	3070 INSULATED WIDE STILE ALUMINUM CLEAR ANODIZED FINISH WITH GRAY TINTED 1" SAFETY GLASS AND 10" HIGH BOTTOM RAIL, 4" X 1 3/4" ALUMINUM CLEAR ANODIZED FINISH DOOR FRAME W/ ROUND PUSH BAR (INTERIOR) AND PULL HANDLE (EXTERIOR), ADAMS RITE #1859-A-905 LOCK W/ BEST T-SERIES DEADBOLT 1 875 EXTERIOR W/ ADAMS RITE 4089 EXIT INDICATOR 80-0186-14 INTERIOR AND 4015 THRESHOLD BOLT 1 THREE-POINT DEADBOLT LOCKING SYSTEM OR EQUAL INTERIOR. PEMKO #228A HALF SADDLE ALUMINUM THRESHOLD 1/2" X 36" X 5", 1 1/2 PAPER 4 1/2" X 4 1/2" B.B. BUTT HINGES W/ N.R.P., PUSH SIDE MOUNT CLOSURE - LCN #4021 & 4020-18 DROP PLATE (CLEAR FINISH), DOOR SWEEP @ BOTTOM, PAINT INTERIOR WHITE TO MATCH, & EXTERIOR TO MATCH (STORE FRONT GLASS DOOR WITH (G2) GLASS ABOVE DOOR) W/ WIND CHAINS, BOTTOM RAIL OF DOOR TO BE 10" HIGH
D2	3'-0"	7'-0"	3070 SOLID WOOD DOOR W/ FRAME - PAINT GRADE - KEYPAD LOOKSET SIMPLEX 5000 MODEL 5021-SX-WL-26D-41, 1 1/2 PAPER 4 1/2" X 4 1/2" B.B. PRIMED BUTT HINGES W/ N.R.P., 10"x2"-8" STAINLESS STEEL KICK PLATE ON BOTH SIDES, FULL LENGTH ASTRAGAL, PAINTED SW SEMI-GLOSS WHITE ON BOTH SIDES.
D3	3'-0"	7'-0"	3070 SOLID WOOD DOOR W/ FRAME - PAINT GRADE - KEYPAD LOOKSET SIMPLEX 5000 MODEL 5021-SX-WL-26D-41, 1 1/2 PAPER 4 1/2" X 4 1/2" B.B. PRIMED BUTT HINGES W/ N.R.P., 10"x2"-8" STAINLESS STEEL KICK PLATE ON BOTH SIDES, PAINTED SW SEMI-GLOSS WHITE ON BOTH SIDES. PROVIDE ADA COMPLIANT LEVEL HANDLE ON BOTH SIDE OF DOOR.
D4	3'-6"	8'-0"	(3880) 1 3/4" HOLLOW METAL DOORS - BEST LOCK #8377K CS TUBULAR DEADBOLT (ON ACTIVE LEAF ONLY) SLIDE BOLT @ BOTTOM (INACTIVE LEAF ONLY), SPRING LOADED BARREL BOLT @ TOP & BOTTOM (ON INACTIVE LEAF) (2) - 6" CONTINUOUS 1 1/2" X 1 1/2" STAINLESS STEEL HINGES (ONE PER DOOR), WIND CHAINS, PAINT INTERIOR AND EXTERIOR TO MATCH, & EXTERIOR TO MATCH. MODEL-H-SERIES FLUSH SINGLE DOOR W/ FRAME BY STEELCRAFT.
D4A/D4B	3'-6"	8'-0"	(3880) 1 3/4" HOLLOW METAL DOOR, SEE D4 ABOVE FOR SPECIFICATIONS & HARDWARE W/ WIND CHAINS, EXTERIOR GRADE WEATHER SWEEP TO SEAL DOOR GAP TO THRESHOLD. PROVIDE PEMKO 3151CN OR 321CN DOOR SWEEP OR EQUAL TO ACCOMMODATE DOOR WIDTH.
D4C	2'-6"	6'-0"	(2860) 1 3/4" HOLLOW METAL DOOR, SEE D4 ABOVE FOR SPECIFICATIONS & HARDWARE W/ WIND CHAINS, EXTERIOR GRADE WEATHER SWEEP TO SEAL DOOR GAP TO THRESHOLD. PROVIDE PEMKO 3151CN OR 321CN DOOR SWEEP OR EQUAL TO ACCOMMODATE DOOR WIDTH.
D5	2'-6"	6'-7 1/2"	CDS DOORS (BLACK), DOORS 5, 7 & 8 MUST MATCH. FURNISHED & INSTALLED BY FMS.
D6	3'-0"	7'-0"	3070 INSULATED METAL DOOR W/ FRAME - CONCEALED PANIC DEVICE #BLCH-TA1R-M10-A7-B2-630 FIVE POINT BY SECURITECH (OR EQUAL), 1 1/2 PAPER 4 1/2" X 4 1/2" B.B. PRIMED BUTT HINGES W/ N.R.P., LCN #1461 CLEAR FINISH, PUSH SIDE MOUNT CLOSURE, OFFSET ALUMINUM THRESHOLD, DOOR SWEEP @ BOTTOM, PAINT INTERIOR WHITE TO MATCH, & EXTERIOR TO MATCH.
D7	2'-6"	6'-7 1/2"	CDS DOORS (BLACK), DOORS 5, 7 & 8 MUST MATCH. FURNISHED & INSTALLED BY FMS.
D8	3'-0"	7'-0"	CDS DOORS (BLACK), DOORS 5, 7 & 8 MUST MATCH. FURNISHED & INSTALLED BY FMS.
D9	5'-0"	9'-0"	PLASTIC COOLER STRIP CURTAIN BY EQUIPMENT INSTALLER

NOTE: THE CEILING GRID/TILES ARE TO BE INSTALLED PER ASTM C635, C636 AND E589 IN ACCORDANCE WITH THE SEISMIC DESIGN CATEGORY LISTED ON DWG S1.

NOTE: ALL CYLINDERS TO BE BEST LOCK CYLINDERS.

ISSUE RECORD	
DATE	REV. DESCRIPTION
06/27/2025	PERMIT SUBMISSION SET



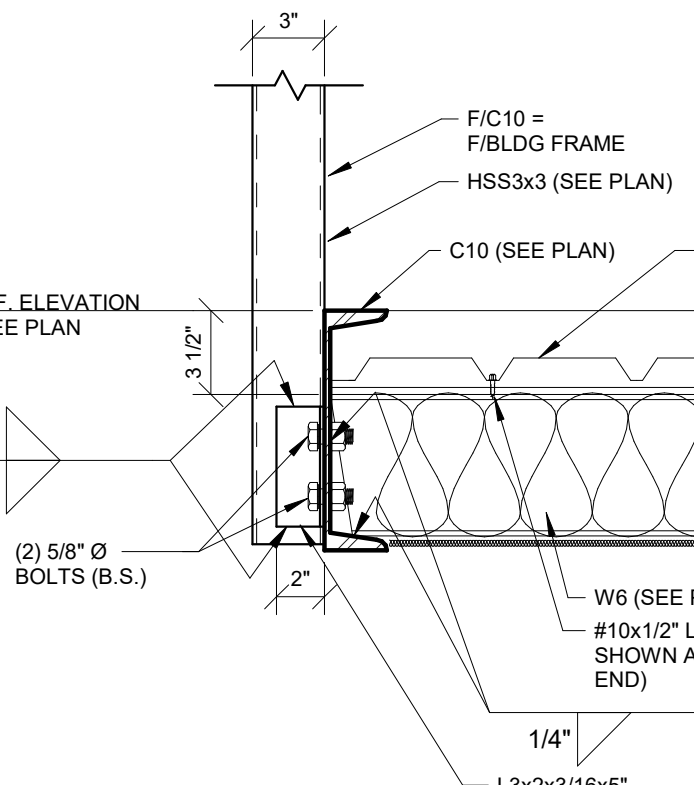
- DENOTES HSS LIFTING COLUMN
- DENOTES HSS 3 x 3 x 3/16" COLUMN
- DENOTES TS 3 x 3 x 14GA COLUMN
- DENOTES TS 3 x 2 x 14GA COLUMN
- DENOTES STL ANGLE 3 x 3 x 3/16"
- ⊥ DENOTES BASE LIFTING POINT
- DENOTES WHEEL LOCATION

NOTE: ALL PULL DIMENSIONS ARE FROM FACE OF BLDG FRAME

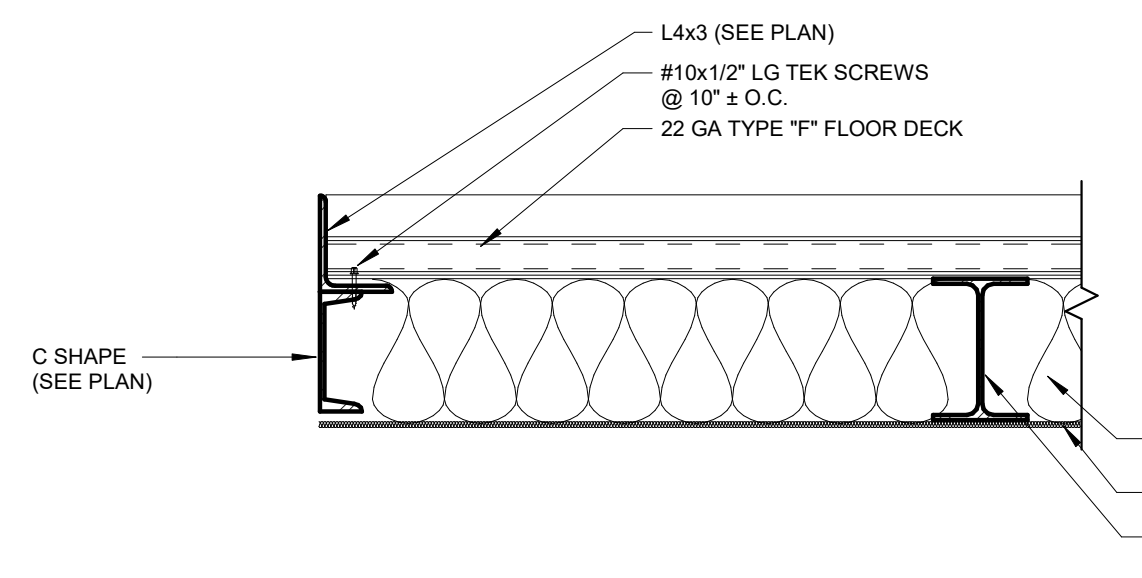
- FRAMING PLAN NOTES**
- ALL ELEVATIONS REFERENCED FROM FINISH FLOOR ELEVATION = 0'-0". FOR REFERENCE ONLY. SEE CIVIL FOR ACTUAL FINISH FLOOR ELEVATION.
 - BOLTS SHALL BE 5/8"x1 1/2" LG (M. BOLTS) (GRADE A307 U.N.O.)
 - (B.S.) - PROVIDED & INSTALLED BY BUILDING SUPPLIER
 - FOR WALL PANEL REQUIREMENTS, SEE SCHEDULE ON S1 (SEE E6-E10 FOR ADD'L INFO)
 - COORDINATE ALL BLOCKOUT AND PLUMBING LOCATIONS AND DIMENSION INFORMATION WITH DRAWING "P1".

1 FLOOR FRAMING PLAN
 1/4" = 1'-0"

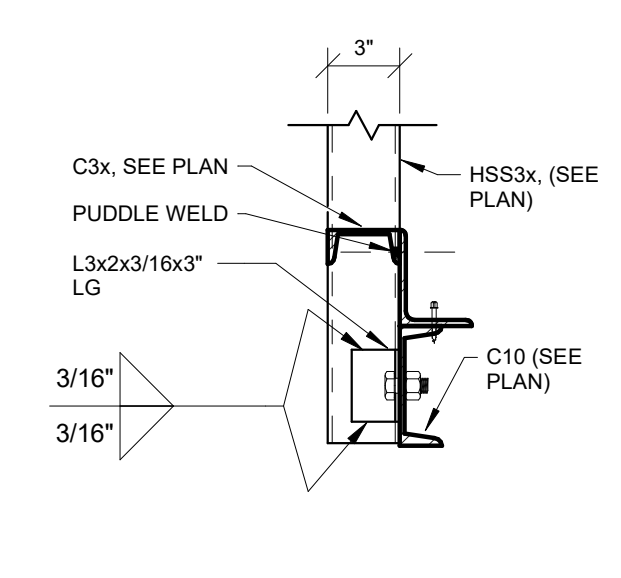
FRONT OF BUILDING



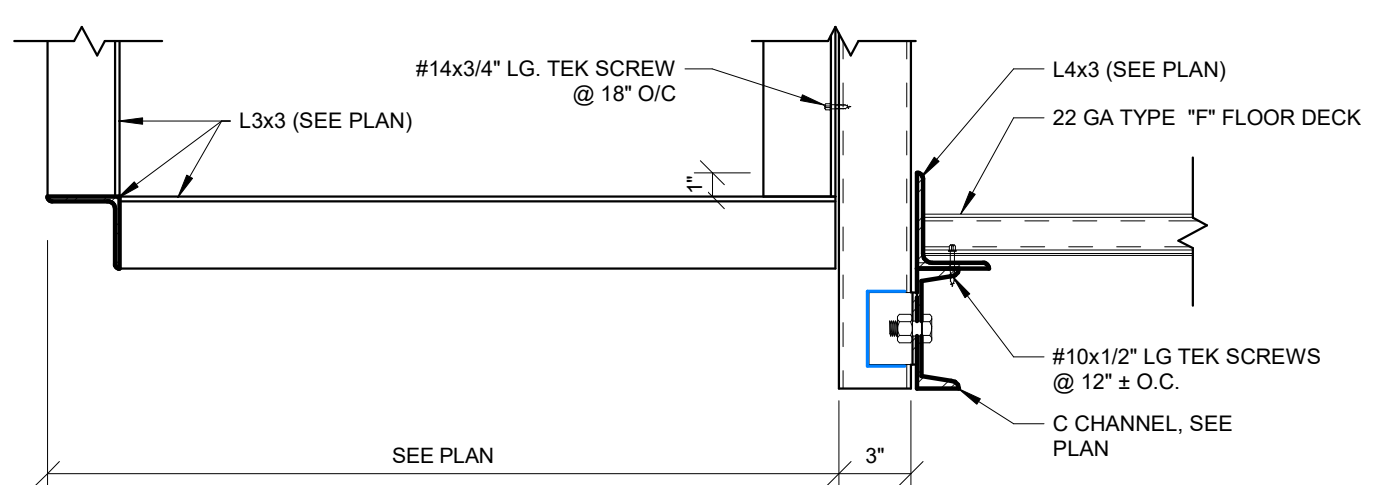
A FLOOR SECTION A
 1 1/2" = 1'-0"



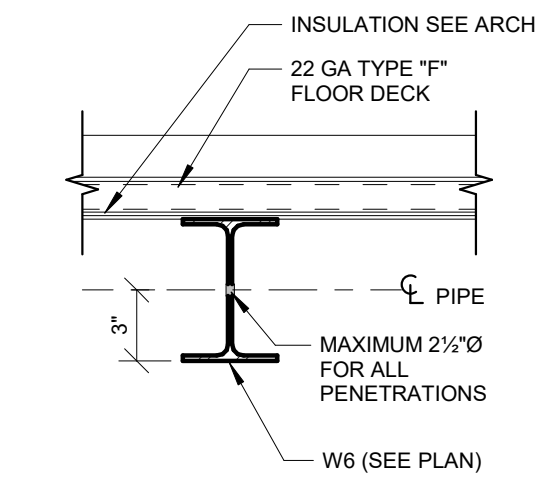
B FLOOR SECTION B
 1 1/2" = 1'-0"



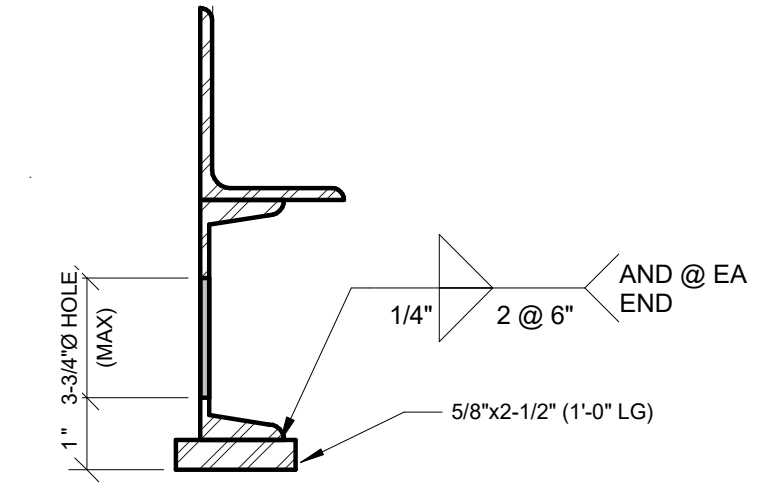
C FLOOR SECTION C
 1 1/2" = 1'-0"



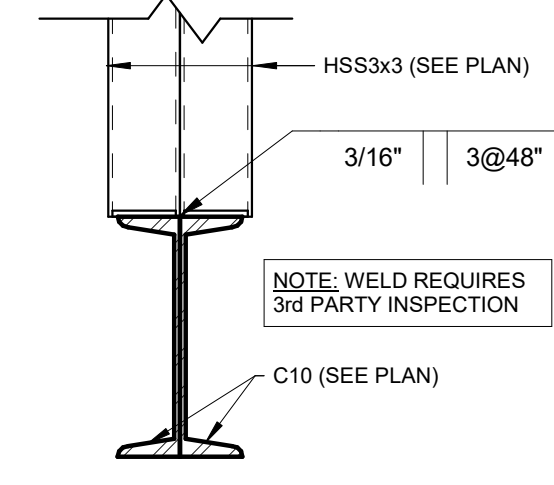
E FLOOR SECTION E
 1 1/2" = 1'-0"



J FLOOR SECTION J
 1 1/2" = 1'-0"



K HOLE PENETRATION DETAIL
 3" = 1'-0"



F FLOOR SECTION F
 1 1/2" = 1'-0"

