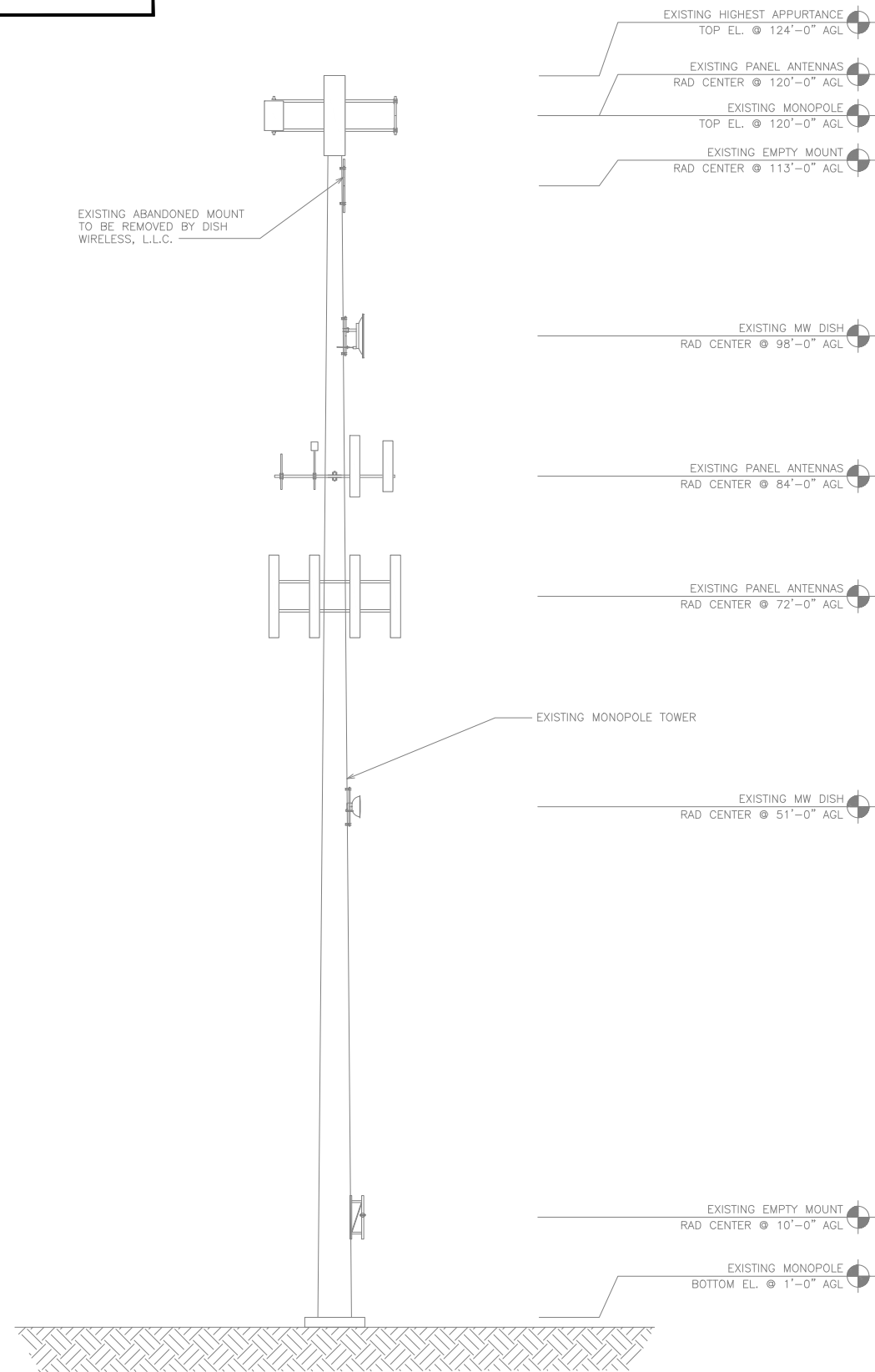
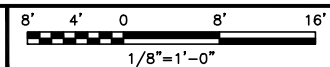


NOTES

1. CONTRACTOR SHALL FIELD VERIFY ALL DIMENSIONS.
2. ANTENNA SPECIFICATIONS REFER TO ANTENNA SCHEDULE AND TO FINAL CONSTRUCTION RFDS FOR ALL RF DETAILS.



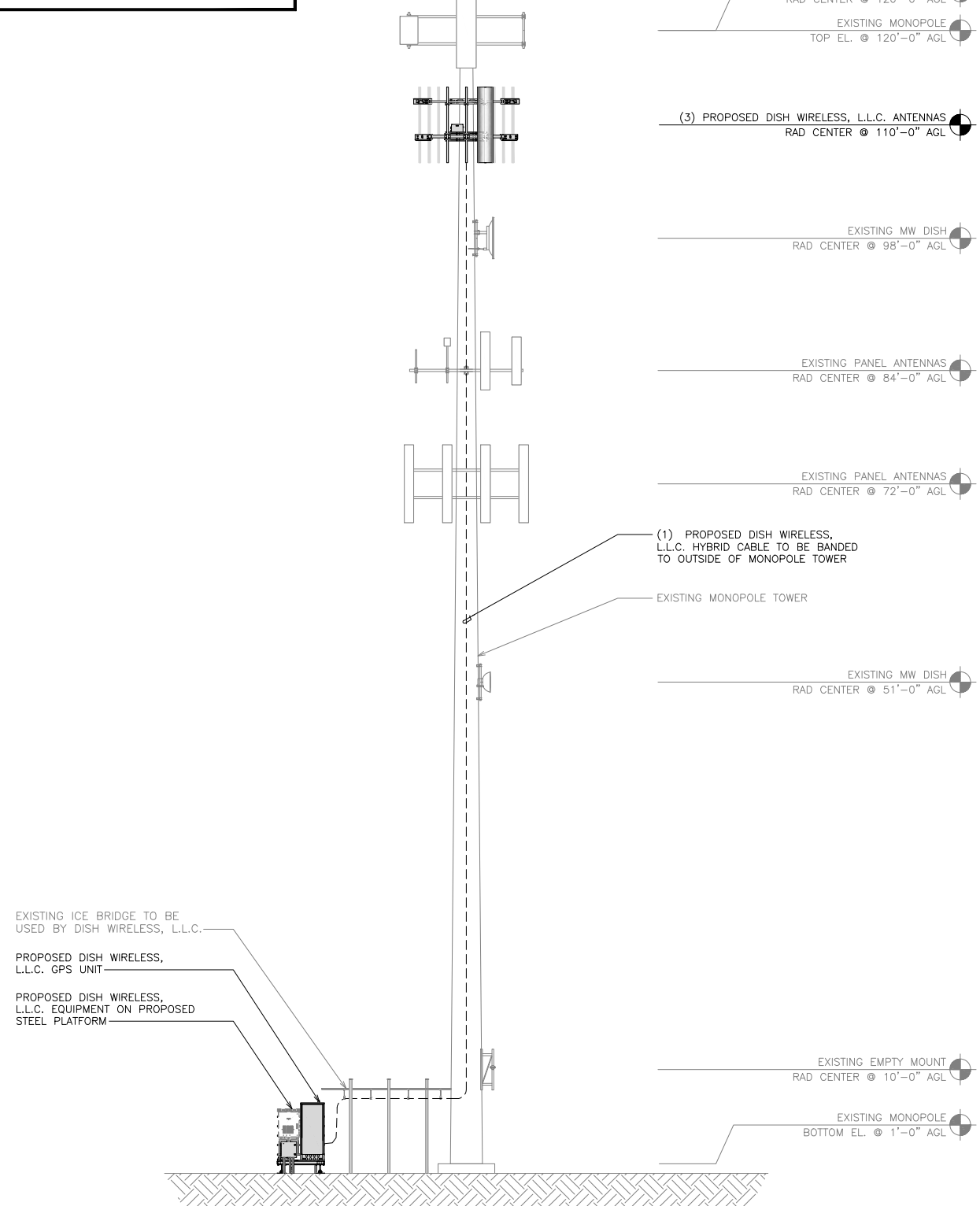
EXISTING WEST ELEVATION



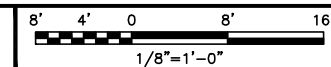
1

NOTES

1. CONTRACTOR SHALL FIELD VERIFY ALL DIMENSIONS.
2. ANTENNA AND MW DISH SPECIFICATIONS REFER TO ANTENNA SCHEDULE AND TO FINAL CONSTRUCTION RFDS FOR ALL RF DETAILS
3. NO PORTHOLES AVAILABLE AT DISH EQUIPMENT LEVEL
4. CONTRACTOR TO VERIFY UTILIZATION OF EXISTING CABLE CLIPS FOR EXTERIOR CABLE RUN



PROPOSED WEST ELEVATION



2



5701 S SANTA FE DR
ATTN: LEASE ADMINISTRATION
LITTLETON, CO 80120



TOWER ENGINEERING PROFESSIONALS
326 TRYON RD. RALEIGH, NC 27603
OFFICE: (919) 661-6351



07/22/21

IT IS A VIOLATION OF LAW FOR ANY PERSON, UNLESS THEY ARE ACTING UNDER THE DIRECTION OF A LICENSED PROFESSIONAL ENGINEER, TO ALTER THIS DOCUMENT.

DRAWN BY:	CHECKED BY:	APPROVED BY:
KDP	JFJ	BAP

RFDS REV #: TBD

CONSTRUCTION DOCUMENTS

SUBMITTALS		
REV	DATE	DESCRIPTION
A	06-01-21	PRELIMINARY
D	07-22-21	CONSTRUCTION

A&E PROJECT NUMBER
231274.274792

DISH WIRELESS, L.L.C.
PROJECT INFORMATION
DNDEN00368A
CO-CCI-T-825931
7375 SOUTHMOOR DR
FOUNTAIN, CO 80817

SHEET TITLE
TOWER ELEVATIONS

SHEET NUMBER
A-2.1