

# EXHIBIT

## COTTAGES AT WOODMEN HEIGHTS

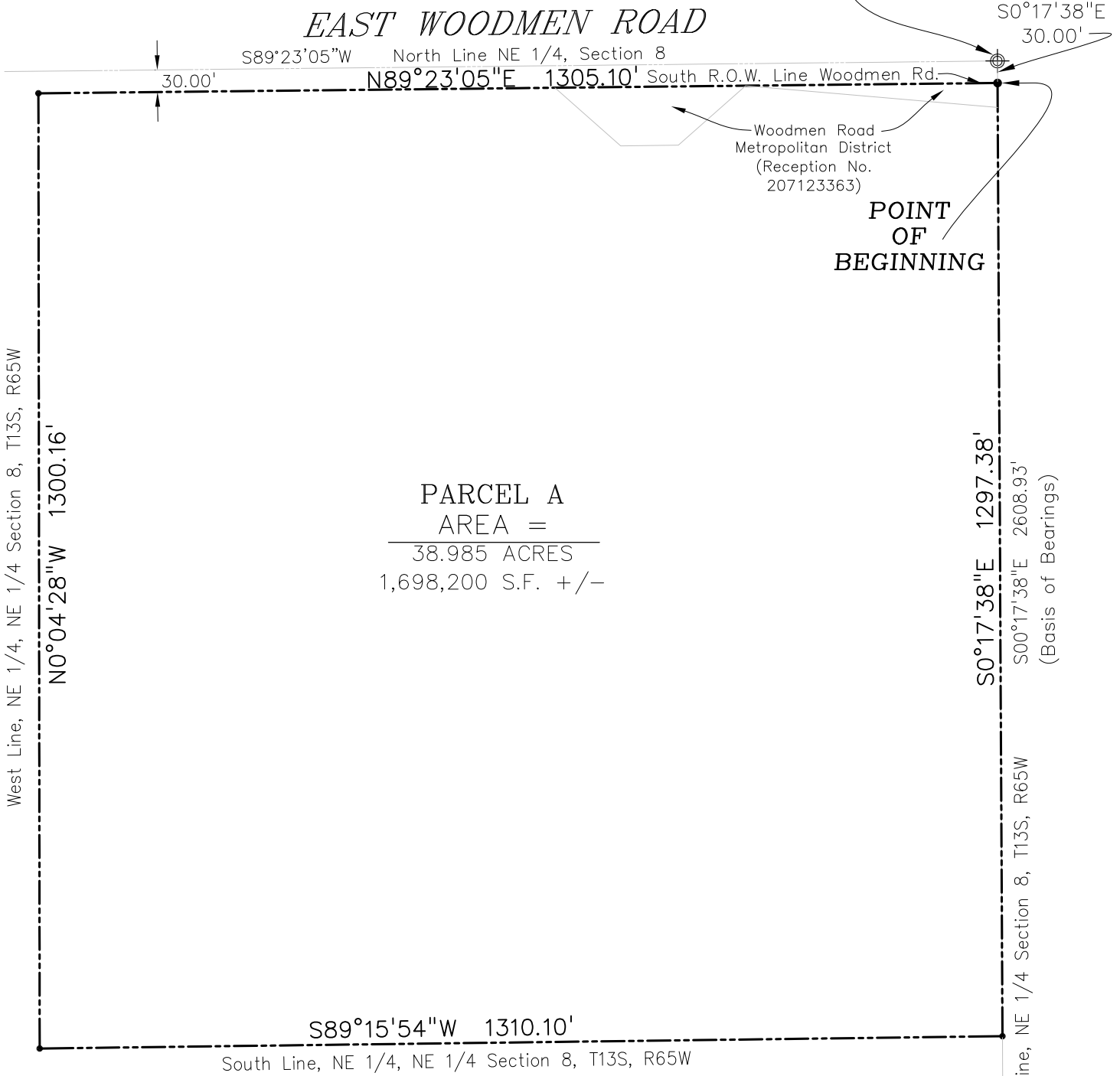
### ZONING PUD-PARCEL A

**POINT OF COMMENCEMENT**

NE Corner, NE 1/4  
Section 8, T13S,  
R65W, Sixth P.M.  
(Found 3 1/4"  
aluminum cap on a  
#6 rebar)



Stamping on Cap



**PARCEL A**  
AREA =  
38.985 ACRES  
1,698,200 S.F. +/-



Stamping on Cap

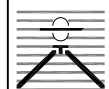
SE Corner, NE 1/4  
Section 8, T13S, R65W,  
Sixth P.M.  
(Found 3 1/4" aluminum  
cap on a #6 rebar)

NOTE: THIS MAP IS NOT A LAND SURVEY PLAT OR AN IMPROVEMENT SURVEY PLAT. THE PURPOSE OF THIS MAP IS TO DEPICT THE ATTACHED LEGAL DESCRIPTION.



SCALE: 1" = 200'

**PREPARED BY:**



**Drexel, Barrell & Co. Engineers/Surveyors**  
3 SOUTH 7TH STREET COLORADO SPRINGS, COLORADO 80905 (719)260-0887  
1800 38TH STREET BOULDER, COLORADO 80301 (303)442-4338  
710 11TH AVE, SUITE L-45 GREELEY, COLORADO 80631 (971)351-0645

Revisions - Date	Date	Drawn By	Job No.
	02/24/20	JCD	21369-00
	Scale	Checked By	Drawing No.
	1" = 200'	TDM	21369-00 ZONING