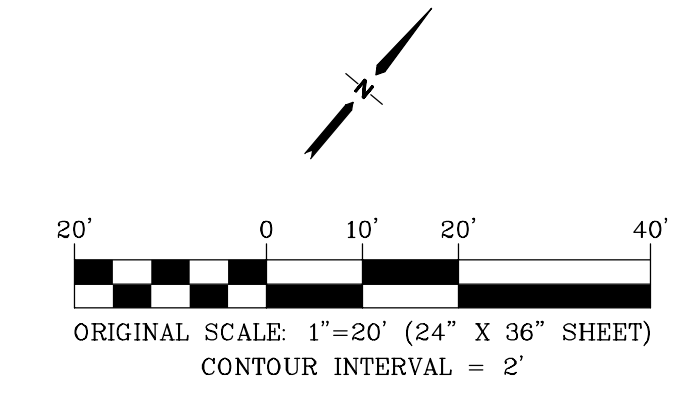
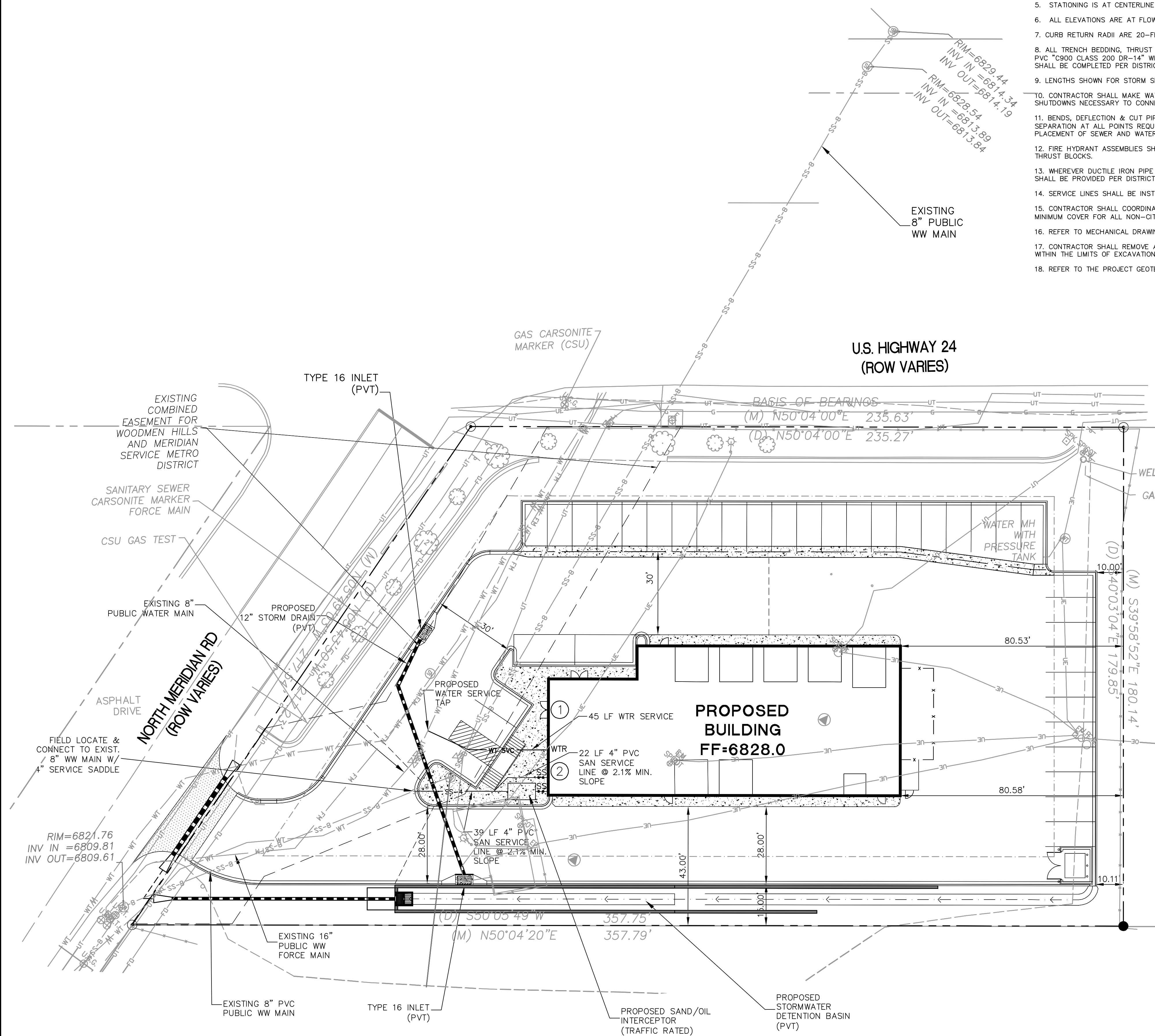


NOTE: CONTRACTOR SHALL POTHOLE TO FIELD VERIFY UTILITY LOCATIONS PRIOR TO CONSTRUCTION & ADJUST UTILITY CONNECTIONS ACCORDINGLY

GENERAL UTILITY NOTES:

- CONSTRUCTION SHALL MEET THE STANDARDS & SPECIFICATIONS OF WOODMEN HILLS METROPOLITAN DISTRICT.
- THE CONTRACTOR SHALL BE RESPONSIBLE FOR THE NOTIFICATION AND FIELD LOCATION OF ALL EXISTING UTILITIES, WHETHER SHOWN ON THE PLANS OR NOT, BEFORE BEGINNING CONSTRUCTION. LOCATION OF EXISTING UTILITIES SHALL BE VERIFIED BY THE CONTRACTOR PRIOR TO ACTUAL CONSTRUCTION.
- REVEGETATION OF ALL DISTURBED SLOPES SHALL BE DONE WITH DRY LAND GRASS SEED AFTER FINE GRADING IS COMPLETE.
- SANITARY SEWER PIPE SHALL BE PVC ASTM D3034-SDR35 UNLESS OTHERWISE NOTED.
- STATIONING IS AT CENTERLINE UNLESS OTHERWISE NOTED.
- ALL ELEVATIONS ARE AT FLOWLINE UNLESS OTHERWISE NOTED. ALL DIMENSIONS ARE FROM FACE OF CURB UNLESS OTHERWISE NOTED.
- CURB RETURN RADII ARE 20-FEET AT FLOWLINE UNLESS OTHERWISE NOTED.
- ALL TRENCH BEDDING, THRUST BLOCKS AND REVERSE ANCHORS SHALL BE INSTALLED PER DISTRICT STANDARDS. ALL WATER PIPE SHALL BE PVC "C900 CLASS 200 DR-14" WITH TRACER WIRE UNLESS OTHERWISE NOTED OR REQUIRED BY THE DISTRICT. DISINFECTION AND TESTING SHALL BE COMPLETED PER DISTRICT SPECIFICATIONS.
- LENGTHS SHOWN FOR STORM SEWER PIPES ARE TO CENTER OF MANHOLE.
- CONTRACTOR SHALL MAKE WATER CONNECTIONS WITHOUT SHUTDOWN OR NOTIFY THE DISTRICT AND AFFECTED RESIDENTS OF ANY SERVICE SHUTDOWNS NECESSARY TO CONNECT TO EXISTING LINES.
- BENDS, DEFLECTION & CUT PIPE LENGTHS SHALL BE USED TO HOLD HORIZONTAL ALIGNMENT OF SEWER AND WATER LINES TO 10 FEET SEPARATION AT ALL POINTS REQUIRED. ALIGNMENT CONSTRUCTION STAKES SHALL BE PLACED AT 25' INTERVALS ALONG CURVES FOR PLACEMENT OF SEWER AND WATER LINES.
- FIRE HYDRANT ASSEMBLIES SHALL BE INSTALLED PER DISTRICT STANDARDS AND SHALL INCLUDE LATERAL, VALVE, ELBOW, HYDRANT, AND THRUST BLOCKS.
- WHEREVER DUCTILE IRON PIPE IS USED, THE PIPE, FITTINGS AND HYDRANTS SHALL BE WRAPPED IN POLYETHYLENE & CATHODIC PROTECTION SHALL BE PROVIDED PER DISTRICT STANDARDS.
- SERVICE LINES SHALL BE INSTALLED PER DISTRICT STANDARDS.
- CONTRACTOR SHALL COORDINATE WITH GAS, ELECTRIC, TELEPHONE AND CABLE T.V. UTILITY SUPPLIERS FOR INSTALLATION OF ALL UTILITIES. MINIMUM COVER FOR ALL NON-CITY UTILITIES SHALL BE 36".
- REFER TO MECHANICAL DRAWINGS FOR EXTENSION OF UTILITIES INTO BUILDINGS.
- CONTRACTOR SHALL REMOVE AND DISPOSE OF ALL EXISTING STRUCTURES, DEBRIS, WASTE AND OTHER UNSUITABLE FILL MATERIAL FOUND WITHIN THE LIMITS OF EXCAVATION.
- REFER TO THE PROJECT GEOTECHNICAL REPORT FOR BACKFILL AND COMPACTION SPECIFICATIONS.

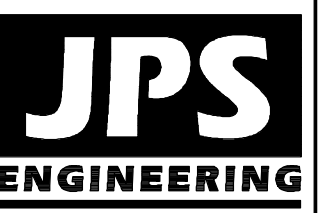


KEYED NOTE:

- GAS METER; COORDINATE WITH CSU FOR GAS SERVICE CONNECTIONS
- ELECTRIC METER; COORDINATE WITH MVEA FOR ELECTRIC SERVICE CONNECTIONS

BIG "O" TIRES
 6985 N. MERIDIAN ROAD, PEYTON, CO 80831

SITE UTILITY PLAN



19 E. Willamette Ave.
 Colorado Springs, CO 80903
 PH: 719-477-9429
 FAX: 719-471-0766
 www.jpsengr.com



CALL UTILITY NOTIFICATION CENTER OF COLORADO
1-800-922-1987
 CALL 2-BUSINESS DAYS IN ADVANCE BEFORE YOU DIG, GRADE, OR EXCAVATE FOR THE MARKING OF UNDERGROUND MEMBER UTILITIES.

No.	REVISION	BY	DATE
A	COUNTY SUBMITTAL	JPS	1/18/18
B	COUNTY COMMENTS	JPS	4/18/18

HORIZ. SCALE: 1"=20'	DRAWN: MSP
VERT. SCALE: N/A	DESIGNED: JPS
SURVEYED: RIDGELINE	CHECKED: JPS
CREATED: 7/07/17	LAST MODIFIED: 4/18/18
PROJECT NO: 091701	MODIFIED BY: MSP

PCD PROJECT NO. SF-18-003

U1.1

C:\civil3d\2018\projects\091701\hammers-big-O-falcon.dwg\Civil\U1.1.dwg Apr 19, 2018 - 9:34am