



Preliminary (PA) – Punchlist from DPW Stormwater

Project Name:	Forest Lakes F6
PCD Filing Number(s):	SF2027
ESQCP #:	ESQ2111
Attendees:	DPW SW: Ben Jones, Dylan Finley, Molly Layshock DPW Planning: Brad Walters, David Parkerson Developer: Mark Sherwood (Classic)
Date of Walk-Thru:	12-20-2022
Walk-Thru #:	1

Findings to be addressed prior to scheduling a follow-up walk-thru:

As-Built Drawings:

- Please provide As-Built Drawings per ECM 5.10.6
- Please provide Pond Certification Letter
- Please provide MHFD Detention Spreadsheet (v4.06) with updates that reflect as-built conditions

Stormwater Inlet Structures

- Remove sediment and forms from inlets along Mesa Top Dr North and Mesa Top Dr South (reference Photos 7&8)

Tract D Extended Detention Basin Facility B [Sheet 22-28 of CD's]

- Remove all weeds from the emergency spillway.
- Remove weeds from pond embankments and pond bottom.
- Mow all overgrown vegetation and seed and mulch all bare areas within the pond embankments and pond bottom.
- Remove trash from pond perimeter.
- Clean out sediment and debris from forebay, outlet structure, and trickle channels.
- Lower pond bottom to top of trickle channel curb with a 3% slope towards trickle channel for positive drainage.
- Both 7ft forebay weirs were not installed (Sheet 23 & 24 of CD's)
- Address erosion on embankments near outlet structure.
- Rubber gasket/caulking missing from orifice plate (Sheet 25 of CD's)
- Have engineer confirm in an email and As-Built that the type of micro screen installed is fine. There is a discrepancy on the plans: Sheet 25 shows a bar grate type in one detail and Sheet 27 shows Vee Wire type in two details.

Photos:

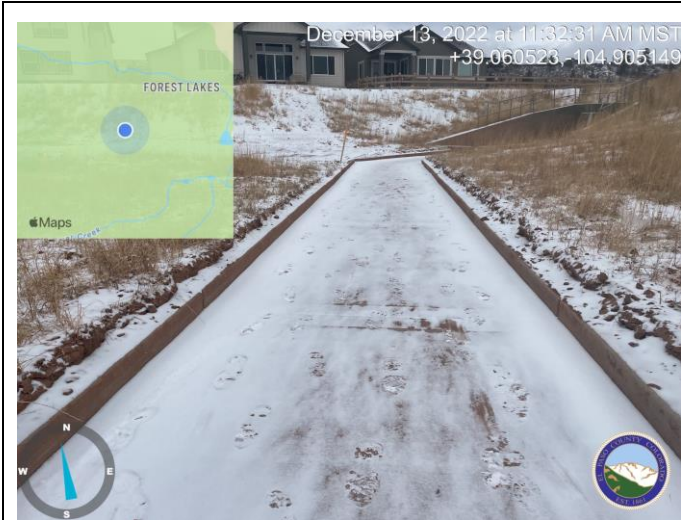


Photo 1: Remove sediment from trickle channel. Lower pond bottom to top of trickle channel curb with a 3% slope towards trickle channel for positive drainage.



Photo 2: Erosion occurring on pond embankments



Photo 3: Forebay weir missing. Remove sediment from forebay.

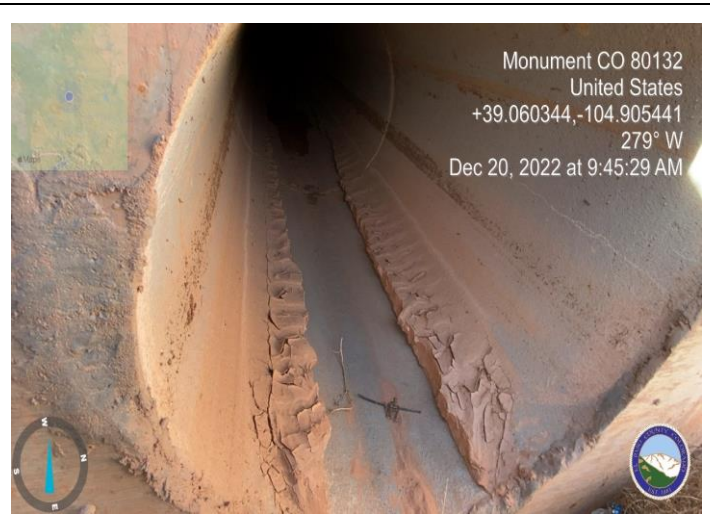


Photo 4: Remove sediment from 42" culvert that outfalls at southwestern forebay. (Reference Sheet 22 of CD's)



Photo 5: Remove sediment and debris from pond forebay



Photo 6: Stabilize and seed pond slopes and disturbed area (FA requirement, so just a reminder at this point)



Photo 7: Remove sediment from inlets along Mesa Top Dr North and Mesa Top Dr South



Photo 8: Remove forms from inlets along Mesa Top Dr North and Mesa Top Dr South