

100'-0" x 30'-0"

MESA TOP DRIVE SOUTH BRIDGE ELITE PROPERTIES of AMERICA, INC

DRAWING INDEX

SHEET NO.	DESCRIPTION
1	TITLE PAGE
2	GENERAL NOTES & ANCHOR DETAILS
3	PLAN VIEW
4	CROSS SECTION
5	ANCHOR DETAILS
6	DETAILS
7	DETAILS
8	SPLICE DETAILS
9	DETAILS
10	DETAILS

C:\AUTODESK VAULT\WORKING\2020\BEM1651715\CAD\FABRICATION\REV AB-1\BEM1715-030 REV-0.DWG 10/29/2021 12:24 PM

CONTECH
FABRICATION
DRAWING



100'-0" x 30'-0"
MESA TOP DRIVE SOUTH BRIDGE
ELITE PROPERTIES of AMERICA, INC
FOUNTAIN, CO

CONTECH
ENGINEERED SOLUTIONS LLC
www.ContechES.com
10060 E 18th Street, CO 80531
800-328-3047 320-344-9126 320-566-3148 FAX

BIG R
BRIDGE

DATE: 7/24/2020	
DESIGNED: NBE	DRAWN: RDH
CHECKED: NBE	APPROVED: NBE
PROJECT No.: 621715	SEQUENCE No.: 030
SHEET: 1 OF 12	

AB-1	10/29/2021	AS-BUILT FINALS	TLF	BY
AB	9/28/2021	AS-BUILT FINALS	TLF	
ED	7/22/2021	APPROVED FOR CONSTRUCTION	TLF	
MARK	DATE	REVISION DESCRIPTION		

The design and information shown on this drawing is the property of Contech Engineered Solutions, LLC and contractor by Contech Engineered Solutions, LLC ("Contech"). Neither this drawing, nor any part thereof, is to be used, copied, or reproduced in any way without the prior written consent of Contech. Failure to comply is done at the user's own risk and Contech expressly disclaims any liability or responsibility for such use. If discrepancies between the supplied information upon which the drawing is based and actual field conditions are noted, the user must immediately report these discrepancies to Contech for re-evaluation of the design. Contech immediately for re-evaluation of the design. Contech accepts no liability for designs based on missing, incomplete or inaccurate information supplied by others.

GENERAL NOTES:

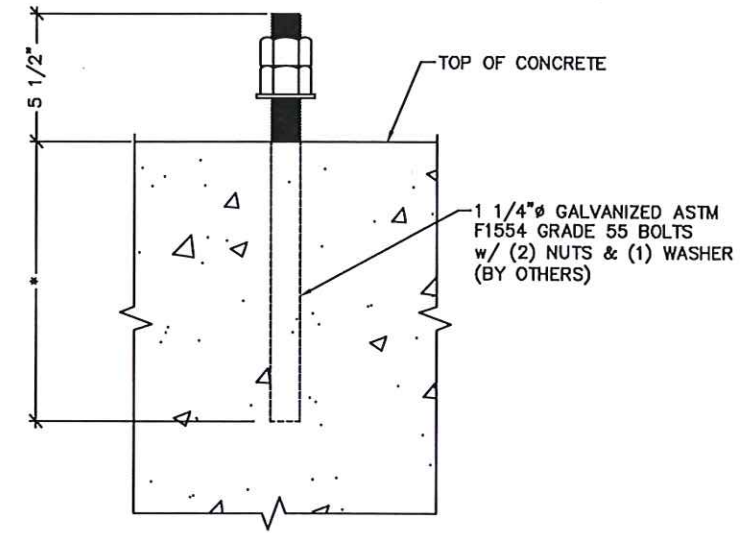
- CONTECH ENGINEERED SOLUTIONS HAS AISC QUALITY CERTIFIED BRIDGE FABRICATION - ADVANCED (MAJOR) WITH A FRACTURE CRITICAL AND SOPHISTICATED PAINT ENDORSEMENT AND CWB CERTIFIED TO CSA STANDARD W47.1 DIVISION 2.
- DESIGN IS IN ACCORDANCE WITH THE AASHTO LRFD BRIDGE DESIGN SPECIFICATIONS, 8th EDITION 2017.
- MATERIALS (UNLESS NOTED OTHERWISE):
 - STRUCTURAL STEEL: ASTM A588 WEATHERING STEEL
 - ELASTOMERIC PADS: GRADE 4, 60 DUROMETER
 - SHEET PILING: ASTM A929 (GALV)
STRUCTURAL BOLTS: ASTM F3125 GRADE A325 (TYPE 1)
 - GUARDRAIL BOLTS: ASTM A307 (GALV)
- DESIGN LOADINGS:
 - BRIDGE DEAD LOAD PLUS 37.5 FUTURE WEARING SURFACE.
 - VEHICLE LIVE LOAD: HL-93, MAX ADTT = 160
 - WIND LOADING PER AASHTO LRFD BRIDGE DESIGN SPECIFICATIONS SECTION 3.8:
WIND SPEED = 115 MPH
WIND EXPOSURE CATEGORY = C
MAX HEIGHT OF STRUCTURE = 33 FT.
 - BRIDGE RAIL DESIGNED FOR TL-1 LOADING IN ACCORDANCE WITH AASHTO LRFD BRIDGE DESIGN SPECIFICATIONS APPENDIX A13.2 (RAIL HAS NOT BEEN CRASH TESTED)
 - SEISMIC LOADING PER AASHTO LRFD BRIDGE DESIGN SPECIFICATIONS SECTION 3.10:
SITE CLASS: D
PGA = 0.058
S_s = 0.125
S₁ = 0.035
PERIOD OF BRIDGE = T_m = 0.076 SEC
- BRIDGE TO BE BUILT TO THE REQUIREMENTS OF AWS D1.5.
- ALL SHOP WELDING SHALL USE THE GAS METAL ARC WELDING OR FLUX CORED ARC WELDING PROCESS.
- FINISH:
ALL EXPOSED SURFACES OF STEEL TO BE CLEANED IN ACCORDANCE WITH STEEL STRUCTURES PAINTING COUNCIL SURFACE PREPARATION SPECIFICATIONS NO. 1, SSPC-SP1 SOLVENT CLEANING. EXPOSED SURFACES OF STEEL SHALL BE DEFINED AS THOSE SURFACES SEEN FROM THE DECK OR FROM THE OUTSIDE (AND BOTTOM) OF THE STRUCTURE. ALL OTHER SURFACES TO HAVE STANDARD MILL FINISH.
- ALL BOLTED CONNECTIONS ARE CONSIDERED TO BE PRETENSIONED OR SLIP-CRITICAL CONNECTIONS. ALL BOLTS ARE TO BE PRETENSIONED PER THE REQUIREMENTS OF SECTION 8.2 OF THE SPECIFICATION FOR STRUCTURAL JOINTS USING HIGH-STRENGTH BOLTS BY RCSC.
- ALL BOLTS, NUTS AND WASHERS SHALL BE FURNISHED IN THE AMOUNT OF 5% IN EXCESS OF THE NUMBER REQUIRED FOR EACH SIZE AND LENGTH.
- IF BOLTS DO NOT SMOOTHLY ENGAGE UP TO SNUG-TIGHT, THERE MAY BE AN OBSTRUCTION WITHIN THE THREADS. THE BOLTS SHOULD BE REMOVED, THE THREADS ON THE BOLT AND NUT CLEANED AND RETAPPED IF NECESSARY TO ALLOW SMOOTH INSTALLATION OF THE BOLT. (IF APPLICABLE)
- MAINTENANCE NOTE: CONTECH RECOMMENDS NOT APPLYING DE-ICING OR DUST PROHIBITIVE CHEMICALS OR SALTS TO ANY PART OF THE BRIDGE STRUCTURE. IF DE-ICING OR DUST PROHIBITIVE CHEMICALS OR SALTS ARE APPLIED TO ANY PART OF THE BRIDGE STRUCTURE, CONTECH WILL NOT BE RESPONSIBLE FOR ANY RESULTANT ACCELERATED CORROSION.

CONCRETE NOTES

- BIG R BRIDGE IS RESPONSIBLE FOR THE STRUCTURAL DESIGN OF THE CONCRETE DECK. ALL ISSUES RELATED TO MATERIAL SUPPLY, TESTING AND INSTALLATION ARE OUTSIDE OF BIG R BRIDGE'S RESPONSIBILITY.
- CONCRETE MIX DESIGN, MATERIALS, MIXING, PLACEMENT, FINISHING AND TESTING SHALL BE IN ACCORDANCE WITH THE REQUIREMENTS OF SECTION 601 OF CDOT STANDARD SPECIFICATIONS FOR ROAD AND BRIDGE CONSTRUCTION, 2017 EDITION.
- MINIMUM MATERIAL REQUIREMENTS:
 - CONCRETE: CLASS D OR H: f_c = 4500 psi AT 28 DAY
AIR CONTENT OF 5.5% +/- 1%
UNIT WEIGHT OF 145 PCF MAX
 - REINFORCING: ASTM A615 GRADE 60 OR ASTM A775 FOR EPOXY COATING
- THE USE OF EPOXY COATED REBAR, GALVANIZED REBAR, DECK SEALERS OR ANY OTHER FORM OF PROTECTION OF THE REBAR SHALL BE DONE AS NEEDED FOR LOCAL CONDITIONS OR AS REQUIRED PER THE PROJECT CONTRACT DOCUMENTS AND IS NOT THE RESPONSIBILITY OF BIG R BRIDGE.
- THE CONTRACTOR MUST EXERCISE CARE TO CONTROL TRAFFIC AND STORAGE OF MATERIALS ON THE FORM DECK BEFORE CONCRETE IS PLACED.
- LONGITUDINAL BARS MAY BE SPLICED IF REQUIRED. SPLICES SHALL BE STAGGERED EVERY OTHER LONGITUDINAL BAR. SPLICES SHALL BE LOCATED AT OR NEAR THE ONE-THIRD POINT OF THE BAY SPANS FROM FLOOR BEAM TO FLOOR BEAM. REQUIRED SPLICE LENGTHS ARE AS FOLLOWS:

BAR SIZE	NORMAL WEIGHT CONCRETE (145 PCF)	LIGHT WEIGHT CONCRETE (120 PCF)
#4	29"	35"
#5	36"	43"
#6	43"	52"
#7	50"	60"
#8	57"	69"
#9	70"	85"

- STAY IN PLACE GALVANIZED FORM DECK SHALL BE USED ON THE BRIDGE. FORM DECK SHALL BE SHOP ATTACHED TO FLOOR BEAMS VIA SELF-DRILLING FASTENERS, WELDING OR POWER ACTUATED FASTENERS. LONGITUDINAL SHEET LAPS SHALL BE ATTACHED WITH SELF-DRILLING FASTENERS AT 36" MAXIMUM SPACING. THE ATTACHMENT OF THE FORM DECK TO THE FLOOR BEAMS IS ONLY NECESSARY TO KEEP THE FORM DECK IN PLACE DURING TRANSPORTATION AND DURING THE CONCRETE PLACEMENT. THE FORM DECK IS NOT REQUIRED FOR DIAPHRAGM ACTION OR COMPOSITE ACTION AND PROVIDES NO STRUCTURAL BENEFIT TO THE TRUSS OR THE DECK AFTER THE CONCRETE IS SET.
- CONCRETE TO BE FINISHED WITH A TRANSVERSE BROOM FINISH.
- THE USE OF GROOVED CONTRACTION JOINTS SHALL BE PUT IN PER THE PROJECT CONTRACT DOCUMENTS OR AT THE DISCRETION OF THE ENGINEER AND OWNER. IF CONTRACTION JOINTS ARE USED, THEY SHALL BE PLACED OVER THE CENTERLINE OF THE FLOOR BEAMS AS NEEDED.



ANCHOR BOLT DETAIL

***NOTE:**
ANCHOR BOLTS ARE DESIGNED BY CONTECH FOR STEEL STRENGTH IN SHEAR AND TENSION OF THE ANCHOR BOLT ONLY. ALL DESIGN CONSIDERATIONS REGARDING CONCRETE BREAKOUT STRENGTH IN SHEAR AND TENSION, PULLOUT STRENGTH, CONCRETE SIDE-FACE BLOWOUT STRENGTH, CONCRETE PRYOUT STRENGTH, EMBEDMENT DEPTH, TYPE OF ANCHORAGE OR ANY OTHER CONCRETE FAILURE MODES ARE NOT CONSIDERED AND ARE NOT THE RESPONSIBILITY OF CONTECH. IF LARGER DIAMETER BOLTS ARE REQUIRED TO MEET ANY OF THESE REQUIREMENTS, THAT INFORMATION MUST BE PROVIDED TO CONTECH PRIOR TO BEGINNING ANY FABRICATION ON THE BRIDGE.

ITEM	QTY	UNIT WEIGHT (LBS)	TOTAL WEIGHT (LBS)
BRIDGE SECTION 1A	1	32,311	32,311
BRIDGE SECTION 2A	1	47,349	47,349
BRIDGE SECTION 1B	1	21,710	21,710
BRIDGE SECTION 2B	1	31,920	31,920
LOOSE ITEMS	-	-	18,000
TOTAL BRIDGE WEIGHT:			151,290

ITEM	QTY	UNIT WEIGHT (LBS)	TOTAL WEIGHT (LBS)
BRIDGE SECTION 1A	1	21,710	21,710
BRIDGE SECTION 2A	1	31,920	31,920
BRIDGE SECTION 1B	1	32,311	32,311
BRIDGE SECTION 2B	1	47,349	47,349
LOOSE ITEMS	-	-	18,000
TOTAL BRIDGE WEIGHT:			151,290

BEARING REACTION IN KIPS	MAX AT INTERIOR STRINGER			MAX AT EXTERIOR STRINGER			TOTAL AT ABUTMENT		
	P	H	L	P	H	L	P	H	L
DEAD LOAD (DC)	53.78			39.77			240.89		
WEARING SURFACE LOAD (DW)	13.44			34.42			109.14		
VEHICLE LOAD (LL)	90.43			68.83			193.83		
VEHICLE LOAD + DYNAMIC LOAD ALLOWANCE (LL+IM)	104.99			79.91			236.87		
WIND LOAD (WS)	-30.00*	3.00			3.00		-30.00*	15.00	
THERMAL LOAD (TU)						13.32			66.59
BREAKING FORCE (BR)						7.20			36.00
SEISMIC LOAD (EQ)		13.36	26.72		13.36	26.72		66.79	133.59

P: VERTICAL LOAD
 H: HORIZONTAL LOAD TRANSVERSE TO THE STRUCTURE
 L: HORIZONTAL LOAD LONGITUDINAL TO THE STRUCTURE
 * WIND LOAD UPLIFT ASSUMES FULL 20 PSF TO DECK AREA IS APPLIED TO ONE STRINGER LINE

CONTECH
FABRICATION
 DRAWING



The design and information shown on this drawing is the property of Contech Engineered Solutions, LLC and is not to be used, copied, or reproduced in any form without the prior written consent of Contech. Failure to comply is done at the user's own risk and Contech expressly disclaims any liability or responsibility for such use.

If discrepancies between the supplied information upon which the drawing is based and actual field conditions are noted, the contractor shall immediately notify Contech in writing. Contech will investigate and, if necessary, revise the drawing. Contech does not accept any liability for design errors, omissions, or inaccuracies. Contech's responsibility is limited to the design and information provided by others.

DATE	BY	REVISION DESCRIPTION
7/22/2021	EO	APPROVED FOR CONSTRUCTION
9/28/2021	AS	AS-BUILT FINALS
10/29/2021	AB-1	AS-BUILT FINALS

100'-0" x 30'-0"
 MESA TOP DRIVE SOUTH BRIDGE
 ELITE PROPERTIES OF AMERICA, INC
 FOUNTAIN, CO

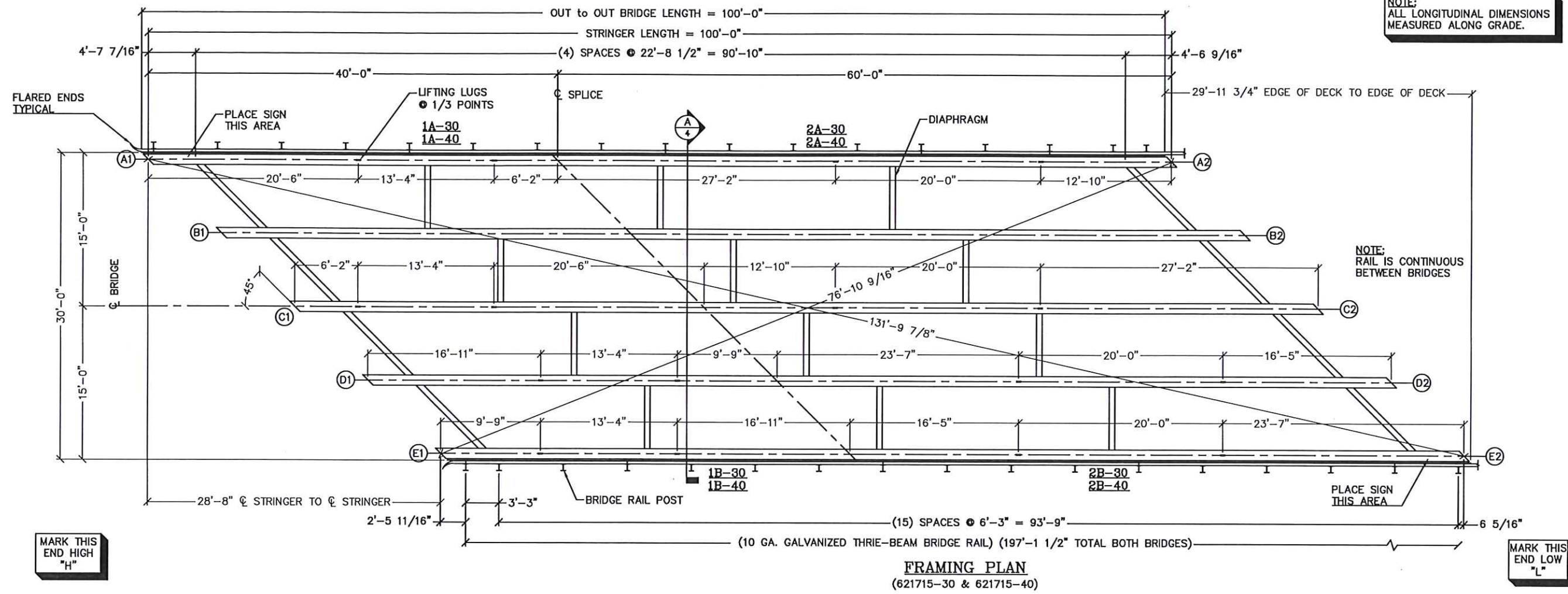
CONTECH
 ENGINEERED SOLUTIONS LLC
 www.conteches.com
 18000 C-16 Driveway, CO 80021
 800-328-3047 320-342-9120 320-560-1148 FAX

BIG R
 BRIDGE

DATE: 7/24/2020

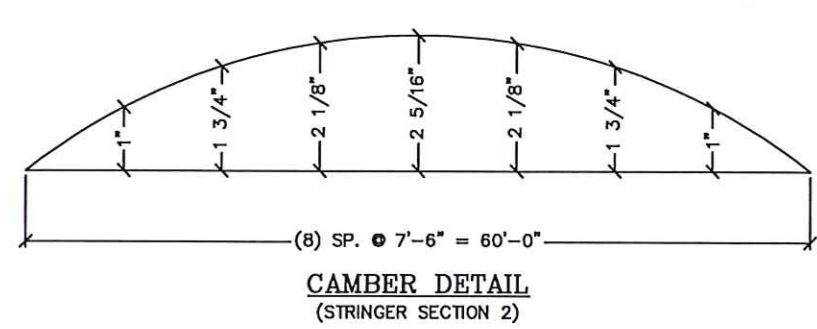
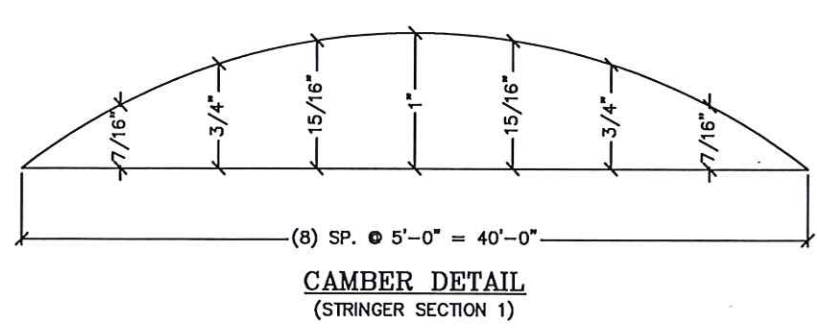
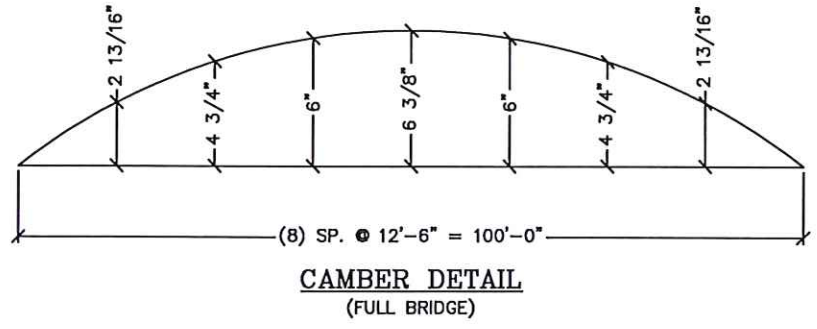
DESIGNED: NBE	DRAWN: RDH
CHECKED: NBE	APPROVED: NBE
PROJECT No.: 621715	SEQUENCE No.: 030
SHEET: 2	OF 12

C:\AUTODESK\VAULT\WORKING\2020\BEM\621715\CAD\FABRICATION\REV AB-1\621715-030 REV.LO.DWG 10/29/2021 12:24 PM



MARK THIS END HIGH "H"

MARK THIS END LOW "L"



MEMBERS	DESCRIPTION
GIRDER	W 36x232
DIAPHRAGM	W 21x44
POST BLOCK	W 14x22
SIDE DAM	PL 1/4"

BUILD 2 AS SHOWN
621715-30
621715-40

CONTECH
FABRICATION
DRAWING



The design and information shown on this drawing is the property of Contech Engineered Solutions, LLC and is to be used only for the project and location specified. It is not to be used, reproduced or modified in any manner without the written consent of Contech Engineered Solutions, LLC. Contech Engineered Solutions, LLC expressly disclaims any liability or responsibility for any damages or consequences arising from the use of this drawing. If discrepancies between the supplied information upon which this drawing is based and actual field conditions are noted, the contractor shall immediately notify Contech Engineered Solutions, LLC in writing. Contech Engineered Solutions, LLC shall not be responsible for any errors or omissions in this drawing. Contech Engineered Solutions, LLC shall not be responsible for any delays or interruptions in the construction of the project. Contech Engineered Solutions, LLC shall not be responsible for any changes or modifications to the design. Contech Engineered Solutions, LLC shall not be responsible for any claims or damages arising from the use of this drawing. Contech Engineered Solutions, LLC shall not be responsible for any claims or damages arising from the use of this drawing.

MARK	DATE	REVISION DESCRIPTION	BY
AB-1	10/29/2021	AS-BUILT FINALS	TLF
AB	9/28/2021	AS-BUILT FINALS	TLF
ED	7/22/2021	APPROVED FOR CONSTRUCTION	TLF

100'-0" x 30'-0"
MESA TOP DRIVE SOUTH BRIDGE
ELITE PROPERTIES OF AMERICA, INC
FOUNTAIN, CO

CONTECH
ENGINEERED SOLUTIONS LLC
www.conteches.com
10500 C 16 Dr., Denver, CO 80231
800-328-3047 300-345-9120 300-560-3148 FAX

BIG R
BRIDGE

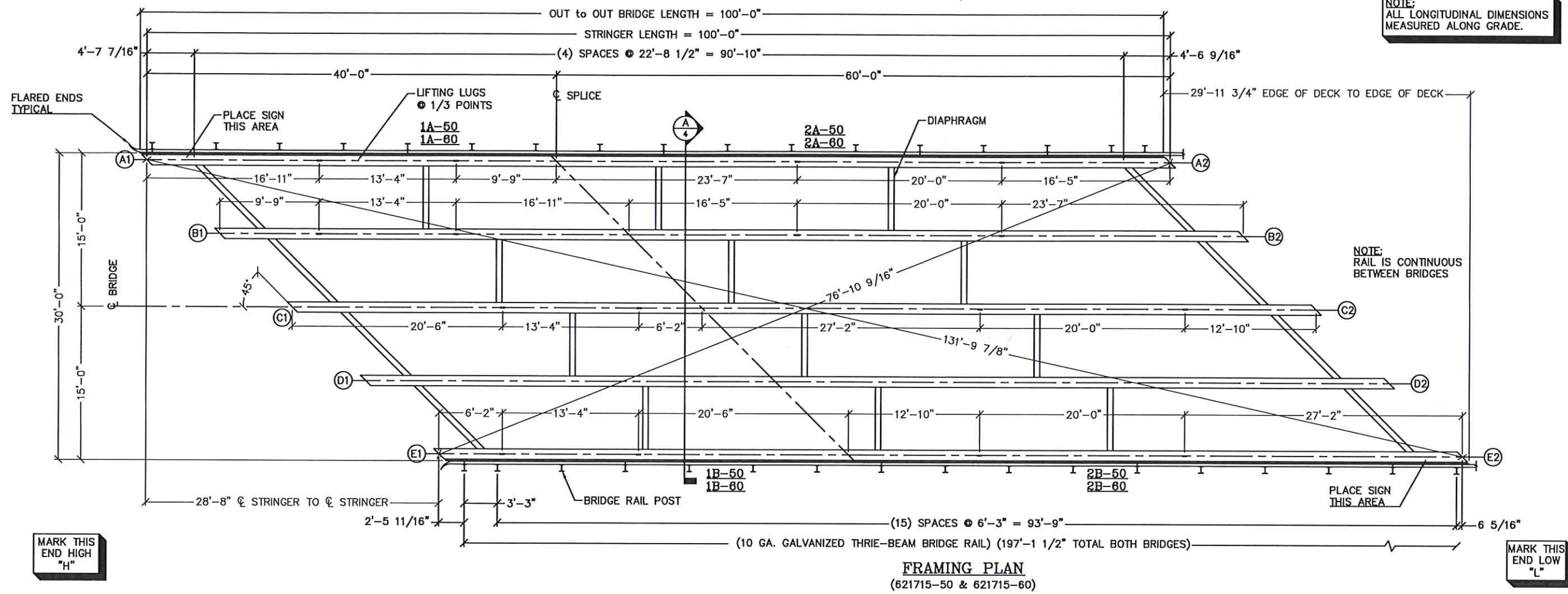
DATE: 7/24/2020

DESIGNED: NBE	DRAWN: RDH
CHECKED: NBE	APPROVED: NBE

PROJECT No.: 621715 SEQUENCE No.: 030

SHEET: 3 OF 12

C:\AUTODESK VALLT WORKING\2020\BEAM\621715\CAD\FABRICATION\REV AB-1\621715-030 REV-0.DWG 10/29/2021 12:24 PM

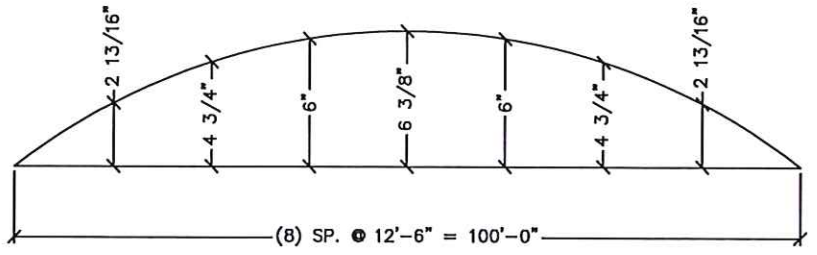


NOTE:
ALL LONGITUDINAL DIMENSIONS
MEASURED ALONG GRADE.

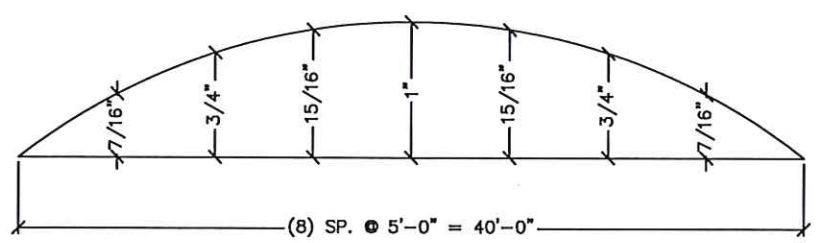
NOTE:
RAIL IS CONTINUOUS
BETWEEN BRIDGES

**MARK THIS
END HIGH
"H"**

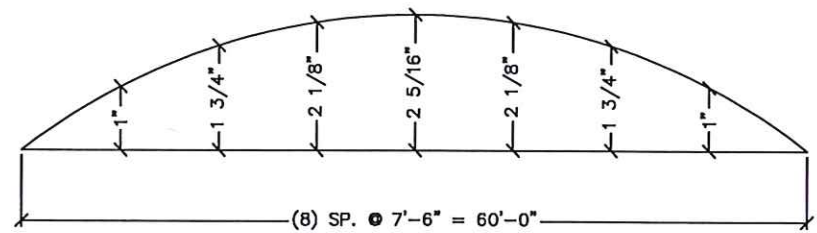
**MARK THIS
END LOW
"L"**



CAMBER DETAIL
(FULL BRIDGE)



CAMBER DETAIL
(STRINGER SECTION 1)



CAMBER DETAIL
(STRINGER SECTION 2)

MEMBERS	DESCRIPTION
GIRDER	W 36x232
DIAPHRAGM	W 21x44
POST BLOCK	W 14x22
SIDE DAM	PL 1/4"

BUILD 2 AS SHOWN
621715-50
621715-60

CONTECH
FABRICATION
DRAWING



This design and information shall be the property of the engineering firm and shall not be used for any other project without the written consent of the engineering firm. The engineer and contractor shall be responsible for the accuracy of the information provided. The engineer and contractor shall be responsible for the accuracy of the information provided. The engineer and contractor shall be responsible for the accuracy of the information provided.

MARK	DATE	REVISION DESCRIPTION	BY
AB-1	10/29/2021	AS-BUILT FINALS	TLF
AB	9/28/2021	AS-BUILT FINALS	TLF
EO	7/22/2021	APPROVED FOR CONSTRUCTION	TLF

100'-0" x 30'-0"
MESA TOP DRIVE SOUTH BRIDGE
ELITE PROPERTIES OF AMERICA, INC
FOUNTAIN, CO

CONTECH
ENGINEERED SOLUTIONS LLC
www.conteches.com
19000 C-16 Driveway, CO 80021
800-328-2047 320-345-9120 320-568-3148 FAX

BIG R
BRIDGE

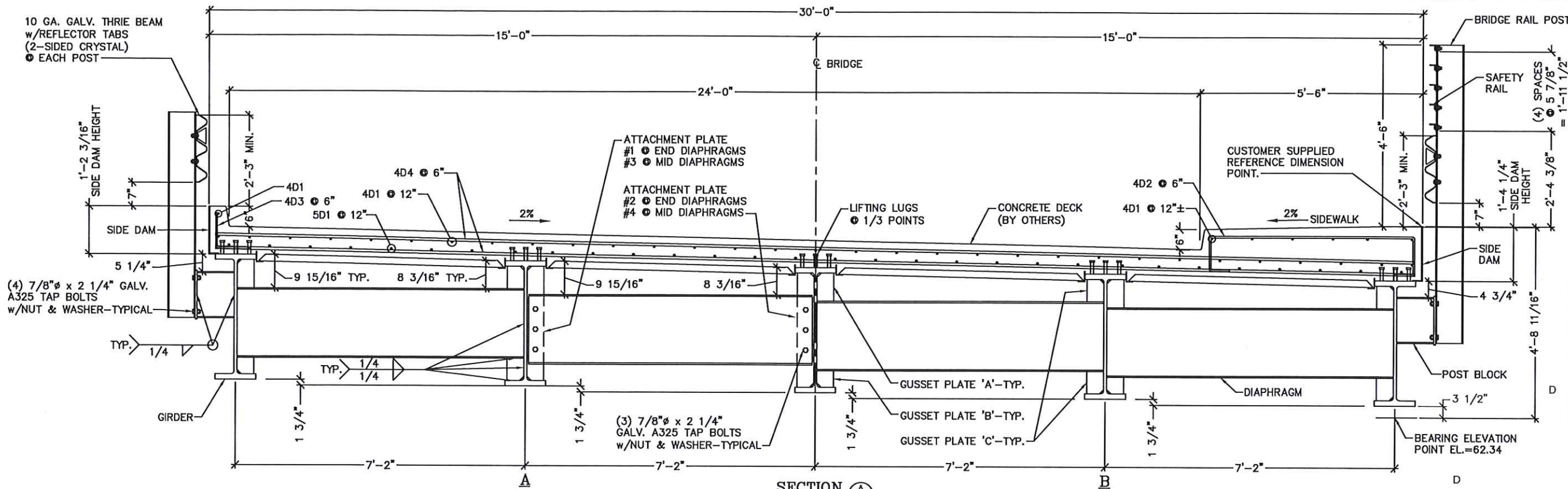
DATE: 7/24/2020

DESIGNED: NBE	DRAWN: RDH
CHECKED: NBE	APPROVED: NBE

PROJECT No.: 621715 SEQUENCE No.: 030

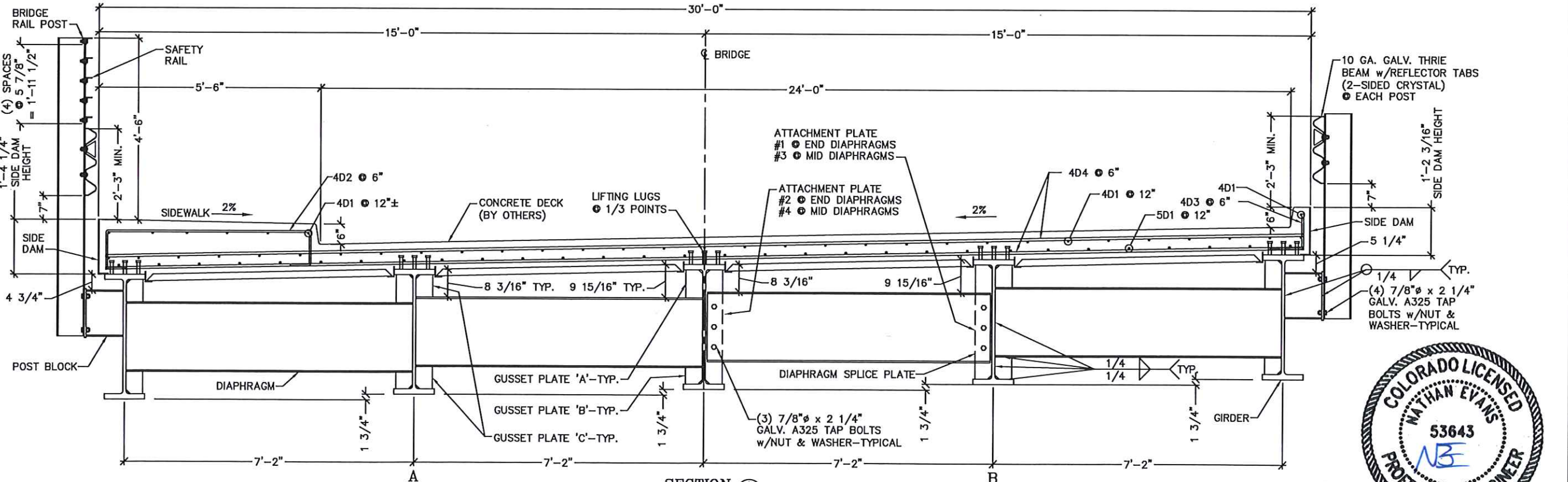
SHEET: 4 OF 12

C:\AUTODESK\VAULT\WORKING\2020\BEAM\621715\CAD\FABRICATION\REV AB-11621715-030 REV A.DWG 10/29/2021 1:22:24 PM



SECTION A-3

SOUTH BRIDGES (BUILD 2)



SECTION A-3

NORTH BRIDGES (BUILD 2)

CONTECH FABRICATION DRAWING



The design and information shown on this drawing is the property of Contech Solutions LLC. It is provided as a service to the project owner, engineer and contractor by Contech Engineers Solutions, LLC ("Contech"). Neither the drawing, nor any part thereof, is to be used for any other project without the prior written consent of Contech. Failure to comply is done at the user's own risk and Contech expressly disclaims any liability or responsibility for such use.

If discrepancies between the supplied information and the actual conditions are discovered, the user shall immediately report the same to Contech. Contech will immediately re-evaluate the design. Contech does not warrant the accuracy of the information supplied or its completeness or its accuracy.

MARK	DATE	REVISION DESCRIPTION	BY
AB-1	10/29/2021	AS-BUILT FINALS	TLF
AB	9/28/2021	AS-BUILT FINALS	TLF
EO	7/22/2021	APPROVED FOR CONSTRUCTION	TLF

100'-0" x 30'-0"
 MESA TOP DRIVE SOUTH BRIDGE
 ELITE PROPERTIES OF AMERICA, INC
 FOUNTAIN, CO

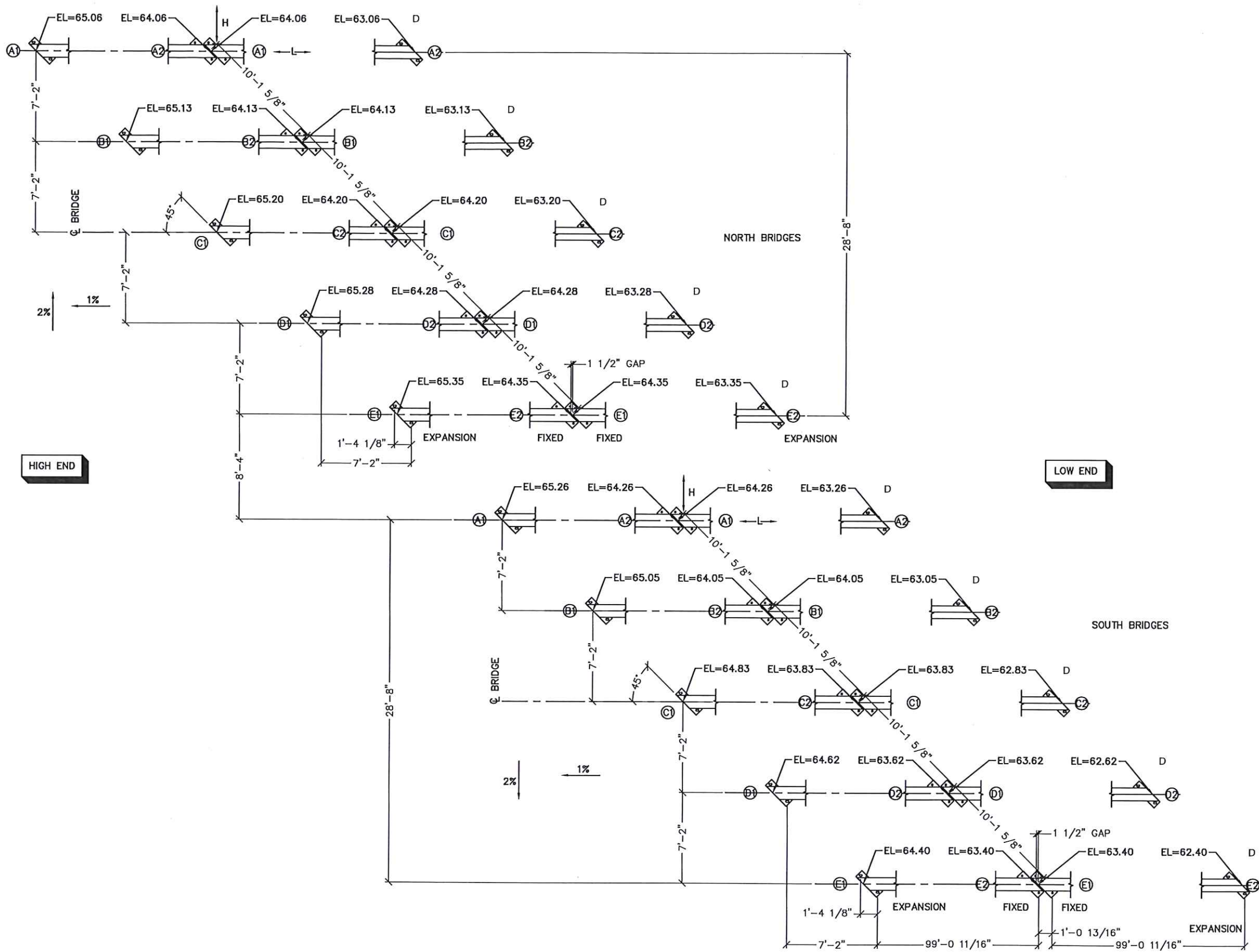
CONTECH
 ENGINEERED SOLUTIONS LLC
 www.conteches.com
 10000 Cr 16, Denver, CO 80021
 800-328-2047 320-345-9126 320-360-3148 FAX

BIGR
 BRIDGE

DATE: 7/24/2020

DESIGNED: NBE	DRAWN: RDH
CHECKED: NBE	APPROVED: NBE
PROJECT No.: 621715	SEQUENCE No.: 030
SHEET: 5	OF 12

C:\AUTODESK\VAULT\WORKING\2020\BEAM\21715\CAD\FABRICATION\REV\AB-1\21715-030 REV.0.DWG 10/28/2021 12:24 PM



ANCHOR BOLT LAYOUT
(ELEVATIONS ARE AT BEARING SEATS)

CONTECH
FABRICATION
DRAWING



The design and information shown on this drawing is the property of Contech Engineered Solutions, LLC and is to be used only for the project and location specified. Contech Engineered Solutions, LLC is not responsible for any errors or omissions in this drawing. Contech Engineered Solutions, LLC expressly disclaims any liability or responsibility for such use.

If discrepancies between the supplied information upon which the drawing is based and actual field conditions are discovered, the user must immediately notify Contech in writing. Contech will not be held responsible for any delays or costs incurred by the user as a result of such notification. Contech accepts no liability for designs based on misleading, incomplete or inaccurate information supplied by others.

MARK	DATE	REVISION DESCRIPTION
AB-1	10/29/2021	AS-BUILT FINALS
AB	9/28/2021	AS-BUILT FINALS
E0	7/22/2021	APPROVED FOR CONSTRUCTION
		BY

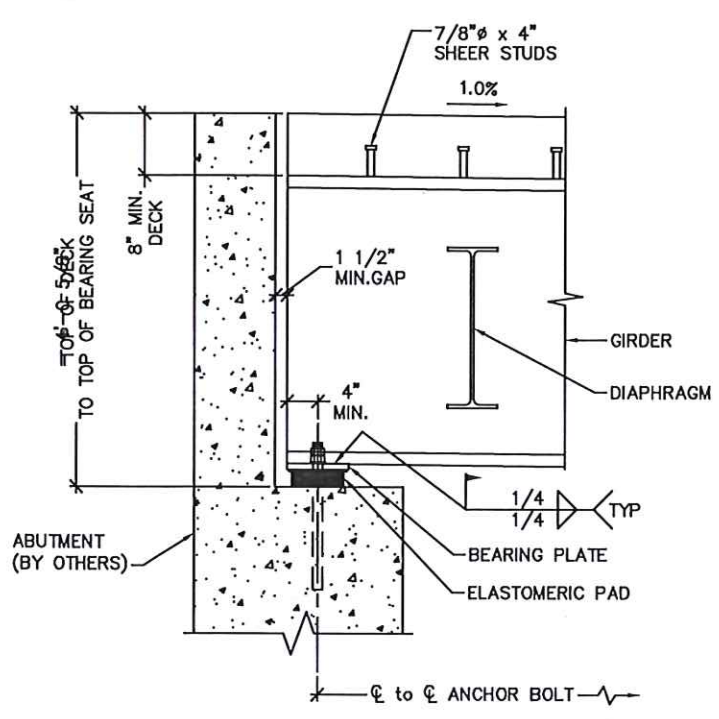
100'-0" x 30'-0"
MESA TOP DRIVE SOUTH BRIDGE
ELITE PROPERTIES OF AMERICA, INC
FOUNTAIN, CO

CONTECH
ENGINEERED SOLUTIONS LLC
www.conteches.com
15000 E 16th Avenue, CO 80031
800-328-3047 320-342-9120 320-560-3148 FAX

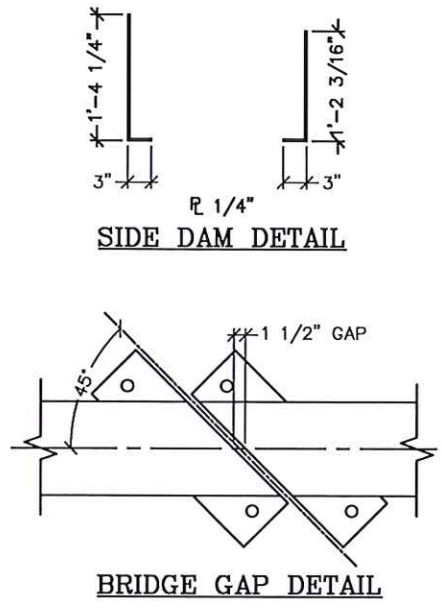
BIG R
BRIDGE

DATE:	7/24/2020	
DESIGNED:	NBE	DRAWN: RDH
CHECKED:	NBE	APPROVED: NBE
PROJECT No.:	621715	SEQUENCE No.: 030
SHEET:	6 OF 12	

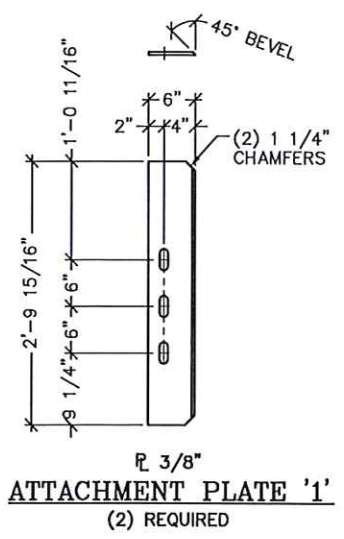
C:\AUTODESK\VAULT\WORKING\2020\BEAM\621715\CAD\FABRICATION\REV\AB-11621715-030 REV.A.DWG 10/29/2021 12:24 PM



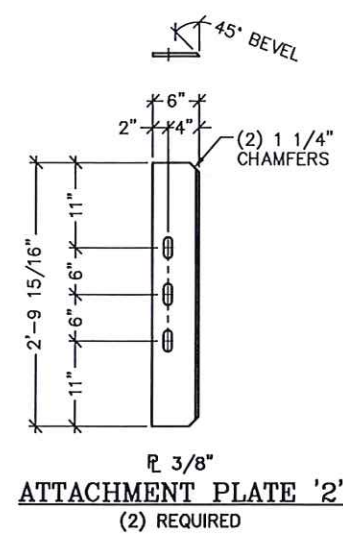
BEARING DETAIL



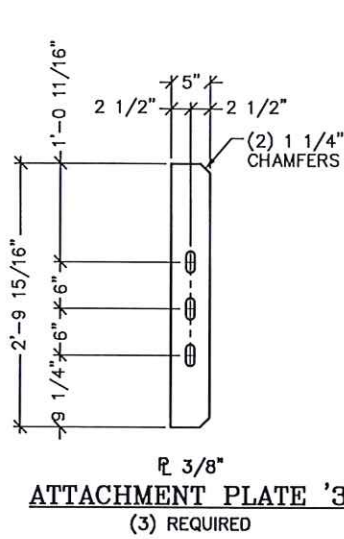
BRIDGE GAP DETAIL



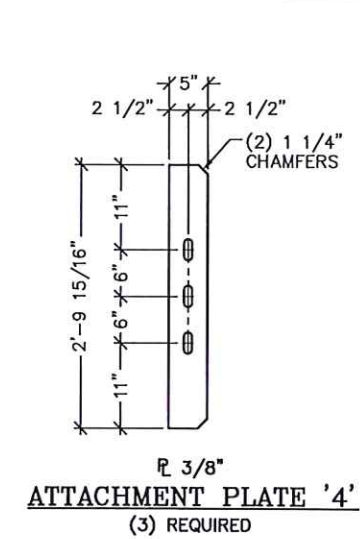
ATTACHMENT PLATE '1'
(2) REQUIRED



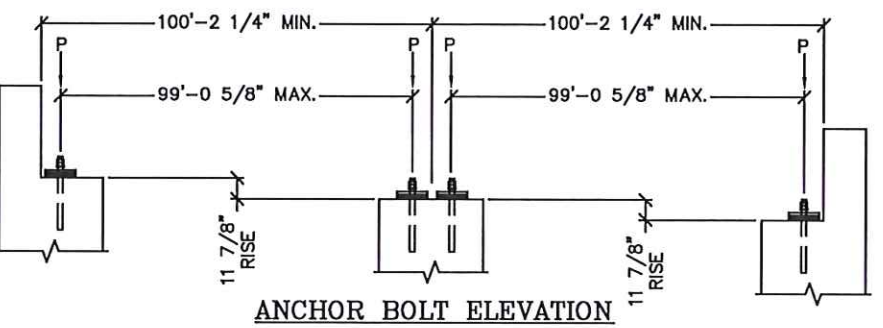
ATTACHMENT PLATE '2'
(2) REQUIRED



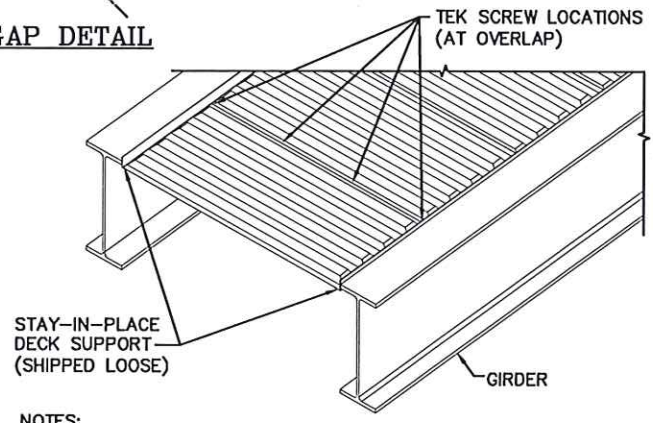
ATTACHMENT PLATE '3'
(3) REQUIRED



ATTACHMENT PLATE '4'
(3) REQUIRED

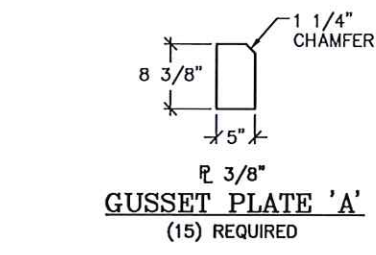


ANCHOR BOLT ELEVATION

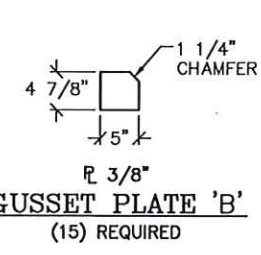


NOTES:
1) STAY-IN-PLACE DECK PANS TO BE ATTACHED IN THE FIELD TO THE SUPPC ANGLE WITH SELF-TAPPING TEK SCREWS PLACED AT THE FOUR PAN CORNERS AND AT THE 1/3 POINTS ALONG THE LONGITUDINAL OVERLAPS. (4 PER SHEET)

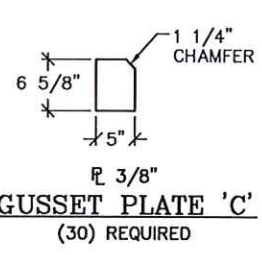
TYPICAL STAY-IN-PLACE DECK MOUNTING DETAIL



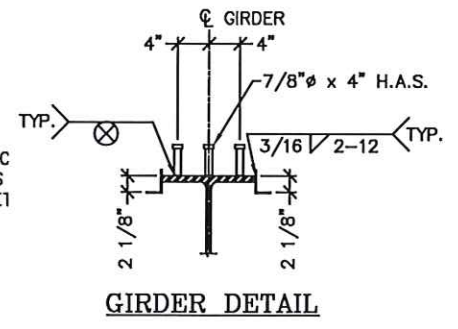
GUSSET PLATE 'A'
(15) REQUIRED



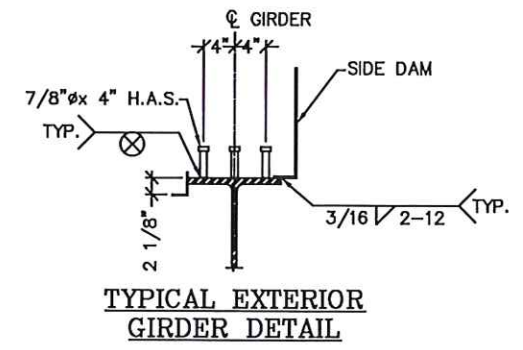
GUSSET PLATE 'B'
(15) REQUIRED



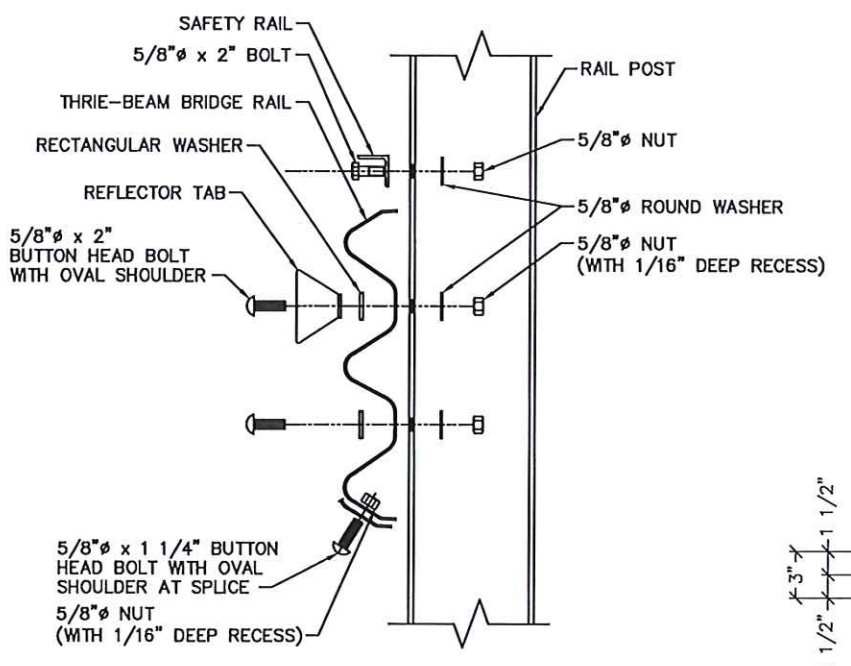
GUSSET PLATE 'C'
(30) REQUIRED



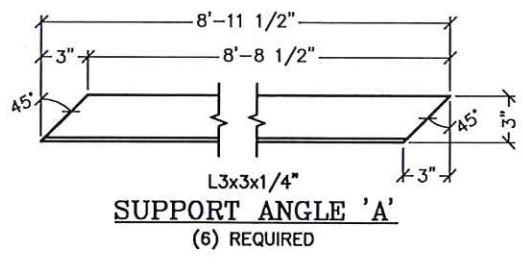
GIRDER DETAIL



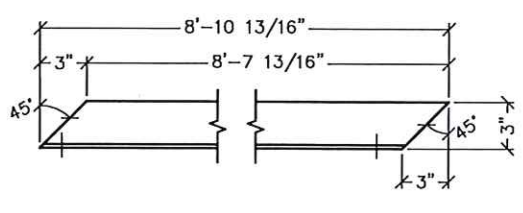
TYPICAL EXTERIOR GIRDER DETAIL



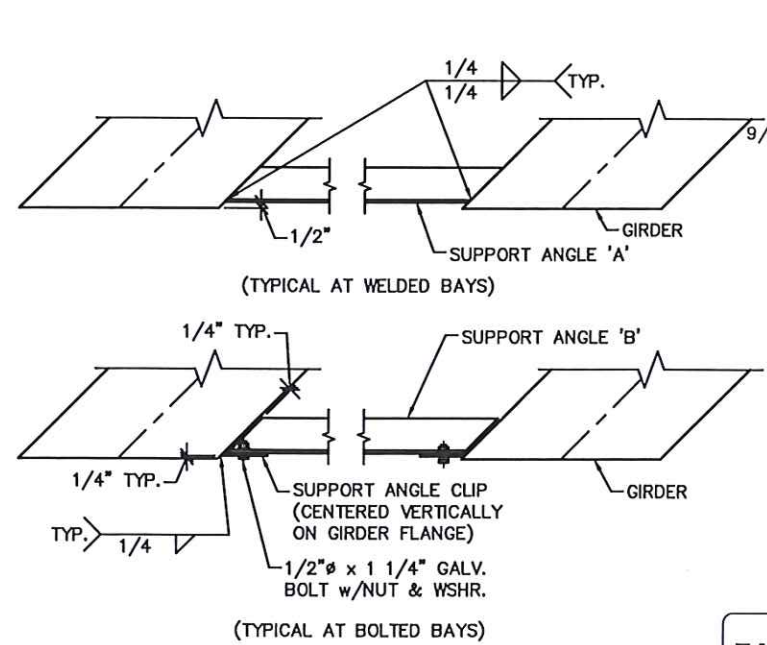
THREE-BEAM RAIL ATTACHMENT DETAIL
(W 8x18 POSTS)



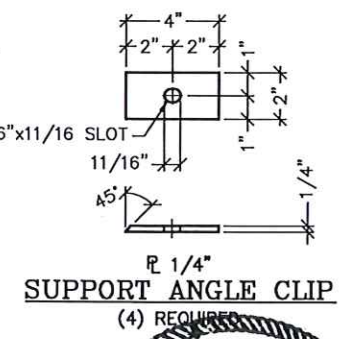
SUPPORT ANGLE 'A'
(6) REQUIRED



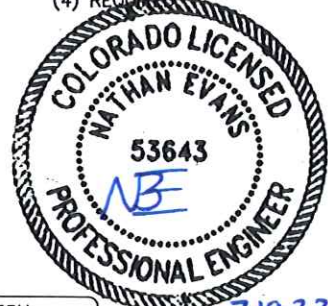
SUPPORT ANGLE 'B'
(2) REQUIRED



S.I.P. DECKING END SUPPORT DETAILS



SUPPORT ANGLE CLIP
(4) REQUIRED



CONTECH FABRICATION DRAWING



The design and information shown on this drawing is the property of Contech Engineered Solutions, LLC ("Contech"). Neither this drawing, nor any part thereof, is to be used, copied, or reproduced in any form without the prior written consent of Contech. Failure to comply is done at the user's own risk and Contech expressly disclaims any liability or responsibility for such use.
If discrepancies between the supplied information upon which the drawing is based and actual field conditions are noted, the user must report to Contech immediately for re-evaluation of the design. Contech does not accept responsibility for any errors, omissions, incomplete or inaccurate information supplied by others.

MARK	DATE	REVISION DESCRIPTION
AB-1	10/29/2021	AS-BUILT FINALS
AB	9/28/2021	AS-BUILT FINALS
ED	7/22/2021	APPROVED FOR CONSTRUCTION
		BY

100'-0" x 30'-0"
MESA TOP DRIVE SOUTH BRIDGE
ELITE PROPERTIES OF AMERICA, INC
FOUNTAIN, CO

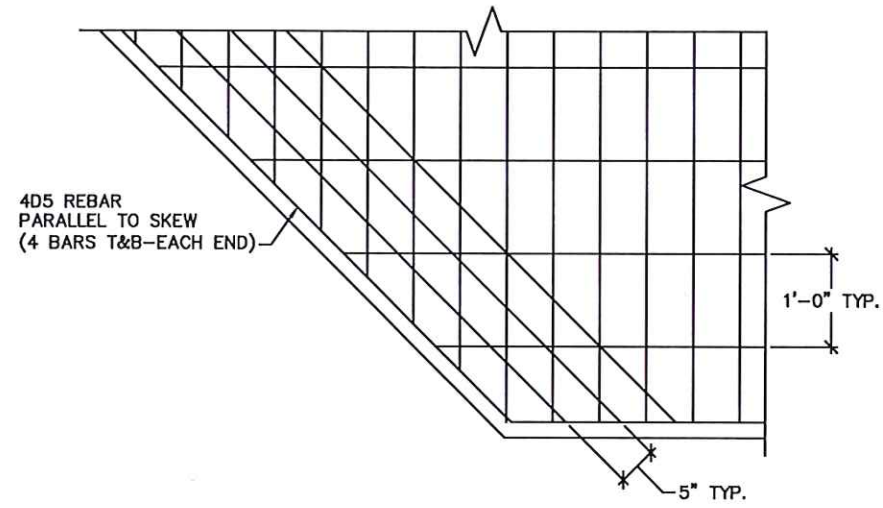
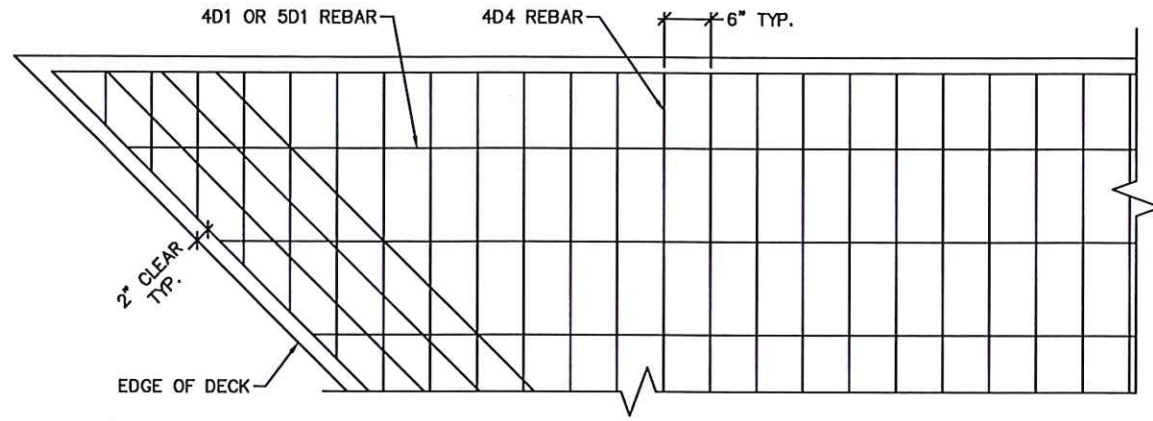
CONTECH
ENGINEERED SOLUTIONS LLC
www.conteches.com
10002 Cr 16 Greeley, CO 80031
800-328-2047 303-500-3148 FAX
BIG R
BRIDGE

DATE: 7/24/2020

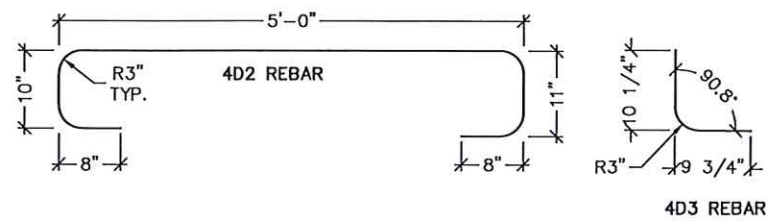
DESIGNED: NBE	DRAWN: RDH
CHECKED: NBE	APPROVED: NBE

PROJECT No.: 621715 SEQUENCE No.: 030
SHEET: 7 OF 12

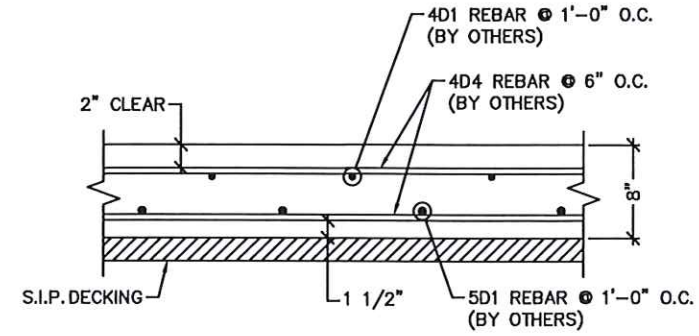
C:\AUTODESK VAULT\WORKING\2020\BEAM62171\5\CAD\FABRICATION\REV AB-162171-5-030 REV-0.DWG 10/29/2021 12:24 PM



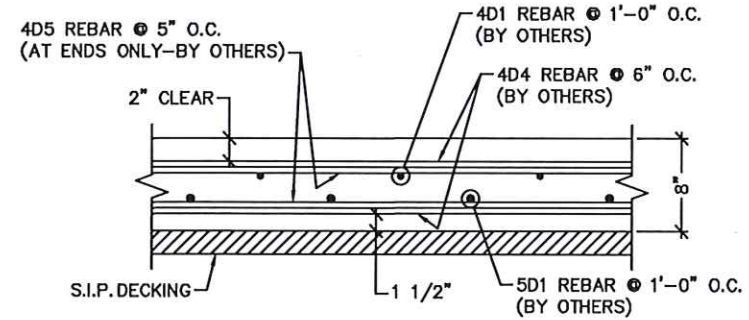
END REBAR LAYOUT



BENT REBAR DETAILS



TYPICAL DECK SECTION



TYPICAL DECK SECTION AT ENDS

- NOTES:
 1. ALL CONCRETE & REBAR BY OTHERS
 2. ALL QUANTITIES ARE FOR ONE BRIDGE

REBAR SCHEDULE					
MARK	TYPE	QUANTITY	LENGTH	REMARKS	
4D1	STRAIGHT	38	99'-6"	EPOXY*	
4D2	BENT	202	8'-1"	EPOXY	
4D3	BENT	202	1'-8"	EPOXY	
4D4	STRAIGHT	405	29'-7"	EPOXY	
4D5	STRAIGHT	16	41'-11"	EPOXY	
5D1	STRAIGHT	31	99'-6"	EPOXY*	

DIGIT PRECEDING LETTER DENOTES SIZE OF REBAR
 * SEE CONCRETE NOTE 6 ON PG. 2 FOR SPLICING

CONTECH
 FABRICATION
 DRAWING



The design and information shown on this drawing is provided as a service to the project owner, engineer and contractor by Contech Engineered Solutions, LLC ("Contech"). Neither this drawing, nor any part thereof, is to be used for any other project without the prior written consent of Contech. Failure to comply is done at the user's own risk and Contech expressly disclaims any liability or responsibility for such use.
 If discrepancies between the supplied information upon which the drawing is based and actual field conditions are noted, the contractor shall immediately report these discrepancies to Contech for re-evaluation of the design. Contech shall not be responsible for any delays, omissions, incomplete or inaccurate information supplied by others.

DATE	REVISION DESCRIPTION	BY
7/22/2021	APPROVED FOR CONSTRUCTION	TLF
9/28/2021	AS-BUILT FINALS	TLF
10/29/2021	AS-BUILT FINALS	TLF

100'-0" x 30'-0"
 MESA TOP DRIVE SOUTH BRIDGE
 ELITE PROPERTIES OF AMERICA, INC
 FOUNTAIN, CO

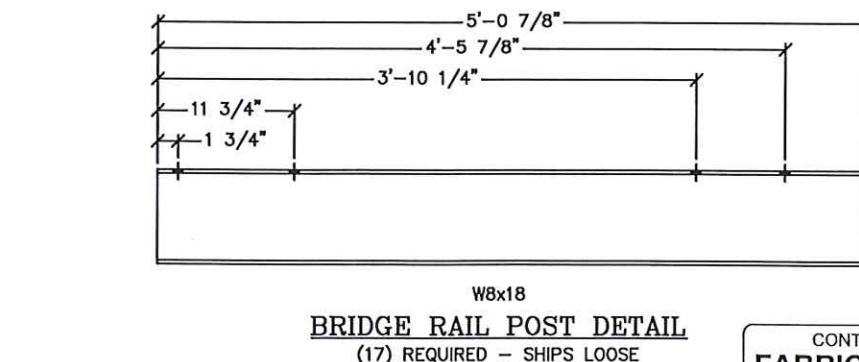
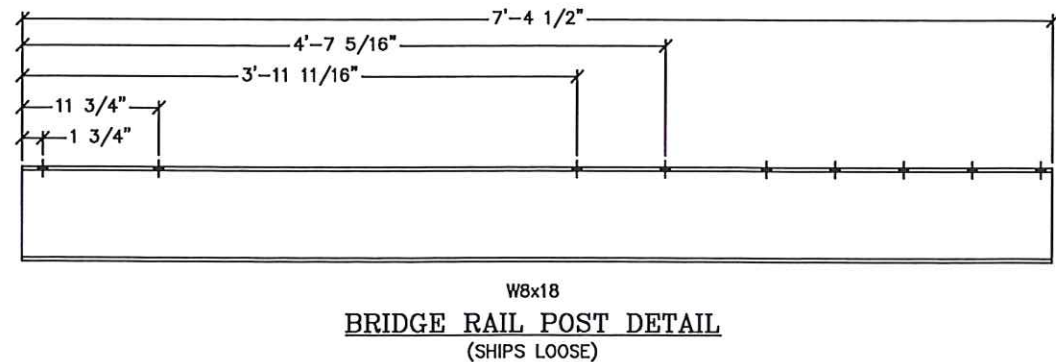
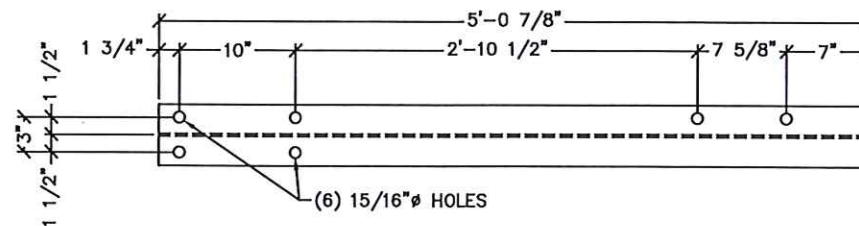
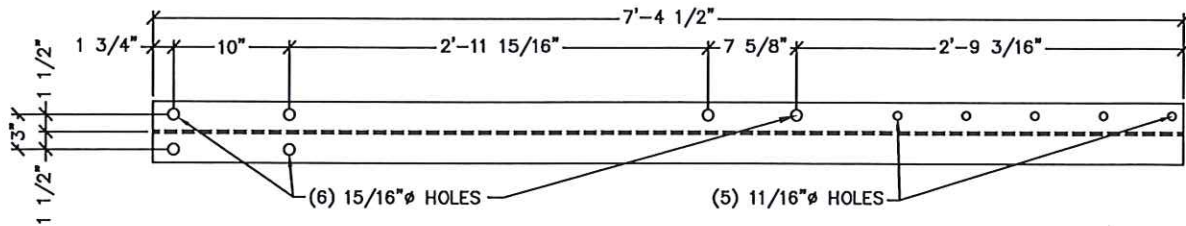
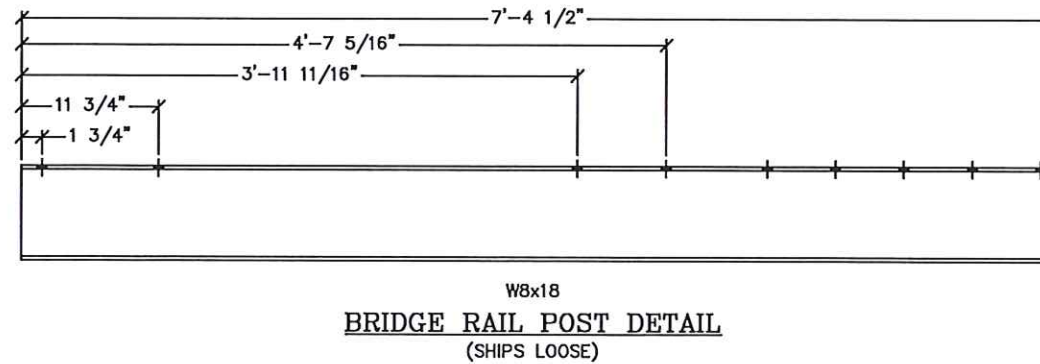
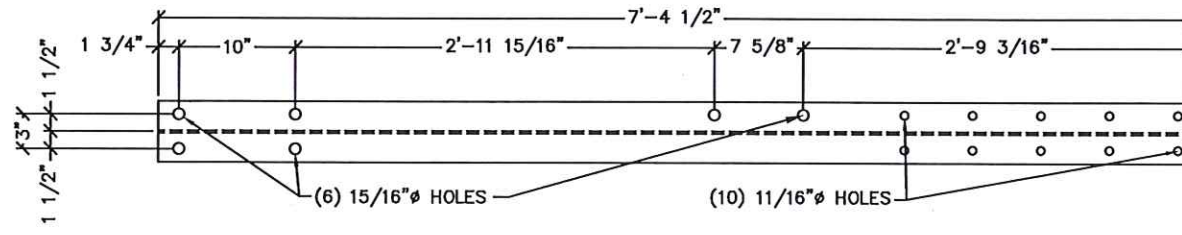
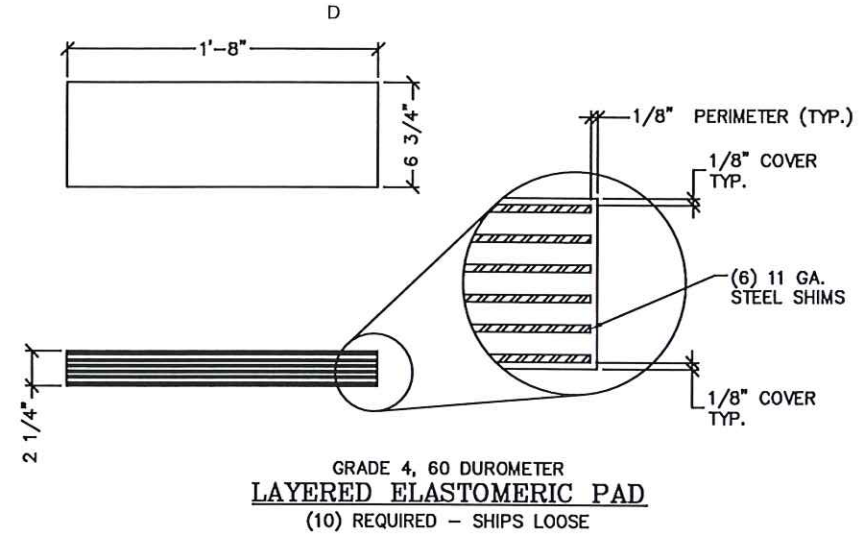
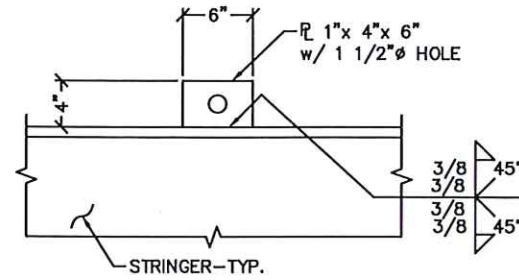
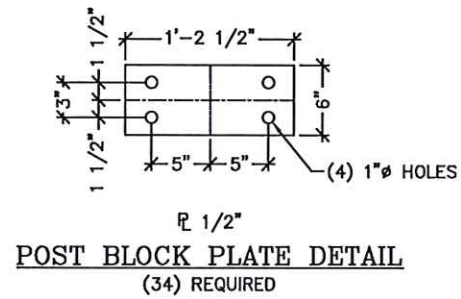
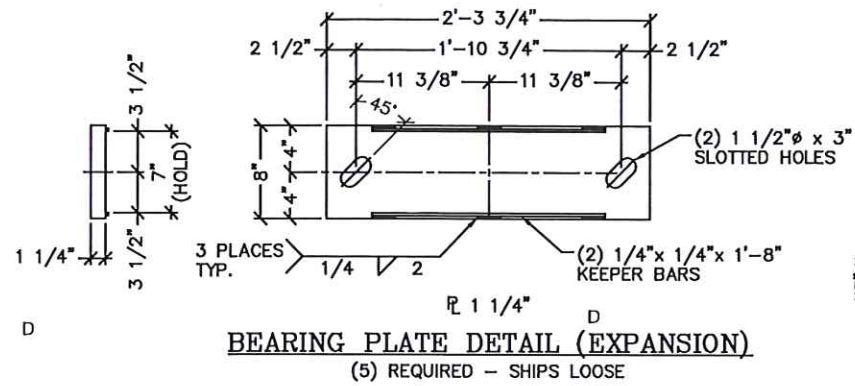
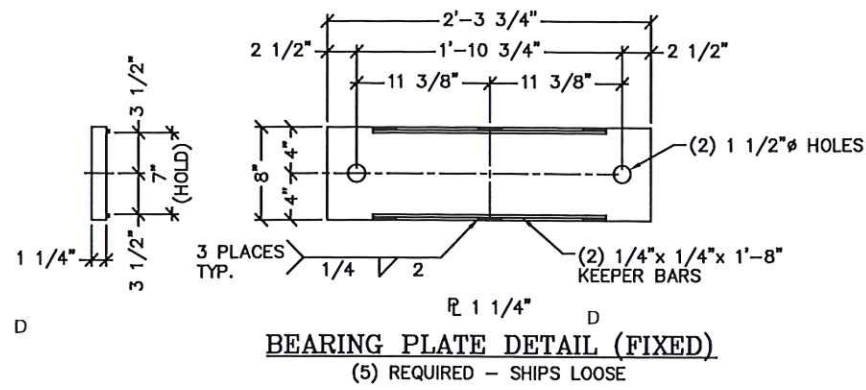
CONTECH
 ENGINEERED SOLUTIONS LLC
 www.conteches.com
 10000 Cr 16, Greeley, CO 80631
 800-328-2047 303-566-3148 FAX

BIG R
 BRIDGE

DATE: 7/24/2020

DESIGNED: NBE	DRAWN: RDH
CHECKED: NBE	APPROVED: NBE
PROJECT No.: 621715	SEQUENCE No.: 030
SHEET: 8	OF 12

C:\AUTODESK VAWLT\WORKING\2020\BEAM62175\CAD\FABRICATION\REV\AB-162175-000 REV-0.DWG 10/29/2021 12:24 PM



CONTECH
FABRICATION
DRAWING



The design and information shown on this drawing is provided as a service to the project owner and contractor by Contech Engineering Solutions, LLC ("Contech"). Neither this drawing, nor any part thereof, is to be used for any other project without the prior written consent of Contech. Failure to obtain such consent may result in Contech being held liable for any liability or responsibility for such use.

If discrepancies between the supplied information upon which the drawing is based and actual field conditions are discovered, the contractor shall immediately notify Contech in writing. Contech shall not be responsible for re-evaluation of the design. Contech does not warrant the accuracy of the information supplied by others.

NO.	DATE	REVISION DESCRIPTION	BY
AB-1	10/29/2021	AS-BUILT FINALS	TLF
AB	9/28/2021	AS-BUILT FINALS	TLF
E0	7/22/2021	APPROVED FOR CONSTRUCTION	TLF
MARK			

100'-0" x 30'-0"
MESA TOP DRIVE SOUTH BRIDGE
ELITE PROPERTIES OF AMERICA, INC
FOUNTAIN, CO

CONTECH
ENGINEERED SOLUTIONS LLC
www.conteches.com
10000 Cr 66, Greeley, CO 80031
800-328-5047 303-568-3148 FAX

BIG R
BRIDGE

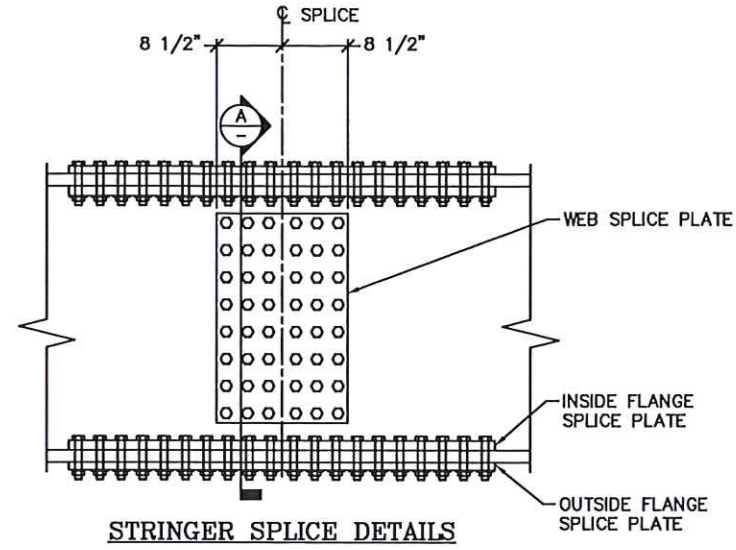
DATE: 7/24/2020

DESIGNED: NBE	DRAWN: RDH
CHECKED: NBE	APPROVED: NBE

PROJECT No.: 621715 SEQUENCE No.: 030
SHEET: 9 OF 12

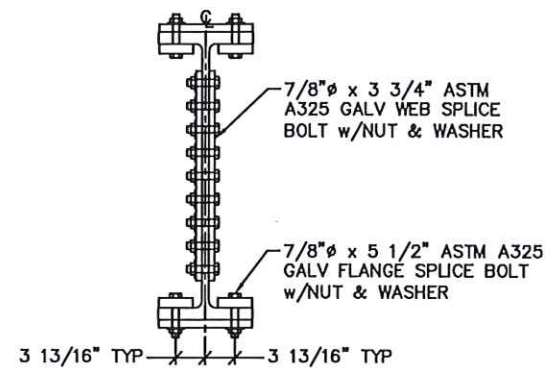
C:\AUTODESK VALLT\WORKING\2020\BEM\621715\CADD\FABRICATION\REV AB-1021715-030 REV A.DWG 10/29/2021 12:25 PM

MEMBERS	QTY	THICKNESS	SIZE	HOLES	BOLTS w/NUT & WASHER	BOLT QTY
WEB SPLICE PLATE	10	3/4"	1'-5" x 2'-3"	15/16"	7/8"φ x 3 3/4" A325 GALV	240
INSIDE BTM FLANGE SPLICE PLATE	10	1 1/4"	4 3/8" x 4'-7"	15/16"	-	-
OUTSIDE BTM FLANGE SPLICE PLATE	5	1"	1'-0" x 4'-7"	15/16"	7/8"φ x 5 1/2" A325 GALV	200
INSIDE TOP FLANGE SPLICE PLATE	10	1 1/4"	4 3/8" x 4'-7"	15/16"	-	-
OUTSIDE TOP FLANGE SPLICE PLATE	5	1"	1'-0" x 4'-7"	15/16"	7/8"φ x 5 1/2" A325 GALV	200



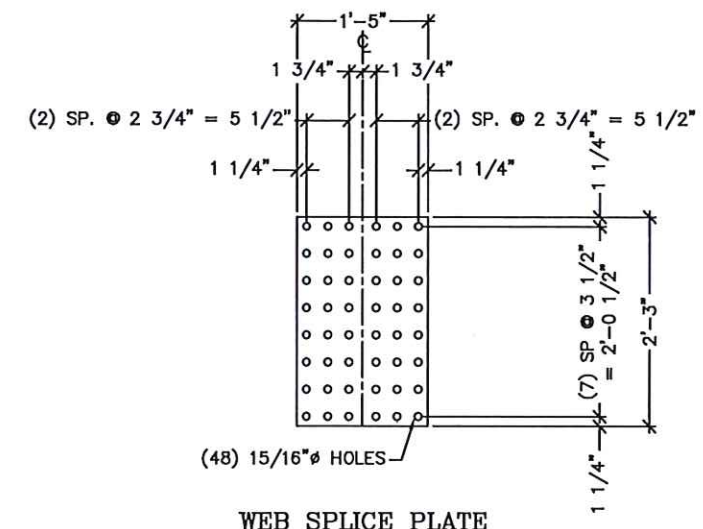
STRINGER SPLICE DETAILS

SHOP NOTE:
15/16"φ HOLES IN STRINGER FLANGE AND WEB

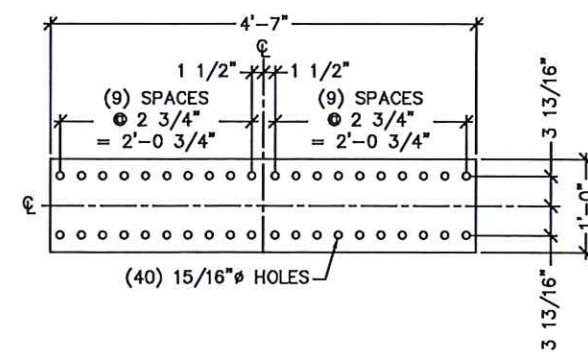


SECTION A

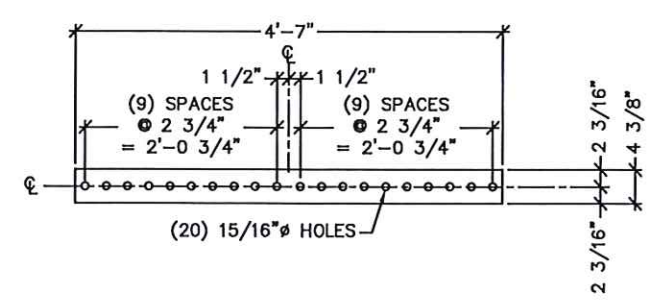
CONTRACTOR NOTE:
FIELD WELDING TO BE PERFORMED BY A WELDER CERTIFIED PER AWS D1.5 BRIDGE WELDING CODE.



WEB SPLICE PLATE



OUTSIDE TOP & BTM FLANGE SPLICE PLATE



INSIDE TOP & BTM FLANGE SPLICE PLATE

CONTECH
FABRICATION
DRAWING



The design and information shown on this drawing is the property of Contech Engineered Solutions, LLC and contractor by Contech Engineered Solutions, LLC ("Contech"). Neither the drawing, nor any part thereof, is to be used, copied, or reproduced in any way without the prior written consent of Contech. Failure to comply is done at the user's own risk and Contech expressly disclaims any liability or responsibility for such use.
If discrepancies between the supplied information and the drawing are noted, the drawing shall prevail. These discrepancies must be reported to Contech immediately for re-evaluation of the design. Contech does not warrant the accuracy or completeness of the information supplied or the information supplied by others.

DATE	REVISION DESCRIPTION	BY
10/29/2021	AS-BUILT FINALS	TLF
9/28/2021	AS-BUILT FINALS	TLF
7/22/2021	APPROVED FOR CONSTRUCTION	TLF
		BY

100'-0" x 30'-0"
MESA TOP DRIVE SOUTH BRIDGE
ELITE PROPERTIES OF AMERICA, INC
FOUNTAIN, CO

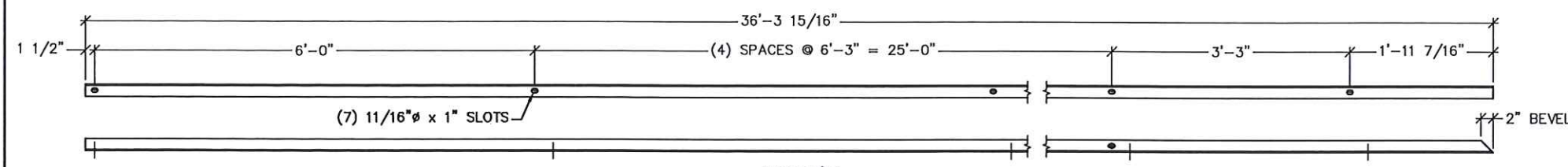
CONTECH
ENGINEERED SOLUTIONS LLC
www.conteches.com
15062 Cr 66 Drway, CO 80031
800-328-2047 320-345-9120 320-580-3148 FAX

BIG BIRD
BRIDGE

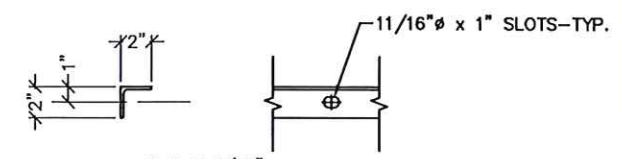
DATE: 7/24/2020

DESIGNED: NBE	DRAWN: RDH
CHECKED: NBE	APPROVED: NBE
PROJECT No.: 621715	SEQUENCE No.: 030
SHEET: 10 OF 12	

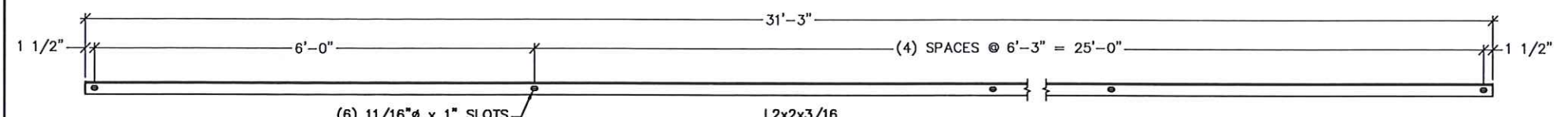
C:\AUTODESK VAULT\WORKING\2020\BEM\621715\CAD\FABRICATION\REV\AB-1021715-000 REV.0.DWG 10/29/2021 12:25 PM



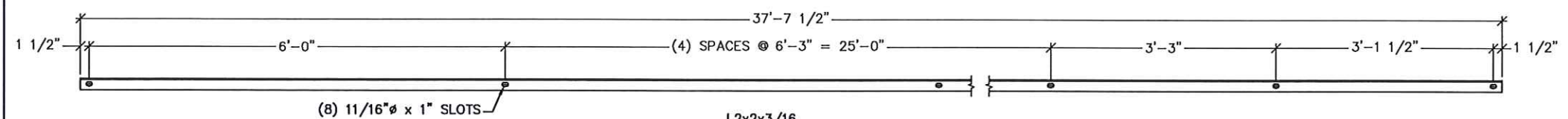
**L2x2x3/16
SAFETY RAIL #1 DETAIL**
(20) REQUIRED - SHIPS LOOSE



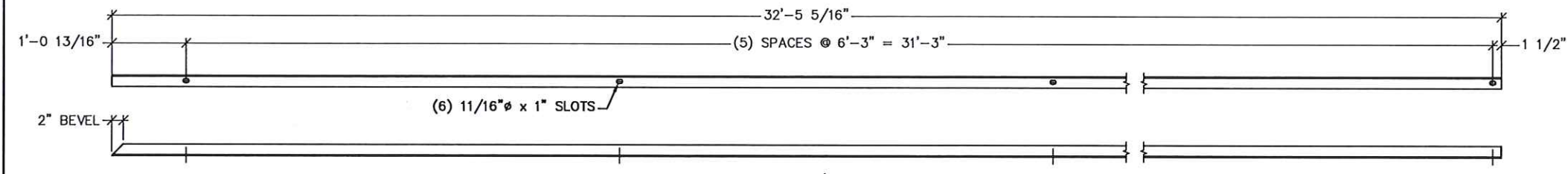
**L2x2x3/16"
ANGLE SLOT DETAIL**



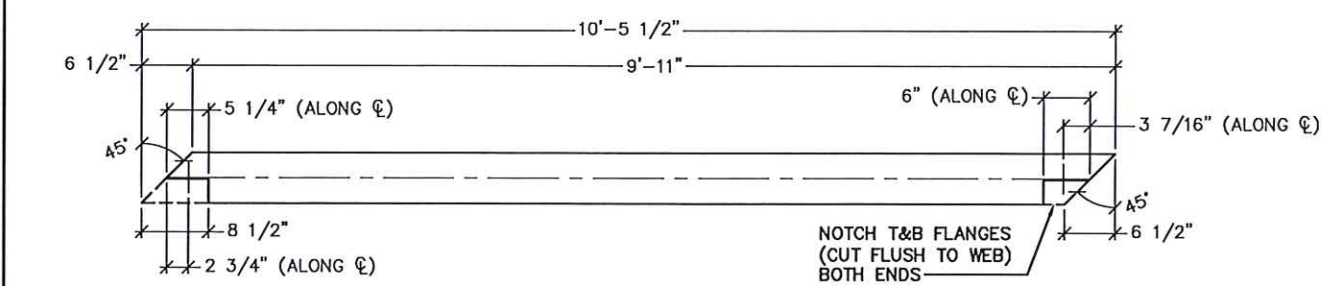
**L2x2x3/16
SAFETY RAIL #2 DETAIL**
(60) REQUIRED - SHIPS LOOSE



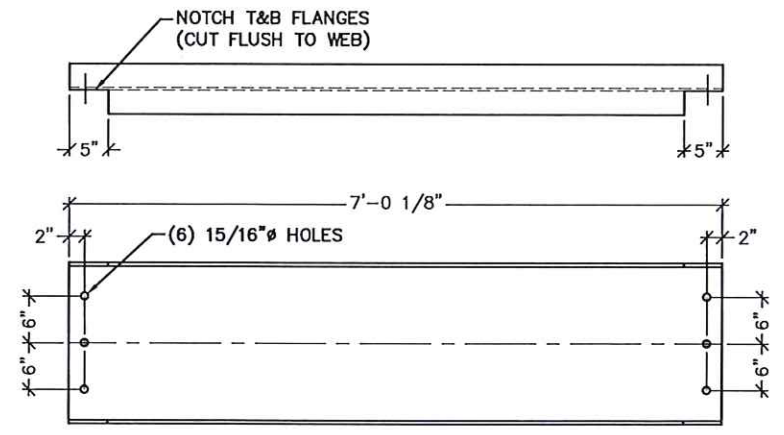
**L2x2x3/16
SAFETY RAIL #3 DETAIL**
(20) REQUIRED - SHIPS LOOSE



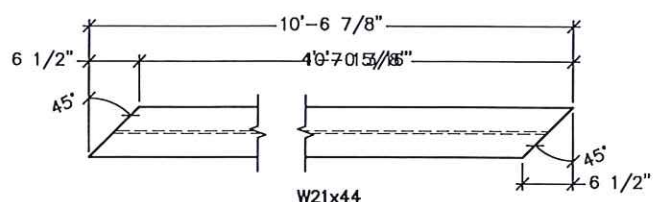
**L2x2x3/16
SAFETY RAIL #4 DETAIL**
(20) REQUIRED - SHIPS LOOSE



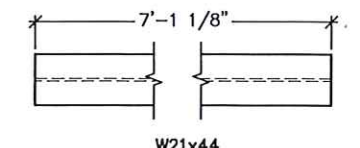
**W21x44
BOLTED MID DIAPHRAGM DETAIL**
(2) REQUIRED - SHIPS LOOSE



**W21x44
BOLTED MID DIAPHRAGM DETAIL**
(3) REQUIRED - SHIPS LOOSE



**W21x44
WELDED END DIAPHRAGM DETAIL**
(6) REQUIRED - SHIPS LOOSE



**W21x44
WELDED MID DIAPHRAGM DETAIL**
(9) REQUIRED - SHIPS LOOSE

CONTECH
FABRICATION
DRAWING



The design and information shown on this drawing is the property of Contech Engineered Solutions, LLC and is to be used only for the project and location specified. Contech Engineered Solutions, LLC is not responsible for any errors or omissions in this drawing. The user of this drawing is responsible for obtaining all necessary permits and approvals. Contech Engineered Solutions, LLC expressly disclaims any liability or responsibility for any damages, including consequential, special, or punitive damages, arising from the use of this drawing. If discrepancies between the supplied information and the drawing are noted, the user shall be responsible for resolving the same. Contech Engineered Solutions, LLC is not responsible for any errors or omissions in this drawing. The user of this drawing is responsible for obtaining all necessary permits and approvals. Contech Engineered Solutions, LLC expressly disclaims any liability or responsibility for any damages, including consequential, special, or punitive damages, arising from the use of this drawing.

DATE	BY	REVISION DESCRIPTION
10/29/2021	AS-BUILT FINALS	
9/28/2021	AS-BUILT FINALS	
7/22/2021	APPROVED FOR CONSTRUCTION	

100'-0" x 30'-0"
MESA TOP DRIVE SOUTH BRIDGE
ELITE PROPERTIES OF AMERICA, INC
FOUNTAIN, CO

CONTECH
ENGINEERED SOLUTIONS LLC
www.conteches.com
1000 Cr. 16, Greeley, CO 80631
800-328-3047 320-344-9120 320-590-5148 FAX

BIG R
BRIDGE

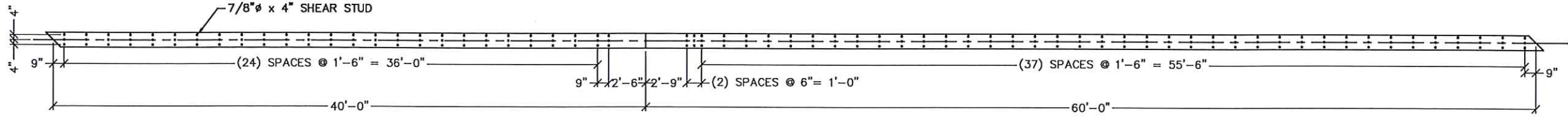
DATE: 7/24/2020

DESIGNED: NBE	DRAWN: RDH
CHECKED: NBE	APPROVED: NBE

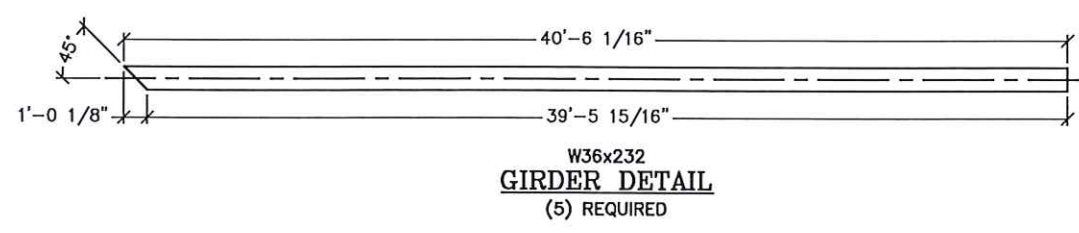
PROJECT No.: 621715 SEQUENCE No.: 030

SHEET: 11 OF 12

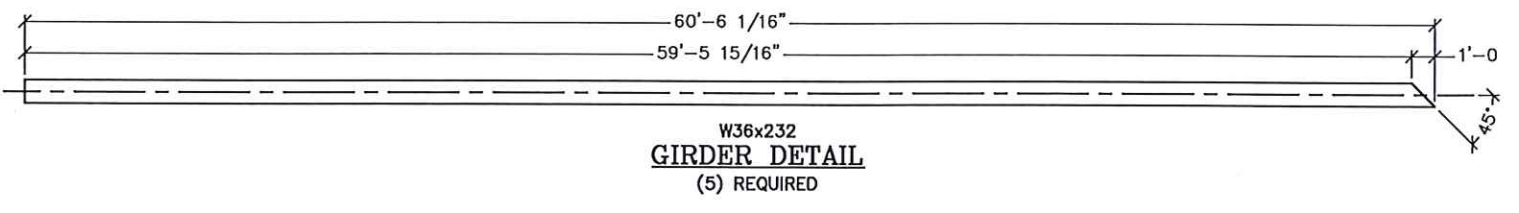
C:\AUTODESK VAULT WORKING\2020\BEM621715\CAD\FABRICATION\REV\AB-1621715-030 REV:0.DWG 10/29/2021 12:25 PM



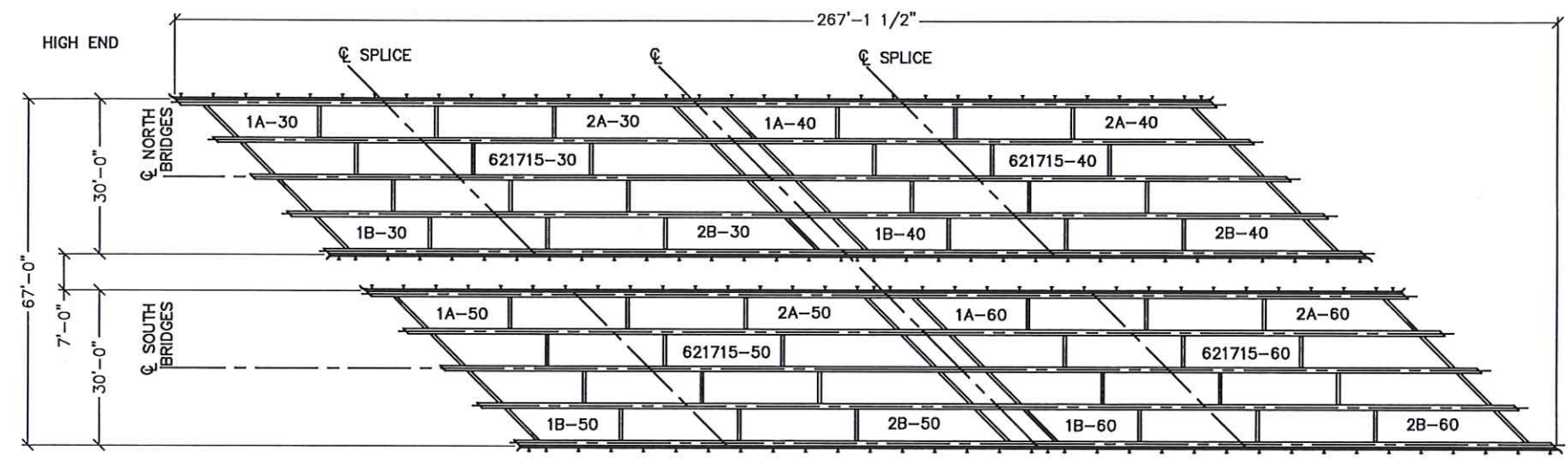
SHEAR STUD DETAIL



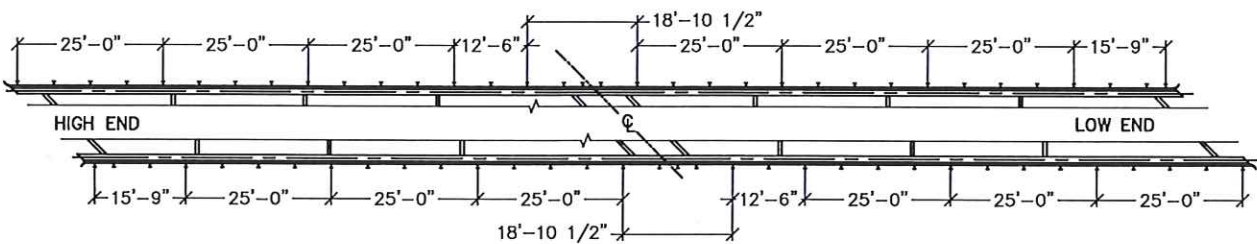
**W36x232 GIRDER DETAIL
(5) REQUIRED**



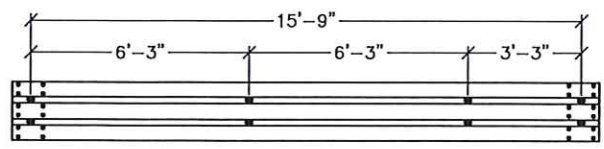
**W36x232 GIRDER DETAIL
(5) REQUIRED**



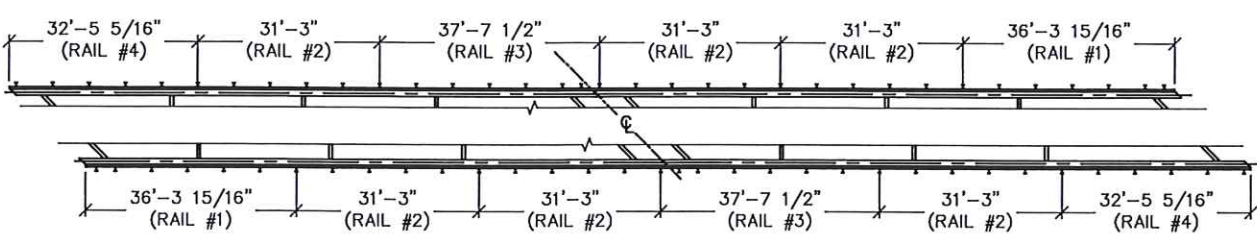
PROJECT LAYOUT



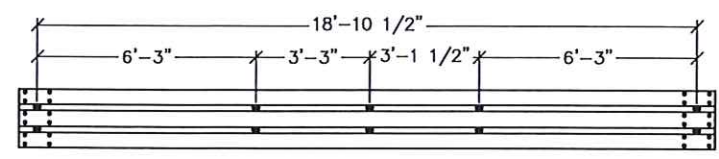
THRIE-BEAM BRIDGE RAIL LAYOUT
TYPICAL 621715-30 & 621715-40
TYPICAL 621715-50 & 621715-60



END THRIE-BEAM RAIL LAYOUT
(TYPICAL AT SHORT CORNER OF EACH BRIDGE)
(4) REQUIRED



ANGLE SAFETY RAIL LAYOUT
TYPICAL 621715-30 & 621715-40
TYPICAL 621715-50 & 621715-60



THRIE-BEAM RAIL AT BRIDGE GAP LAYOUT
(TYPICAL BETWEEN 621715-30 & 621715-40)
(TYPICAL BETWEEN 621715-50 & 621715-60)
(4) REQUIRED

NOTE: ALL RAIL SECTIONS NOT SHOWN ARE STANDARD MILL PUNCH.

CONTECH FABRICATION DRAWING



This design and information shall be the property of Contech and shall not be used, copied, or reproduced in any form without the prior written consent of Contech. Failure to comply is done at the user's own risk and Contech expressly disclaims any liability or responsibility for such use.
If discrepancies between the supplied information upon which the drawing is based and actual field conditions are noted, the user shall be responsible for these discrepancies and shall be responsible for immediately re-evaluation of the design. Contech does not warrant the accuracy of the design, nor does it incorporate or measure information supplied by others.

NO.	DATE	REVISION DESCRIPTION	BY
AB-1	10/29/2021	AS-BUILT FINALS	TLF
AB	9/28/2021	AS-BUILT FINALS	TLF
EO	7/22/2021	APPROVED FOR CONSTRUCTION	TLF
MARK			

100'-0" x 30'-0"
MESA TOP DRIVE SOUTH BRIDGE
ELITE PROPERTIES OF AMERICA, INC
FOUNTAIN, CO

CONTECH
ENGINEERED SOLUTIONS LLC
www.contechES.com
10000 C-168 Dr., Fountain, CO 80031
800-338-3047 303-442-9120 303-568-3148 FAX

BIG BIRD
BRIDGE

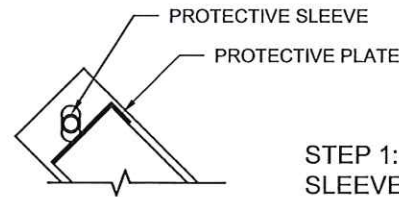
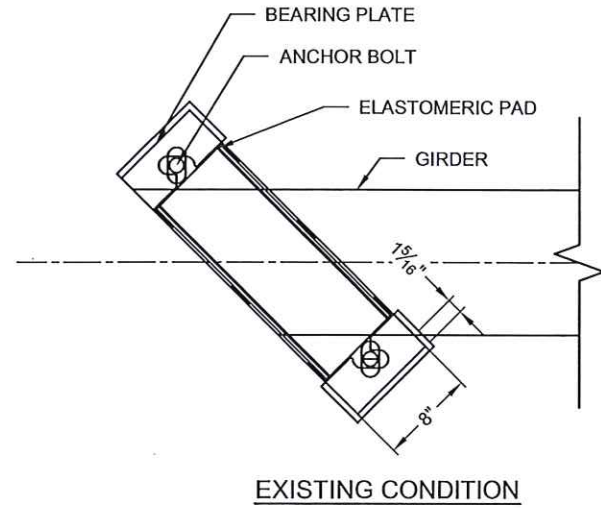
DATE: 7/24/2020

DESIGNED: NBE	DRAWN: RDH
CHECKED: NBE	APPROVED: NBE

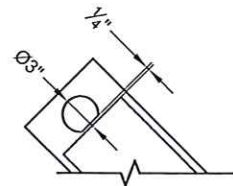
PROJECT No.: 621715 SEQUENCE No.: 030
SHEET: 12 OF 12

GENERAL NOTES:

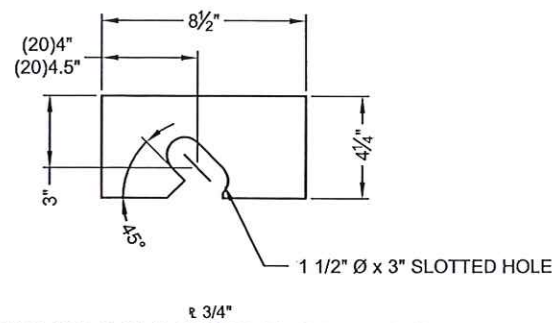
- CONTECH ENGINEERED SOLUTIONS HAS AISC QUALITY CERTIFIED BRIDGE FABRICATION - ADVANCED (MAJOR) WITH A FRACTURE CRITICAL AND SOPHISTICATED PAINT ENDORSEMENT.
- MATERIALS: (UNLESS NOTED OTHERWISE):
 - STRUCTURAL STEEL: ASTM A588 WEATHERING STEEL
- ALL WELDING SHALL USE THE GAS METAL ARC WELDING OR FLUX CORED ARC WELDING PROCESS.



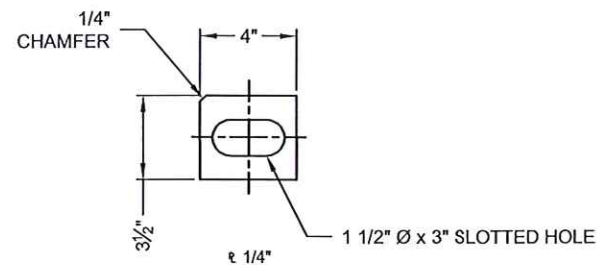
STEP 1: APPLY PROTECTIVE SLEEVE TO ANCHOR BOLT AND PLATE TO SIDE OF BEARING PAD



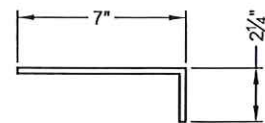
STEP 2: CUT 3" DIA. HOLE CENTERED AT ANCHOR BOLT TAKING CARE TO STAY 1/4" AWAY FROM ELASTOMERIC BEARING PAD.



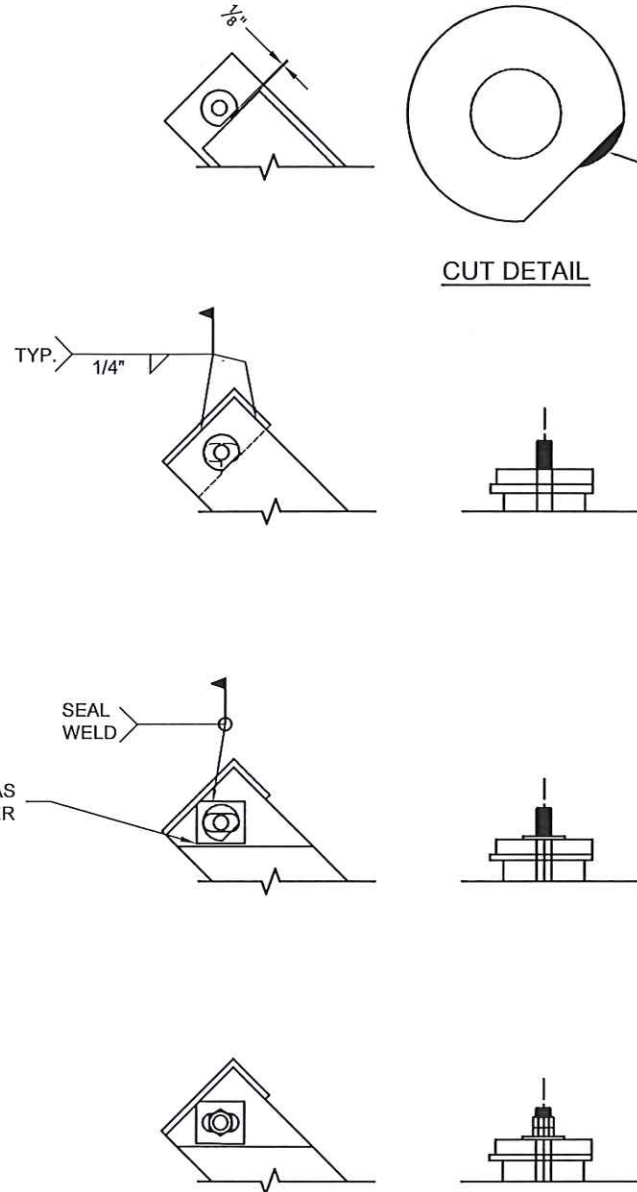
ANCHOR BOLT GUIDE PLATE DETAIL



COVER WASHER DETAIL



PROTECTIVE PLATE DETAIL



STEP 3: GRIND 1/8" AT TOP OF FLAT CUT TO PROVIDE FULL SLOT DIMENSIONS

STEP 4: INSERT ANCHOR BOLT GUIDE PLATE UNDERNEATH BEARING PLATE AND WELD ALONG EXPOSED SIDES.

STEP 5: PLACE COVER WASHER ON TOP OF BEARING PLATE AND SEAL WELD INTO PLACE.

STEP 6: REMOVE PROTECTIVE SLEEVE AND PLATE, INSTALL NUTS ON ANCHOR BOLTS PER ORIGINAL PLANS.



5-2-22



The design and information shown on this drawing is provided as a service to the project owner, engineer or contractor. It is not to be used, reproduced or modified in any manner without the prior written consent of Contech. Failure to do so may result in liability for damages. Contech expressly disclaims any liability or responsibility for such use.

If discrepancies between the supplied information upon which the drawing is based and actual field conditions are encountered as site work progresses, these discrepancies must be reported to Contech. Contech shall not be held responsible for any delays, accept no liability for designs based on missing, incomplete or inaccurate information supplied by others.

MARK	DATE	REVISION DESCRIPTION	BY
RP	4/29/2022	BRIDGE BEARING FIELD REPAIR	NBE
AB-1	10/29/2021	AS-BUILT FINALS	TLF
AB	9/28/2021	AS-BUILT FINALS	TLF
EO	7/22/2021	APPROVED FOR CONSTRUCTION	TLF

100'-0" x 30'-0"
MESA TOP DRIVE SOUTH BRIDGE
ELITE PROPERTIES of AMERICA, INC
FOUNTAIN, CO

CONTECH
ENGINEERED SOLUTIONS LLC
www.ContechES.com

BIG R
BRIDGE

DATE: 7/24/2020

DESIGNED: NBE	DRAWN: RDH
CHECKED: NBE	APPROVED: NBE
PROJECT No.: 621715	SEQUENCE No.:
SHEET:	1 OF 1