

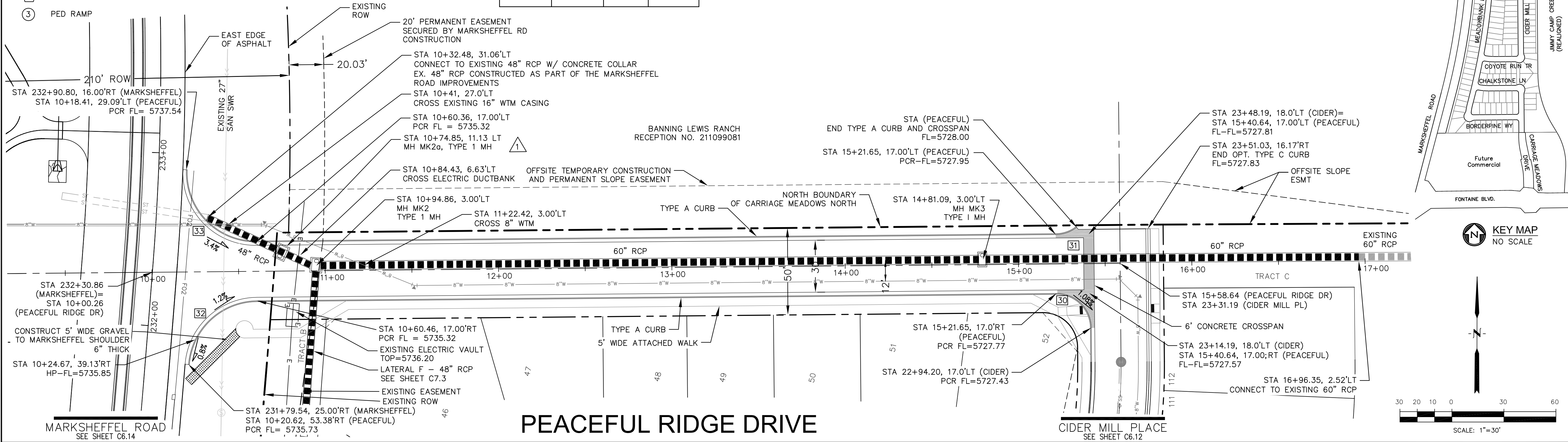
NOTES

- 1. ALL SPOT ELEVATIONS REFLECT FLOW LINE UNLESS OTHERWISE NOTED.
- 2. SEE GRADING PLANS FOR GRADING INFORMATION.
- 3. ALL STORM SEWER SHALL BE RCP, CL-III

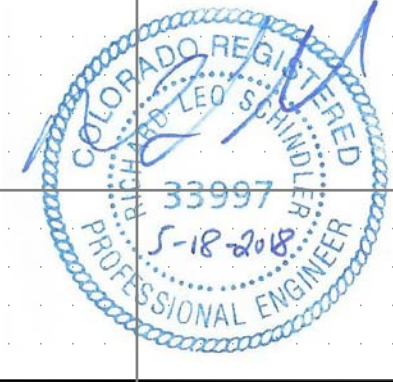
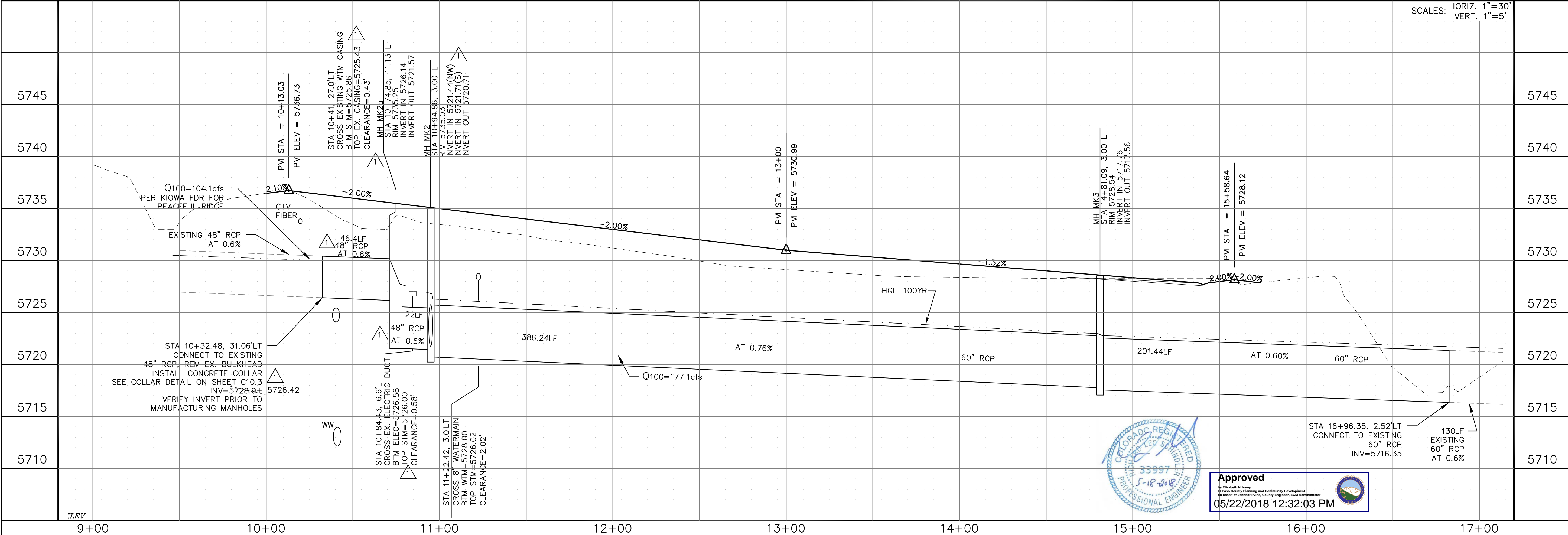
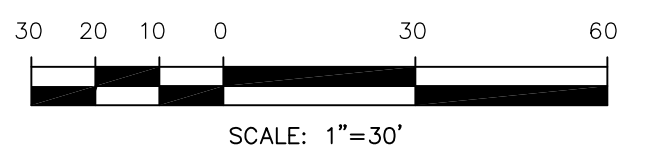
--- STREET IMPROVEMENT/SIDEWALK ACCESS EASEMENT

- 1 CURVE DATA ID
- 2 CURB TRANSITION
- 3 PED RAMP

CURVE NO.	LENGTH	RADIUS	DELTA
C30	31.41'	20.00	89°58'56"
C31	13.00'	20.00	37°14'21"
C32	59.21'	40.00	84°48'28"
C33	64.83'	40.00	95°51'24"



PEACEFUL RIDGE DRIVE



Approved
 05/22/2018 12:32:03 PM

CORE ENGINEERING GROUP
 15004 1ST AVE. S.
 BURNSVILLE, MN 55306
 PH: 719.570.1100
 CONTACT: RICHARD L. SCHINDLER, P.E.
 EMAIL: rich@cegi.com

DATE: 5/18/2018
 DESCRIPTION: ADD MH MK2s, REVISE 48" STM SEWER FROM EX. STM TO MH MK2

PREPARED FOR: **LORSON LLC.**
 212 N. WAHSATCH AVE., SUITE 301
 COLORADO SPRINGS, COLORADO 80903
 CONTACT: JEFF MARK

PROJECT: **CARRIAGE MEADOWS NORTH FILL NO. 1**
 FONTAINE BLVD. - CARRIAGE MEADOWS DR.
 EL PASO COUNTY, COLORADO

DRAWN: AZM
 DESIGNED: RLS
 CHECKED: RLS

STREET AND STORM PEACEFUL RIDGE DRIVE STA 10+00 TO 14+96.94

DATE: MARCH 7, 2018
 PROJECT NO.: 100.002
 SHEET NUMBER: **C6.13**
 TOTAL SHEETS: 41

P: 100.100.002_FINAL_CONSTR_ROWY_STORM-13.dwg, May 18, 2018 - 5:01pm