

LAZY Y AND ROCKIN J SUBDIVISION

LOCATED IN THE SOUTH HALF OF SECTION 7
TOWNSHIP 12 SOUTH, RANGE 63 WEST OF THE 6TH P.M.
STREET IMPROVEMENT PLANS
COUNTY OF EL PASO, STATE OF COLORADO



Know what's below.
Call before you dig.

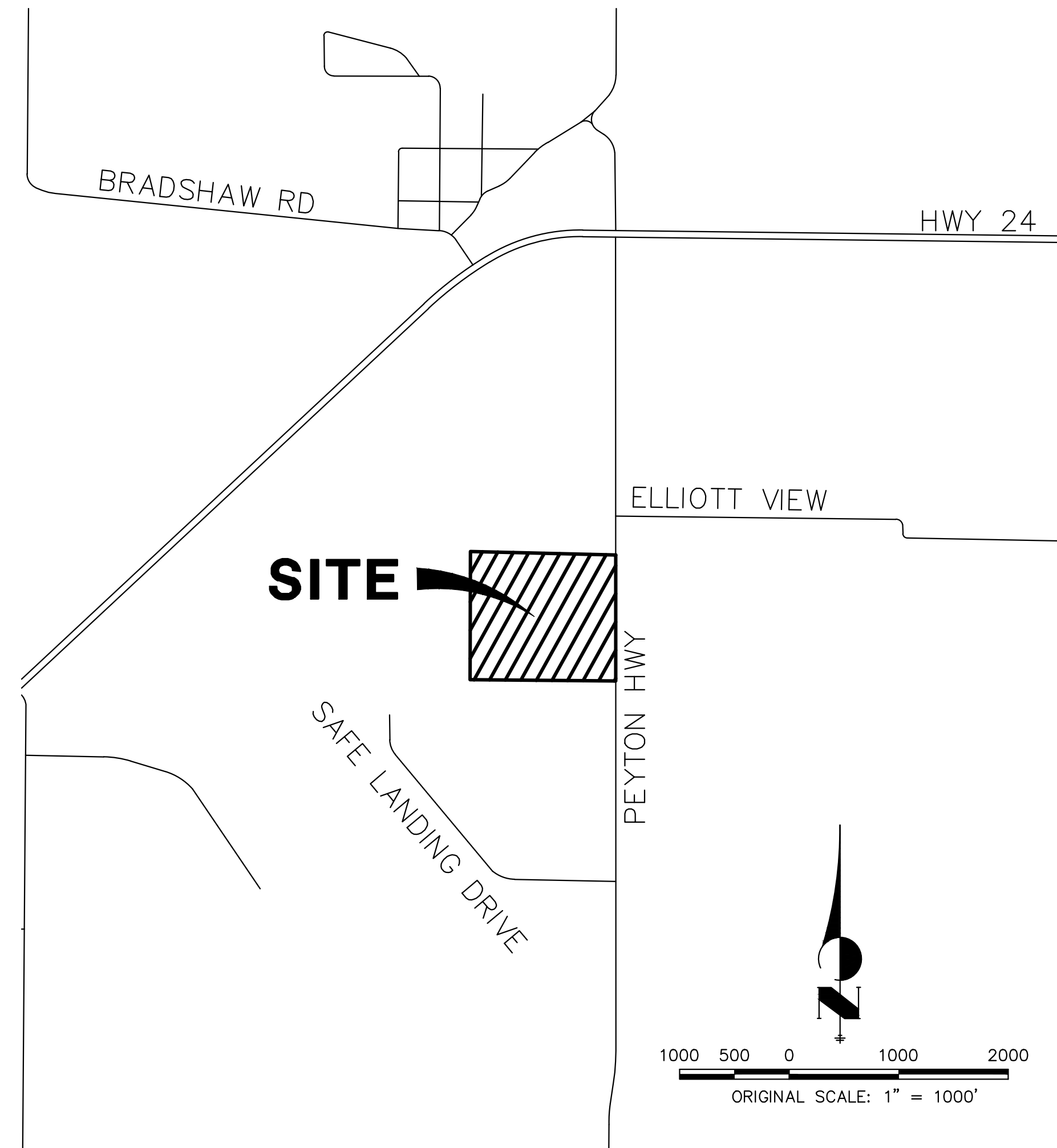
UNTIL SUCH TIME AS THESE DRAWINGS ARE APPROVED BY THE APPROPRIATE REVIEWING AGENCIES, JR ENGINEERING APPROVES THEIR USE. THESE DRAWINGS ARE DESIGNATED BY WRITTEN AUTHORIZATION.

PREPARED FOR
LYRJ
1172 GREENLAND
FOREST DRIVE
MONUMENT, CO 80106
SCOTT SMITH
(719) 499-7764

J.R. ENGINEERING
A Westman Company
Central 303-740-9888 • Colorado Springs 719-588-2583
Fort Collins 970-491-9888 • www.jrengineering.com

BASIS OF BEARING:

BASIS OF BEARINGS: THE EAST LINE OF SECTION 7, TOWNSHIP 12 SOUTH, RANGE 63 WEST OF THE 6TH PRINCIPAL MERIDIAN, BEING MONUMENTED AT THE SOUTH END BY A 3.25" ALUMINUM CAP STAMPED "LS 17496 1995" IN A RANGE BOX AND AT THE NORTH END BY A 3.25" ALUMINUM CAP STAMPED "CDOT LS 25381 2007" IN A RANGE BOX, BEARING S01°04'47"E AS REFERENCED TO COLORADO STATE PLANE CENTRAL ZONE.

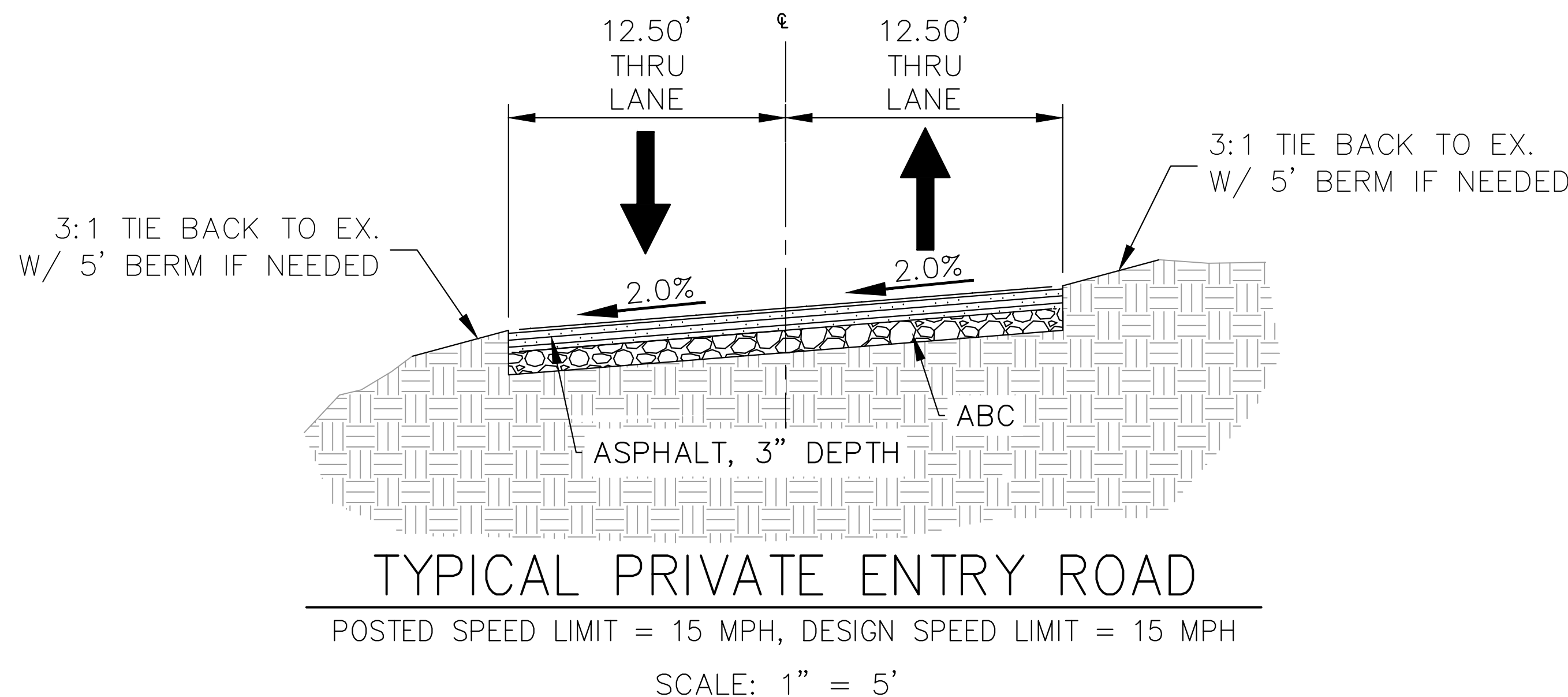
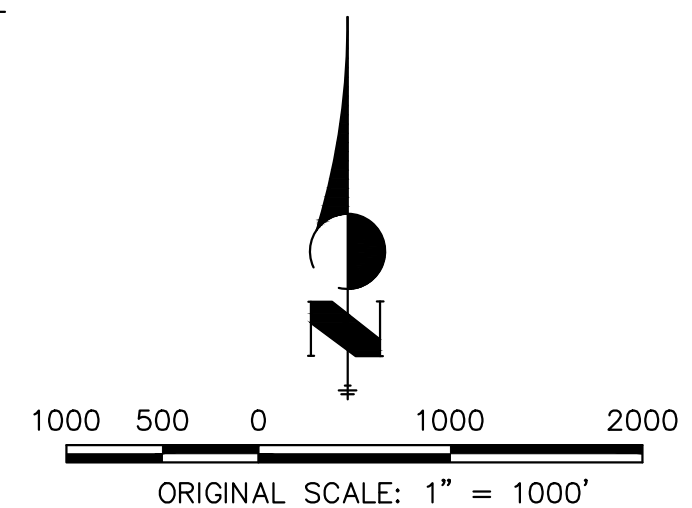


AGENCIES

OWNER/DEVELOPER: LONGHORN ACRES & CATTLE, LLC P.O. BOX 516 PEYTON, CO 80831 SCOTT SMITH (719) 499-7764	FIRE DISTRICT: BLACK FOREST FIRE PROTECTION DISTRICT 11445 TEACHOUT ROAD COLORADO SPRINGS, CO 80908 CHIEF BRYAN JACK (719) 495-4300
CIVIL ENGINEER: JR ENGINEERING, LLC 5475 TECH CENTER DRIVE COLORADO SPRINGS, CO 80919 BRYAN LAW P.E. (303) 267-6254	GAS DEPARTMENT: BLACK HILLS ENERGY 7080 ALEGRE STREET FOUNTAIN, CO 80817 (719) 393-6625
COUNTY ENGINEERING: EL PASO COUNTY PLANNING AND COMMUNITY DEVELOPMENT 2880 INTERNATIONAL CIRCLE, SUITE 110 COLORADO SPRINGS, CO 80910 CHARLENE DURHAM, P.E. (719) 520-7951	ELECTRIC DEPARTMENT: MOUNTAIN VIEW ELECTRIC 11140 E. WOODMEN ROAD FALCON, CO 80531 (719) 495-2283
TRAFFIC ENGINEERING: EL PASO COUNTY DEPARTMENT OF PUBLIC WORKS 3275 AKERS DRIVE COLORADO SPRINGS, CO 80922 JOSHUA PALMER, P.E. (719) 520-6460	COMMUNICATIONS: U.S. WEST COMMUNICATIONS (LOCATORS) (800) 922-1987

SHEET INDEX:

1	-	COVER SHEET
2	-	LEGEND AND GENERAL NOTES
3	-	STREET IMPROVEMENT PLAN
4	-	SIGNAGE AND STRIPING PLAN
4	-	TOTAL SHEETS



THE LOCATIONS OF EXISTING ABOVE GROUND AND UNDERGROUND UTILITIES ARE SHOWN IN AN APPROXIMATE WAY ONLY. THE CONTRACTOR SHALL DETERMINE THE EXACT LOCATION OF ALL EXISTING UTILITIES BEFORE COMMENCING WORK. THE CONTRACTOR SHALL BE FULLY RESPONSIBLE FOR ANY AND ALL DAMAGES WHICH MIGHT BE CAUSED BY HIS FAILURE TO EXACTLY LOCATE AND PRESERVE ANY AND ALL ABOVE GROUND AND UNDERGROUND UTILITIES.

OWNER/DEVELOPER STATEMENT

I, THE OWNER/DEVELOPER HAVE READ AND WILL COMPLY WITH ALL OF THE REQUIREMENTS SPECIFIED IN THESE DETAILED PLANS AND SPECIFICATIONS.

Scott Smith
SCOTT SMITH

June 15, 2026
DATE

LONGHORN ACRES & CATTLE, LLC.
P.O. BOX 516
PEYTON, CO 80831

EL PASO COUNTY STATEMENT

COUNTY PLAN REVIEW IS PROVIDED ONLY FOR GENERAL CONFORMANCE WITH COUNTY DESIGN CRITERIA. THE COUNTY IS NOT RESPONSIBLE FOR THE ACCURACY AND ADEQUACY OF THE DESIGN, DIMENSIONS, AND/OR ELEVATIONS WHICH SHALL BE CONFIRMED AT THE JOB SITE. THE COUNTY THROUGH THE APPROVAL OF THIS DOCUMENT ASSUMES NO RESPONSIBILITY FOR COMPLETENESS AND/OR ACCURACY OF THIS DOCUMENT.

FILED IN ACCORDANCE WITH THE REQUIREMENTS OF THE EL PASO COUNTY LAND DEVELOPMENT CODE, DRAINAGE CRITERIA MANUAL, VOLUMES 1 AND 2, AND ENGINEERING CRITERIA MANUAL AS AMENDED.

IN ACCORDANCE WITH EOM SECTION 1.12, THESE CONSTRUCTION DOCUMENTS WILL BE VALID FOR CONSTRUCTION FOR A PERIOD OF 2 YEARS FROM THE DATE SIGNED BY THE EL PASO COUNTY ENGINEER. IF CONSTRUCTION HAS NOT STARTED WITHIN THOSE 2 YEARS, THE PLANS WILL NEED TO BE RESUBMITTED FOR APPROVAL, INCLUDING PAYMENT OF REVIEW FEES AT THE PLANNING AND COMMUNITY DEVELOPMENT DIRECTORS DISCRETION.

JOSHUA PALMER, P.E. DATE

COUNTY ENGINEER/ECM ADMINISTRATOR

ENGINEER'S STATEMENT

THESE DETAILED PLANS AND SPECIFICATIONS WERE PREPARED UNDER MY DIRECT SUPERVISION. SAID PLANS AND SPECIFICATIONS HAVE BEEN PREPARED ACCORDING TO THE CRITERIA ESTABLISHED BY THE COUNTY FOR DETAILED ROADWAY, DRAINAGE, GRADING AND EROSION CONTROL PLANS AND SPECIFICATIONS, AND SAID PLANS AND SPECIFICATIONS ARE IN CONFORMITY WITH APPLICABLE MASTER DRAINAGE PLANS AND MASTER TRANSPORTATION PLANS. SAID PLAN AND SPECIFICATIONS MEET THE PURPOSES FOR WHICH THE PARTICULAR ROADWAY AND DRAINAGE FACILITIES ARE DESIGNED AND ARE CORRECT TO THE BEST OF MY KNOWLEDGE AND BELIEF. I ACCEPT RESPONSIBILITY FOR ANY LIABILITY CAUSED BY ANY NEGLIGENT ACTS, ERRORS OR OMISSIONS ON MY PART IN PREPARATION OF THESE DETAILED PLANS AND SPECIFICATIONS.

Bryan T. Law
BRYAN T. LAW
25043
PROFESSIONAL ENGINEER
DATE 6/11/26

BRYAN T. LAW, P.E.
COLORADO P.E. 25043
FOR AND ON BEHALF OF JR ENGINEERING, LLC

BY	DATE								
No.	REVISION								
H-SCALE	1"=1000'	N/A							
V-SCALE			01/29/26	PAL	PAL				
DESIGNED BY									
DRAWN BY									
CHECKED BY									
LAZY Y AND ROCKIN J SUBDIVISION COVER SHEET									
SHEET 1 OF 4									
JOB NO. 25228.00									

LAZY Y AND ROCKING J SUBDIVISION

LOCATED IN THE SOUTH HALF OF SECTION 7
TOWNSHIP 12 SOUTH, RANGE 63 WEST OF THE 6TH P.M.
STORM SEWER AND POND PLANS
COUNTY OF EL PASO, STATE OF COLORADO



Know what's below.
Call before you dig.

UNTIL SUCH TIME AS THESE DRAWINGS ARE APPROVED BY THE APPROPRIATE REVIEWING AGENCIES, OR ENGINEERING APPROVES THEIR USE, THESE DRAWINGS ARE DESIGNATED BY WRITTEN AUTHORIZATION.

PREPARED FOR
LYRJ GREENLAND
1172 FOREST DRIVE
MONUMENT, CO 80106
SCOTT SMITH

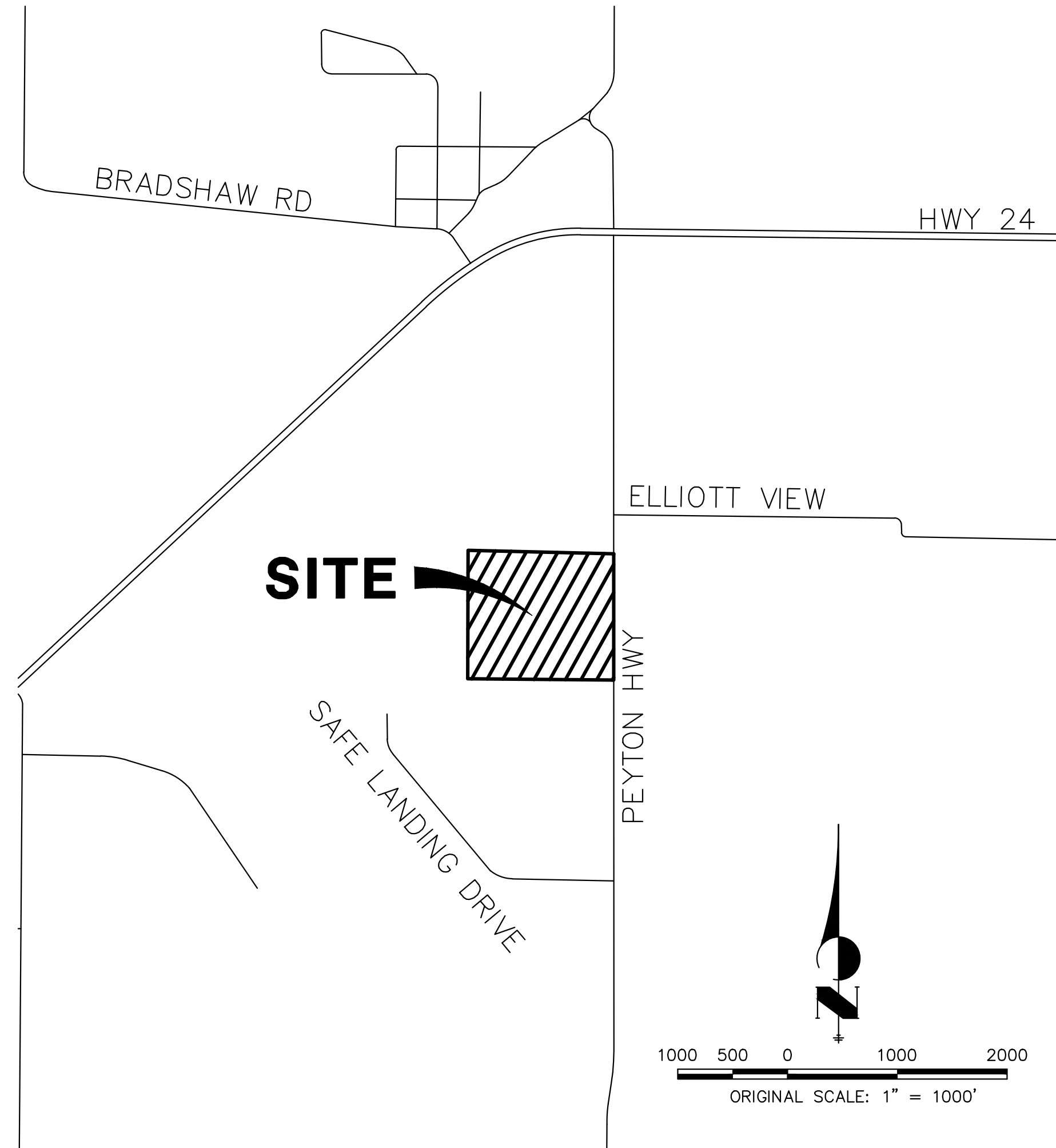
J.R. ENGINEERING
A Westman Company
Central 303-740-9888 • Colorado Springs 719-588-2583
Fort Collins 970-481-9888 • www.jrengineering.com

STANDARD NOTES FOR EL PASO COUNTY CONSTRUCTION PLANS

- ALL DRAINAGE AND ROADWAY CONSTRUCTION SHALL MEET THE STANDARDS AND SPECIFICATIONS OF THE CITY OF COLORADO SPRINGS/EL PASO COUNTY DRAINAGE CRITERIA MANUAL, VOLUMES 1 AND 2, AND THE EL PASO COUNTY ENGINEERING CRITERIA MANUAL.
- CONTRACTOR SHALL BE RESPONSIBLE FOR THE NOTIFICATION AND FIELD NOTIFICATION OF ALL EXISTING UTILITIES, WHETHER SHOWN ON THE PLANS OR NOT, BEFORE BEGINNING CONSTRUCTION. LOCATION OF EXISTING UTILITIES SHALL BE VERIFIED BY THE CONTRACTOR PRIOR TO CONSTRUCTION. CALL 811 TO CONTACT THE UTILITY NOTIFICATION CENTER OF COLORADO (UNCC).
- CONTRACTOR SHALL KEEP A COPY OF THESE APPROVED PLANS, THE GRADING AND EROSION CONTROL PLAN, THE STORMWATER MANAGEMENT PLAN (SWMP), THE SOIL AND GEOTECHNICAL REPORT, AND THE APPROPRIATE DESIGN AND CONSTRUCTION STANDARDS AND SPECIFICATIONS AT THE JOB SITE AT ALL TIMES, INCLUDING THE FOLLOWING:
 - EL PASO COUNTY ENGINEERING CRITERIA MANUAL (ECM)
 - CITY OF COLORADO SPRINGS/ EL PASO COUNTY DRAINAGE CRITERIA MANUAL, VOLUMES 1 AND 2
 - COLORADO DEPARTMENT OF TRANSPORTATION (CDOT) STANDARD SPECIFICATIONS AND BRIDGE CONSTRUCTION
 - CDOT M&S STANDARDS
- NOTWITHSTANDING ANYTHING DEPICTED IN THESE PLANS IN WORDS OR GRAPHIC REPRESENTATION, ALL DESIGN AND CONSTRUCTION RELATED TO ROADS, STORM DRAINAGE AND EROSION CONTROL SHALL CONFORM TO THE STANDARDS AND REQUIREMENTS OF THE MOST RECENT VERSIONS OF THE RELEVANT ADOPTED EL PASO COUNTY STANDARDS, INCLUDING THE LAND DEVELOPMENT CODE, THE ENGINEERING CRITERIA MANUAL, THE DRAINAGE CRITERIA MANUAL, AND THE DRAINAGE CRITERIA MANUAL VOLUME 2. ANY DEVIATIONS FROM REGULATIONS AND STANDARDS MUST BE REQUESTED, AND APPROVED, IN WRITING. ANY MODIFICATIONS NECESSARY TO MEET CRITERIA AFTER-THE-FACT WILL BE ENTIRELY THE DEVELOPER'S RESPONSIBILITY TO RECTIFY.
- IT IS THE DESIGN ENGINEER'S RESPONSIBILITY TO ACCURATELY SHOW EXISTING CONDITIONS, BOTH ONSITE AND OFFSITE, ON THE CONSTRUCTION PLANS. ANY MODIFICATIONS NECESSARY DUE TO CONFLICTS, OMISSIONS, OR CHANGED CONDITIONS WILL BE ENTIRELY THE DEVELOPER'S RESPONSIBILITY TO RECTIFY.
- CONTRACTOR SHALL SCHEDULE A PRE-CONSTRUCTION MEETING WITH EL PASO COUNTY PLANNING AND COMMUNITY DEVELOPMENT INSPECTIONS, PRIOR TO STARTING CONSTRUCTION.
- IT IS THE CONTRACTOR'S RESPONSIBILITY TO UNDERSTAND THE REQUIREMENTS OF ALL JURISDICTIONAL AGENCIES TO OBTAIN ALL REQUIRED PERMITS, INCLUDING BUT NOT LIMITED TO EL PASO COUNTY EROSION AND STORMWATER QUALITY CONTROL PERMIT (ESQCP), REGIONAL BUILDING FLOODPLAIN DEVELOPMENT PERMIT, U.S. ARMY CORPS OF ENGINEERS-ISSUED 401 AND/OR 404 PERMITS, AND COUNTY AND STATE FUGITIVE DUST PERMITS.
- CONTRACTOR SHALL NOT DEVIATE FROM THE PLANS WITHOUT FIRST OBTAINING WRITTEN APPROVAL FROM THE DESIGN ENGINEER AND PCD. CONTRACTOR SHALL NOTIFY THE DESIGN ENGINEER IMMEDIATELY UPON DISCOVERY OF ANY ERRORS OR INCONSISTENCIES.
- CONTRACTOR SHALL COORDINATE GEOTECHNICAL TESTING PER ECM STANDARDS. PAVEMENT DESIGN SHALL BE APPROVED BY EL PASO COUNTY PCD PRIOR TO PLACEMENT OF CURB AND GUTTER AND PAVEMENT.
- ALL CONSTRUCTION TRAFFIC MUST ENTER/EXIT THE SITE AT APPROVED CONSTRUCTION ACCESS POINTS.
- SIGHT VISIBILITY TRIANGLES ARE IDENTIFIED IN THE PLANS SHALL BE PROVIDED AT ALL INTERSECTIONS. OBSTRUCTIONS GREATER THAN 18 INCHES ABOVE FLOWLINE ARE NOT ALLOWED IN SIGHT TRIANGLES.
- SIGNING AND STRIPING SHALL COMPLY WITH EL PASO COUNTY DEPARTMENT OF PUBLIC WORKS AND MUTCD CRITERIA.
- CONTRACTOR SHALL OBTAIN ANY PERMITS REQUIRED BY EL PASO COUNTY DEPARTMENT OF PUBLIC WORKS, INCLUDING WORK WITHIN THE RIGHT-OF-WAY AND SPECIAL TRANSPORT PERMITS.
- THE LIMITS OF CONSTRUCTION SHALL REMAIN WITHIN THE PROPERTY LINE UNLESS OTHERWISE NOTED. THE OWNER/DEVELOPER SHALL OBTAIN WRITTEN PERMISSION AND EASEMENTS, WHERE REQUIRED, FROM ADJOINING PROPERTY OWNER(S) PRIOR TO ANY OFF-SITE DISTURBANCE, GRADING, OR CONSTRUCTION.

BASIS OF BEARING:

BASIS OF BEARINGS: THE EAST LINE OF SECTION 7, TOWNSHIP 12 SOUTH, RANGE 63 WEST OF THE 6TH PRINCIPAL MERIDIAN, BEING MONUMENTED AT THE SOUTH END BY A 3.25" ALUMINUM CAP STAMPED "LS 17496 1995" IN A RANGE BOX AND AT THE NORTH END BY A 3.25" ALUMINUM CAP STAMPED "CDOT LS 25381 2007" IN A RANGE BOX, BEARING S01°04'47"E AS REFERENCED TO COLORADO STATE PLANE CENTRAL ZONE.



AGENCIES

OWNER/DEVELOPER:	LONGHORN ACRES & CATTLE, LLC P.O. BOX 516 PEYTON, CO 80831 SCOTT SMITH (719) 499-7764	FIRE DISTRICT:	BLACK FOREST FIRE PROTECTION DISTRICT 11445 TEACHOUT ROAD COLORADO SPRINGS, CO 80908 CHIEF BRYAN JACK (719) 495-4300
CIVIL ENGINEER:	JR ENGINEERING, LLC 5475 TECH CENTER DRIVE COLORADO SPRINGS, CO 80919 BRYAN LAW P.E. (303) 267-6254	GAS DEPARTMENT:	BLACK HILLS ENERGY 7080 ALEGRE STREET FOUNTAIN, CO 80817 (719) 393-6625
COUNTY ENGINEERING:	EL PASO COUNTY PLANNING AND COMMUNITY DEVELOPMENT 2880 INTERNATIONAL CIRCLE, SUITE 110 COLORADO SPRINGS, CO 80910 CHARLENE DURHAM, P.E. (719) 520-7951	ELECTRIC DEPARTMENT:	MOUNTAIN VIEW ELECTRIC 11140 E. WOODMEN ROAD FALCON, CO 80631 (719) 495-2283
TRAFFIC ENGINEERING:	EL PASO COUNTY DEPARTMENT OF PUBLIC WORKS 3275 AKERS DRIVE COLORADO SPRINGS, CO 80922 JOSHUA PALMER, P.E. (719) 520-6460	COMMUNICATIONS:	U.S. WEST COMMUNICATIONS (LOCATORS) (800) 922-1987

SHEET INDEX:

1	-	COVER
2	-	LEGEND
3-6	-	STORM SEWER PLAN & PROFILE
7-8	-	POND A PLANS
9	-	POND A FOREBAY
10	-	POND A OUTLET
11-12	-	POND B PLANS
13	-	POND B FOREBAY
14	-	POND B OUTLET
15-16	-	DETAILS
16	-	TOTAL SHEETS

STORM SEWER NOTES

- SEE SHEET 1 FOR BASIS OF BEARING. SEE SHEET 2 FOR LEGEND.
- ALL STORM SEWER PIPES, INLETS, MANHOLES, AND APPURTENANCES WITHIN THE R.O.W. ARE PUBLIC. STORM FACILITIES OUTSIDE OF THE PUBLIC R.O.W. ARE PRIVATE, UNLESS OTHERWISE NOTED.
- ALL STATIONING IS PIPE CENTERLINE UNLESS OTHERWISE NOTED.
- ALL PROPOSED RCP STORM SEWER PIPE SHALL BE CLASS III UNLESS OTHERWISE NOTED.
- PIPE LENGTHS ARE FROM INSIDE INLET WALL TO INSIDE INLET WALL, FROM CENTER OF MANHOLE TO INSIDE INLET WALL, OR FROM CENTER OF MANHOLE TO CENTER OF MANHOLE. PIPE LENGTHS INCLUDE FES OR HEADWALL.
- WHERE PIPES ENTER STRUCTURES, THE CENTERLINE STATION CALLED OUT ON THE PLANS IS TO THE CENTER OF STRUCTURE. WHERE PIPES ENTER STRUCTURES ON A SKEW, CONTRACTOR IS REQUIRED TO EXTEND PIPE TO ENSURE THAT BOTH EDGES OF THE PIPE EXTEND INTO THE STRUCTURE. CONTRACTOR WILL THEN BE REQUIRED TO CUT PIPE FLUSH WITH THE INSIDE FACE OF THE STRUCTURE AND GROUT IN PLACE.
- PIPES SHALL HAVE JOINT RESTRAINTS ON LAST 3 JOINTS AT PIPE OUTFALL.
- PIPES WITH PRESSURE HEAD SHALL USE WATER TIGHT JOINTS WITH A 100-YEAR SERVICE LIFE.
- PIPE BEDDING SHALL CONFORM TO EL PASO COUNTY CONSTRUCTION STANDARDS AND SPECIFICATIONS. BEDDING FOR RCP SHALL BE AG7122 NO. 57/67 CRUSHED ROCK, SQUEEGEE OR MIXTURES CONTAINING SQUEEGEE SHALL NOT BE USED. BEDDING SHALL BE 6 TO 8 INCHES DEEP UNDER THE PIPE AND BACKFILLED TO THE SPRING LINE.
- ALL MATERIALS AND INSTALLATION PROCEDURES SHALL BE IN COMPLIANCE WITH MANUFACTURERS SPECIFICATIONS AND EL PASO COUNTY STANDARDS AND SPECIFICATION.
- SEE DETAIL SHEET 15 - 16 FOR APPLICABLE DETAILS.

POND NOTES

- ALL PROPOSED POND IMPROVEMENTS ARE PRIVATE UNLESS OTHERWISE NOTED.
- SEE SHEETS 3-6 FOR PROPOSED STORM SEWER DESIGN.
- SEE PRIVATE STREET IMPROVEMENT PLANS BY JR ENGINEERING FOR PROPOSED PRIVATE STREET DESIGN.
- SEE GRADING AND EROSION CONTROL PLAN BY JR ENGINEERING.

THE LOCATIONS OF EXISTING ABOVE GROUND AND UNDERGROUND UTILITIES ARE SHOWN IN AN APPROXIMATE WAY ONLY. THE CONTRACTOR SHALL DETERMINE THE EXACT LOCATION OF ALL EXISTING UTILITIES BEFORE COMMENCING WORK. THE CONTRACTOR SHALL BE FULLY RESPONSIBLE FOR ANY AND ALL DAMAGES WHICH MIGHT BE CAUSED BY HIS FAILURE TO EXACTLY LOCATE AND PRESERVE ANY AND ALL ABOVE GROUND AND UNDERGROUND UTILITIES.

OWNER/DEVELOPER STATEMENT

I, THE OWNER/DEVELOPER HAVE READ AND WILL COMPLY WITH ALL OF THE REQUIREMENTS SPECIFIED IN THESE DETAILED PLANS AND SPECIFICATIONS.

Scott Smith
SCOTT SMITH

June 15, 2026
DATE

LONGHORN ACRES & CATTLE, LLC.
P.O. BOX 516
PEYTON, CO 80831

EL PASO COUNTY STATEMENT

COUNTY PLAN REVIEW IS PROVIDED ONLY FOR GENERAL CONFORMANCE WITH COUNTY DESIGN CRITERIA. THE COUNTY IS NOT RESPONSIBLE FOR THE ACCURACY AND ADEQUACY OF THE DESIGN, DIMENSIONS, AND/OR ELEVATIONS WHICH SHALL BE CONFIRMED AT THE JOB SITE. THE COUNTY THROUGH THE APPROVAL OF THIS DOCUMENT ASSUMES NO RESPONSIBILITY FOR COMPLETENESS AND/OR ACCURACY OF THIS DOCUMENT.

FILED IN ACCORDANCE WITH THE REQUIREMENTS OF THE EL PASO COUNTY LAND DEVELOPMENT CODE, DRAINAGE CRITERIA MANUAL, VOLUMES 1 AND 2, AND ENGINEERING CRITERIA MANUAL AS AMENDED.

IN ACCORDANCE WITH EOM SECTION 1.12, THESE CONSTRUCTION DOCUMENTS WILL BE VALID FOR CONSTRUCTION FOR A PERIOD OF 2 YEARS FROM THE DATE SIGNED BY THE EL PASO COUNTY ENGINEER. IF CONSTRUCTION HAS NOT STARTED WITHIN THOSE 2 YEARS, THE PLANS WILL NEED TO BE RESUBMITTED FOR APPROVAL, INCLUDING PAYMENT OF REVIEW FEES AT THE PLANNING AND COMMUNITY DEVELOPMENT DIRECTORS DISCRETION.

JOSHUA PALMER, P.E. DATE

COUNTY ENGINEER/ECM ADMINISTRATOR

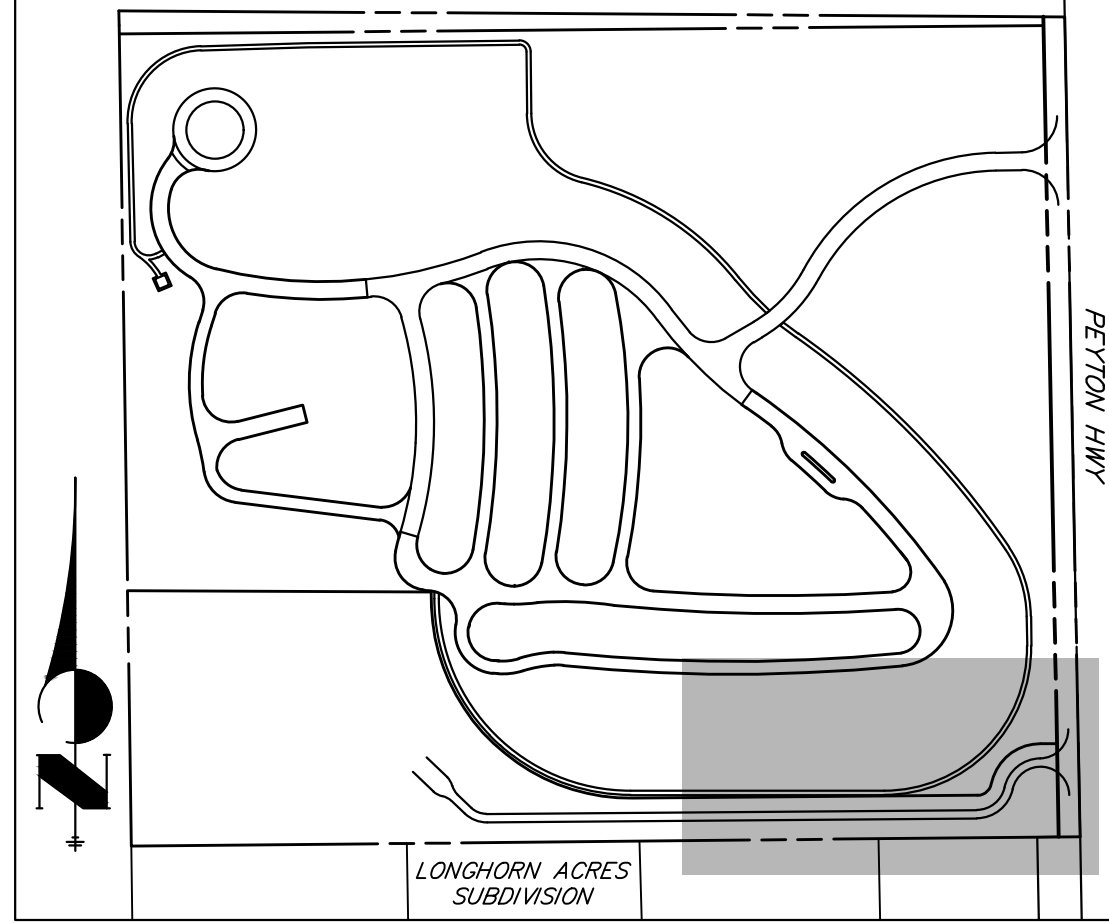
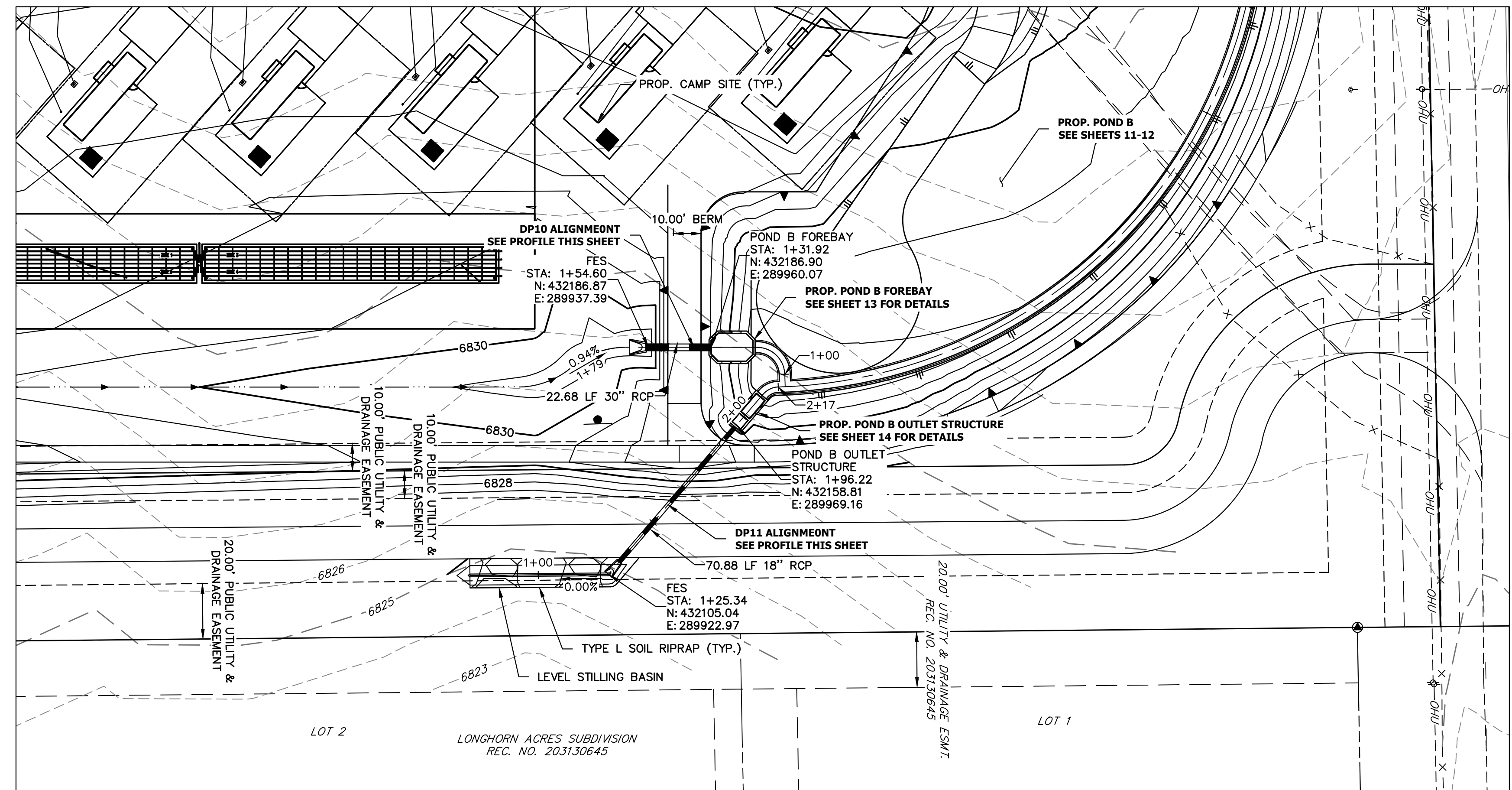
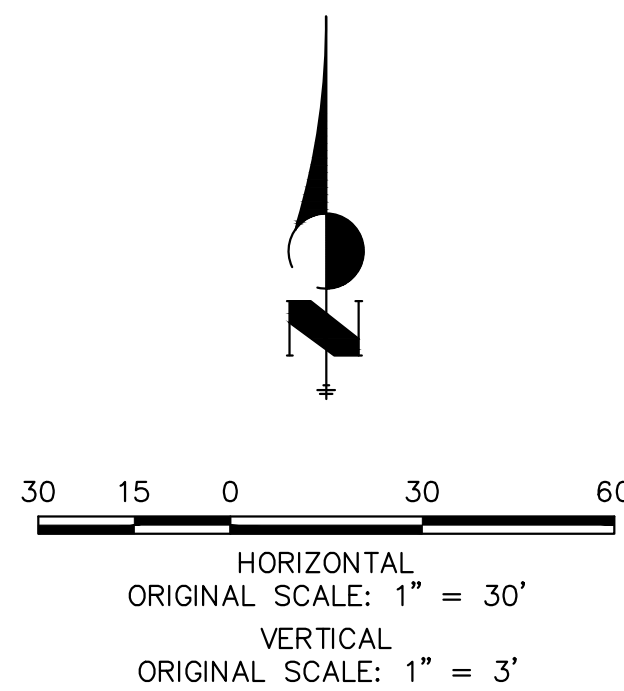
ENGINEER'S STATEMENT

THESE DETAILED PLANS AND SPECIFICATIONS WERE PREPARED UNDER MY DIRECT SUPERVISION. SAID PLANS AND SPECIFICATIONS HAVE BEEN PREPARED ACCORDING TO THE CRITERIA ESTABLISHED BY THE COUNTY FOR DETAILED ROADWAY, DRAINAGE, GRADING AND EROSION CONTROL PLANS AND SPECIFICATIONS, AND SAID PLANS AND SPECIFICATIONS ARE IN CONFORMITY WITH APPLICABLE MASTER DRAINAGE PLANS AND MASTER TRANSPORTATION PLANS. SAID PLAN AND SPECIFICATIONS MEET THE PURPOSES FOR WHICH THE PARTICULAR ROADWAY AND DRAINAGE FACILITIES ARE DESIGNED AND ARE CORRECT TO THE BEST OF MY KNOWLEDGE AND BELIEF. I ACCEPT RESPONSIBILITY FOR ANY LIABILITY CAUSED BY ANY NEGLIGENT ACTS, ERRORS OR OMISSIONS ON MY PART IN PREPARATION OF THESE DETAILED PLANS AND SPECIFICATIONS.

Bryan T. Law
BRYAN T. LAW, P.E.
COLORADO P.E. 25043
FOR AND ON BEHALF OF JR ENGINEERING, LLC
11/1/26
DATE

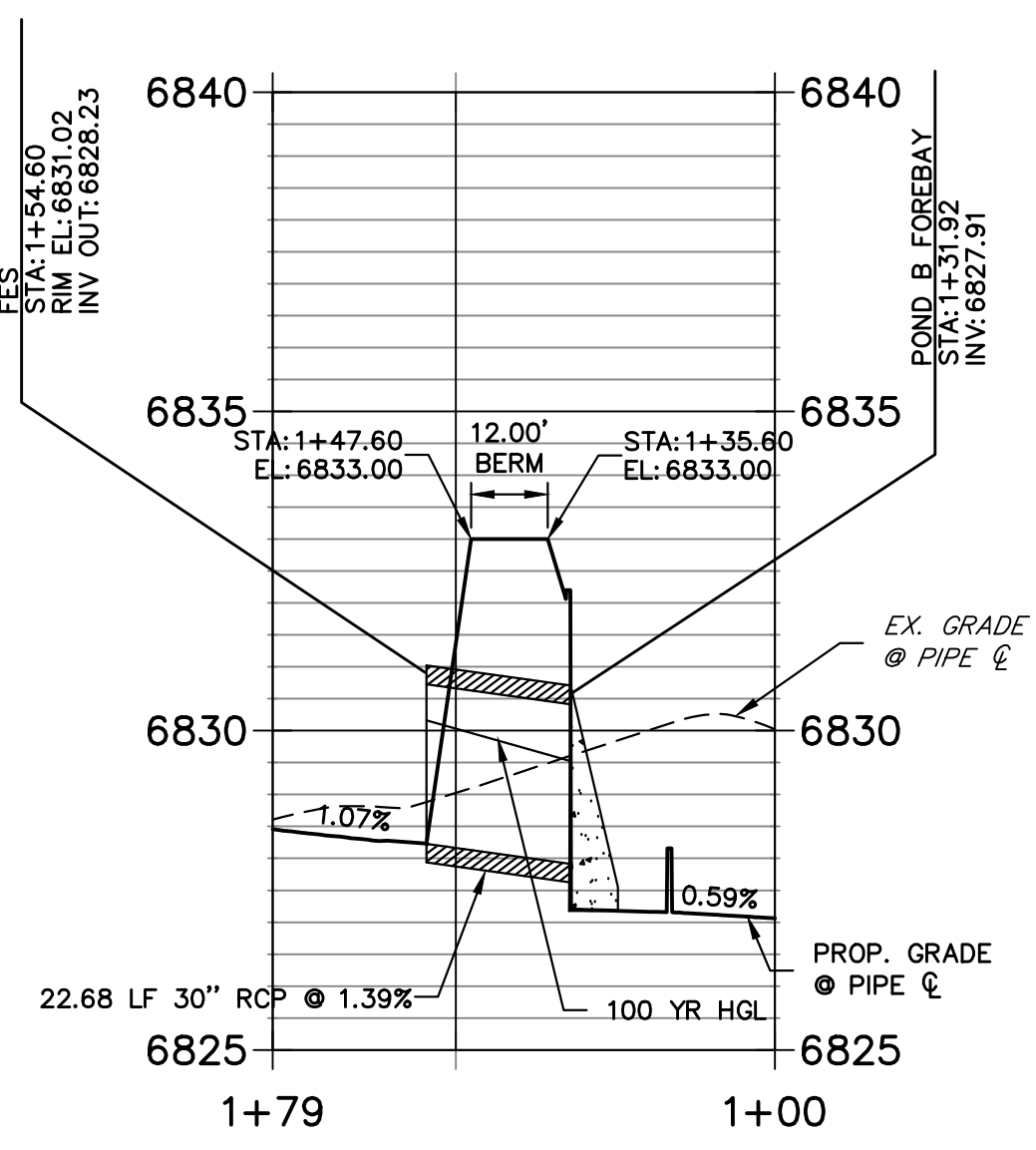
No.	REVISION	DATE	BY	CHECKED BY
1				
2				
3				
4				
5				
6				
7				
8				
9				
10				
11				
12				
13				
14				
15				
16				

LAZY Y AND ROCKING J
SUBDIVISION
COVER
SHEET 1 OF 16
JOB NO. 25228.00

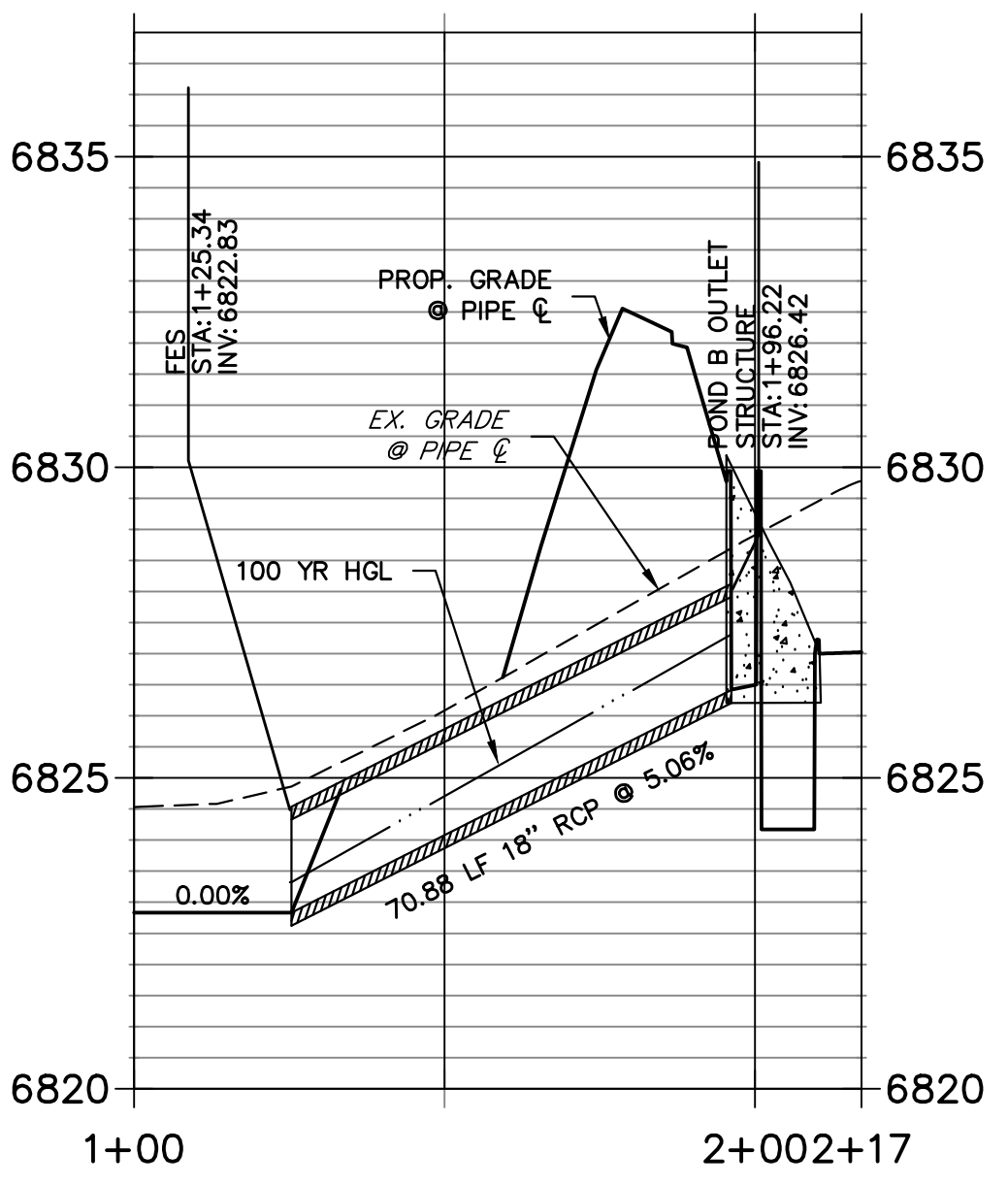


KEYMAP
SCALE: N.T.S.

**DP10 PROFILE
STA 1+00.00 TO 1+78.69**



**DP11 PROFILE
STA 1+00.00 TO 2+17.17**



STORM SEWER NOTES

1. PIPE LENGTHS MEASURED FROM CENTER OF MANHOLES, INSIDE FACE OF INLETS, OUTLET END OF FLARED END SECTIONS AND FACE OF WALLS WHERE APPLICABLE.
2. @ STATIONS & OFFSETS ARE LABELED AT CENTER OF STRUCTURE.
3. CONTRACTOR TO FIELD VERIFY EXISTING UTILITY LOCATIONS, PRIOR TO EXTENSION OF MAINS AND SERVICE CONNECTIONS. CONTRACTOR TO COORDINATE CONNECTIONS WITH UTILITY PROVIDER.

THE LOCATIONS OF EXISTING ABOVE GROUND AND UNDERGROUND UTILITIES ARE SHOWN IN AN APPROXIMATE WAY ONLY. THE CONTRACTOR SHALL DETERMINE THE EXACT LOCATION OF ALL EXISTING UTILITIES BEFORE COMMENCING WORK. THE CONTRACTOR SHALL BE FULLY RESPONSIBLE FOR ANY AND ALL DAMAGES WHICH MIGHT BE CAUSED BY HIS FAILURE TO EXACTLY LOCATE AND PRESERVE ANY AND ALL ABOVE GROUND AND UNDERGROUND UTILITIES.



ENGINEER'S STATEMENT

PREPARED UNDER MY DIRECT SUPERVISION AND ON BEHALF OF JR ENGINEERING

 25043
 6/11/26
 BRYAN T. LAW, P.E.
 COLORADO P.E. 25043
 FOR AND ON BEHALF OF JR ENGINEERING, LLC

UNTIL SUCH TIME AS THESE DRAWINGS ARE APPROVED BY THE AGENCIES, OR ENGINEERING APPROVES THEIR USE, THESE DRAWINGS ARE DESIGNATED BY WRITTEN AUTHORIZATION.

PREPARED FOR
 LVR
 1172 GREENLAND FOREST DRIVE
 MONUMENT, CO 80106
 SCOTT SMITH
 (719) 499-7764

J.R. ENGINEERING
 A Westman Company

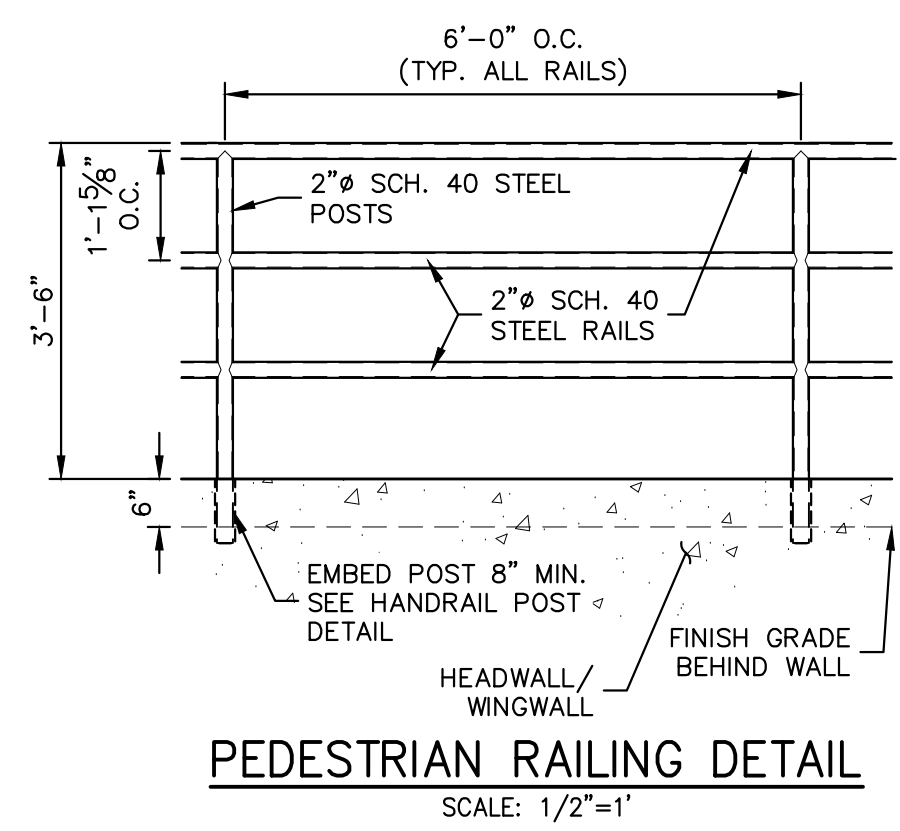
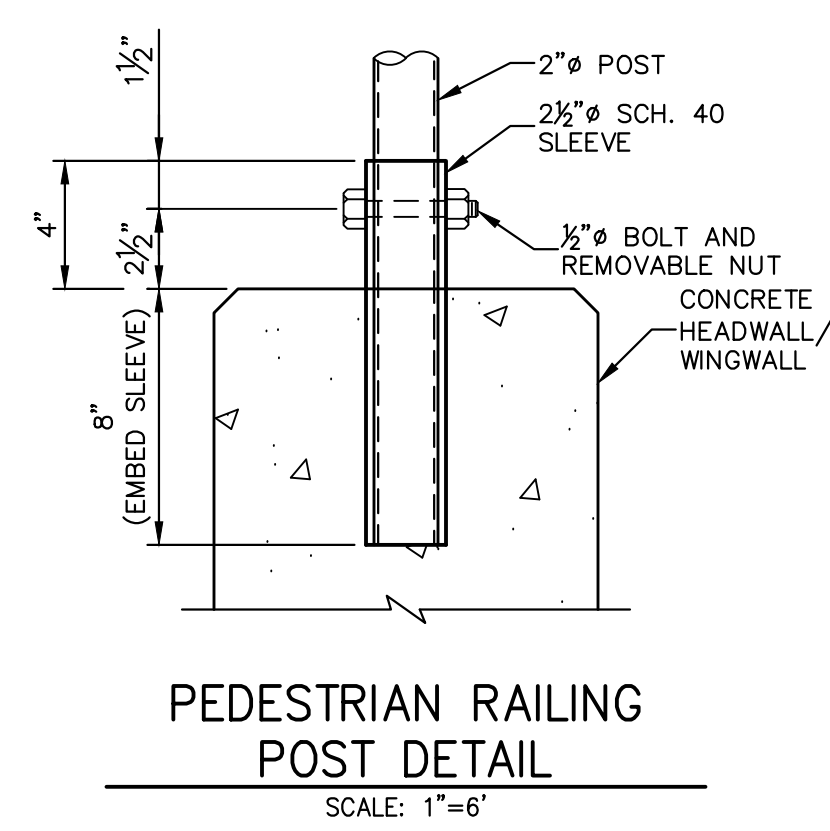
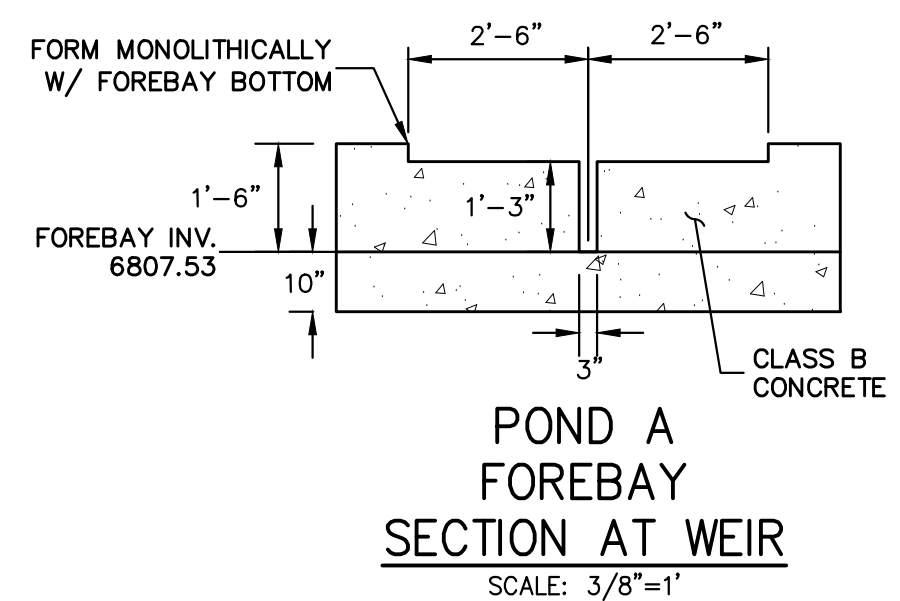
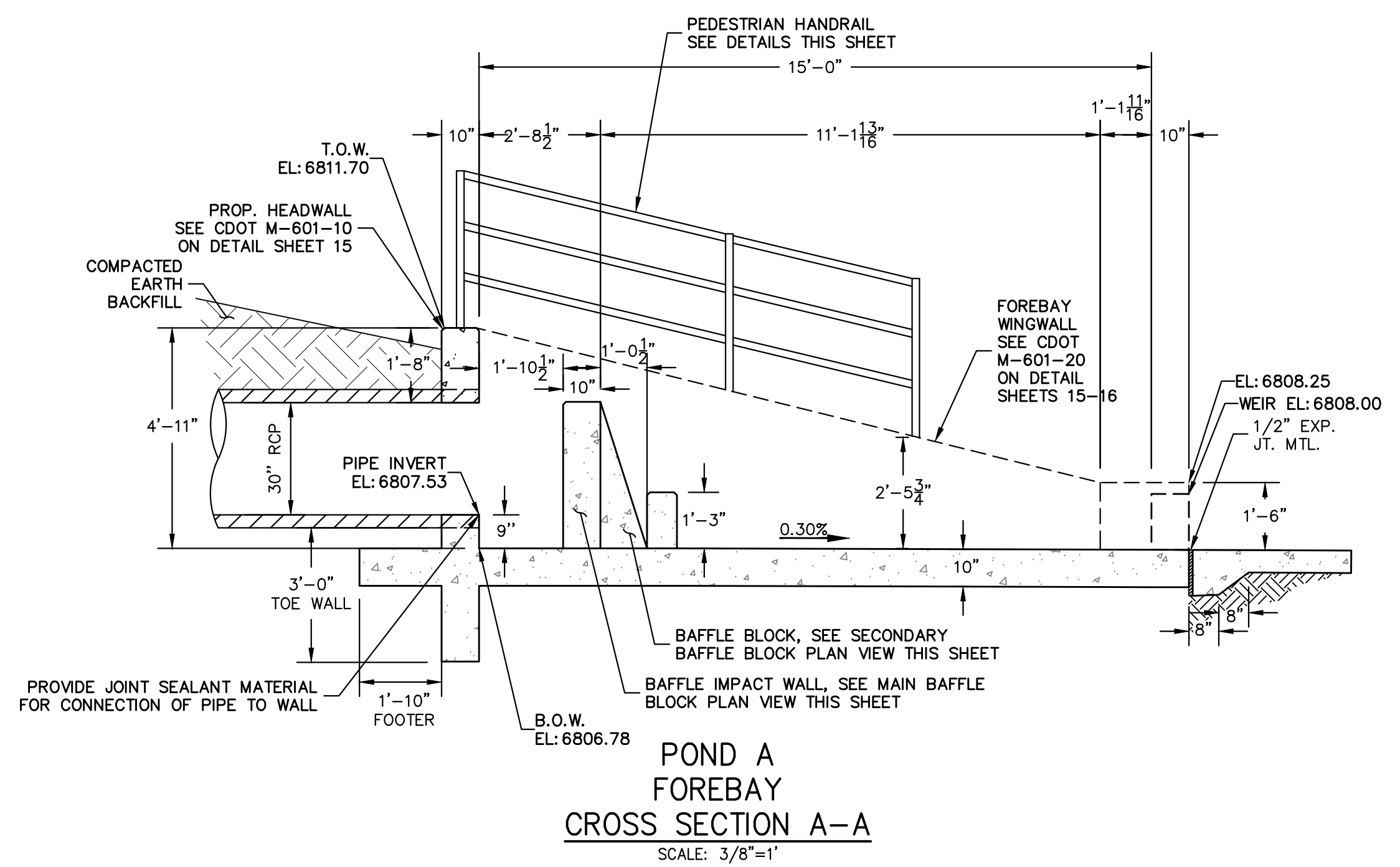
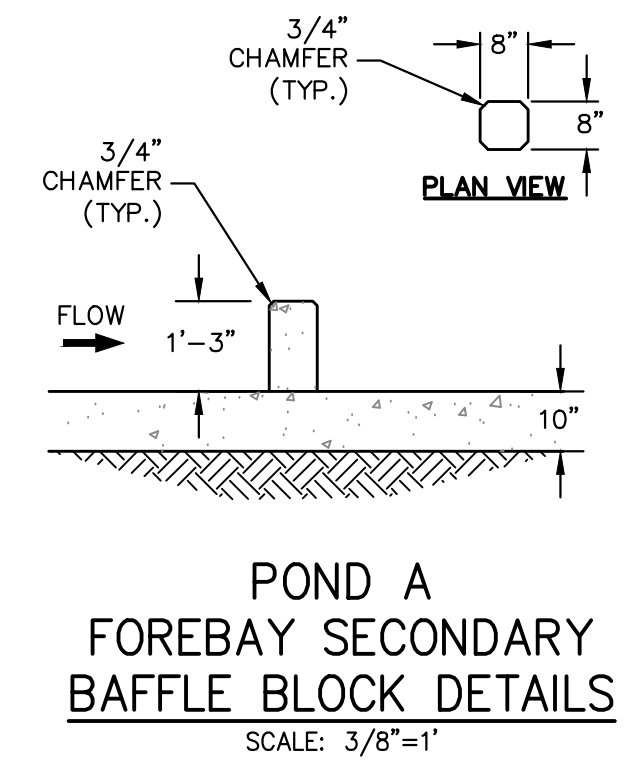
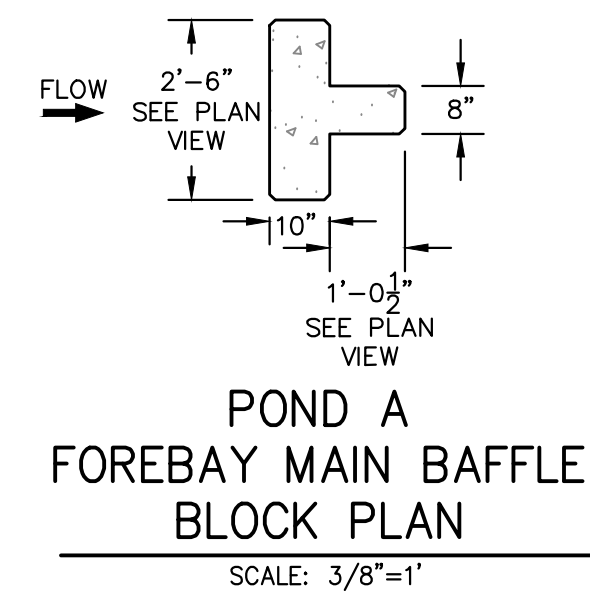
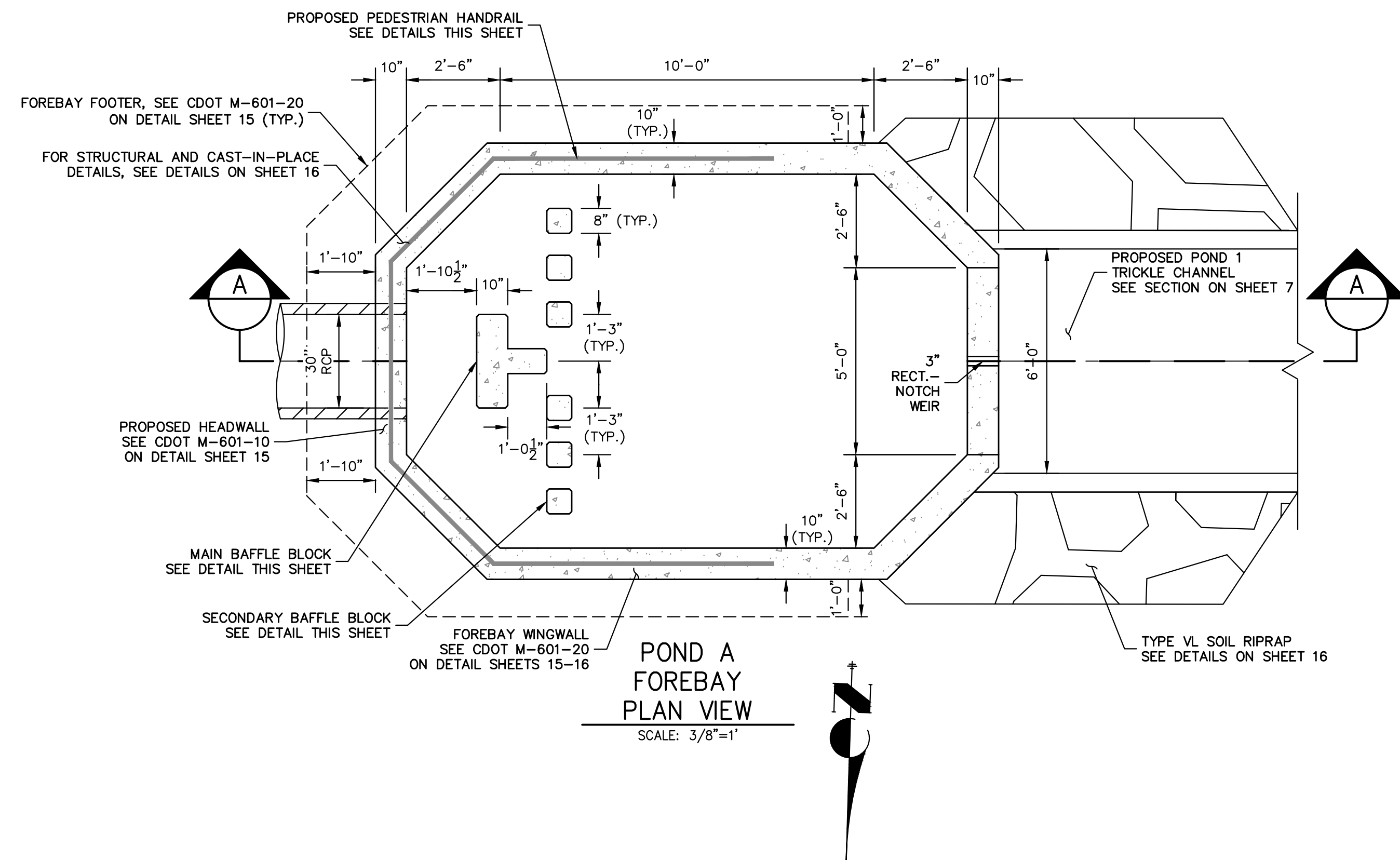
 Centennial 303-740-9888 • Colorado Springs 719-588-2583
 Fort Collins 970-491-9888 • www.jrengineering.com

BY	DATE	No.	REVISION

H-SCALE 1"=30'
 V-SCALE 1"=3'
 DATE 01/29/26
 DESIGNED BY PAL
 DRAWN BY PAL
 CHECKED BY

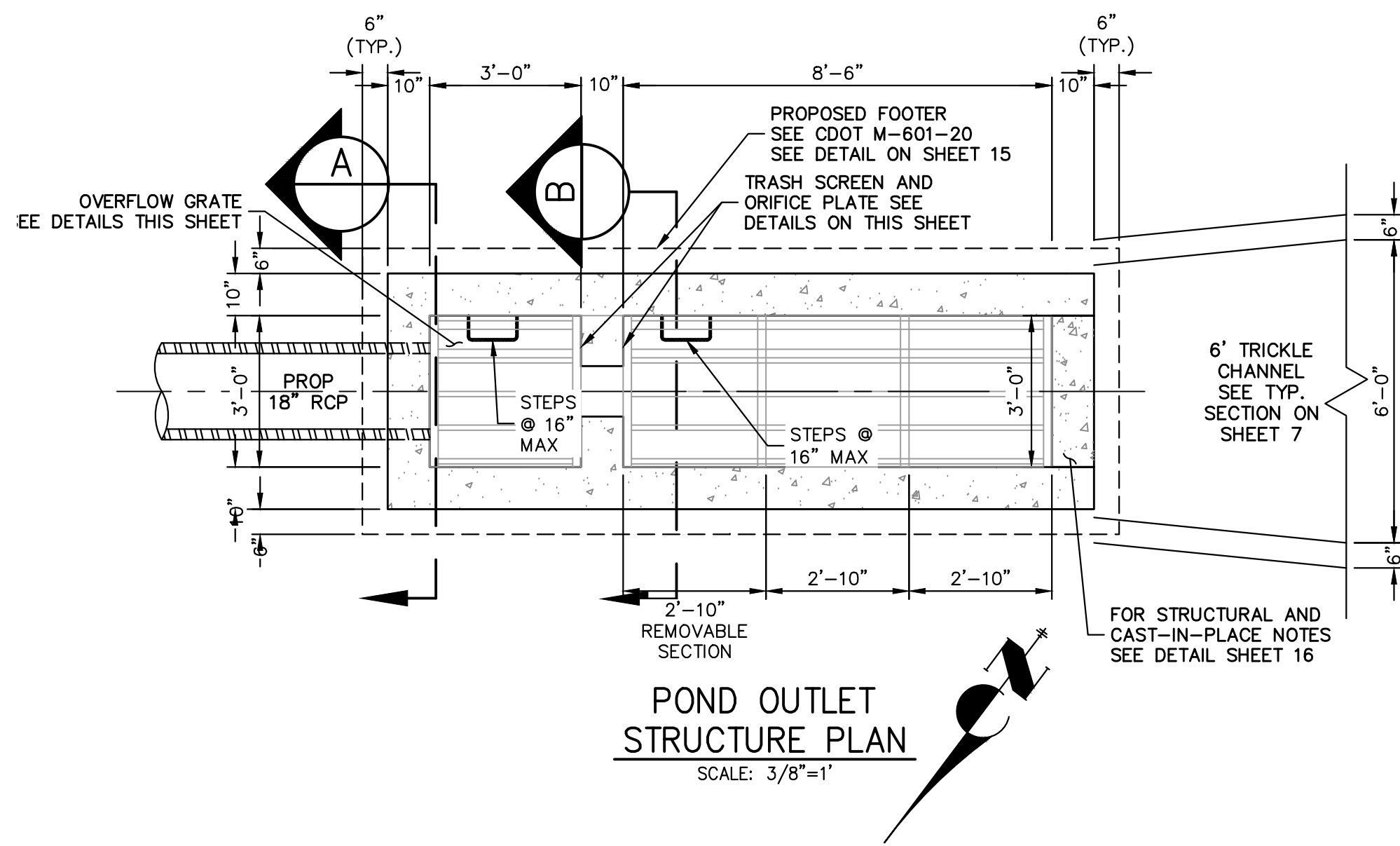
LAZY Y AND ROCKING J SUBDIVISION
STORM SEWER PLAN & PROFILE

SHEET 6 OF 16
 JOB NO. 25228.00

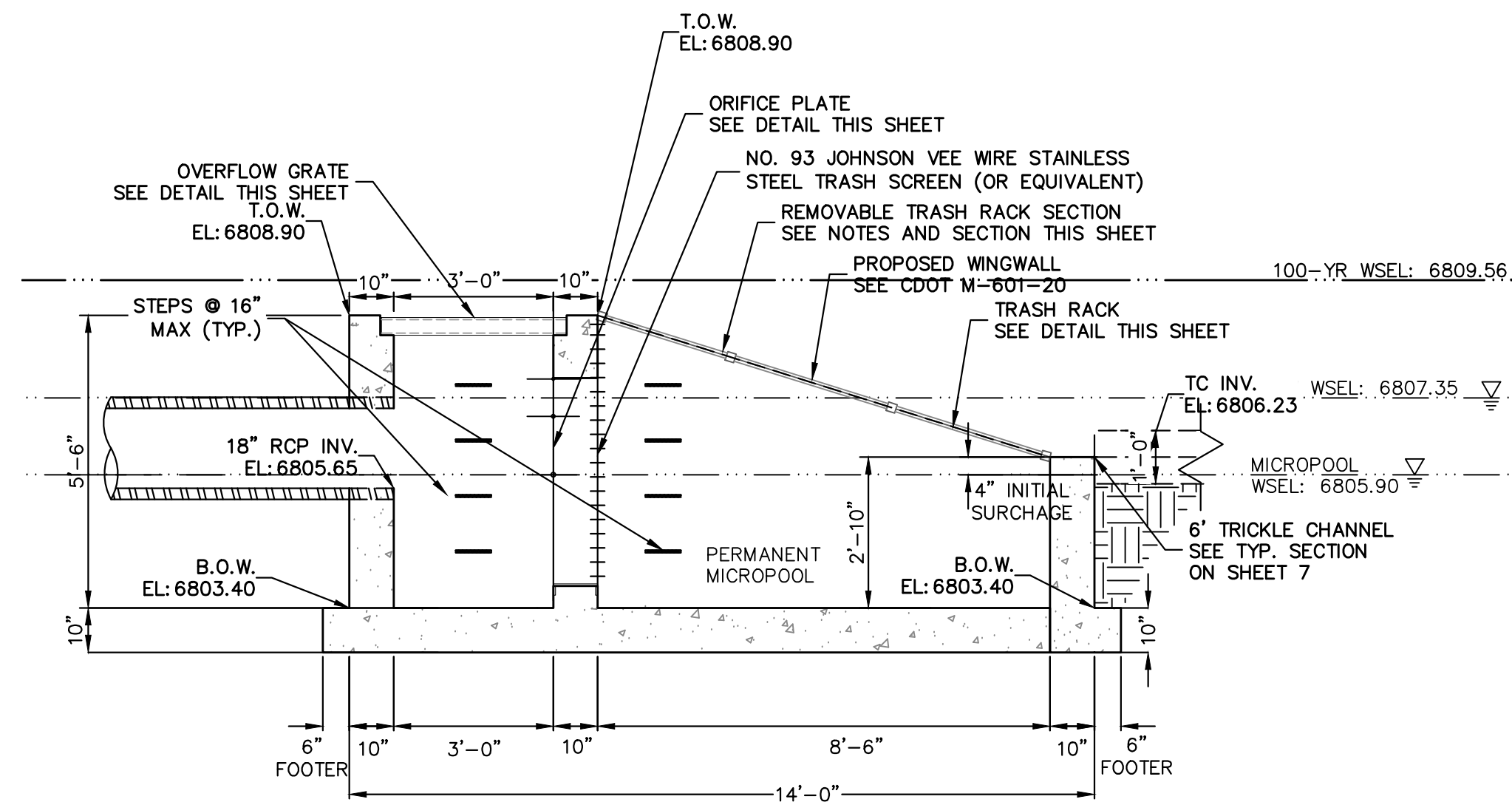


ENGINEER'S STATEMENT
 PREPARED UNDER MY DIRECT SUPERVISION AND ON BEHALF OF JR ENGINEERING
 [Signature]
 BRYAN T. LAW, P.E.
 COLORADO P.E. 25043
 FOR AND ON BEHALF OF JR ENGINEERING, LLC
 DATE: 11/26

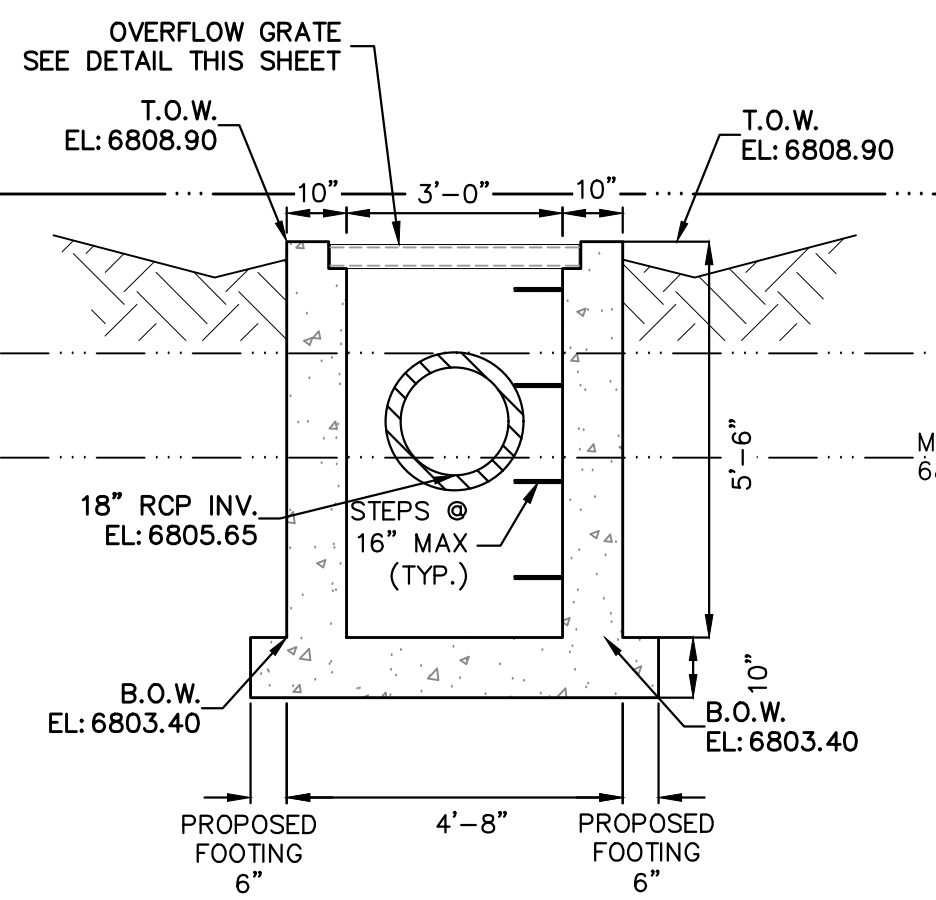
UNTIL SUCH TIME AS THESE DRAWINGS ARE APPROVED BY THE APPROPRIATE REVIEWING AGENCIES, JR ENGINEERING APPROVES THEIR USE. DESIGNATED BY WRITTEN AUTHORIZATION.	
PREPARED FOR	LYRU 1172 GREENLAND FOREST DRIVE MONUMENT, CO 80106 SCOTT SMITH (719) 499-7764
J.R. ENGINEERING A Westman Company	Central 303-740-9383 • Colorado Springs 719-588-2583 Fort Collins 970-491-9888 • www.jrengineering.com
BY	DATE
No.	REVISION
H-SCALE 3/8"=1'	V-SCALE 3/8"=1'
DATE 01/29/26	DESIGNED BY GAG
DRAWN BY TAU	CHECKED BY
LAZY Y AND ROCKING J SUBDIVISION POND A FOREBAY	
SHEET 9	OF 16
JOB NO. 25228.00	



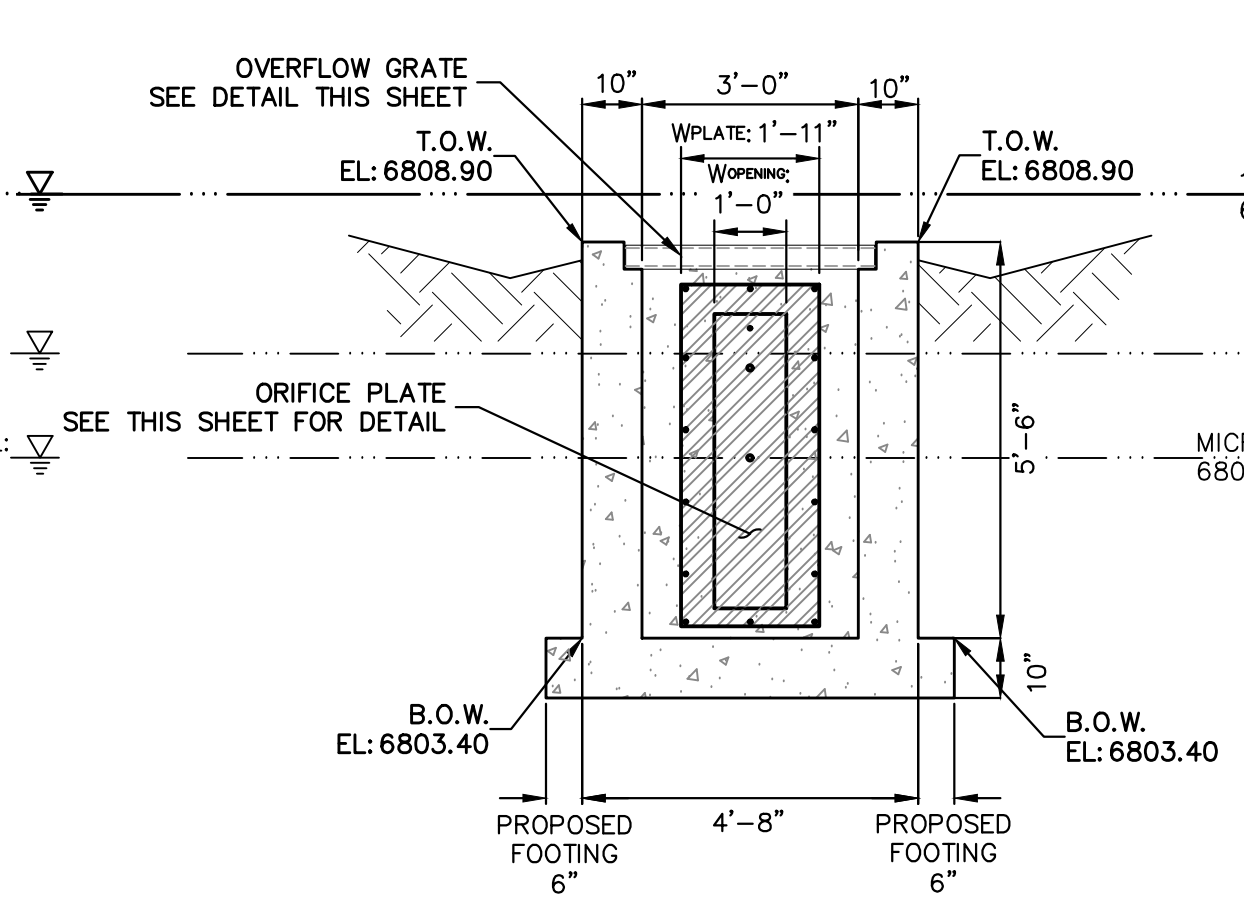
POND OUTLET STRUCTURE PLAN
SCALE: 3/8"=1'



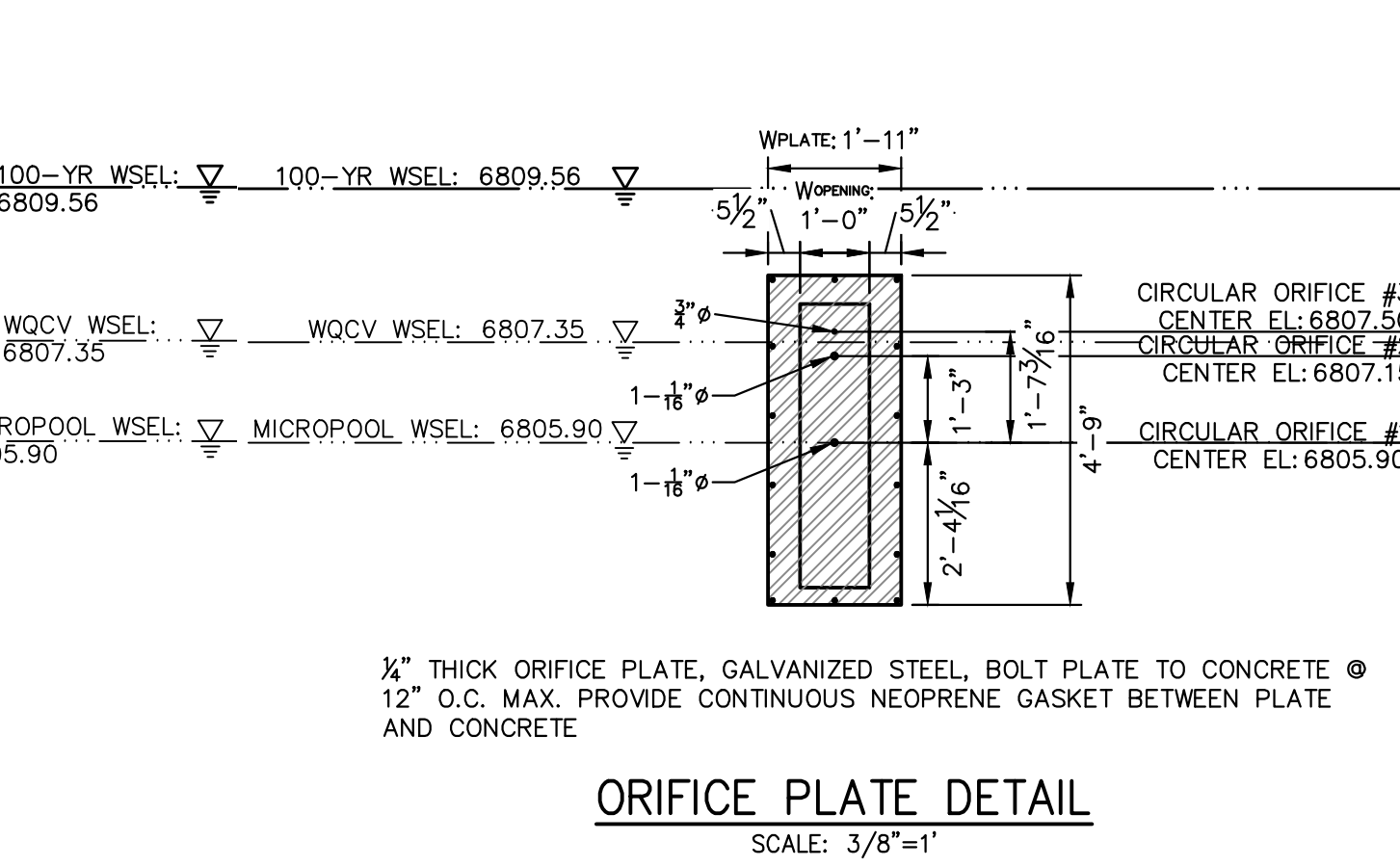
POND OUTLET STRUCTURE PROFILE
SCALE: 3/8"=1'



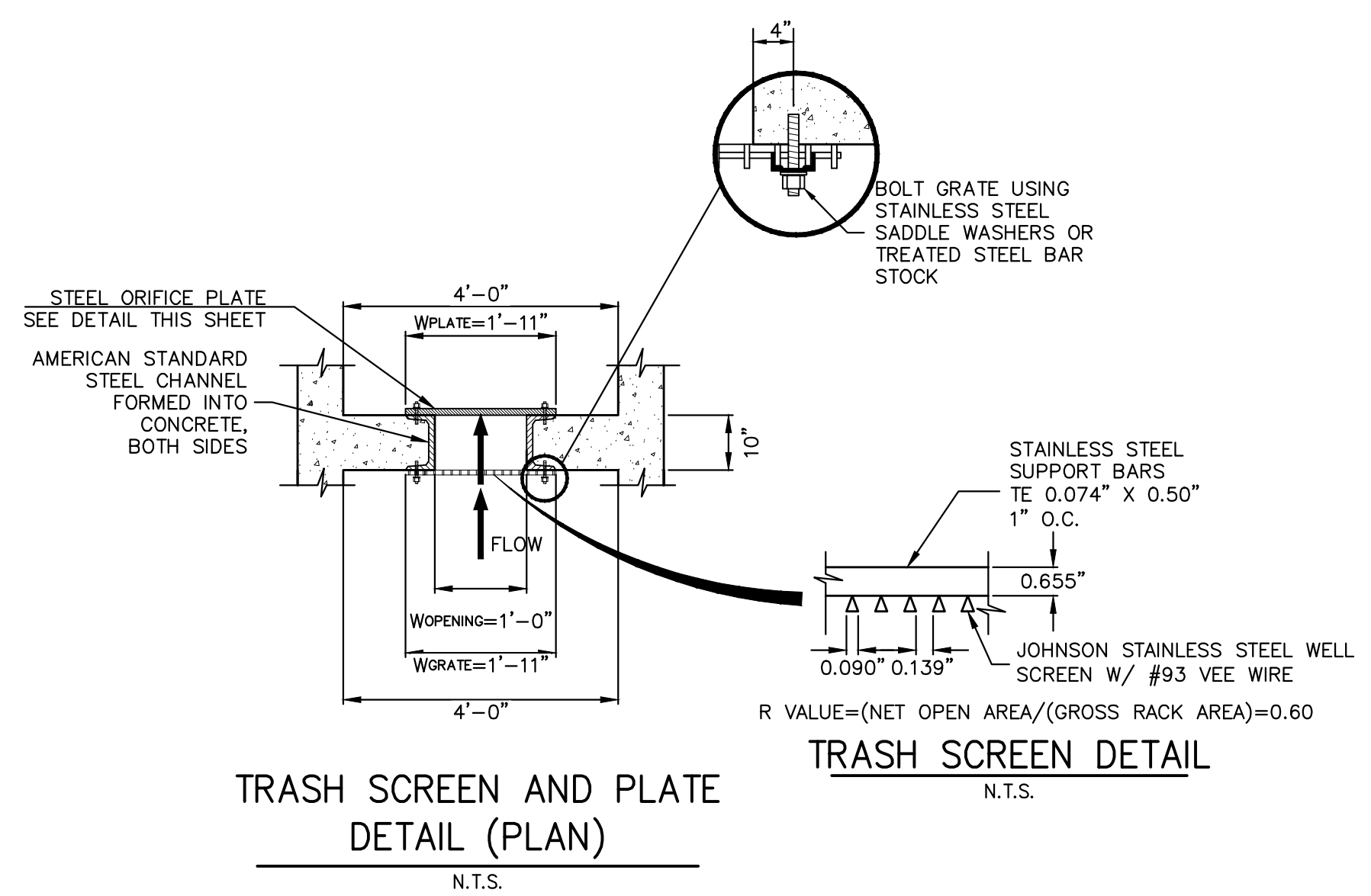
A-A SECTION
SCALE: 3/8"=1'



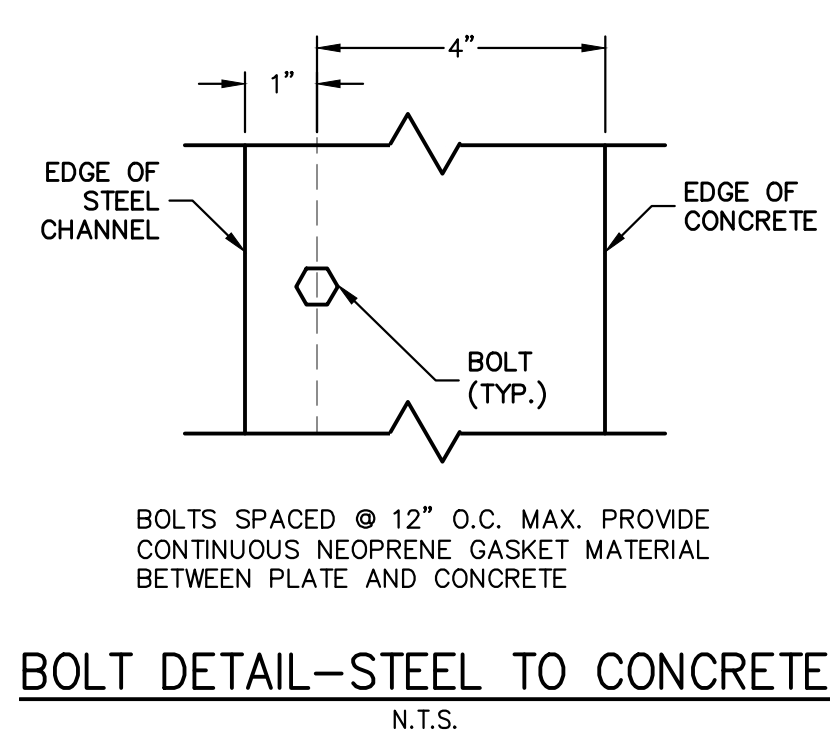
B-B SECTION
SCALE: 3/8"=1'



ORIFICE PLATE DETAIL
SCALE: 3/8"=1'



TRASH SCREEN AND PLATE DETAIL (PLAN)
N.T.S.



BOLT DETAIL-STEEL TO CONCRETE
N.T.S.



ENGINEER'S STATEMENT
PREPARED UNDER MY DIRECT SUPERVISION AND ON BEHALF OF JR ENGINEERING
Bryan T. Law
25043
6/11/26
BRYAN T. LAW, P.E.
COLORADO P.E. 25043
FOR AND ON BEHALF OF JR ENGINEERING, LLC

- OUTLET STRUCTURE PLATE AND GRADING NOTES:**
- ORIFICE PLATE:**
1. PROVIDE CONTINUOUS NEOPRENE GASKET MATERIAL BETWEEN THE ORIFICE PLATE AND CONCRETE AND BETWEEN THE RESTRICTOR PLATE AND CONCRETE.
 2. BOLT PLATE TO CONCRETE 12" MAX. ON CENTER.
- TRASH RACKS:**
3. TRASH RACKS SHALL BE 1 1/2" SCH.40 STEEL PIPE, GALVANIZED, @ 6" CENTERS. SUPPORT BARS SHALL BE 1/2"x2" STEEL RECTANGULAR BARS, GALVANIZED, @ 36". ALL TRASH RACKS SHALL BE MOUNTED USING STAINLESS STEEL HARDWARE.
 4. REMOVABLE TRASH RACK SECTIONS SHALL BE MOUNTED USING STAINLESS STEEL HARDWARE AND PROVIDED WITH HINGED & LOCKABLE OR BOLTABLE ACCESS PANELS AS SHOWN ON THE PLANS.
 5. STEEL TRASH RACKS SHALL BE HOT DIP GALVANIZED AND MAY BE HOT POWDER COATED AFTER GALVANIZING.
 6. STRUCTURAL STEEL FOR GRATES, ORIFICE PLATES, AND BARS SHALL BE GALVANIZED AND SHALL BE IN ACCORDANCE WITH CDOT STANDARD SPECIFICATIONS, SUBSECTION 712.06.
 7. ALL HARDWARE, BOLTS, AND FASTENERS SHALL BE STAINLESS STEEL.
 8. CONTRACTOR SHALL SUBMIT SHOP DRAWINGS FOR ALL PLATES AND GRATING FOR ENGINEER'S APPROVAL PRIOR TO CONSTRUCTION.

UNTIL SUCH TIME AS THESE DRAWINGS ARE APPROVED BY THE APPROPRIATE REVIEWING AGENCIES, JR ENGINEERING APPROVES THEIR USE. DESIGNATED BY WRITTEN AUTHORIZATION.

PREPARED FOR
LRY
1172 GREENLAND FOREST DRIVE
MONUMENT, CO 80106
SCOTT SMITH
(719) 499-7764

J.R. ENGINEERING
A Westman Company
Central 303-740-8888 • Colorado Springs 719-588-2583
Fort Collins 970-491-9888 • www.jrengineering.com

NO.	REVISION	DATE	BY

H-SCALE: 3/8"=1'
V-SCALE: 3/8"=1'
DATE: 01/29/26
DESIGNED BY: GAG
DRAWN BY: TAU
CHECKED BY:

LAZY Y AND ROCKING J
SUBDIVISION
POND A OUTLET

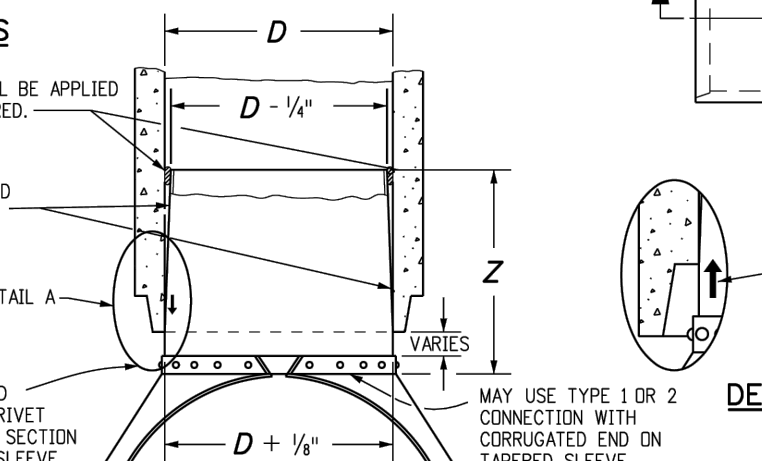
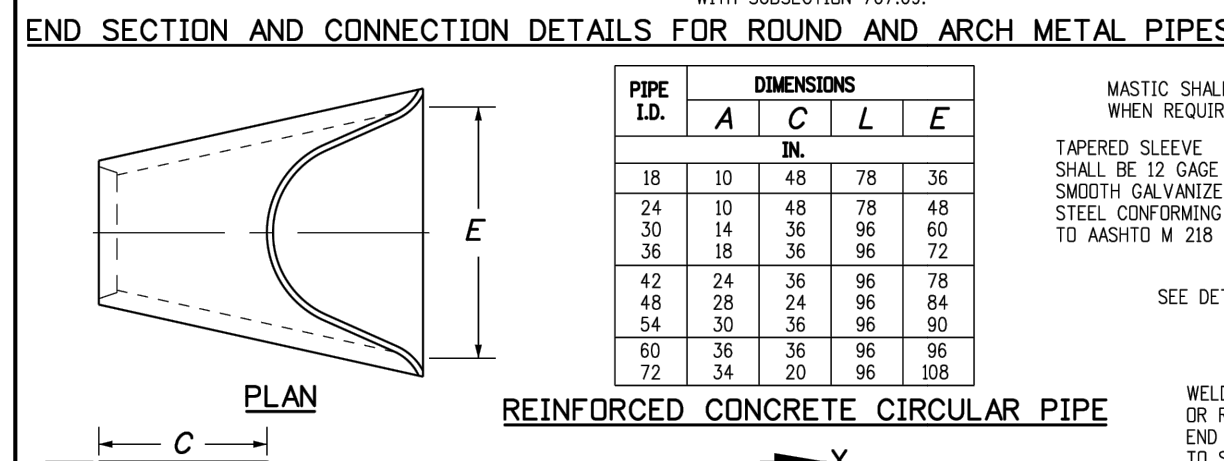
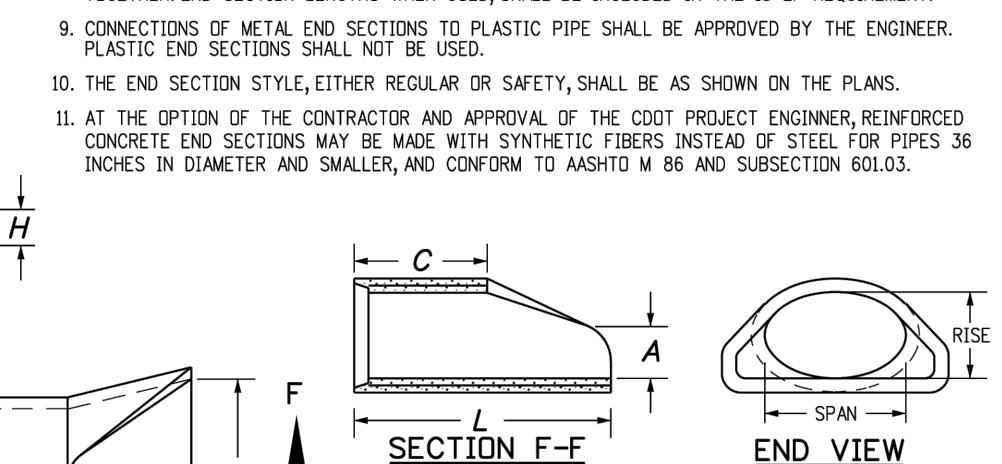
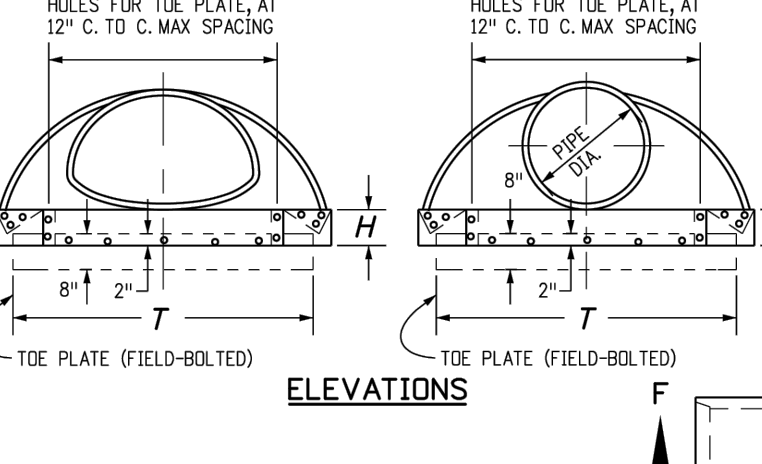
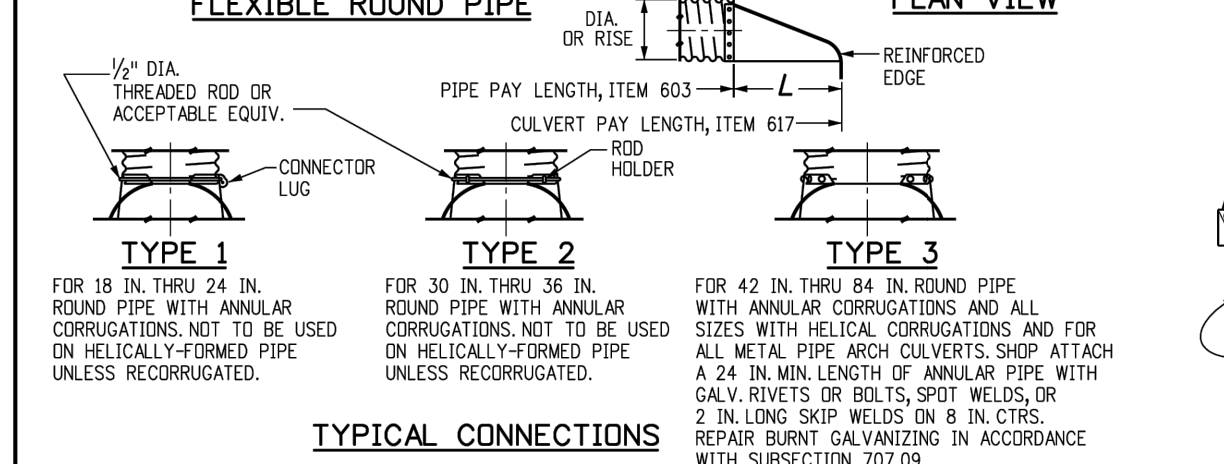
SHEET 10 OF 16
JOB NO. 25228.00

PIPE DIA.	THICKNESS	DIMENSIONS					
		A	B	H	L	W	T
12	0.064	6	6	6	21	24	34
18	0.064	8	10	6	31	36	46
24	0.064	10	13	6	41	48	58
30	0.079	12	16	8	51	60	70
36	0.079	14	19	9	60	72	84
42	0.109	16	22	11	69	84	106
48	0.109	18	27	12	78	90	112
54	0.109	18	30	12	84	102	124
60	0.109	18	33	12	87	114	136
66	0.109	18	36	12	87	120	142
72	0.109	18	39	12	87	126	154
78	0.109	18	42	12	87	132	164
84	0.109	18	45	12	87	138	170

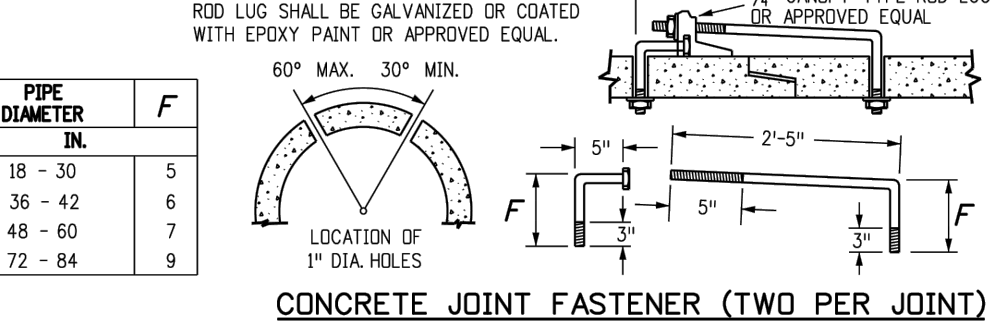
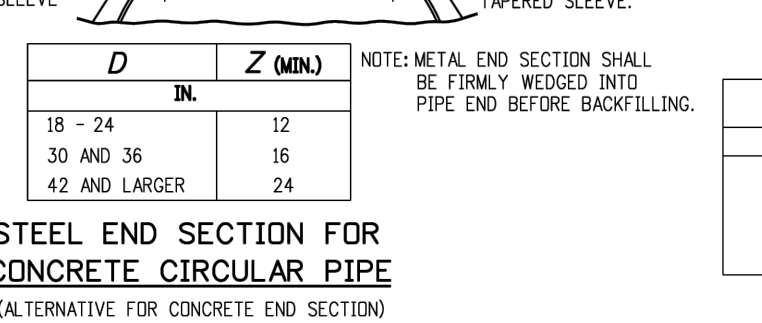
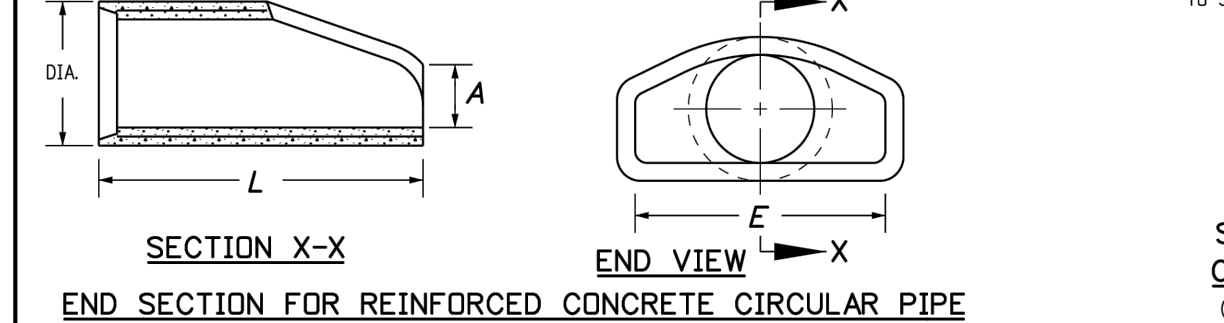
PIPE ARCH	THICKNESS	DIMENSIONS					
		A	B	H	L	W	T
21 x 15	0.064	7	10	6	23	28	46
24 x 18	0.064	8	12	6	28	34	52
28 x 20	0.064	9	14	6	32	48	58
35 x 24	0.079	12	18	6	39	60	70
42 x 29	0.079	12	18	6	46	75	85
49 x 33	0.109	13	21	9	53	85	103
57 x 36	0.109	18	26	12	63	90	108
64 x 43	0.109	18	30	12	70	102	120
71 x 47	0.109	18	33	12	77	114	132

GENERAL NOTES

- DIMENSIONS OF END SECTIONS MAY VARY SLIGHTLY FROM THOSE SHOWN ON THE TABLES DUE TO DIFFERENT MANUFACTURERS' CONFIGURATIONS.
- CONCRETE END SECTIONS SHALL BE FURNISHED WITH TONGUE OR GROOVE AS REQUIRED.
- DESIGN LENGTH OF PIPE OR SIDE DRAIN IS BASED ON LENGTH OF END SECTION SHOWN IN TABLE. ANY ADDITIONAL PIPE REQUIRED TO PROVIDE THE DESIGN LENGTH SHALL BE FURNISHED BY THE CONTRACTOR AT NO ADDITIONAL COST TO THE PROJECT.
- THE INSIDE CONFIGURATION AND THE JOINT OF CONCRETE END SECTION AND PIPE SHALL MATCH.
- END SECTIONS FOR CMP ARCH PIPE SHALL MATCH THE DIMENSIONS OF THE PIPE SHOWN ON THE PLANS.
- GALVANIZED TIE PLATE AS SHOWN IS REQUIRED ON END SECTIONS FOR CORRUGATED STEEL PIPE AND SHALL BE THE SAME THICKNESS AS END SECTIONS. TIE PLATE SHALL BE FIELD-BOLTED TO END SECTION WITH 1/2" IN. GALVANIZED BOLTS AND WASHERS.
- GALVANIZED STEEL SHALL CONFORM TO ASTM A 101, M 218 OR M 232.
- CONCRETE PIPE JOINT FASTENERS, WHEN SHOWN ON PLANS, SHALL BE INSTALLED SO THAT A MINIMUM OF 15 LINEAR FEET OF THE OUTLET END OF THE PIPE ARE MECHANICALLY LOCKED TOGETHER. END SECTION LENGTHS WHEN USED SHALL BE INCLUDED IN THE 15' REQUIREMENT.
- CONNECTIONS OF METAL END SECTIONS TO PLASTIC PIPE SHALL BE APPROVED BY THE ENGINEER. PLASTIC END SECTIONS SHALL NOT BE USED.
- THE END SECTION STYLE, EITHER REGULAR OR SAFETY, SHALL BE AS SHOWN ON THE PLANS.
- AT THE OPTION OF THE CONTRACTOR AND APPROVAL OF THE CDDT PROJECT ENGINEER, REINFORCED CONCRETE END SECTIONS MAY BE MADE WITH SYNTHETIC FIBERS INSTEAD OF STEEL FOR PIPES 36 INCHES IN DIAMETER AND SMALLER, AND CONFORM TO ASTM M 96 AND SUBSECTION 601.03.



EQUIV. CIRCULAR DIA.	DIMENSIONS			
	MINIMUM SPAN	RISE	A	C
24	30	19	9	33
30	36	24	10	38
36	45	29	12	44
42	53	34	16	50
48	60	38	20	56
54	68	43	26	62
60	76	48	30	68



Computer File Information

Creation Date: 07/31/19

Designer Initials: JBK

Last Modification Date: 07/31/19

Detailer Initials: LTA

CAD Ver: MicroStation V8

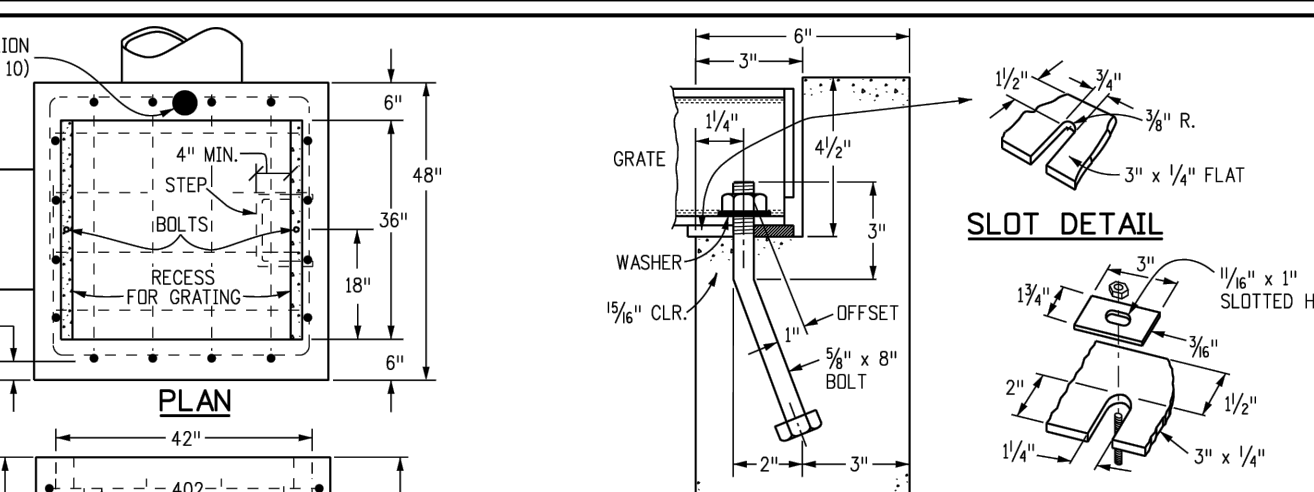
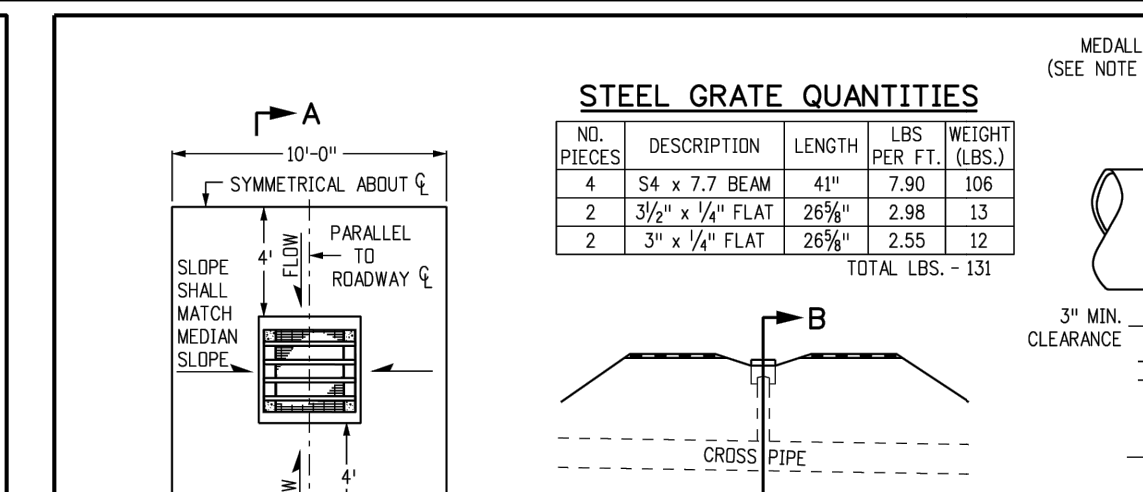
Sheet Revisions

No.	Date	Comments

Colorado Department of Transportation

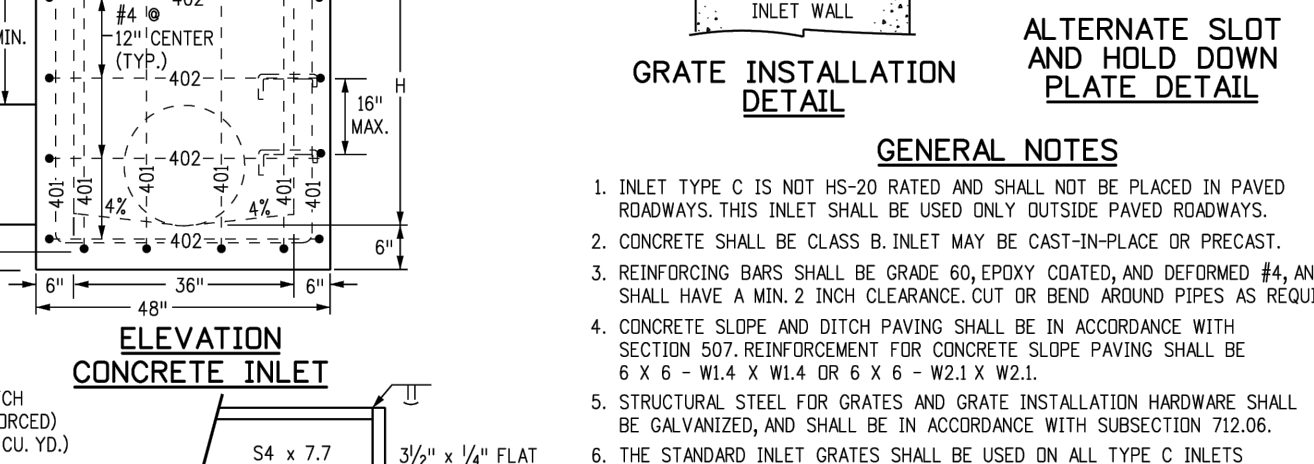
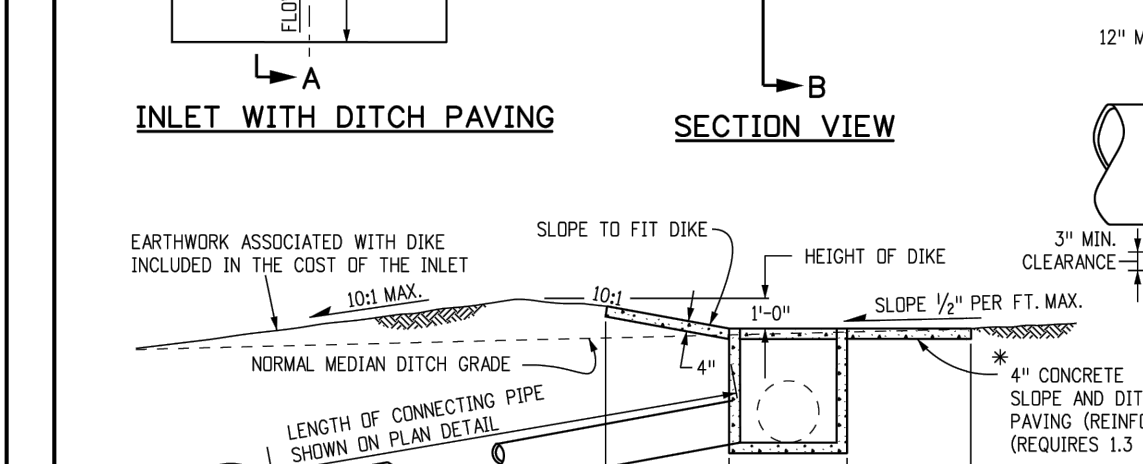
2829 West Howard Place
CDDT HQ, 3rd Floor
Denver, CO 80204
Phone: 303-757-9021 FAX: 303-757-9868

Project Development Branch JBK



QUANTITIES FOR ONE INLET

H	CONCRETE (CU. YDS.)	STEEL (LBS.)	NO. STEPS
2'-0"	1.0	76	0
3'-0"	1.1	81	0
4'-0"	1.2	97	0
4'-6"	1.3	102	1
5'-0"	1.5	117	2
5'-6"	1.6	123	2
6'-0"	1.7	138	2
6'-6"	1.9	143	3
7'-0"	2.0	159	3
7'-6"	2.2	180	4
8'-0"	2.4	185	4
8'-6"	2.5	200	4
9'-0"	2.6	206	5
9'-6"	2.8	221	5
10'-0"	2.9	236	6
11'-0"	3.3	252	6



BAR LIST FOR H = 2 FT. - 6 IN. AND BENDING DIAGRAM

MARK	NO.	HEIGHT	LENGTH
401	2	2'-0"	8'-0"
402	4	2'-6"	8'-0"
403	4	3'-0"	8'-0"
404	4	3'-6"	15'-4"

NOTE: ADD ONE BAR FOR EACH FT. INCREASE OF "H" ABOVE 2 FT. - 0 IN.

402 BARS SHALL BE EQUALLY SPACED FROM EACH OTHER.

Computer File Information

Creation Date: 07/31/19

Designer Initials: JBK

Last Modification Date: 07/31/19

Detailer Initials: LTA

CAD Ver: MicroStation V8

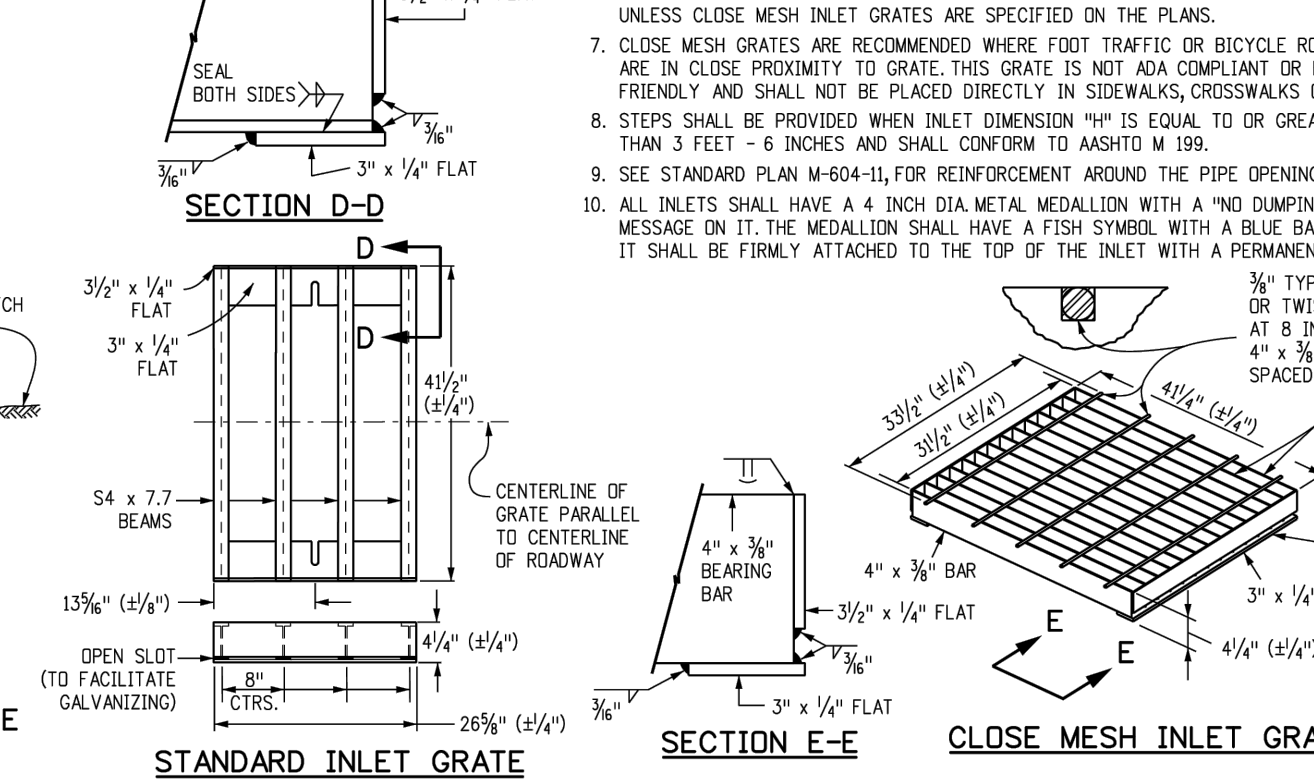
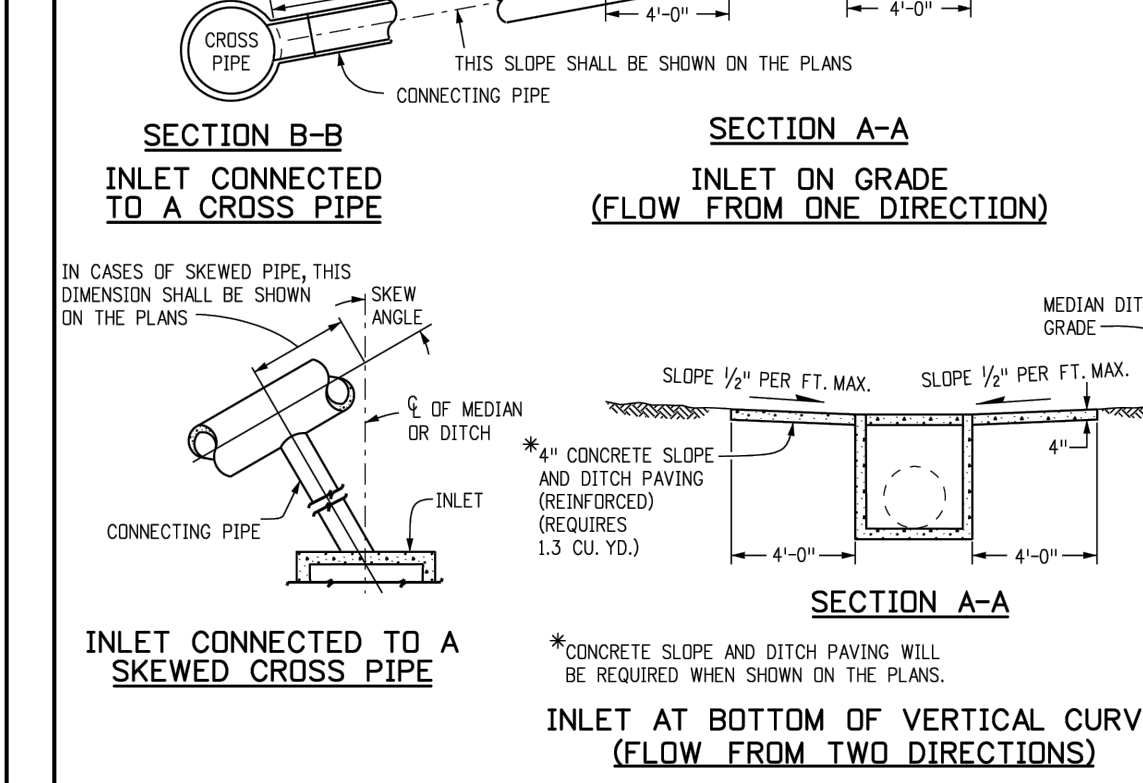
Sheet Revisions

No.	Date	Comments

Colorado Department of Transportation

2829 West Howard Place
CDDT HQ, 3rd Floor
Denver, CO 80204
Phone: 303-757-9021 FAX: 303-757-9868

Project Development Branch JBK



Computer File Information

Creation Date: 07/31/19

Designer Initials: JBK

Last Modification Date: 07/31/19

Detailer Initials: LTA

CAD Ver: MicroStation V8

Computer File Information

Creation Date: 07/31/19

Designer Initials: JBK

Last Modification Date: 07/31/19

Detailer Initials: LTA

CAD Ver: MicroStation V8

Sheet Revisions

No.	Date	Comments

Colorado Department of Transportation

2829 West Howard Place
CDDT HQ, 3rd Floor
Denver, CO 80204
Phone: 303-757-9021 FAX: 303-757-9868

Project Development Branch JBK

Computer File Information

Creation Date: 07/31/19

Designer Initials: JBK

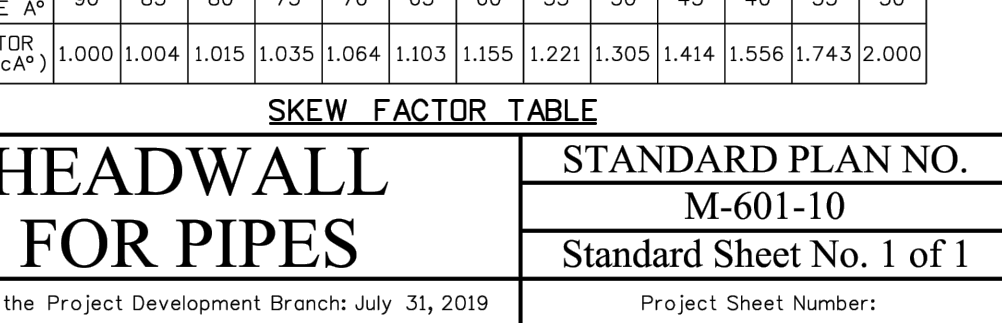
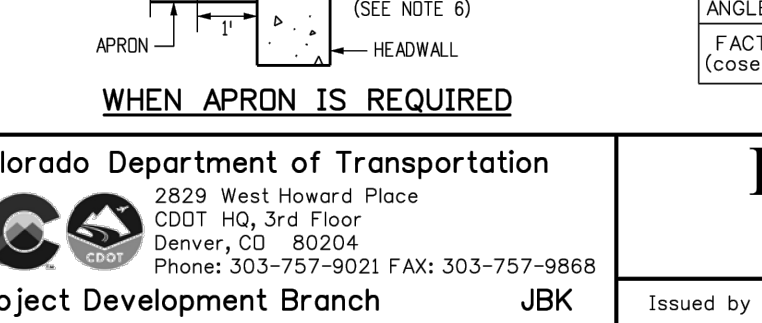
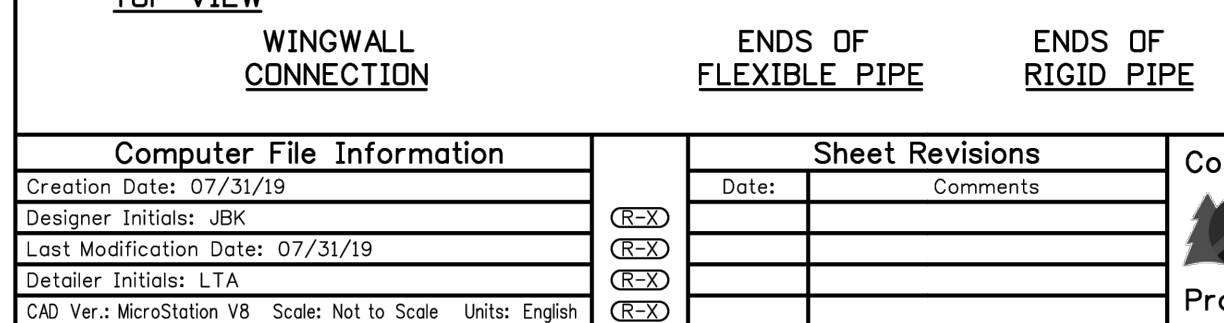
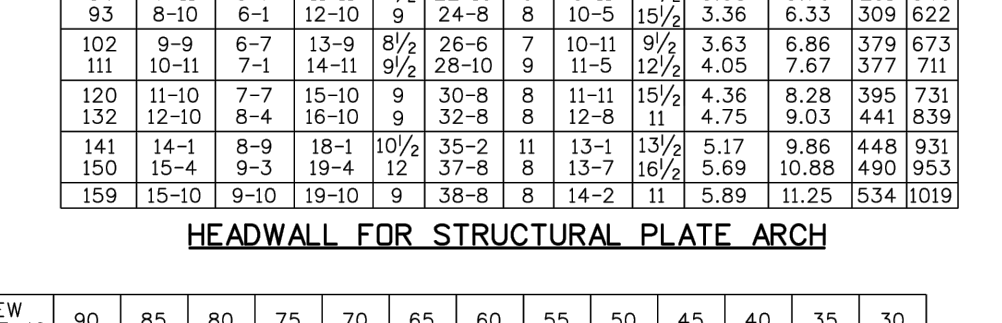
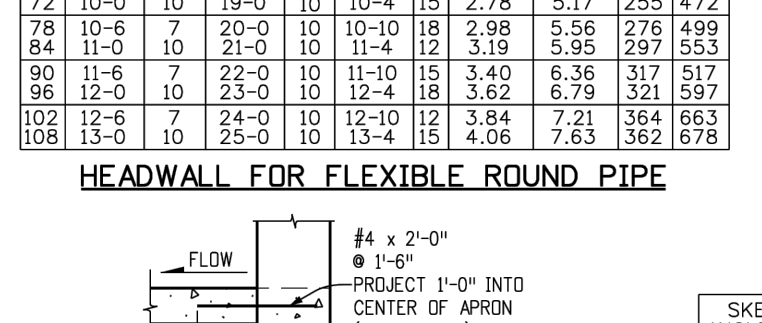
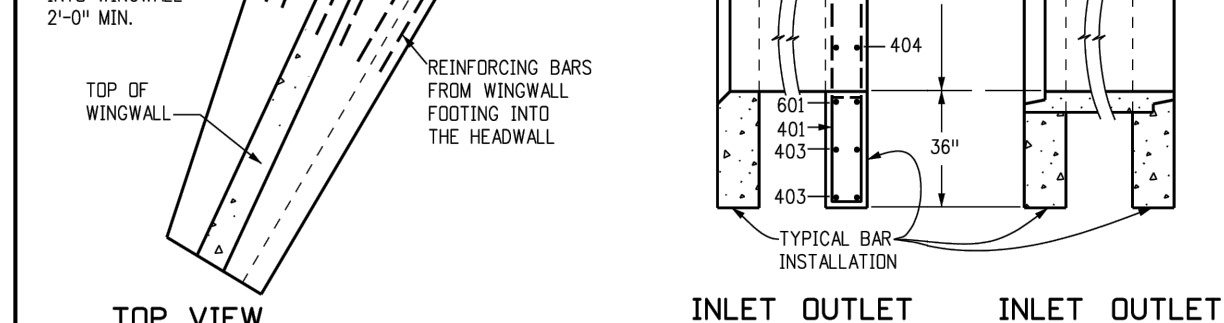
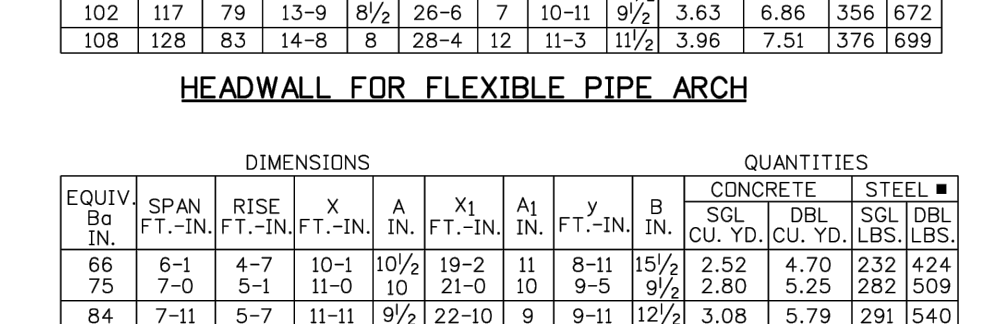
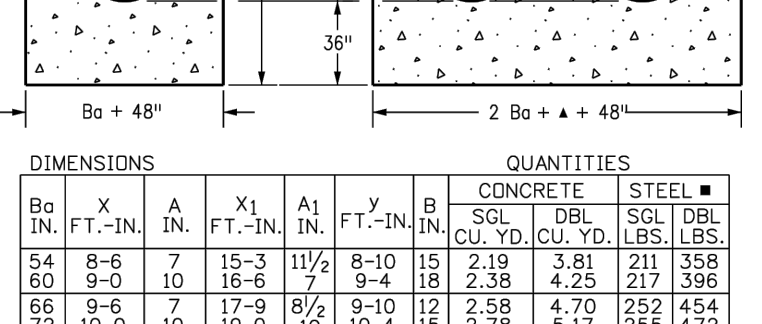
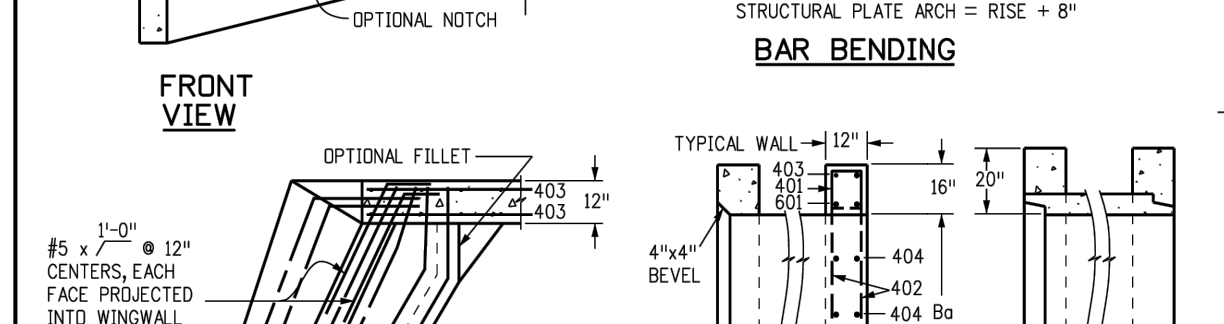
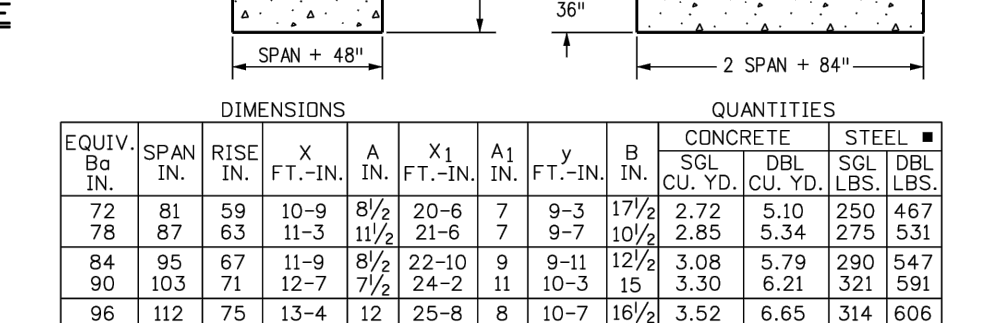
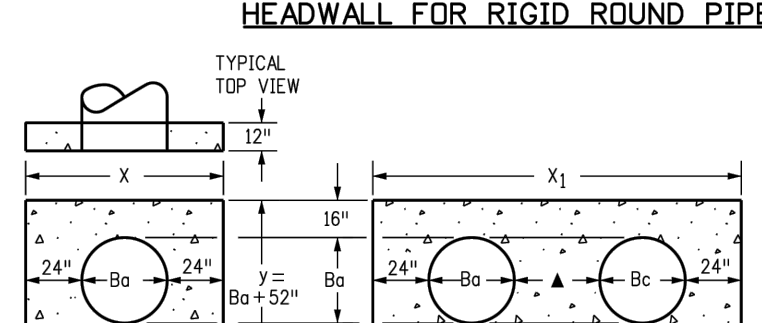
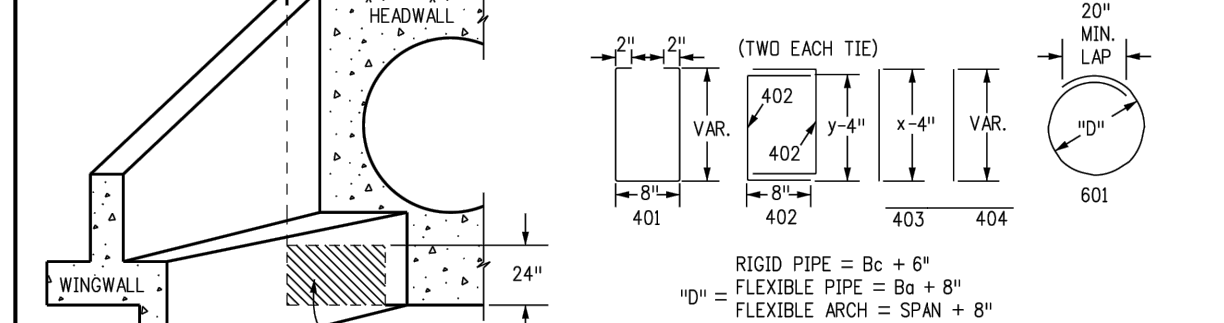
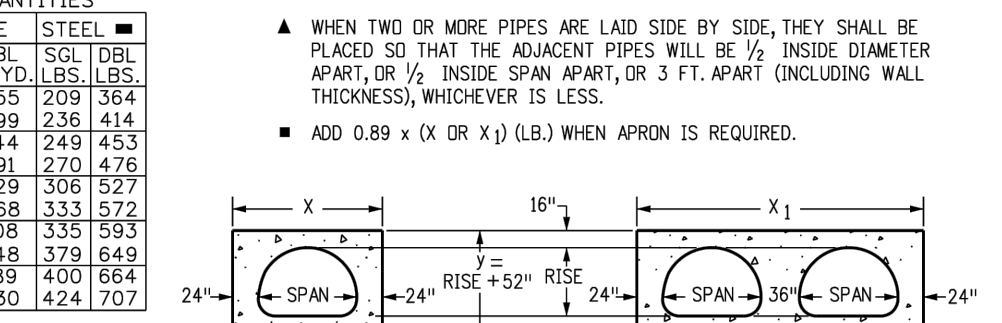
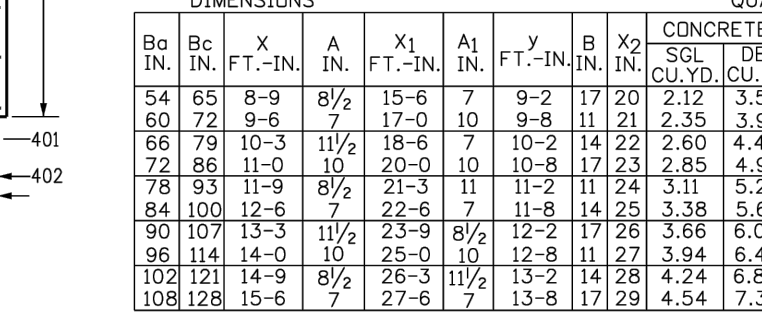
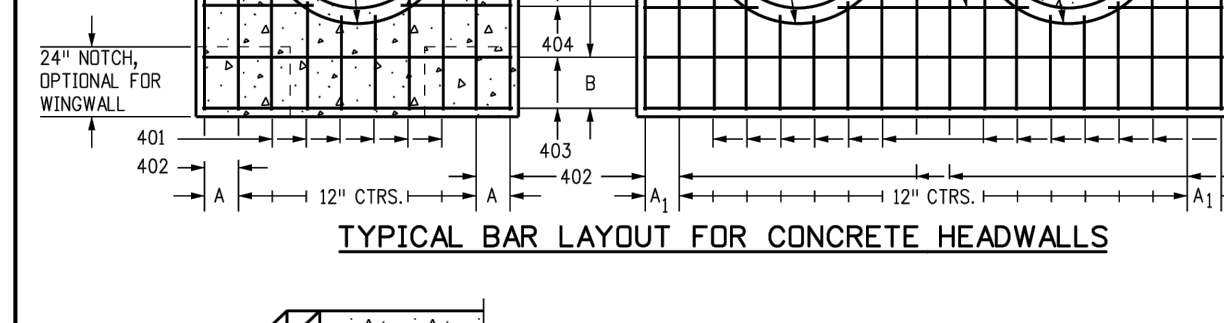
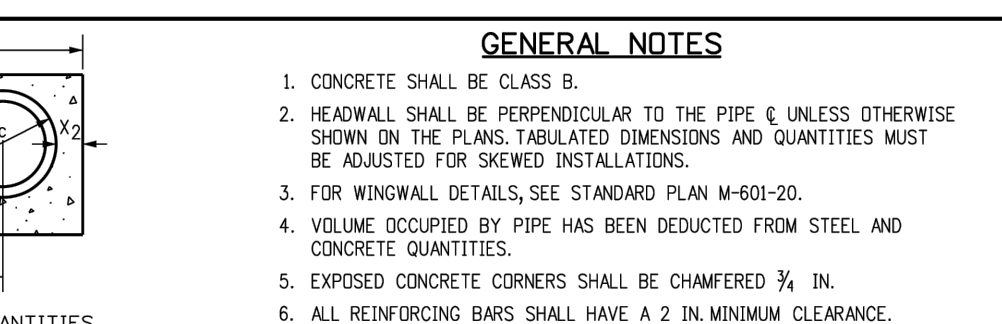
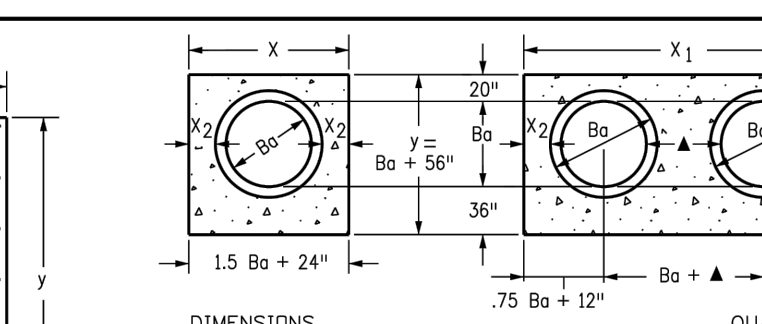
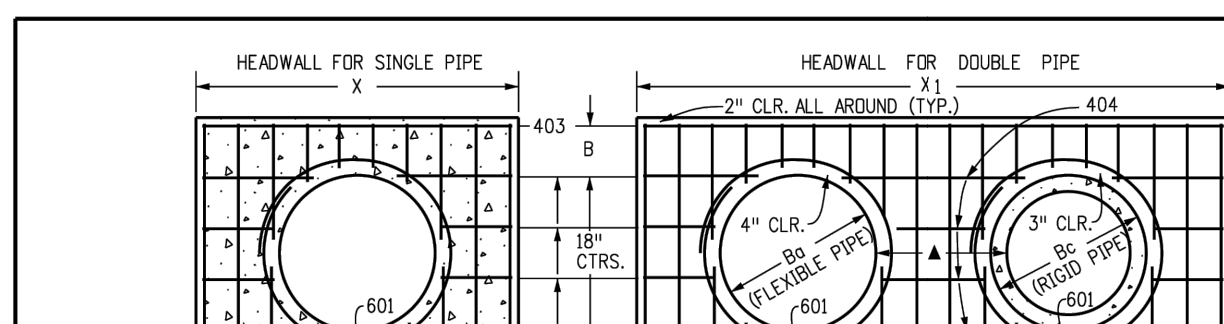
Last Modification Date: 07/31/19

Detailer Initials: LTA

CAD Ver: MicroStation V8

Sheet Revisions

No.	Date	Comments



Computer File Information

Creation Date: 07/31/19

Designer Initials: JBK

Last Modification Date: 07/31/19

Detailer Initials: LTA

CAD Ver: MicroStation V8

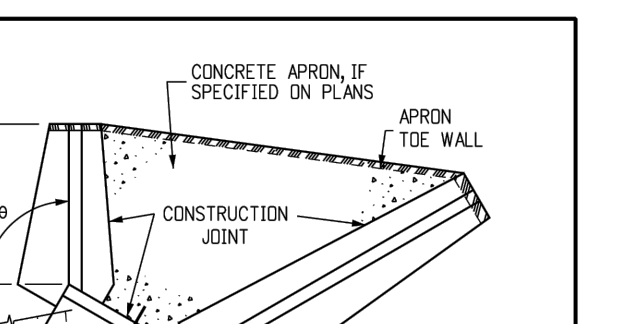
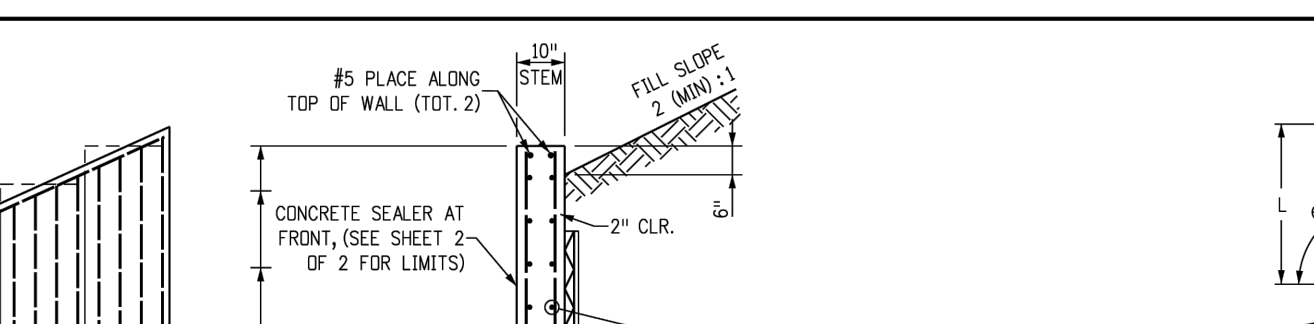
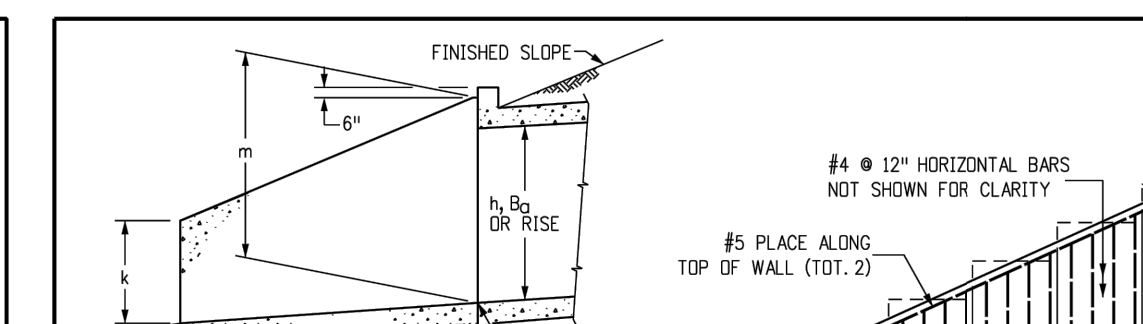
Sheet Revisions

No.	Date	Comments

Colorado Department of Transportation

2829 West Howard Place
CDDT HQ, 3rd Floor
Denver, CO 80204
Phone: 303-757-9021 FAX: 303-757-9868

Project Development Branch JBK



Computer File Information

Creation Date: 07/31/19

Designer Initials: JBK

Last Modification Date: 07/31/19

Detailer Initials: LTA

CAD Ver: MicroStation V8

Sheet Revisions

No.	Date	Comments

Colorado Department of Transportation

2829 West Howard Place
CDDT HQ, 3rd Floor
Denver, CO 80204
Phone: 303-757-9021 FAX: 303-757-9868

Project Development Branch JBK

Computer File Information

Creation Date: 07/31/19

Designer Initials: JBK

Last Modification Date: 07/31/19

Detailer Initials: LTA

CAD Ver: MicroStation V8

Sheet Revisions

No.	Date	Comments

Colorado Department of Transportation

2829 West Howard Place
CDDT HQ, 3rd Floor
Denver, CO 80204
Phone: 303-757-9021 FAX: 303-757-9868

Project Development Branch JBK

Computer File Information

Creation Date: 07/31/19

Designer Initials: JBK

Last Modification Date: 07/31/19

Detailer Initials: LTA

CAD Ver: MicroStation V8

Sheet Revisions

No.	Date	Comments

Colorado Department of Transportation

2829 West Howard Place
CDDT HQ, 3rd Floor
Denver, CO 80204
Phone: 303-757-9021 FAX: 303-757-9868

Project Development Branch JBK

Computer File Information

Creation Date: 07/31/19

Designer Initials: JBK

Last Modification Date: 07/31/19

Detailer Initials: LTA

CAD Ver: MicroStation V8

Sheet Revisions

No.	Date	Comments

Colorado Department of Transportation

2829 West Howard Place
CDDT HQ, 3rd Floor
Denver, CO 80204
Phone: 303-757-9021 FAX: 303-757-9868

Project Development Branch JBK

Computer File Information

Creation Date: 07/31/19

Designer Initials: JBK

Last Modification Date: 07/31/19

Detailer Initials: LTA

CAD Ver: MicroStation V8

Sheet Revisions

No.	Date	Comments

Colorado Department of Transportation

2829 West Howard Place
CDDT HQ, 3rd Floor
Denver, CO 80204
Phone: 303-757-9021 FAX: 303-757-9868

Project Development Branch JBK

Computer File Information

Creation Date: 07/31/19

Designer Initials: JBK

Last Modification Date: 07/31/19

Detailer Initials: LTA

CAD Ver: MicroStation V8

Sheet Revisions

No.	Date	Comments

Colorado Department of Transportation

2829 West Howard Place
CDDT HQ, 3rd Floor
Denver, CO 80204
Phone: 303-757-9021 FAX: 303-757-9868

Project Development Branch JBK

c-BARS AND REINFORCING STEEL QUANTITY (EXCLUDE TOE WALL)		* REINFORCING STEEL QUANTITY INCLUDES STEM AND FOOTING QUANTITIES, BUT DOES NOT INCLUDE TOE WALL QUANTITIES.																							
L (MULTIPLE OF m)	k (FT)	≤ (1.0 x m)				≤ (1.25 x m)				≤ (1.5 x m)				≤ (2.25 x m)				≤ (3.0 x m)				≤ (3.5 x m)			
		*REINF. LB./L.F.	*REINF. LB./L.F.	*REINF. LB./L.F.	*REINF. LB./L.F.	*REINF. LB./L.F.	*REINF. LB./L.F.	*REINF. LB./L.F.	*REINF. LB./L.F.	*REINF. LB./L.F.	*REINF. LB./L.F.	*REINF. LB./L.F.	*REINF. LB./L.F.	*REINF. LB./L.F.	*REINF. LB./L.F.	*REINF. LB./L.F.	*REINF. LB./L.F.	*REINF. LB./L.F.	*REINF. LB./L.F.	*REINF. LB./L.F.	*REINF. LB./L.F.	*REINF. LB./L.F.	*REINF. LB./L.F.		
14	4	#4 10	53.60	#5 10	52.95	#5 10	57.10	#5 10	62.22	#5 10	62.43	#5 10	62.09	#5 10	65.38	#5 10	65.15	#5 10	67.10	#5 10	66.94	#5 10	70.56	#5 10	70.56
	5	#4 10	55.86	#5 10	60.46	#5 10	59.60	#5 10	62.89	#5 10	65.23	#5 10	64.88	#5 10	68.34	#5 10	68.11	#5 10	70.17	#5 10	69.90	#5 10	73.90	#5 10	73.90
	6	#5 10	64.43	#5 10	70.60	#6 10	69.69	#6 10	74.93	#6 10	74.45	#6 10	78.30	#6 10	83.64	#6 10	83.40	#6 10	83.22	#6 10	83.05	#7 10	89.64	#7 10	89.64
	7	#5 10	74.71	#6 10	73.76	#6 10	72.83	#6 10	78.32	#6 10	77.84	#6 10	81.87	#6 10	87.45	#6 10	87.02	#6 10	86.86	#7 10	87.02	#7 10	93.73	#7 10	93.73
	8	#5 10	85.89	#6 10	82.82	#6 10	81.97	#6 10	86.67	#6 10	86.19	#6 10	90.67	#6 10	96.37	#6 10	95.97	#6 10	95.78	#7 10	95.78	#7 10	102.24	#7 10	102.24
	9	#5 10	98.17	#6 10	94.23	#6 10	93.39	#6 10	97.22	#6 10	96.74	#6 10	101.54	#6 10	107.34	#6 10	106.95	#6 10	106.76	#7 10	106.76	#7 10	113.13	#7 10	113.13
13	4	#4 10	50.51	#4 10	49.25	#5 10	53.71	#5 10	53.09	#5 10	52.36	#5 10	55.85	#5 10	55.74	#5 10	57.67	#5 10	57.67	#5 10	57.51	#5 10	59.93	#5 10	59.93
	5	#4 10	52.66	#4 10	51.37	#5 10	56.09	#5 10	55.46	#5 10	54.99	#5 10	58.98	#5 10	59.01	#5 10	60.33	#5 10	60.33	#5 10	60.17	#5 10	62.72	#5 10	62.72
	6	#4 10	54.92	#5 10	59.48	#5 10	60.31	#5 10	63.56	#5 10	63.08	#5 10	67.08	#5 10	67.53	#5 10	69.74	#5 10	69.74	#5 10	72.95	#5 10	72.81	#5 10	72.81
	7	#4 10	57.36	#5 10	62.16	#5 10	63.05	#5 10	66.66	#5 10	66.18	#5 10	70.16	#5 10	70.61	#5 10	72.75	#5 10	72.75	#5 10	76.52	#5 10	76.20	#5 10	76.20
	8	#4 10	66.39	#5 10	72.82	#5 10	73.97	#5 10	78.41	#5 10	77.93	#5 10	81.91	#5 10	82.37	#5 10	84.52	#5 10	84.52	#5 10	88.30	#5 10	87.84	#5 10	87.84
	9	#5 10	78.10	#6 10	87.23	#6 10	88.03	#6 10	92.72	#6 10	92.24	#6 10	96.22	#6 10	96.68	#6 10	98.83	#6 10	98.83	#6 10	102.60	#6 10	101.93	#6 10	101.93
12	2	#4 10	43.91	#4 10	42.65	#4 10	41.82	#4 10	41.22	#4 10	40.78	#4 10	41.29	#4 10	41.61	#4 10	41.93	#4 10	42.25	#4 10	42.57	#4 10	42.89	#4 10	43.21
	3	#4 10	45.82	#4 10	44.55	#4 10	43.71	#4 10	43.11	#4 10	42.66	#4 10	43.17	#4 10	43.49	#4 10	43.81	#4 10	44.13	#4 10	44.45	#4 10	44.77	#4 10	45.09
	4	#4 10	47.80	#4 10	46.51	#4 10	45.65	#4 10	45.05	#4 10	44.60	#4 10	45.11	#4 10	45.43	#4 10	45.75	#4 10	46.07	#4 10	46.39	#4 10	46.71	#4 10	47.03
	5	#4 10	49.84	#4 10	48.53	#4 10	47.66	#4 10	47.06	#4 10	46.61	#4 10	47.12	#4 10	47.44	#4 10	47.76	#4 10	48.08	#4 10	48.40	#4 10	48.72	#4 10	49.04
	6	#4 10	51.99	#4 10	50.65	#5 10	50.01	#5 10	49.34	#5 10	48.89	#5 10	49.40	#5 10	49.72	#5 10	50.04	#5 10	50.36	#5 10	50.68	#5 10	51.00	#5 10	51.32
	7	#4 10	54.30	#5 10	58.80	#5 10	57.87	#5 10	57.27	#5 10	56.82	#5 10	57.33	#5 10	57.65	#5 10	57.97	#5 10	58.29	#5 10	58.61	#5 10	58.93	#5 10	59.25
	8	#5 10	62.91	#5 10	61.45	#5 10	60.61	#5 10	60.01	#5 10	59.56	#5 10	60.07	#5 10	60.39	#5 10	60.71	#5 10	61.03	#5 10	61.35	#5 10	61.67	#5 10	61.99
	9	#5 10	75.04	#6 10	84.15	#6 10	83.01	#6 10	82.41	#6 10	81.96	#6 10	82.47	#6 10	82.79	#6 10	83.11	#6 10	83.43	#6 10	83.75	#6 10	84.07	#6 10	84.39
11	2	#4 10	41.70	#4 10	40.42	#4 10	39.57	#4 10	38.96	#4 10	38.50	#4 10	39.01	#4 10	39.33	#4 10	39.65	#4 10	39.97	#4 10	40.29	#4 10	40.61	#4 10	40.93
	3	#4 10	43.77	#4 10	42.27	#4 10	41.40	#4 10	40.79	#4 10	40.33	#4 10	40.84	#4 10	41.16	#4 10	41.48	#4 10	41.80	#4 10	42.12	#4 10	42.44	#4 10	42.76
	4	#4 10	45.48	#4 10	44.16	#4 10	43.28	#4 10	42.66	#4 10	42.20	#4 10	42.71	#4 10	43.03	#4 10	43.35	#4 10	43.67	#4 10	43.99	#4 10	44.31	#4 10	44.63
	5	#4 10	47.46	#4 10	46.10	#4 10	45.21	#4 10	44.58	#4 10	44.12	#4 10	44.63	#4 10	44.95	#4 10	45.27	#4 10	45.59	#4 10	45.91	#4 10	46.23	#4 10	46.55
	6	#4 10	49.52	#4 10	48.14	#4 10	47.23	#4 10	46.60	#4 10	46.14	#4 10	46.65	#4 10	46.97	#4 10	47.29	#4 10	47.61	#4 10	47.93	#4 10	48.25	#4 10	48.57
	7	#4 10	51.73	#4 10	50.31	#4 10	49.39	#4 10	48.76	#4 10	48.30	#4 10	48.81	#4 10	49.13	#4 10	49.45	#4 10	49.77	#4 10	50.09	#4 10	50.41	#4 10	50.73
	8	#4 10	54.00	#5 10	58.44	#5 10	57.45	#5 10	56.84	#5 10	56.38	#5 10	56.89	#5 10	57.21	#5 10	57.53	#5 10	57.85	#5 10	58.17	#5 10	58.49	#5 10	58.81
	9	#4 10	56.20	#5 10	60.87	#5 10	59.85	#5 10	59.23	#5 10	58.76	#5 10	59.27	#5 10	59.59	#5 10	59.91	#5 10	60.23	#5 10	60.55	#5 10	60.87	#5 10	61.19
10	2	#4 10	39.84	#4 10	38.53	#4 10	37.65	#4 10	37.03	#4 10	36.57	#4 10	37.08	#4 10	37.40	#4 10	37.72	#4 10	38.04	#4 10	38.36	#4 10	38.68	#4 10	39.00
	3	#4 10	41.68	#4 10	40.35	#4 10	39.47	#4 10	38.84	#4 10	38.38	#4 10	38.89	#4 10	39.21	#4 10	39.53	#4 10	39.85	#4 10	40.17	#4 10	40.49	#4 10	40.81
	4	#4 10	43.58	#4 10	42.22	#4 10	41.31	#4 10	40.67	#4 10	40.19	#4 10	40.70	#4 10	41.02	#4 10	41.34	#4 10	41.66	#4 10	41.98	#4 10	42.30	#4 10	42.62
	5	#4 10	45.53	#4 10	44.14	#4 10	43.21	#4 10	42.56	#4 10	42.07	#4 10	42.58	#4 10	42.90	#4 10	43.22	#4 10	43.54	#4 10	43.86	#4 10	44.18	#4 10	44.50
	6	#4 10	47.58	#4 10	46.14	#4 10	45.20	#4 10	44.53	#4 10	44.03	#4 10	44.54	#4 10	44.86	#4 10	45.18	#4 10	45.50	#4 10	45.82	#4 10	46.14	#4 10	46.46
	7	#4 10	49.79	#4 10	48.31	#4 10	47.34	#4 10	46.67	#4 10	46.17	#4 10	46.68	#4 10	47.00	#4 10	47.32	#4 10	47.64	#4 10	47.96	#4 10	48.28	#4 10	48.60
	8	#4 10	52.06	#4 10	50.54	#4 10	49.54	#4 10	48.87	#4 10	48.37	#4 10	48.88	#4 10	49.20	#4 10	49.52	#4 10	49.84	#4 10	50.16	#4 10	50.48	#4 10	50.80
9	2	#4 10	38.01	#4 10	36.75	#4 10	35.85	#4 10	35.21	#4 10	34.73	#4 10	35.24	#4 10	35.56	#4 10	35.88	#4 10	36.20	#4 10	36.52	#4 10	36.84	#4 10	37.16
	3	#4 10	39.93	#4 10	38.56	#4 10	37.64	#4 10	37.01	#4 10	36.51	#4 10	37.02	#4 10	37.34	#4 10	37.66	#4 10	37.98	#4 10	38.30	#4 10	38.62	#4 10	38.94
	4	#4 10	41.81	#4 10	40.40	#4 10	39.47	#4 10	38.84	#4 10	38.34	#4 10	38.85	#4 10	39.17	#4 10	39.49	#4 10	39.81	#4 10	40.13	#4 10	40.45	#4 10	40.77
	5	#4 10	43.75	#4 10	42.30	#4 10	41.35	#4 10	40.67	#4 10	40.17	#4 10	40.68	#4 10	41.00	#4 10	41.32	#4 10	41.64	#4 10	41.96	#4 10	42.28	#4 10	42.60
	6	#4 10	45.79	#4 10	44.30	#4 10	43.31	#4 10	42.62	#4 10	42.10	#4 10	42.61	#4 10	42.93	#4 10	43.25	#4 10	43.57	#4 10	43.89	#4 10	44.21	#4 10	44.53
	7	#4 10	48.04	#4 10	46.50	#4 10	45.49	#4 10	44.77	#4 10	44.23	#4 10	44.74	#4 10	45.06	#4 10	45.38	#4 10	45.70	#4 10	46.02	#4 10	46.34	#4 10	46.66
	8	#4 10	50.43	#4 10	48.84	#4 10	47.80	#4 10	47.06	#4 10	46.51	#4 10	47.02	#4 10	47.34	#4 10	47.66	#4 10	47.98	#4 10	48.30	#4 10	48.62	#4 10	48.94
8	2	#4 10	36.41	#4 10	35.14	#4 10	34.28	#4 10	33.62	#4 10	33.14	#4 10	33.65	#4 10	33.97	#4 10	34.29	#4 10	34.61	#4 10	34.93	#4 10	35.25	#4 10	35.57
	3	#4 10	38.23	#4 10	36.83	#4 10	35.88	#4 10	35.21	#4 10	34.71	#4 10	35.22	#4 10	35										