

9+00 9+60 10+20 10+80 11+40

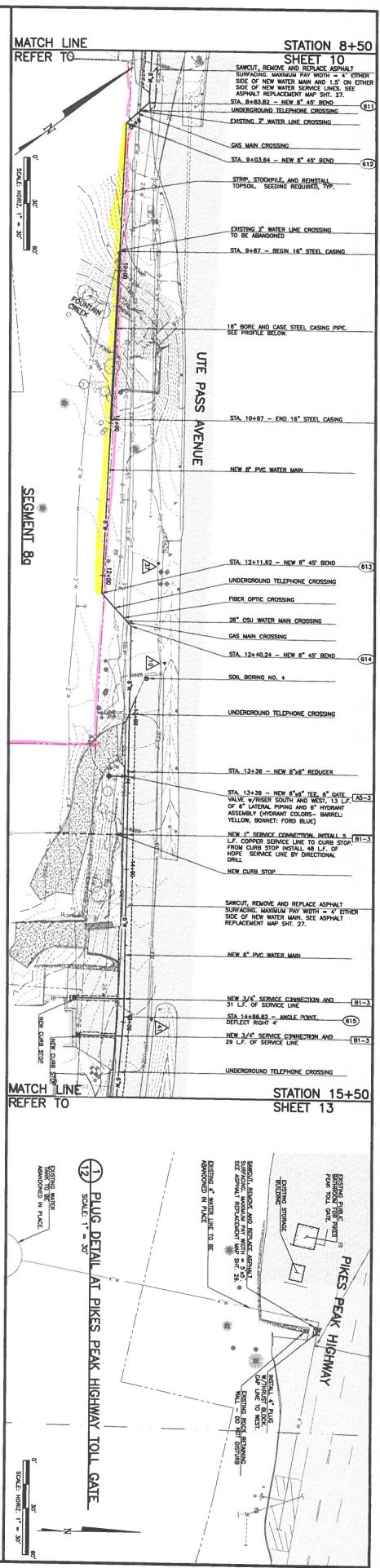
PROFILE - SEGMENT 8a

SCALE: 1" = 30' HORIZ., 1" = 5' VERT.

DATE OF LATEST REVISION:
01-09-2018 - REVISION TO REFLECT REDUCED
SCOPE OF WORK PER REVISIONED CONTRACT

THIS DRAWING IS THE PROPERTY OF GMS, INC. NO REUSE, REPRODUCTION, MODIFICATION OR EXTENSION OF THIS PROJECT DESIGN OR ANY PART THEREOF IS TO BE MADE WITHOUT THE WRITTEN CONSENT OF GMS, INC.	
DESIGNED BY: KW CHECKED BY: EM DATE: 01/09/2017 PROJECT NO.: 15061300 DWS FILE NO.: 2810	GMS, INC. CONSULTING ENGINEERS 611 S. WEBER, SUITE 200 COLORED SPRINGS, COLORADO 80903
SEGMENT 8a AND DETAIL WATER SYSTEM IMPROVEMENTS CASCADE METRO-POLITAN DISTRICT NO. 1	
SHEET 12 OF 30	

Address boring excavations and dewatering in GEC Plan and SWMP.



STATION 8+50 SHEET 10

REMOVE AND REPLACE ASPHALT SURFACING, MAXIMUM FRY WIDTH = 4' OTHER SIDE OF NEW WATER MAIN AND 1.5' ON EITHER SIDE OF NEW WATER MAIN SEE ASPHALT REPLACEMENT MAP SHEET 27.

STA. 8+63.82 - NEW 8" 45° BEND

UNDERGROUND TELEPHONE CROSSING

EXISTING 2" WATER LINE CROSSING

EXISTING 2" WATER LINE CROSSING

GAS MAIN CROSSING

STA. 8+50.64 - NEW 8" 45° BEND

STRIP, STOCKPILE, AND REINSTALL TOPSOIL. SEEDING REQUIRED, TYP.

EXISTING 2" WATER LINE CROSSING

STA. 9+87 - BEGIN 16" STEEL CASING

16" ROSE AND CASE STEEL CASING PIPE. SEE PROFILE BELOW

STA. 10+87 - END 16" STEEL CASING

NEW 6" PVC WATER MAIN

STA. 12+11.62 - NEW 8" 45° BEND

UNDERGROUND TELEPHONE CROSSING

FIBER OPTIC CROSSING

24" CSJ WATER MAIN CROSSING

GAS MAIN CROSSING

STA. 12+40.24 - NEW 8" 45° BEND

SOIL BORING NO. 4

UNDERGROUND TELEPHONE CROSSING

STA. 13+28 - NEW 8" 4" REDDOOR

STA. 13+28 - NEW 8" 4" 16" 8" GATE VALVE (FRISER SOUTH AND WEST, 13' L.F. OF 8" LATERAL PIPING AND 4" HODGKIN ASSEMBLY (HYDRANT COLORS - BARREL: YELLOW, BONNET: FORD BLUE)

NEW 1" SERVICE CONNECTION INSTALL 3' L.F. COPPER SERVICE LINE TO CURB STOP FROM CURB STOP (INSTALL 40' L.F. OF HOPE SERVICE LINE BY DIRECTIONAL DRILL)

NEW CURB STOP

REMOVE AND REPLACE ASPHALT SURFACING, MAXIMUM FRY WIDTH = 4' EITHER SIDE OF NEW WATER MAIN. SEE ASPHALT REPLACEMENT MAP SHEET 27.

NEW 6" PVC WATER MAIN

NEW 3/4" SERVICE CONNECTION AND 31' L.F. OF SERVICE LINE

STA. 14+88.62 - ANGLE POINT DEFLECT RIGHT 4"

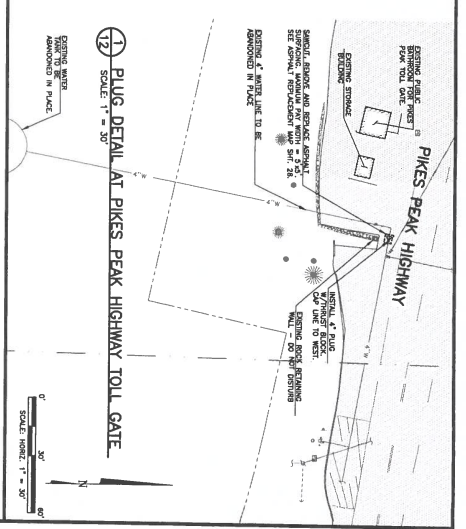
NEW 3/4" SERVICE CONNECTION AND 24' L.F. OF SERVICE LINE

UNDERGROUND TELEPHONE CROSSING

STATION 15+50 SHEET 13

PLUG DETAIL AT PIKES PEAK HIGHWAY TOLL GATE

SCALE: 1" = 30'



EXISTING PUBLIC STREET FROM TOLL GATE

EXISTING STRUCTURE

REMOVE AND REPLACE ASPHALT SURFACING, MAXIMUM FRY WIDTH = 4' EITHER SIDE OF NEW WATER MAIN. SEE ASPHALT REPLACEMENT MAP SHEET 27.

ADJOINING 4" WATER LINE TO BE ABANDONED IN PLACE

NEW 16" STEEL CASING

NEW 18" ROSE AND CASE STEEL CASING PIPE

NEW 6" PVC WATER MAIN

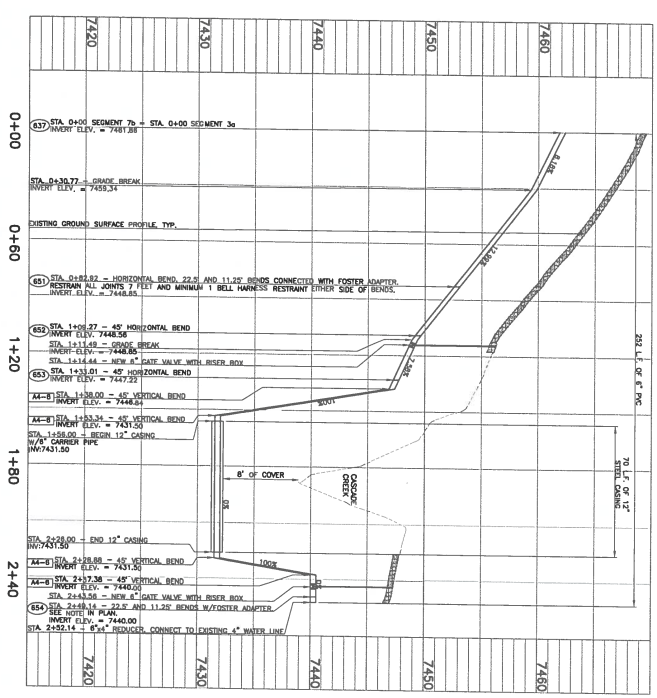
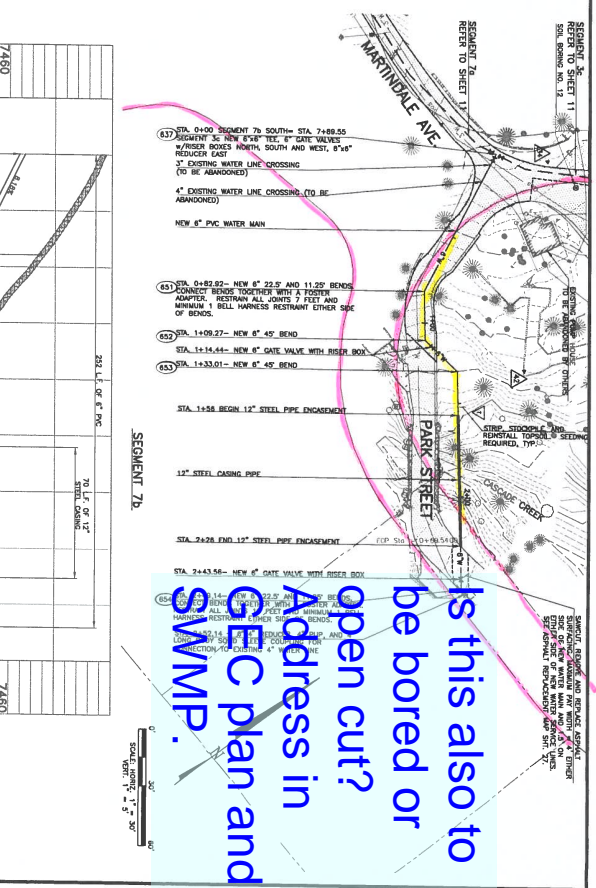
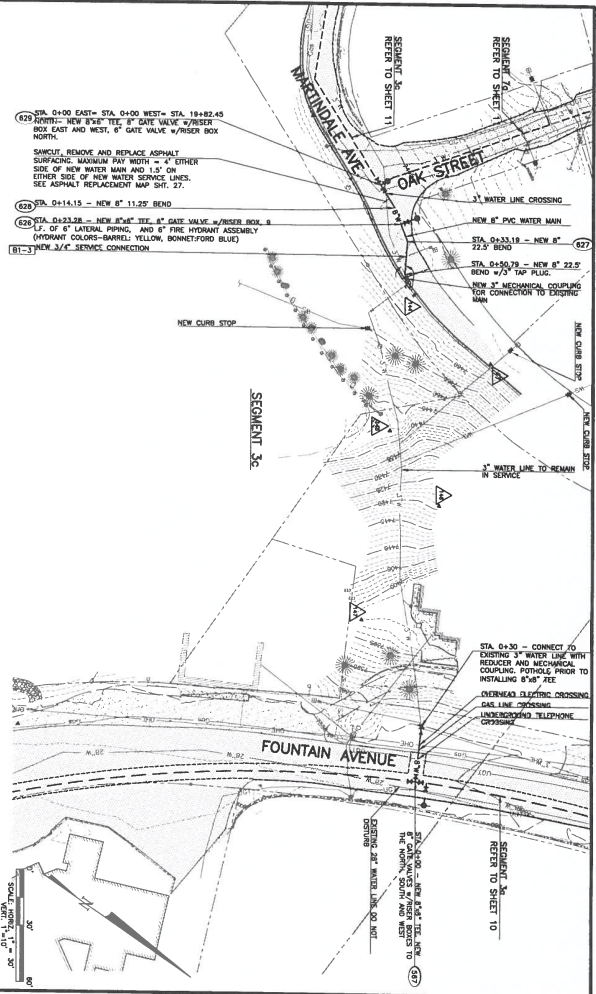
NEW 3/4" SERVICE CONNECTION AND 31' L.F. OF SERVICE LINE

NEW 3/4" SERVICE CONNECTION AND 24' L.F. OF SERVICE LINE

UNDERGROUND TELEPHONE CROSSING

PIKES PEAK HIGHWAY

SCALE: 1" = 30'



Is this also to be bored or open cut?
 Address in CEC plan and SAMP.

DATE OF LATEST REVISION: 01-08-2018 - REVISED TO REFLECT REDUCED SCOPE OF WORK FOR REVISIONS CONTAINED

THIS DRAWING IS THE PROPERTY OF GMS, INC. ANY REUSE OR REPRODUCTION OF THIS DRAWING FOR PROJECTS OR EXTENSIONS BY ANYONE OTHER THAN GMS, INC. IS STRICTLY PROHIBITED WITHOUT THE WRITTEN CONSENT OF GMS, INC.

DESIGNED BY: [Name] DATE: [Date]
 DRAWN BY: [Name] DATE: [Date]
 CHECKED BY: [Name] DATE: [Date]
 PROJECT NO.: 15061300
 SHEET NO.: 21 OF 30

GMS, INC.
 CONSULTING ENGINEERS
 6000 S. RIVER BLVD., SUITE 200
 COLORADO SPRINGS, COLORADO 80903

SEGMENTS 3c AND 7b
 WATER SYSTEM IMPROVEMENTS
 CASCADE METROPOLITAN DISTRICT NO. 1