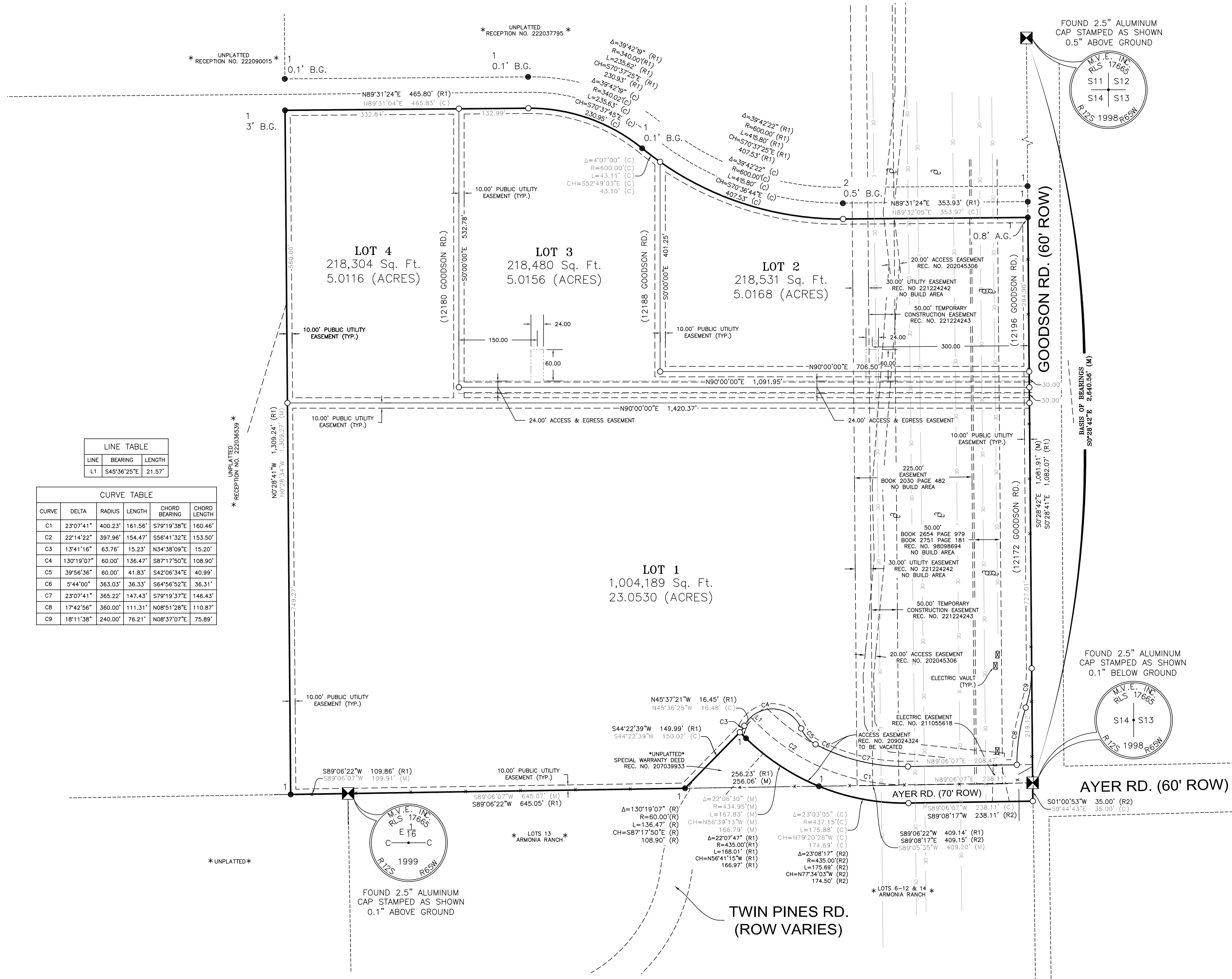


FINAL PLAT GUNNERS RIDGE

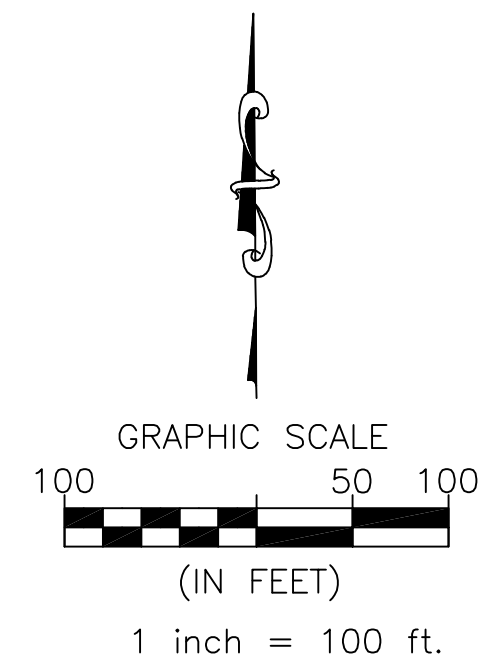
PORTION THE NORTHEAST QUARTER OF SECTION 14, TOWNSHIP 12 SOUTH, RANGE 65 WEST OF THE 6TH PRINCIPAL MERIDIAN
COUNTY OF EL PASO, STATE OF COLORADO



LINE TABLE		
LINE	BEARING	LENGTH
L1	S45°36'25"E	21.57'

CURVE TABLE					
CURVE	DELTA	RADIUS	LENGTH	CHORD BEARING	CHORD LENGTH
C1	23°07'41"	400.23'	161.56'	S79°19'38"E	160.46'
C2	22°14'22"	397.96'	154.47'	S56°41'32"E	153.50'
C3	13°41'16"	63.76'	15.23'	N34°38'09"E	15.20'
C4	13°01'07"	60.00'	136.47'	S87°17'50"E	108.90'
C5	39°56'36"	60.00'	41.83'	S42°06'34"E	40.99'
C6	5°44'00"	363.03'	36.33'	S64°56'52"E	36.31'
C7	23°07'41"	365.22'	147.43'	S79°19'37"E	146.43'
C8	17°42'56"	360.00'	111.31'	N08°51'28"E	110.87'
C9	18°11'38"	240.00'	76.21'	N08°37'07"E	75.89'

- ### LEGEND
- SET 5 REBAR WITH 1.5" YELLOW PLASTIC CAP STAMPED "PLS 38794" 0.1' BELOW GROUND
 - ⊠ FOUND ALIQUOT CORNER STAMPED AS SHOWN
 - FOUND NO. 5 REBAR WITH 1.5" ORANGE PLASTIC CAP STAMPED 38069 FLUSH WITH GROUND OR AS NOTED
 - FOUND NO. 5 REBAR WITH BROKEN 1.5" ORANGE PLASTIC CAP STAMPED 38069 FLUSH WITH GROUND OR AS NOTED
 - (R) RECORD VALUE
 - (M) MEASURED VALUE
 - (C) CALCULATED VALUE
 - P.O.B. POINT OF BEGINNING
 - BOUNDARY LINE
 - - - ADJOINER LINES
 - - - BARBED-WIRE FENCE
 - OHE OVERHEAD ELECTRIC LINE
 - A.G. ABOVE GROUND
 - B.G. BELOW GROUND
 - R1 RECORD BEARINGS AND DISTANCES SHOWN ON SPECIAL WARRANTY DEED - RECEPTION NO. 222110914
 - R2 RECORD BEARINGS AND DISTANCES SHOWN ON QUIT CLAIM DEED - RECEPTION NO. 222128915
 - (XXXX) NUMBER ADDRESS
 - * AREA NOT INCLUDED IN THIS SUBDIVISION



REVISIONS			
No.	Remarks	Date	By
2	County comments	5/11/23	RB
3	County comments	6/7/23	RB
4	County comments	7/17/23	RB
5	County comments	10/22/23	RB

BOMBACINI
LAND SURVEYING

825 Tyco Ct.
Colorado Springs - Colorado
E-mail: rafael@bombacini.com
www.bombacini.com
(719) 440-3763

PCD FILE NO: MS-23-003