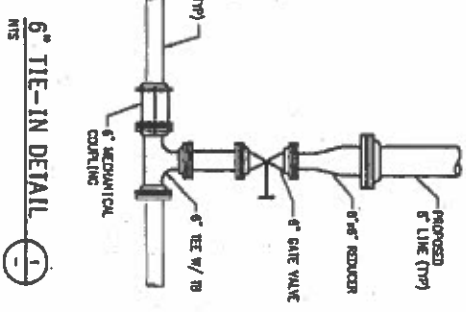
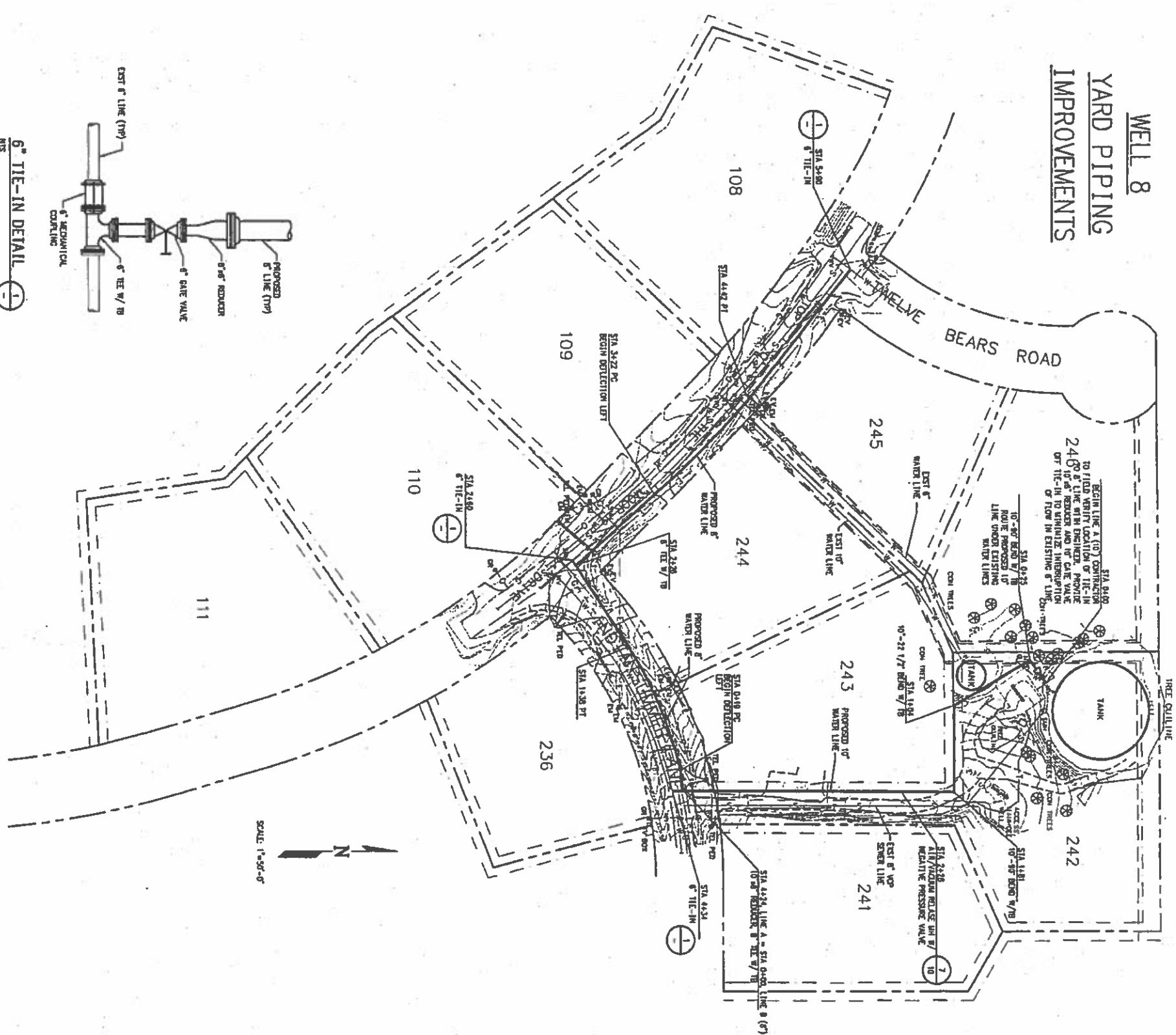
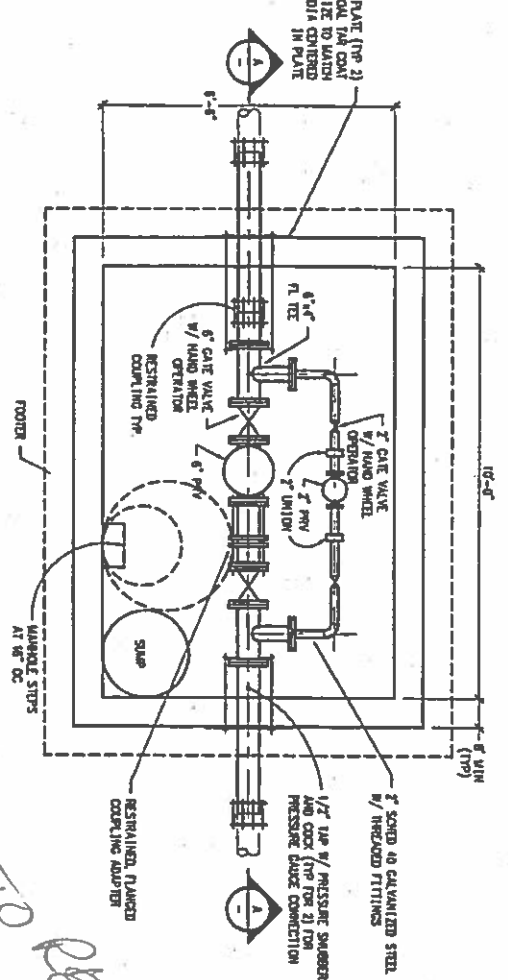
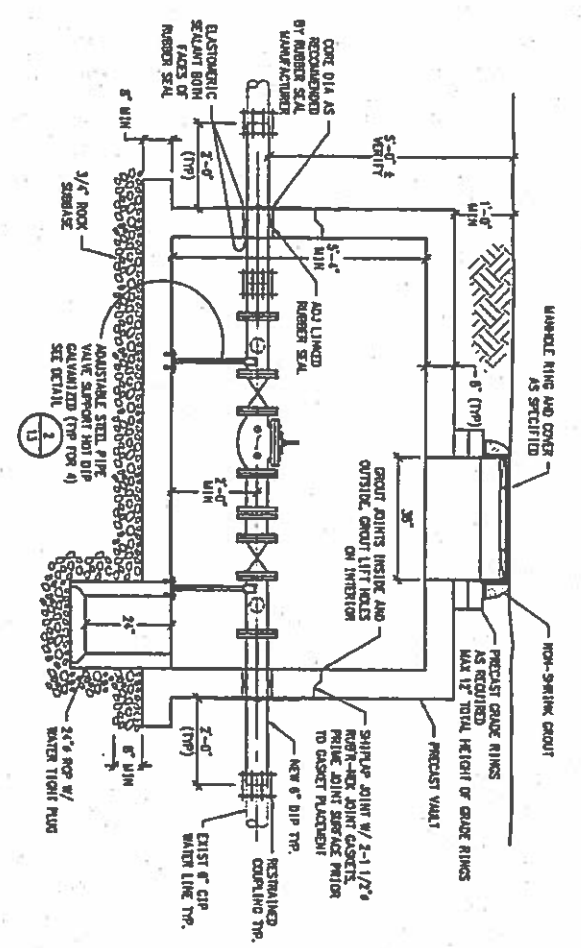


**WELL 8
YARD PIPING
IMPROVEMENTS**



PRV 2 REPLACEMENT



- NOTES
- EXIST PRV STATION NO. 2 CONSISTS OF 6'-0" TO CONC. IN APPROX 7'-0" DEEP. VERIFY LOCATION OF TIE-IN TO FIELD WITH ENGINEER. PROVIDE ROUTE PROPOSED UP LINE UNDER EXISTING WATER LINES TO MAINTAIN INTERSECTION OF FLOW IN EXISTING LINE.
 - CONTRACTOR TO VERIFY DEPTH OF EXIST' G.P. WATER LINE.

OK TO REUSE EXISTING FOLLOWING INSTALLATION SPEC

NO.	DATE	DESIGN	BY	REVISION

DESIGNED BY:	DATE:	PROJECT NO.:	SHEET NO.:
APPROVED BY:	FEBRUARY, 1993	NO-1023-00	7 OF 16

ROTHBERG, TAMBURINI & WINSOR, INC. Professional Engineers & Consultants Denver, CO	WOODMOOR WATER & SANITATION DISTRICT NO. 1 MISCELLANEOUS WATER LINES PLAN VIEW ONLY
---	--