

**Tech Contractors**  
ENGINEERING GROUP

Brad Walters  
Inspection Supervisor  
El Paso County Development Services  
2880 International Circle, Suite 110  
Colorado Springs CO, 80910

RE: Substantial Compliance  
Detention Pond G  
Rolling Hills Ranch Early Grading Permit  
Grading Plans Approved June 2, 2020

October 5, 2022

Dear Mr. Walters,

Tech Contractors has visually inspected and completed an as-built topographic survey of the detention pond located within Rolling Hills Ranch Filing 2 at Meridian Ranch and based upon our observations and the data collected, the detention pond has been substantially completed per all approved plans and specifications. The analysis of the as-built pond data indicates the peak storage volume after construction is estimated to be 24.9 ac-ft with a storage elevation of 7030.2 leaving 1.3 feet of freeboard to the spillway. Please see the below chart for more detailed information.

	POND TOTAL VOLUME	100-YEAR			10-YEAR		
		VOLUME	ELEVATION	DISCHARGE	VOLUME	ELEVATION	DISCHARGE
DESIGN	33.4 ac-ft	25.3 ac-ft	7030.3	472 CFS	10.8 ac-ft	7027.9	27 CFS
AS-BUILT	37.2 ac-ft	24.9 ac-ft	7030.2	452 CFS	11.5 ac-ft	7028.0	27 CFS

Should you have any questions or concerns please feel free to contact me at 719-495-7444 or by email at [tom@meridianranch.com](mailto:tom@meridianranch.com)

Sincerely



Thomas A. Kerby, PE  
Tech Contractors  
11886 Stapleton Drive  
Falcon, Colorado 80831



cc  
Raul Guzman (GTL Development)  
Bret Haycock (Tech Contractors)

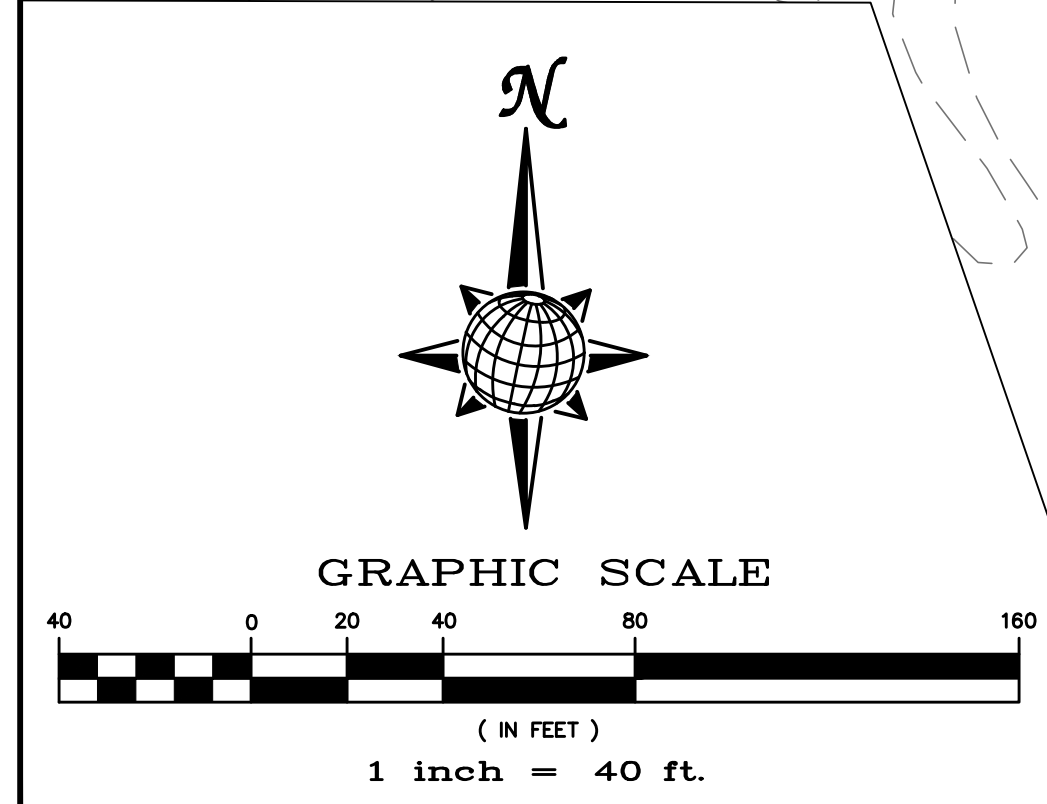
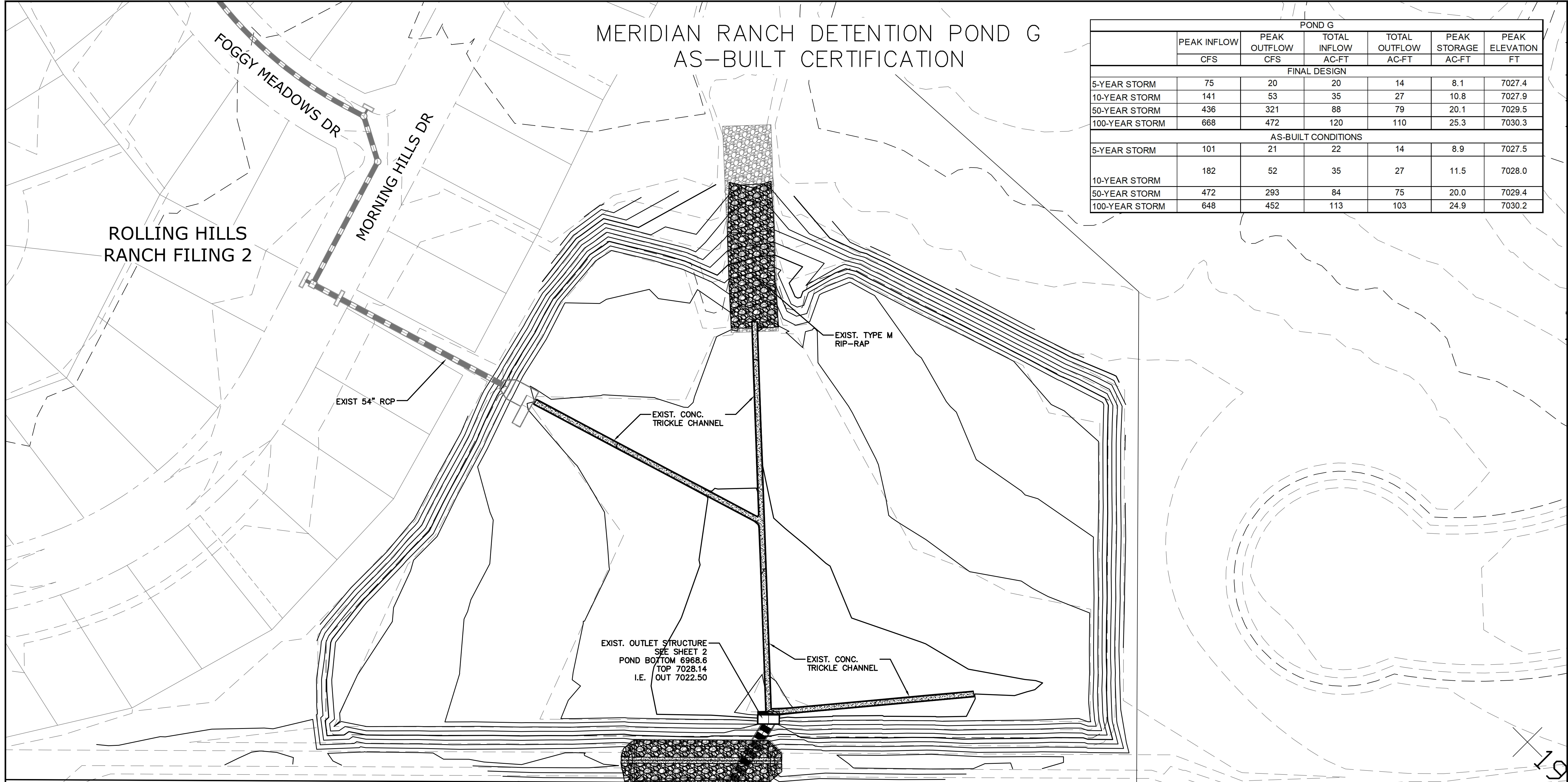
Telephone No.: 719.495.7444

11910 Tourmaline Dr., #130  
Falcon CO. 80831

Billing Address  
P. O. Box 80036  
San Diego, CA 92138

# MERIDIAN RANCH DETENTION POND G AS-BUILT CERTIFICATION

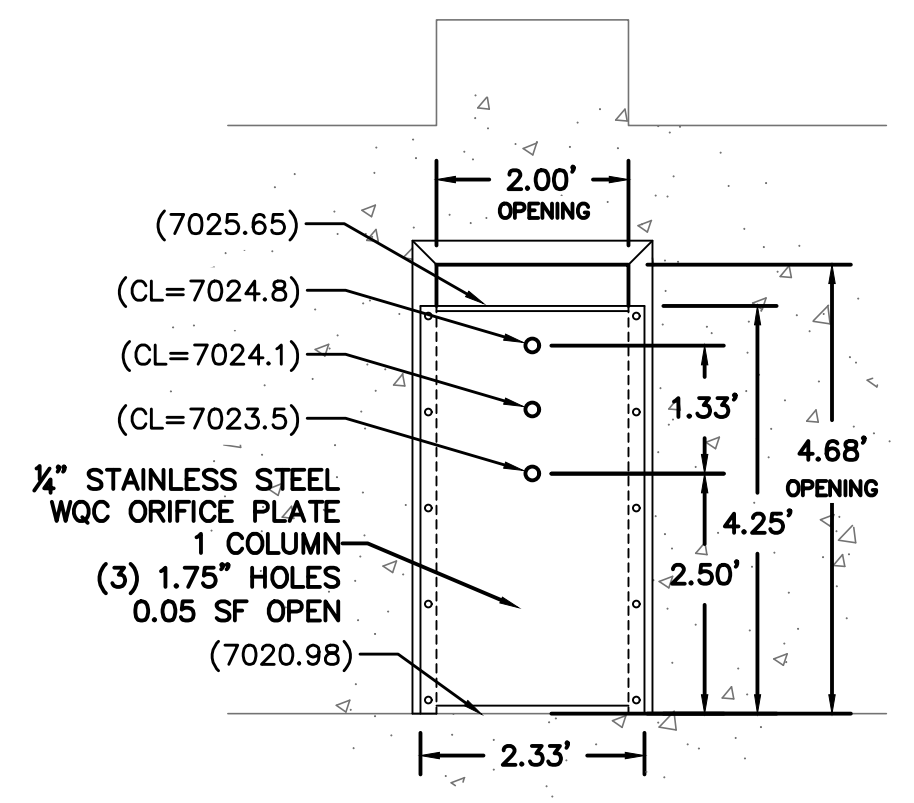
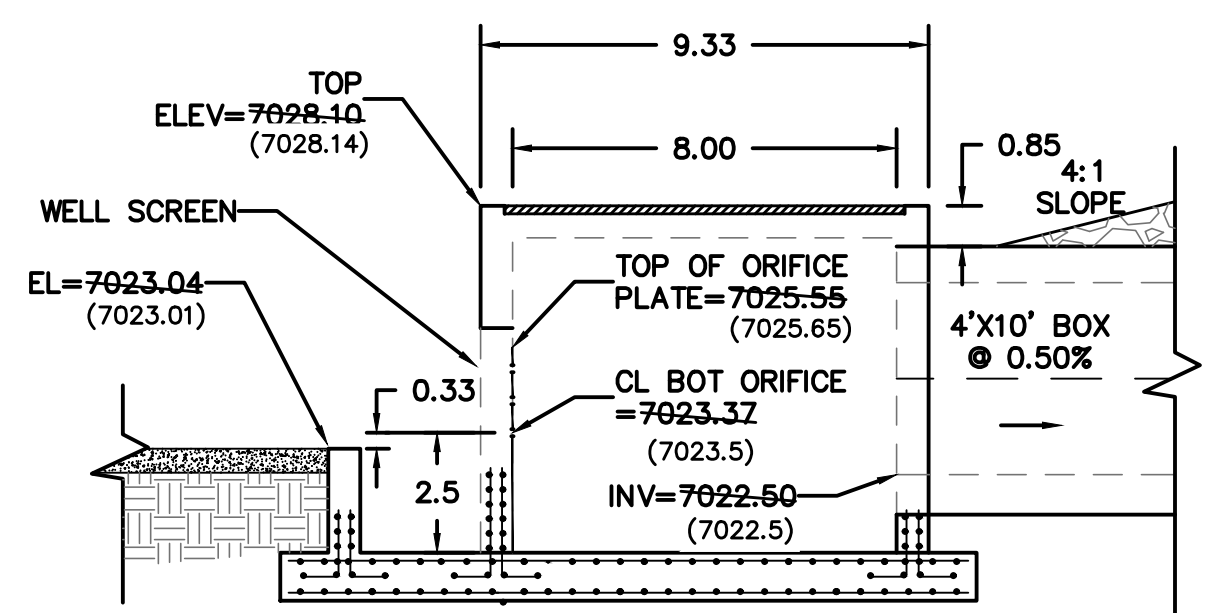
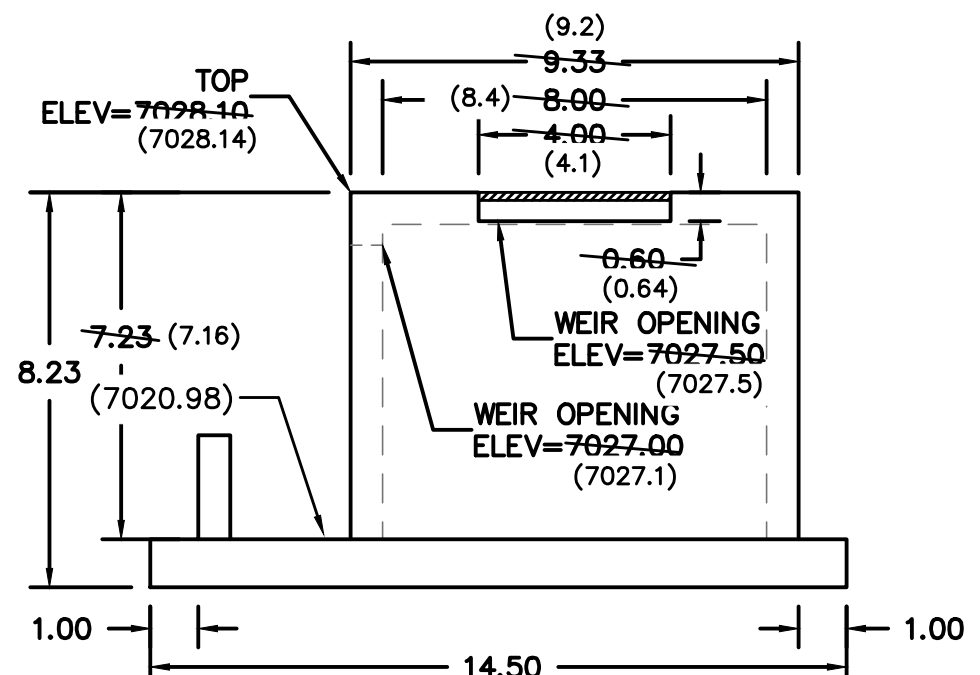
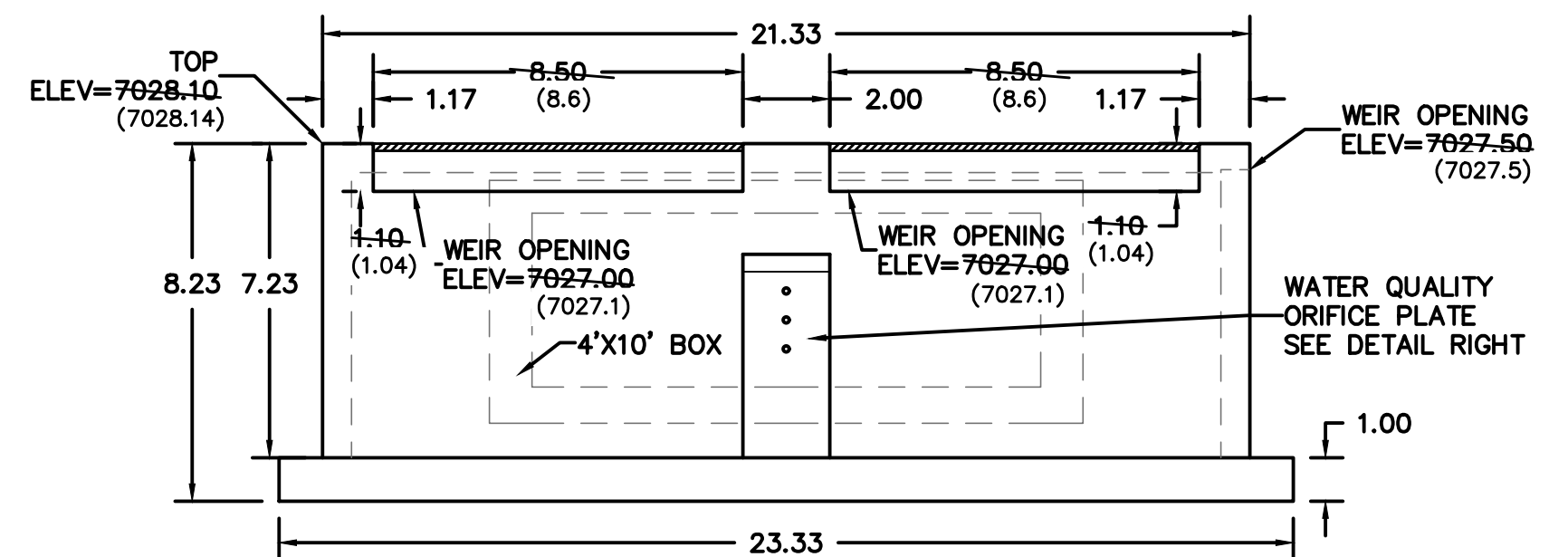
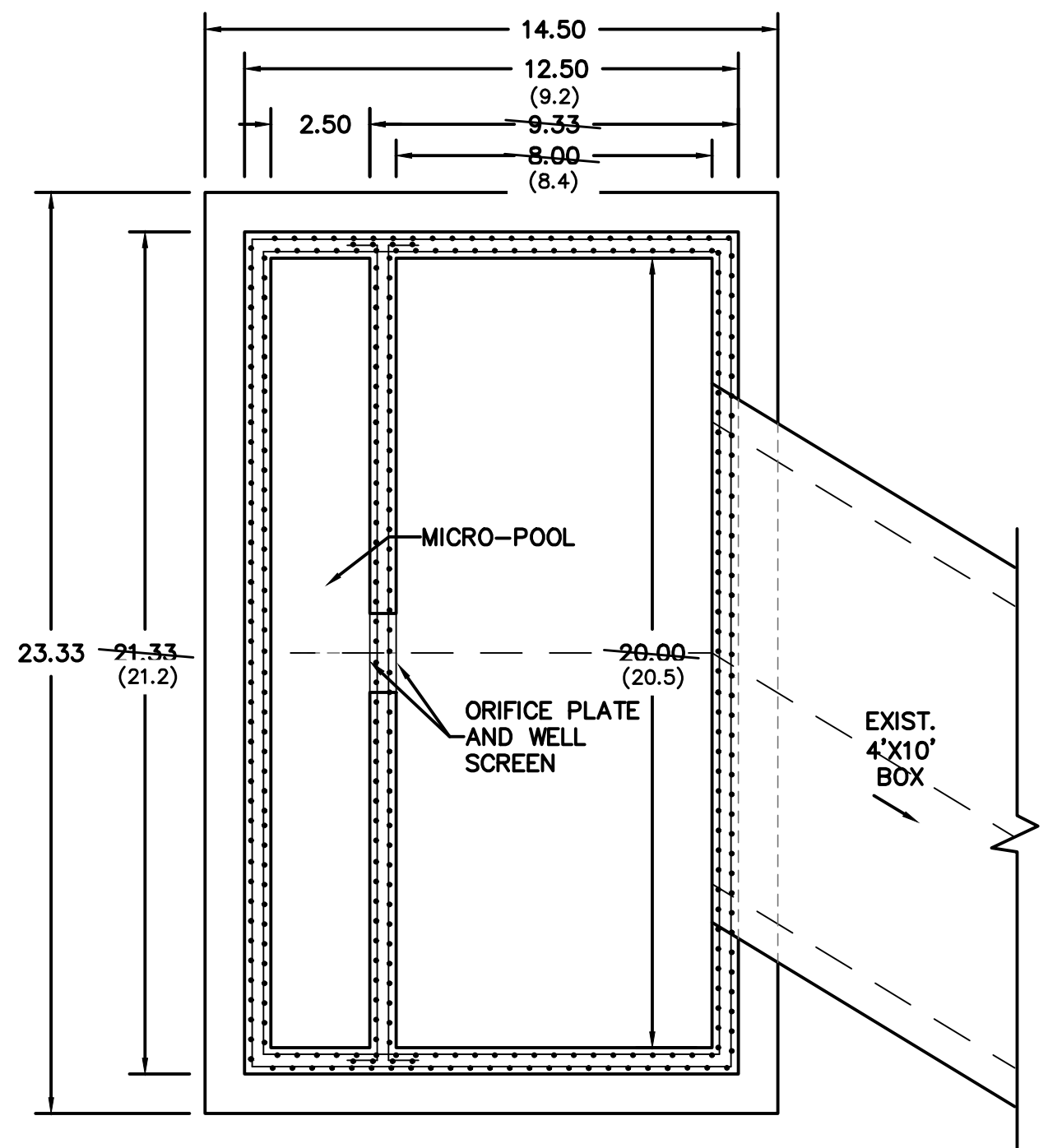
POND G						
	PEAK INFLOW	PEAK OUTFLOW	TOTAL INFLOW	TOTAL OUTFLOW	PEAK STORAGE	PEAK ELEVATION
	CFS	CFS	AC-FT	AC-FT	AC-FT	FT
FINAL DESIGN						
5-YEAR STORM	75	20	20	14	8.1	7027.4
10-YEAR STORM	141	53	35	27	10.8	7027.9
50-YEAR STORM	436	321	88	79	20.1	7029.5
100-YEAR STORM	668	472	120	110	25.3	7030.3
AS-BUILT CONDITIONS						
5-YEAR STORM	101	21	22	14	8.9	7027.5
10-YEAR STORM	182	52	35	27	11.5	7028.0
50-YEAR STORM	472	293	84	75	20.0	7029.4
100-YEAR STORM	648	452	113	103	24.9	7030.2



KEY DESIGN POINT COMPARISONS				
	100-YR	50-YR	10-YR	5-YR
Park Boundary (G5)				
AS-BUILT	452	293	52	21
HISTORIC	536	350	84	30
PERCENT of HISTORIC	84.3%	83.7%	62.0%	68.2%
Eastonville Rd (G6)				
AS-BUILT	493	317	57	22
HISTORIC	551	369	88	32
PERCENT of HISTORIC	89.5%	85.9%	64.8%	70.0%

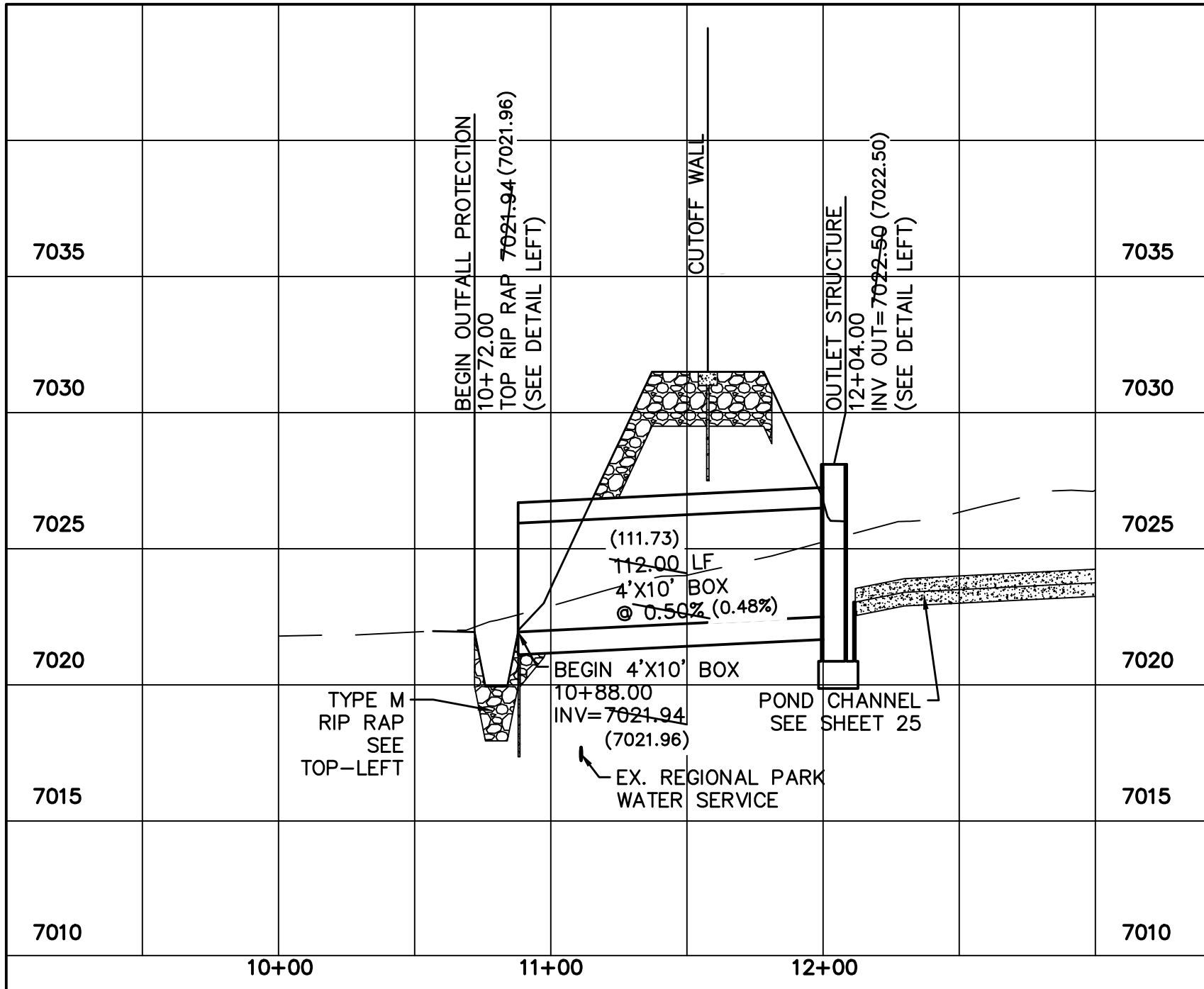
Scale	AS SHOWN	1 of 2							
	Drawn by TAK	Checked by RG	Date MAR 2021						
<b>MERIDIAN RANCH</b>									
DETENTION POND PLAN HAEGLER RANCH REGIONAL DETENTION POND AS-BUILT									
TECH CONTRACTORS 11886 STAPLETON DRIVE FALCON, CO 80831 TELEPHONE: 719.495.7444 FAX: 719.495.3349									
Revisions No.      Date      Invt.      Date      Invt.									

S:\OneDrive\Civil\Rolling Hills Filing 11\DWG\Plan Sheets\Drainage Maps\DETENTION POND CERT\POND G AS-BUILT.dwg, 3/9/2022 8:02:35 AM



TECH CONTRACTORS  
11886 STAPLETON DRIVE  
FALCON, CO 80831  
TELEPHONE: 719.495.7444  
FAX: 719.495.3349

No.	Revisions	Date	Instr.	Appr.	Date
-	-	-	-	-	-



Scale	AS SHOWN	Drawn by	TAK	Checked by	RG	Date
2	of	2				MAR 2021

DETECTION POND DETAILS  
HAEGLER RANCH REGIONAL  
DETECTION POND AS-BUILT