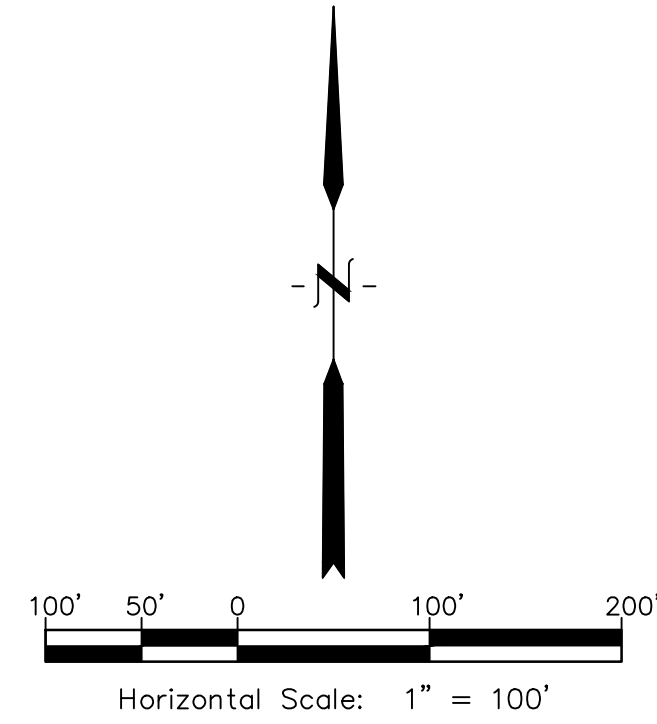


FINAL PLAT THE TRAILS FILING No. 10

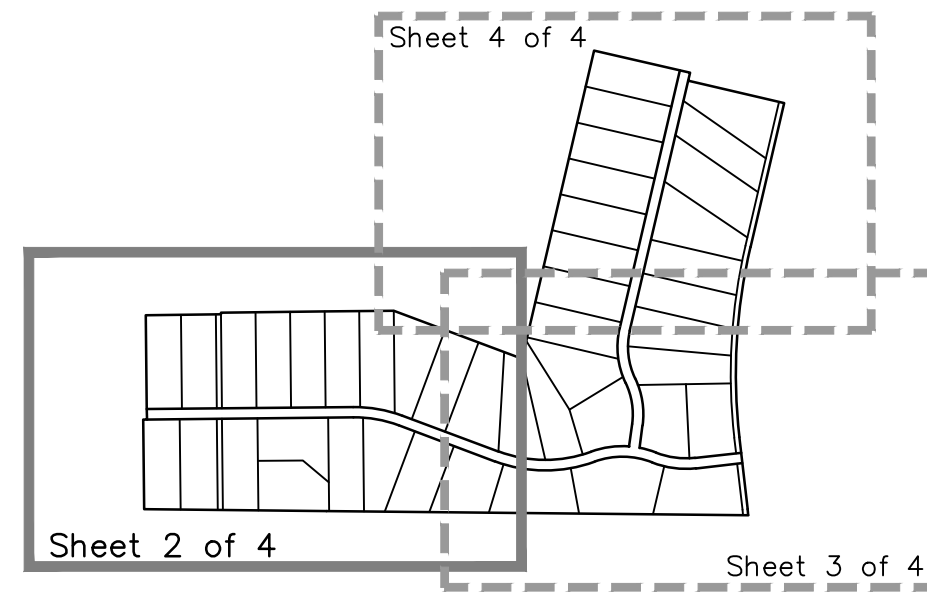
A SUBDIVISION OF PORTIONS OF THE SOUTHWEST QUARTER OF SECTION 16 AND THE SOUTHEAST QUARTER OF SECTION 17,
TOWNSHIP 12 SOUTH, RANGE 64 WEST OF THE THE SIXTH PRINCIPAL MERIDIAN, COUNTY OF EL PASO, STATE OF COLORADO.

Sheet 2 of 4



Legend

- Set 5/8" x 18" rebar with 1 1/2" aluminum cap stamped "DB&CO PLS 23515"
- found rebar with 1 1/2" plastic cap, marked "LS 38252"
- △ found rebar with 1" plastic cap, marked "RMLS 19625"
- found rebar with 1 1/2" aluminum cap marked "PLS 27605"
- R.O.W. Right of Way
- s.f. +/- square feet - more or less
- No. number



Sheet Index

Southwest Corner, Section 17,
T12S, R64W, Sixth P.M.
(Found a 3 1/4" aluminum cap, stamped PLS 25955)

4212.82' (BASIS OF BEARINGS)
South line, Section 17
N 89°25'57" W 5267.76'

SE 1/4
SECTION 17

SW 1/4
SECTION 16

THE TRAILS
FILING No. 9
Reception No. XXXXXXXXX

THE TRAILS
FILING No. 7A
Reception No. 207712671

THE TRAILS
FILING No. 8
Reception No. 207712541

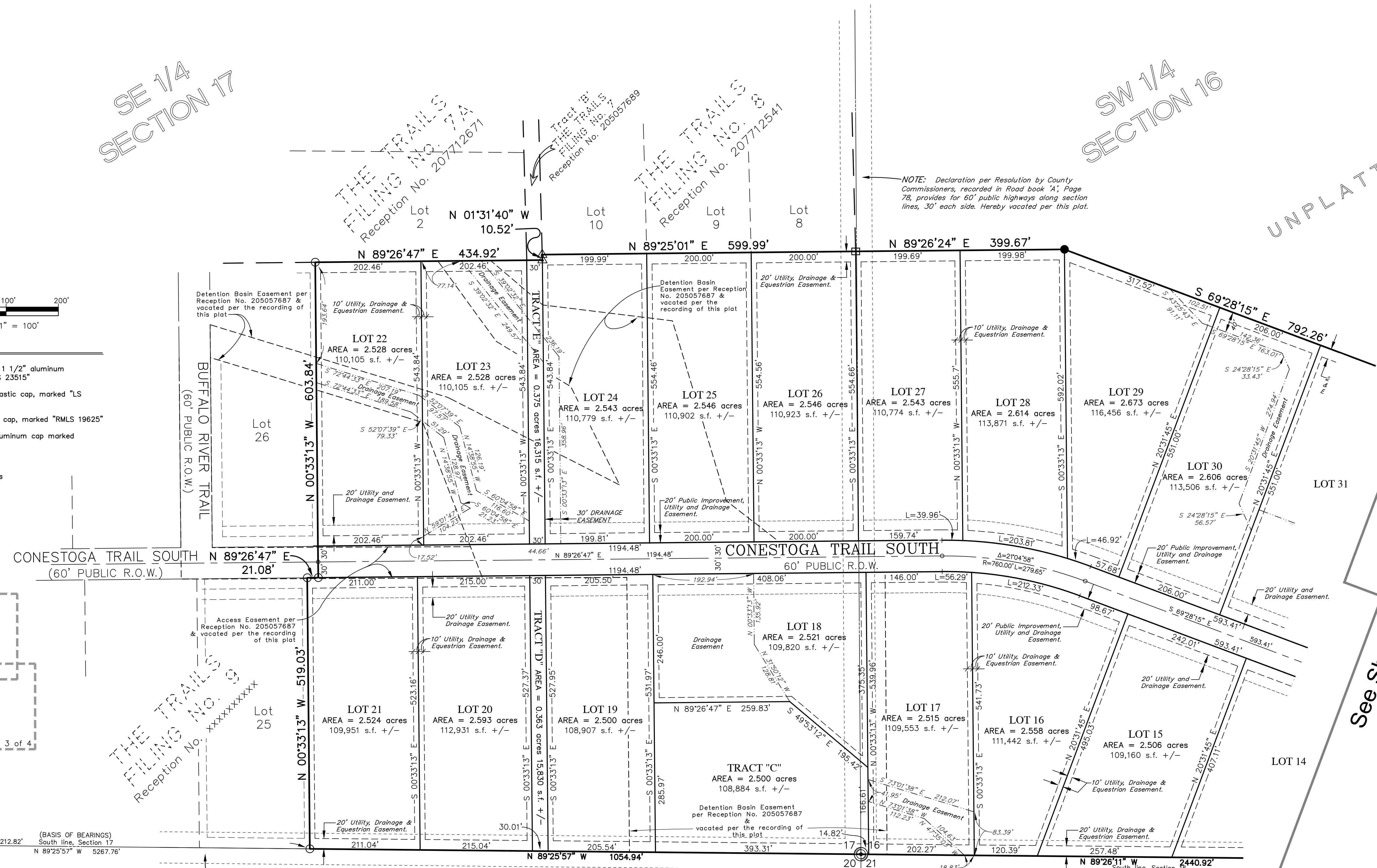
UNPLATTED

UNPLATTED

NE 1/4
SECTION 20

NW 1/4
SECTION 21

See Sheet 3



NOTE: Declaration per Resolution by County Commissioners, recorded in Road book 'A', Page 78, provides for 60' public highways along section lines, 30' each side. Hereby vacated per this plat.

NOTE: Declaration per Resolution by County Commissioners, recorded in Road book 'A', Page 78, provides for 60' public highways along section lines, 30' each side. Hereby vacated per this plat.

"POINT OF BEGINNING"
Southeast Corner, Section 17,
T12S, R64W, Sixth P.M.
(Found a 3 1/4" aluminum cap, stamped PLS 24964)

Preliminary August 29, 2024

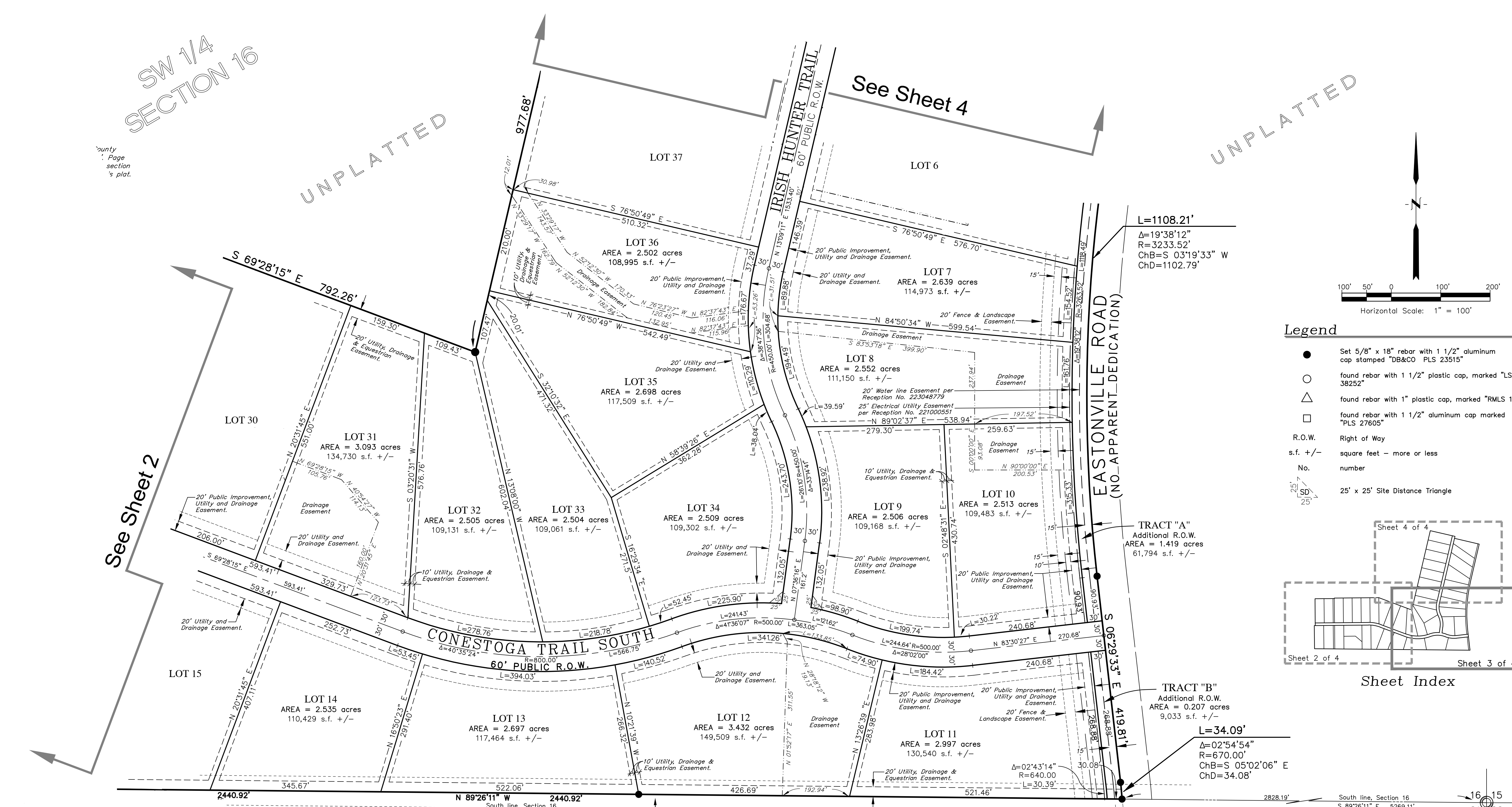
PREPARED BY: Drexel, Barrell & Co. 719-260-0087
Engineers/Surveyors
101 SAHWATCH STREET, SUITE #100
COLORADO SPRINGS, COLORADO 80903

Revisions - Date	Date	Drawn By	Job No.
Comments XX/XX/XX	08/29/2024	S.C.	21820-01
	Scale	Checked By	Drawing No.
	1"=100'	P.C.O.	

FINAL PLAT THE TRAILS FILING No. 10

A SUBDIVISION OF PORTIONS OF THE SOUTHWEST QUARTER OF SECTION 16 AND THE SOUTHEAST QUARTER OF SECTION 17,
TOWNSHIP 12 SOUTH, RANGE 64 WEST OF THE THE SIXTH PRINCIPAL MERIDIAN, COUNTY OF EL PASO, STATE OF COLORADO.

Sheet 3 of 4

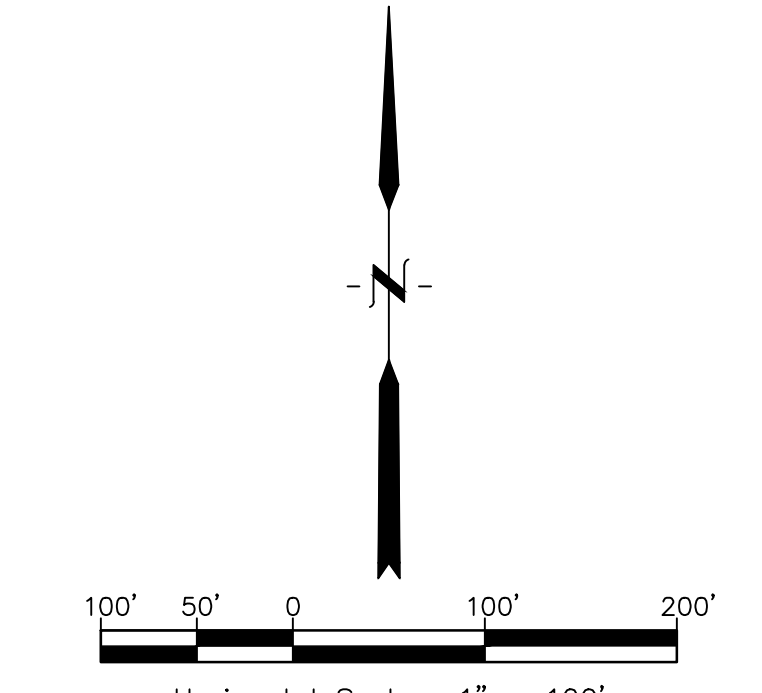


SW 1/4 SECTION 16

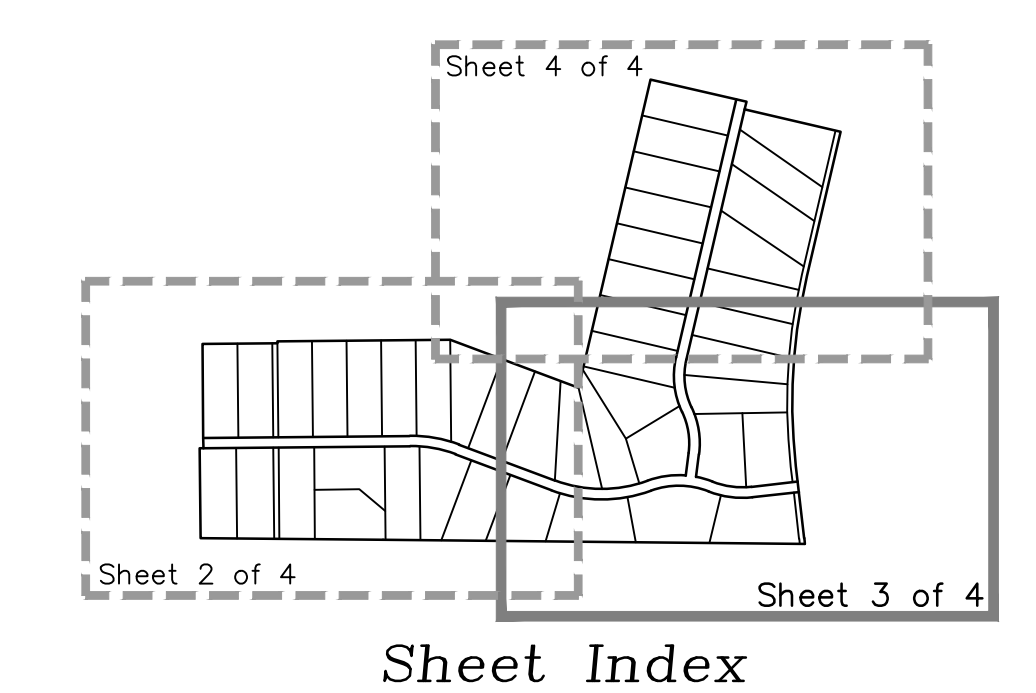
See Sheet 2

NW 1/4 SECTION 21

See Sheet 4



- Legend**
- Set 5/8" x 18" rebar with 1 1/2" aluminum cap stamped "DB&CO PLS 23515"
 - found rebar with 1 1/2" plastic cap, marked "LS 38252"
 - △ found rebar with 1" plastic cap, marked "RMLS 19625"
 - found rebar with 1 1/2" aluminum cap marked "PLS 27605"
 - R.O.W. Right of Way
 - s.f. +/- square feet - more or less
 - No. number
 - 25' x 25' Site Distance Triangle



NOTE: Declaration per Resolution by County Commissioners, recorded in Road book "A", Page 78, provides for 60' public highways along section lines, 30' each side. (No apparent dedication or conveyance by actual property owner)

South line, Section 16
S 89°26'11" E 5269.11'

Southeast Corner, Section 16,
T12S, R64W, Sixth P.M.
(found a 3 1/4" aluminum cap, stamped PLS 30087)

Preliminary August 29, 2024

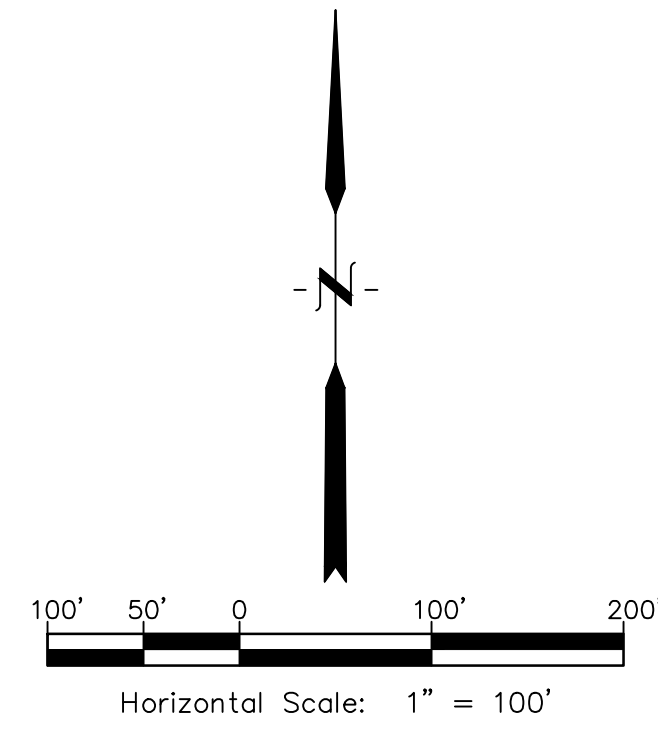
PREPARED BY: Drexel, Barrell & Co. 719-260-0087
Engineers/Surveyors
101 SAHWATCH STREET, SUITE #100
COLORADO SPRINGS, COLORADO 80903

Revisions - Date	Date	Drawn By	Job No.
Comments XX/XX/XX	08/29/2024	S.C.	21820-01
	Scale	Checked By	Drawing No.
	1"=100'	P.C.O.	

FINAL PLAT THE TRAILS FILING No. 10

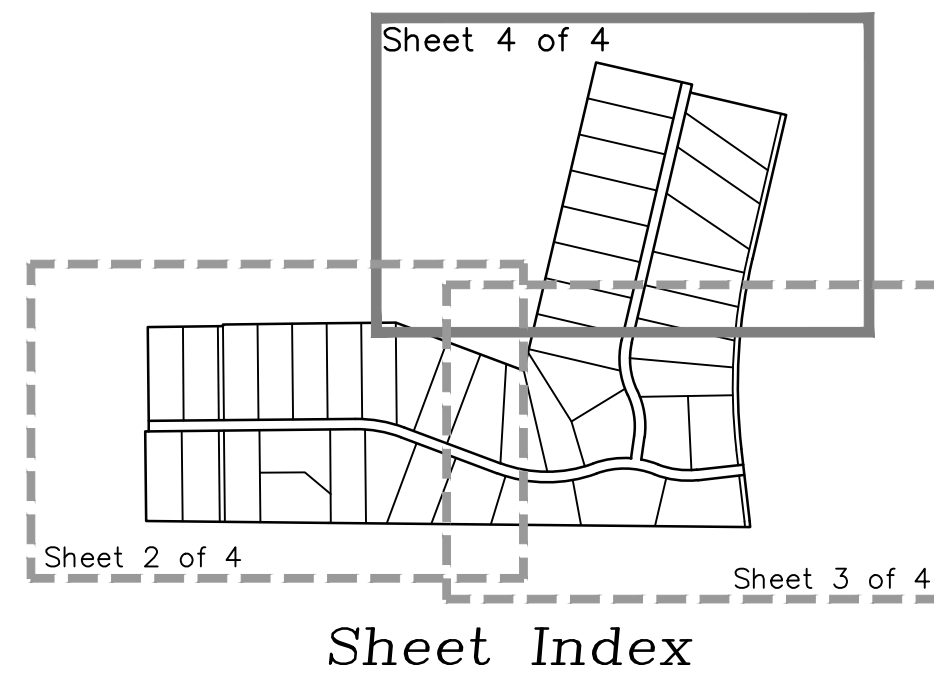
A SUBDIVISION OF PORTIONS OF THE SOUTHWEST QUARTER OF SECTION 16 AND THE SOUTHEAST QUARTER OF SECTION 17,
TOWNSHIP 12 SOUTH, RANGE 64 WEST OF THE THE SIXTH PRINCIPAL MERIDIAN, COUNTY OF EL PASO, STATE OF COLORADO.

Sheet 4 of 4



Legend

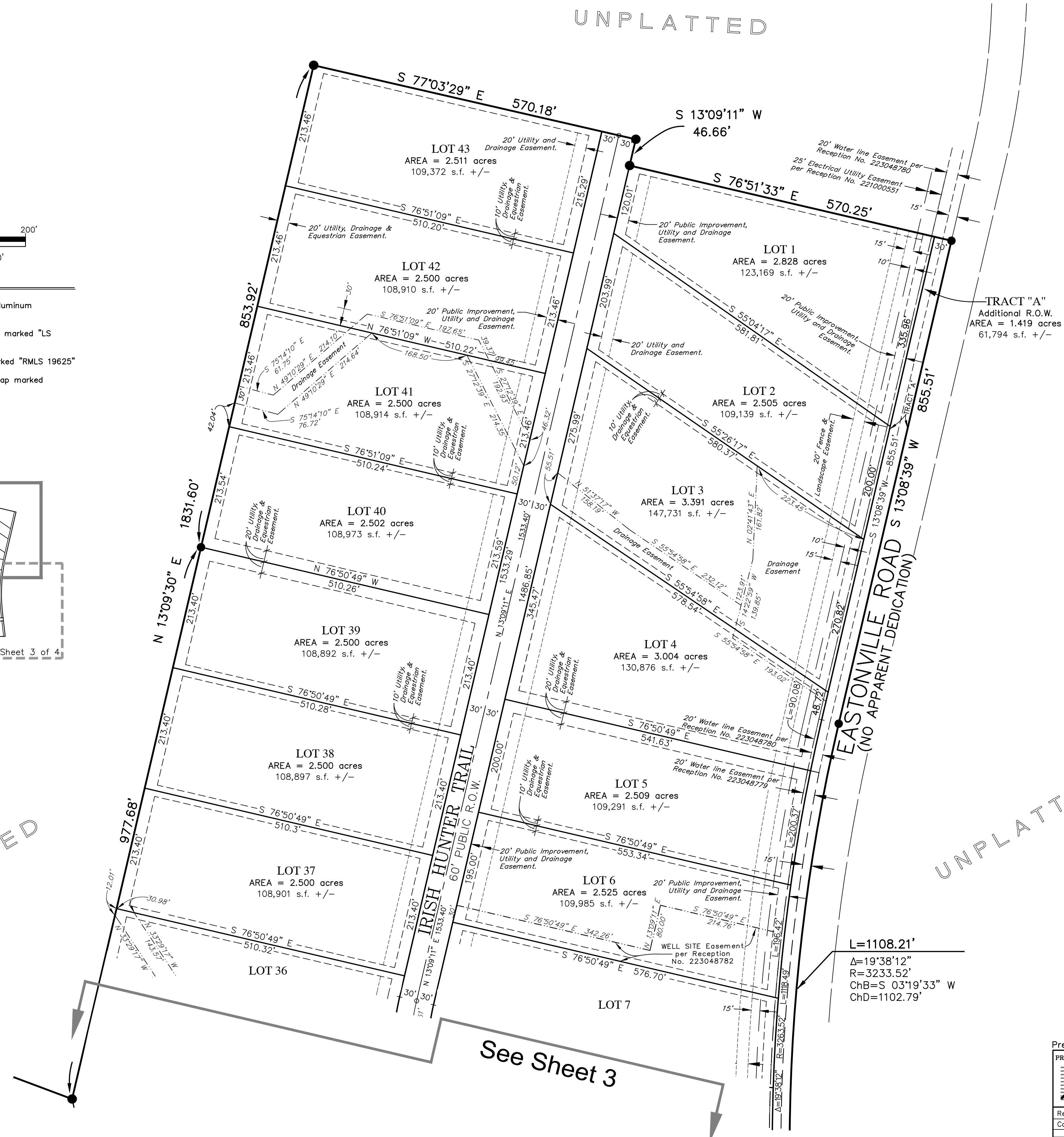
- Set 5/8" x 18" rebar with 1 1/2" aluminum cap stamped "DB&CO PLS 23515"
- found rebar with 1 1/2" plastic cap, marked "LS 38252"
- △ found rebar with 1" plastic cap, marked "RMLS 19625"
- found rebar with 1 1/2" aluminum cap marked "PLS 27605"
- R.O.W. Right of Way
- s.f. +/- square feet - more or less
- No. number



SW 1/4
SECTION 16

UNPLATTED

UNPLATTED



Preliminary August 29, 2024

PREPARED BY: Drexel, Barrell & Co. 719-260-0087			
Engineers/Surveyors			
101 SAHWATCH STREET, SUITE #100 COLORADO SPRINGS, COLORADO 80903			
Revisions - Date	Date	Drawn By	Job No.
Comments XX/XX/XX	08/___/2024	S.C.	21820-01
	Scale	Checked By	Drawing No.
	1"=100'	P.C.O.	